



Welcome & Introduction

Albrecht von Bargaen (Chair)

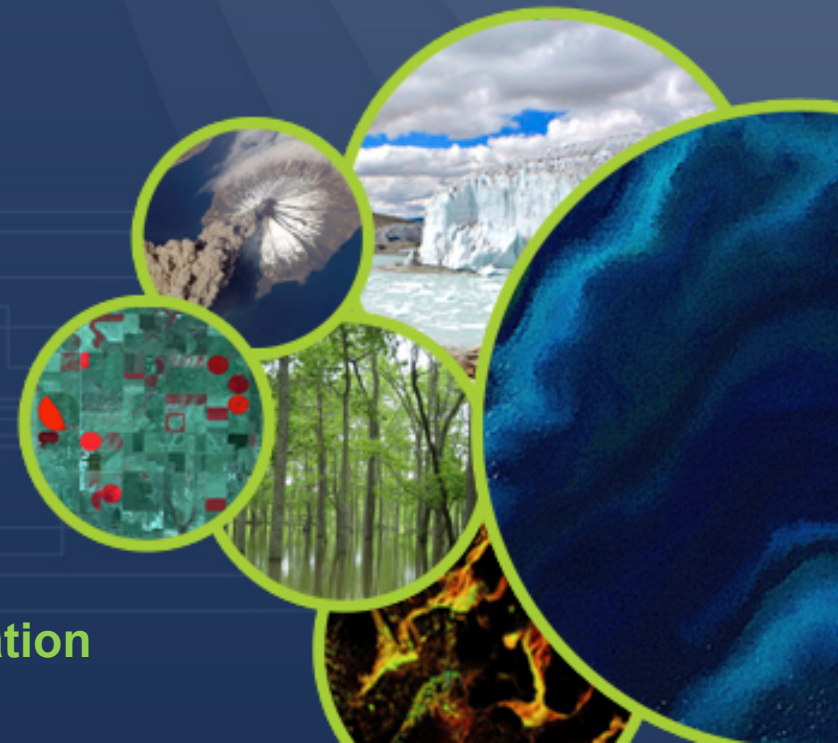
DLR

Agenda Item 1

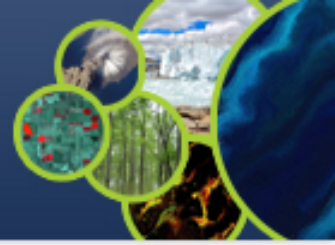
WGCV Planning Meeting

Radebeul

February 24 - 25, 2015

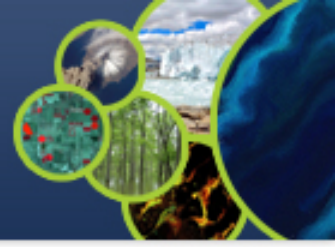


Working Group on Calibration and Validation



Welcome to CEOS-WGCV planning meeting

- Recall to action item # of WGCV plenary 38
- Many thanks to ESA and Bojan Bojkov for local organization
 - Bojan will provide some organizational items in some minutes
- Many thanks for your attendance and for sharing your experience with us
- Round table after welcome



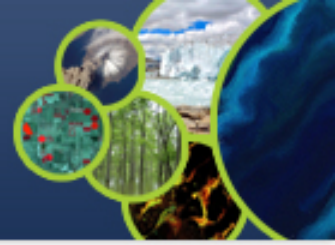
Specific Meeting Mission

To identify a road map considering boundary conditions for finding a most suitable recommendation how to make usage of

- Digital Elevation Models (DEMs)
- Cloud masking
- Atmospheric correction

in Earth Observation applications.

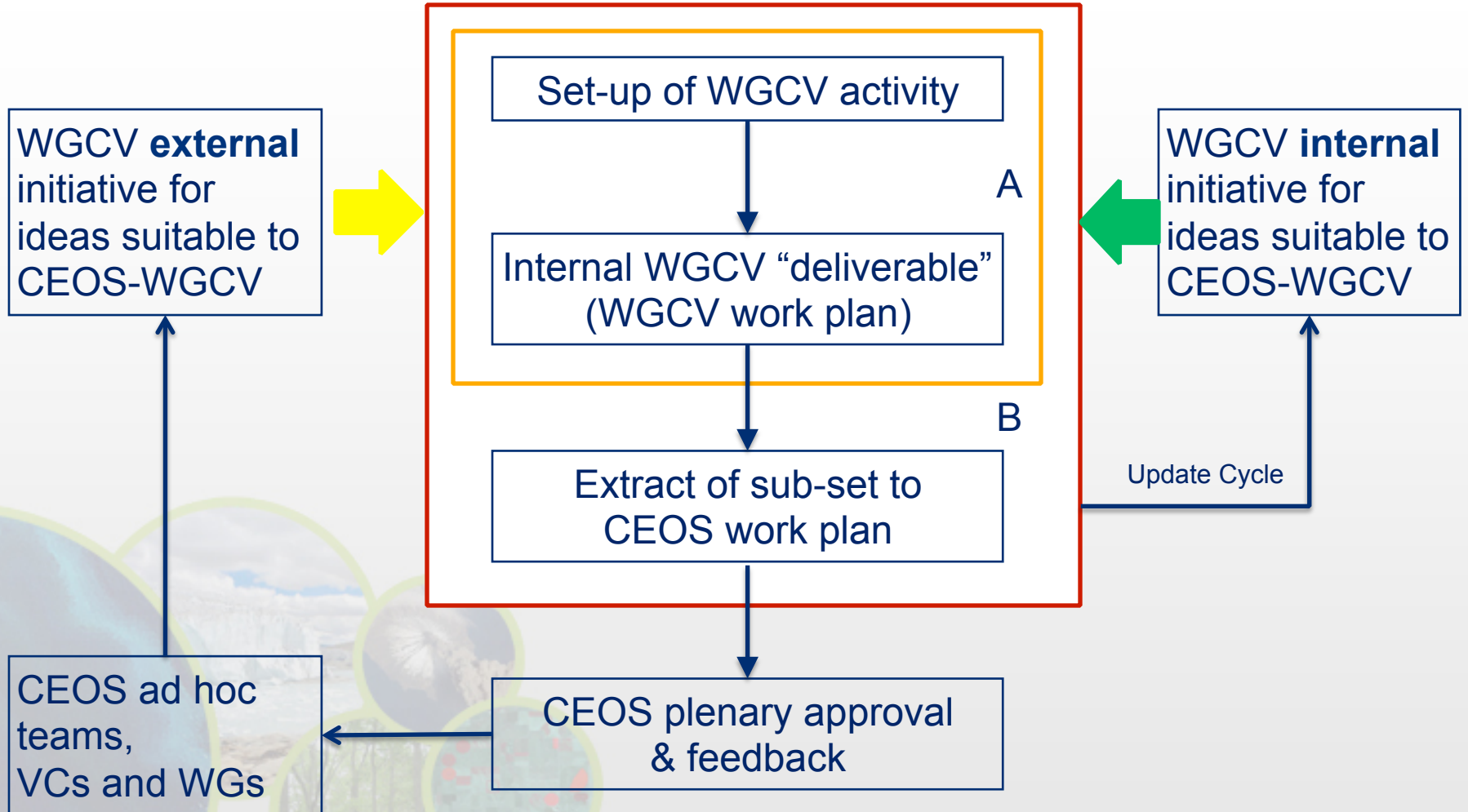
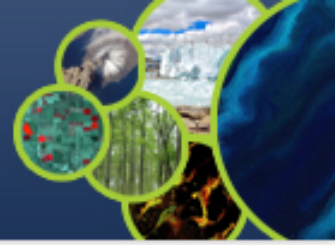
Most likely target: Recommendations shall be „inclusive“.

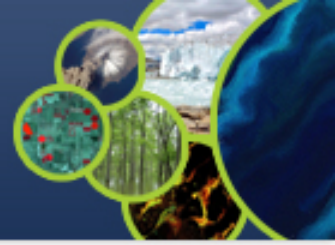


Great Picture

We are acting within CEOS which means we have to recapitulate

- Work plan for CEOS since 2014 with rolling update at the beginning of each year
- Work plan of CEOS WGCV
- Cooperation within WGCV between sub-groups or cross-cutting
- Cooperation with CEOS Working Groups and Virtual Constellations
- Cooperation with other institutional organizations, e.g. GEO -> GEOSS context
(GEO Community of Practice)
- Best Effort





General Meeting Mission

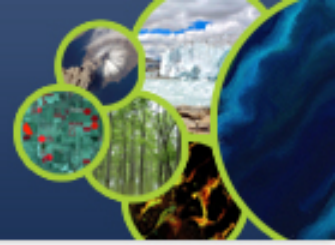
Box A

Identification of a generalized mechanism for the set-up of (concrete project-like) activities to be included in an internal work plan with a minimum formalism.

See also: Presentation by Jörg Schulz (EUMETSAT) about SCOPE-CM etc.....

Box B

Identification of a generalized mechanism to feed CEOS-WGCV deliverables into the yearly update of the CEOS work plan synchronized to our plenary meeting rhythm.



Some home work for sub-group leads

Please think about

1. Reorganization of WGCV work plan into “Terms of References” and (internal) Work Plan.
2. ToR includes all, WGCV and sub-groups
3. Work plan is organized a small excel listing / database including deliverables
4. Rolling update keeps WGCV informed
5. WGCV work plan as base input for CEOS work plan (extract!)
6. How to feed into WGCV work plan initiatives from other (CEOS, GEO) entities