

1. Overview

Report Production Date:	09-Nov-2018
Processor Used:	CryoSat Ice Processor
Data Used:	L1B and L2 OFFLINE Data

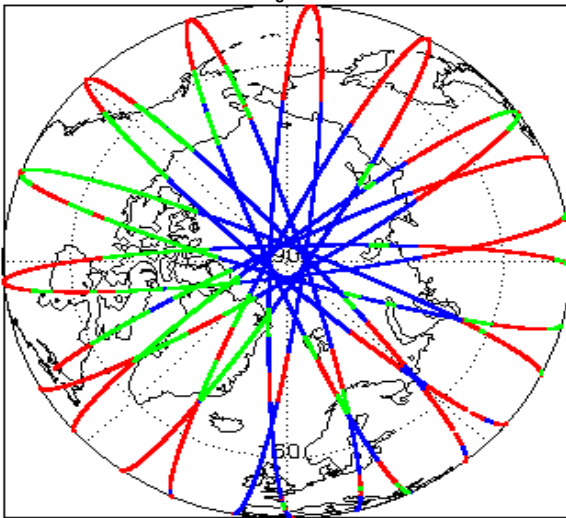
Check	Status
Server check: science-pds.cryosat.esa.int	Nominal
Server check: calval-pds.cryosat.esa.int	Nominal
Product Software Check	Nominal
Product Format Check	Nominal
Product Header Analysis	Nominal
Star Tracker Usage Check	Nominal
L1B Calibration Usage Check	Nominal
L1B & L2 Auxiliary Data File Usage Check	Nominal
L1B & L2 Auxiliary Correction Error Check	Nominal
L1B & L2 Measurement Confidence Data Check	See Section 4.7 and 5.5

Mission / Instrument News

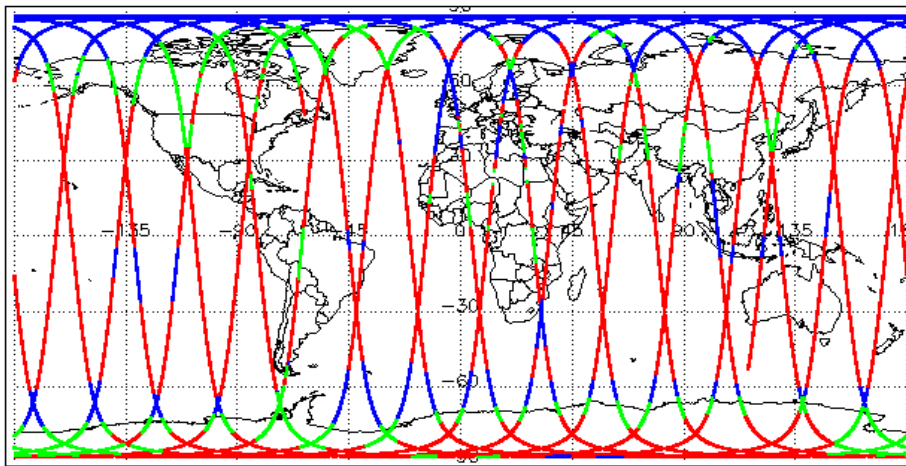
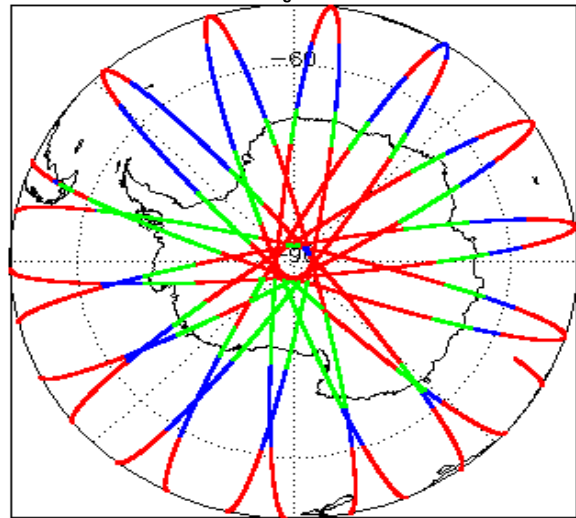
10-Oct-2018	None
11-Oct-2018	None
12-Oct-2018	Nothing planned

2. Global Coverage

Global Coverage - North Pole



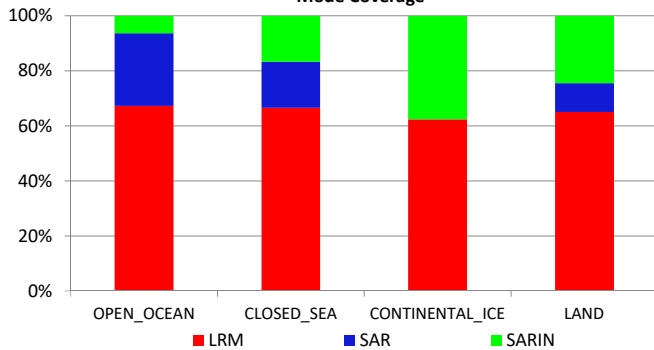
Global Coverage - South Pole



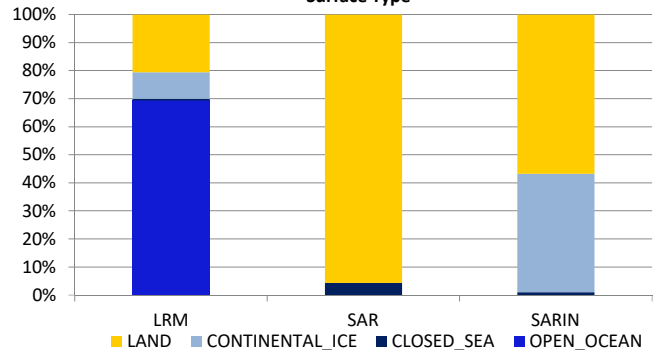
Mode Coverage (%)

	LRM	20.4
	SAR	13.3
	SARIn	0.0

Mode Coverage



Surface Type



3. Instrument Configuration

The SIRAL instrument configuration for the day of acquisition is provided below.

SIRAL instrument(s) in use:	SIRAL - A
-----------------------------	-----------

4. Level 1B Data Quality Check

4.1 L1B Product Format Check

Each product, retrieved and unpacked from the science server, is checked to ensure it consists of both an XML header file (.HDR) and a product file (.DBL).

Number of products with errors: 0

4.2 L1B Product Header Analysis

For all products, a series of pre-defined checks are carried out on the MPH and SPH in order to identify any inconsistencies and/or errors raised by the ground-segment processing chain.

Number of products with errors: 0

4.3 Star Tracker Usage Check

Each product is checked in order to ensure a valid star tracker file has been used in processing.

Number of products with errors: 0

4.4 L1B Calibration Usage Check

Each product is checked in order to ensure that the necessary calibration files have been used in processing.

Number of products with errors: 0

4.5 L1B Auxiliary Data File Usage Check

Each product is checked for missing Data Set Descriptors with respect to a pre-determined baseline and also to check the validity of Auxiliary Data Files is correct.

Number of products with errors: 0

4.6 L1B Auxiliary Correction Error Check

CryoSat L1B data includes a correction error flag (field 54) for each measurement record. The bit value of this flag indicates any problems when set.

Number of products with errors: 0

4.7 L1B Measurement Confidence Data Check

CryoSat L1B data includes a measurement confidence flag (field 18) for each measurement record. The bit value of this flag indicates any problems when set.

Currently, there are several common error flags raised in the Level 1B products which are expected due to operational mode or surface type. All common flags are summarised in the list below, followed by a table of any additional issues arising from this test.

Block Degraded Flag: This flag is currently set for a number of individual records generally at the start or end of products (all modes), but this is to be expected.

Phase Perturbation Flag: This flag is currently set for all L1B SARIn products, indicating that the ADC correction application is deactivated, but this is in line with the current configuration.

Number of products with errors: 0

5. Level 2 Data Quality Check

5.1 L2 Product Format Check

Each product, retrieved and unpacked from the science server, is checked to ensure it consists of both an XML header file (.HDR) and a product file (.DBL).

Number of products with errors: 0

5.2 L2 Product Header Analysis

For all products, a series of pre-defined checks are carried out on the MPH and SPH in order to identify any inconsistencies and/or errors raised by the ground-segment processing chain.

Number of products with errors: 0

5.3 L2 Auxiliary Data File Usage Check

Each product is checked for missing Data Set Descriptors with respect to a pre-determined baseline and also to check the validity of Auxiliary Data Files is correct.

Number of products with errors: 0

5.4 L2 Auxiliary Correction Error Check

CryoSat L2 data includes a correction error flag (field 30) for each measurement record. The bit value of this flag indicates any problems when set.

Number of products with errors: 0

5.5 L2 Measurement Quality Flag Check

CryoSat L2 data includes a quality flag (field 50) for each 20-Hz measurement record. The bit value of this flag indicates any problems when set.

Currently, there are several common error flags raised in the Level 2 products which are expected due to operational mode or surface type. All common flags are summarised in the list below, followed by a table of any additional issues arising from this test.

Freeboard error: This flag is correctly set in all L2 SAR products that are not discriminated as sea-ice, and for which freeboard cannot be calculated.

Height and Backscatter errors: These flags are currently set for products over land, but this is to be expected. Retracker 1 Height and Backscatter error flags are also set for products over sea-ice, but this is to be expected.

Peakiness error: This flag is currently set for products over sea-ice, but this is to be expected.

SARIn X-Track Angle Error: This flag is set when the difference between the computed surface elevation and the DEM is >50 m. The DEM is only available over Greenland and Antarctica and as a result this flag is set for L2 SARIn products in all other locations as expected.

SSHA interpolation error: This flag is currently set for a number of SAR products occurring at surface type boundaries, but this is to be expected.

Number of products with errors: 100

Product	Test Failed	Description
CS_OFFL_SIR_LRM_2_20181010T234657_20181011T000244_C001	Height Error (Retracker 2), Height Error (Retracker 3), Backscatter Error (Retracker 2)	There is a height and backscatter error for Retracker 2 and a height error for Retracker 3 for one or more records
CS_OFFL_SIR_LRM_2_20181011T001552_20181011T003643_C001	Height Error (Retracker 2), Backscatter Error (Retracker 2)	There is a height and backscatter error for Retracker 2 for one or more records

CS_OFFL_SIR_SIN_2_20181011T105616_20181011T105740_C001	SARIn X-track Angle Error	An ambiguous angle was detected for SARIn mode for one or more records
CS_OFFL_SIR_SIN_2_20181011T110119_20181011T110255_C001	SARIn X-track Angle Error	An ambiguous angle was detected for SARIn mode for one or more records
CS_OFFL_SIR_SIN_2_20181011T114701_20181011T114813_C001	SARIn X-track Angle Error	An ambiguous angle was detected for SARIn mode for one or more records
CS_OFFL_SIR_SIN_2_20181011T114946_20181011T115210_C001	SARIn X-track Angle Error	An ambiguous angle was detected for SARIn mode for one or more records
CS_OFFL_SIR_SIN_2_20181011T122845_20181011T123236_C001	SARIn X-track Angle Error	An ambiguous angle was detected for SARIn mode for one or more records
CS_OFFL_SIR_SIN_2_20181011T124020_20181011T124205_C001	SARIn X-track Angle Error	An ambiguous angle was detected for SARIn mode for one or more records
CS_OFFL_SIR_SIN_2_20181011T132622_20181011T132845_C001	SARIn X-track Angle Error, Surface Model Unavailable	An ambiguous angle was detected for SARIn mode and no DEM or Slope Model was used for one or more records
CS_OFFL_SIR_SIN_2_20181011T132903_20181011T133046_C001	Height error (Retracker 1)	There is a height error for Retracker 1 for one or more records
CS_OFFL_SIR_SIN_2_20181011T140900_20181011T141051_C001	SARIn X-track Angle Error	An ambiguous angle was detected for SARIn mode for one or more records
CS_OFFL_SIR_SIN_2_20181011T141308_20181011T141312_C001	SARIn X-track Angle Error	An ambiguous angle was detected for SARIn mode for one or more records
CS_OFFL_SIR_SIN_2_20181011T141915_20181011T142124_C001	SARIn X-track Angle Error	An ambiguous angle was detected for SARIn mode for one or more records
CS_OFFL_SIR_SIN_2_20181011T150001_20181011T150018_C001	SARIn X-track Angle Error, Surface Model Unavailable	An ambiguous angle was detected for SARIn mode and no DEM or Slope Model was used for one or more records
CS_OFFL_SIR_SIN_2_20181011T150118_20181011T150147_C001	SARIn X-track Angle Error, Surface Model Unavailable	An ambiguous angle was detected for SARIn mode and no DEM or Slope Model was used for one or more records
CS_OFFL_SIR_SIN_2_20181011T154837_20181011T155015_C001	SARIn X-track Angle Error	An ambiguous angle was detected for SARIn mode for one or more records
CS_OFFL_SIR_SIN_2_20181011T155135_20181011T155302_C001	SARIn X-track Angle Error	An ambiguous angle was detected for SARIn mode for one or more records
CS_OFFL_SIR_SIN_2_20181011T155719_20181011T160013_C001	SARIn X-track Angle Error	An ambiguous angle was detected for SARIn mode for one or more records
CS_OFFL_SIR_SIN_2_20181011T172832_20181011T173213_C001	SARIn X-track Angle Error	An ambiguous angle was detected for SARIn mode for one or more records
CS_OFFL_SIR_SIN_2_20181011T173755_20181011T173909_C001	SARIn X-track Angle Error	An ambiguous angle was detected for SARIn mode for one or more records
CS_OFFL_SIR_SIN_2_20181011T181845_20181011T181939_C001	SARIn X-track Angle Error, Surface Model Unavailable	An ambiguous angle was detected for SARIn mode and no DEM or Slope Model was used for one or more records
CS_OFFL_SIR_SIN_2_20181011T190800_20181011T191117_C001	SARIn X-track Angle Error	An ambiguous angle was detected for SARIn mode for one or more records
CS_OFFL_SIR_SIN_2_20181011T191630_20181011T191755_C001	SARIn X-track Angle Error	An ambiguous angle was detected for SARIn mode for one or more records
CS_OFFL_SIR_SIN_2_20181011T204514_20181011T204904_C001	SARIn X-track Angle Error	An ambiguous angle was detected for SARIn mode for one or more records
CS_OFFL_SIR_SIN_2_20181011T205537_20181011T205643_C001	SARIn X-track Angle Error	An ambiguous angle was detected for SARIn mode for one or more records
CS_OFFL_SIR_SIN_2_20181011T213437_20181011T213626_C001	SARIn X-track Angle Error	An ambiguous angle was detected for SARIn mode for one or more records
CS_OFFL_SIR_SIN_2_20181011T213758_20181011T213913_C001	SARIn X-track Angle Error	An ambiguous angle was detected for SARIn mode for one or more records
CS_OFFL_SIR_SIN_2_20181011T222321_20181011T222455_C001	SARIn X-track Angle Error	An ambiguous angle was detected for SARIn mode for one or more records
CS_OFFL_SIR_SIN_2_20181011T223241_20181011T223425_C001	SARIn X-track Angle Error	An ambiguous angle was detected for SARIn mode for one or more records
CS_OFFL_SIR_SIN_2_20181011T231314_20181011T231826_C001	SARIn X-track Angle Error, Surface Model Unavailable	An ambiguous angle was detected for SARIn mode and no DEM or Slope Model was used for one or more records

6. QCC Report Analysis

The Quality Control for CryoSat (QCC) facility performs a primary survey of data products immediately after production by the PDS and LTA processing facilities. A list of the tests which raised errors or warnings is provided below.

Product type	No. Products	No. QCC Reports	No. Valid	No. Warnings	No. Errors
SIR_LRM_1B	130	130	130	0	0
SIR_LRM_2	130	130	130	0	0
SIR_LRM12	130	130	130	0	0
SIR_SAR_1B	87	87	87	0	0
SIR_SAR_2	87	87	87	0	0
SIR_SAR12	87	87	87	0	0
SIR_SIN_1B	98	98	98	0	0
SIR_SIN_2	98	98	98	0	0
SIR_SIN12	98	98	98	0	0
SIR_GDR_2	14	14	14	0	0

6.1 QCC Errors

Number of products with QCC errors:

0

6.2 QCC Warnings

Number of QCC reports with warnings 0

6.2 Missing QCC Reports

Number of products with missing QCC reports: 166
