

INFORMATION PRODUCTS



## GeoStereo

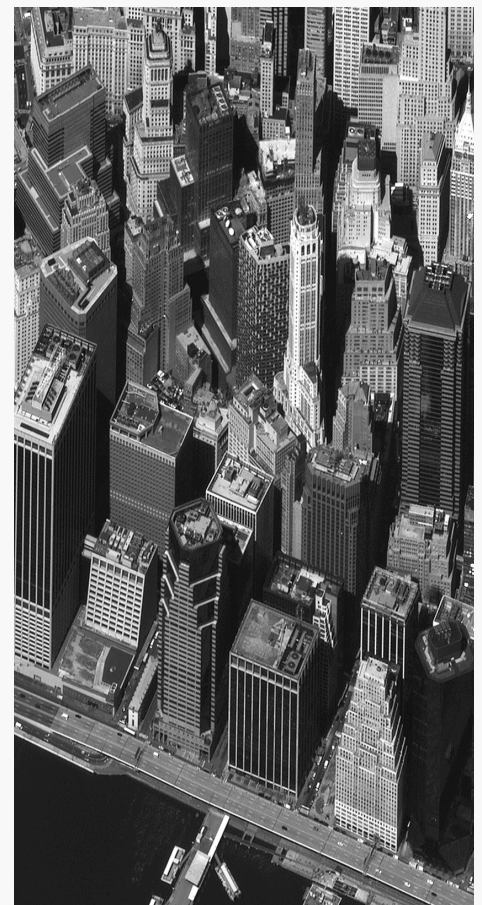
GeoStereo products are designed for users with advanced image processing capabilities and photogrammetric tools. This product is ideal for Digital Elevation Models (DEM) generation, 3D visualization, and feature extraction applications. Stereo images are collected in-track, meaning on the same orbit, and are acquired at angles optimal for stereo viewing and manipulation. Utilizing the IKONOS satellite, you can choose from a rich archive or submit a new collection request.

### Features

- » High three-dimensional accuracy
  - Stereo accuracy
    - 15.0 m CE90 at <30° off nadir
    - 22.0 m LE90 at <30° off nadir
- » High resolution
  - 80 cm panchromatic
  - 3.2 m multispectral
- » Large image swath collection size
  - 11.3 km width at nadir
- » High radiometric response
  - 11-bit digitization (up to 2,048 levels of gray scale)
- » Superior image classification and analysis
  - Discrete non-overlapping spectral bands
- » Open systems
  - Integrated camera model in most leading commercial photogrammetry software packages
  - Popular image file formats

### Benefits

- » More accurate mapping and terrain modeling results
- » Provides high density terrain posting to produce highly detailed surface data
- » Each stereo pair collected by IKONOS contains images collected at an off-nadir angle between 0 and 30 degrees. The IKONOS satellite collect stereo pairs with 30–45 degrees convergence (0.54 to 0.83 base-to-height ratio).
- » Ease-of use in commercial photogrammetry tools resulting in faster processing



New York City, New York, U.S.A.

## Specifications

### Order Parameters

<b>Product Type</b>	Panchromatic, Multispectral 4-band, or Bundle (pan + 4-band multispectral)
<b>Image Bits / Pixel</b>	8 or 11 bits
<b>File Formats</b>	GeoTIFF, NITF 2.0, NITF 2.1
<b>Resampling Options</b>	<ul style="list-style-type: none"> <li>• 4x4 cubic convolution</li> <li>• Nearest neighbor</li> </ul>
<b>Minimum AOI Size</b>	210 km <sup>2</sup>
<b>Tiling</b>	None

### Image Accuracy Specifications\*

<b>Horizontal</b>	15.0 m CE90
<b>Vertical</b>	22.0 m LE90

### Processing

<b>Collection Corrections</b>	Each stereo pair collected by IKONOS contains images collected at an off-nadir angle between 0 and 30 degrees. The IKONOS satellite collect stereo pairs with 30–45 degrees convergence (0.54 to 0.83 base-to-height ratio).
<b>Geometric Corrections</b>	DigitalGlobe provides the stereo imagery pairs with an RPC camera model file.

## Deliverables

GeoStereo Imagery can be acquired directly from the DigitalGlobe archive or you can submit a new collection request. GeoStereo is delivered based on the AOI. Products are delivered on your choice of standard digital media with all the Image Support Data files needed for photogrammetric processing, including stereo pair information, collection angles, camera model, and image metadata.

## Delivery methods



Media delivery: DVD



Media delivery: external HD



Web-based delivery: FTP

\* Up to 30° off nadir  
U.S. regulation requires imagery to be resampled to a minimum of .50 m pan and 2.0 m multispectral.