

Mapping and Monitoring Artisanal Mining from Space (3MSpace)



Gerald Forkuor, Tobias Ullmann, Benjamin Ghansah, Roland Baumhauer

Problem Statement

- ✓ Tremendous environmental degradation from artisanal mining in Ghana
- ✓ Ground-based interventions by Government mostly unsuccessful
- ✓ Persistent cloud cover limits the use of images from optical sensors

Scientific Background

- ✓ Use of open access Synthetic Aperture Radar (SAR) data largely unexplored
- ✓ Land cover changes from SAR time-series enable identification of mining
- ✓ Research on methods to detect and monitor artisanal mining at infancy

Objectives

- ✓ Determine suitable change detection methods for identifying artisanal mining
- ✓ Develop an automated, cloud-based artisanal mining detection algorithm



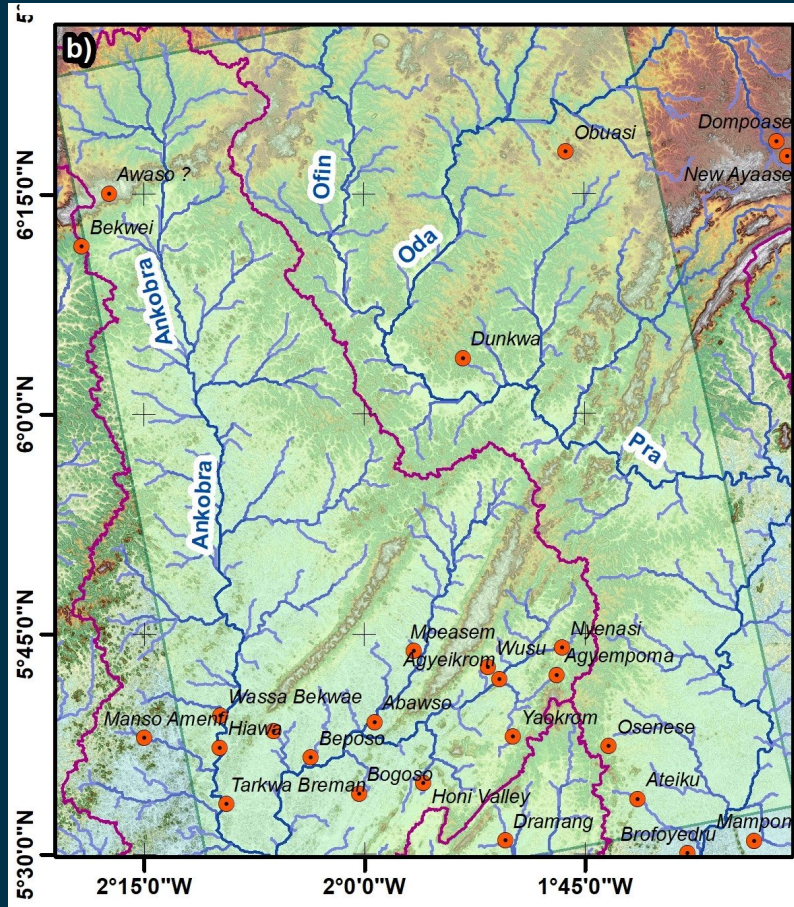
Forest degradation



Water pollution

Study Area

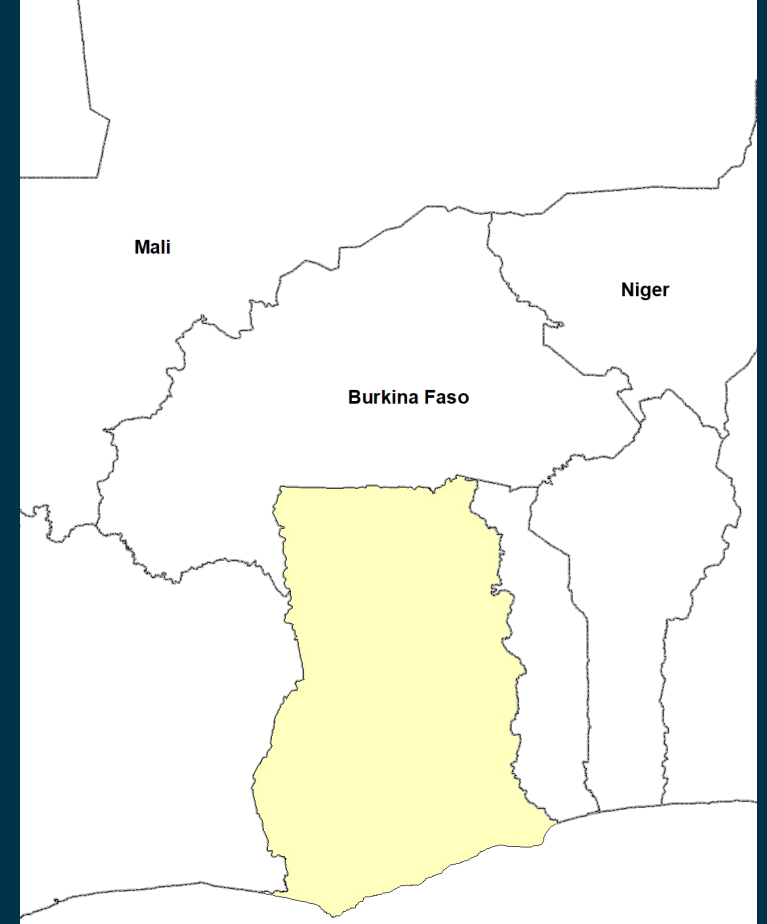
Previous, local scale



Current, national scale



Future, multi-national scale



Data

Multi-annual
Sentinel-1
time-series

VHR +
ground survey

Analysis

Metrics
Computation &
Testing Change
Detection Methods

Accuracy
Assessment &
Selection of Best
Method

Cloud-based
Implementation
(automated)

Others

Scientific Meetings; Publications; Capacity Building

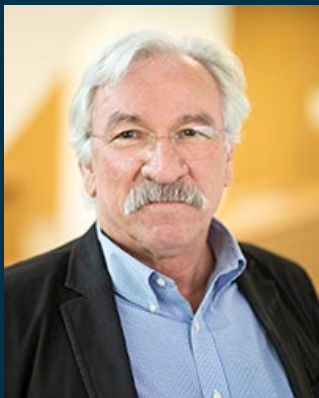
Project Team



Dr. Gerald Forkuor
Co-PI, Africa
Center for Earth Observation
& Environmental Research
<https://www.ceober.com/>
forkuor@ceober.com



PD Dr. Tobias Ullmann
Co-PI, Europe
Department Physical Geography
University of Würzburg
tobias.ullmann@uni-wuerzburg.de



Prof. Dr. Roland Baumhauer
Project Team Member
Department Physical Geography
University of Würzburg
baumhauer@uni-wuerzburg.de



Mr. Benjamin Ghansah
Project Team Member
Koforidua Technical University
Env'tal Management & Tech Dept.
<https://www.ktu.edu.gh/>
pecku2000@yahoo.com

