



DEEPER VISION SELF-TRAINED AI

AND OTHER TOOLS TO SUPPORT SECURITY APPLICATIONS

ELISA CALLEJO

UNPRECEDENTED NEEDS ON IMAGE PROCESSING

New generation optical satellites provide high resolution images representing the equivalent of **more than 100 000 screens per day**



Exploit every pixel of your images thanks to **Deeper Vision systematic & massive data processing**

WHAT DO WE OFFER?



Deeper Vision performs **automatic feature detection**, allowing the operator to focus on tasks where human expertise is critical



Deeper Vision gives an excellent **user experience** introducing **full flexibility** to better answer your detection needs

- ✓ More efficient use of operator expertise
- ✓ More value extracted from images
- ✓ 100% of images are automatically processed

SELF-TRAINED ARTIFICIAL INTELLIGENCE



Easily train your own AI detection models adapted to your business needs without needing to be an AI Expert. Then use your detection models to search for object



Generate or import training data for unlimited targets of interest, including those that are not included in traditional solutions



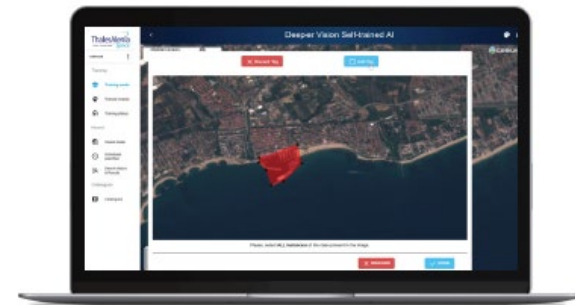
Train target detection models iteratively and monitor their performance evolution



Smart review of detection results



Schedule one-time or recurrent searches



Confidentiality guaranteed if sovereignty constraints not allowing to disclose targets of interest

Perfect fit for Service Providers, to quickly create custom models to be delivered to your clients

CLOUD READY ARCHITECTURE

Deeper Vision's architecture allows it to be hosted both **on-premises** (private cloud) or **in a secured public cloud***



Elasticity

Based on micro-services, instances are dynamically deployed by an orchestration cluster providing optimal usage of the hardware.



Reliability

Any application or service can fail without compromising the workflow.



A scenic landscape at sunset with mountains and a sunburst effect. The sun is low on the horizon, creating a bright orange and yellow glow that illuminates the sky and the silhouettes of the mountains. The foreground shows a forested hillside. Two white vertical lines with circular endpoints are positioned on the left and right sides of the slide, framing the central text.

NEAR REAL TIME OBJECT DETECTION ON VIDEO

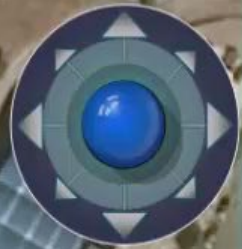
WITH TEMPORAL CONTEXT

Date:

PROPRIETARY INFORMATION
© 2019 Thales Alenia Space

THALES ALENIA SPACE OPEN

ThalesAlenia
Space



THALES

HORUS CAPTOR



07 0954 MAY2021
003°44'47.51"W
40°21'23.15"N
627.4 m



IMAGE-TO-IMAGE TRANSLATION AS A UNIQUE SOURCE OF KNOWLEDGE

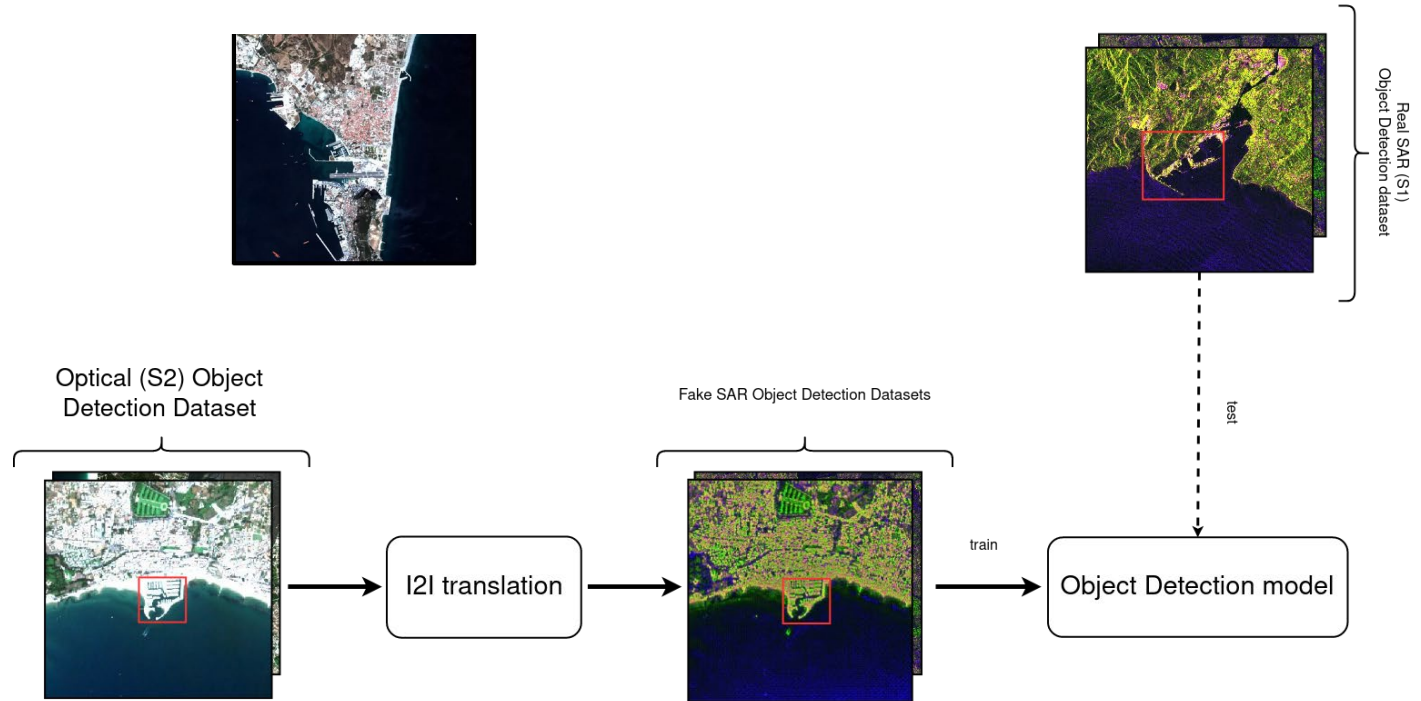
Date:

PROPRIETARY INFORMATION
© 2019 Thales Alenia Space

THALES ALENIA SPACE OPEN

ThalesAlenia
Space
a Thales / Leonardo company

I2I. IMAGE-TO-IMAGE (*)



(*) Poster 159



**Deeper Vision
self-trained AI**



**THANK YOU
FOR YOUR ATTENTION**

Elisa Callejo
e.c@thalesaleniaspace.com
deepervision.commercial@thalesaleniaspace.com



FULL ARTICLE