



living planet symposium

BONN
23–27 May
2022

TAKING THE PULSE
OF OUR PLANET FROM SPACE



Mobile Location Based Learning in Remote Sensing

Johannes Keller, Mario Blersch, Christian Plass & Alexander Siegmund

27.05.2022

ESA UNCLASSIFIED – For ESA Official Use Only

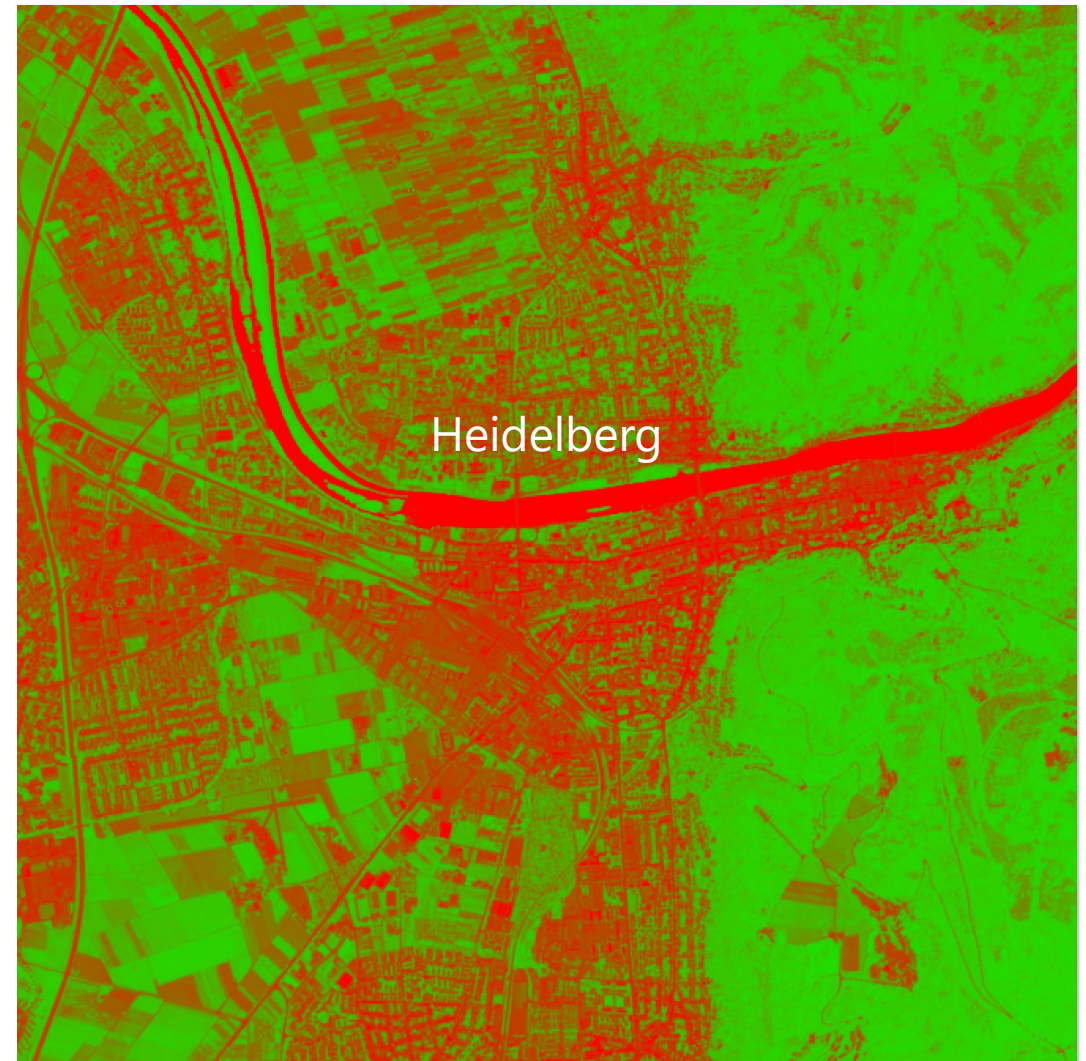


→ THE EUROPEAN SPACE AGENCY

Using satellite imagery to detect biodiversity from above...



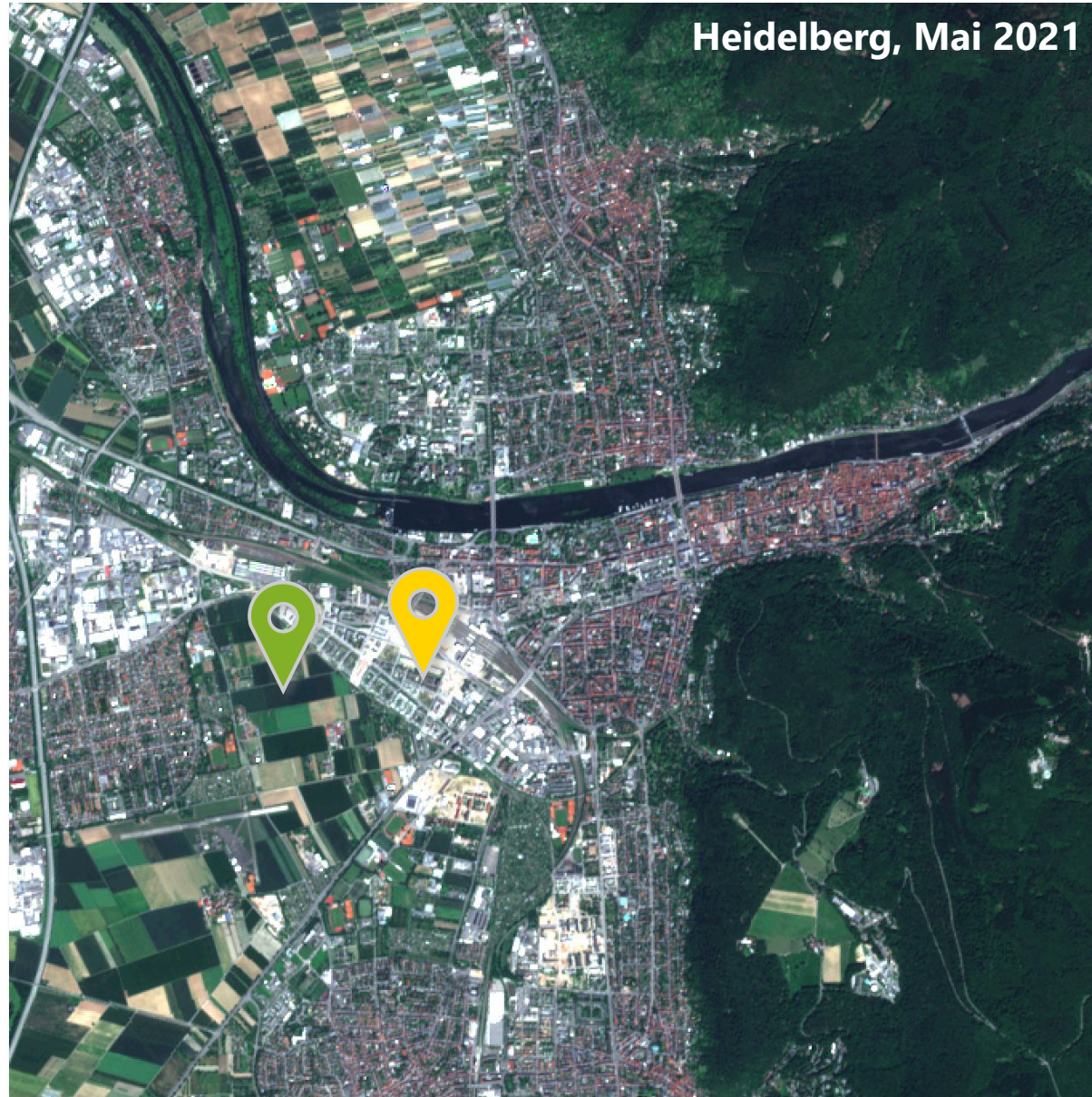
Truecolor Image – Contains modified Copernicus Sentinel data (2021), processed by BLIF



NDVI – Contains modified Copernicus Sentinel data (2021), processed by BLIF



Agriculture



Heidelberg, Mai 2021

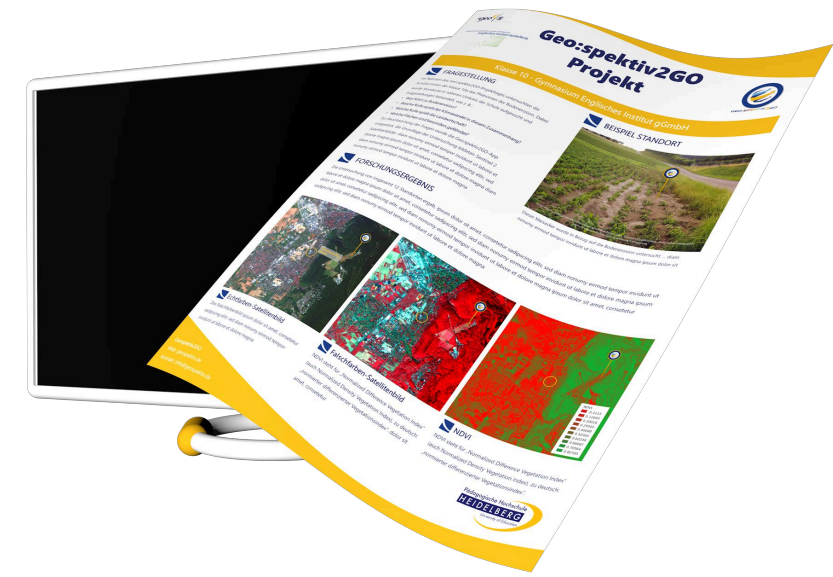
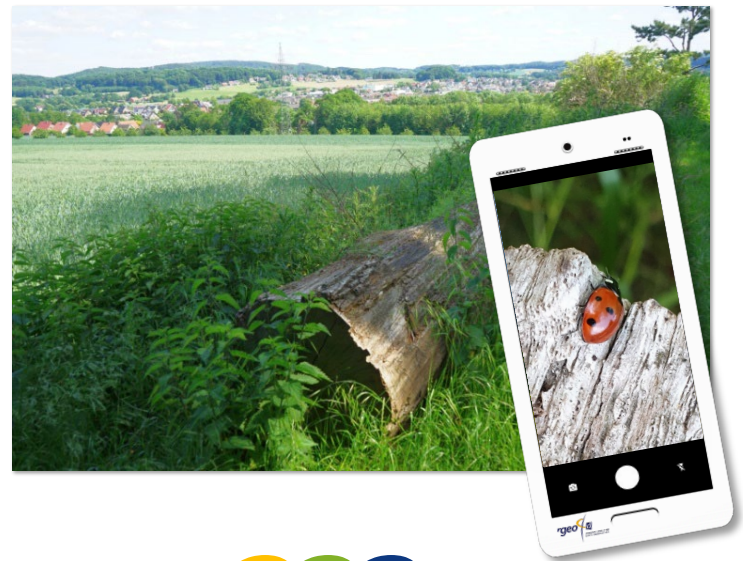
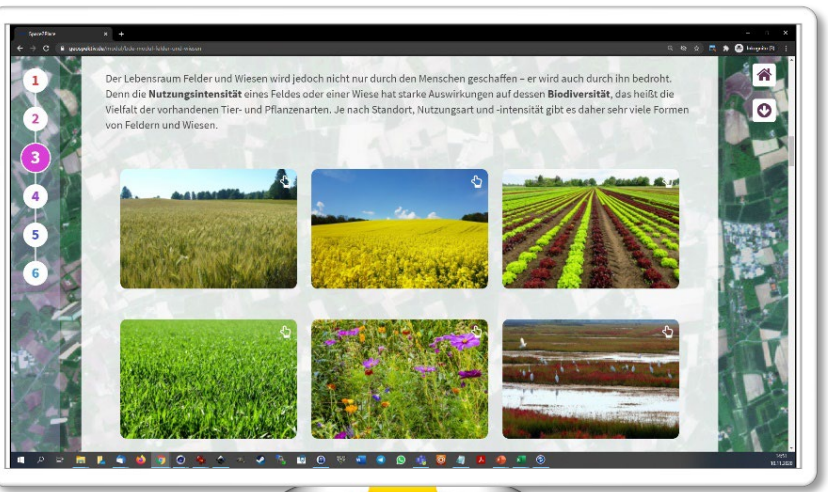


Urban Area



Curriculum related topic

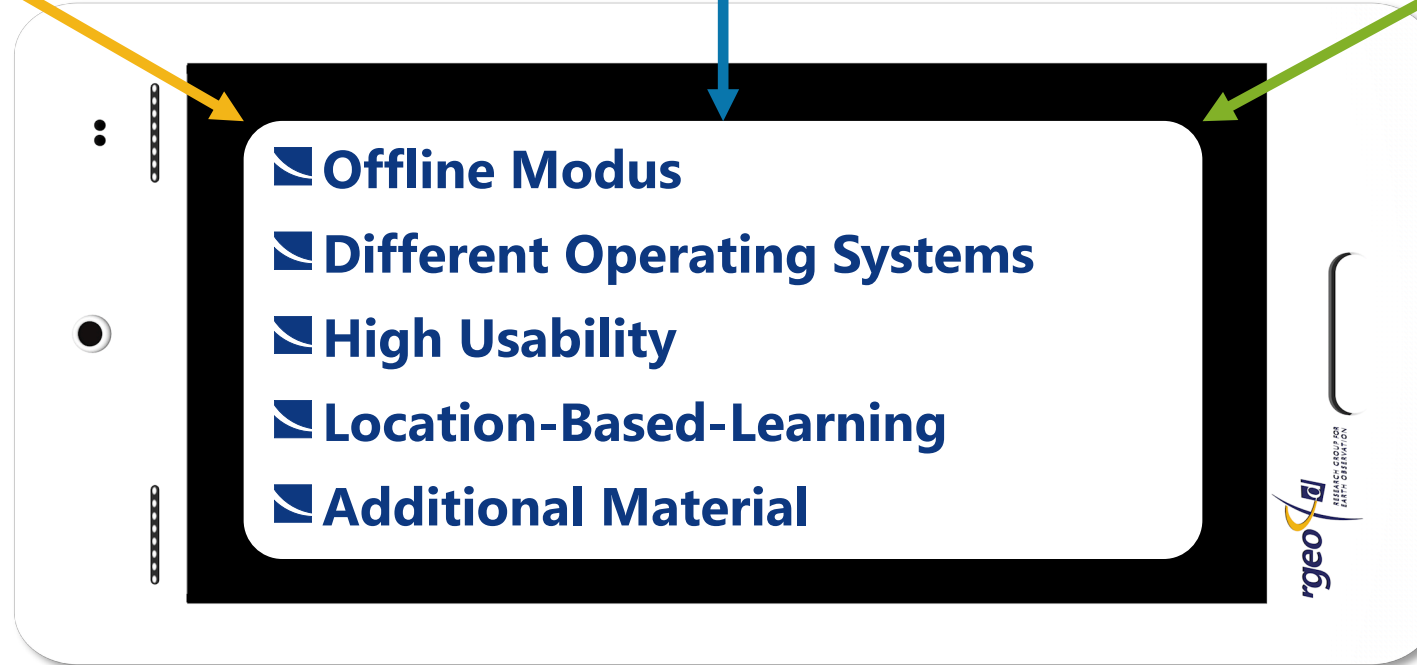
Storyline



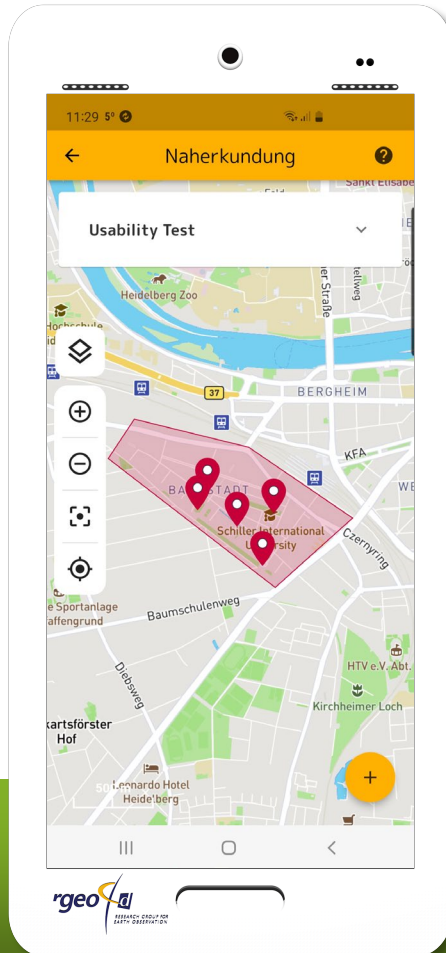
Interviews with 7 teachers

Live Tests with other Apps

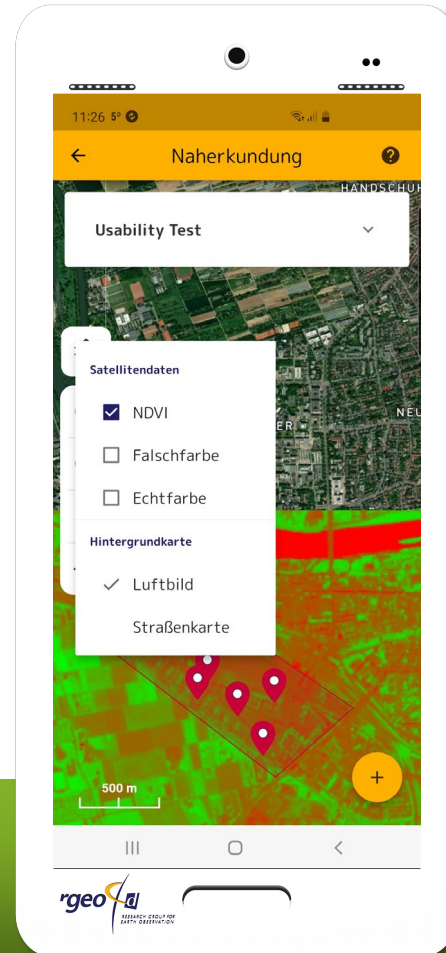
Literature Review



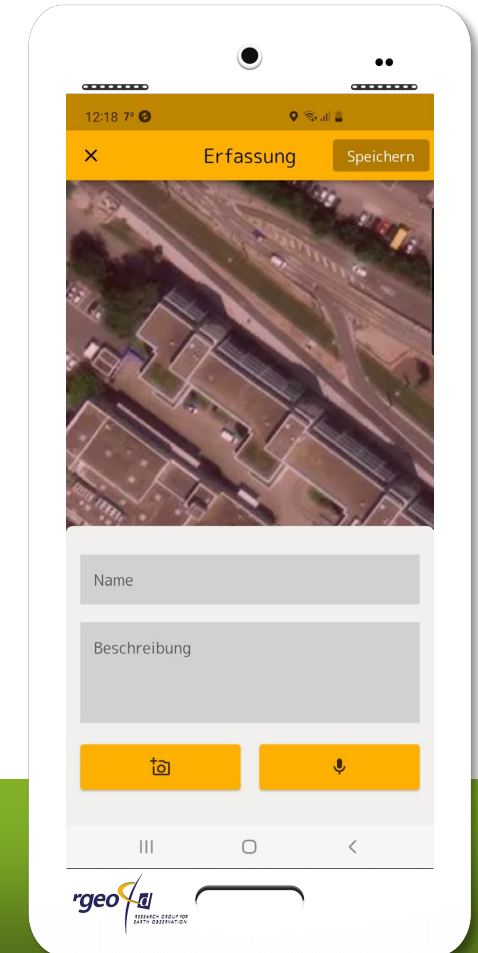
Orientation



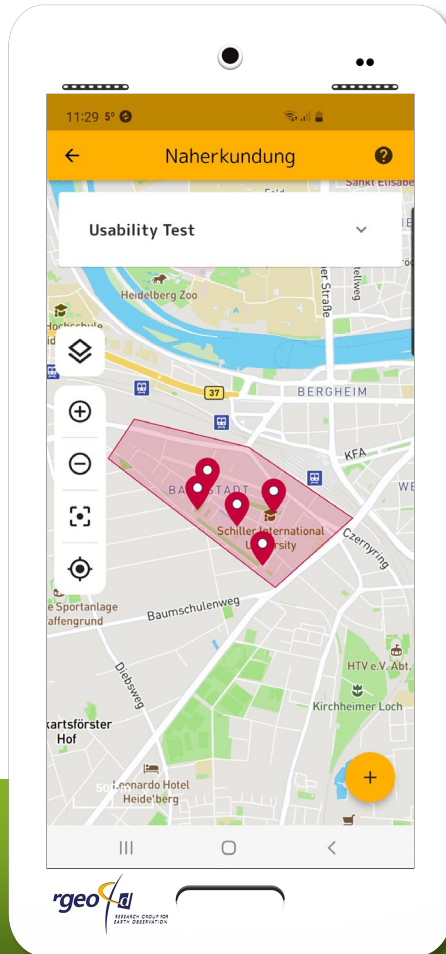
Use Satellite Imagery



Collect Data

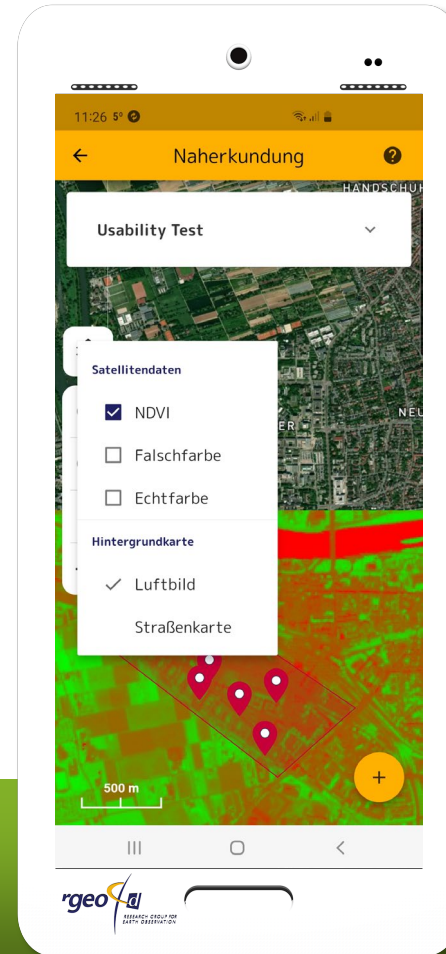


Orientation



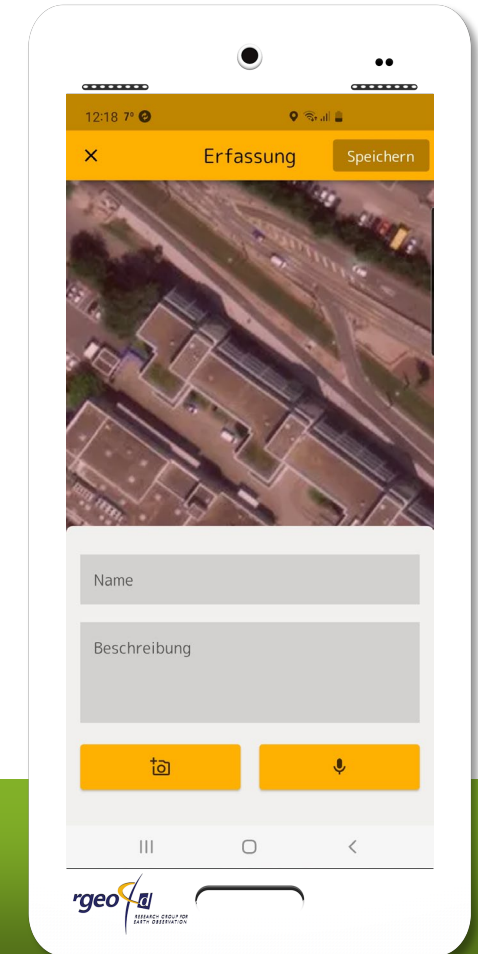
Offline Modus

Use Satellite Imagery



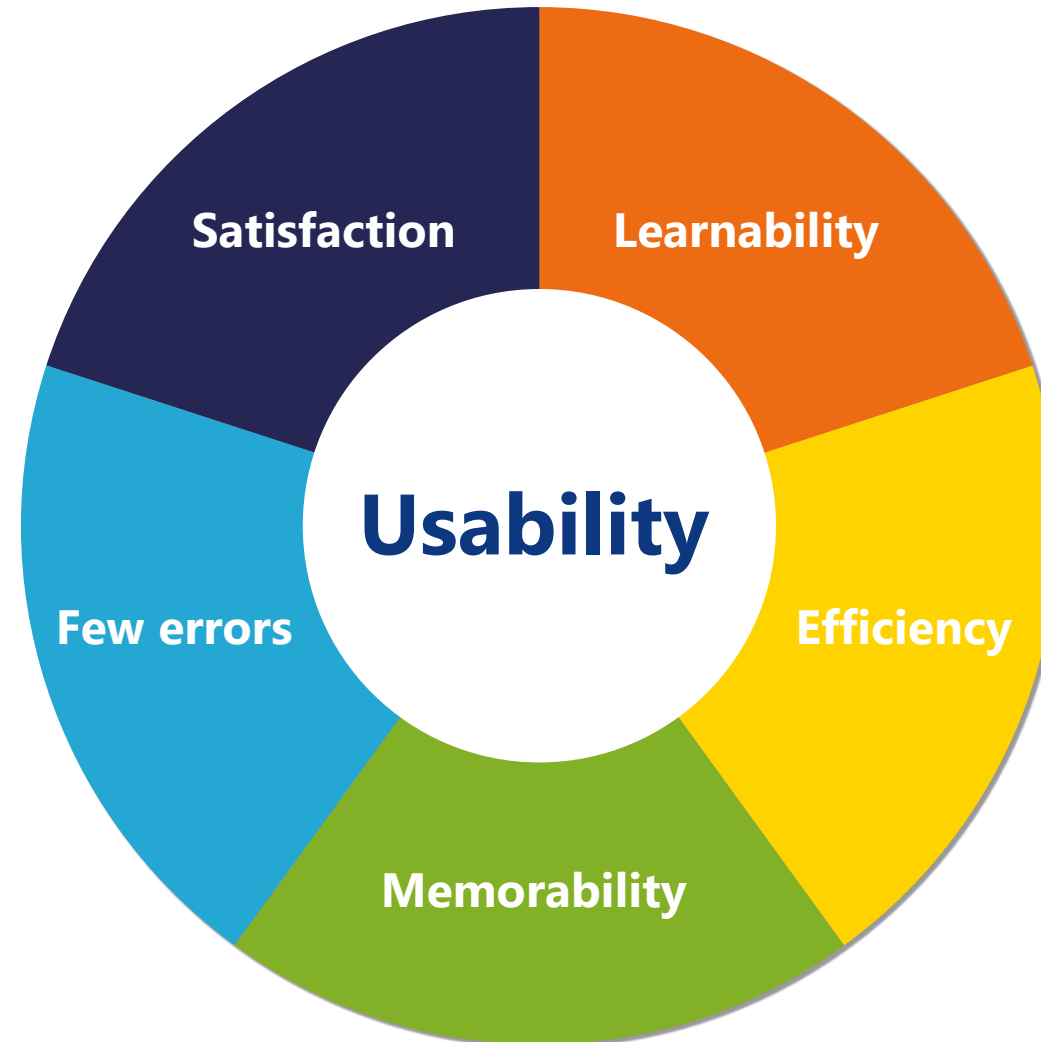
Different Operating Systems

Collect Data

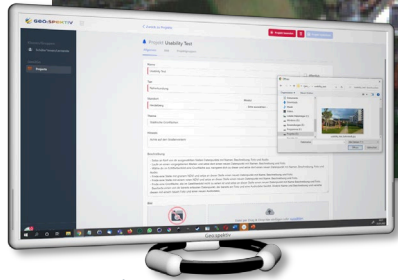


Location-Based-Learning

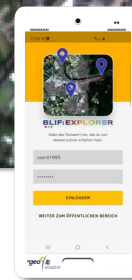
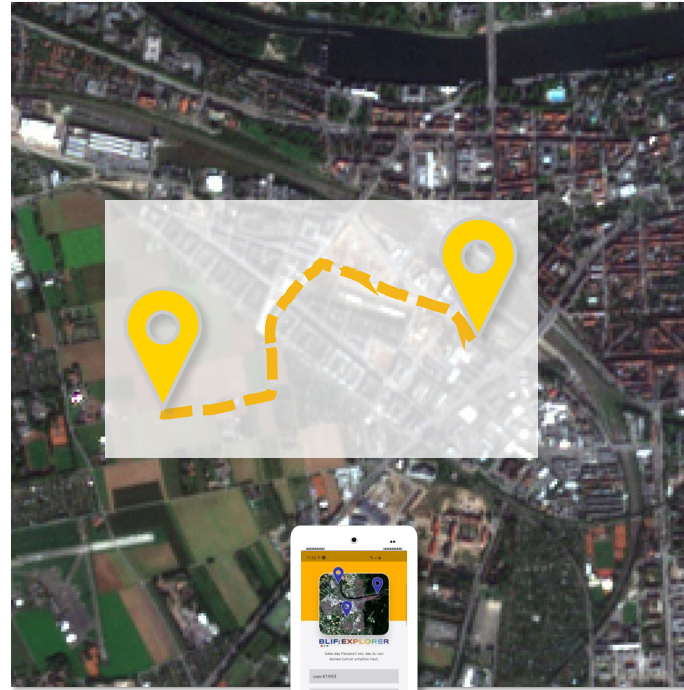
„... extent to which an App can be used by **specific users** to achieve **specific goals** with **effectiveness, efficiency,** and **satisfaction** in a **specific context of use.**“



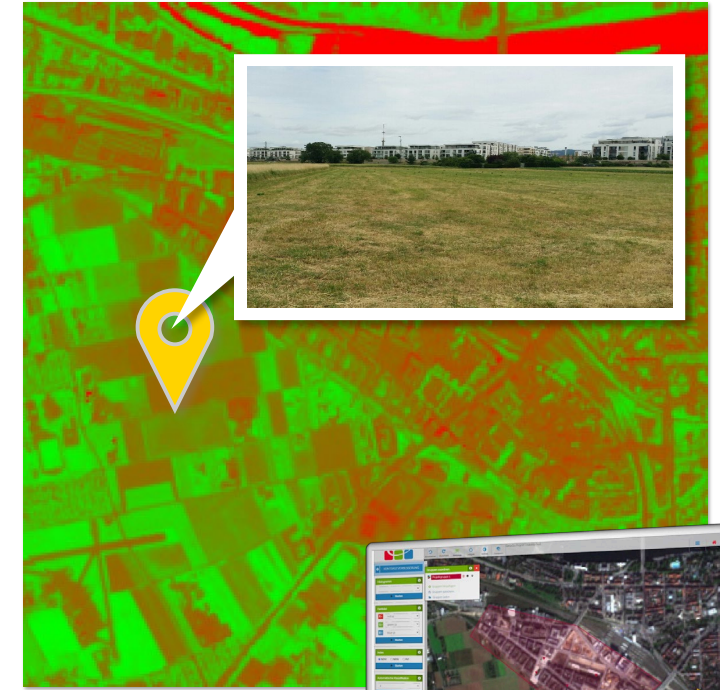
Introduction



Field Trip

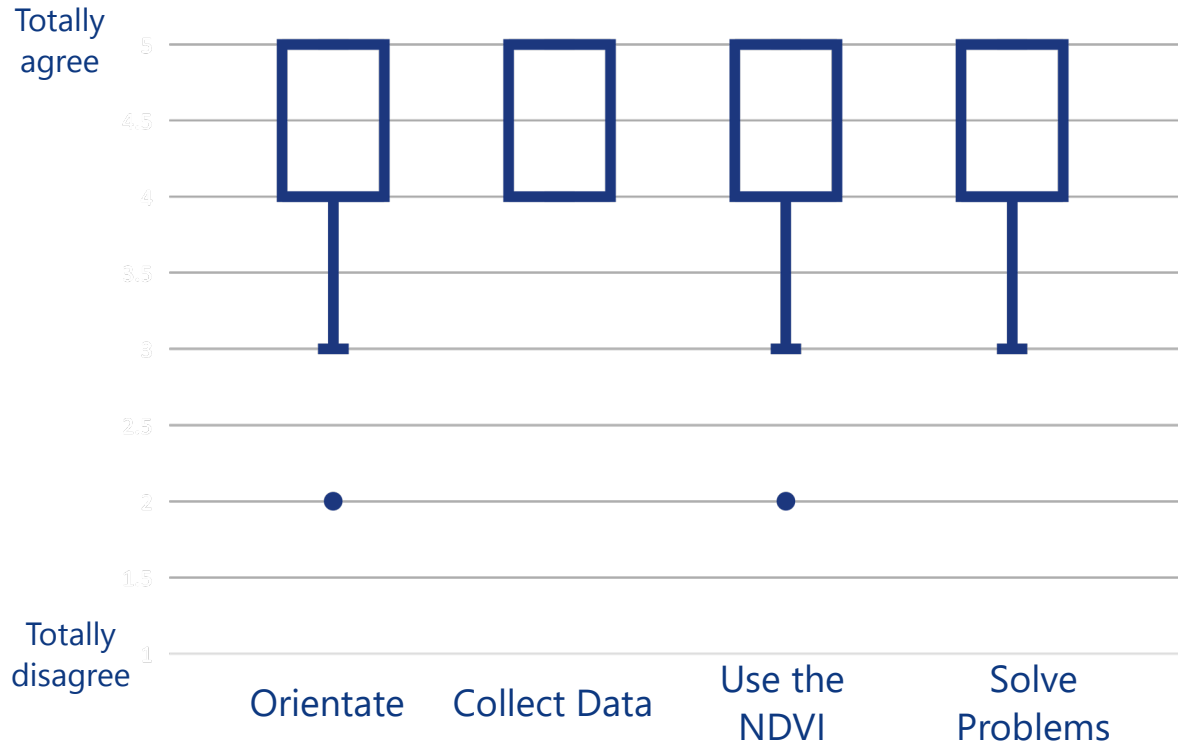


Conclusion

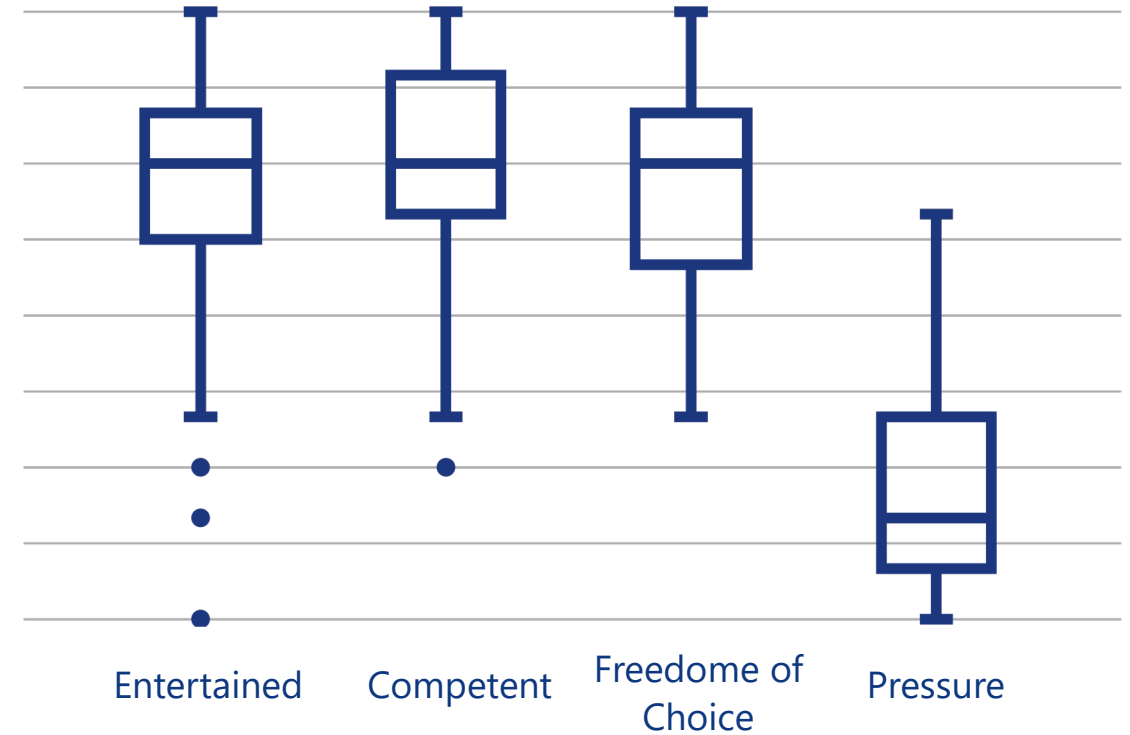


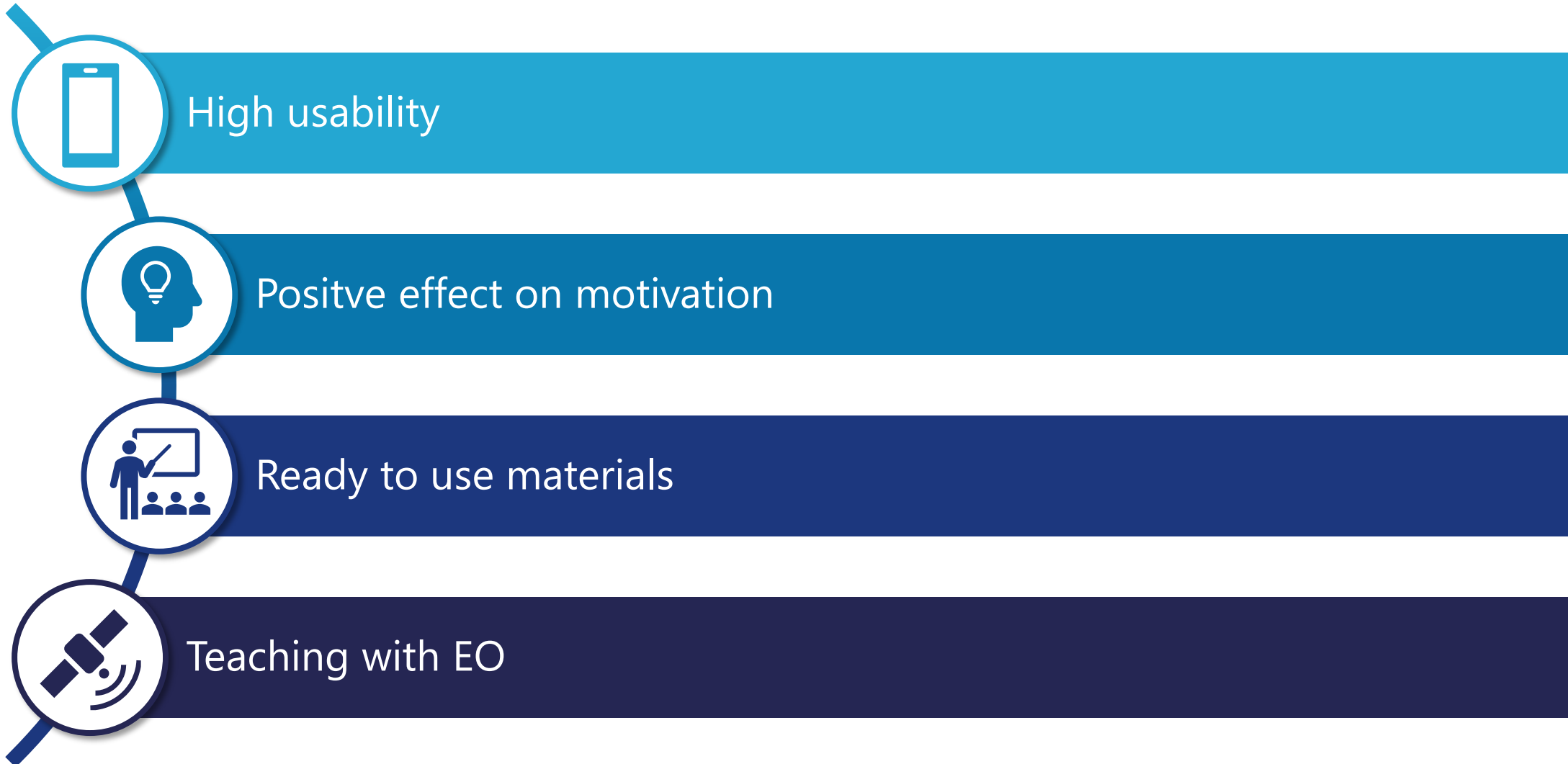
Results of the Usability Tests and intrinsic Motivation (n = 50).

„With the App it was easy to...“



„During the work with the App i felt...“



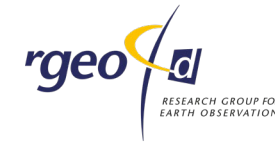




Bundesministerium
für Wirtschaft
und Klimaschutz



Deutsche
Raumfahrtagentur
im DLR



Organisation
der Vereinten Nationen
für Bildung, Wissenschaft
und Kultur



UNESCO-Lehrstuhl
für Erdbeobachtung und Geokommunikation
von Weiterbeständen und Biosphärenreservaten
Pädagogische Hochschule Heidelberg



UNIVERSITÄT
HEIDELBERG
ZUKUNFT
SEIT 1386

 **GEO:SPEKTIV2GO**
Making remote sensing mobile for students

Thank you for your Attention!

Living Planet Symposium 2022 - Bonn

Johannes Keller, Mario Blersch, Christian Plass &
Alexander Siegmund

Heidelberg University of Education & Heidelberg University
Department of Geography, Research Group for Earth Observation – rgeo