

living planet | BONN symposium | 23–27 May 2022

TAKING THE PULSE
OF OUR PLANET FROM SPACE



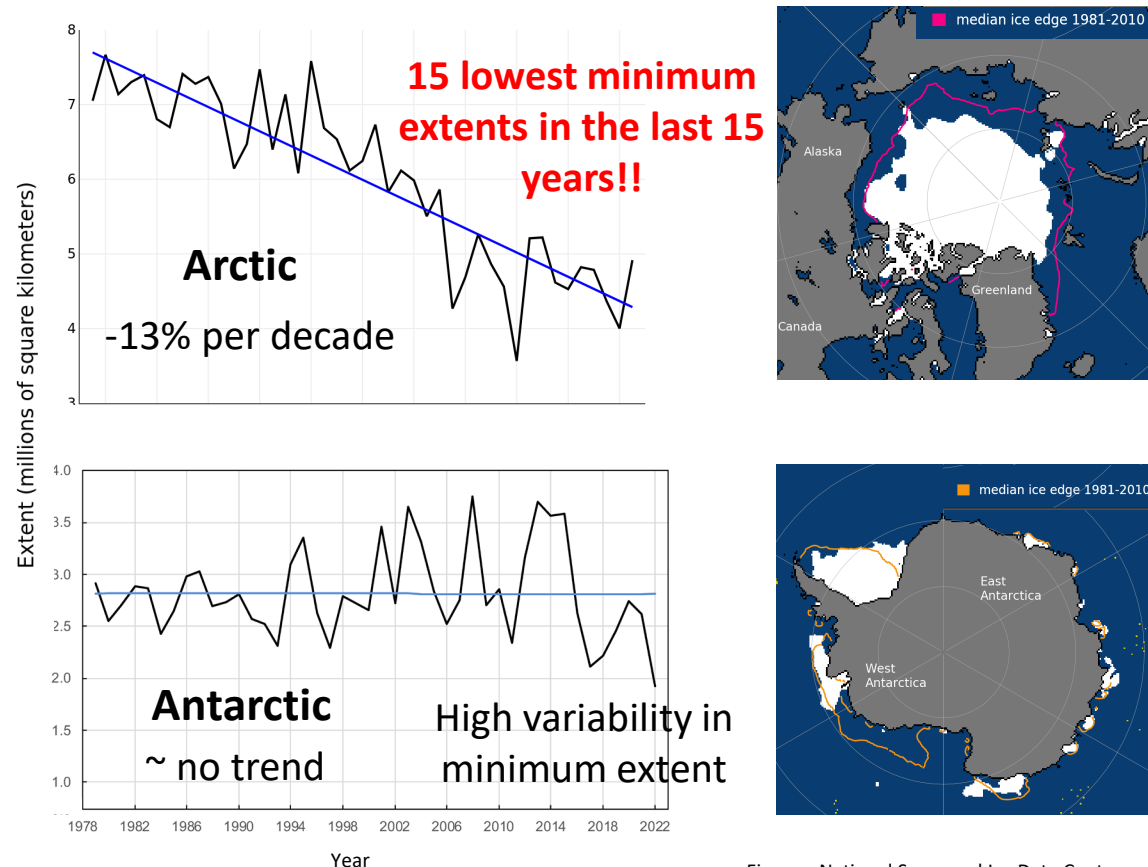
Mass balance of the Cryosphere – Where next?

Panel: Annett Bartsch, Gabriele Schwaizer, Tom Slater, Louise Sandberg Sørensen, Rachel Tilling, Michael Zemp
Chairs: Isobel Lawrence, Marcus Engdahl, Stephen Plummer

27th May 2022

Mass Balance of the Cryosphere: Global Sea Ice Cover

Current state



Figures: National Snow and Ice Data Center

Remaining challenges

- Long-term observations of Arctic-wide sea ice thickness and volume
- Any observations of Antarctic-wide sea ice thickness and volume
- Snow distribution on sea ice, and constraining uncertainties
- Ensuring continuity of satellite measurements