



KAYRROS

# Commercialisation and EO

## Geospatial technologies for a sustainable future

Living Planet Symposium 2022, Bonn

May 26, 2022



## A leader in geospatial analytics for energy and the environment

6

Kayrros offices in Europe, the US and Asia (HQ: Paris)

10+

Satellite constellations in use

100+

Proprietary algorithms in remote sensing and data fusion

150

Kayrros team with a strong focus on science and AI

### the industries we serve



#### Operators

Supply Chain Intelligence  
Asset Monitoring  
GHG Mitigation



#### Financial Institutions

Supply Chain Intelligence  
Risk Management  
ESG Due Diligence



#### Public Sector

Land Use Management  
Climate Policy  
GHG Reporting

# Eliminate methane super-emitters from the energy sector

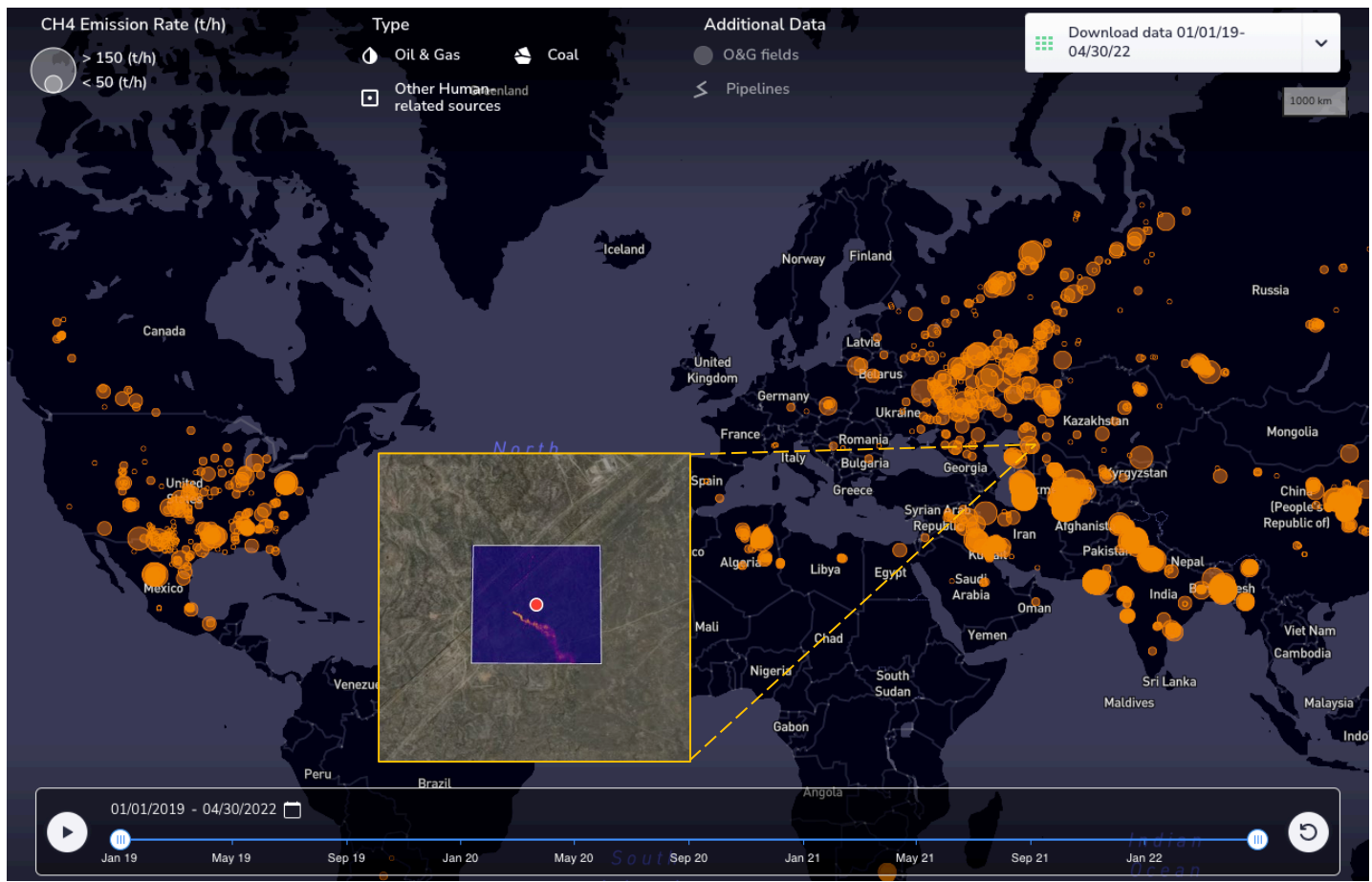
## Target Verticals

Investors | Operators | Public Sector

ESG

## Value Proposition

- Certify the production of oil & gas that is free of super-emitters
- Measure the carbon footprint of companies and supply chains



Methane super-emitters since January 2019, and example of vented emissions during pipeline maintenance in Kazakhstan

# Support voluntary carbon markets and nature-based solutions

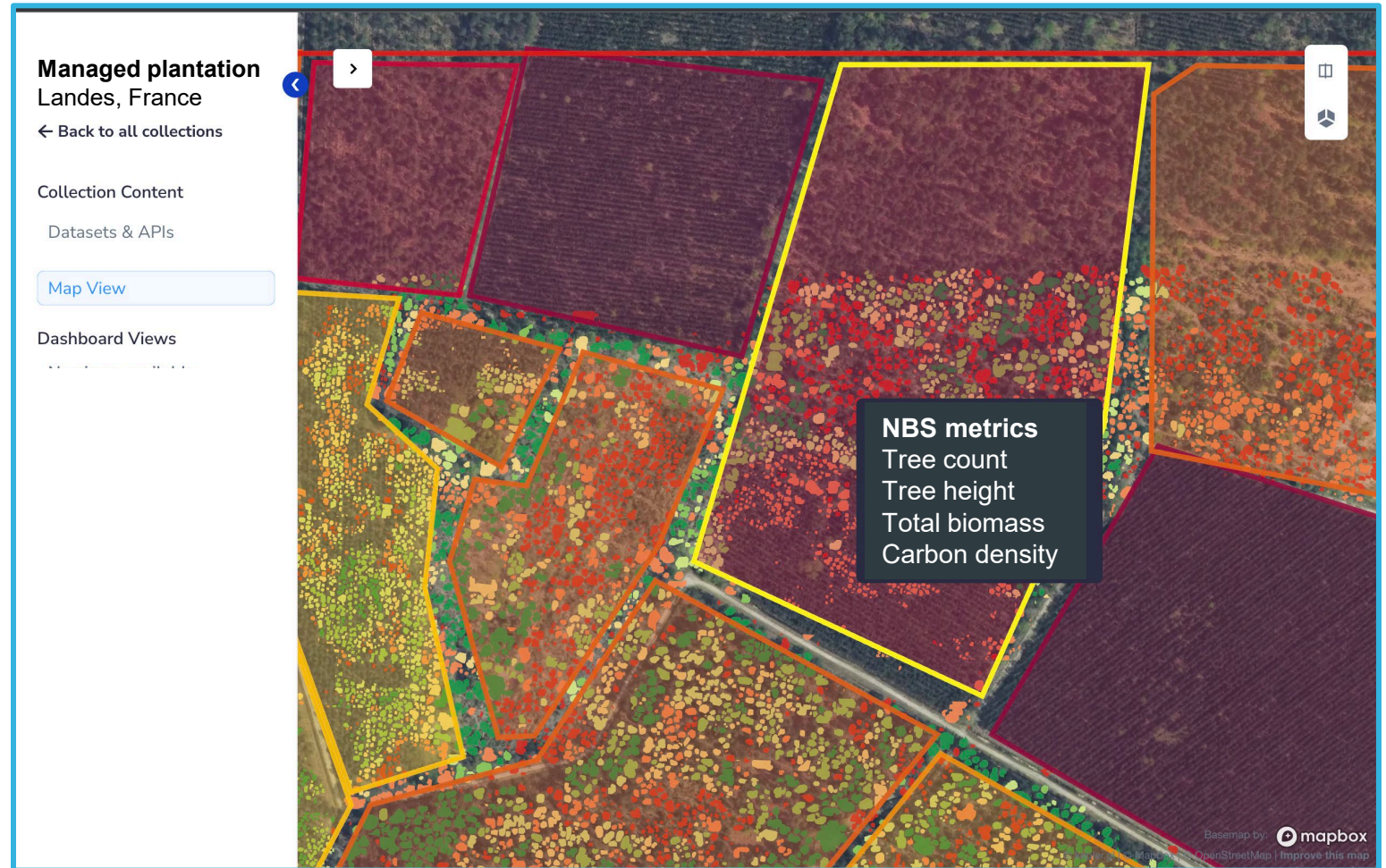
## Target Verticals

Operators | Investors | Public Sector

ESG

## Value Proposition

- Improve the integrity of carbon offsets
- Increase the project cash flow via enhanced verification



Identify individual trees, measure their height (colour sliding scale) and determine the biomass and carbon content of every parcel

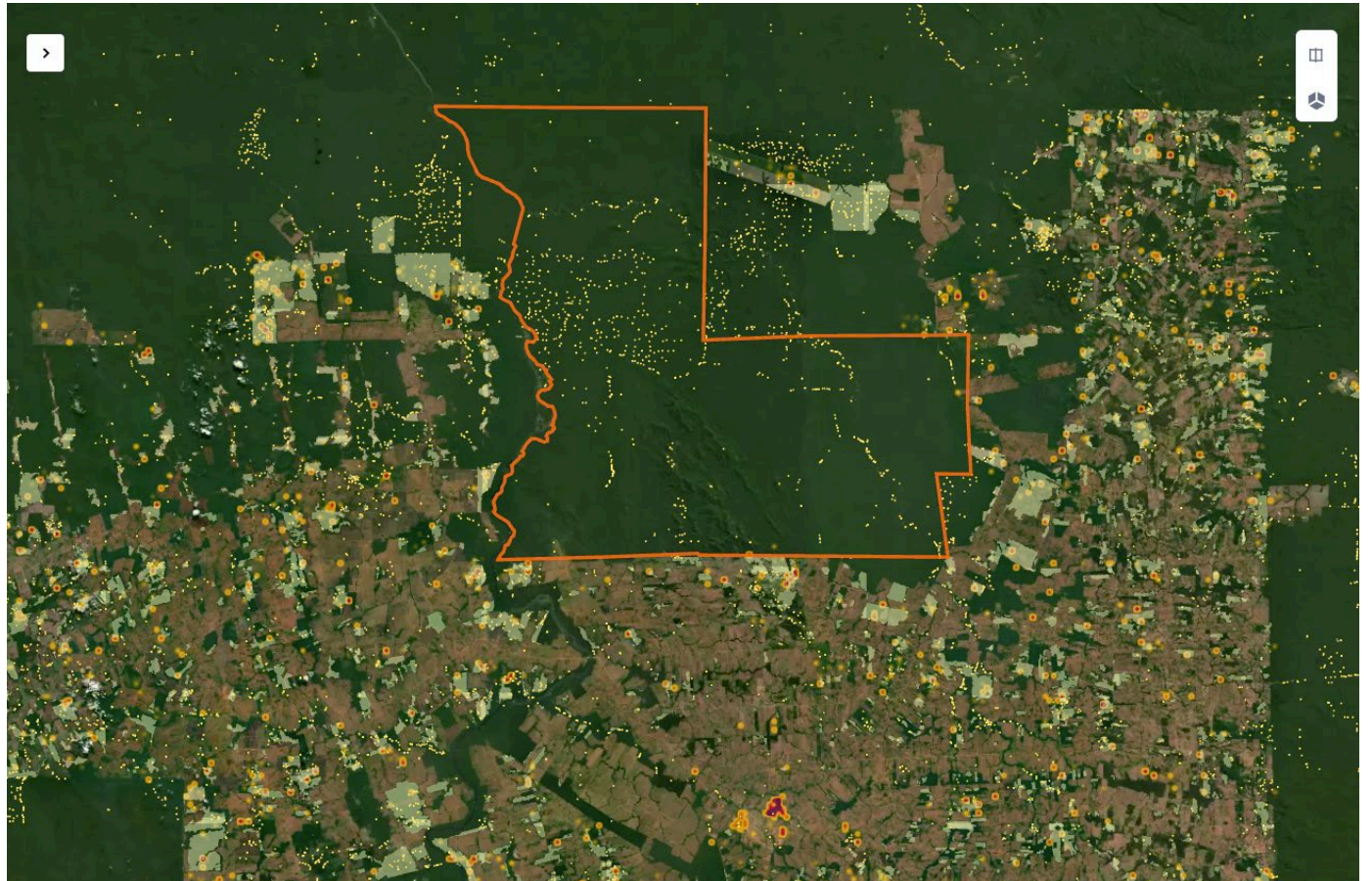
# Stop imported deforestation in agricultural supply chains

**Target Verticals** Public Sector | Operators | Investors

ESG

**Value Proposition**

- Identify non-compliant agricultural producers
- Map the supply chain from the field to the EU point of entry



Fires (red), logging (yellow) and deforestation (light green areas) in and around a sustainable forestry project (orange perimeter)

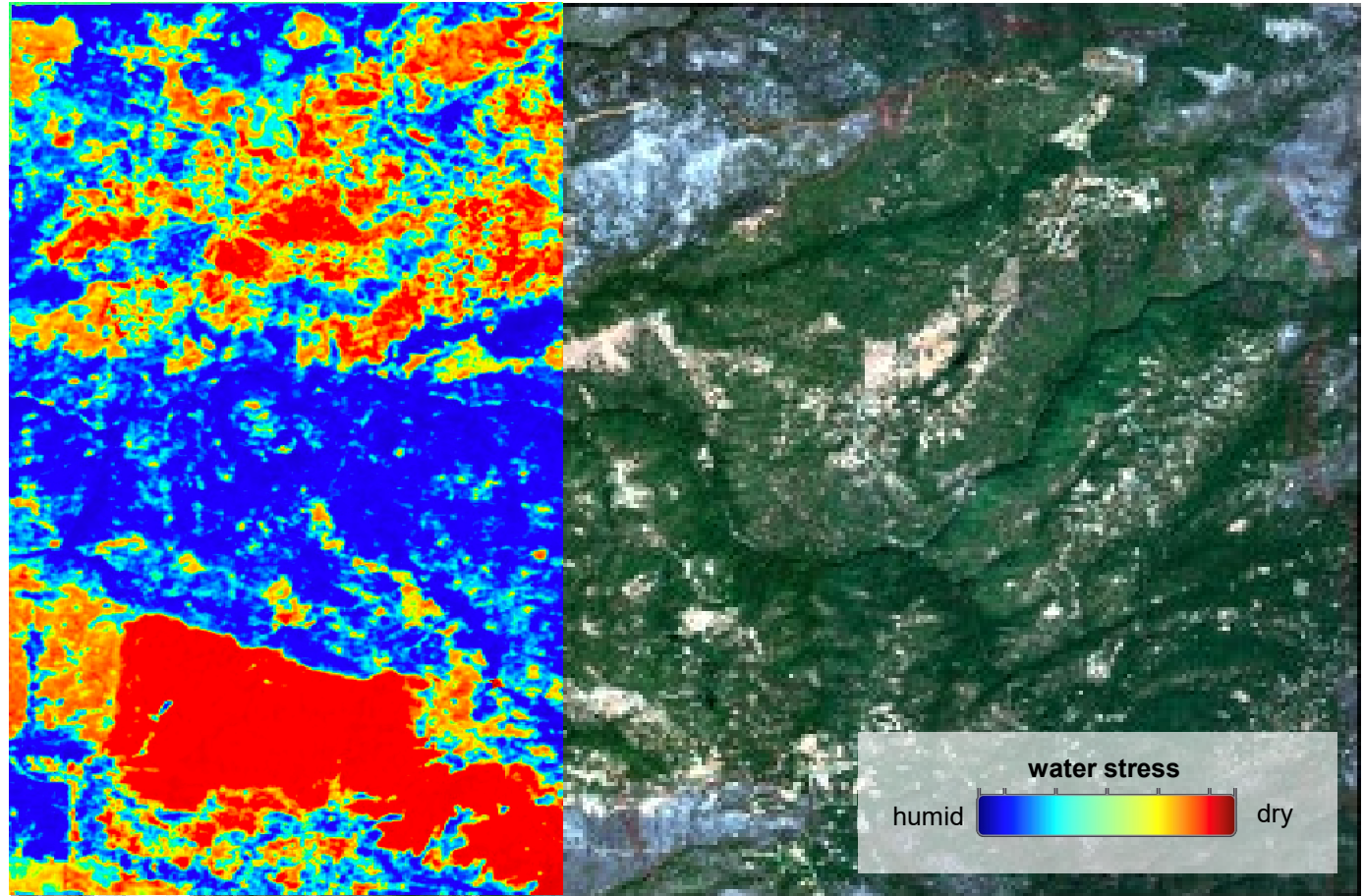
# Manage physical risks in a changing climate

**Target Verticals** Insurers | Operators

ESG

**Value Proposition**

- Reflect climate risk in insurance policies and asset valuations
- Take measures to prevent and/or mitigate risk



Areas vulnerable to wildfires based on the moisture content of vegetation



KAYRROS

**PARIS**

33 Rue La Fayette  
FR 75009

**LONDON**

3 Waterhouse Square,  
138 Holborn, EC1N 2SW

**HOUSTON**

708 Main Street  
Houston TX 77002

**NEW YORK**

300 Park Avenue  
NY 10022

**SINGAPORE**

Level 2, 15 Beach Road  
Singapore 189677



[www.kayrros.com](http://www.kayrros.com)