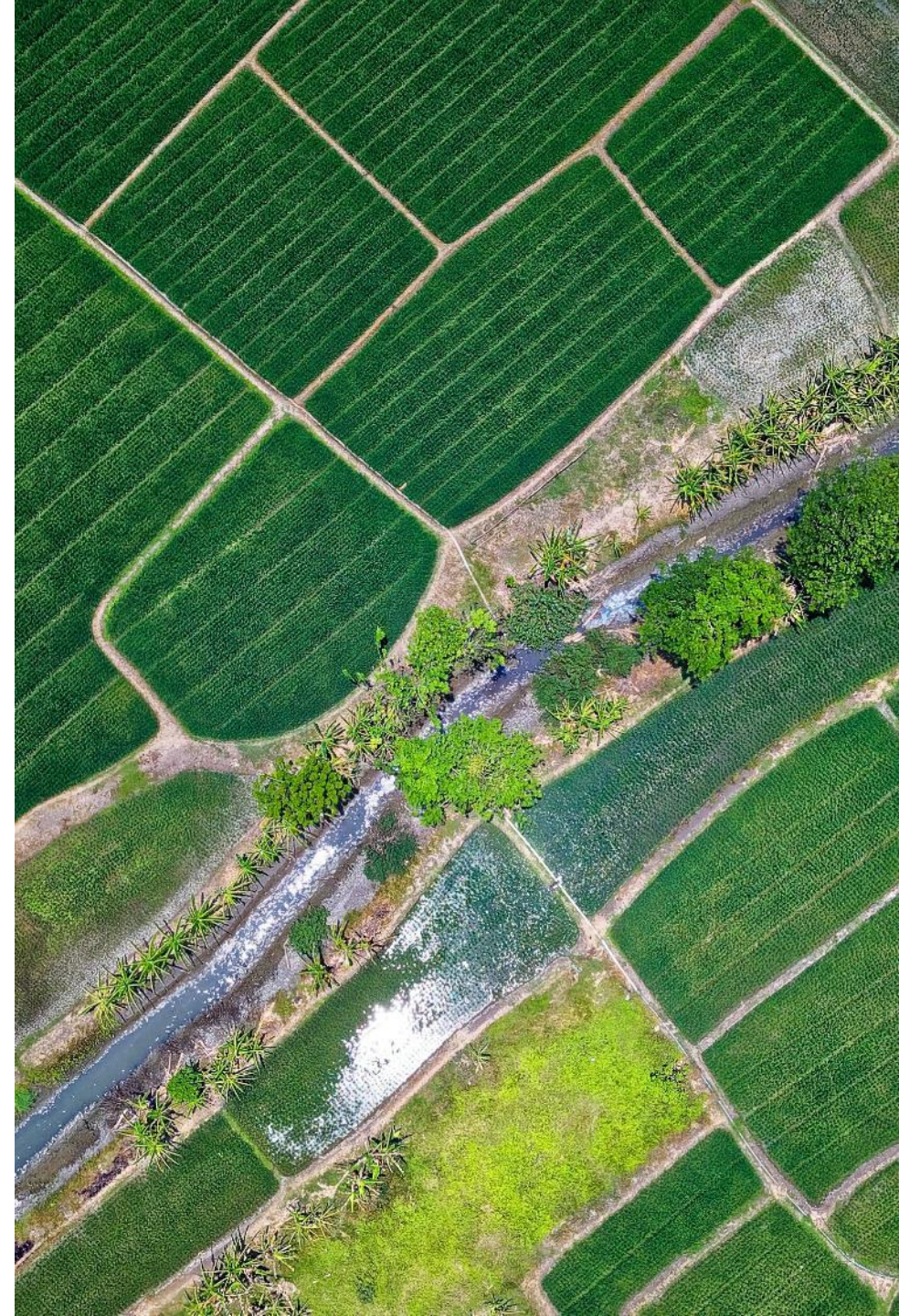


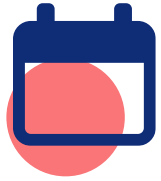


AerospaceLab

Satellites and Geospatial Intelligence

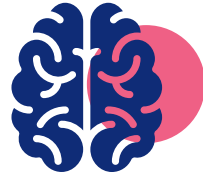


Aerospacelab at a glance



2018

Kick-Off



~140

Employees



1 + 4

Satellite in orbit +
to be launched by
end of 2023



€60m

Raised



4

Constellations
in works



€8m

Contracts signed
in 2021 alone



3

Countries



50x

Demonstrated
satellite cost
reduction

Aerospacelab is active in three segments



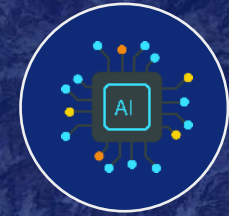
SATELLITES

Aerospacelab **designs & manufactures satellites** in its Belgian factory for its own use and third party sales.



DATA

Commercialization of **Earth Observation data**, acquired through own satellite constellations.



INSIGHTS

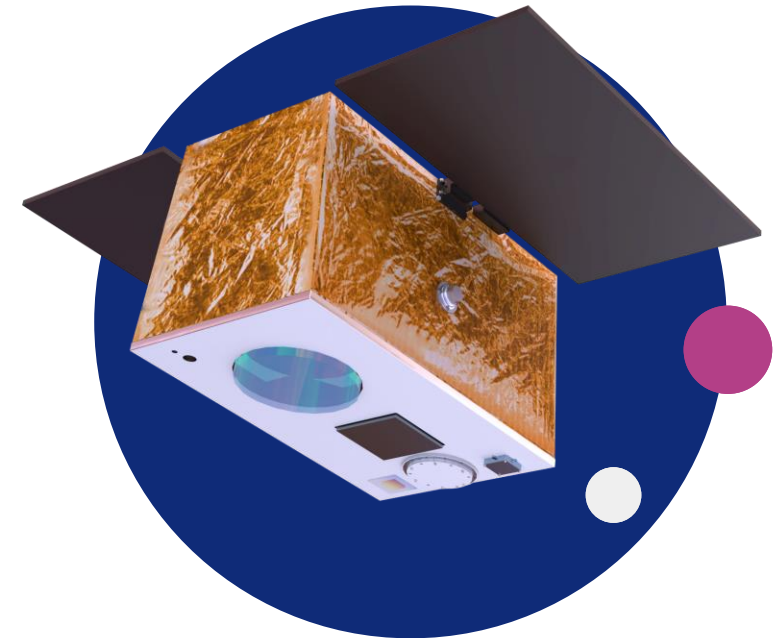
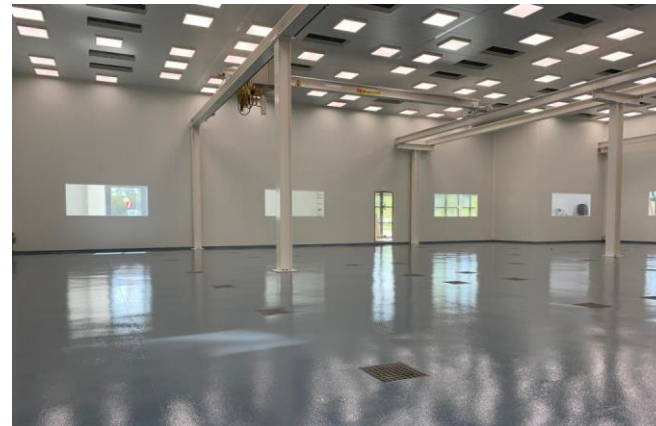
Commercialization of **actionable insights** using Artificial Intelligence and Machine learning on proprietary and third-party datasets.



Versatile Satellite Platforms

VSP (Versatile Satellite Platform) is a smallsat platform with unparalleled versatile-by-design capabilities. Aerospacelab offers cost efficient but high-performance satellite solutions thanks to its payload-agnostic approach, short lead time and the use of components validated through previous missions.

VSPs are standardized and manufactured in series at the unique Monnet factory, capable of producing 24 satellites per year.





Different data types, generated by Aerospacelab's satellites

Optical: Very High Resolution (VHR)



- Tasking-driven
- High revisit frequency
- Very-High spatial resolution

Specific use case:

- Human activities monitoring
- Industrial production assessment

Optical: Multispectral (MSCM)



- Persistent nadir acquisition
- High revisit frequency
- High radiometric resolution

Specific use cases:

- Agriculture & Food security
- Environment monitoring



Unlocking a new world of use cases



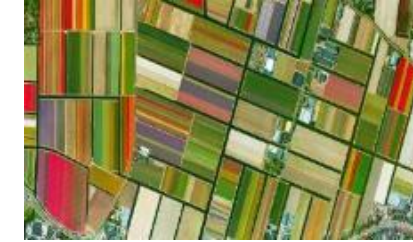
Environment monitoring



Global warming impact analysis



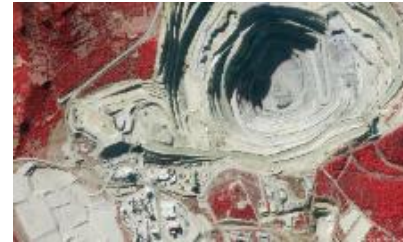
Natural disaster management



Yields maximization and forecasts



Threat detection



Support to operations



Airport activities analysis



Ports' throughput estimations



Insurance and real estate support



Critical infrastructure monitoring



Manufacturing site analysis

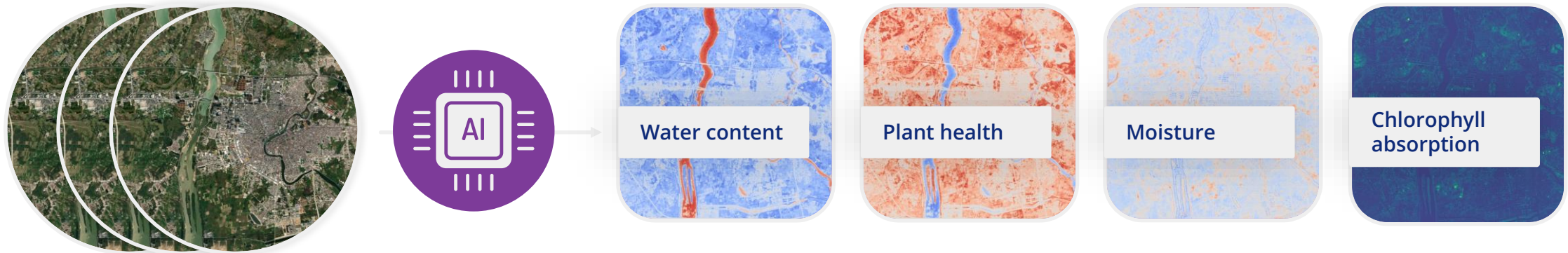


Commodities inventory levels

Satellite intelligence to address environmental and food security challenges

High frequency multispectral data

Sample of metrics



Added value



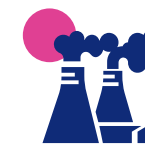
Yield increase



Freshwater consumption optimization



Chemical consumption reduction



Greenhouse gas emissions reduction



aerospacelab

Thank you for your attention

9 rue André Dumont,
1435 Mont-Saint-Guibert,
Belgium

www.aerospacelab.be

bonjour@aerospacelab.be