



# Mapping of winter crops across Europe from MODIS time series

Lorenzo Seguini\*

A. Vrieling\*\*,

M. Meroni\*,

G. Ronchetti\*,

A. Nelson\*\*



# Outline

- Objective
- Data
- Method
- Results
- Conclusions and way forward

# Objective

Crop Yield Forecasting System accuracy



Crops location

CYFS in the EU



Arable land



- Fix in time
- All crop types

Crop distribution changes



Time series length



Ground data




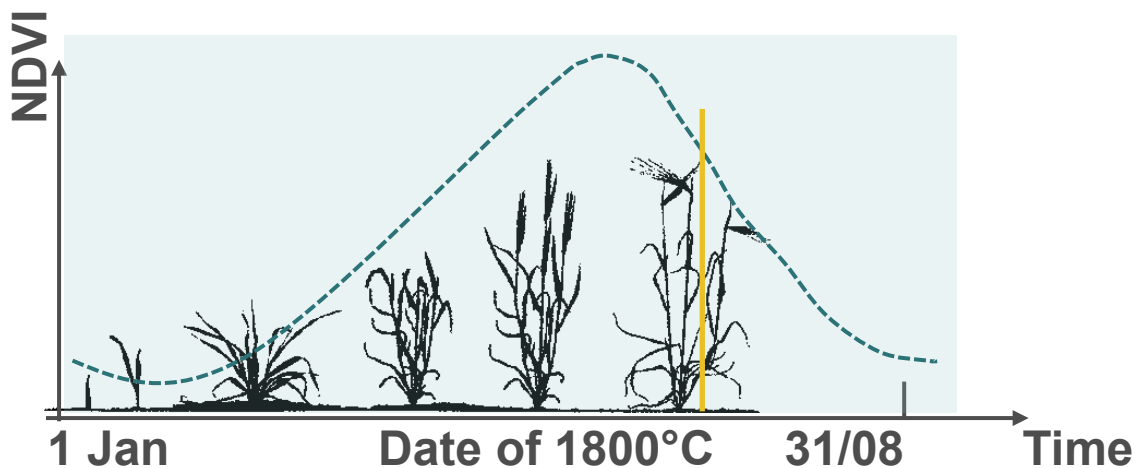
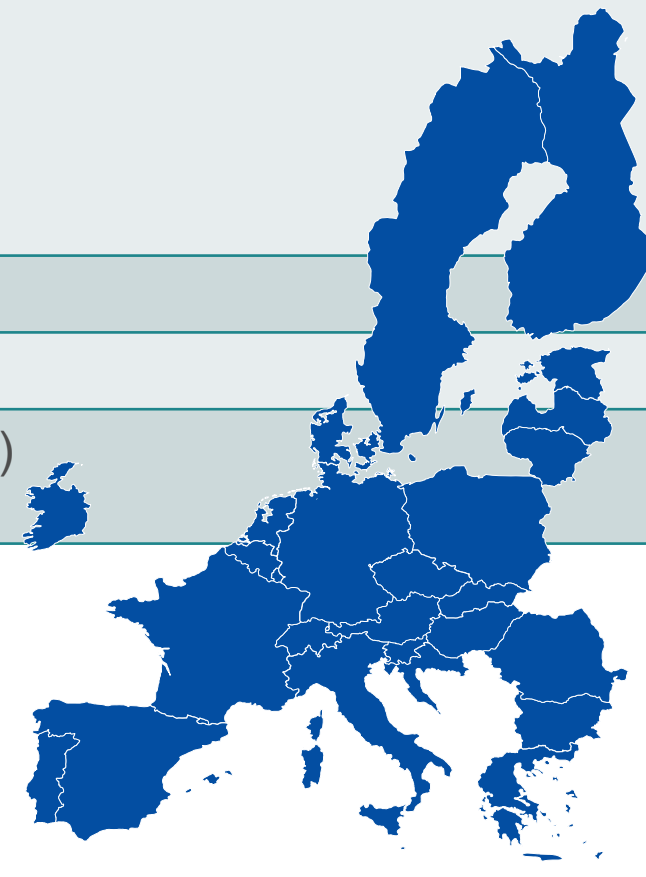
Small agricultural scale



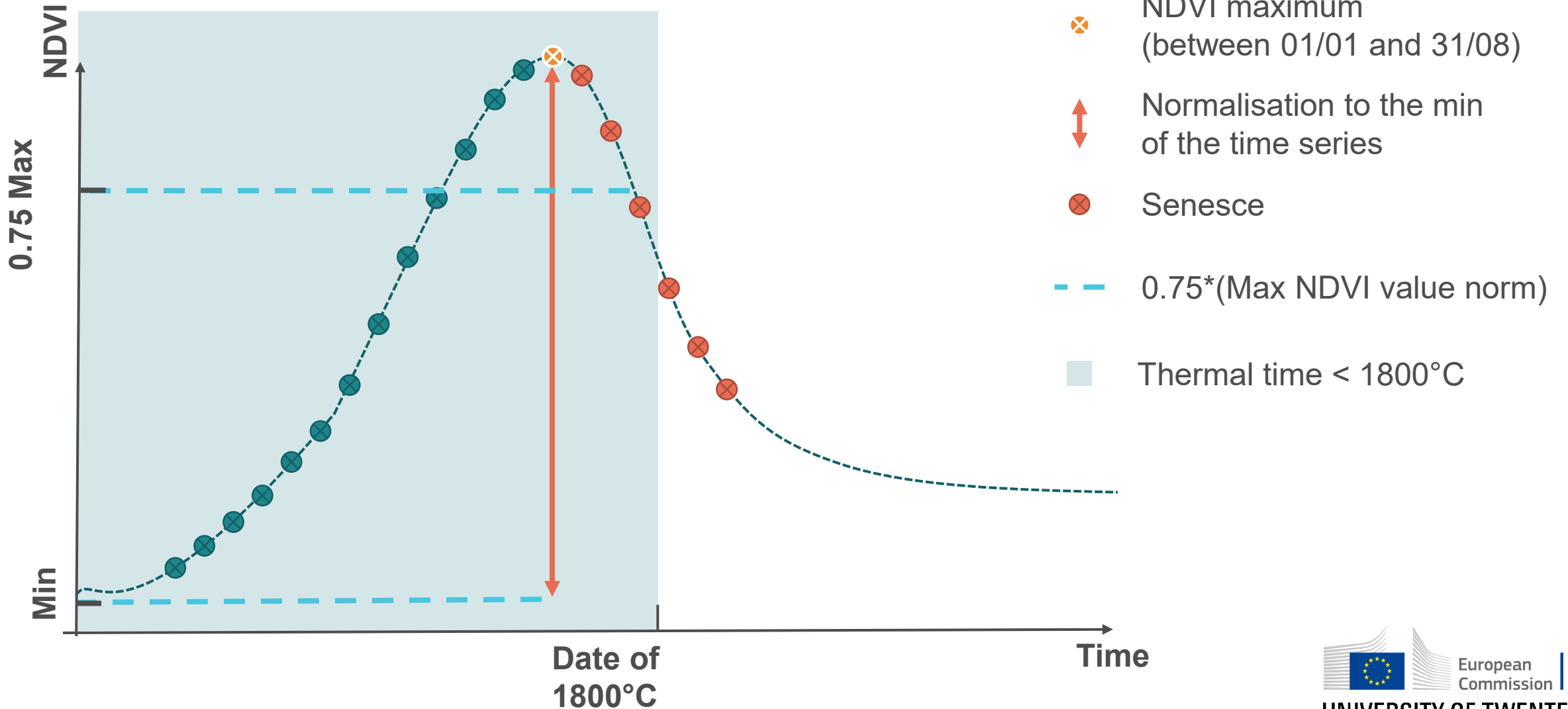
MODIS time series for yearly winter crop mapping in Europe

# Data

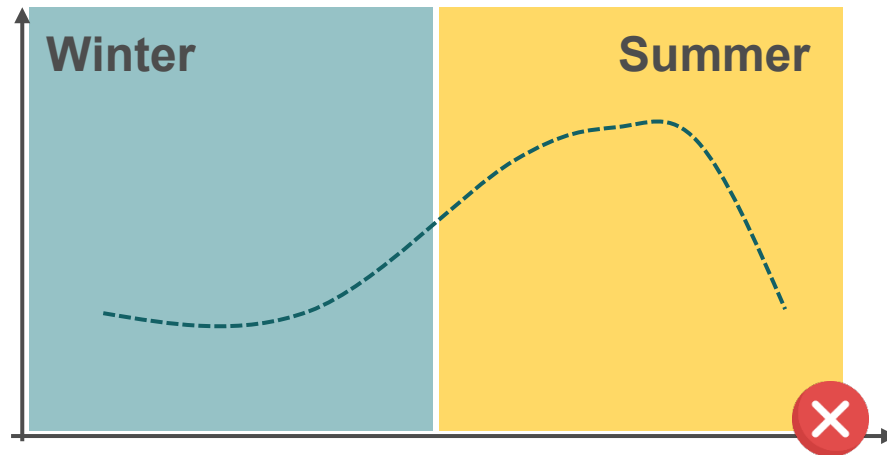
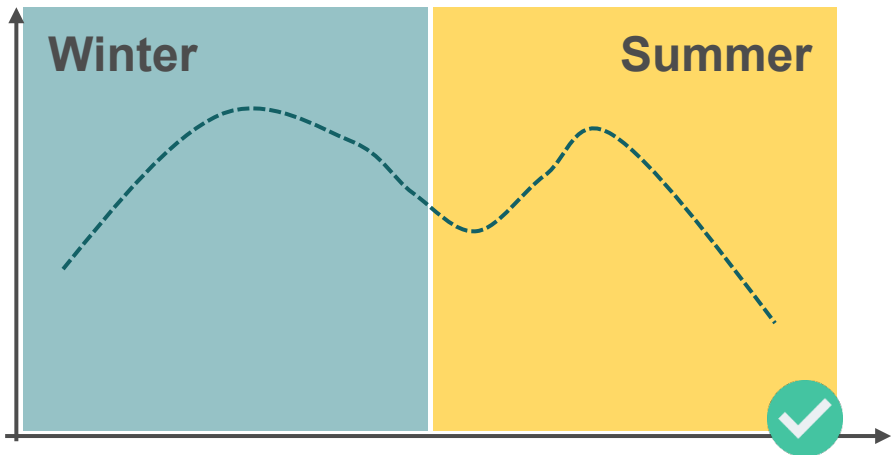
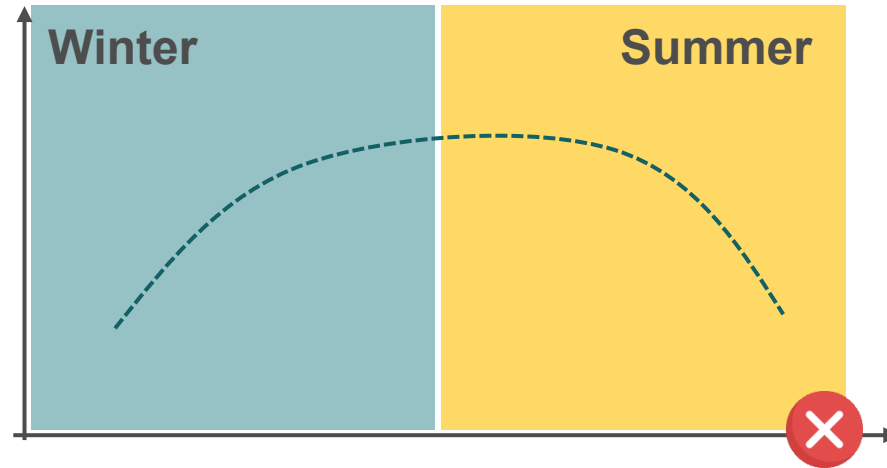
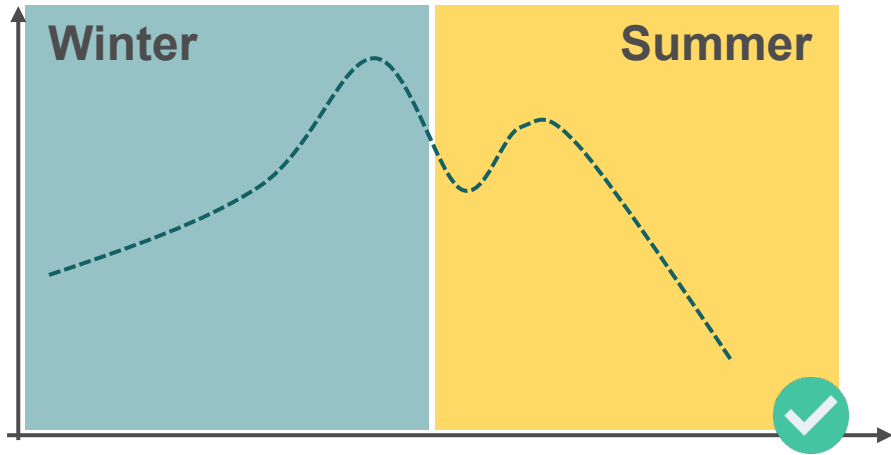
<b>MODIS NDVI time series</b> 	<ul style="list-style-type: none"><li>• NDVI</li><li>• 250m</li><li>• 2002 – 2020</li><li>• 10 days composite</li><li>• Smoothed</li></ul>
<b>Arable land map</b>	<ul style="list-style-type: none"><li>• Corine land cover</li></ul>
<b>Daily temperature</b>	<ul style="list-style-type: none"><li>• 25km grid</li></ul>
<b>Validation</b>	<ul style="list-style-type: none"><li>• EU 2018 crop map (10m)</li><li>• Regional statistics</li></ul>



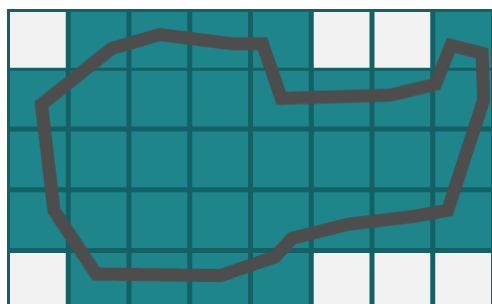
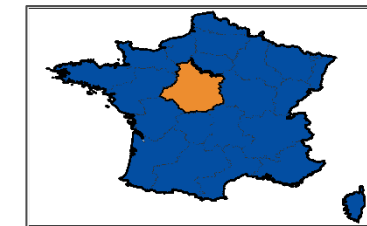
# Method



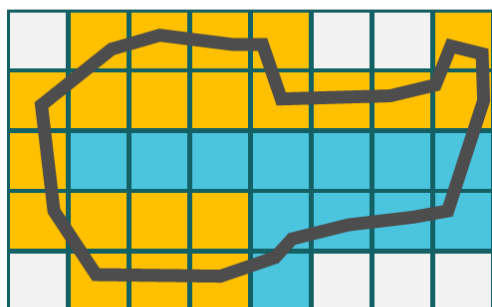
# Method



# Results



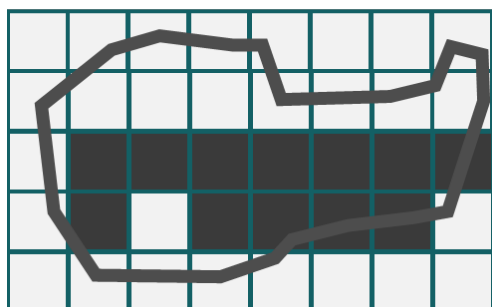
Arable



Winter



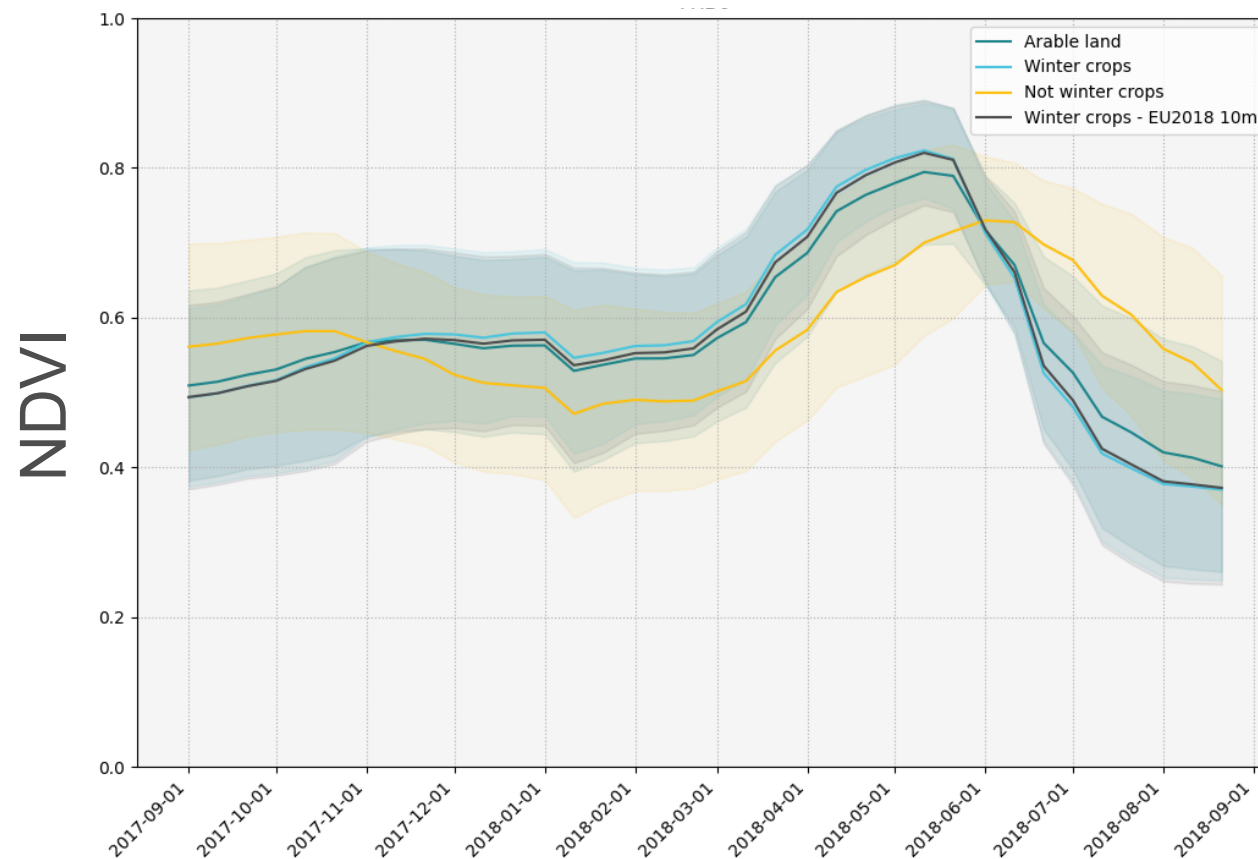
Not Winter



EU2018



## FR – Centre – 1<sup>st</sup> EU winter crops

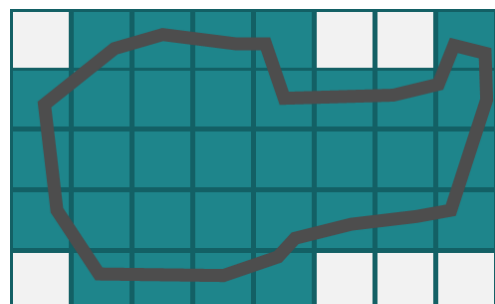
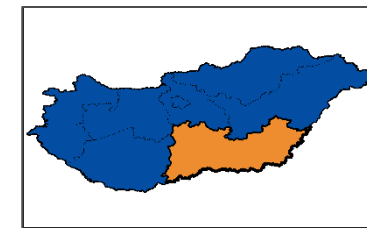


2018



UNIVERSITY OF TWENTE.

# Results



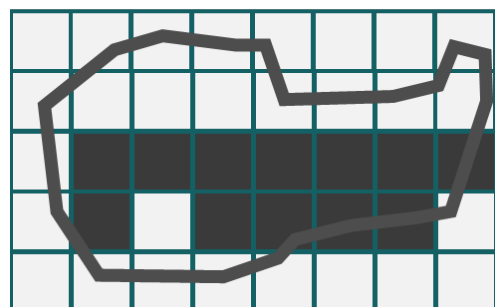
Arable



Winter



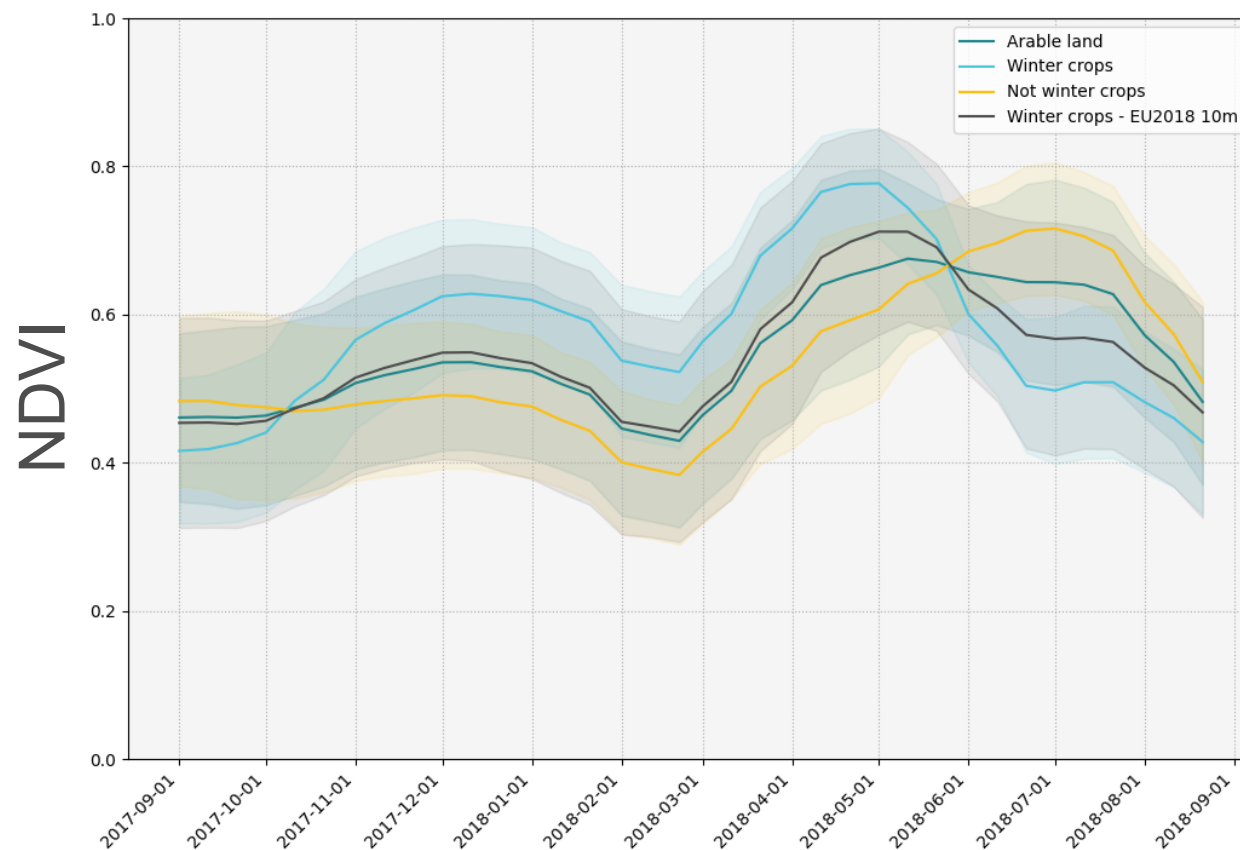
Not Winter



EU2018



## HU – Dél-Alföld – Mix

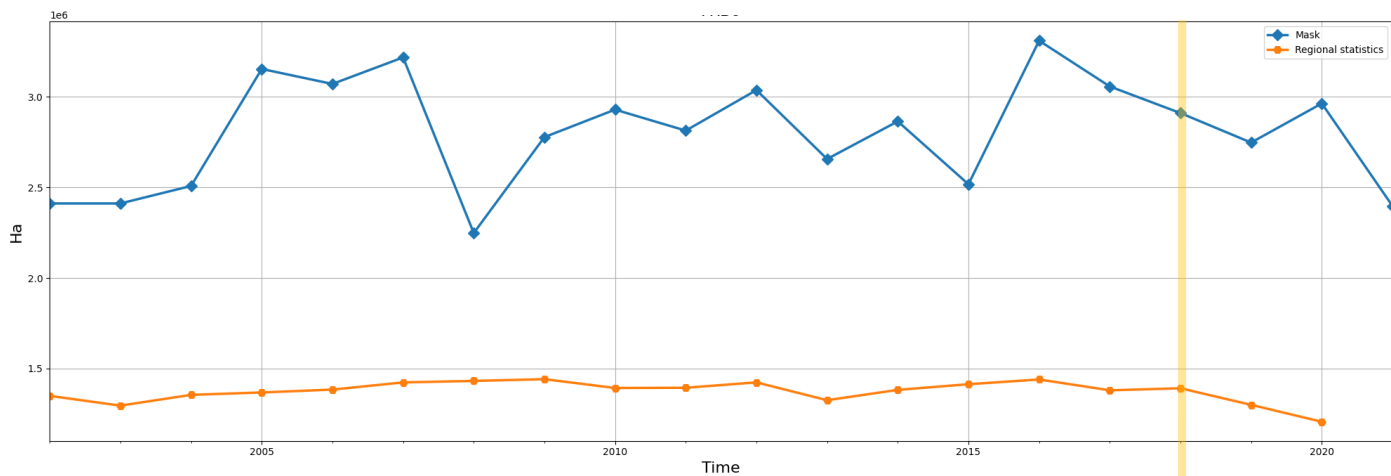


2018

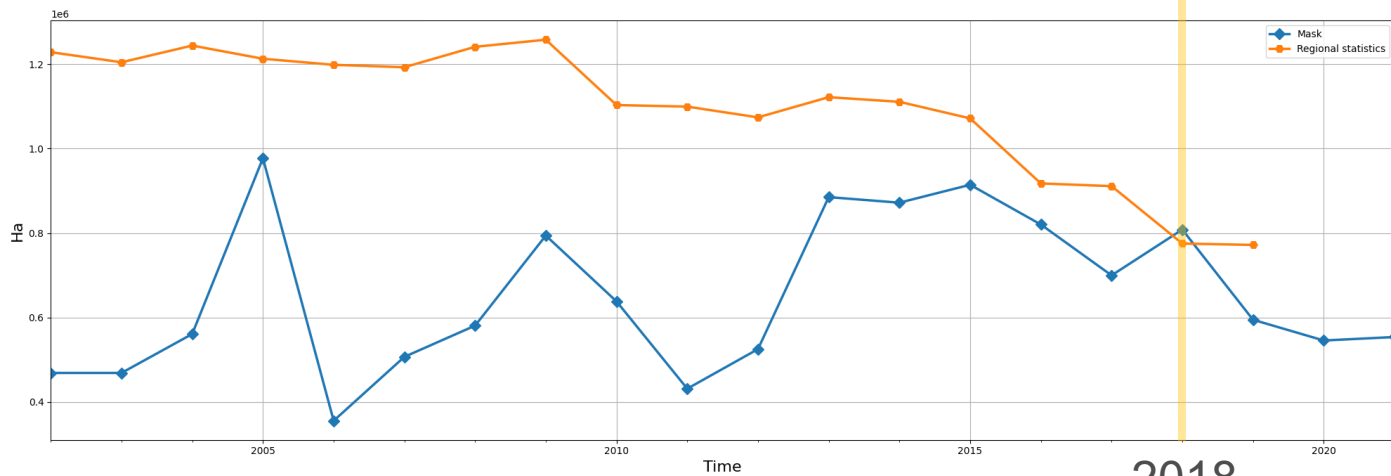


# Results

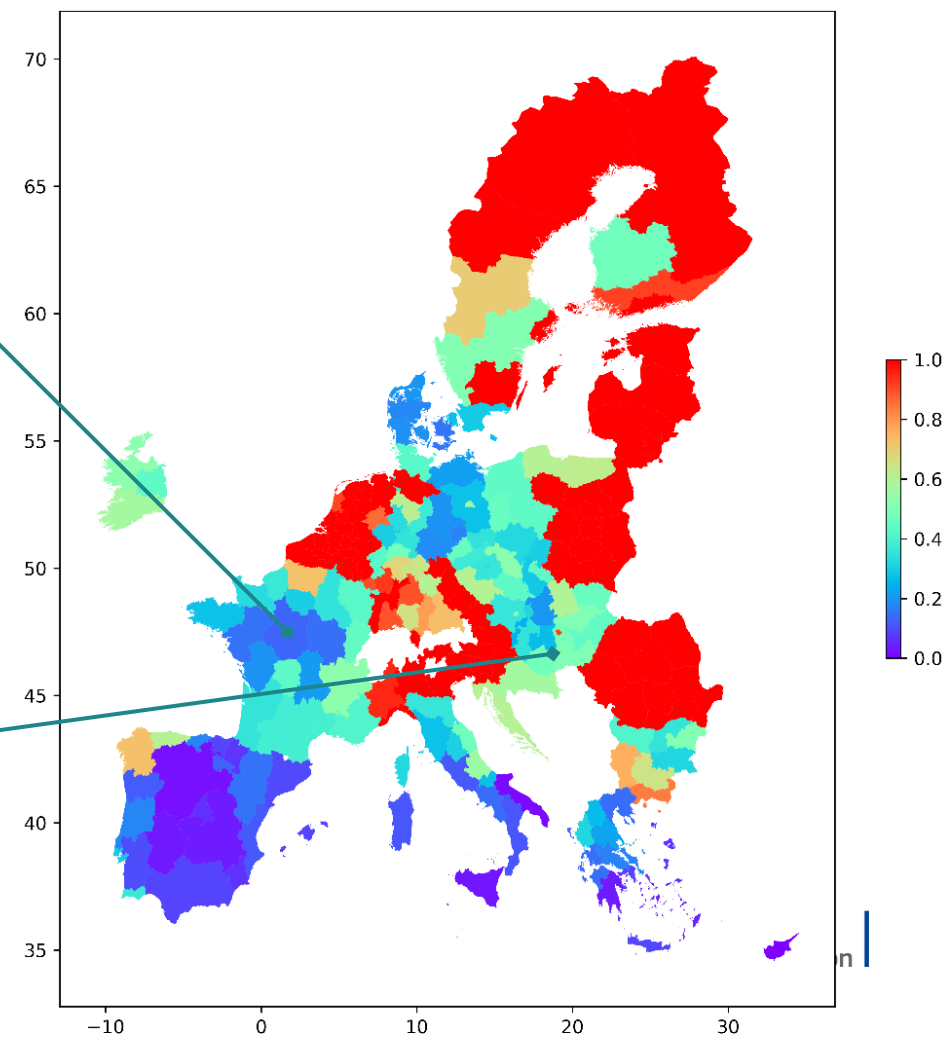
## FR – Centre



## HU – Dél-Alföld



## Coefficient of variation



# Conclusions and way forward

## MODIS time series for yearly winter crop mapping in Europe

- Parametric approach NDVI + T Sum:
  - catches winter crops phenology
  - offers spatial coherence
  - is not consistent in time
- Different parameters values
- Stable pixels (5-years?)
- Consider the green up



# Thank you

[lorenzo.seguini@ec.europa.eu](mailto:lorenzo.seguini@ec.europa.eu)