



The International Charter 'Space and Major Disasters'

Guennadi Kroupnik
Canadian Space Agency

living planet
symposium

BONN
23-27 May
2022

TAKING THE PULSE
OF OUR PLANET FROM SPACE



Canadian Space
Agency

Agence spatiale
canadienne

#SatellitesForEarth

#SatellitesPourLaTerre

Canada

The Charter

An international agreement by Satellite Operators to provide priority access to satellite data in the event of Major Disasters.

Founded by Space Agencies in 1999 following UNISPACE III.

Declared operational November 13, 2000 (Founding Agencies: ESA, CNES, CSA)

- Disaster response
- Multi-satellite - Free Data - Priority & fast access
- Satellite Tasking and Archived data
- Data processing to pre-determined level

Disasters Types

Activated to support relieve in case of major disasters caused by:

Natural events

Earthquakes

Fires

Floods

Ice jams

Landslides

Tsunamis

Ocean storms

Volcanic eruptions

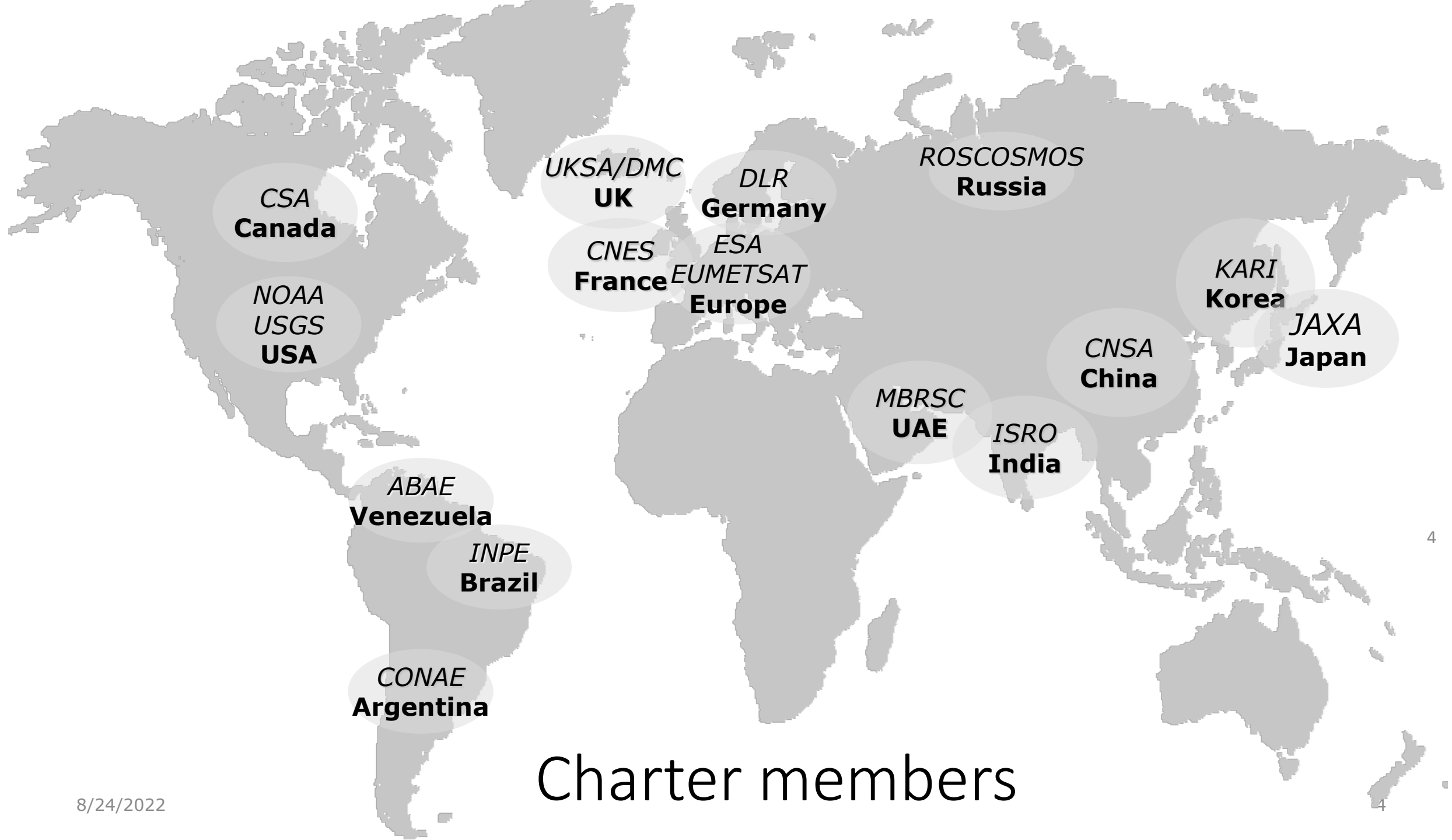


Man-made events

Oil spills

Industrial accidents

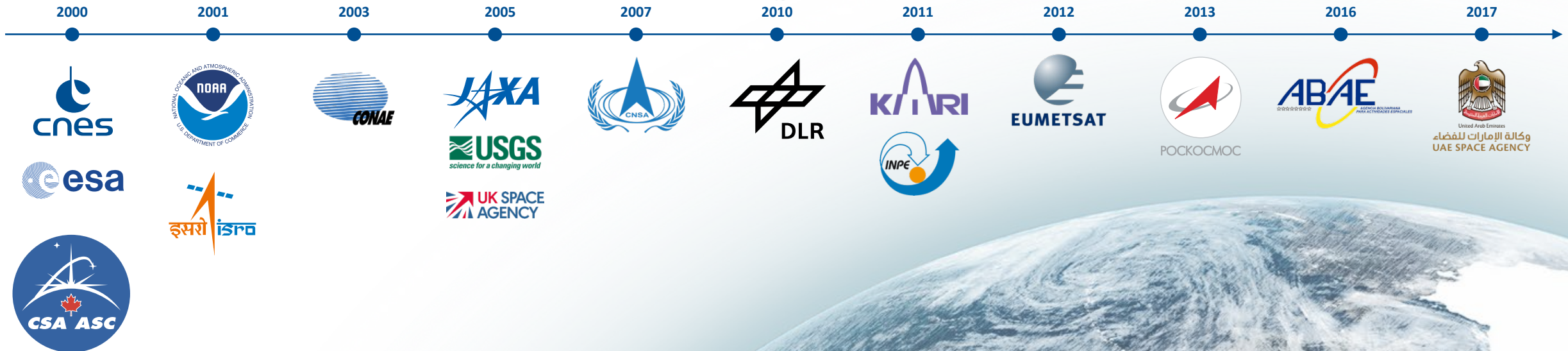




Charter members

Members joining the Charter

CSA IS A FOUNDING MEMBER





Activating the Charter: Authorized Users



TROPICAL CYCLONE
TC20220221MDG

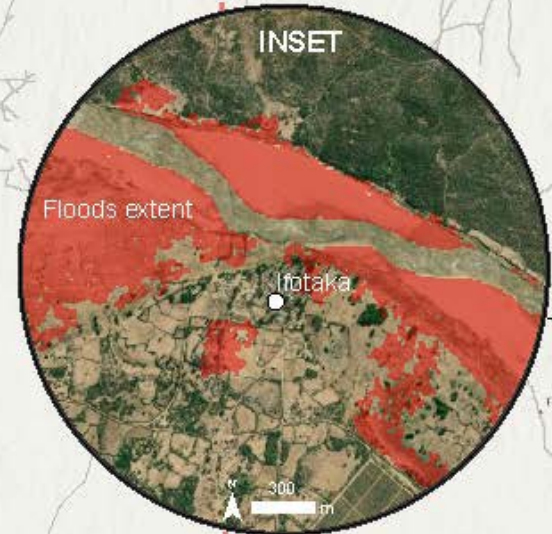
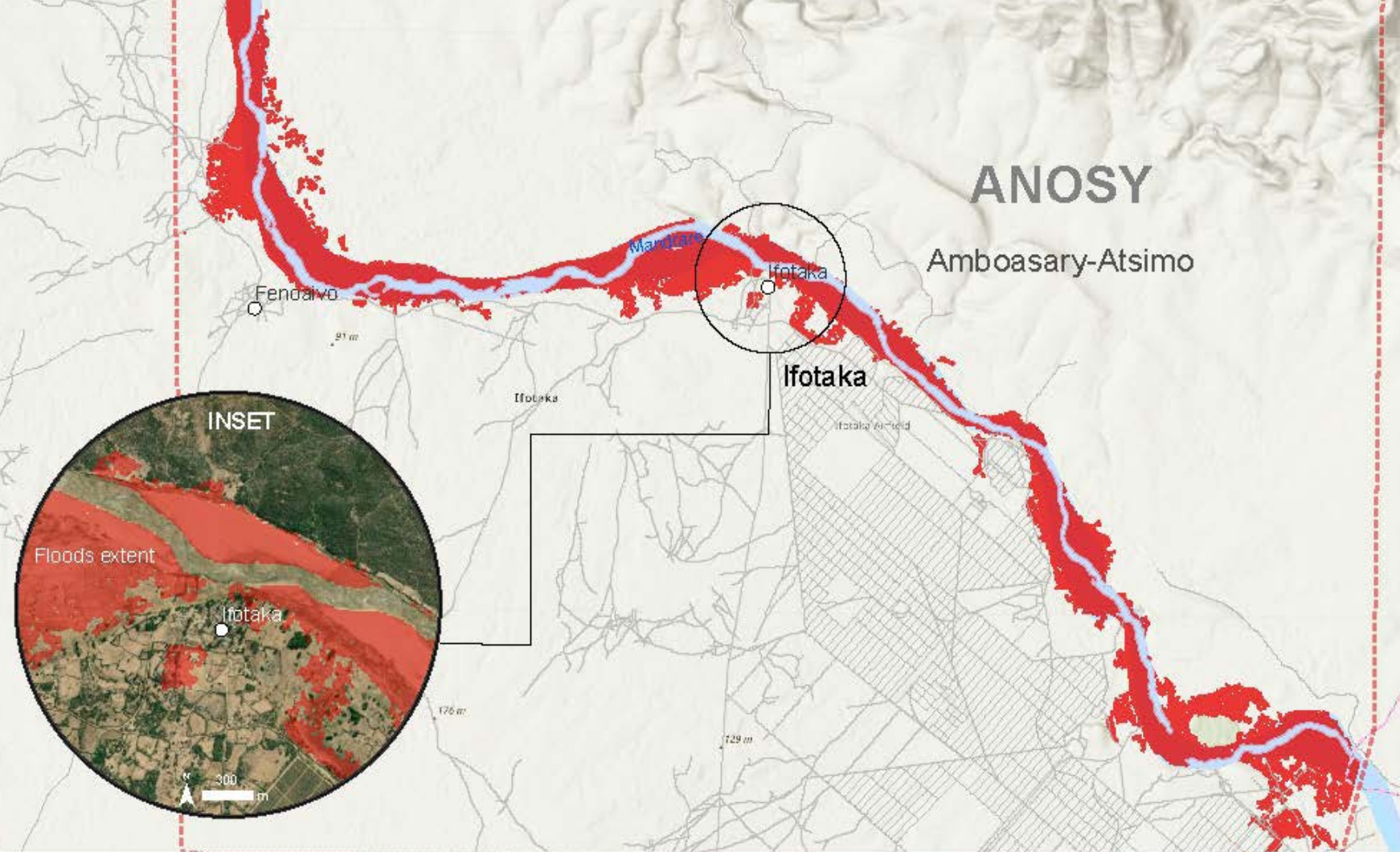


MADAGASCAR

IFOTAKA COMMUNE, AMBOASARY-ATSIMO DISTRICT, ANOSY REGION

IMAGERY ANALYSIS: 28/02/2022 PUBLISHED 01/03/2022 V1.

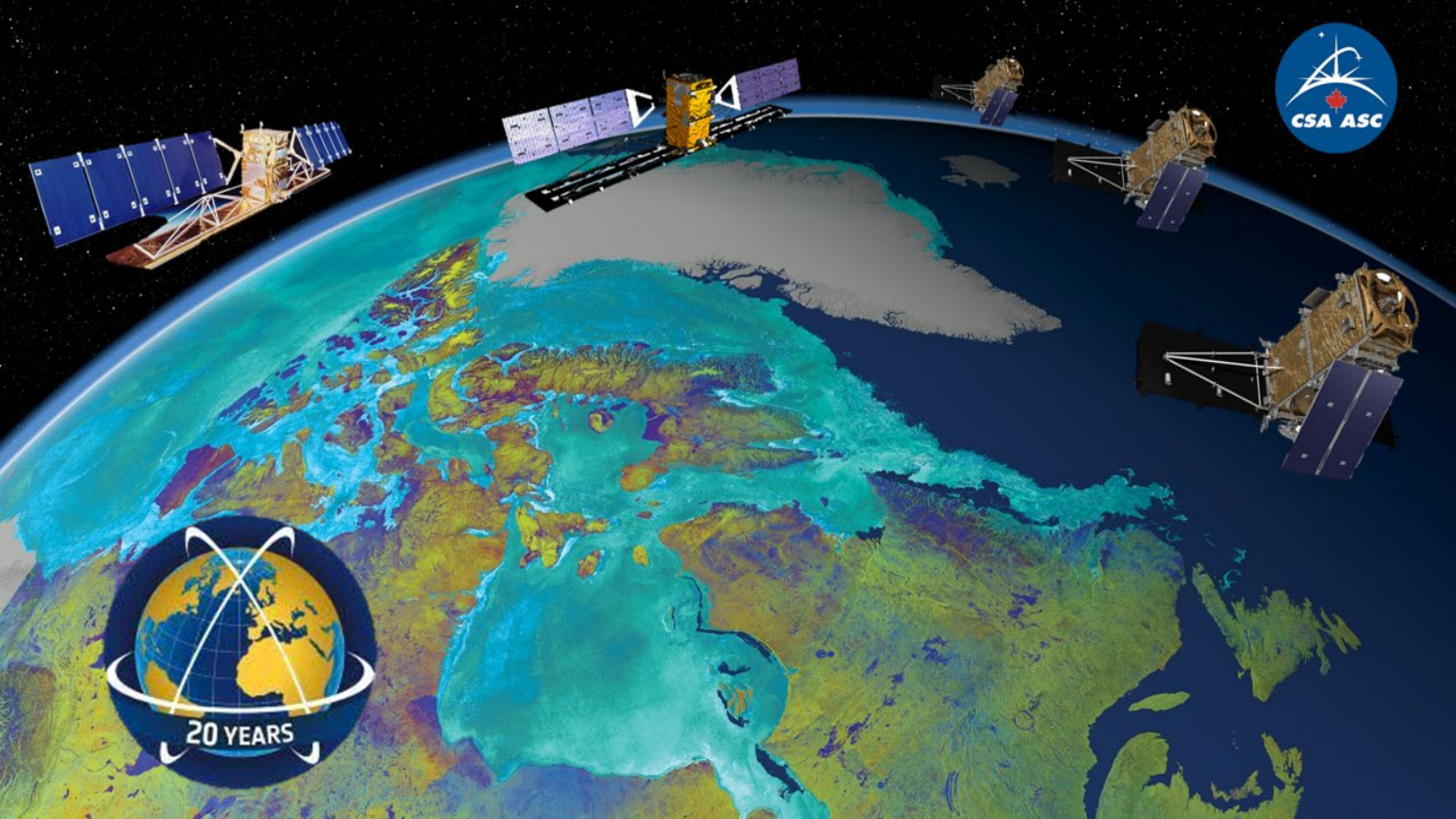
ANALYSED AREA	FLOODS EXTENT	POPULATION POTENTIALLY EXPOSED
330km ²	13km ²	650



Satellite-detected water extents in Ifotaka Commune, Amboasary-Atsimo District, Anosy Region, Madagascar as of 28 February 2022

This map illustrates satellite-detected surface waters in Ifotaka commune, Amboasary-Atsimo district, Anosy region, Madagascar as observed from an RCM-2 image acquired on 28 February 2022 at 05:16 local time. Within the analyzed area of about 330 km², about 13 km² of lands appear to be flooded. Based on Worldpop population data and the detected surface waters, about 650 people are potentially exposed or living close to flooded areas.







Fort McMurray Wildfire 2016

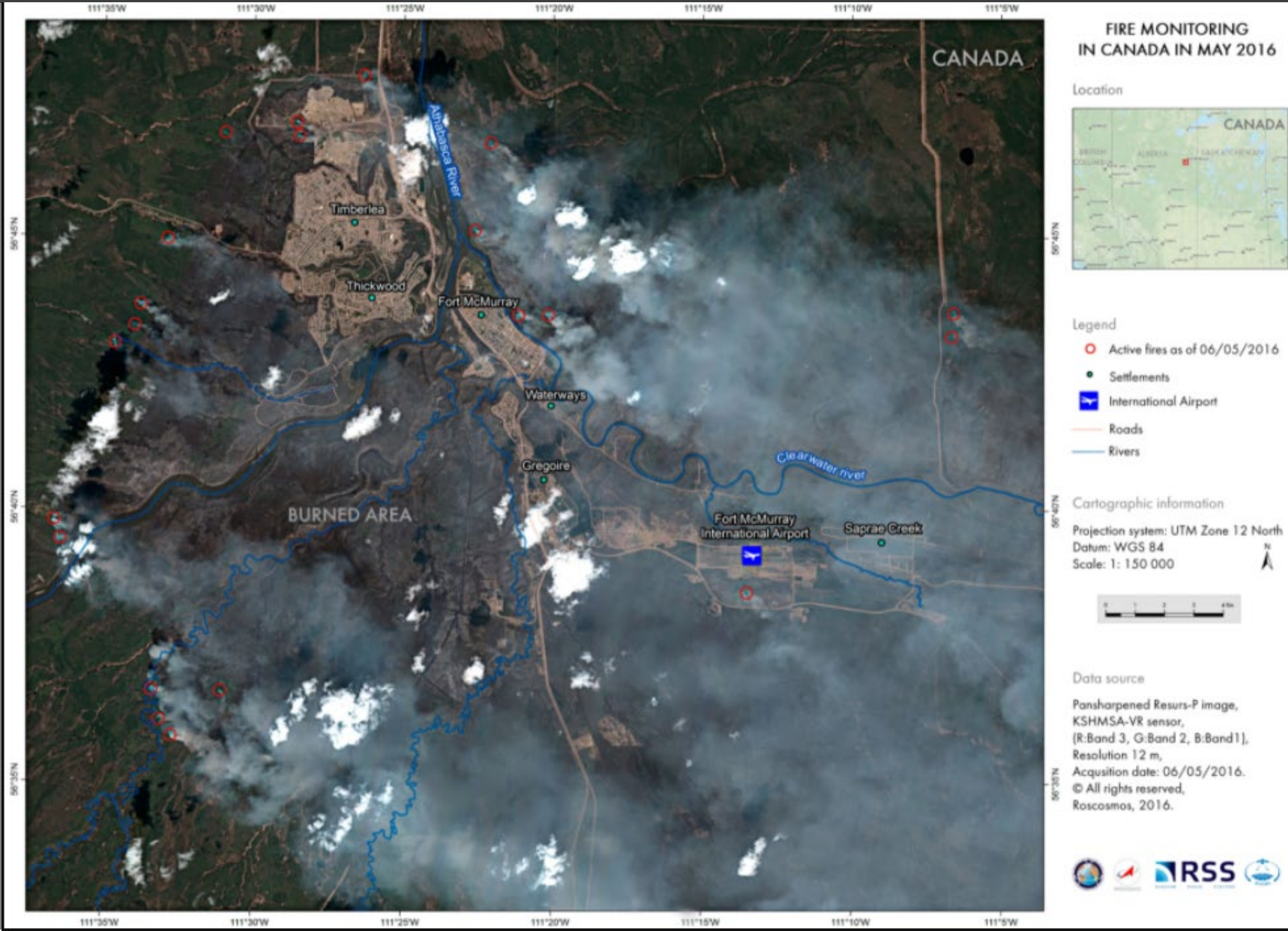
Fire monitoring in Canada

Acquired: 06/05/2016

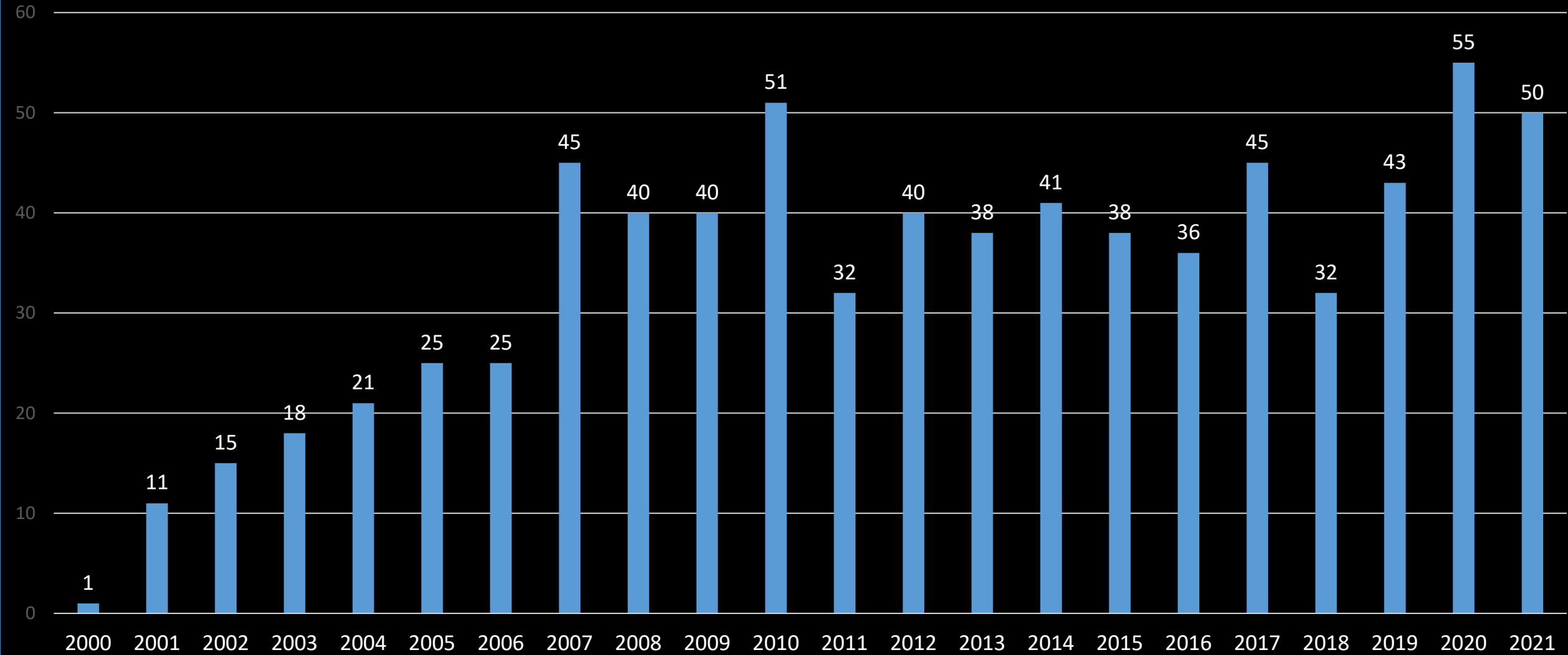
Source: Resurs-P

Copyright: ROSCOSMOS 2016 - All rights reserved

Map produced by ROSCOSMOS



Activations Overview







DISASTERSCHARTER.ORG



