

ESA Living Planet Symposium - Bonn, 23-27 May 2022

Agora: FAO & ESA Partnership  
on the use of Earth Observation for Food and Agriculture

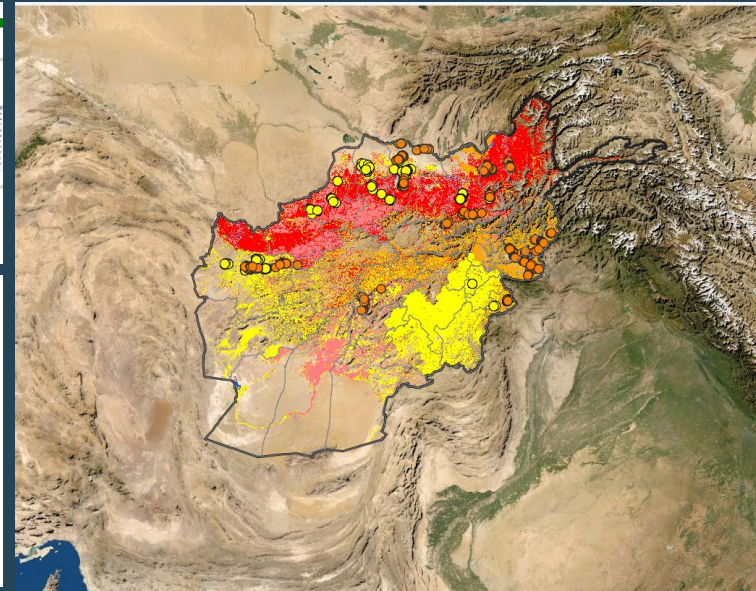
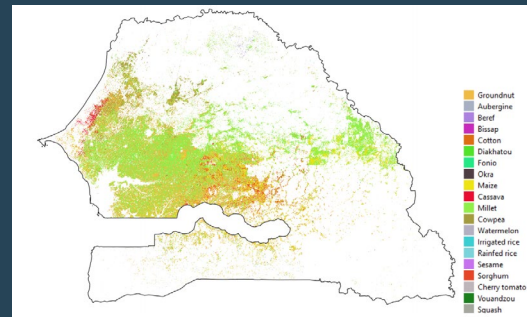
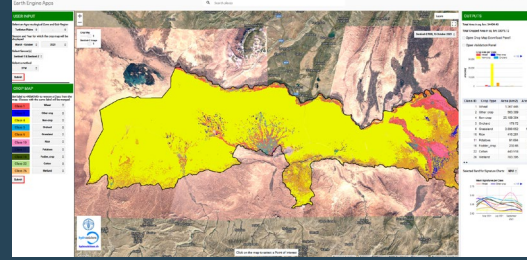
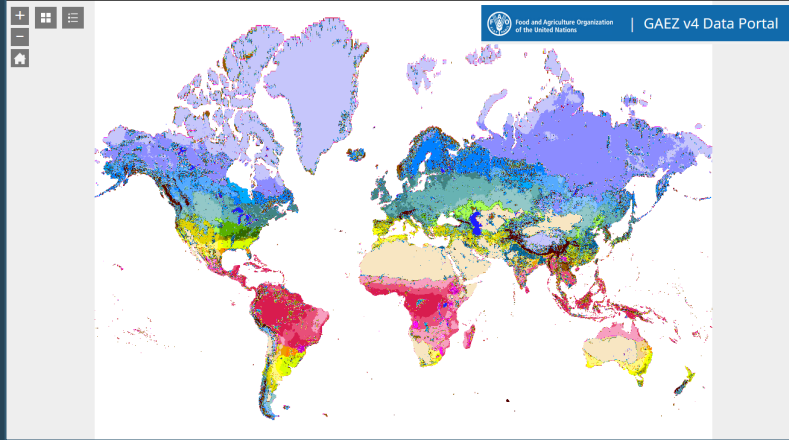
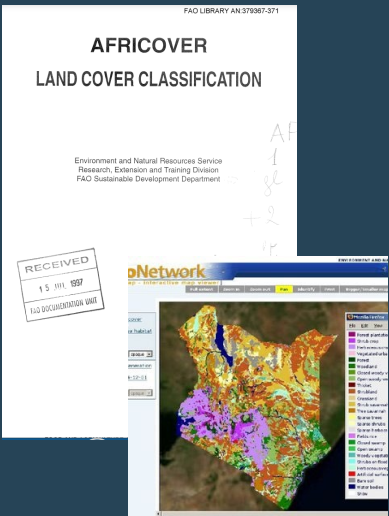


Pietro Gennari  
Chief Statistician, FAO

# AFRICOVER 1997

# GAEZ since 1980

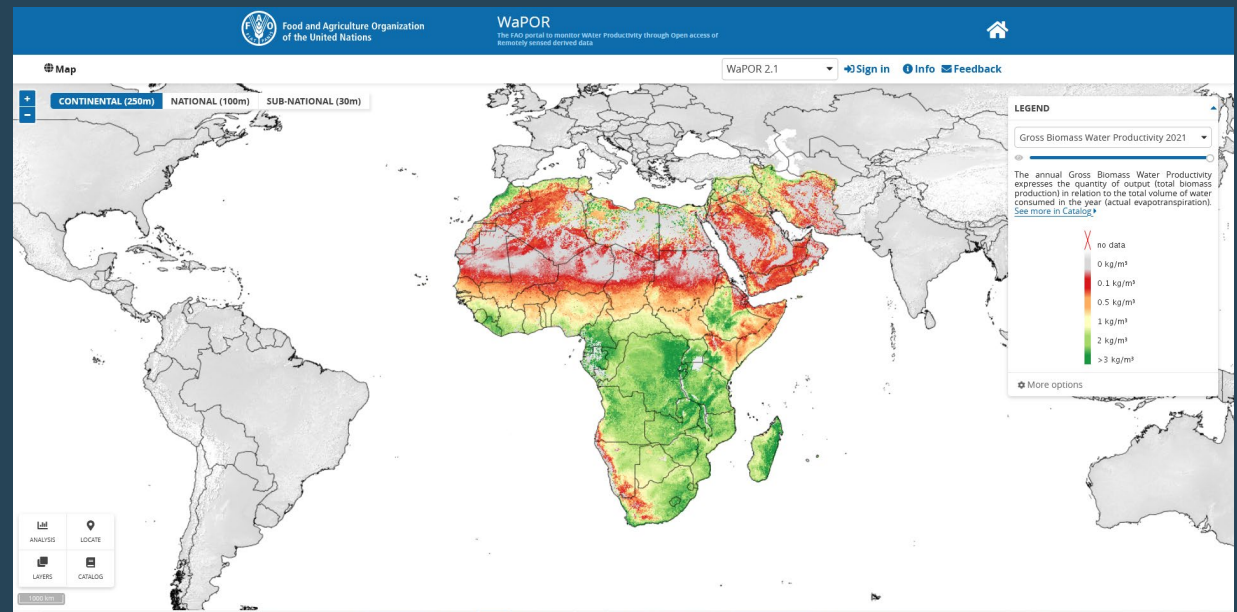
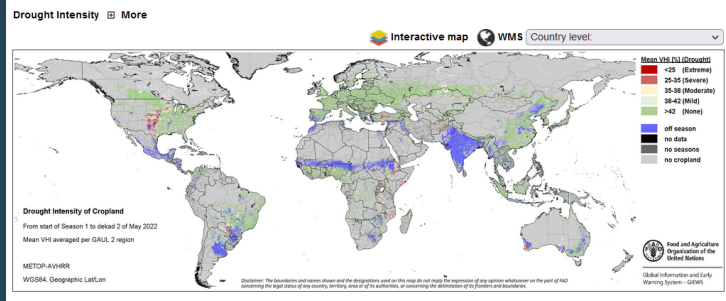
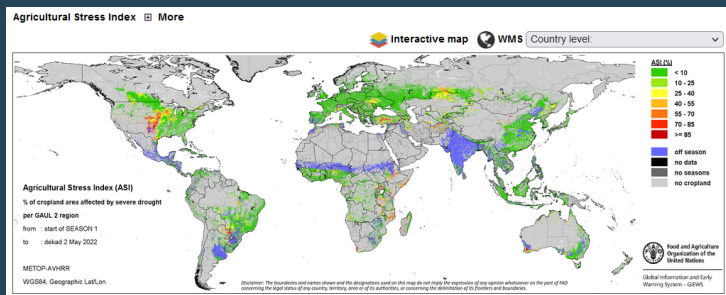
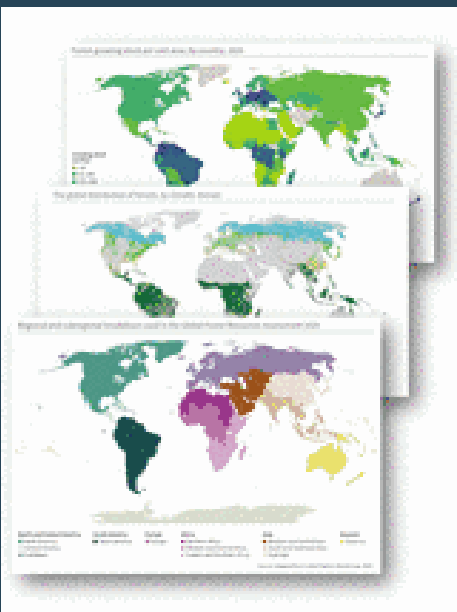
# EOSTAT since 2019



# FRA since 1980

# ASIS since 1995

# WAPOR since 2016





Market Monitor

OVERVIEW WHEAT MAIZE RICE SOYBEAN

last release: May 2022

	From previous month forecast	From previous season
Wheat	▲	▼
Maize	—	▼
Rice	—	▲
Soybeans	—	▼

▲ Easing — Neutral ▼ Tightening

Spring planting in the Northern Hemisphere is underway amid high commodity prices but high input costs as well. Early indications for the United States and the European Union suggest that higher prices for soybeans and other oilseeds will encourage producers to increase oilseed plantings. For wheat, increased acreage in Canada might help fill some of the global deficit in supplies. However, the outlook is less favourable for India and the United States. Due to the tightness in global stocks and the uncertainty caused by the conflict in Ukraine, price volatility is likely to remain high this year as markets will focus on weather, crop conditions of fall-planted wheat and progress for spring planting and development later this summer. Of increasing concern are export restrictions, which further exacerbate price volatility and jeopardize global supplies.

INDICATORS

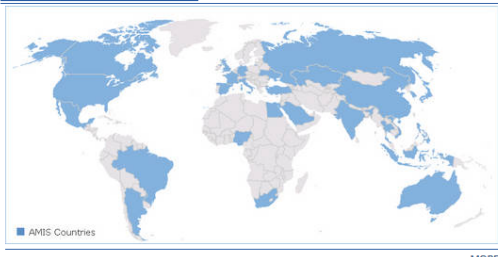
Grains and Oilseeds Index (by year)



EVENTS

- AMIS webinar: Tracking export restrictions and sanctions 13 Apr 2022 Webinar | 14:00-15:00 (CET)
- 11th session of the AMIS Rapid Response Forum 23 Mar 2022 Videoconference
- Extraordinary meeting of the AMIS Rapid Response Forum 05 Mar 2022
- 20th session of the Global Food Market Information Group 19 Nov 2021 Videoconference

COUNTRY DATA



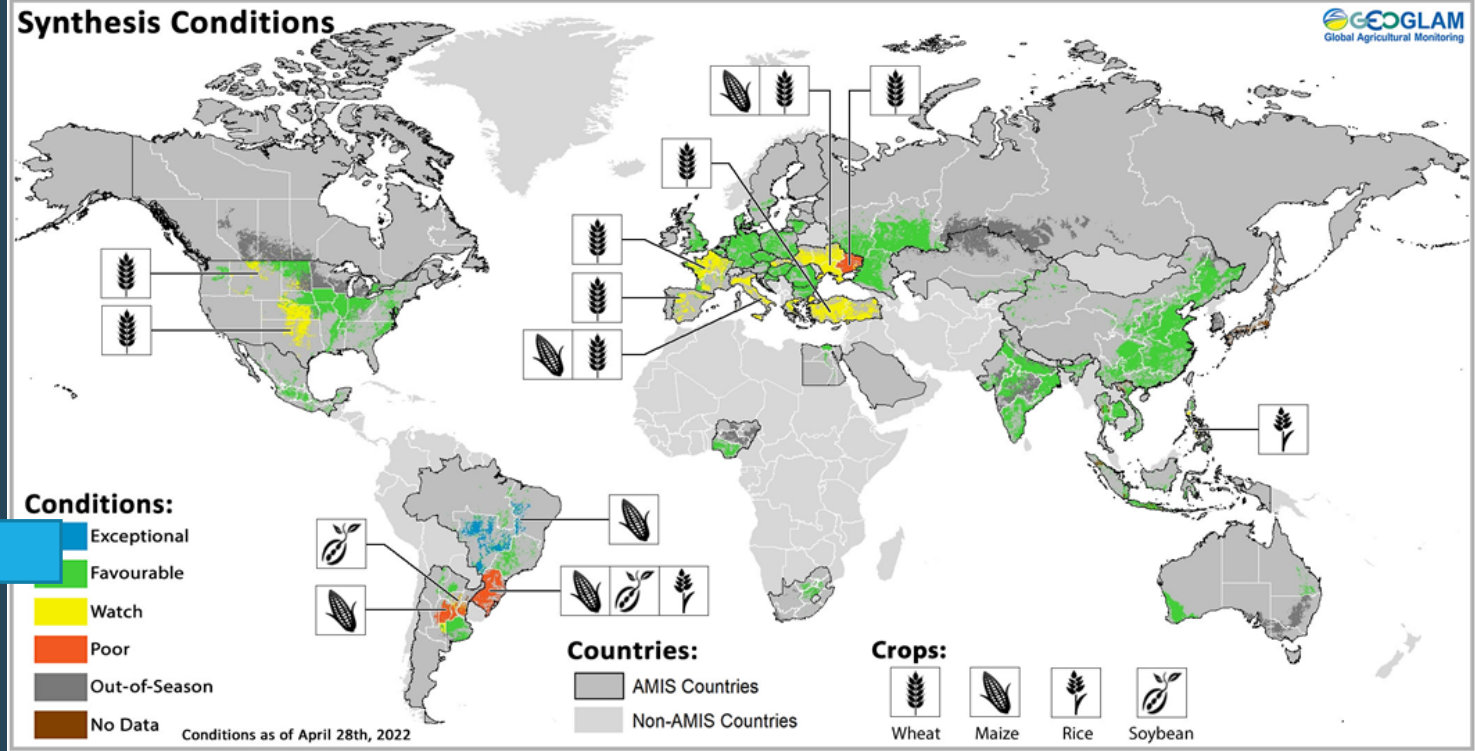
AMIS ON TWITTER

Tweets by @AMISoutlook

AMIS @AMISoutlook Replying to @AMISoutlook (ii) implore countries to refrain from unilateral trade policy actions such as imposing export restrictions (iii) call for humanitarian aid to protect the most vulnerable (3/3)

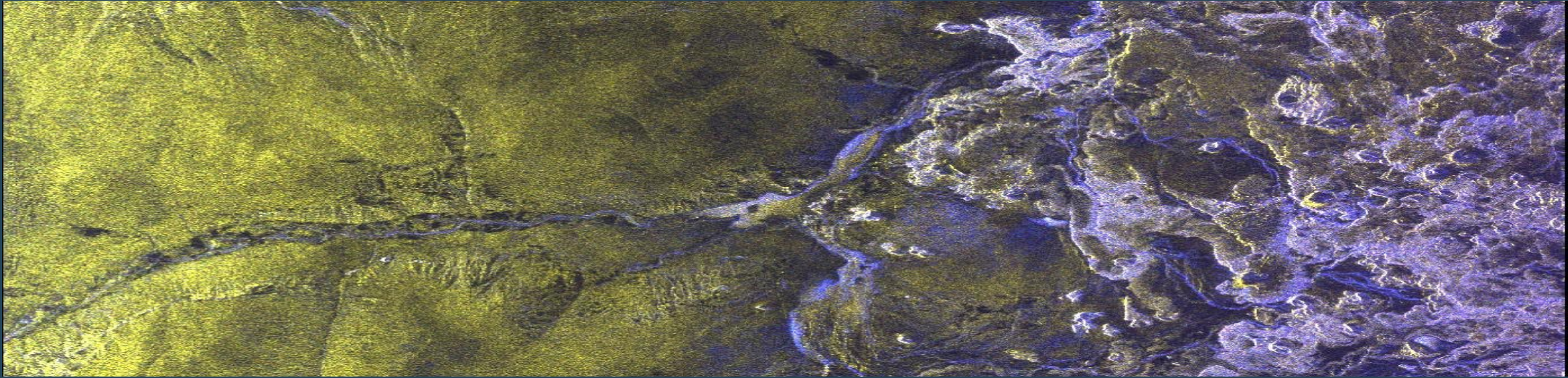
May 20, 2022

GEOSPATIAL EXPLICIT INPUTS (source GEOGLAM)



The crop condition map, kindly provided by the GEO Global Agricultural Monitoring initiative (GEOGLAM), synthesizes information for all four AMIS crops in major growing areas. Assessments are based on a combination of national and regional crop analyst inputs along with earth observation data. Crops that are in other than favourable conditions are displayed on the map with their crop symbol.

# UN Committee of Experts on Big Data and Data Science for Official Statistics



Co-Chairs of the Task Team on Earth Observations for Agricultural Statistics





# FAO - ESA MoU



## Main Areas of collaboration

- Land Cover Statistics
- Agricultural statistics
- Forestry statistics
- Agricultural water productivity
- Agricultural Stress Index
- SDG Indicators

