

# living planet symposium | BONN

23-27 May  
2022

TAKING THE PULSE  
OF OUR PLANET FROM SPACE

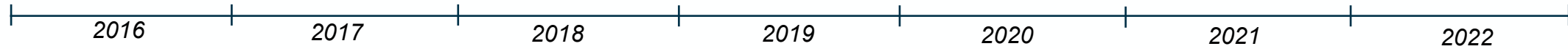


# SENTINELS DEVELOPMENT STATUS

Guido Levrini,  
ESA Copernicus Space Segment Programme Manager

24 May 2022

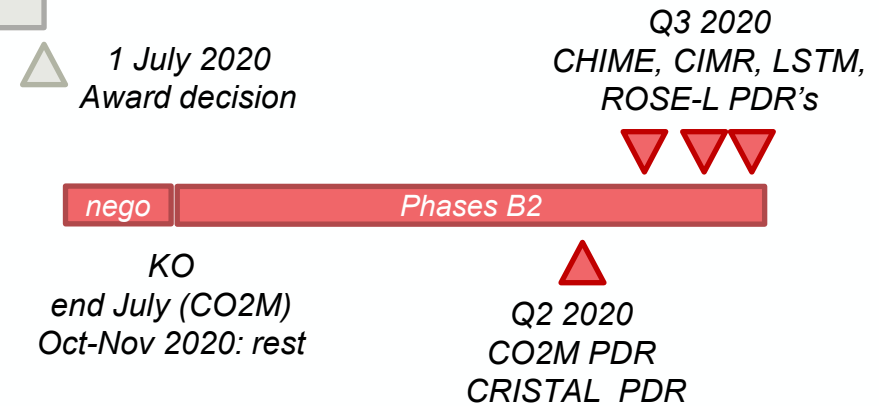
# Sentinels Expansion Development Timeline (2016-2022)



## Users' Requirements (by COM)



## Sentinels Expansion Implementation Phase (Phases B2/C/D/E1)



# A Moment of Collective Reflection: Too Big a Step?

Sentinels Expansion address key policy priorities of the EU

⇒ major challenges for mankind:

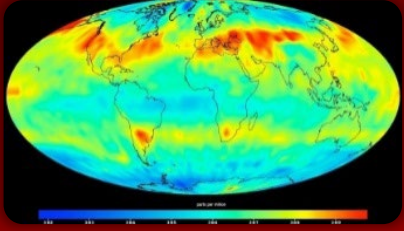
- Food Security
- Water Management
- Arctic Monitoring
- Land Management
- Climate
- etc .....

## Copernicus Sentinels Next Generation



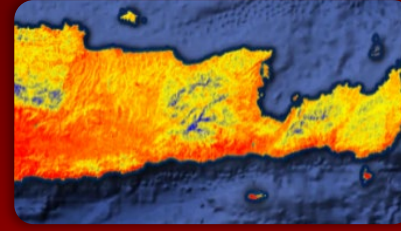
# What Is the Right Level of Risk?

## Anthropogenic CO<sub>2</sub> Monitoring Mission



Causes of  
Climate Change

## Land Surface Temperature Mission



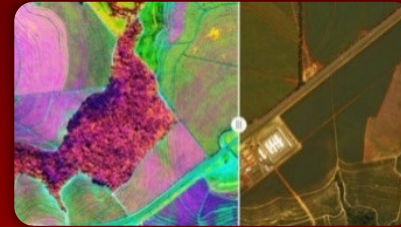
Agriculture & Water  
Productivity

## CRISTAL – Polar Ice & Snow Topography



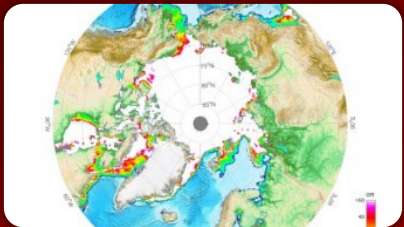
Effects of  
Climate Change

## CHIME – Hyperspectral Imaging Mission



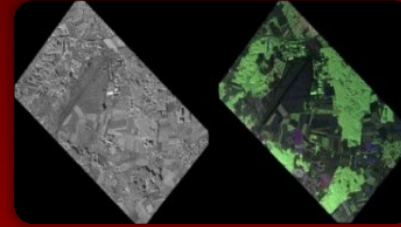
Food Security, Soil,  
Minerals, Biodiversity

## CIMR – Passive Microwave Radiometer



Sea: Surface Temp.  
& Ice Concentration

## L-band SAR Mission



Vegetation & Ground  
Motion & Moisture

# What Is the Right Level of Risk?



*“ If you don’t risk anything, you risk even more ”*

( Erica Jong )