

EU Grassland Watch

An Operational Service for Monitoring Grassland Dominated
Natura2000 Sites with Copernicus Data

Geoff Smith, Stefan Kleeschulte, Tomas Soukup, Raul Garcia,
Gebhard Banko, Bruno Combal

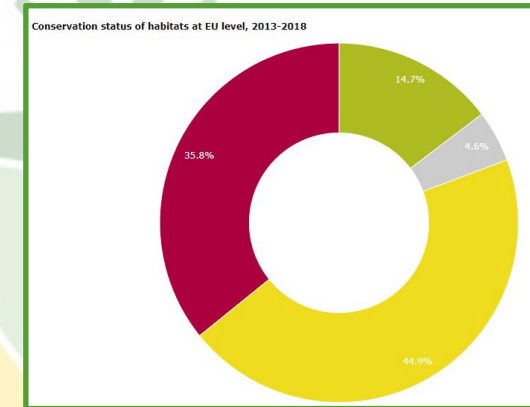
Definition of the problem

➤ Issues with Natura 2000:

- Less improvement than expected.
- Resources for regularly monitoring often limited.
- Important datasets are lacking or of insufficient quality.
- Information about the condition of individual Natura 2000 sites is often weak or missing.

➤ Need:

- Information about the effectiveness of Natura 2000 sites in protecting their species and habitats
- Grasslands are important as they are extremely vulnerable.
- Site or even patch-based information required.
- Close integration with the Copernicus Land Monitoring Service and the data supplied by the Sentinels
- Develop a service to support site, national and European requirements.



Land cover land use classifications (1994 -)

➤ Earth Observation inputs:

- Landsat
- Sentinel-1 & Sentinel-2

➤ Spatial reference: CLMS N2K local / hotspot product

➤ Thematic reference: CLMS N2K local and CORINE Land Cover products

➤ Classification approach:

- Quarterly / monthly composites
- Support Vector Machine, separate optical and SAR workflows
- Combined result, MAES-based nomenclature

➤ Additional properties

- Grassland biophysics
- Phenology and management
- Indicators



EU Grassland Watch **Beta**

EU GRASSLAND
WATCH

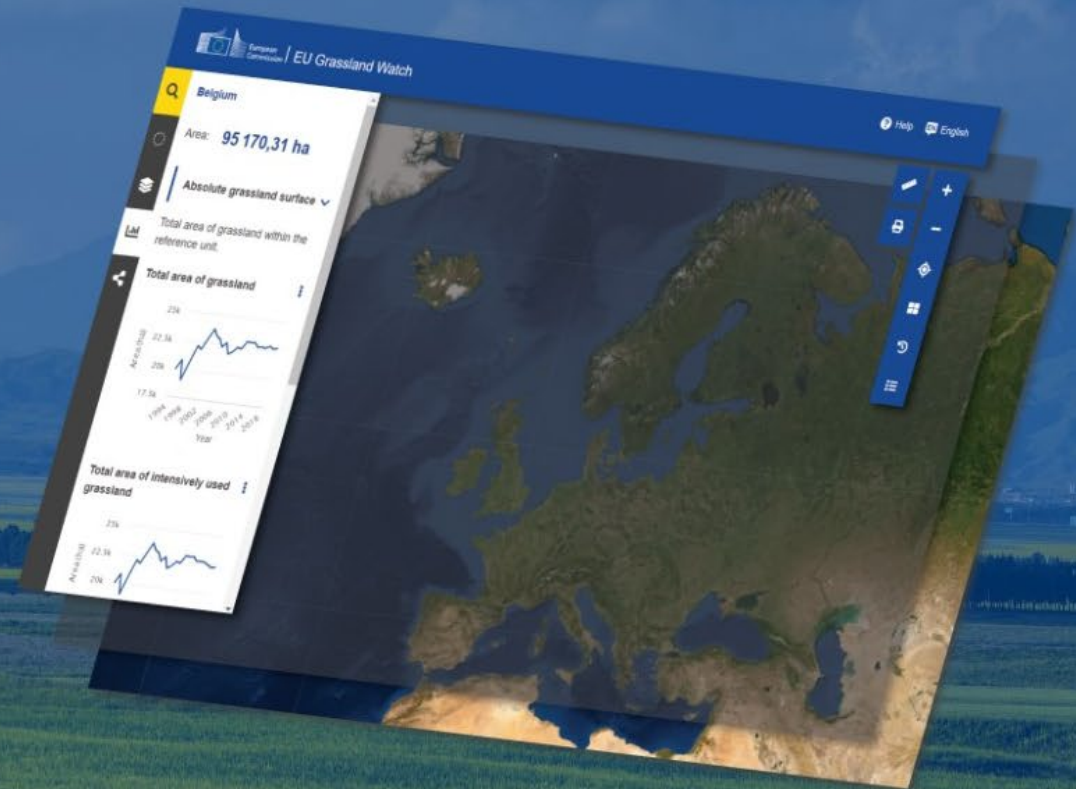
Understand to **protect**

Exploring the evolution of grasslands in Natura 2000 sites

Based on satellite data, EU Grassland Watch provides grassland information in 3 689 Natura 2000 sites in 27 EU Member States. Covering the period from 1994 until the present, the information in this portal exploits Landsat and, since 2016 Copernicus Sentinel 1 and 2, images. Users can explore grassland cover changes at land parcel, Natura 2000 site or regional levels.

At present, the portal covers Natura 2000 sites that were previously mapped in the frame of the Copernicus Land Monitoring Service.

The development of this portal was a pilot project financed by the European Parliament. Further updates and improvements of the contents of this portal, including an increase in the number of Natura 2000 sites to be covered, will take place in the near future.



[START EXPLORING](#)





550 000

images used so far

Each year EU Grassland Watch has collected and analysed up to 100 000 images to generate land monitoring information. Between 1994 and 2018 a total image area of 6.65 billion km² were used, which would cover the Earth 13 times as a single layer.

Note: Situation as of 2018



273 124 km²

of Natura 2000 sites mapped

Each year EU Grassland Watch provides information on land cover / land cover changes for 3 689 Natura 2000 sites, selected for their high conservation value of species-rich grasslands. These sites cover almost 25 % of the total land area of the Natura 2000 network.



35 503 km²

of grassland mapped within sites

The total area of grasslands in the EU-27 is approximately 736 000 km². EU Grassland Watch is mapping only 5 % of these grasslands within the selected Natura 2000 sites but they are likely to be the most important species-rich high biodiversity examples.

About

What is a Natura 2000 site?



Why are grasslands so important?



How are space observations used?





Search for a place (country, region, Natura 2000 site...)

Grassland surface extent

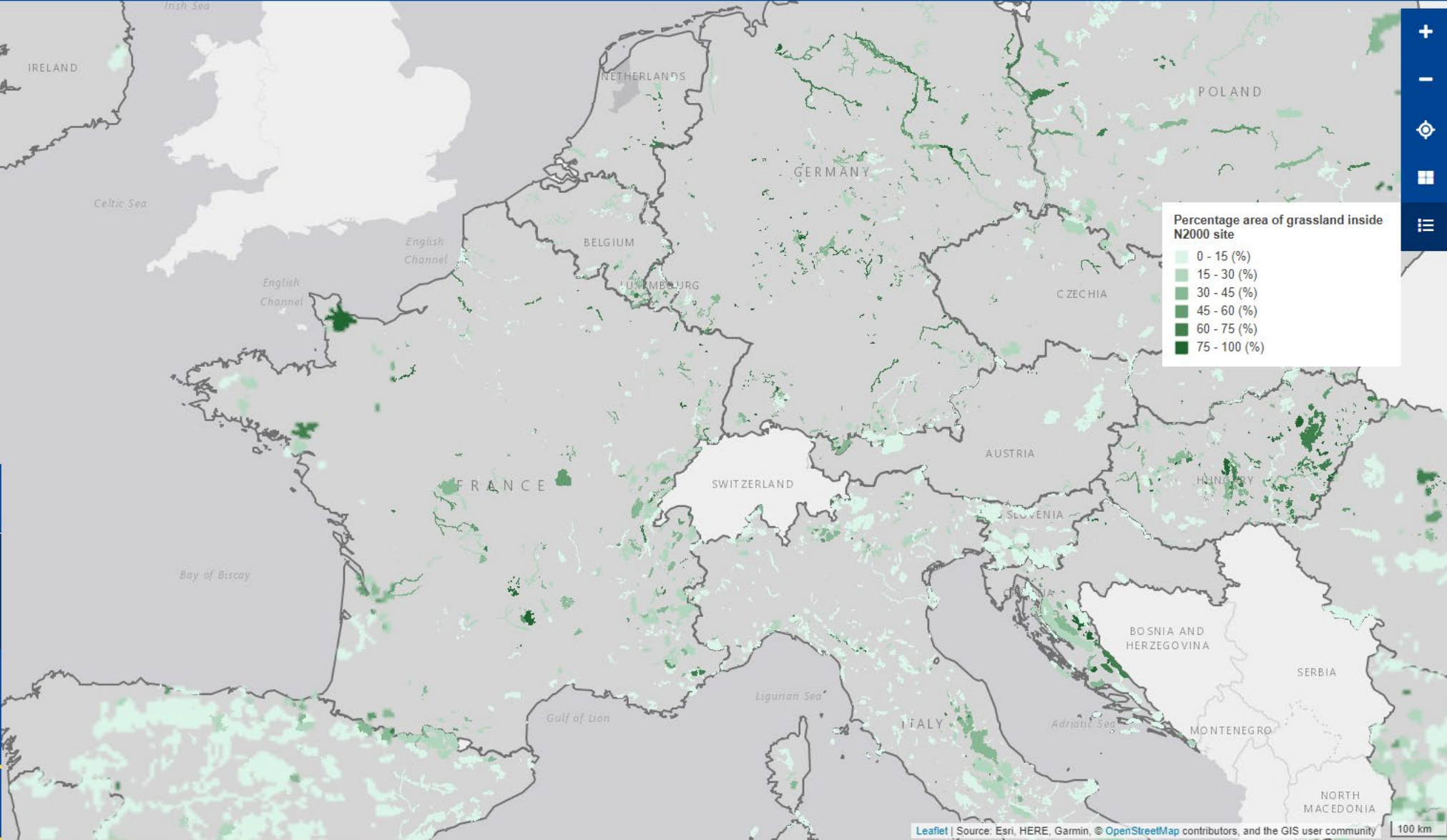
Percentage area of grassland inside N2000 site

This indicator shows the percentage area of all the patches classified as MAES "4xxxx" inside the N2000 site.

Total area of grassland inside N2000 site (ha)

This indicator shows the total area of patches classified as MAES "4xxxx" inside the N2000 site.

Grassland cover change



















Find places

Search for a place (country, region, Natura 2000 site...)

Search

List of places

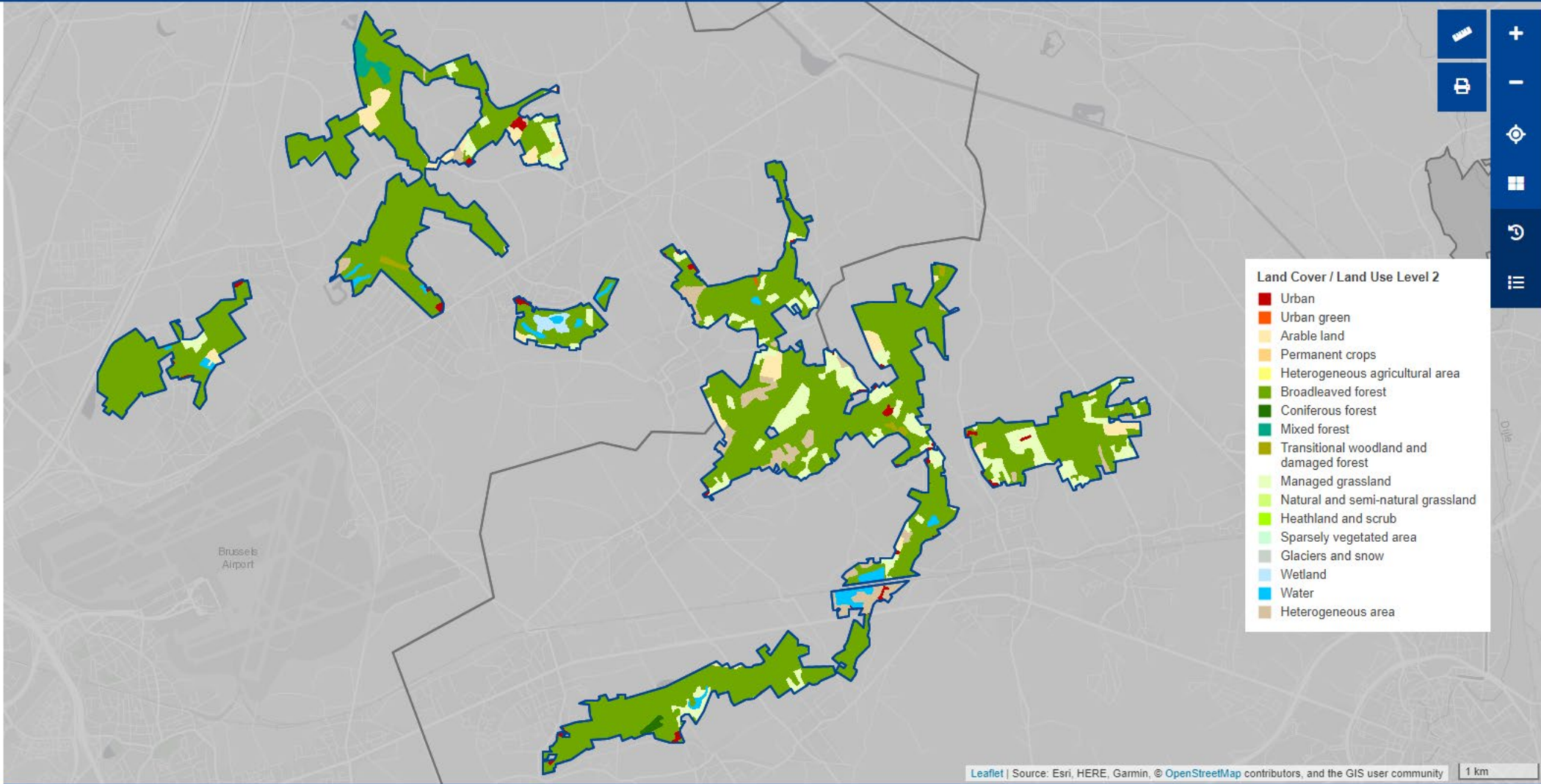
 Cyprus	Arr. Ath	
 Czechia	Arr. Bastogne	Valleien van de Winge en de Motte met valleihellingen.
 Denmark	Arr. Brugge	Valleigebied tussen Melsbroek, Kampenhout, Kortenberg en Veltem.
 Estonia	Arr. Charleroi	
 Finland	Arr. Dendermonde	
 France	Arr. Diksmuide	
 Germany	Arr. Dinant	
 Greece	Arr. Eeklo	
 Hungary	Arr. Gent	
 Ireland	Arr. Halle-Vilvoorde	
 Italy	Arr. Hasselt	
 Latvia	Arr. Huy	
 Lithuania	Arr. Ieper	
 Luxembourg	Arr. Kortrijk	
 Malta	Arr. Leuven	
 Netherlands	Arr. Liège	

Belgium > Arr. Leuven > Valleigebied tussen Melsbroek, Kampenhout, Kortenberg en Veltem. (BE2400010)

Area: 1 445,12 ha

- Land Cover / Land Use
- Level 1
 - Level 2
 - Level 3
 - Level 4

Added value products >



- Land Cover / Land Use Level 2
- Urban
 - Urban green
 - Arable land
 - Permanent crops
 - Heterogeneous agricultural area
 - Broadleaved forest
 - Coniferous forest
 - Mixed forest
 - Transitional woodland and damaged forest
 - Managed grassland
 - Natural and semi-natural grassland
 - Heathland and scrub
 - Sparsely vegetated area
 - Glaciers and snow
 - Wetland
 - Water
 - Heterogeneous area

Leaflet | Source: Esri, HERE, Garmin, © OpenStreetMap contributors, and the GIS user community 1 km



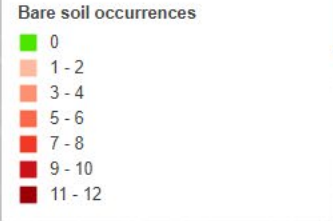
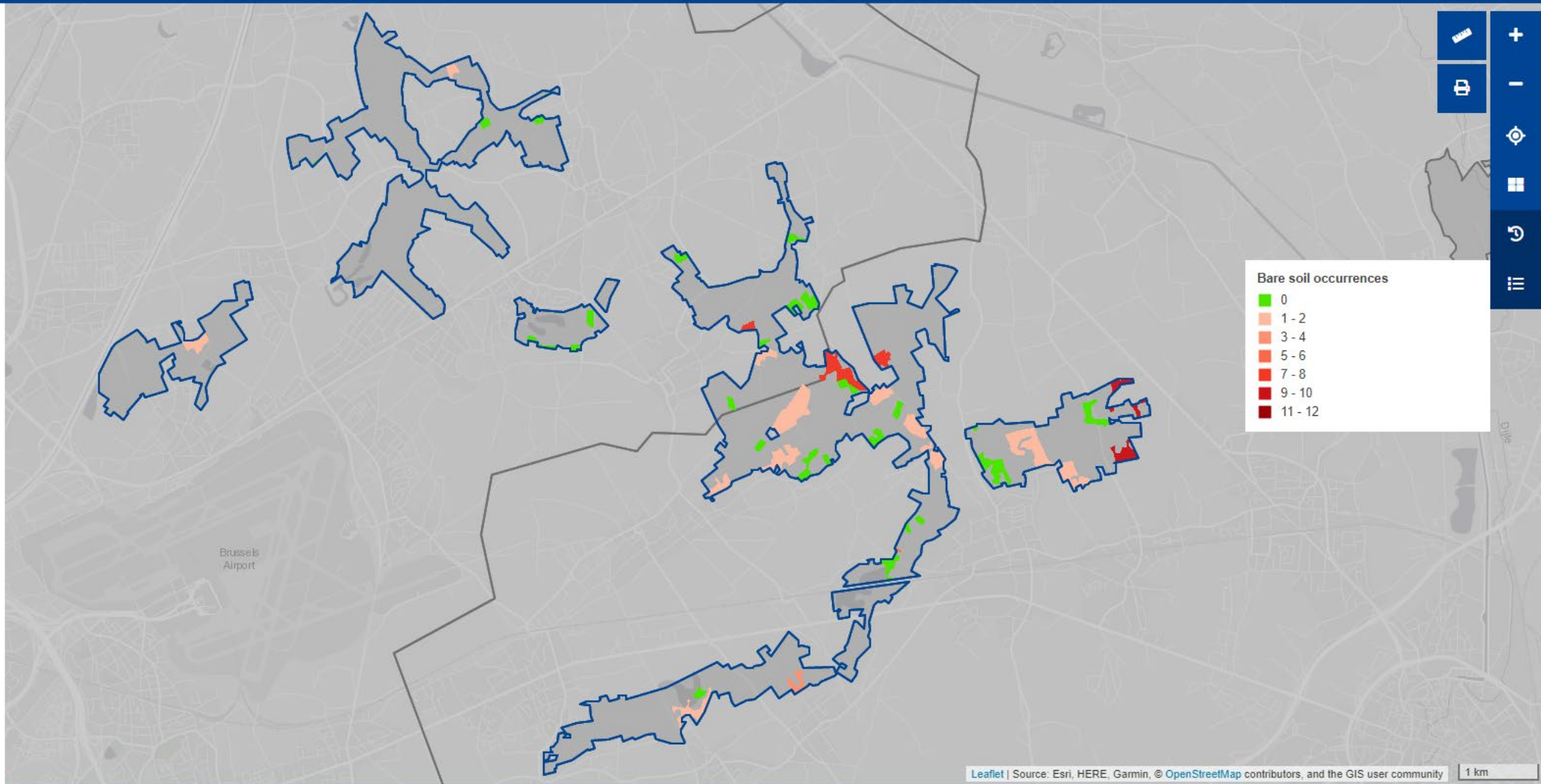
Belgium > Arr. Leuven >
Valleigebied tussen Melsbroek,
Kampenhout, Kortenberg en
Veltem. (BE2400010)

Area: **1 445,12 ha**

Land Cover / Land Use

Added value products

- Grassland biophysics
- Grassland phenology and productivity
- Grassland mowing
- Bare soil occurrence



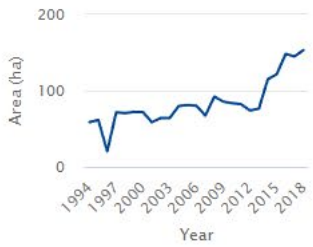
Belgium > Arr. Leuven >
Valleigebied tussen Melsbroek,
Kampenhout, Kortenberg en
Veltem. (BE2400010)

Area: **1 445,12 ha**

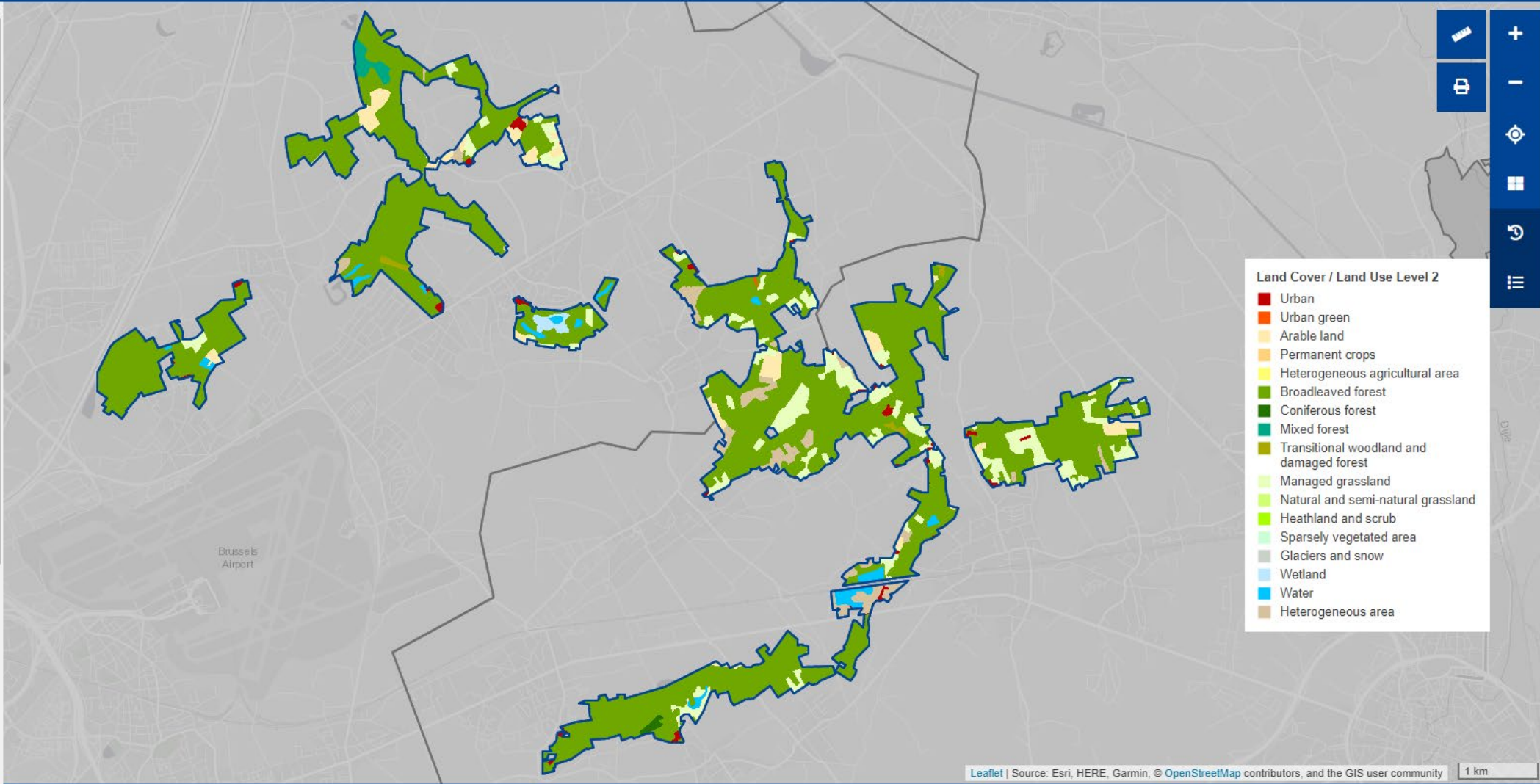
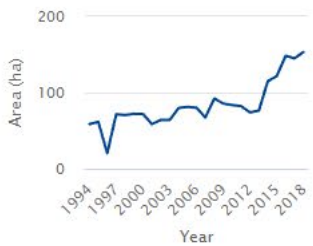
Absolute grassland surface

Total area of grassland within the
reference unit.

Total area of grassland



Total area of intensively used
grassland



- Land Cover / Land Use Level 2
- Urban
 - Urban green
 - Arable land
 - Permanent crops
 - Heterogeneous agricultural area
 - Broadleaved forest
 - Coniferous forest
 - Mixed forest
 - Transitional woodland and damaged forest
 - Managed grassland
 - Natural and semi-natural grassland
 - Heathland and scrub
 - Sparsely vegetated area
 - Glaciers and snow
 - Wetland
 - Water
 - Heterogeneous area



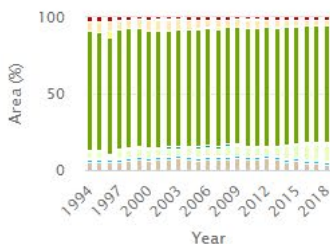
Belgium > Arr. Leuven > Valleigebied tussen Melsbroek, Kampenhout, Kortenberg en Veltem. (BE2400010)

Area: 1 445,12 ha

- Absolute grassland surface >
- Relative grassland surface >
- Grassland cover changes >
- Class diversity >

Diversity of land use/land cover classes within the reference unit

Proportion of land cover categories



Proportion of land cover categories

The indicator 'Proportion of land cover categories' gives the percentage of each existing Land Cover/Land Use class within the N2K site for each reference (i.e., Land Cover/Land Use map production) year. The indicator is calculated as the sum of all the areas of the objects with the same MAES code divided by the total area of the N2K site and gives an overview of the land cover/land use class distribution within the site.

Choose export format

PNG

Export

Chart Table



Belgium > Arr. Leuven > Valleigebied tussen Melsbroek, Kampenhout, Kortenberg en Veltem. (BE2400010)

Copy and paste this link

https://bm-eugis.tk/cop4n2k_app/

Copy

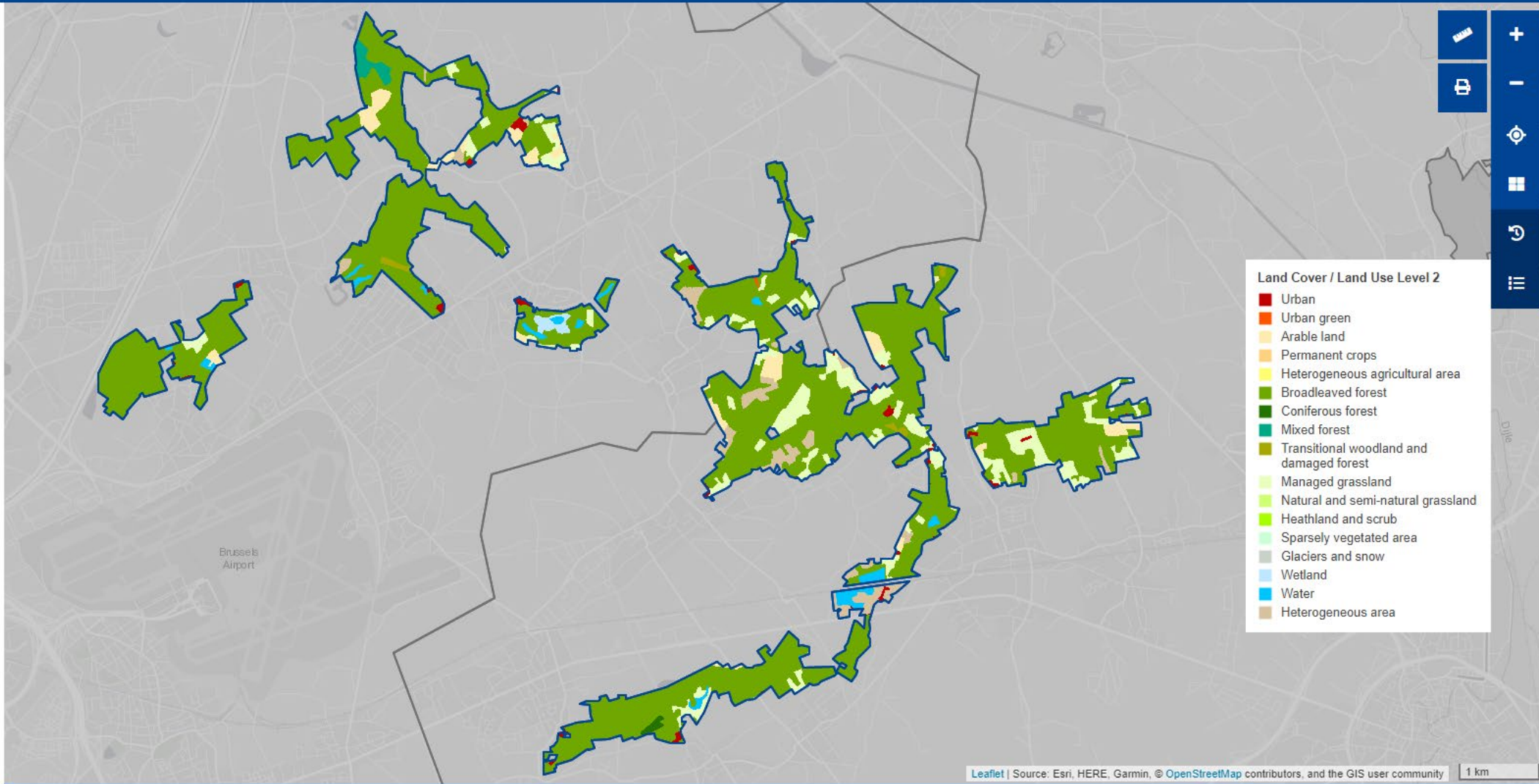
Share this page

Facebook

Twitter

LinkedIn

E-mail



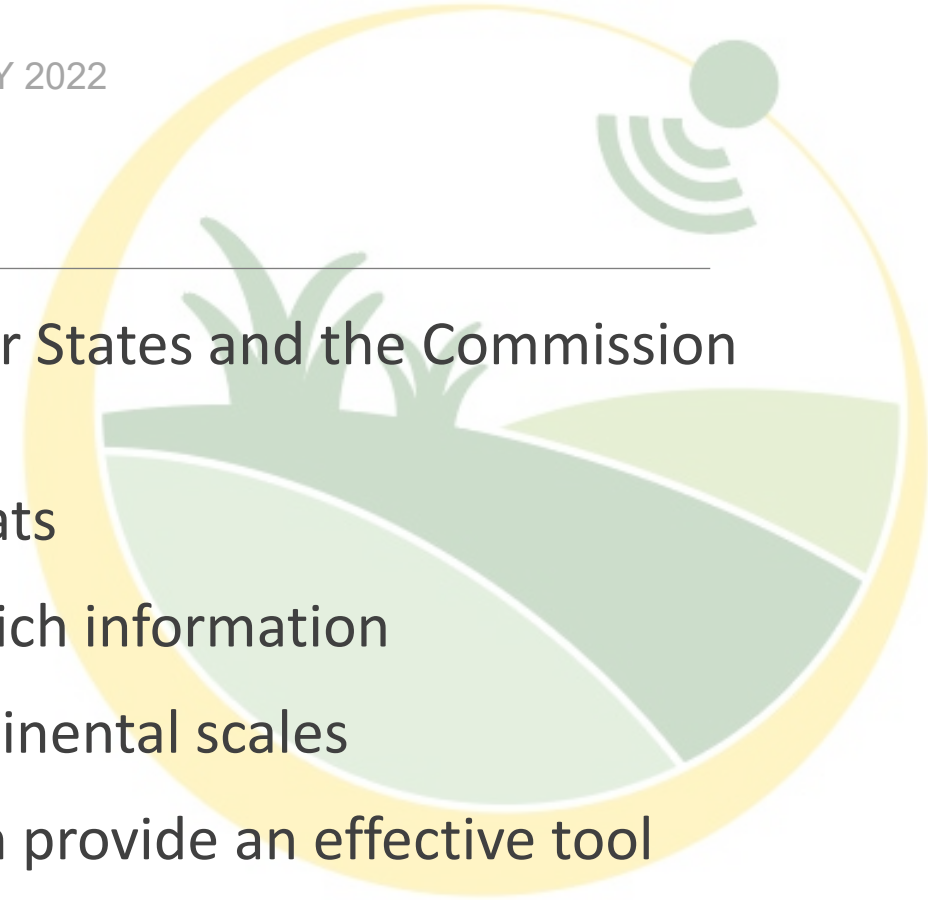
Leaflet | Source: Esri, HERE, Garmin, © OpenStreetMap contributors, and the GIS user community

1 km



Conclusions

- EU Grassland Watch service will support EU Member States and the Commission to proactively manage the Natura 2000 network
- Help prevent the deterioration of species and habitats
- Present spatially and temporally detailed attribute rich information
- Provide environmental management at local to continental scales
- Demonstrate how frequent spatially detailed EO can provide an effective tool
- Show how downstream services can be built on the free and open data policy of Copernicus
- **EU Grassland Watch now live as Beta / Prototype**



Thank you for attention

<https://ec.europa.eu/eu-grassland-watch/>

Twitter: @cop4n2k

www.cop4n2k.eu

