

Delivery Note

Product Info

Product File Name	CSKS3_DGM_B_WR_06_HH_RD_SF_20170506164714_20170506164730.h5
Product Identifier	3930309
Mission Identifier	CSK
Unique Identifier	100.2524177.1765508
Product Generation Date	2023-07-30 21:06:55.559144000
Delivery Request Id	2524177
Service Request Id	2524177

Product Definition Data

Product Type	DGM_B
Scene sensing start utc	2017-05-06 16:47:14.464142367
Scene sensing stop utc	2017-05-06 16:47:29.863861605
Bottom Left	52.80818572 13.66021343 2.28344561e-07
Bottom Right	52.91396279 11.95841841 1.618968781e-07
Top Left	53.76631405 13.84474849 1.209627953e-10
Top Right	53.87040054 12.10382402 - 6.575646694e-10
Scene Centre	53.34284243 12.89272917 - 3.733475751e-10
Satellite Id	CSKS3
Acquisition Mode	WIDEREGION
Look Side	RIGHT
Near Look Angle	47.90760059
Far Look Angle	51.33576961
Projection Id	GROUND RANGE/AZIMUTH
Delivery Mode	STANDARD
Acquisition Station Id	1100/ICACQ/Matera

Processing Info

Processing Level	Level-1B
------------------	----------

Ancillary Data Reference

Ground Projection Reference Surface	ELLIPSOID
Ellipsoid Designator	WGS84
POD Product Category	FILTERED
Attitude Product Category	RESTITUTED

Algorithms

SPF Software Version	0.0
L1B Software Version	4.0.12
L1A Software Version	0.0
L0 Software Version	12.2.1 (2021.334.05)
SPF Filter Type	NONE
Replica Reconstruction Method	MEAN
Range Multilooking Weighting Function	HAMMING
Azimuth Multilooking Weighting Function	HAMMING
Multilook filter flag	1
Beam Mosaicking Policy	MIDDLE JOINT
Equivalent Number of Looks	4.357894014
Azimuth Processing Number of Looks	2
Range Processing Number of Looks	3
Range Focusing Weighting Function	NONE
Azimuth Focusing Weighting Function	NONE
Focusing Algorithm ID	SPECAN
Doppler Rate Estimation Method	GEOMETRY
Doppler Centroid Estimation Method	MLCC
Doppler Ambiguity Estimation Method	MPAR

Product Characteristics

Azimuth Geometric Resolution	30
Ground Range Geometric Resolution	30

Pcd Info

Name	Doppler Rate Estimation Accuracy
Value	0.04
Result	OK

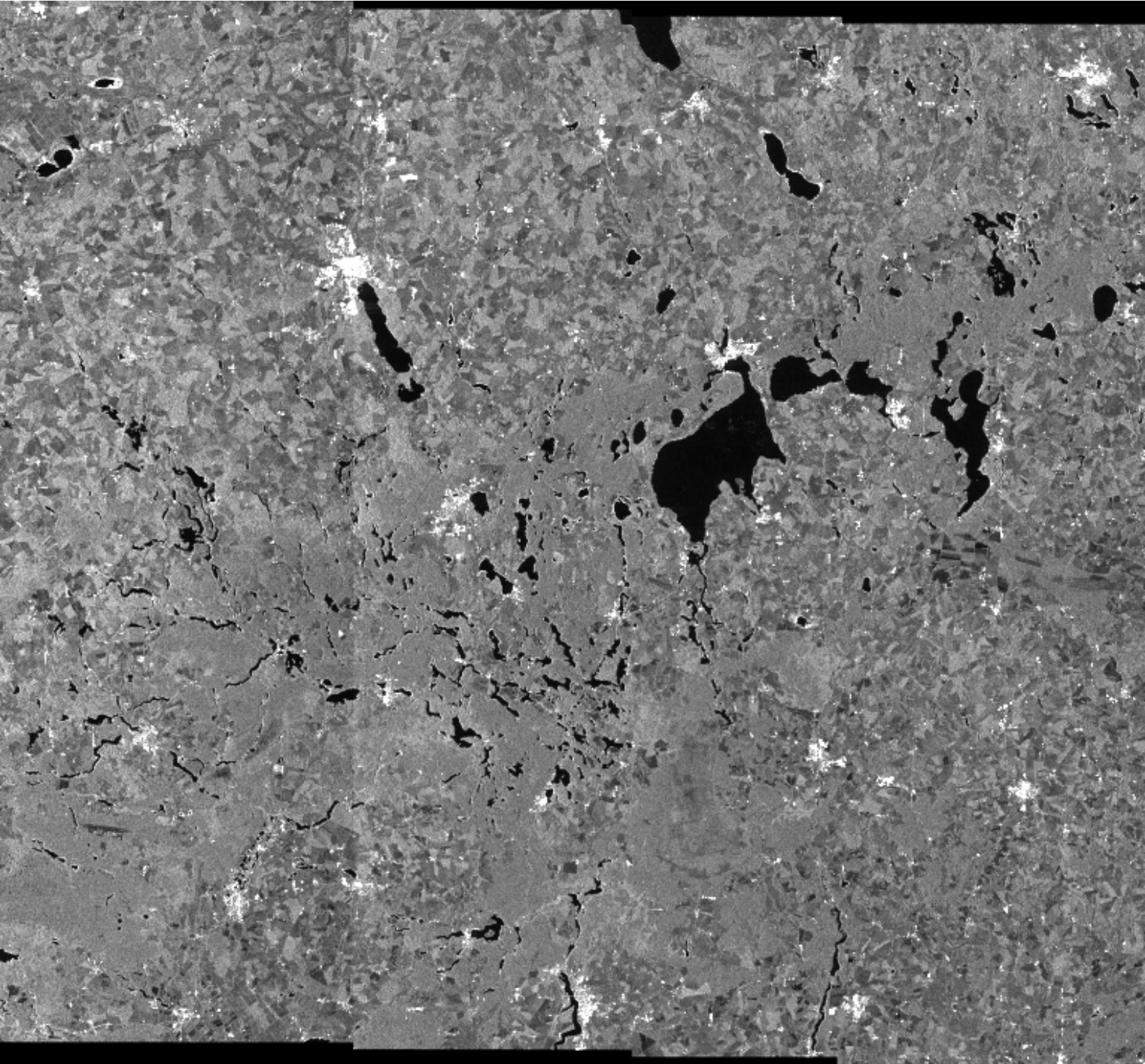
ResultInfo	>=0
------------	-----

Format Info

Product Format	HDF5
Prod Spec Document	CSM-UGS-STD-SPE-0048-3.5
Sample Format	UINT
Samples Per Pixel	1
Bits Per Sample	16

Other Info

Processing Centre	ICUGS
Provider Id	PM01



UNCLASSIFIED

54°36'00"

54°36'00"

53°49'12"

53°49'12"

53°02'24"

53°02'24"

52°15'36"

52°15'36"

51°28'48"

51°28'48"

11°42'00"

12°28'48"

13°15'36"

14°02'24"

14°49'12"

UNCLASSIFIED

