

## Delivery Note

### Product Info

Product File Name	CSKS3_GEC_B_PP_03_CO_RD_SF_20170513171729_20170513171736.h5
Product Identifier	3930314
Mission Identifier	CSK
Unique Identifier	100.2524186.1765510
Product Generation Date	2023-07-30 21:07:52.000000000
Delivery Request Id	2524186
Service Request Id	2524186

### Product Definition Data

Product Type	GEC_B
Scene sensing start utc	2017-05-13 17:17:29.417986536
Scene sensing stop utc	2017-05-13 17:17:36.012001263
Bottom Left	53.11439822 12.53313628 0
Bottom Right	53.12676312 13.22733802 0
Top Left	53.59170984 12.50540593 0
Top Right	53.60429043 13.20739916 0
Top Right EN	381390 5940990
Scene Centre	53.35980623 12.86833982 0
Satellite Id	CSKS3
Acquisition Mode	PINGPONG
Look Side	RIGHT
Near Look Angle	24.41194331
Far Look Angle	27.01700583
Projection Id	UTM
Delivery Mode	STANDARD
Acquisition Station Id	1100/ICACQ/Matera

### Processing Info

Processing Level	Level-1C
------------------	----------

### Ancillary Data Reference

Ground Projection Reference Surface	ELLIPSOID
-------------------------------------	-----------

Ellipsoid Designator	WGS84
POD Product Category	FILTERED
Attitude Product Category	RESTITUTED

## Algorithms

SPF Software Version	0.0
L1C Software Version	01.02-13
L1B Software Version	01.03.00
L1A Software Version	N/A
L0 Software Version	12.2.1 (2021.334.05)
SPF Filter Type	NONE
Replica Reconstruction Method	REPLICA
Range Multilooking Weighting Function	HAMMING
Azimuth Multilooking Weighting Function	HAMMING
Multilook filter flag	1
Beam Mosaicking Policy	N/A
Equivalent Number of Looks	2.81432
Equivalent Number of Looks	2.81432
Azimuth Processing Number of Looks	2
Range Processing Number of Looks	2
Range Focusing Weighting Function	HAMMING
Azimuth Focusing Weighting Function	NONE
Focusing Algorithm ID	SPECAN
Doppler Rate Estimation Method	GEOMETRY
Doppler Centroid Estimation Method	ACCC
Doppler Ambiguity Estimation Method	GEOMETRY

## Product Characteristics

Azimuth Geometric Resolution	20
Ground Range Geometric Resolution	20

## Pcd Info

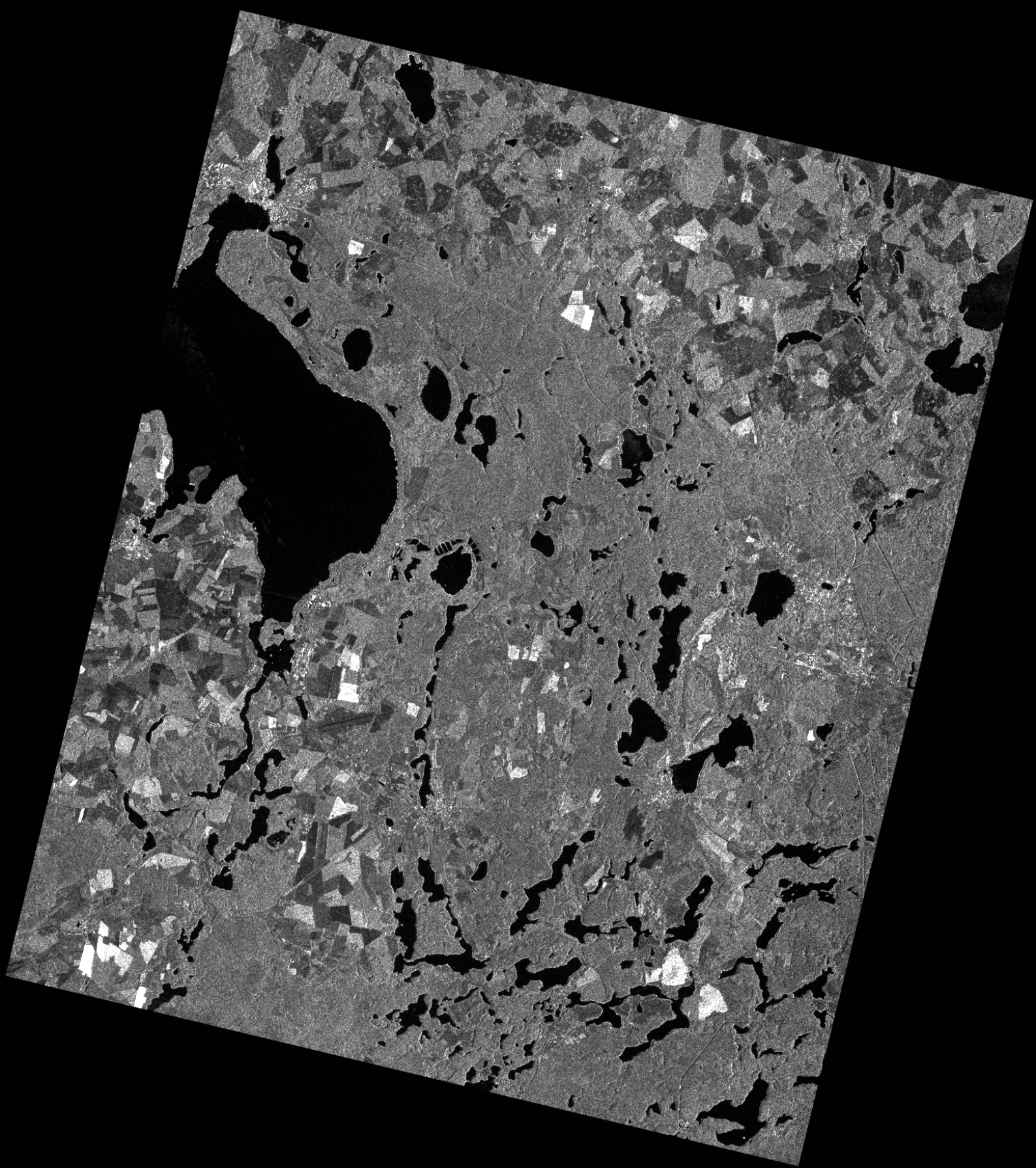
Name	Doppler Rate Estimation Accuracy
Value	0.04
Result	OK
ResultInfo	>=0

**Format Info**

Product Format	GEOTIFF
Prod Spec Document	CSM-UGS-STD-TNO-0561-3.0
Sample Format	UINT
Samples Per Pixel	1
Bits Per Sample	16

**Other Info**

Processing Centre	ICUGS
Provider Id	PM01



UNCLASSIFIED

54°32'24"

54°32'24"

54°00'00"

54°00'00"

53°27'36"

53°27'36"

52°55'12"

52°55'12"

52°22'48"

52°22'48"

11°52'48"

12°25'12"

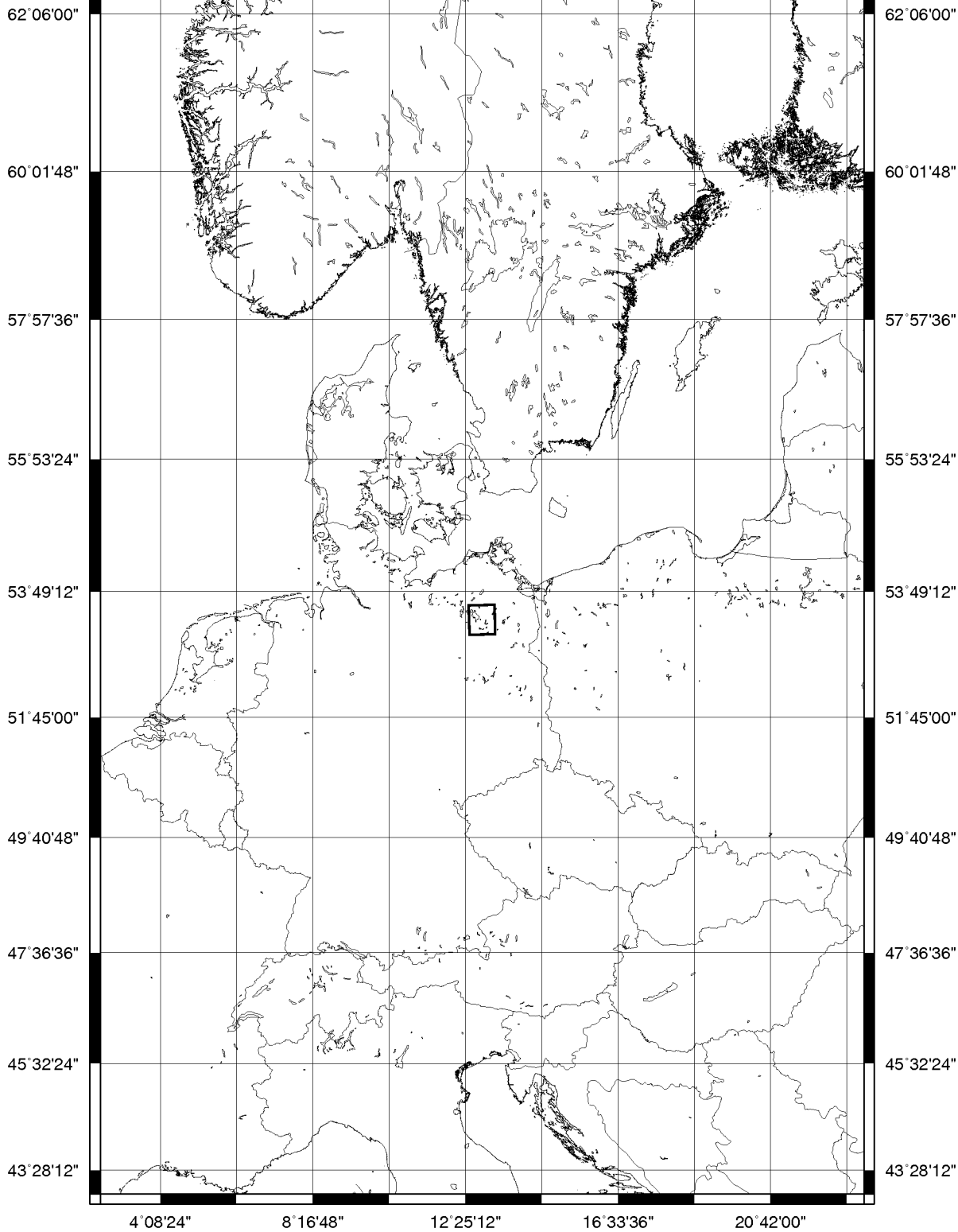
12°57'36"

13°30'00"

14°02'24"

UNCLASSIFIED

UNCLASSIFIED



UNCLASSIFIED