

Delivery Note

Product Info

Product File Name	CSKS3_DGM_B_PP_03_CO_RD_SF_20170513171729_20170513171736.h5
Product Identifier	3930283
Mission Identifier	CSK
Unique Identifier	100.2524178.1765501
Product Generation Date	2023-07-30 21:01:50.000000000
Delivery Request Id	2524178
Service Request Id	2524178

Product Definition Data

Product Type	DGM_B
Scene sensing start utc	2017-05-13 17:17:29.417986536
Scene sensing stop utc	2017-05-13 17:17:36.012001263
Bottom Left	53.12454889 13.06511949 0
Bottom Right	53.19140154 12.52923802 0
Top Left	53.52774919 13.21046621 0
Top Right	53.59488163 12.66960008 0
Scene Centre	53.35030197 12.86507932 0
Satellite Id	CSKS3
Acquisition Mode	PINGPONG
Look Side	RIGHT
Near Look Angle	24.41194331
Far Look Angle	27.01592335
Projection Id	GROUND RANGE/AZIMUTH
Delivery Mode	STANDARD
Acquisition Station Id	1100/ICACQ/Matera

Processing Info

Processing Level	Level-1B
------------------	----------

Ancillary Data Reference

Ground Projection Reference Surface	ELLIPSOID
Ellipsoid Designator	WGS84
POD Product Category	FILTERED
Attitude Product Category	RESTITUTED

Algorithms

SPF Software Version	0.0
L1B Software Version	01.03.00
L1A Software Version	N/A
L0 Software Version	12.2.1 (2021.334.05)
SPF Filter Type	NONE
Replica Reconstruction Method	REPLICA
Range Multilooking Weighting Function	HAMMING
Azimuth Multilooking Weighting Function	HAMMING
Multilook filter flag	1
Beam Mosaicking Policy	N/A
Equivalent Number of Looks	2.81432
Equivalent Number of Looks	2.81432
Azimuth Processing Number of Looks	2
Range Processing Number of Looks	2
Range Focusing Weighting Function	HAMMING
Azimuth Focusing Weighting Function	NONE
Focusing Algorithm ID	SPECAN
Doppler Rate Estimation Method	GEOMETRY
Doppler Centroid Estimation Method	ACCC
Doppler Ambiguity Estimation Method	GEOMETRY

Product Characteristics

Azimuth Geometric Resolution	20
Ground Range Geometric Resolution	20

Pcd Info

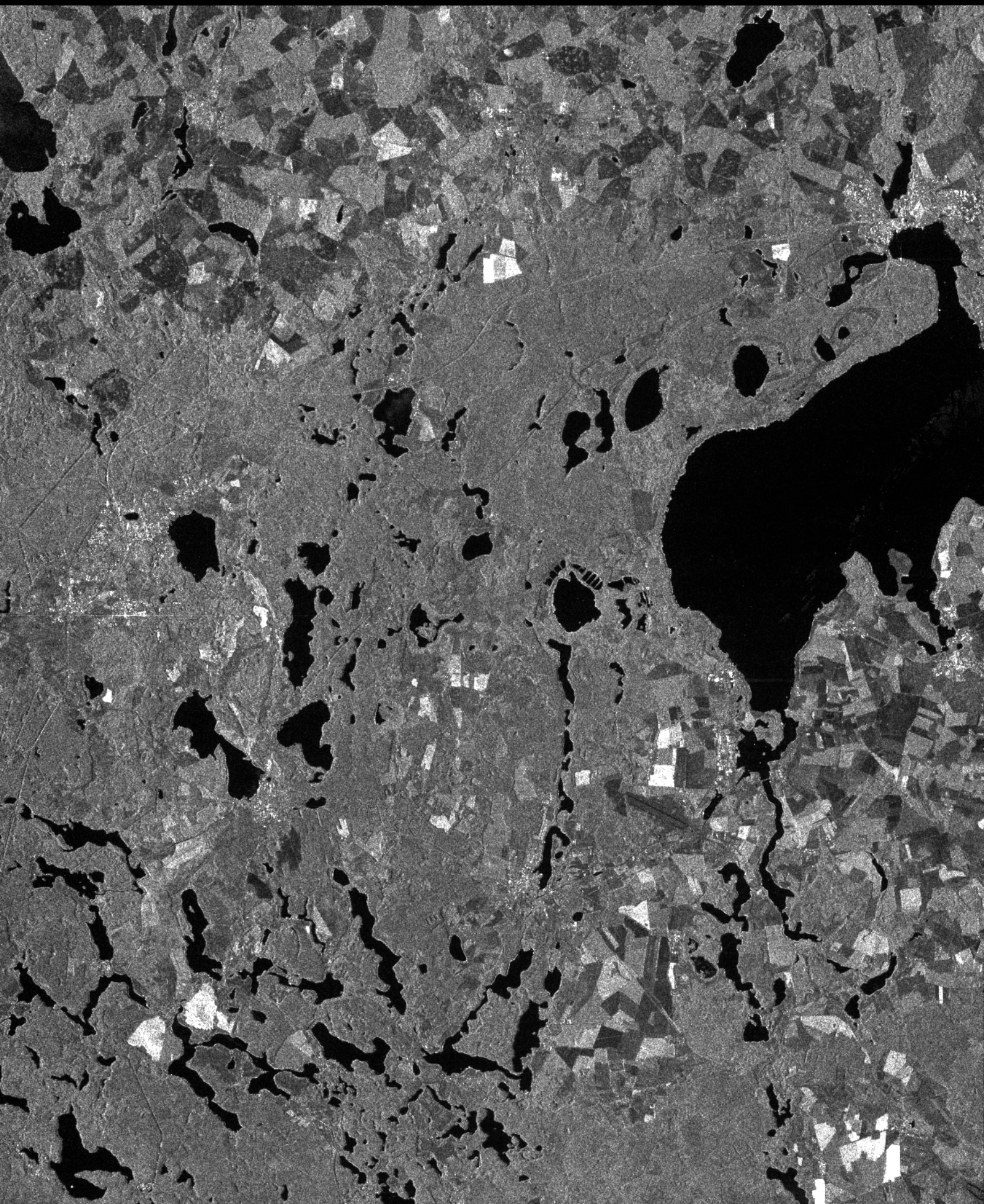
Name	Doppler Rate Estimation Accuracy
Value	0.04
Result	OK
ResultInfo	>=0

Format Info

Product Format	HDF5
Prod Spec Document	CSM-UGS-STD-SPE-0048-3.1
Sample Format	UINT
Samples Per Pixel	1
Bits Per Sample	16

Other Info

Processing Centre	ICUGS
Provider Id	PM01



UNCLASSIFIED

54°32'24"

54°32'24"

54°00'00"

54°00'00"

53°27'36"

53°27'36"

52°55'12"

52°55'12"

52°22'48"

52°22'48"

11°52'48"

12°25'12"

12°57'36"

13°30'00"

14°02'24"

UNCLASSIFIED

UNCLASSIFIED

62°06'00"

62°06'00"

60°01'48"

60°01'48"

57°57'36"

57°57'36"

55°53'24"

55°53'24"

53°49'12"

53°49'12"

51°45'00"

51°45'00"

49°40'48"

49°40'48"

47°36'36"

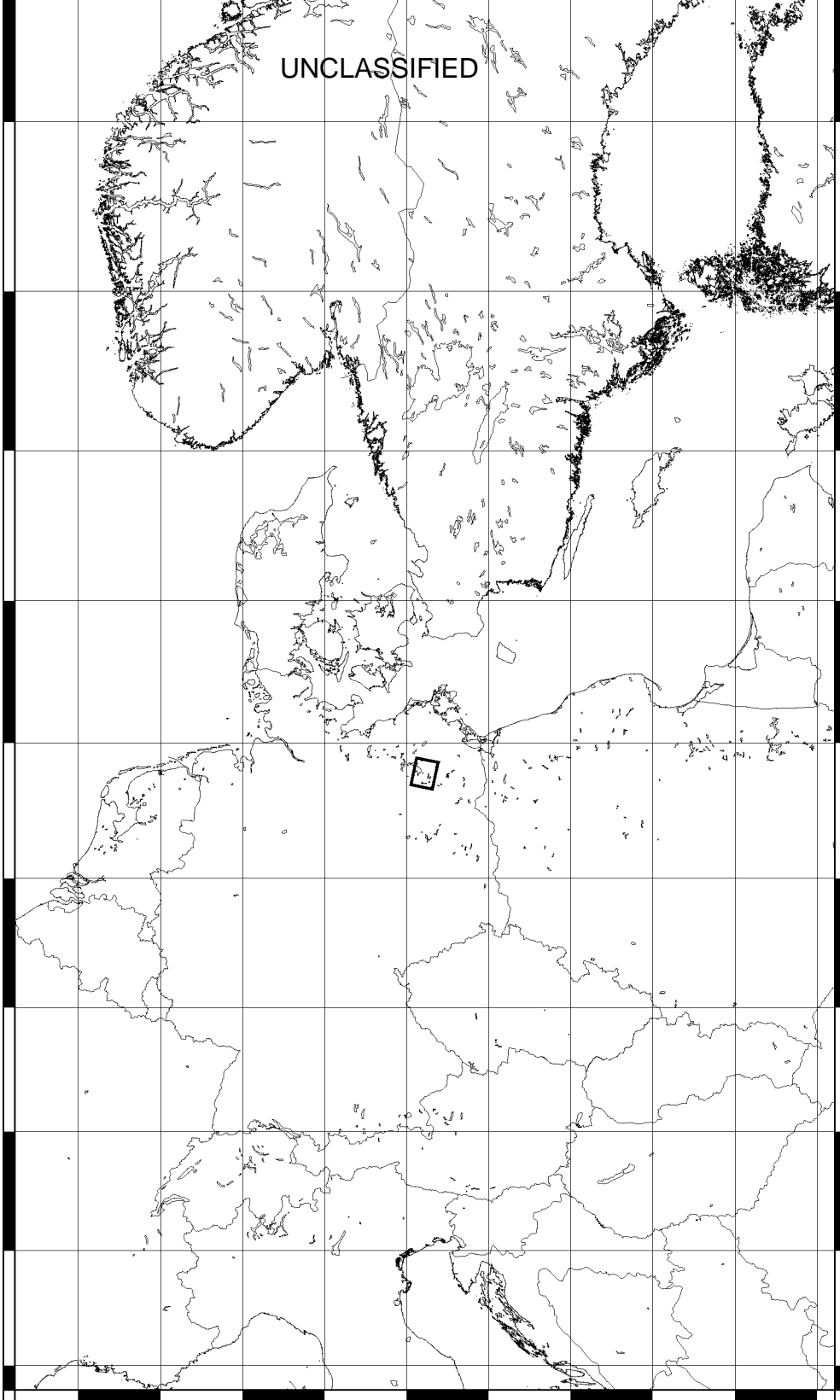
47°36'36"

45°32'24"

45°32'24"

43°28'12"

43°28'12"



4°08'24"

8°16'48"

12°25'12"

16°33'36"

20°42'00"

UNCLASSIFIED