

Delivery Note

Product Info

Product File Name	CSG_SSAR2_DGM_B_0401_SC2_00 3_HV_RA_F_20220822043643_2022 0822043712_1_F_53N_Z33_N00.h5
Product Identifier	3933495
Mission Identifier	CSG
Unique Identifier	100.2524329.1765980
Product Generation Date	2023-07-31 21:33:23.464779000
Delivery Request Id	2524329
Service Request Id	2524329

Product Definition Data

Product Type	DGM_B
Scene sensing start utc	2022-08-22 04:36:42.584721190
Scene sensing stop utc	2022-08-22 04:37:11.868299835
Bottom Left	54.12144965 11.92574443 0
Bottom Right	54.45331794 15.22964449 0
Top Left	52.32085895 12.51753854 0
Top Right	52.64963056 15.68243142 - 9.313225746e-10
Top Right EN	-nan -nan
Scene Centre	53.38590357 13.84275498 88.25567771
Satellite Id	SSAR2
Acquisition Mode	SCANSAR-2
Look Side	RIGHT
Near Look Angle	30.0903696
Far Look Angle	41.85701309
Projection Id	GROUND RANGE/AZIMUTH
Acquisition Station Id	1301/EACQ02/Kiruna

Processing Info

Processing Level	Level-1B
------------------	----------

Ancillary Data Reference

Ground Projection Reference Surface	ELLIPSOID
Ellipsoid Designator	WGS84
POD Product Category	FILTERED
Attitude Product Category	RESTITUTED

Algorithms

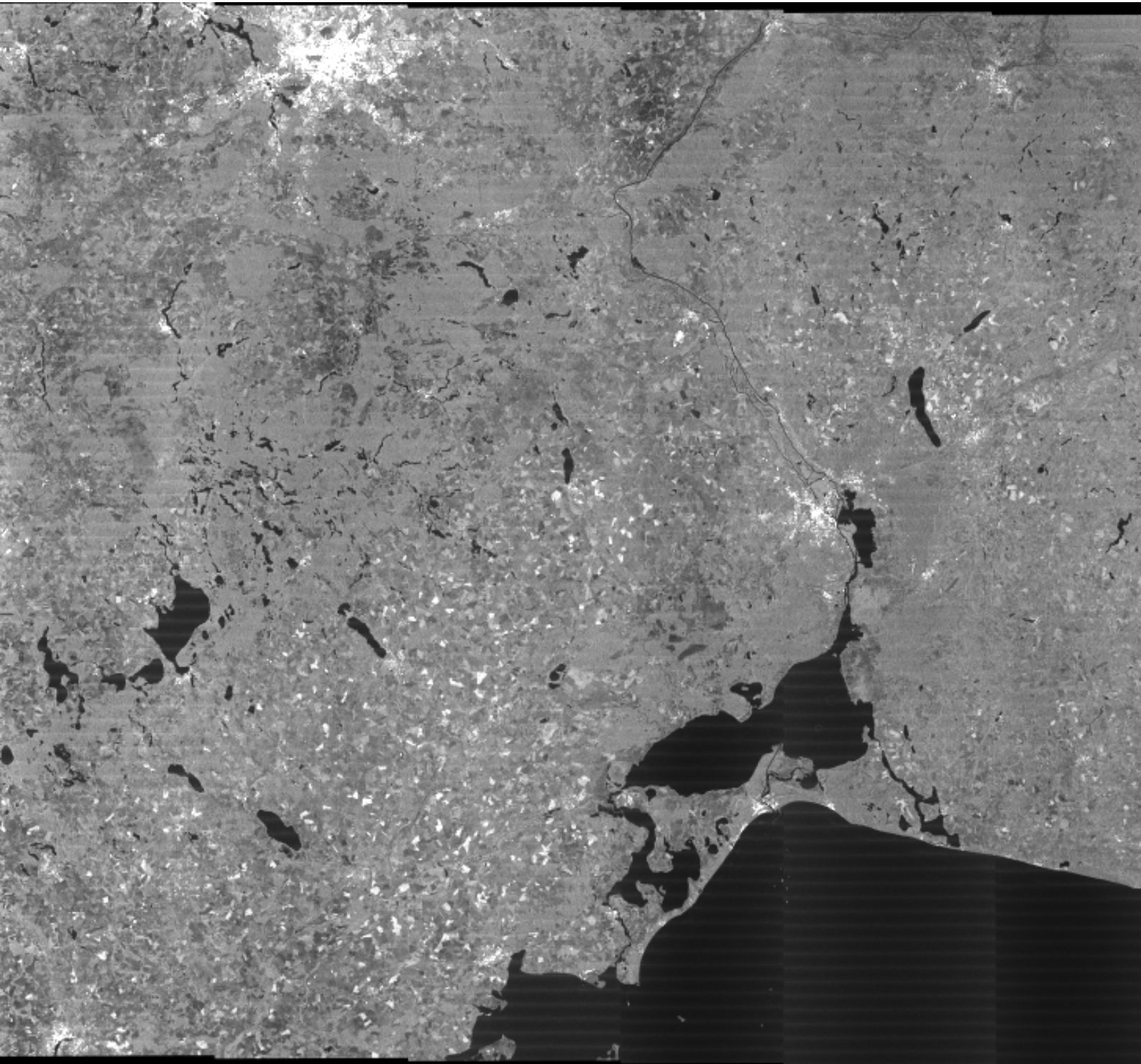
Equivalent Number of Looks	3.935266087
L1B Software Version	1.14.0
L0 Software Version	4.0-1 (2023.174.18)
Replica Reconstruction Method	MEAN
Range Multilooking Weighting Function	HAMMING
Azimuth Multilooking Weighting Function	NONE
Beam Mosaicking Policy	MIDDLE JOINT
Azimuth Processing Number of Looks	1
Range Focusing Weighting Function	NONE
Azimuth Focusing Weighting Function	HAMMING
Focusing Algorithm ID	SPECAN
Doppler Rate Estimation Method	GEOMETRY
Doppler Centroid Estimation Method	MLCC
Doppler Ambiguity Estimation Method	MPAR

Format Info

Product Format	HDF5
----------------	------

Other Info

Processing Centre	ICUGS
Provider Id	PM01



UNCLASSIFIED

55°12'00"

55°12'00"

54°03'00"

54°03'00"

52°54'00"

52°54'00"

51°45'00"

51°45'00"

50°36'00"

50°36'00"

11°30'00"

12°39'00"

13°48'00"

14°57'00"

16°06'00"

UNCLASSIFIED

