

## Delivery Note

### Product Info

Product File Name	CSG_SSAR2_DGM_B_0401_SC2_00 3_HH_RA_F_20220822043643_2022 0822043712_1_F_53N_Z33_N00.h5
Product Identifier	3933486
Mission Identifier	CSG
Unique Identifier	100.2524328.1765977
Product Generation Date	2023-07-31 21:30:52.460773000
Delivery Request Id	2524328
Service Request Id	2524328

### Product Definition Data

Product Type	DGM_B
Scene sensing start utc	2022-08-22 04:36:42.584721190
Scene sensing stop utc	2022-08-22 04:37:11.868299835
Bottom Left	54.12330556 11.92511615 - 3.725290298e-09
Bottom Right	54.45517718 15.22916334 1.862645149e-09
Top Left	52.32333654 12.516747 - 9.313225746e-10
Top Right	52.65211147 15.68181748 0
Top Right EN	-nan -nan
Scene Centre	53.38838194 13.84203922 88.74128578
Satellite Id	SSAR2
Acquisition Mode	SCANSAR-2
Look Side	RIGHT
Near Look Angle	30.09029448
Far Look Angle	41.8569546
Projection Id	GROUND RANGE/AZIMUTH
Acquisition Station Id	1100/ICACQ/Matera

### Processing Info

Processing Level	Level-1B
------------------	----------

## Ancillary Data Reference

Ground Projection Reference Surface	ELLIPSOID
Ellipsoid Designator	WGS84
POD Product Category	FILTERED
Attitude Product Category	RESTITUTED

## Algorithms

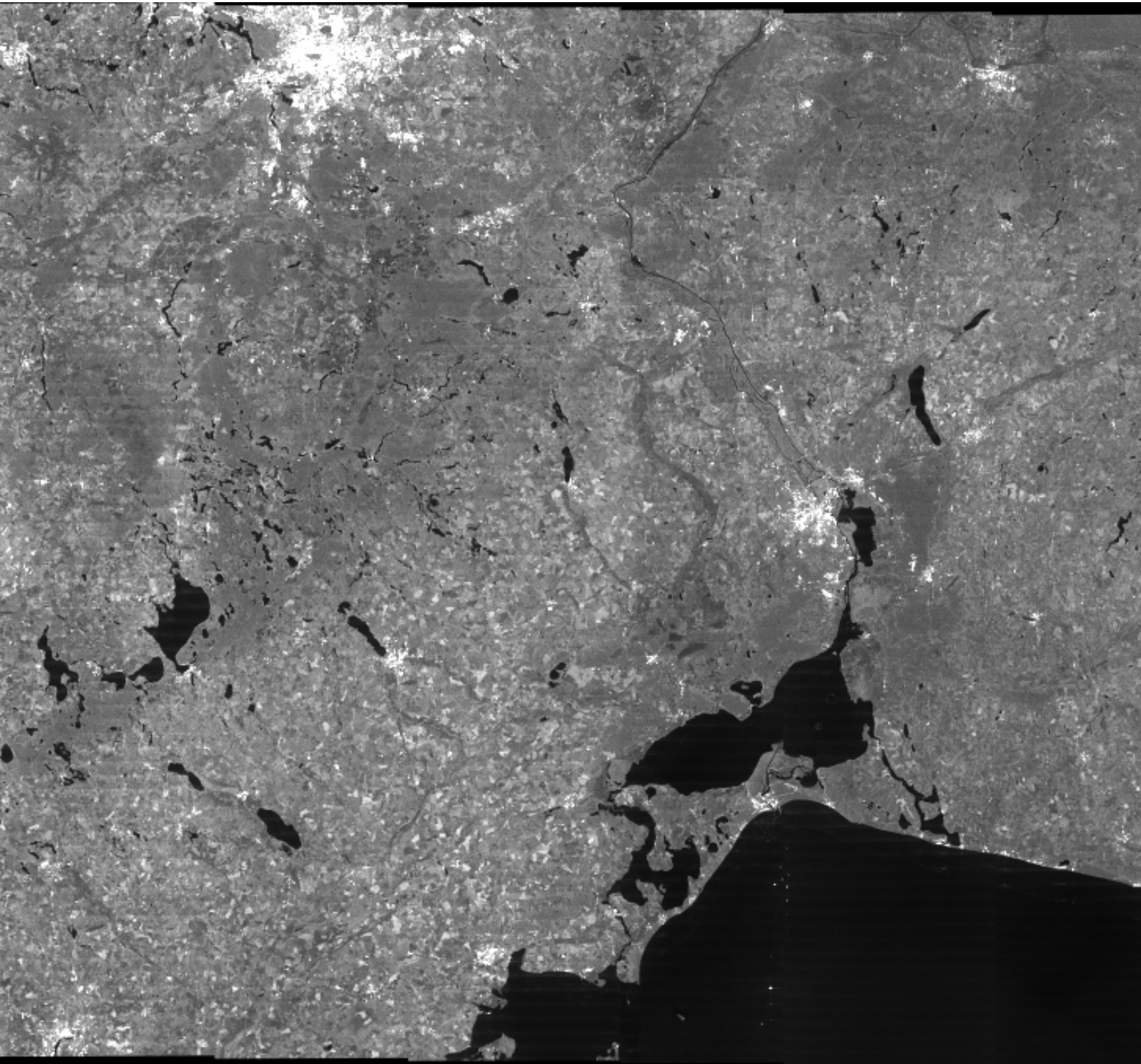
Equivalent Number of Looks	3.935266064
L1B Software Version	1.14.0
L0 Software Version	4.0-1 (2023.174.18)
Replica Reconstruction Method	MEAN
Range Multilooking Weighting Function	HAMMING
Azimuth Multilooking Weighting Function	NONE
Beam Mosaicking Policy	MIDDLE JOINT
Azimuth Processing Number of Looks	1
Range Focusing Weighting Function	NONE
Azimuth Focusing Weighting Function	HAMMING
Focusing Algorithm ID	SPECAN
Doppler Rate Estimation Method	GEOMETRY
Doppler Centroid Estimation Method	MLCC
Doppler Ambiguity Estimation Method	MPAR

## Format Info

Product Format	HDF5
----------------	------

## Other Info

Processing Centre	ICUGS
Provider Id	PM01



UNCLASSIFIED

55°12'00"

55°12'00"

54°03'00"

54°03'00"

52°54'00"

52°54'00"

51°45'00"

51°45'00"

50°36'00"

50°36'00"

11°30'00"

12°39'00"

13°48'00"

14°57'00"

16°06'00"

UNCLASSIFIED

