

Delivery Note

Product Info

Product File Name	CSG_SSAR2_GEC_B_0101_QPS_01 2_HV_RD_F_20220926171205_2022 0926171211_1_F_53N_Z33_N00.h5
Product Identifier	3933466
Mission Identifier	CSG
Unique Identifier	100.2524323.1765964
Product Generation Date	2023-07-31 21:22:06.663728000
Delivery Request Id	2524323
Service Request Id	2524323

Product Definition Data

Product Type	GEC_B
Scene sensing start utc	2022-09-26 17:12:04.514912657
Scene sensing stop utc	2022-09-26 17:12:11.124871697
Bottom Left	53.14005831 12.80701999 0
Bottom Right	53.14645899 13.18747953 0
Top Left	53.5380737 12.7864963 0
Top Right	53.54456732 13.17051116 0
Top Right EN	378778.75 5934408.75
Scene Centre	53.34263964 12.9858569 101.8099136
Satellite Id	SSAR2
Acquisition Mode	QUADPOL
Look Side	RIGHT
Near Look Angle	31.28751262
Far Look Angle	32.32907663
Projection Id	UTM
Acquisition Station Id	1100/ICACQ/Matera

Processing Info

Processing Level	Level-1C
------------------	----------

Ancillary Data Reference

Ground Projection Reference Surface	NONE
Ellipsoid Designator	WGS84
POD Product Category	FILTERED
Attitude Product Category	RESTITUTED

Algorithms

Equivalent Number of Looks	1
L1C Software Version	2.0-2+1B.2.0-3+1A.4.0-6 (2022.300.17)
L0 Software Version	4.0-1 (2023.174.18)
Replica Reconstruction Method	REPLICA
Range Multilooking Weighting Function	HAMMING
Azimuth Multilooking Weighting Function	HAMMING
Beam Mosaicking Policy	N/A
Azimuth Processing Number of Looks	1
Range Focusing Weighting Function	NONE
Azimuth Focusing Weighting Function	NONE
Focusing Algorithm ID	OMEGA-KEY
Doppler Rate Estimation Method	CENTROID
Doppler Centroid Estimation Method	ACCC
Doppler Ambiguity Estimation Method	GEOMETRY

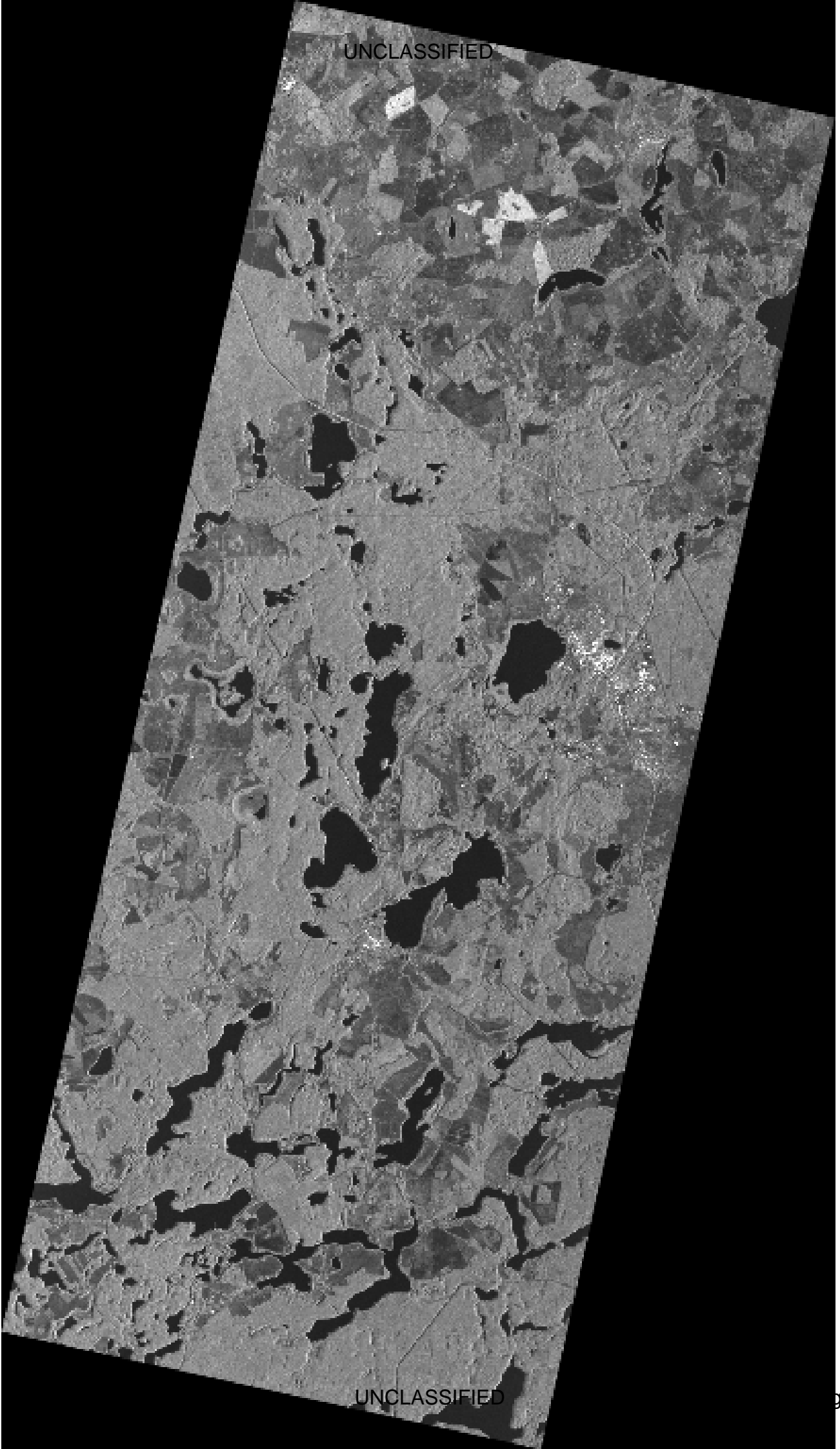
Format Info

Product Format	GEOTIFF
----------------	---------

Other Info

Processing Centre	ICUGS
Provider Id	PM01

UNCLASSIFIED



UNCLASSIFIED

UNCLASSIFIED

54°14'24"

54°14'24"

53°45'36"

53°45'36"

53°16'48"

53°16'48"

52°48'00"

52°48'00"

52°19'12"

52°19'12"

12°00'00"

12°28'48"

12°57'36"

13°26'24"

13°55'12"

UNCLASSIFIED

