

## Delivery Note

### Product Info

|                         |   |
|-------------------------|---|
| Product File Name       | CSG_SSAR2_GEC_B_0101_QPS_01<br>2_HH_RD_F_20220926171205_2022<br>0926171211_1_F_53N_Z33_N00.h5 |
| Product Identifier      | 3933523   |
| Mission Identifier      | CSG   |
| Unique Identifier       | 100.2524321.1766004   |
| Product Generation Date | 2023-07-31 21:51:19.169525000   |
| Delivery Request Id     | 2524321   |
| Service Request Id      | 2524321   |

### Product Definition Data

|                         |  |
|-------------------------|--|
| Product Type            | GEC_B                                  |
| Scene sensing start utc | 2022-09-26 17:12:04.514912657          |
| Scene sensing stop utc  | 2022-09-26 17:12:11.124871697          |
| Bottom Left             | 53.1376284 12.80628408 0               |
| Bottom Right            | 53.14403126 13.18672199 0              |
| Top Left                | 53.53564376 12.78575533 0              |
| Top Right               | 53.54213959 13.16974804 0              |
| Top Right EN            | 378721.25 5934140                      |
| Scene Centre            | 53.34020205 12.98512892<br>101.5820007 |
| Satellite Id            | SSAR2                                  |
| Acquisition Mode        | QUADPOL                                |
| Look Side               | RIGHT                                  |
| Near Look Angle         | 31.28748431                            |
| Far Look Angle          | 32.32905028                            |
| Projection Id           | UTM                                    |
| Acquisition Station Id  | 1100/ICACQ/Matera                      |

### Processing Info

|                  |          |
|------------------|----------|
| Processing Level | Level-1C |
|------------------|----------|

### Ancillary Data Reference

---

|                                     |            |
|-------------------------------------|------------|
| Ground Projection Reference Surface | NONE       |
| Ellipsoid Designator                | WGS84      |
| POD Product Category                | FILTERED   |
| Attitude Product Category           | RESTITUTED |

### Algorithms

|   |  |
|---|--|
| Equivalent Number of Looks              | 1  |
| L1C Software Version                    | 2.0-2+1B.2.0-3+1A.4.0-6<br>(2022.300.17) |
| L0 Software Version                     | 4.0-1 (2023.174.18)                      |
| Replica Reconstruction Method           | REPLICA                                  |
| Range Multilooking Weighting Function   | HAMMING                                  |
| Azimuth Multilooking Weighting Function | HAMMING                                  |
| Beam Mosaicking Policy                  | N/A                                      |
| Azimuth Processing Number of Looks      | 1  |
| Range Focusing Weighting Function       | NONE                                     |
| Azimuth Focusing Weighting Function     | NONE                                     |
| Focusing Algorithm ID                   | OMEGA-KEY                                |
| Doppler Rate Estimation Method          | CENTROID                                 |
| Doppler Centroid Estimation Method      | ACCC                                     |
| Doppler Ambiguity Estimation Method     | GEOMETRY                                 |

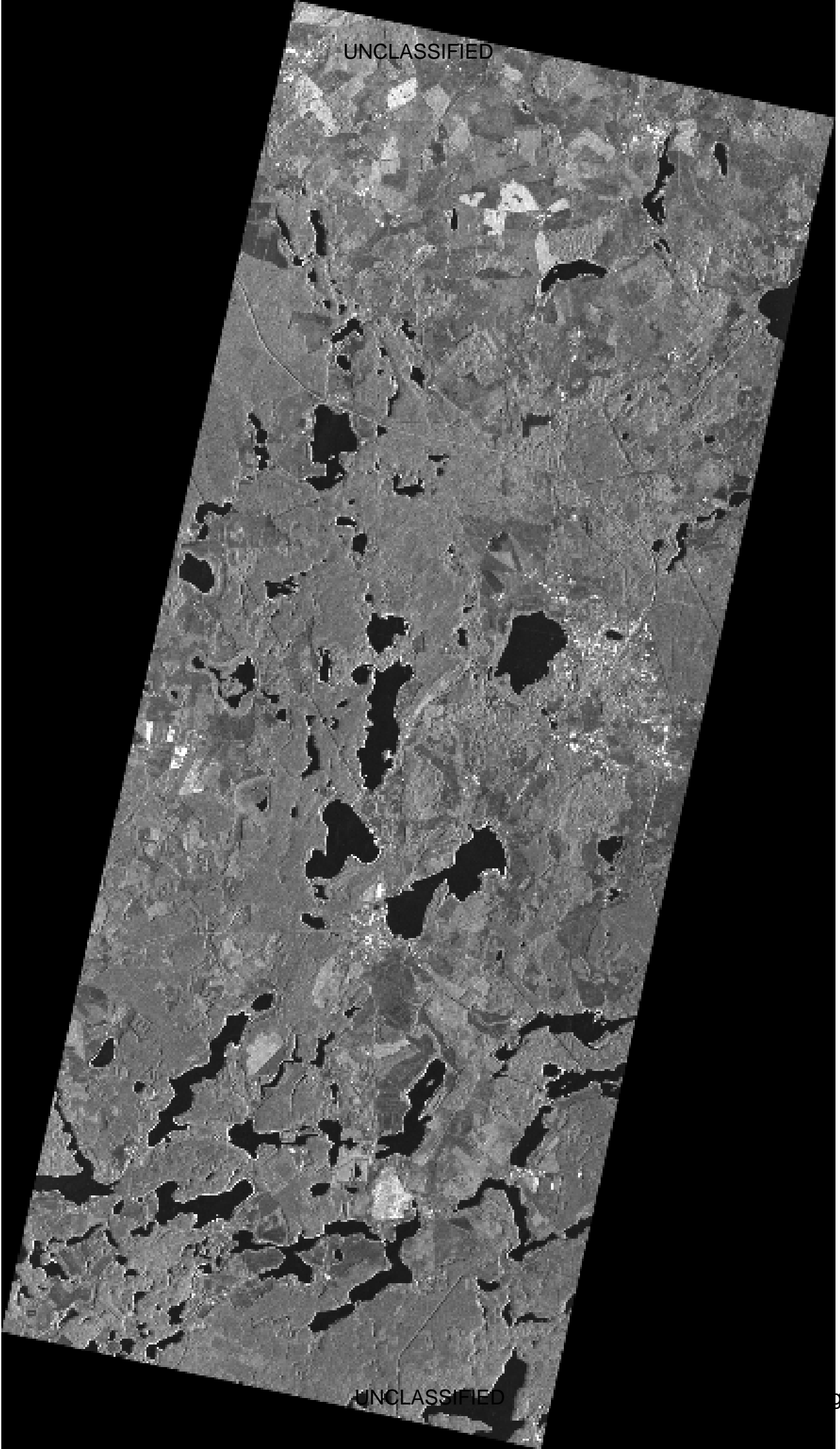
### Format Info

|                |         |
|----------------|---------|
| Product Format | GEOTIFF |
|----------------|---------|

### Other Info

|                   |       |
|-------------------|-------|
| Processing Centre | ICUGS |
| Provider Id       | PM01  |

UNCLASSIFIED



UNCLASSIFIED

UNCLASSIFIED

54°14'24"

54°14'24"

53°45'36"

53°45'36"

53°16'48"

53°16'48"

52°48'00"

52°48'00"

52°19'12"

52°19'12"

12°00'00"

12°28'48"

12°57'36"

13°26'24"

13°55'12"

UNCLASSIFIED

Page 4 of 5

