

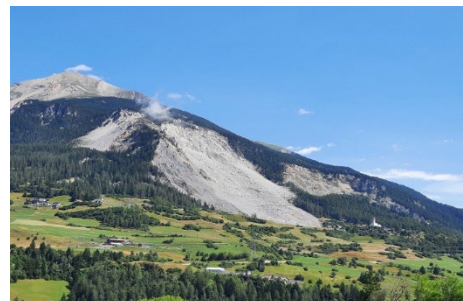
Heritage data provide insight into Alpine landslides

30 May 2024

Using radar data from ESA's Envisat, ERS and Copernicus Sentinel-1 satellites, scientists have shown how satellite radar interferometry can shed light on landslide processes in the Swiss Alps.

Populations residing in mountainous regions are under constant threat of geo-hazards, such as slope instability and rock falls. Understanding how these processes evolve over time can help estimate the hazard and support civil protection strategies.

A research collaboration between two Swiss research entities - the Department of Earth Sciences of ETH Zurich, the WSL Institute for Snow and Avalanche Research SLF, located in Davos, and the Swiss company GAMMA Remote Sensing - sheds light on pros and cons of satellite radar interferometry as a tool for landslide hazard investigation.



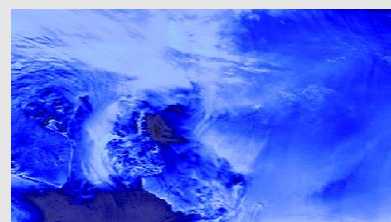
[READ MORE](#)

LATEST DATA NEWS

ERS ATSR fourth Reprocessing datasets available to users

24 May 2024

The fourth Reprocessing of the ATSR L1B datasets derived from the ERS-1 and ERS-2 satellites have now been released to users by the European Space Agency (ESA).

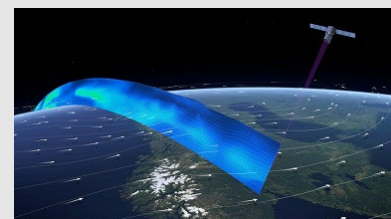


[READ MORE](#)

Aeolus fourth Reprocessing Campaign Data published

22 May 2024

The Aeolus mission has released its latest data update, Baseline 16, encompassing operations from 28 June 2019, to 4 October 2022.



[READ MORE](#)



Highlight on:

Beyond cloud nine: 10 reasons to be excited about EarthCARE

27 May 2024

With the launch of EarthCARE, ESA's most complex Earth Explorer satellite yet, clouds, aerosols and radiation are about to become a whole lot clearer – at least scientifically.

A unique blend of four instruments will work together to resolve some of the most mysterious aspects of our atmosphere. The data will be invaluable for improving climate models.

To celebrate the mission's launch, read this article for ten reasons to be excited about EarthCARE.



[READ MORE](#)

Have data from ESA's various satellite missions benefited your work? Would you like to share the results from your research?

Contact us and we may be able to publish an article or conduct an interview related to your experience.

[CONTACT US](#)

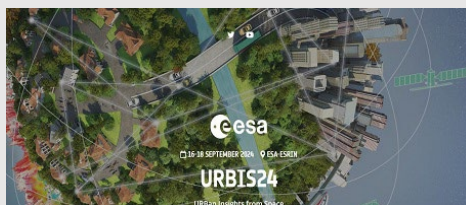
UPCOMING EVENTS



03/09/2024

2024 European Polar Science Week
Registration closes on 31 July

[READ MORE](#)



16/09/2024

URBIS24 (URBan Insights from Space)
Registration opens 31 May

[READ MORE](#)



02/12/2024

VH-RODA 2024

[READ MORE](#)



Focus on: Data access

How to access Aeolus data

ESA's wind mission, Aeolus, operated for almost five years, from August 2018 to April 2023.

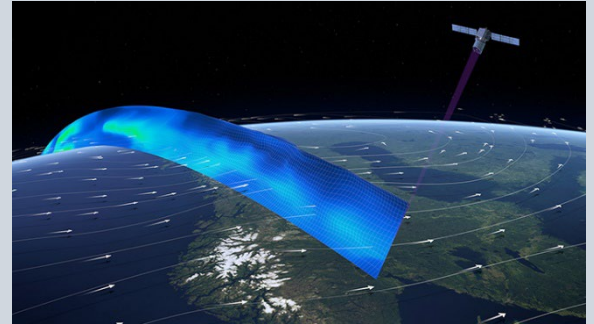
The satellite carried the Atmospheric Laser Doppler Instrument (ALADIN), which was a direct detection Doppler lidar capable of providing accurate global measurements of winds from Earth's surface up to 30 km.

Aeolus successfully contributed to many applications, including:

- Improving weather forecasts
- Providing new insights into atmospheric dynamics, aerosols, and clouds
- Tracking air pollution, desert dust, smoke and volcanic ash

Access to the archive of Aeolus data is open to anyone with an active account in ESA's EO Sign-In service.

Available data collections are organised by different processing levels and thematic areas, such as aerosol/cloud and Rayleigh/Mie wind products.



Artist's concept of Aeolus profiling wind.
Credit: ESA/ATG medialab



Artist's concept of Aeolus measuring cyclones.
Credit: ESA/ATG medialab

[VIEW COLLECTIONS](#)

LATEST QUALITY REPORTS

[SEE ALL REPORTS](#)

CryoSat SIRAL Daily NOP Ocean Report

Published on 15/05/2024

[DOWNLOAD](#)

SMOS Weekly Report

Published on 01/04/2024

[DOWNLOAD](#)

Swarm Weekly L1B Report

Published on 11/03/2024

[DOWNLOAD](#)

In this Issue

Heritage data provide insight into Alpine landslides

[READ MORE](#)

Aeolus fourth Reprocessing Campaign Data published

[READ MORE](#)

ERS ATSR fourth Reprocessing datasets available to users

[READ MORE](#)

Beyond cloud nine: 10 reasons to be excited about EarthCARE

[READ MORE](#)

[CONTACT US](#)



[UNSUBSCRIBE](#)



[Data Access
Missions](#)

[News
Events](#)

[Tools
Documents](#)

[Discover More](#)