



AEROSOL RETRIEVAL IMPROVEMENTS

ERWIN WOLTERS, STEFAN ADRIAENSEN, SINDY STERCKX

CONTENTS

- **Recap previous QWG → AOT retrieval**

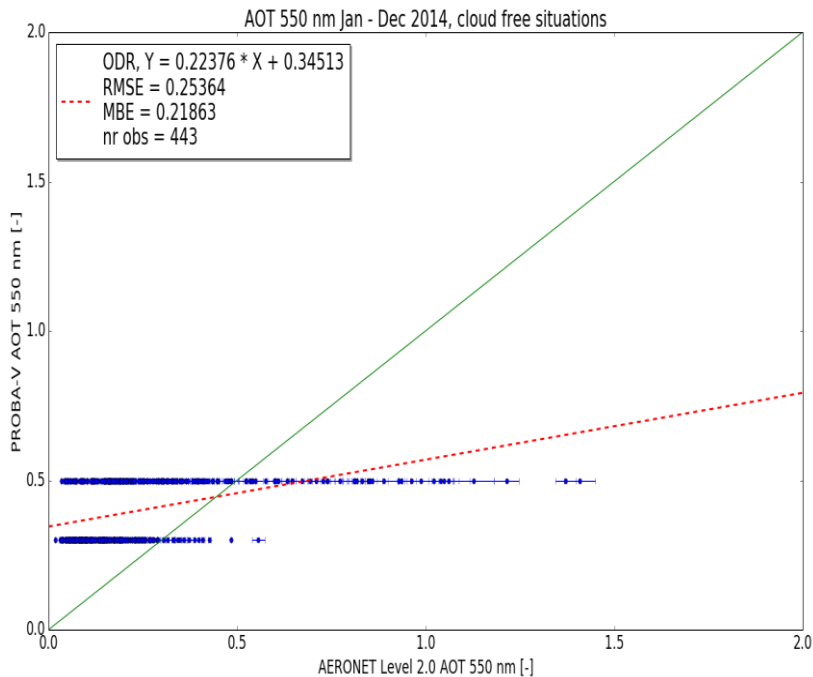
- **OPERA AOT retrieval**
 - Validation results: ACIX & PV-LAC
 - Implementation feasibility: examples OPERA and current AOT

- **CAMS NRT AOT**
 - Recent upgrade
 - Data availability

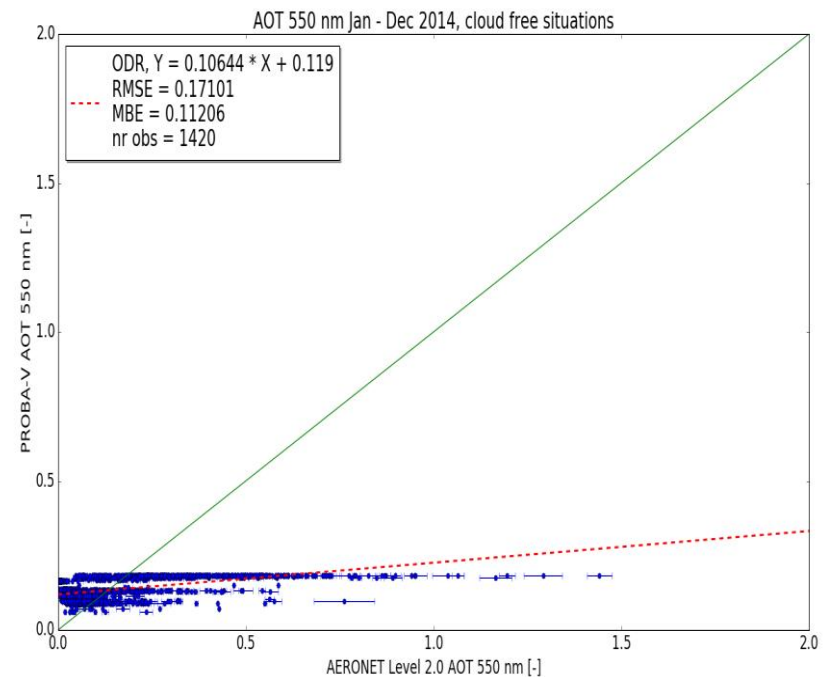
- **Remaining actions**

RECAP: PROBA-V AOT VALIDATION RESULTS

AOT retrieval

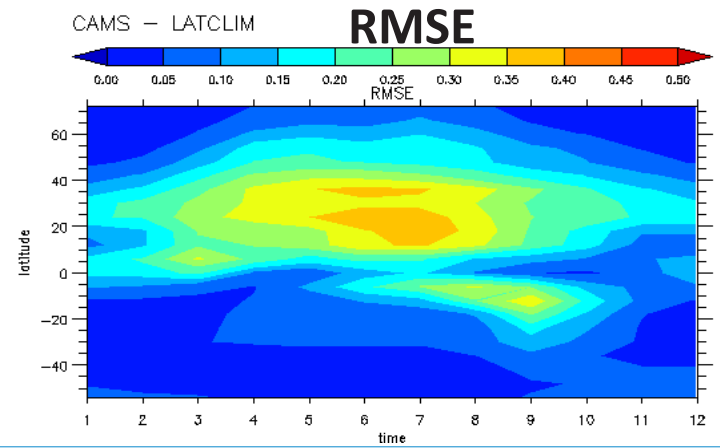
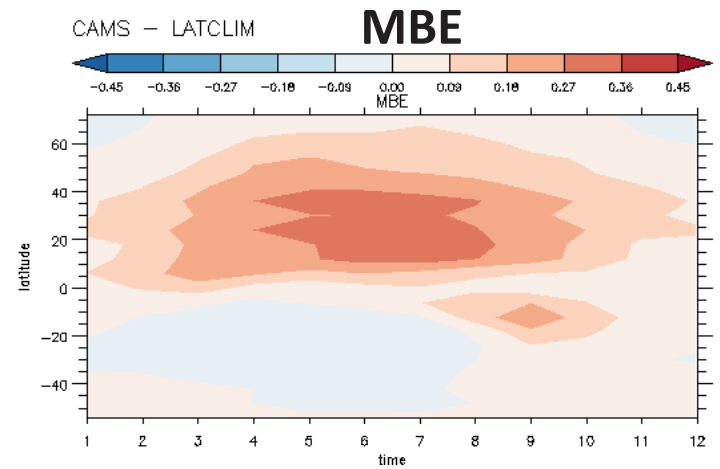
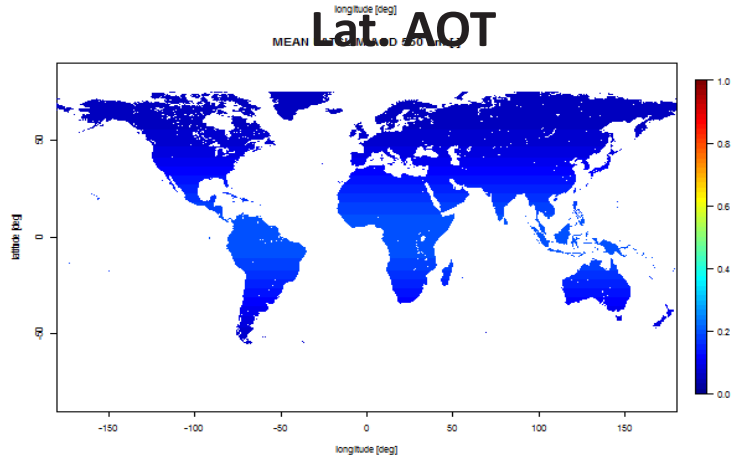
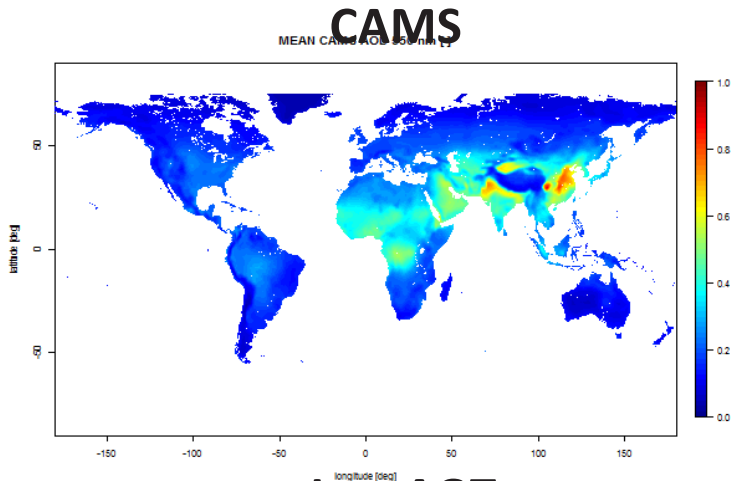


AOT latitudinal function



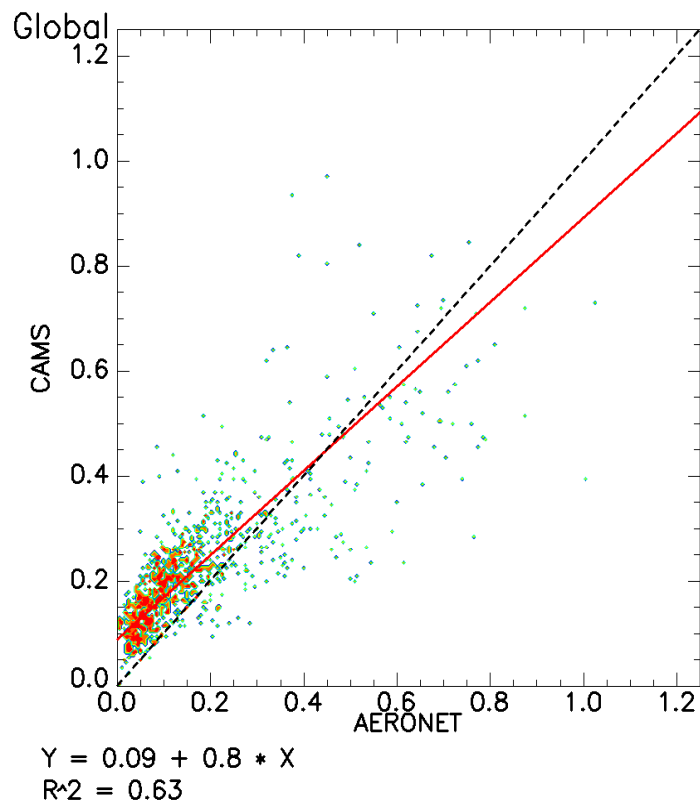
PROBA-V AOT VALIDATION RESULTS

- Comparison of lat. function to CAMS AOT dataset (monthly means)

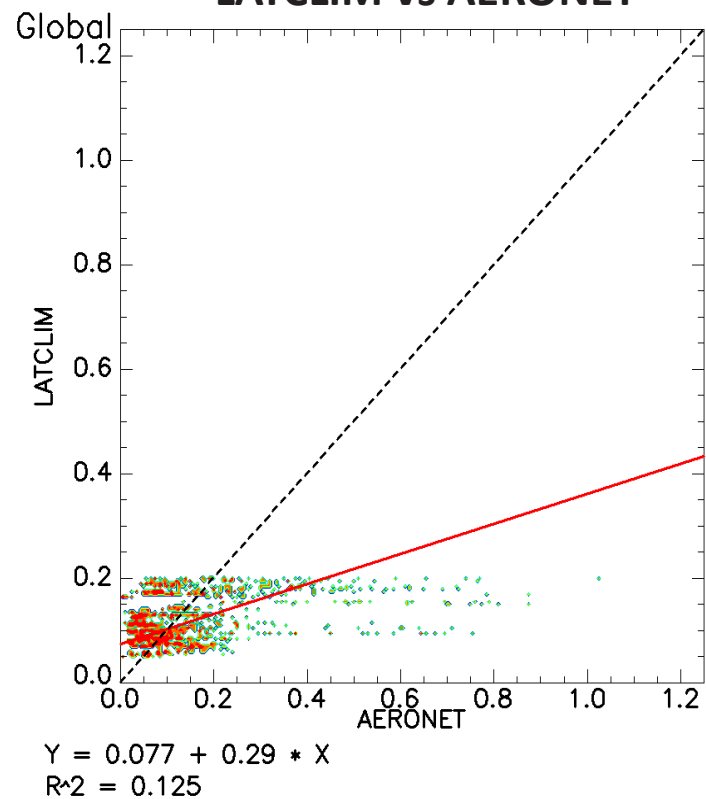


LATITUDINAL AOT & CAMS AOT VS AERONET

CAMS vs AERONET



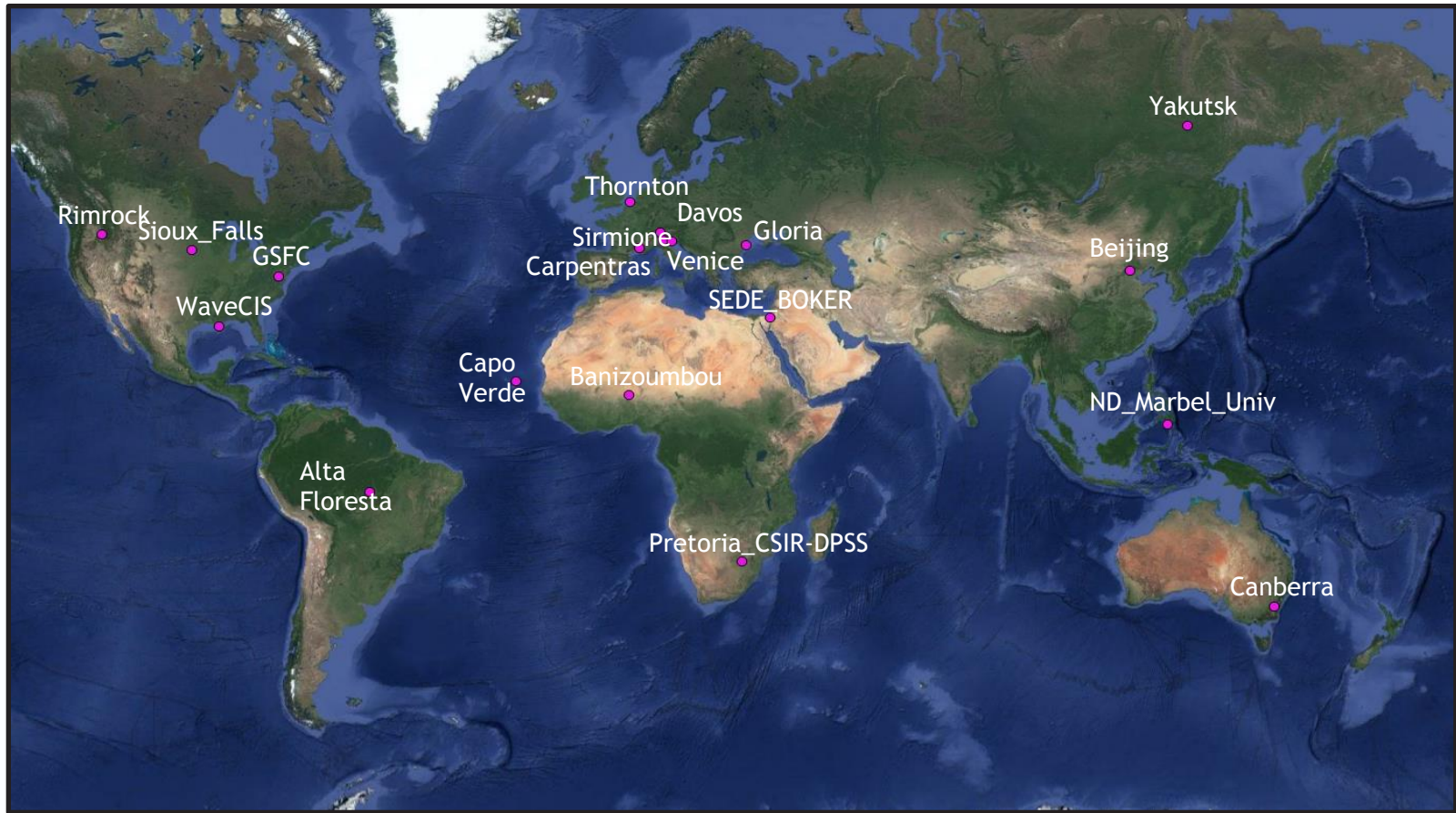
LATCLIM vs AERONET



OPERA AOT RETRIEVAL

- **Based on Guanter et al. (2008)**
 - Superpixels of 30 x 30 km²
 - Applied within OPERA: sensor-generic AC software
 - AOT = [0,1]
- **Participation in ACIX (applied to Sen-2 and LS8, global sites)**
- **Implementation for PROBA-V feasible**
 - LUTs computed for 100 m center camera
 - Cloud-free and snow/ice free pixels processed
 - Applied to Level 2A segments

OPERA AOT: VALIDATION ACIX

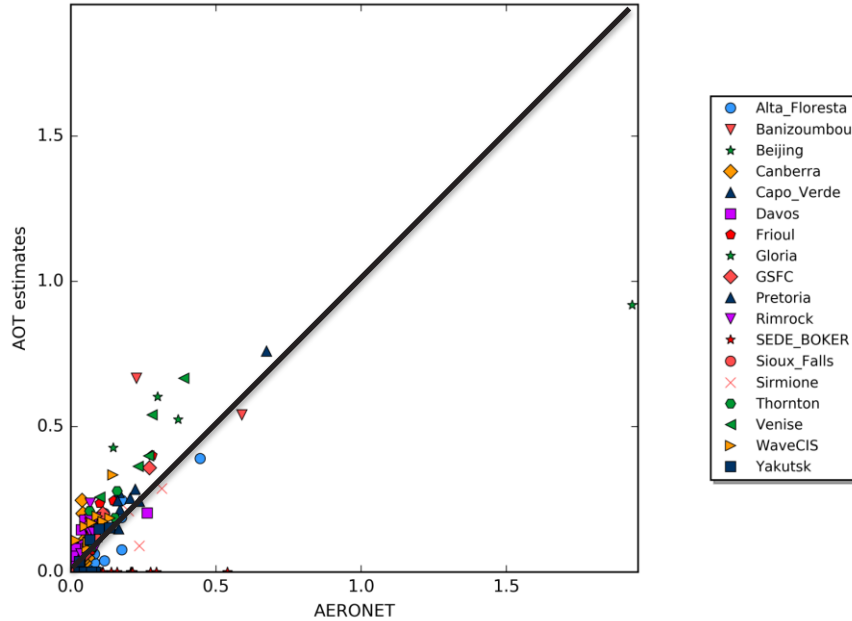


AOT validated with AERONET Level 1.5 AOT

OPERA AOT: VALIDATION ACIX

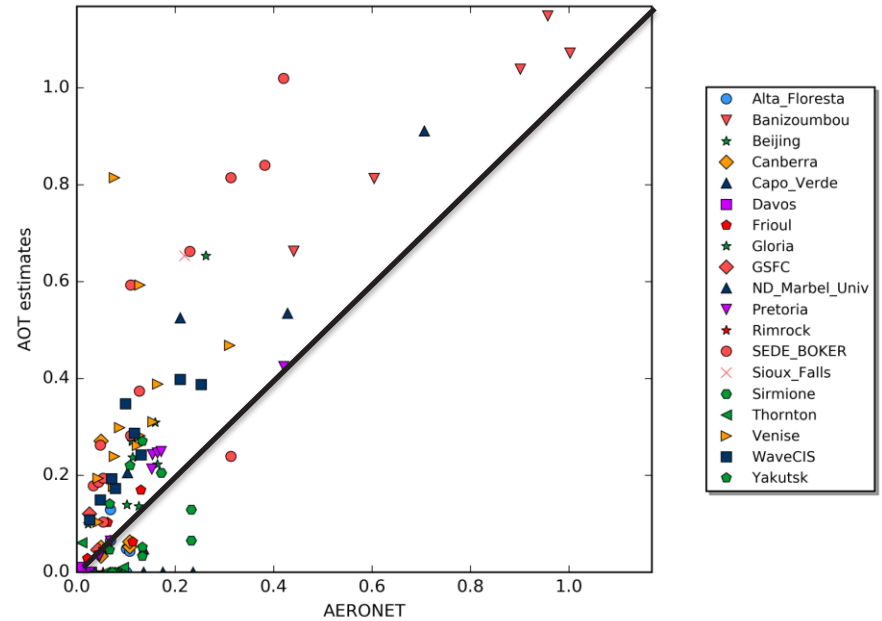
Landsat 8

OPERA-advanced

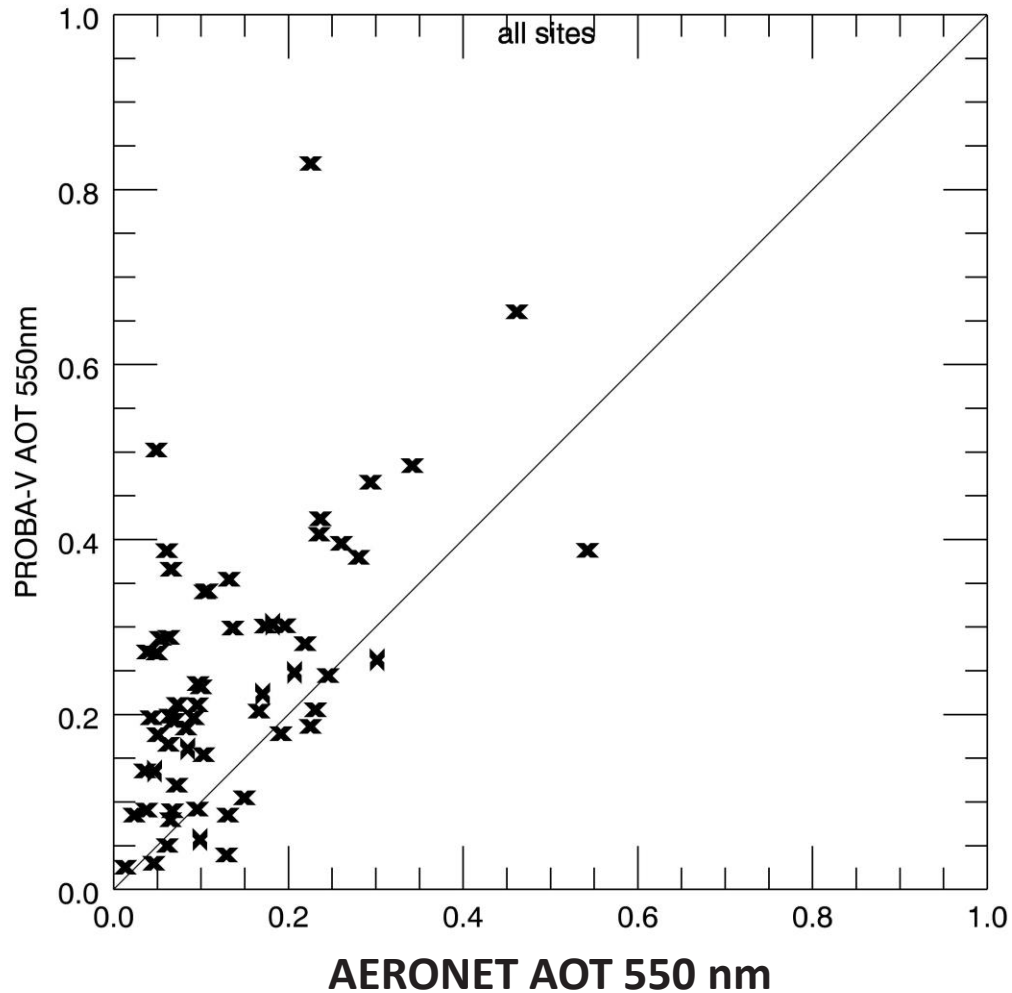


Sentinel 2

OPERA-advanced

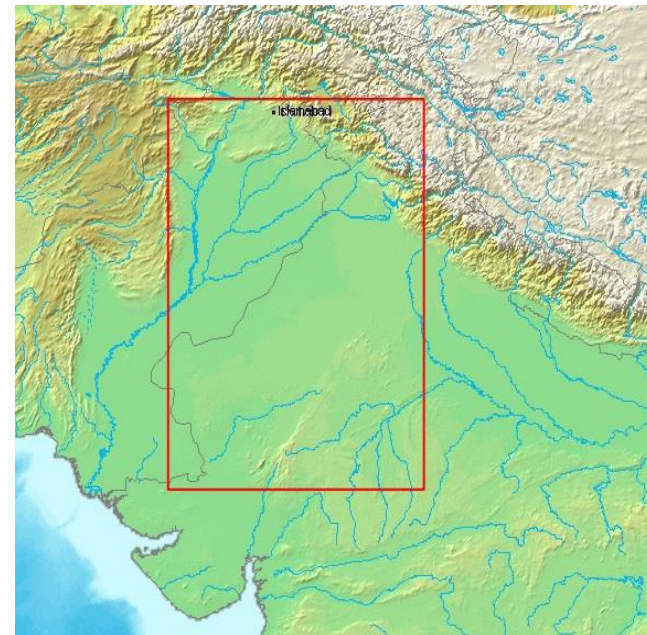


OPERA AOT VALIDATION PV-LAC

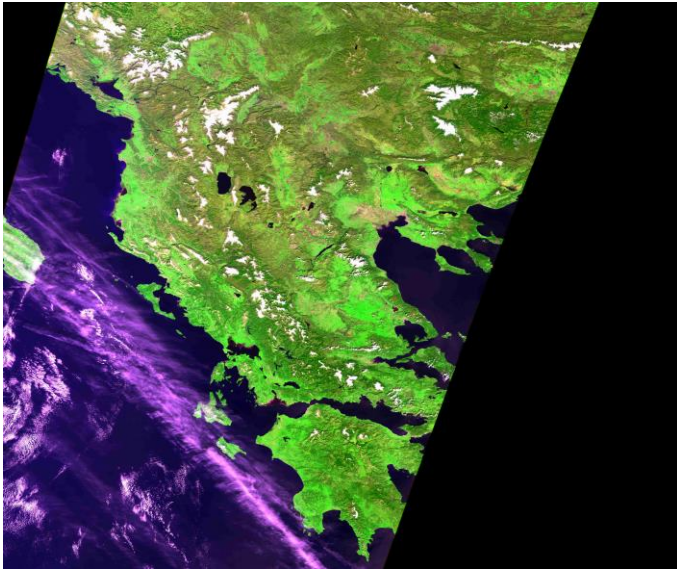


COMPARISON OPERA VS CURRENT AOT

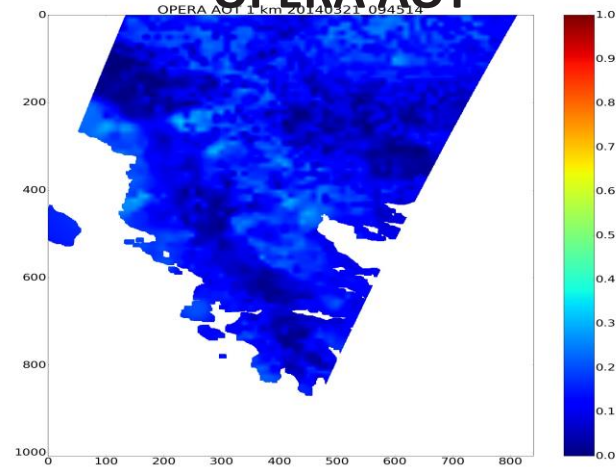
- PROBA-V 100 m center camera
- OPERA, current AOT, MODIS MOD04 AOT as reference



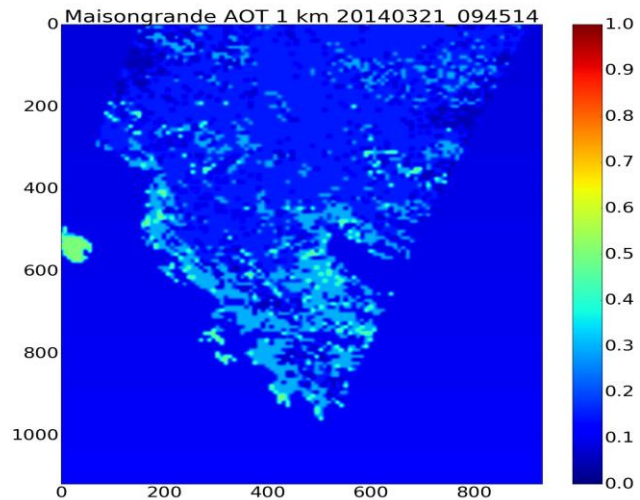
OPERA VS CURRENT AOT – GREECE 21/3/2014 0945



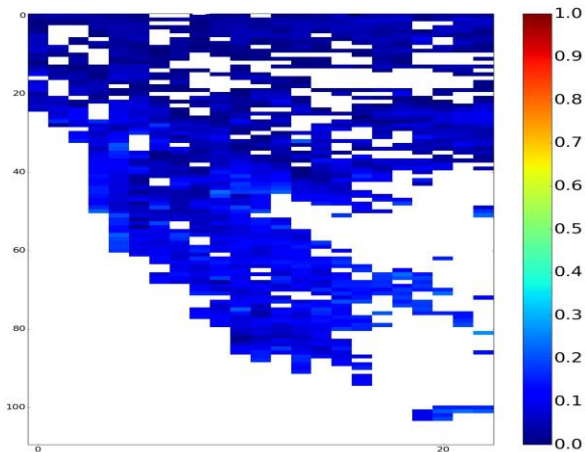
OPERA AOT



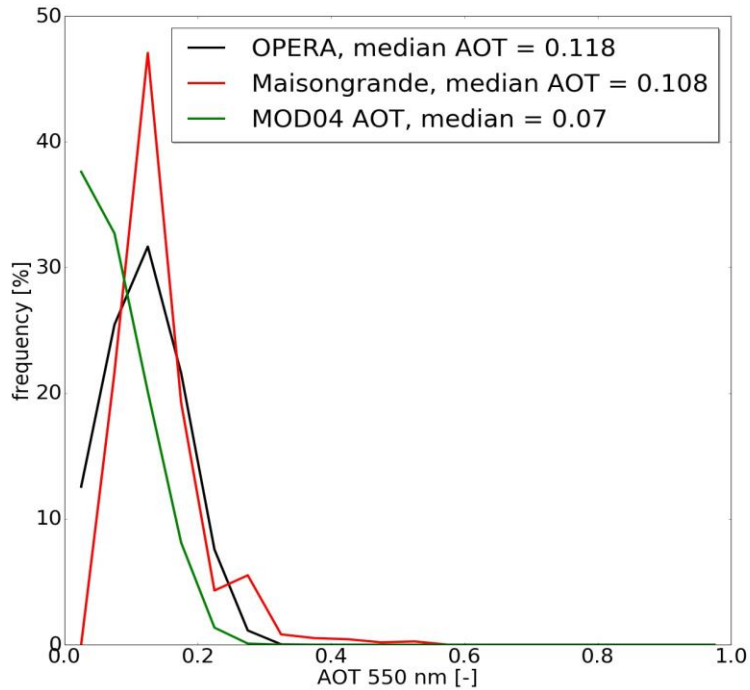
Current AOT



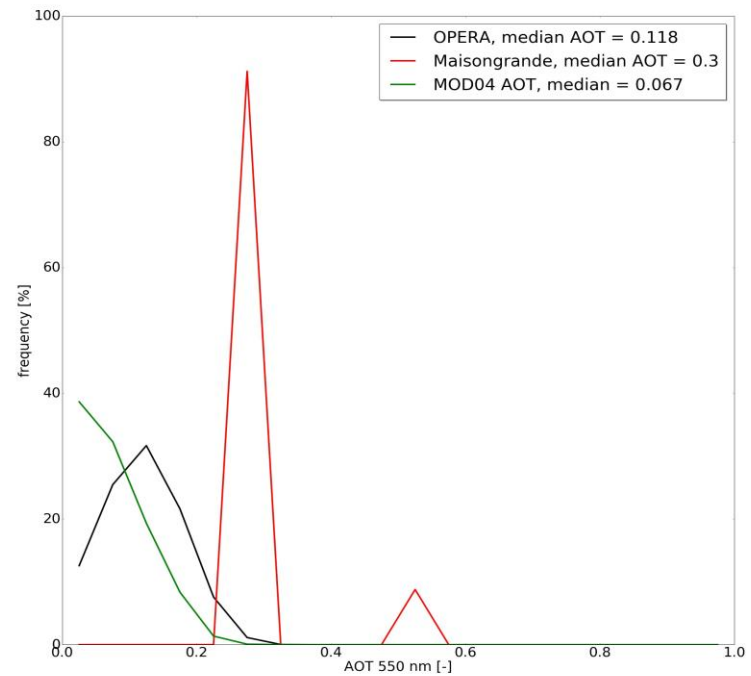
MOD 04 AOT 20140321 0850



AOT HISTOGRAMS

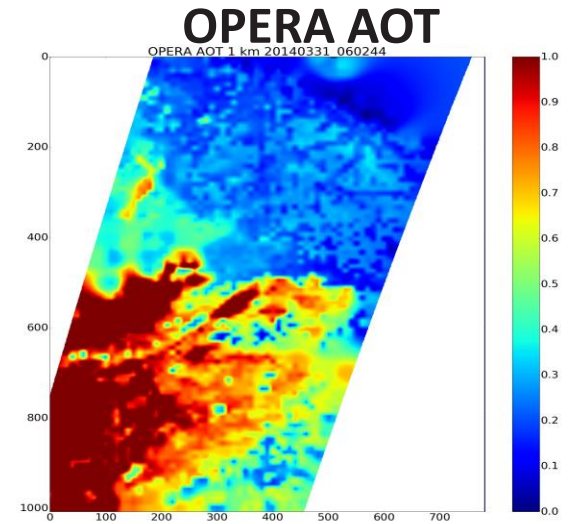
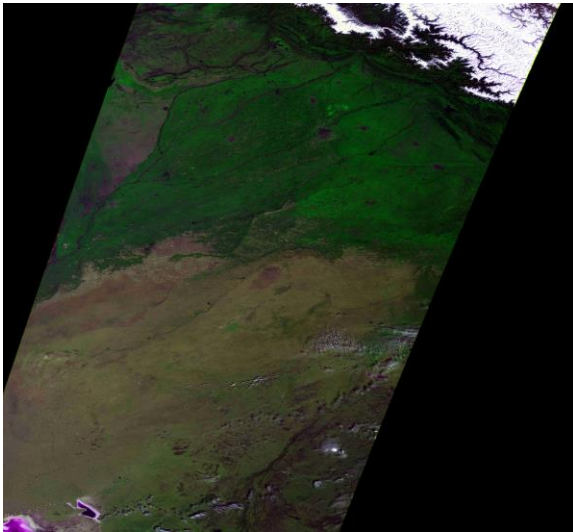


Red = Maisongrande + static clim

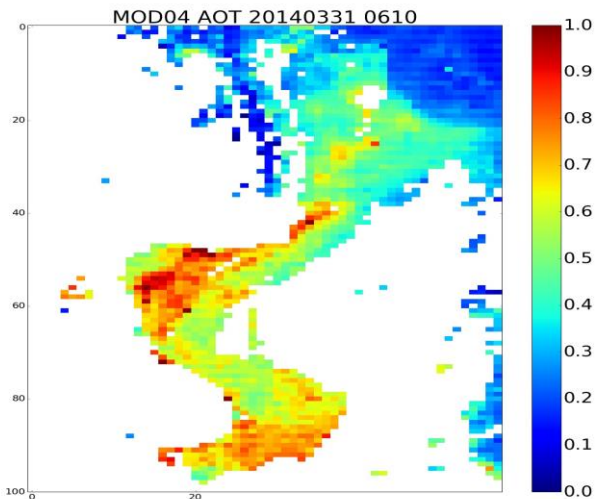


Red = Maisongrande only

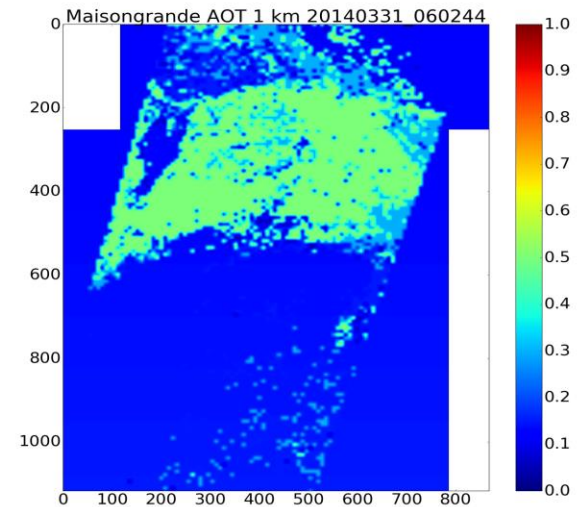
OPERA VS CVB AOT – INDIA 20140331 0602



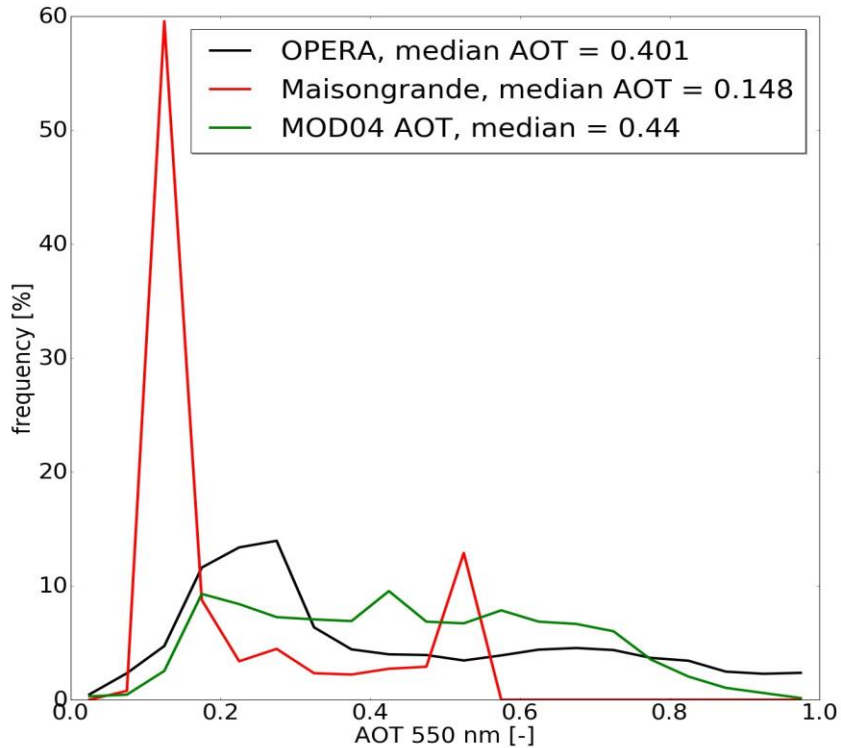
MOD 04 20140331 0610



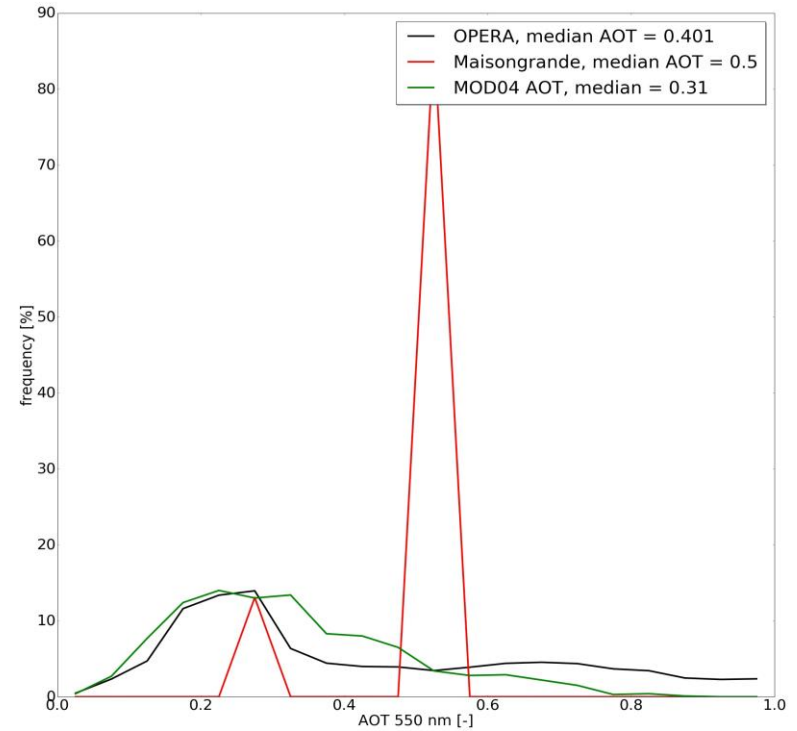
Current AOT



AOT HISTOGRAMS



Red = Maisongrande + static clim



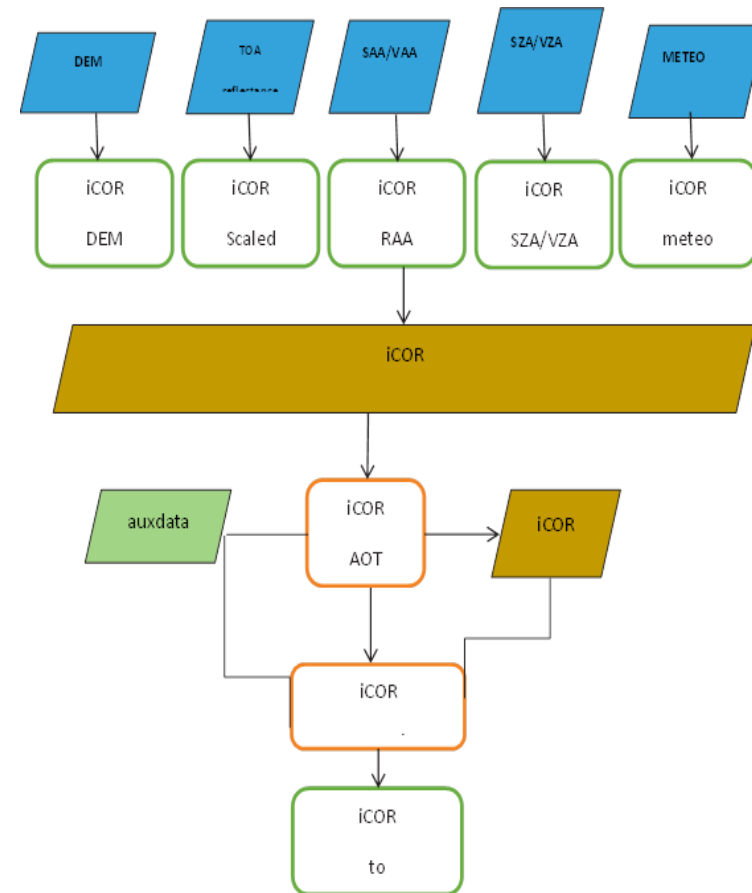
Red = Maisongrande only

Median AERONET AOT Jaipur 0.31

OPERA IMPLEMENTATION IN PROCESSING CHAIN

➤ Interface changes and SW module replacement, a.o.

- Conversion HDF5 → GeoTIFF
- Replacement of current AOT retrieval
- Adjustments of workflow and job codes
- Estimated effort:
 - ✓ ~70 days for **entire AC replacement**
 - ✓ 40 - 50 days for AOT retrieval



SUMMARY OPERA VS CURRENT AOT

- **Validation against AERONET very promising**

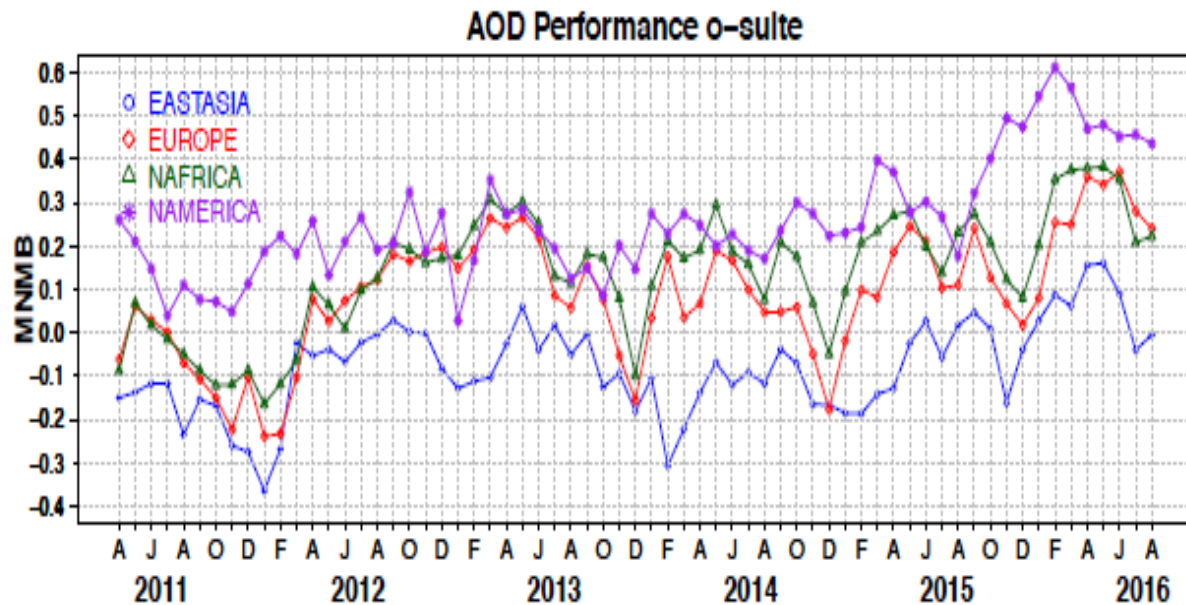
- **OPERA AOT retrieves**
 - Realistic AOT patterns
 - Continuous histograms

- **To Be Done**
 - Process additional segments
 - Assess AOT retrieval replacement impact on TOC reflectance
 - ✓ Comparison with AERONET-based TOC reflectance
 - Assess impact on computation time

CAMS NRT AOT

➤ Previous version: positive AOT bias ~25% wrt AERONET

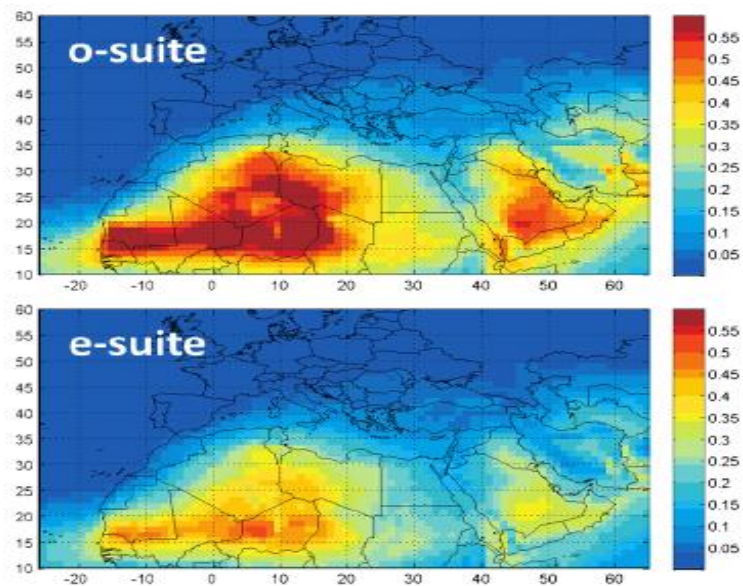
- Largest overestimations over N-America
- AOT overestimation caused by underestimation of aerosol size



CAMS NRT AOT – MODEL UPGRADE

➤ Changes in atmospheric composition

- ~40% more organic aerosol, ~40% less sulphate
- AOT bias decreased from ~30% to 10 - 15%
- Reduced AOT over dust areas
- Product resolution increased to ~40 x 40 km²

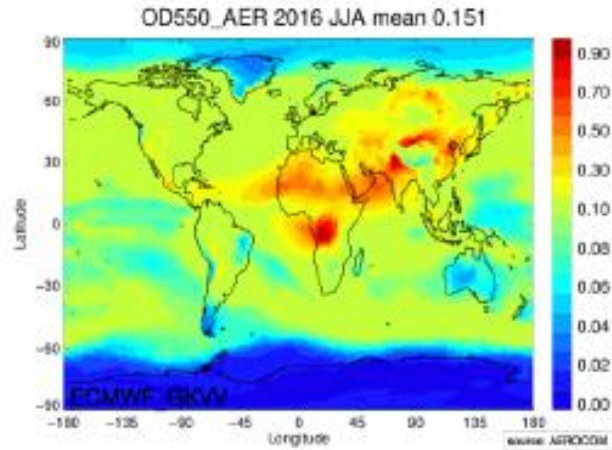


Previous CAMS NRT

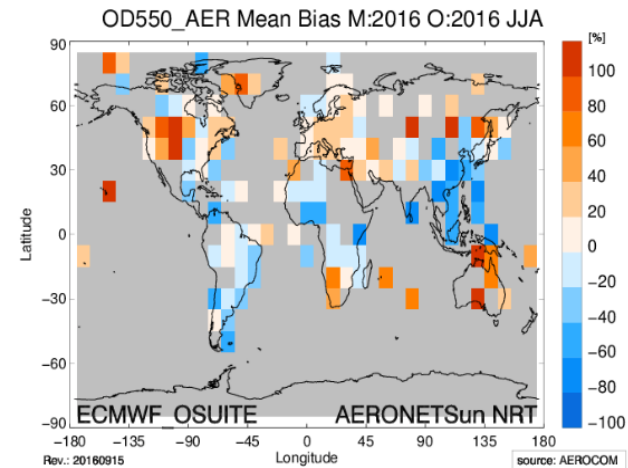
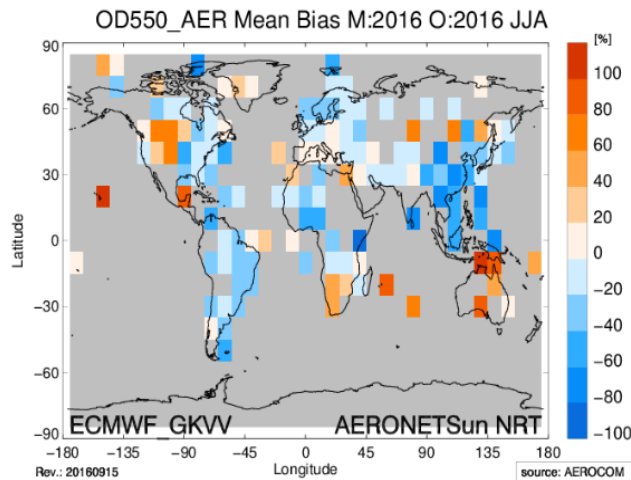
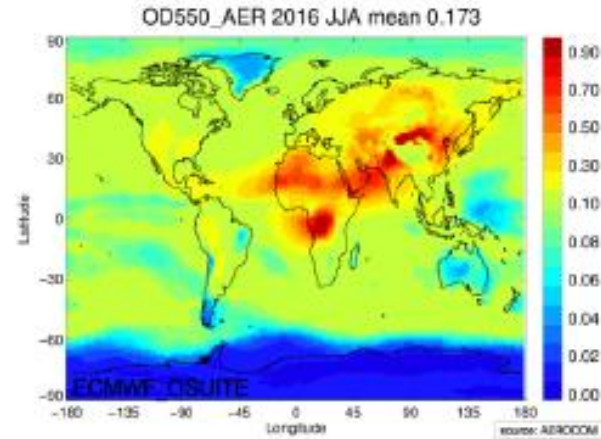
Upgraded CAMS NRT

CAMS NRT AOT – MODEL UPGRADE

Upgraded NRT AOT



Previous NRT AOT



CAMS NRT AOT – DATA AVAILABILITY

- **98 – 99% of NRT forecasts disseminated at initial day**

- **In case of missing NRT forecast → take forecast of previous day**
 - Previous forecasts could be used to 2 – 3 days back
 - Dependent on forecast skill meteorological model

- **To be investigated**
 - Relate CAMS NRT AOT to current and OPERA AOT → TOC reflectance comparison with AERONET-based TOC reflectance
 - Implications for PF workflow → estimate effort

SUMMARY AND FURTHER ACTIONS

➤ OPERA AOT retrieval is good replacement of current AOT dataset

- Better agreement with AERONET AOT
- First results on PROBA-V segments promising

➤ Further research:

- Impact assessment on TOC reflectances: OPERA, CAMS NRT AOT, current AOT vs AERONET TOC
- Assess SMAC vs OPERA using similar AOT input
- Write TN → distribute to QWG