

DSI TPM Projects Status

10.11.2016

X-PreSS Team

- ALOS Project status
- Landsat 1-7 Project status

- **Collection (95% completed):**
 - Three deliveries of data collected.
 - The last one containing also re-generated optical SIP data replacing the already collected ones affected by TESR and multi-SIP issues.
 - 2500 segments still to be received but not yet processed due to missing auxiliary files (TBC if to be recovered or not).
 - GMV has detected that the filename assigned to some auxiliary files (1742 AUX_PAD and 5286 AUX_PPA) is wrong: when an auxiliary file crosses midnight, the date of the stop time is incorrect:
 - Filenames will be fixed directly at the facility. The content is correct.

- Consolidation:**

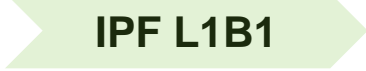



- Consolidation played back after the reception of corrected SIP files due to the multi-SIP issue.
- Preliminary results.

DATASET	AV2_OBS_0P	PSM_OB1_0P	PSM_OB2_0P
Master catalog product number (uniq)	12443	7012	257
Deliver archive product number (showing overl.)	13153	7497	253
No match	831(831)	162(162)	26(26)
Perfect match	11276(0)	6371(0)	214(0)
Partial match	82(78)	0(0)	0(0)
Covering match	136 (4)	439(289)	9(7)
Perfect match pending (using DLS to be reprocess)	10(0)	9(0)	1(0)
Covering match pending (using DLS to be reprocess)	108(1)	31(0)	7(0)
<u>Number of catalogue entry that require attention</u>	<u>914</u>	<u>451</u>	<u>33</u>

• Note1: these results are based on the fact that the DLS that still need to be reprocessed can be successfully reprocessed. Otherwise the number of problematic entries may increase.

• Note2: this analysis doesn't consider the potential orphan products that may not have an entry within the delivered catalogue.

• Note3: the delivered master catalogue contains several duplicated entries and the consequence is that the computation of the archive completeness is not straight forward.

- **IPF L1B1 (scene-based processing)** 
 - Version: 1.4.1 (used during pilot processing), 1.4.4 (integrated)
 - Requirements: 4core, 4 GB RAM, 200 GB ROM, CentOS 6.4/RedHat Enterprise 6)
- **Amalfi L1B1 (scene-based processing)** 
 - Version: 1.4.4 has been delivered after completion of the IPF L1B1 pilot processing
 - Requirements: 1core 500MHz, 1 GB RAM, All OS with Java 6
- **IPF L1C (scene-based processing)** 
 - Version: 4.10
 - Requirements: 4core, 6 GB RAM, 10 GB ROM, RedHat 6.3 (or higher), JavaRE 1.6 (or higher)
- **Amalfi L1C (scene-based processing)** 
 - Version: 1.1.2
 - Requirements: 1core 500MHz, 1 GB RAM, All OS with Java 6

Step 1: IPF L1B1

	AV2_O BS	PSM_O B1	PSM_O B2
# L0	273	9	9
# L0 scenes	10.165	8	8

From 273 to 240 because of 33 L0 have all scene in error



# L1B1 scenes	AV2_O BS	B1	B2
Success	9.506	5.815	644
Warning	3	1.79	9
Error	656	451	123
# L0→L1B1 processable	240	89	123

From 144 to 123 because of 21 L0 have all scene in error

	AV2_O BS	PSM_O B1	PSM_O B2
# L1B1 scenes	9.509	7.612	743
# L0→L1B1 processable	240	89	123



# Amalfi L1B1 scenes	AV2_O BS	PSM_O B1	PSM_O B2
Success	9.508	7.612	743
Warning	1	0	0
Error	0	0	0
# L0→L1B1 processable	240	89	123

	AV2_O BS	PSM_O B1	PSM_O B2
# L1B1 scenes	9.509	7.612	743
# L0→L1B1 processable	240	89	123



# L1C scenes	AV2_O BS	PSM_O B1	PSM_O B2
Success	9.509	7.612	743
Warning	0	0	0
Error	0	0	0
# L0→L1C processable	240	89	123

parsing of log file

	AV2_O BS	PSM_O B1	PSM_O B2
# L1B1 scenes	9.509	7.612	743
# L0→L1B1 processable	240	89	123



# L1C scenes	AV2_O BS	PSM_O B1	PSM_O B2
Success	3.870	1.646	743
Warning	???	???	0
Error	???	???	0
# L0→L1C processable	170	56	123

	AV2_O BS	PSM_O B1	PSM_O B2
# L1C scenes	3.870	1.684	743
# L0→L1C processable	170	56	123



# Amalfi L1C scenes	AV2_O BS	PSM_O B1	PSM_O B2
Success	3.870	1.646	743
Warning	0	0	0
Error	0	0	0
# L0→L1C processable	170	48	123

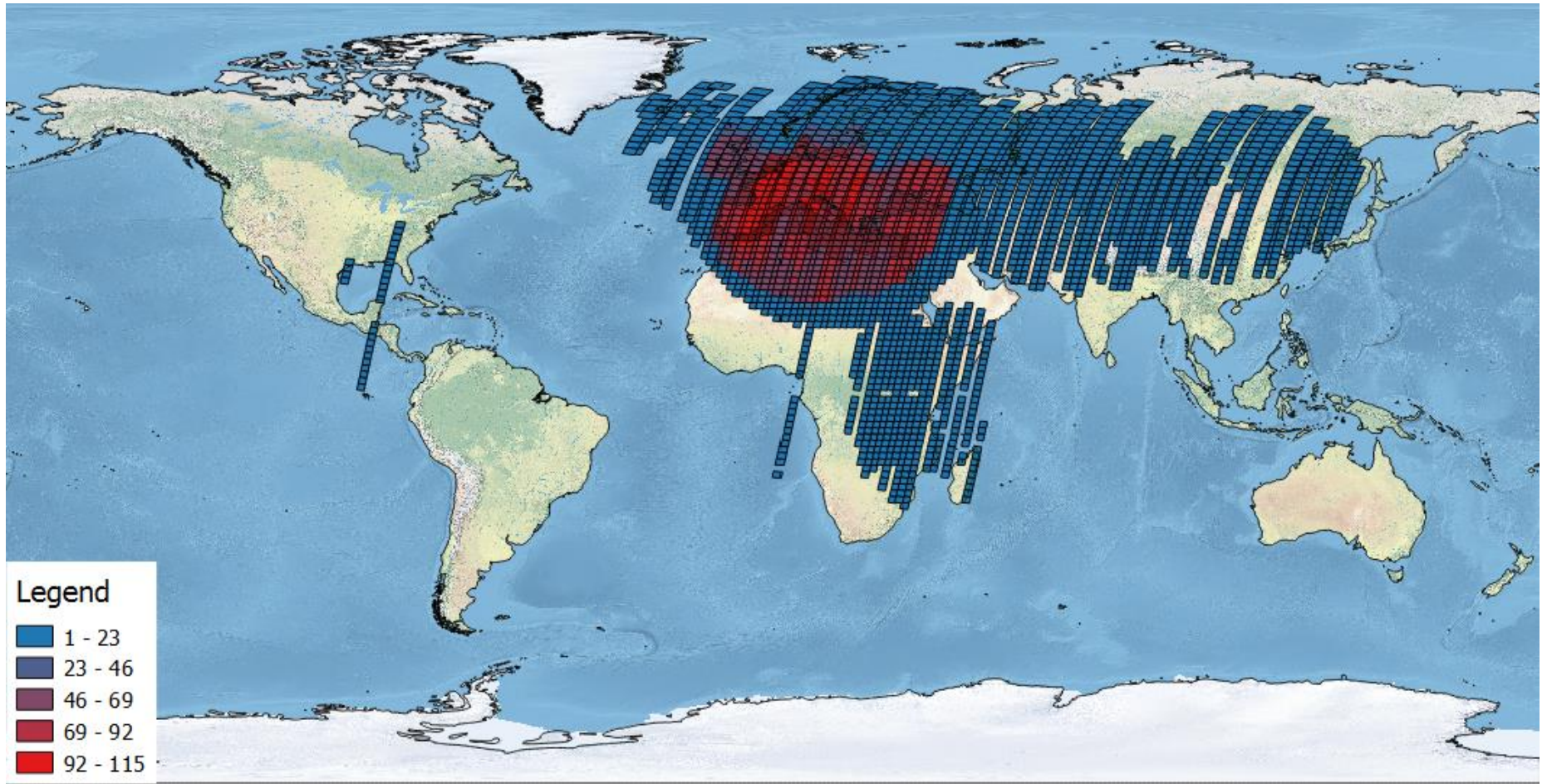
- Pilot processing outputs made available to IDEAS+ for data QC.
- **GREEN LIGHT TO START PROCESSING RECEIVED ON 08.11**
- Processing of L1b + Amalfi L1b to be started this week.
- L1C logging issues to be verified.
- Finalize consolidation activities.

- 1) Reprocessing of ETM/TM Matera data coming from latest two re-transcriptions:
 - ✓ Implementing corrected GENChips DB and DEM.
 - ✓ Products available to IDEAS+ for data QC.

IPF Version (SLAP)	QC Tool (Amalfi)
3.04 Patch3	1.0.12

Sensor	Number of Input L0 products	Output L1	GTC	GEO
TM	2377	49335	41535	7800
ETM	1794	17283	17283	0

- 2) AUX SV re-generation in view of the upcoming MSS archive bulk reprocessing.
- 3) Extended MSS TDS required by IDEAS+/ACS for IPF developing and testing: HD shipped.



TOTAL NUMBER OF GENERATED SCENES: **66618 (GTC + GEO)**

- ✓ Reprocessing of SLAP 3.03 UTM and upside down failed scenes with patched 3.04 (Started this week).
- ✓ Patched SLAP 3.04 “all processed scenes failed” investigation on-going on ACS side.
- ✓ Change all occurrences of ‘OHG’ in Level 1 product to ‘MEX’; the correct station identifier for Chetumal.
- ✓ Bulk reprocessing of the entire MSS archive with SLAP 3.05 using the re-generated AUX SV archive (Q1 2017 TBC).