

# EARTH ONLINE

## NEWSLETTER

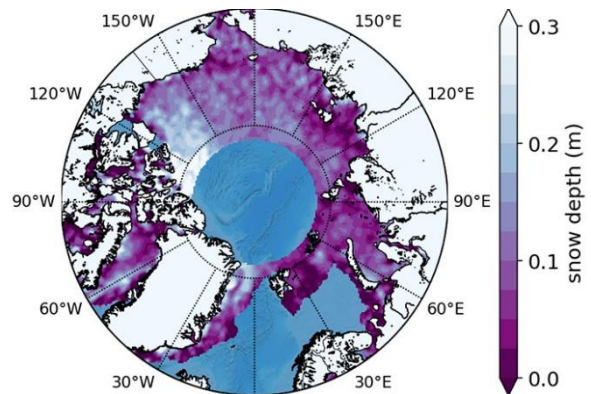
21 January 2022

### Retrieving snow depth over sea ice using dual-frequency altimetric measurements

21 December 2021

A new study from the sea ice team of the Laboratory of Space Geophysical and Oceanographic Studies (LEGOS) in Toulouse has shown that dual-frequency SARAL and CryoSat-2 altimetric measurements can be used to retrieve consistent snow depth data over sea ice in both hemispheres.

[READ MORE](#)



### New interface for submitting EO Campaign data access requests

12 January 2022

ESA offer data from almost 100 airborne campaigns, many of which support calibration and validation of data for ESA satellite missions. A new interface has taken effect for requesting access to EO Campaign data.

[READ MORE](#)



## LATEST DATA NEWS

#### 15 cm HD and 30 cm HD products added to EUSI ESA archive collections

13 January 2022 - Two new products, 15 cm HD and 30 cm HD, have been added to the collections from GeoEye-1, QuickBird-2, and WorldView (1 - 4). Through an agreement with European Space Imaging (EUSI), ESA provides access to data from these missions to researchers upon successful submission and evaluation of a project proposal.

[READ MORE](#)



#### New imaging modes added to PAZ collection

18 January 2022 - Two new imaging modes, Wide ScanSAR and Staring Spotlight, have been added to the PAZ data offering and are now available to users for research and application development following submission of a project proposal subject to evaluation and acceptance by ESA and the data owner.

[READ MORE](#)



Highlight on:

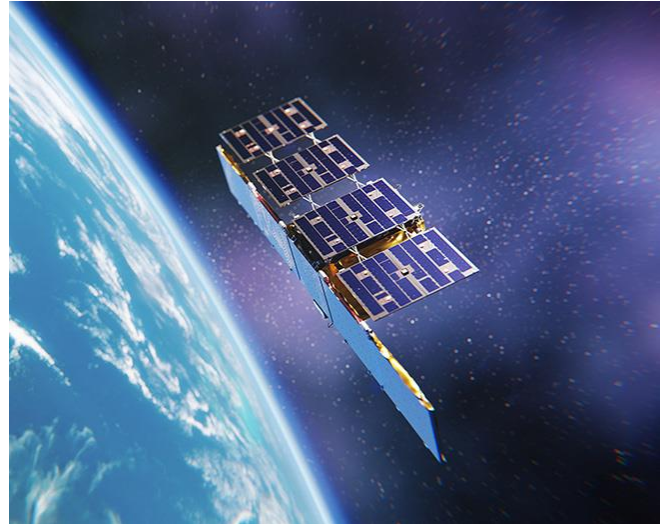
## ICEYE, the world's first SAR New Space Constellation

20 December 2021

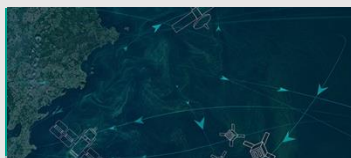
ICEYE is a revolutionary Finnish company that developed and launched the world's first under-100 kilogram synthetic-aperture radar (SAR) satellites into orbit.

ICEYE is a member of ESA's Third Party Mission (TPM) programme, within the framework of ESA's Earthnet Programme, giving scientific researchers and pre-operational Earth Observation-based application developers free access to ICEYE's SAR data.

[READ MORE](#)



## UPCOMING EVENTS



14/02/2022

**Ocean Carbon from Space  
Workshop**

Registration is now open

[READ MORE](#)



23/05/2022

**Living Planet Symposium**

Registration is now open

[READ MORE](#)



20/06/2022

**ACIX-III and CMX-II  
Workshop**

Registration for the exercises  
is open

[READ MORE](#)

### In this Issue

Retrieving snow depth over sea ice  
using dual-frequency altimetric  
measurements

[READ MORE](#)

ICEYE, the world's first SAR New  
Space constellation

[READ MORE](#)

New interface for submitting EO  
Campaign data access requests

[READ MORE](#)

Meet ESA's Swarm Mission  
Manager

[READ MORE](#)

### Discover more

[Data Access](#)  
[Missions](#)  
[News](#)  
[Events](#)  
[Tools](#)



Focus on: Interview

## Meet ESA's Swarm Mission Manager

20 January 2022

Anja Strømme, ESA's Swarm Mission Manager, was recently interviewed. She describes the Swarm constellation in detail and how she enjoys the unique challenges this innovative mission presents.

[READ MORE](#)



### In this Issue

Retrieving snow depth over sea ice using dual-frequency altimetric measurements

[READ MORE](#)

ICEYE, the world's first SAR New Space constellation

[READ MORE](#)

New interface for submitting EO Campaign data access requests

[READ MORE](#)

Meet ESA's Swarm Mission Manager

[READ MORE](#)

Discover more

[Data Access](#)  
[Missions](#)  
[News](#)  
[Events](#)  
[Tools](#)

