

■ ECMWF Report on ERS-2 SAR for May 2003 ■

Title: Report on ERS-2 SAR wave height data.

By: *Saleh Abdalla*

Date: *5 June 2003*

Overview:

On average, about 353 SAR wave mode spectra arrived at ECMWF every 6 hours of which 13.2% have been rejected. Data coverage, which was rather good, can be seen in Figure 1. There was no data reception during the time windows starting from 18:00 on the 16th. till 18:00 on the 19th. of the month. Furthermore, there was significant reduction of data reception during the time windows centred at 00:00 on the 1st., 06:00 on the 3rd., 18:00 on the 12th., 12:00 on the 16th., 00:00 on the 20th., 06:00 on the 24th. and 00:00 on the 26th. of the month (all times are in UTC).

In general, the SAR data are in good agreement with the model.

Wave Height Comparison (bias):

ERS-2 global: -0.021 m

ERS-2 northern hemisphere: 0.081 m

ERS-2 tropics: 0.019 m

ERS-2 southern hemisphere: -0.098 m



Saleh Abdalla

European Centre for Medium Range Weather Forecasts
Shinfield Park, Reading, Berkshire RG2 9AX, England

Telephone: U.K. (0118) 949 9703, International (+44 118) 949 9703

Telex 984 7908 ECMWF G, Telefax (0118) 986 9450, e-mail: abdalla@ecmwf.int

■ ECMWF Report on ERS-2 SAR for May 2003 ■

Remarks:

- The SAR worked normally this month.

Definitions:

Four new integrated parameters are used to compare the SAR and the model spectra. These parameters are:

1. The mean wave period based on the ‘-1th.’ moment (m_{-1}) defined as:

$$T_{-1} = m_{-1} / m_0$$

where m_0 and m_{-1} are the zeroth and the ‘-1th.’ moments of the wave spectrum with the n -th. moment, in general, is defined as:

$$m_n = \int d\theta \int df \cdot f^n \cdot F(f, \theta)$$

F is the wave spectrum in frequency, f , - direction space. The comparison between ECMWF model and SAR mean wave periods for the whole month is given in Figure 7.

2. The wave directional spread defined as:

$$\sigma = \sqrt{2[1 - r_1(f)]}$$

$$r_1(f) = \int df \int d\theta \cdot F(f, \theta) \cdot \cos[\theta - \varphi(f)]$$



Saleh Abdalla

European Centre for Medium Range Weather Forecasts
Shinfield Park, Reading, Berkshire RG2 9AX, England

Telephone: U.K. (0118) 949 9703, International (+44 118) 949 9703

Telex 984 7908 ECMWF G, Telefax (0118) 986 9450, e-mail: abdalla@ecmwf.int

■ ECMWF Report on ERS-2 SAR for May 2003 ■

$$\varphi(f) = \operatorname{atan} \left\{ \frac{[\int d\theta \cdot F(f, \theta) \cdot \sin(\theta)]}{[\int d\theta \cdot F(f, \theta) \cdot \cos(\theta)]} \right\}$$

The comparison between ECMWF model and SAR wave directional spread values for the whole month is given in Figure 8.

3. The mean wave propagation direction defined as:

$$\varphi = \operatorname{atan} \left\{ \frac{[\int df \int d\theta \cdot F(f, \theta) \cdot \sin(\theta)]}{[\int df \int d\theta \cdot F(f, \theta) \cdot \cos(\theta)]} \right\}$$

The comparison between ECMWF model and SAR mean wave propagation directions for the whole month is given in Figure 9.

4. The spectral peakedness parameter of Goda (Q_p) defined as:

$$Q_p = 2m_0^{-2} \int d\theta \int df \cdot f \cdot F^2(f, \theta)$$

The comparison between ECMWF model and SAR spectral peakedness (or roughly, spectral narrowness) values for the whole month is given in Figure 10.



■ ECMWF Report on ERS-2 SAR for May 2003 ■

Figure captions:

Figure 1: Time series of data reception for ERS-2 Altimeter data for May 2003.

Figure 2: Comparison of ECMWF wave height results with ERS-2 SAR wave height data for May 2003 (global).

Figure 3: Comparison of ECMWF wave height results with ERS-2 SAR wave height data for May 2003 (northern hemisphere)

Figure 4: Comparison of ECMWF wave height results with ERS-2 SAR wave height data for May 2003 (tropics)

Figure 5: Comparison of ECMWF wave height results with ERS-2 SAR wave height data for May 2003 (southern hemisphere)

Figure 6: ERS-2 SAR wave heights: Timeseries of bias (ERS-2 - model) and scatter index (SI).

Figure 7: Comparison of ECMWF mean wave periods with ERS-2 SAR mean wave periods for May 2003 (global).

Figure 8: Comparison of ECMWF wave directional spread with that of ERS-2 SAR for May 2003 (global).

Figure 9: Comparison of ECMWF mean wave directions with those of ERS-2 SAR for May 2003 (global).

Figure 10: Comparison of ECMWF wave peakedness factor with that of ERS-2 SAR for May 2003 (global).

Figure 11: ERS-2 SAR wave heights: Timeseries of daily bias (ERS-2 - model) for the past year.

Figure 12: ERS-2 SAR wave heights: Timeseries of daily root mean square difference (RMSE) for the past year.

Figure 13: Comparison between SAR and ECMWF “2-second wave-period interval equivalent wave heights” for May 2003 (global).

Figure 14: Comparison between SAR and ECMWF “2-second wave-period interval equivalent wave heights” for May 2003 (n. hem.).

Figure 15: Comparison between SAR and ECMWF “2-second wave-period interval equivalent wave heights” for May 2003 (tropics).

Figure 14: Comparison between SAR and ECMWF “2-second wave-period interval equivalent wave heights” for May 2003 (s. hem.).

■
Saleh Abdalla

European Centre for Medium Range Weather Forecasts
Shinfield Park, Reading, Berkshire RG2 9AX, England
Telephone: U.K. (0118) 949 9703, International (+44 118) 949 9703
Telex 984 7908 ECMWF G, Telefax (0118) 986 9450, e-mail: abdalla@ecmwf.int

■ ECMWF Report on ERS-2 SAR for May 2003 ■

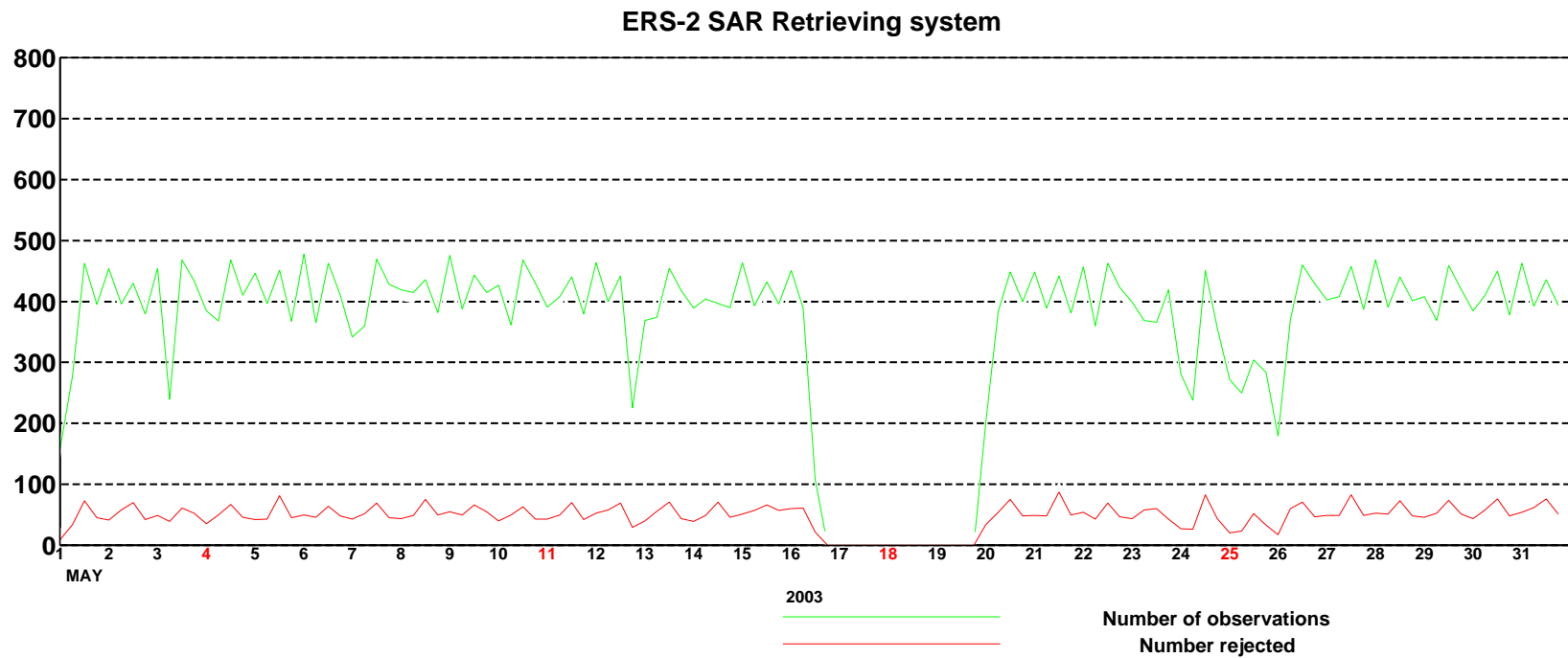


Figure 1: Time series of data reception for ERS-2 SAR wave mode spectra for May 2003

■
Saleh Abdalla

European Centre for Medium Range Weather Forecasts
Shinfield Park, Reading, Berkshire RG2 9AX, England
Telephone: U.K. (0118) 949 9703, International (+44 118) 949 9703
Telex 984 7908 ECMWF G, Telefax (0118) 986 9450, e-mail: abdalla@ecmwf.int

■ ECMWF Report on ERS-2 SAR for May 2003 ■

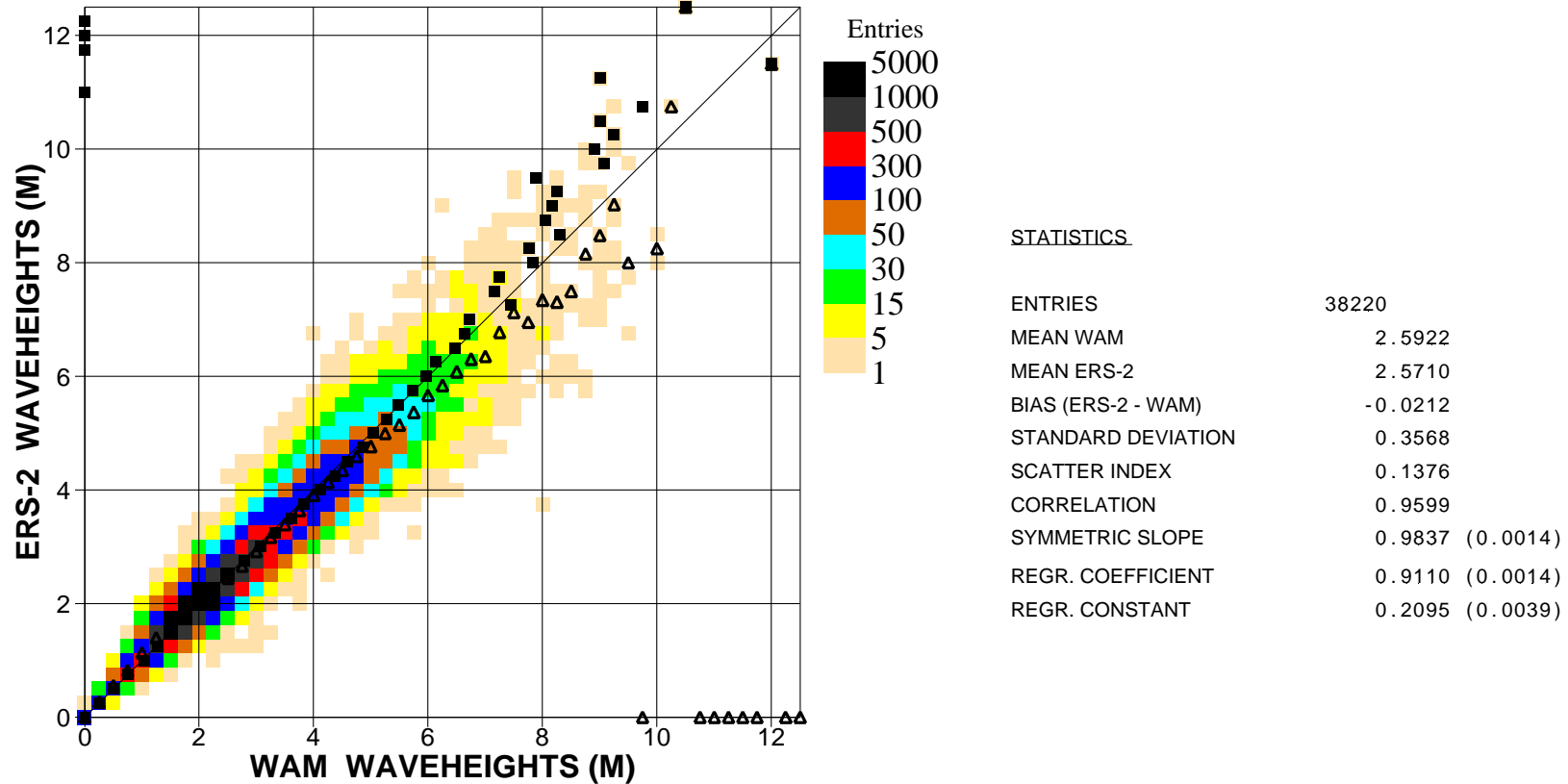


Figure 2: Comparison of ECMWF wave height results with ERS2 SAR wave height data for May 2003 (global)

■
Saleh Abdalla

European Centre for Medium Range Weather Forecasts
Shinfield Park, Reading, Berkshire RG2 9AX, England
Telephone: U.K. (0118) 949 9703, International (+44 118) 949 9703
Telex 984 7908 ECMWF G, Telefax (0118) 986 9450, e-mail: abdalla@ecmwf.int

ECMWF Report on ERS-2 SAR for May 2003

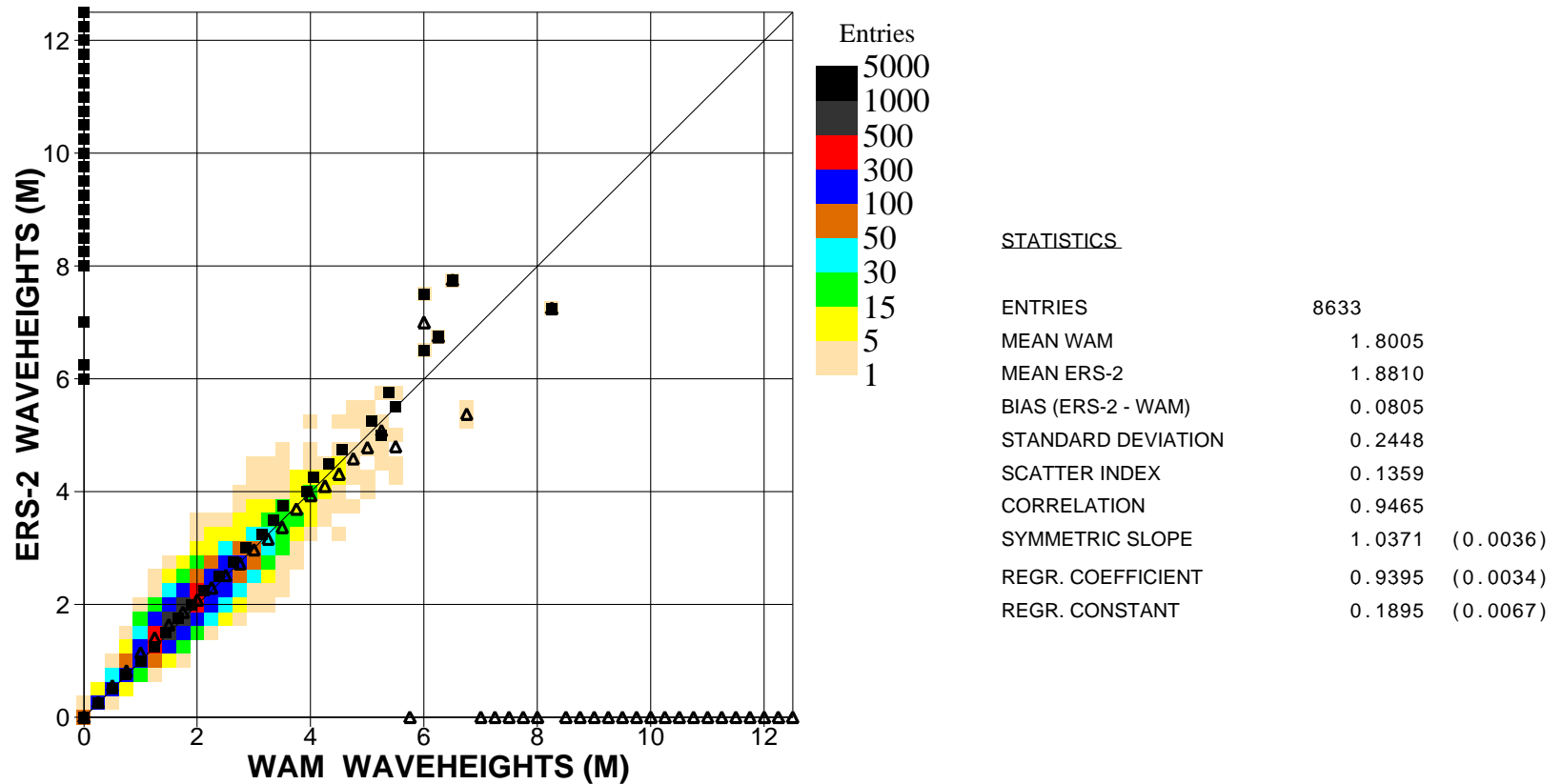


Figure 3: Comparison of ECMWF wave height results with ERS2 SAR wave height data for May 2003 (n.hem.)

Saleh Abdalla

European Centre for Medium Range Weather Forecasts
 Shinfield Park, Reading, Berkshire RG2 9AX, England
 Telephone: U.K. (0118) 949 9703, International (+44 118) 949 9703
 Telex 984 7908 ECMWF G, Telefax (0118) 986 9450, e-mail: abdalla@ecmwf.int

ECMWF Report on ERS-2 SAR for May 2003

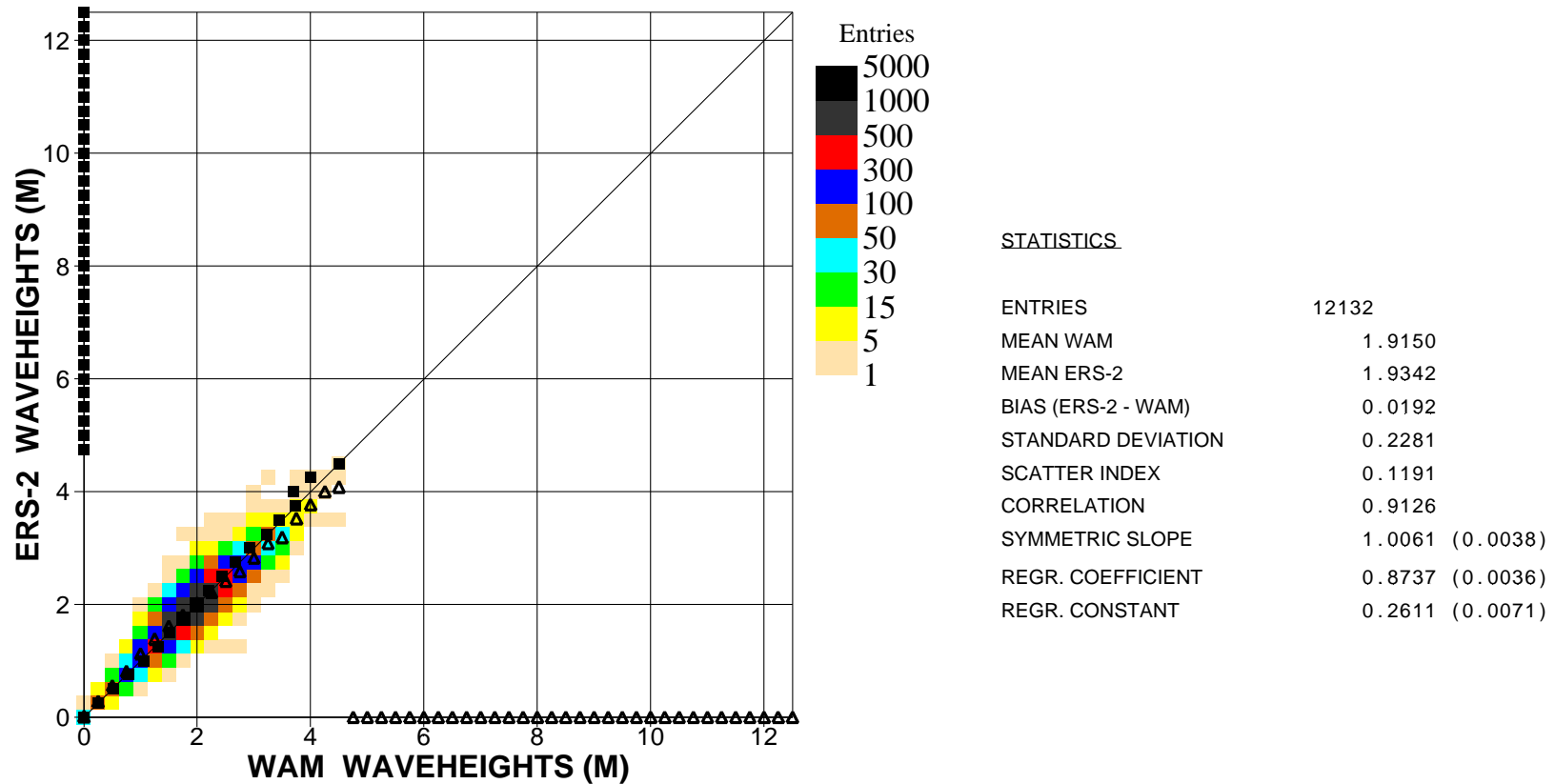


Figure 4: Comparison of ECMWF wave height results with ERS2 SAR wave height data for May 2003 (tropics)

Saleh Abdalla

European Centre for Medium Range Weather Forecasts
 Shinfield Park, Reading, Berkshire RG2 9AX, England
 Telephone: U.K. (0118) 949 9703, International (+44 118) 949 9703
 Telex 984 7908 ECMWF G, Telefax (0118) 986 9450, e-mail: abdalla@ecmwf.int

ECMWF Report on ERS-2 SAR for May 2003

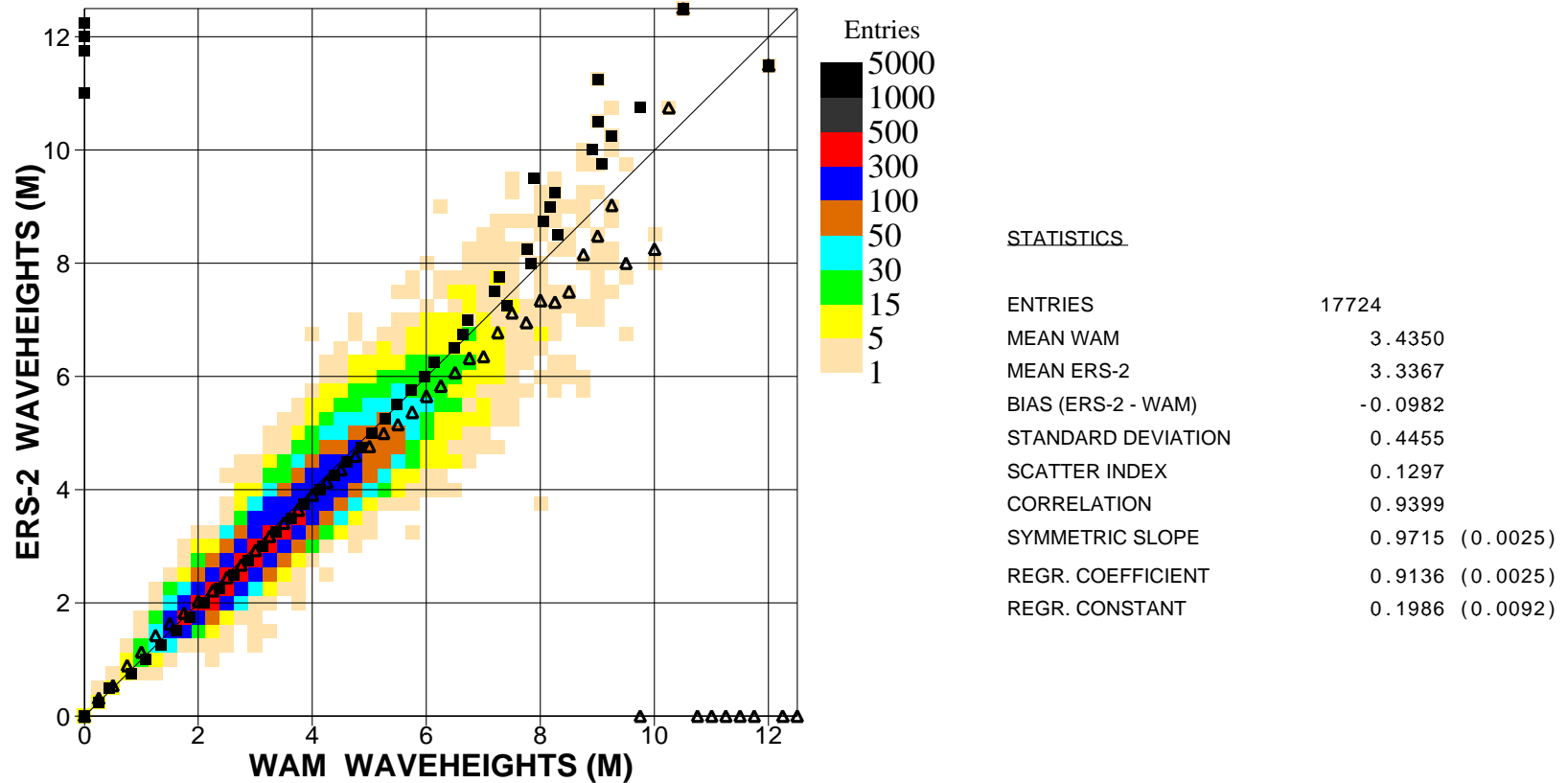


Figure 5: Comparison of ECMWF wave height results with ERS2 SAR wave height data for May 2003 (s.hem.)

Saleh Abdalla

European Centre for Medium Range Weather Forecasts
 Shinfield Park, Reading, Berkshire RG2 9AX, England
 Telephone: U.K. (0118) 949 9703, International (+44 118) 949 9703
 Telex 984 7908 ECMWF G, Telefax (0118) 986 9450, e-mail: abdalla@ecmwf.int

ECMWF Report on ERS-2 SAR for May 2003

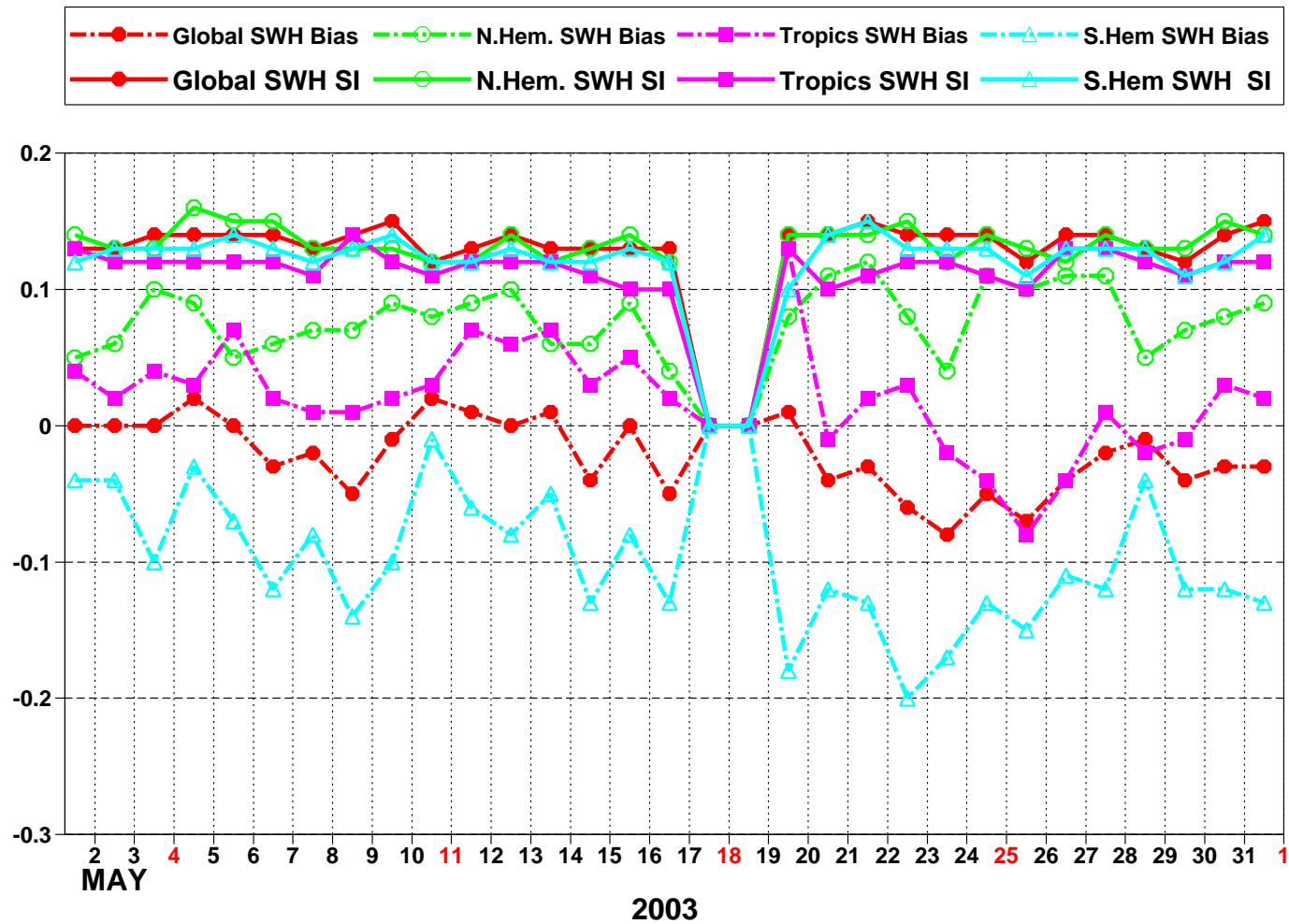


Figure 6: ERS-2 SAR wave heights: Timeseries of bias (ERS-2 - model) and scatter index (SI)

■ ECMWF Report on ERS-2 SAR for May 2003 ■

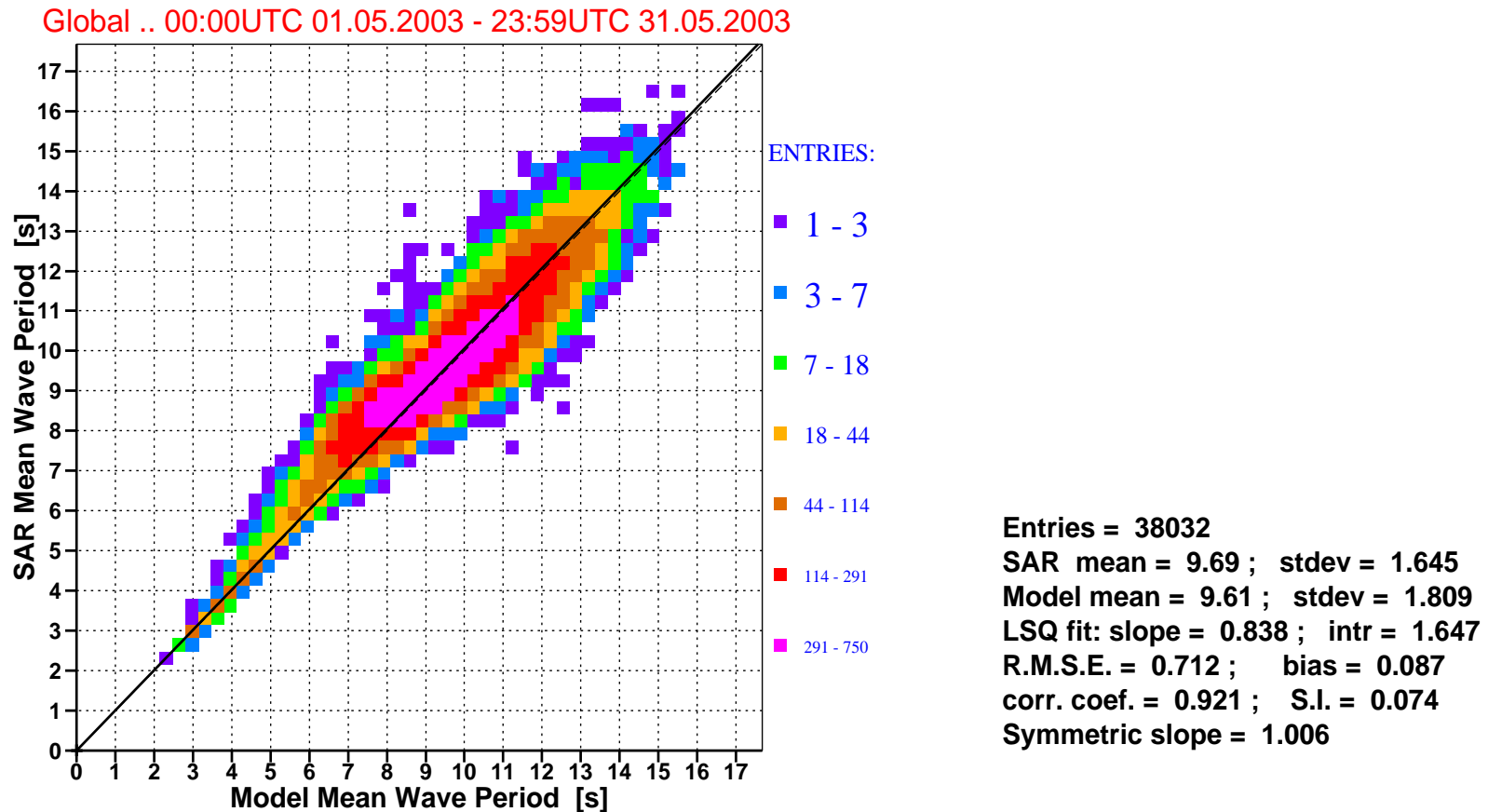


Figure 7: Comparison of ECMWF mean wave periods with ERS-2 SAR mean wave periods for may 2003 (global).

■
Saleh Abdalla

European Centre for Medium Range Weather Forecasts
Shinfield Park, Reading, Berkshire RG2 9AX, England
Telephone: U.K. (0118) 949 9703, International (+44 118) 949 9703
Telex 984 7908 ECMWF G, Telefax (0118) 986 9450, e-mail: abdalla@ecmwf.int

■ ECMWF Report on ERS-2 SAR for May 2003 ■

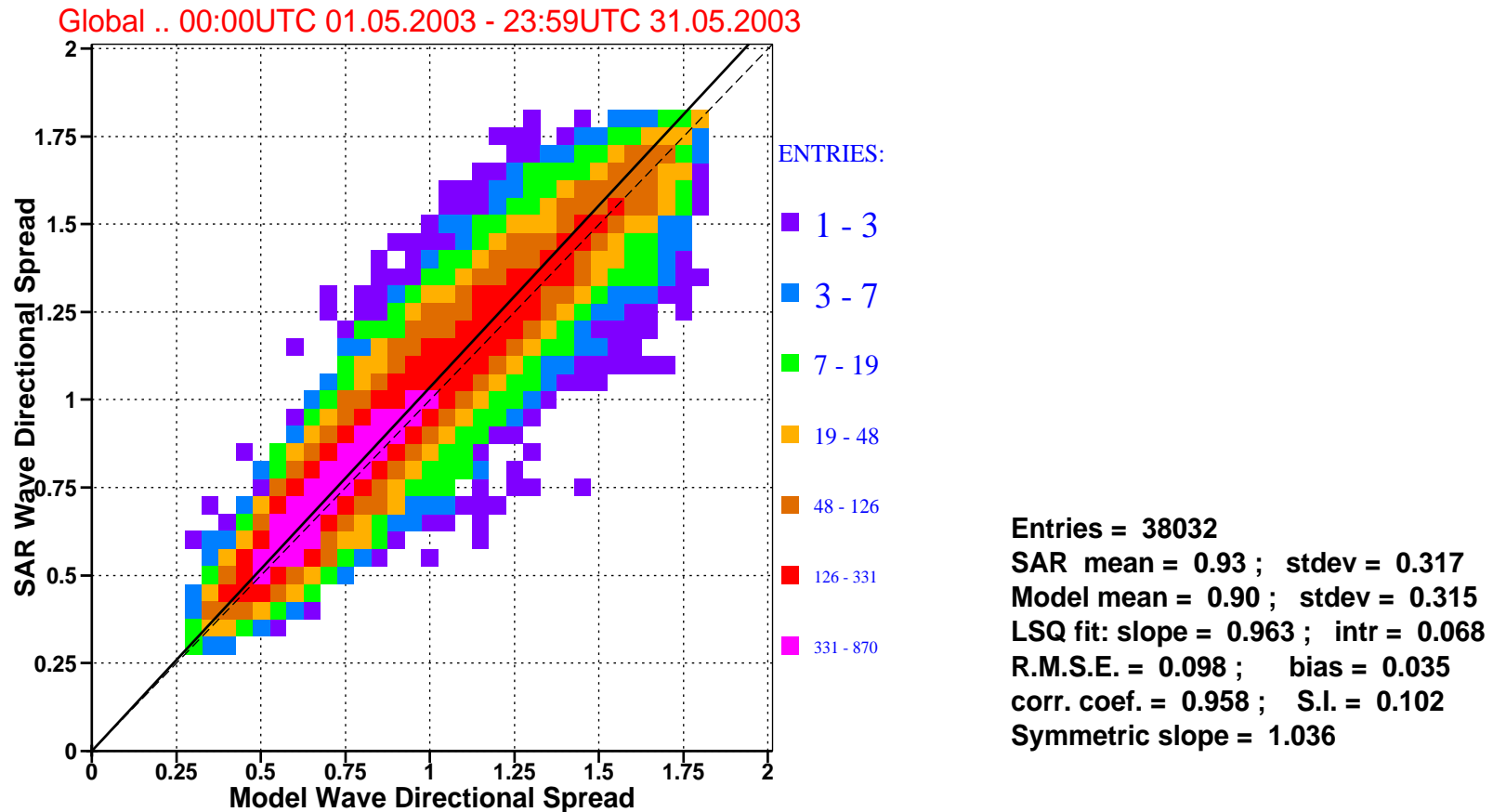


Figure 8: Comparison of ECMWF wave directional spread with that of ERS-2 SAR for may 2003 (global).

■
Saleh Abdalla

European Centre for Medium Range Weather Forecasts
Shinfield Park, Reading, Berkshire RG2 9AX, England
Telephone: U.K. (0118) 949 9703, International (+44 118) 949 9703
Telex 984 7908 ECMWF G, Telefax (0118) 986 9450, e-mail: abdalla@ecmwf.int

■ ECMWF Report on ERS-2 SAR for May 2003 ■

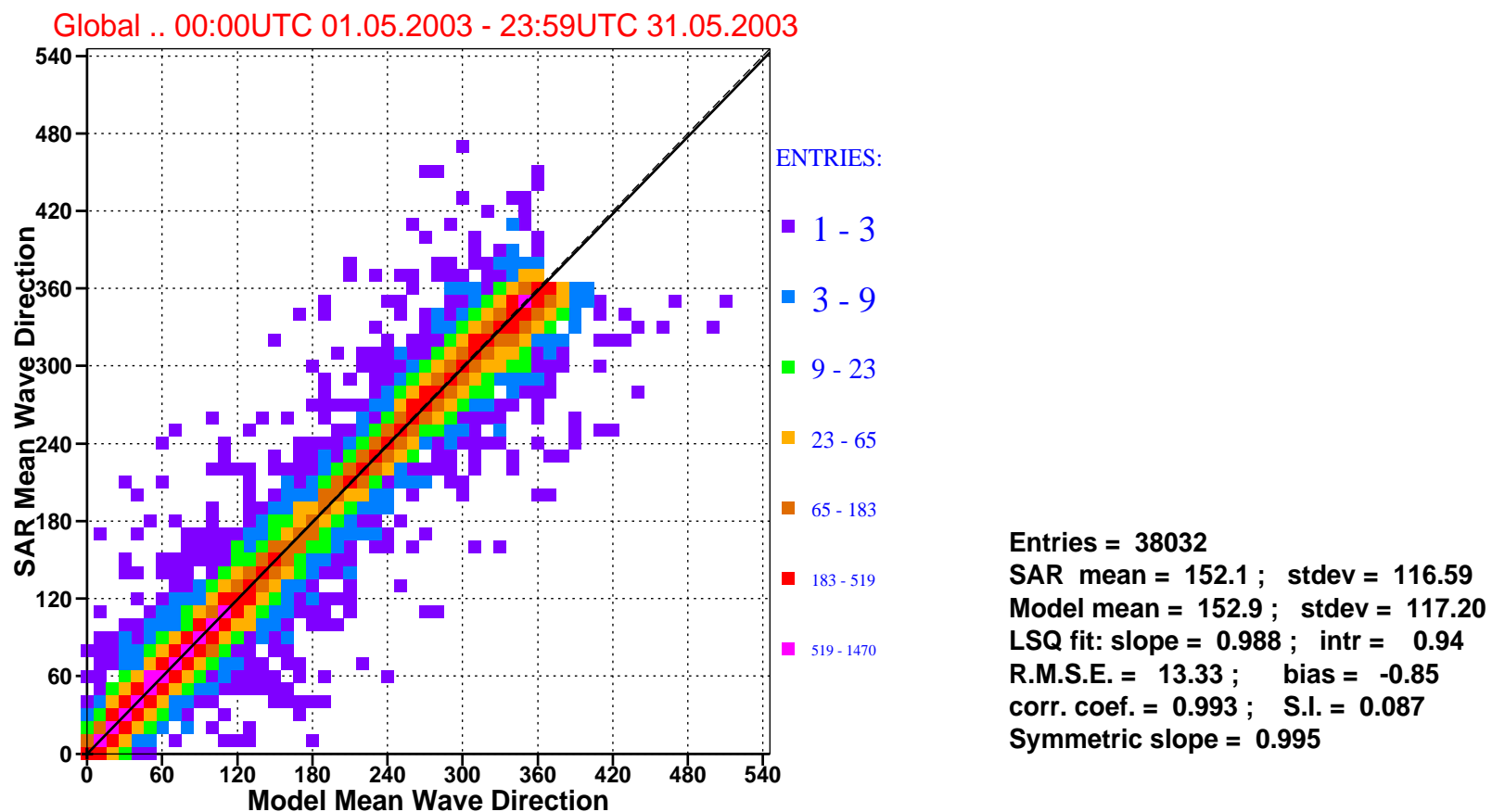


Figure 9: Comparison of ECMWF mean wave directions with that of ERS-2 SAR for may 2003 (global).

■
 Saleh Abdalla

European Centre for Medium Range Weather Forecasts
 Shinfield Park, Reading, Berkshire RG2 9AX, England
 Telephone: U.K. (0118) 949 9703, International (+44 118) 949 9703
 Telex 984 7908 ECMWF G, Telefax (0118) 986 9450, e-mail: abdalla@ecmwf.int

■ ECMWF Report on ERS-2 SAR for May 2003 ■

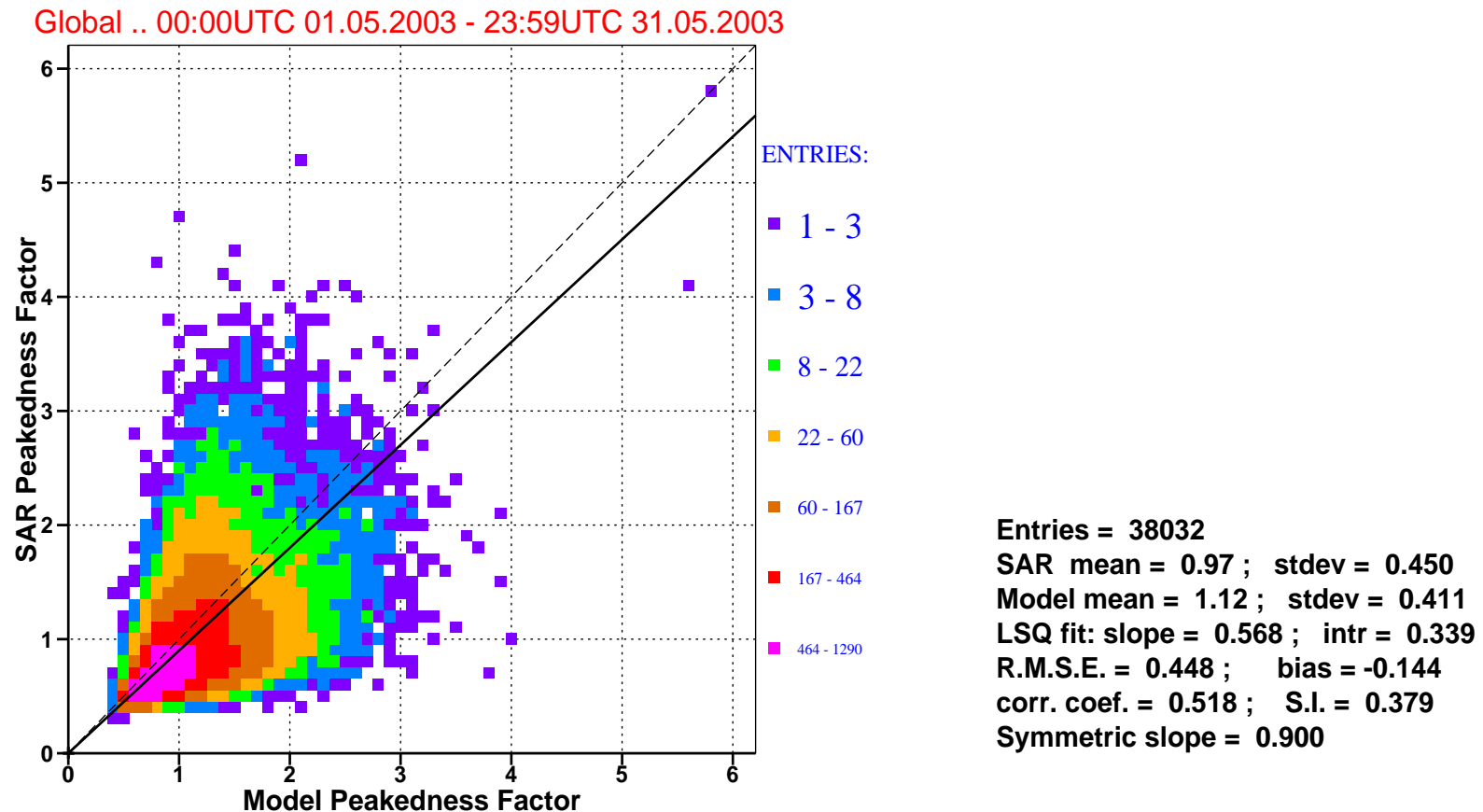


Figure 10: : Comparison of ECMWF wave peakedness factor with that of ERS-2 SAR for may 2003 (global).

■
 Saleh Abdalla

European Centre for Medium Range Weather Forecasts
 Shinfield Park, Reading, Berkshire RG2 9AX, England
 Telephone: U.K. (0118) 949 9703, International (+44 118) 949 9703
 Telex 984 7908 ECMWF G, Telefax (0118) 986 9450, e-mail: abdalla@ecmwf.int

■ ECMWF Report on ERS-2 SAR for May 2003 ■

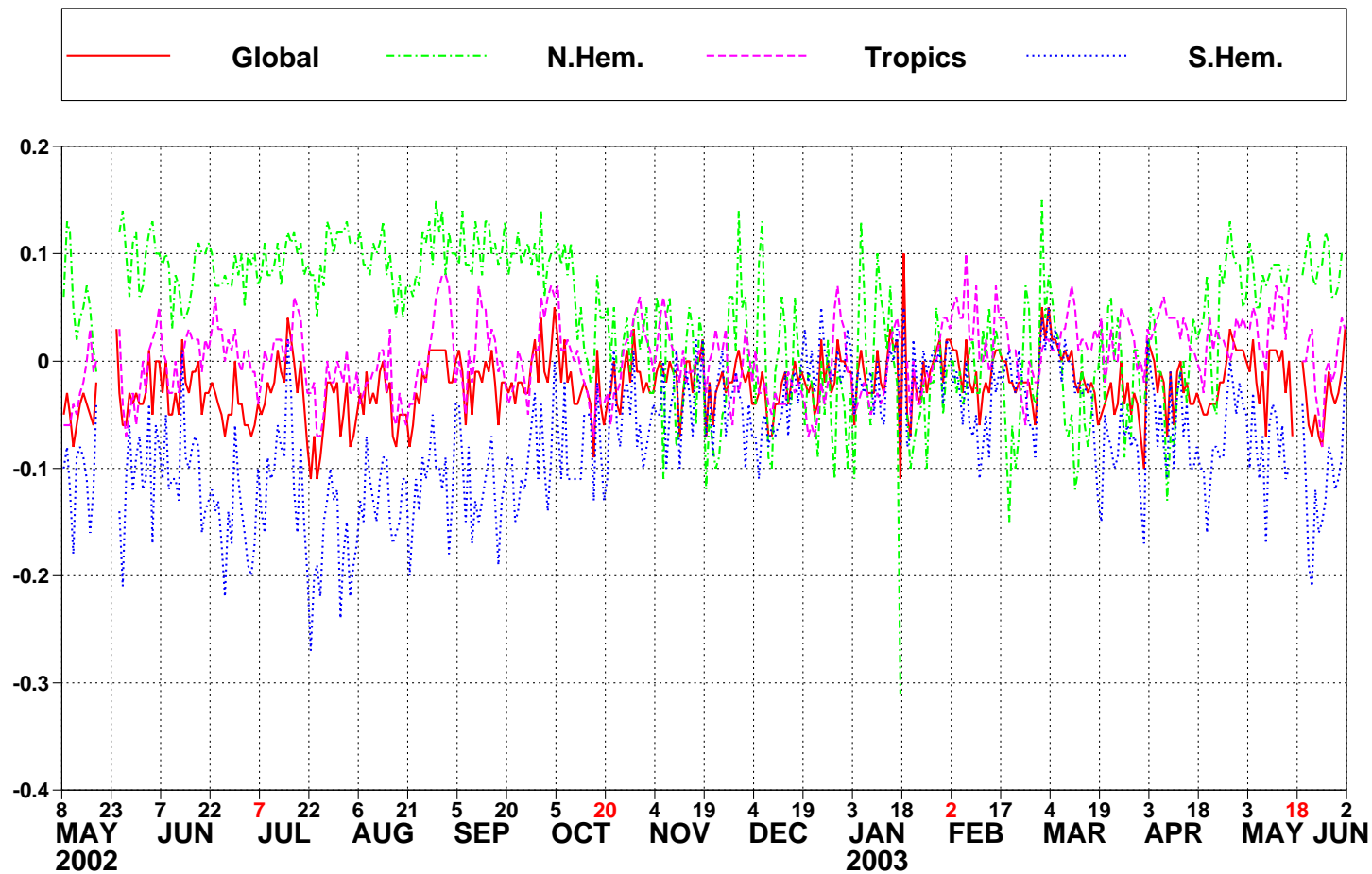


Figure 11: ERS-2 SAR wave heights: Timeseries of daily bias (ERS-2 - model) for the past year.

■
Saleh Abdalla

European Centre for Medium Range Weather Forecasts
Shinfield Park, Reading, Berkshire RG2 9AX, England
Telephone: U.K. (0118) 949 9703, International (+44 118) 949 9703
Telex 984 7908 ECMWF G, Telefax (0118) 986 9450, e-mail: abdalla@ecmwf.int

■ ECMWF Report on ERS-2 SAR for May 2003 ■

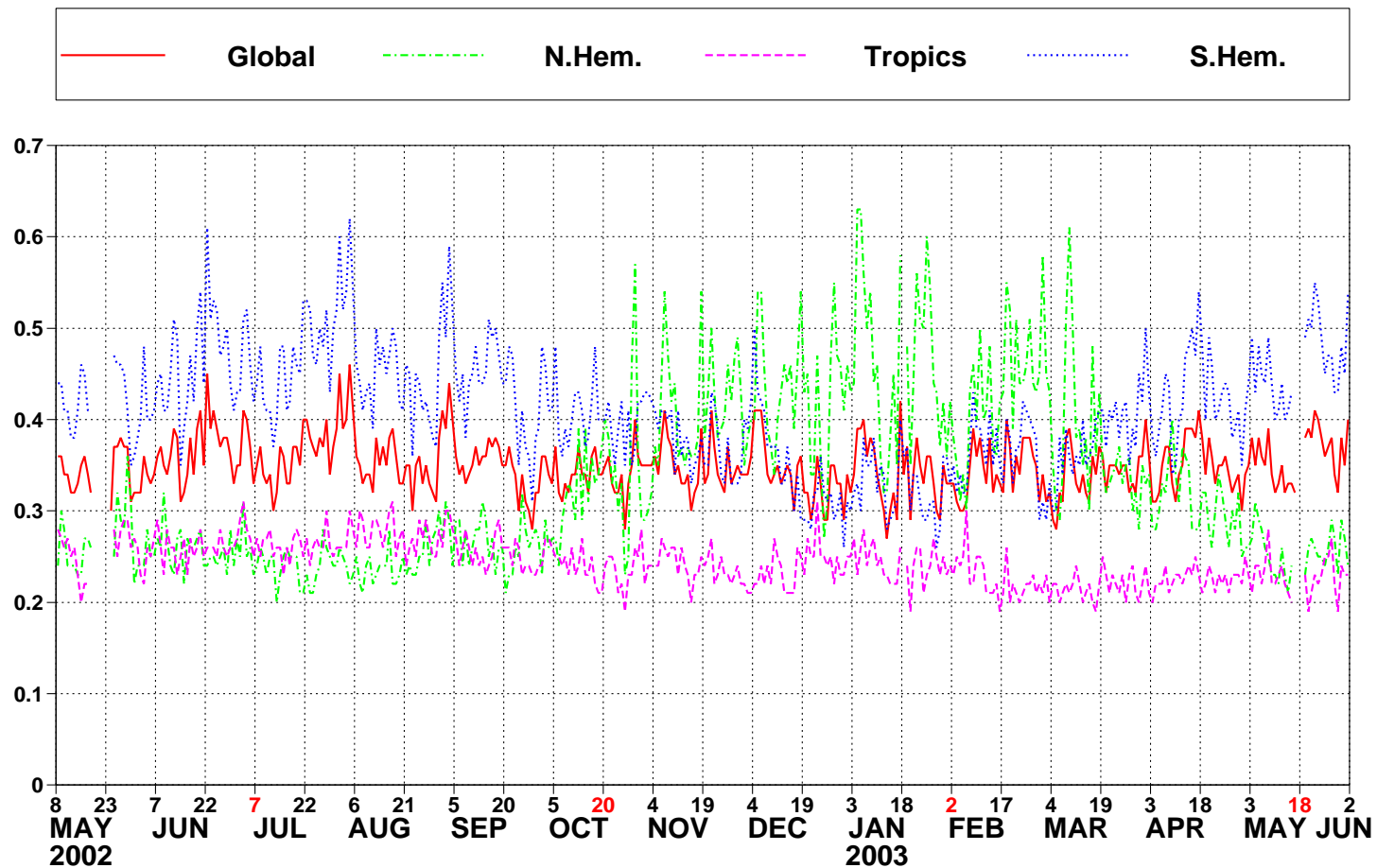


Figure 12: ERS-2 SAR wave heights: Timeseries of daily root mean square difference (RMSE) for the past year.



Saleh Abdalla

European Centre for Medium Range Weather Forecasts
Shinfield Park, Reading, Berkshire RG2 9AX, England

Telephone: U.K. (0118) 949 9703, International (+44 118) 949 9703

Telex 984 7908 ECMWF G, Telefax (0118) 986 9450, e-mail: abdalla@ecmwf.int

■ ECMWF Report on ERS-2 SAR for May 2003 ■

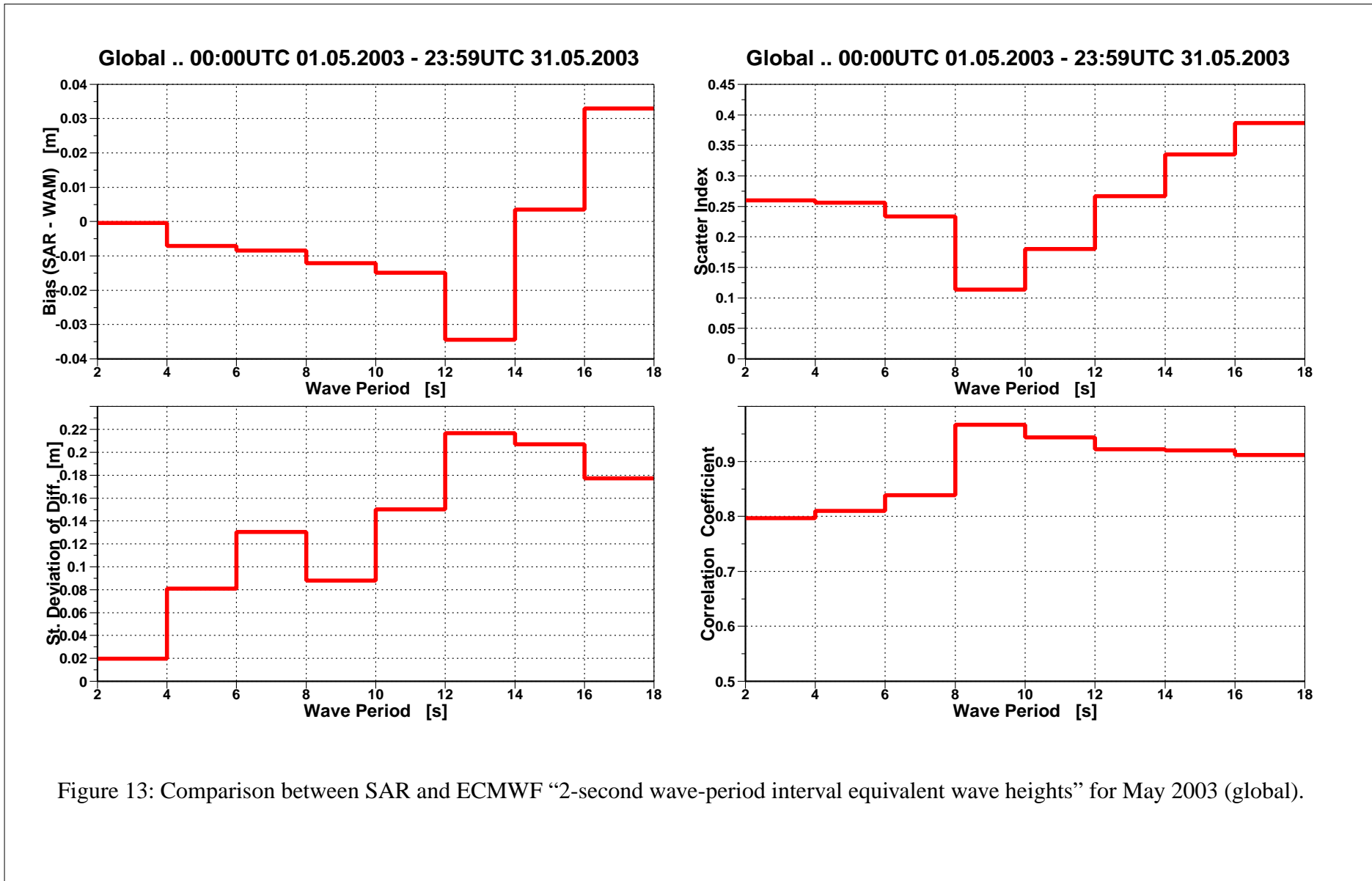


Figure 13: Comparison between SAR and ECMWF “2-second wave-period interval equivalent wave heights” for May 2003 (global).

■
Saleh Abdalla

European Centre for Medium Range Weather Forecasts
Shinfield Park, Reading, Berkshire RG2 9AX, England
Telephone: U.K. (0118) 949 9703, International (+44 118) 949 9703
Telex 984 7908 ECMWF G, Telefax (0118) 986 9450, e-mail: abdalla@ecmwf.int

■ ECMWF Report on ERS-2 SAR for May 2003 ■

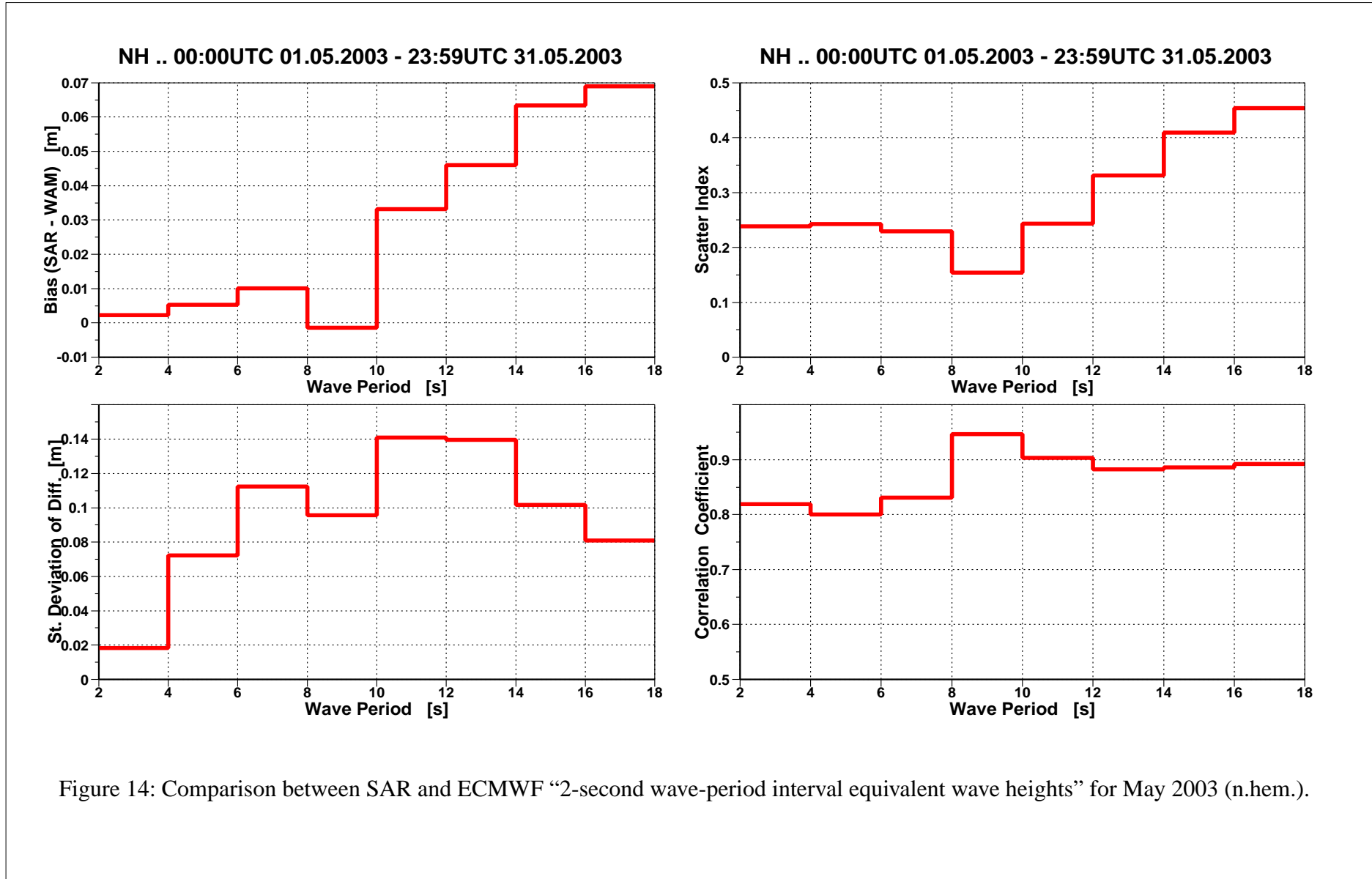


Figure 14: Comparison between SAR and ECMWF “2-second wave-period interval equivalent wave heights” for May 2003 (n.hem.).

■ ECMWF Report on ERS-2 SAR for May 2003 ■

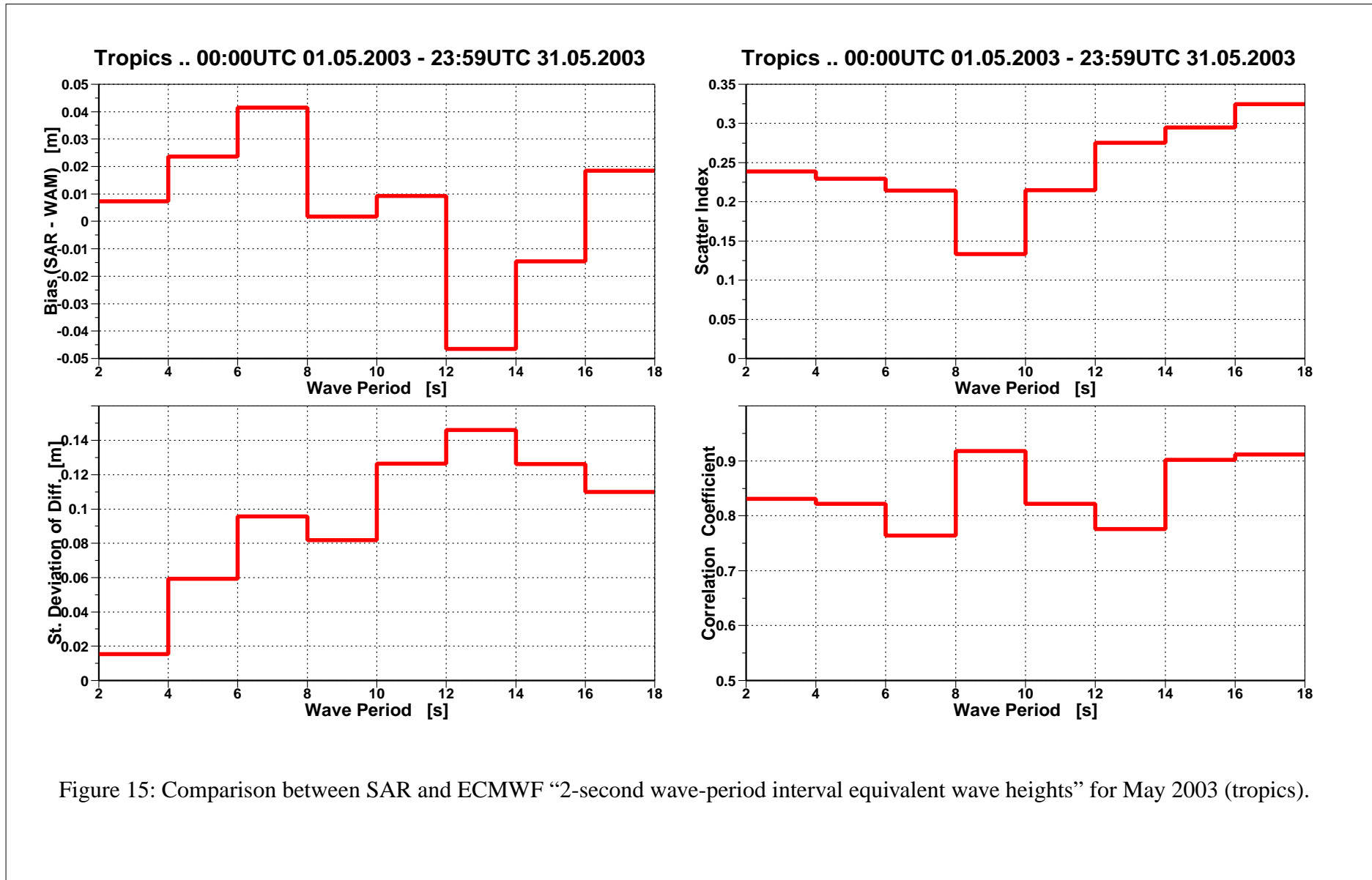


Figure 15: Comparison between SAR and ECMWF “2-second wave-period interval equivalent wave heights” for May 2003 (tropics).

■
Saleh Abdalla

European Centre for Medium Range Weather Forecasts
Shinfield Park, Reading, Berkshire RG2 9AX, England
Telephone: U.K. (0118) 949 9703, International (+44 118) 949 9703
Telex 984 7908 ECMWF G, Telefax (0118) 986 9450, e-mail: abdalla@ecmwf.int

■ ECMWF Report on ERS-2 SAR for May 2003 ■

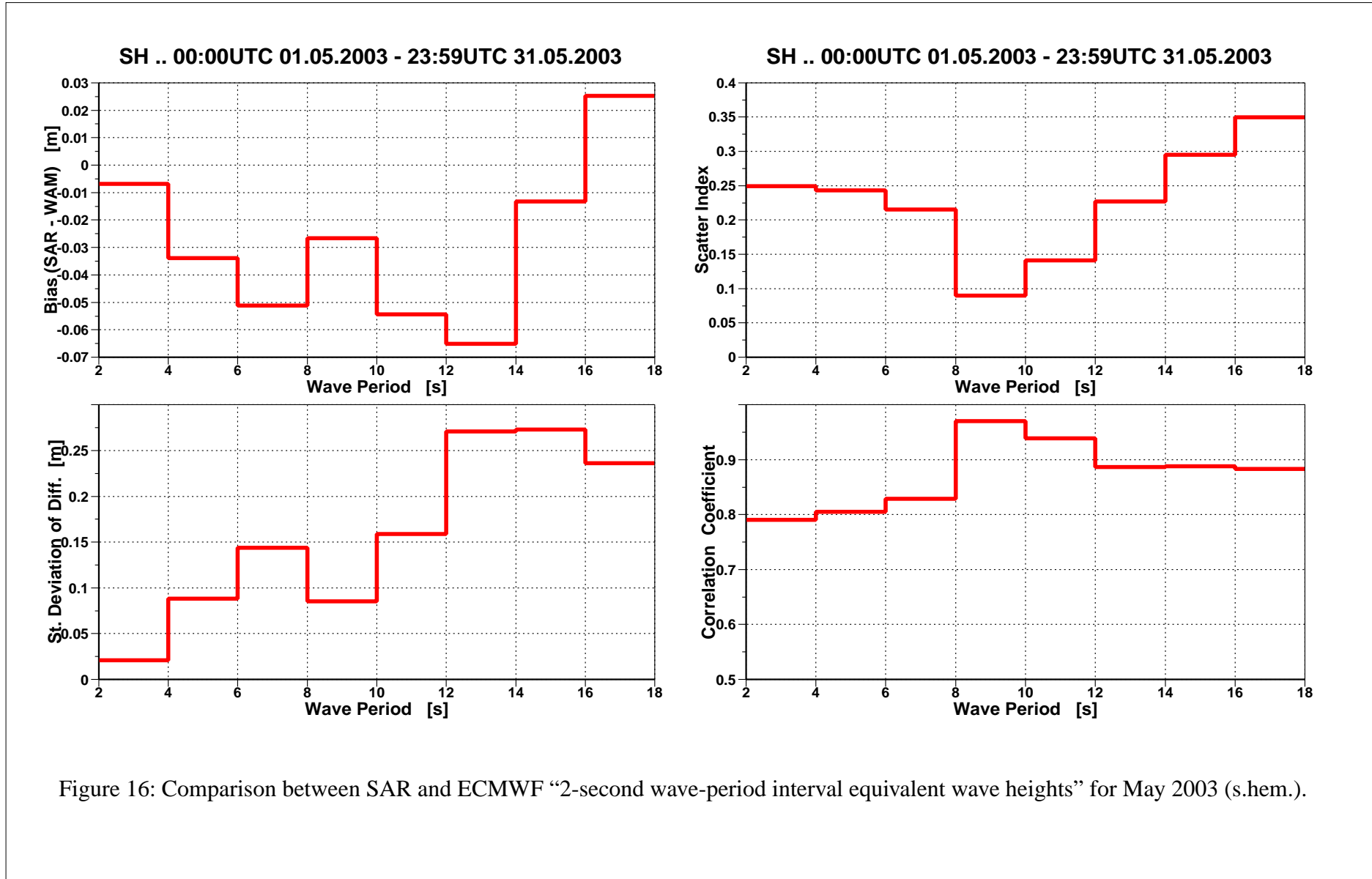


Figure 16: Comparison between SAR and ECMWF “2-second wave-period interval equivalent wave heights” for May 2003 (s.hem.).

