

■ ECMWF Report on ERS-2 SAR for December 2002 ■

Title: Report on ERS-2 SAR wave height data.

By: *Saleh Abdalla*

Date: *9 January 2003*

Overview:

On average, about 415 SAR wave mode spectra arrived at ECMWF every 6-hour window of which 16.8% have been rejected. Data coverage, which was rather good, can be seen in Figure 1. There was no data at time windows centred at 00:00 UTC on the 10th., at 06:00 and 12:00 UTC on the 20th. and at 12:00 UTC on the 29th. of the month. There was significant reduction in data reception at the time window centred at 00:00 on the 5th. of the month.

In general, the SAR data are in good agreement with the model.

Wave Height Comparison (bias):

ERS-2 global: -0.023 m

ERS-2 northern hemisphere: -0.009 m

ERS-2 tropics: -0.019 m

ERS-2 southern hemisphere: -0.032 m



Saleh Abdalla

European Centre for Medium Range Weather Forecasts

Shinfield Park, Reading, Berkshire RG2 9AX, England

Telephone: U.K. (0118) 949 9703, International (+44 118) 949 9703

Telex 984 7908 ECMWF G, Telefax (0118) 986 9450, e-mail: abdalla@ecmwf.int

■ ECMWF Report on ERS-2 SAR for December 2002 ■

Remarks:

- The SAR worked normally this month.

Definitions:

Four new integrated parameters are used to compare the SAR and the model spectra. These parameters are:

1. The mean wave period based on the ‘-1th.’ moment (m_{-1}) defined as:

$$T_{-1} = m_{-1} / m_0$$

where m_0 and m_{-1} are the zeroth and the ‘-1th.’ moments of the wave spectrum with the n -th. moment, in general, is defined as:

$$m_n = \int d\theta \int df \cdot f^n \cdot F(f, \theta)$$

F is the wave spectrum in frequency, f , - direction space. The comparison between ECMWF model and SAR mean wave periods for the whole month is given in Figure 7.

2. The wave directional spread defined as:

$$\sigma = \sqrt{2[1 - r_1(f)]}$$

$$r_1(f) = \int df \int d\theta \cdot F(f, \theta) \cdot \cos[\theta - \varphi(f)]$$



Saleh Abdalla

European Centre for Medium Range Weather Forecasts
Shinfield Park, Reading, Berkshire RG2 9AX, England

Telephone: U.K. (0118) 949 9703, International (+44 118) 949 9703

Telex 984 7908 ECMWF G, Telefax (0118) 986 9450, e-mail: abdalla@ecmwf.int

■ ECMWF Report on ERS-2 SAR for December 2002 ■

$$\varphi(f) = \operatorname{atan} \left\{ \frac{[\int d\theta \cdot F(f, \theta) \cdot \sin(\theta)]}{[\int d\theta \cdot F(f, \theta) \cdot \cos(\theta)]} \right\}$$

The comparison between ECMWF model and SAR wave directional spread values for the whole month is given in Figure 8.

3. The mean wave propagation direction defined as:

$$\varphi = \operatorname{atan} \left\{ \frac{[\int df \int d\theta \cdot F(f, \theta) \cdot \sin(\theta)]}{[\int df \int d\theta \cdot F(f, \theta) \cdot \cos(\theta)]} \right\}$$

The comparison between ECMWF model and SAR mean wave propagation directions for the whole month is given in Figure 9.

4. The spectral peakedness parameter of Goda (Q_p) defined as:

$$Q_p = 2m_0^{-2} \int d\theta \int df \cdot f \cdot F^2(f, \theta)$$

The comparison between ECMWF model and SAR spectral peakedness (or roughly, spectral narrowness) values for the whole month is given in Figure 10.



■ ECMWF Report on ERS-2 SAR for December 2002 ■

Figure captions:

- Figure 1: Time series of data reception for ERS-2 Altimeter data for December 2002.
- Figure 2: Comparison of ECMWF wave height results with ERS-2 SAR wave height data for December 2002 (global).
- Figure 3: Comparison of ECMWF wave height results with ERS-2 SAR wave height data for December 2002 (northern hemisphere)
- Figure 4: Comparison of ECMWF wave height results with ERS-2 SAR wave height data for December 2002 (tropics)
- Figure 5: Comparison of ECMWF wave height results with ERS-2 SAR wave height data for December 2002 (southern hemisphere)
- Figure 6: ERS-2 SAR wave heights: Timeseries of bias (ERS-2 - model) and scatter index (SI).
- Figure 7: Comparison of ECMWF mean wave periods with ERS-2 SAR mean wave periods for December 2002 (global).
- Figure 8: Comparison of ECMWF wave directional spread with that of ERS-2 SAR for December 2002 (global).
- Figure 9: Comparison of ECMWF mean wave directions with those of ERS-2 SAR for December 2002 (global).
- Figure 10: Comparison of ECMWF wave peakedness factor with that of ERS-2 SAR for December 2002 (global).
- Figure 11: ERS-2 SAR wave heights: Timeseries of daily bias (ERS-2 - model) for the past year.
- Figure 12: ERS-2 SAR wave heights: Timeseries of daily root mean square difference (RMSE) for the past year.
- Figure 13: Comparison between SAR and ECMWF “2-second wave-period interval equivalent wave heights” for December 2002 (global).
- Figure 14: Comparison between SAR and ECMWF “2-second wave-period interval equivalent wave heights” for December 2002 (n. hem.).
- Figure 15: Comparison between SAR and ECMWF “2-second wave-period interval equivalent wave heights” for December 2002 (tropics).
- Figure 14: Comparison between SAR and ECMWF “2-second wave-period interval equivalent wave heights” for December 2002 (s. hem.).

■
Saleh Abdalla

European Centre for Medium Range Weather Forecasts
Shinfield Park, Reading, Berkshire RG2 9AX, England
Telephone: U.K. (0118) 949 9703, International (+44 118) 949 9703
Telex 984 7908 ECMWF G, Telefax (0118) 986 9450, e-mail: abdalla@ecmwf.int

■ ECMWF Report on ERS-2 SAR for December 2002 ■

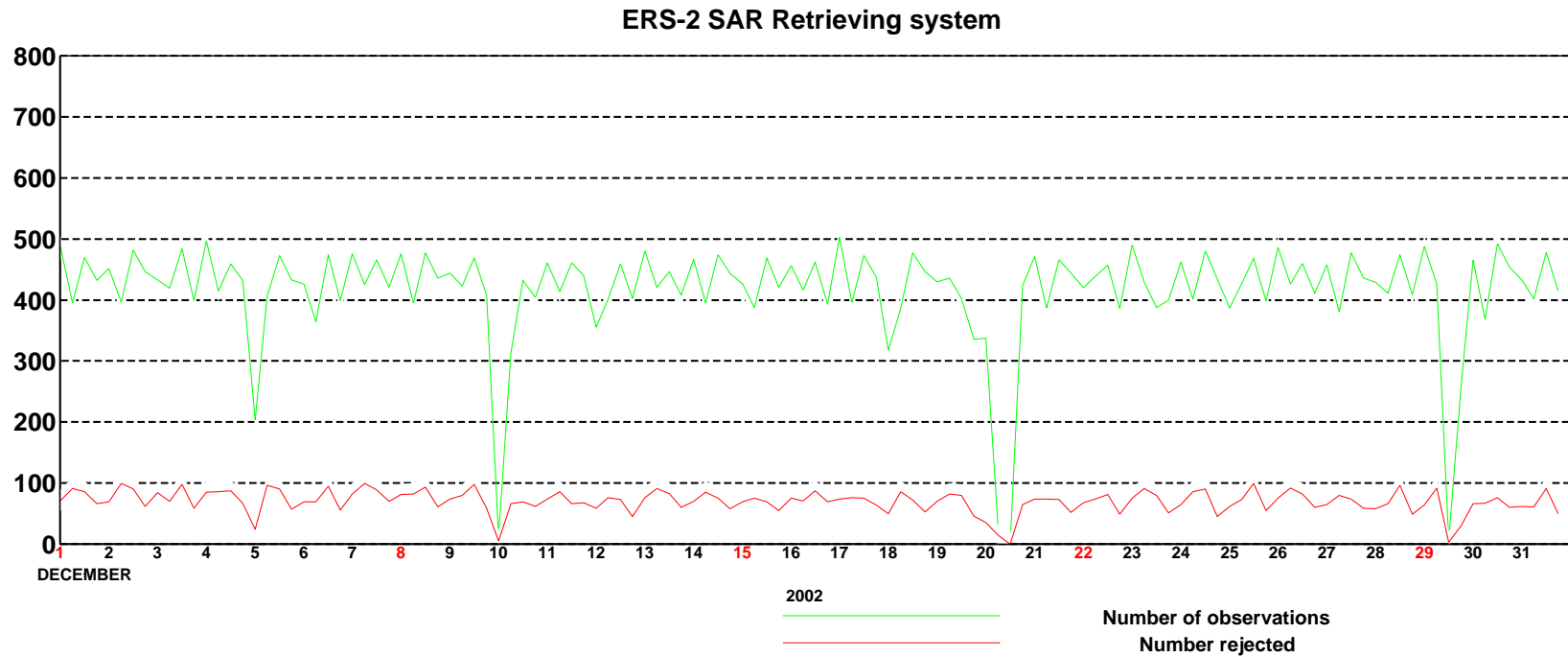


Figure 1: Time series of data reception for ERS-2 SAR wave mode spectra for December 2002

ECMWF Report on ERS-2 SAR for December 2002

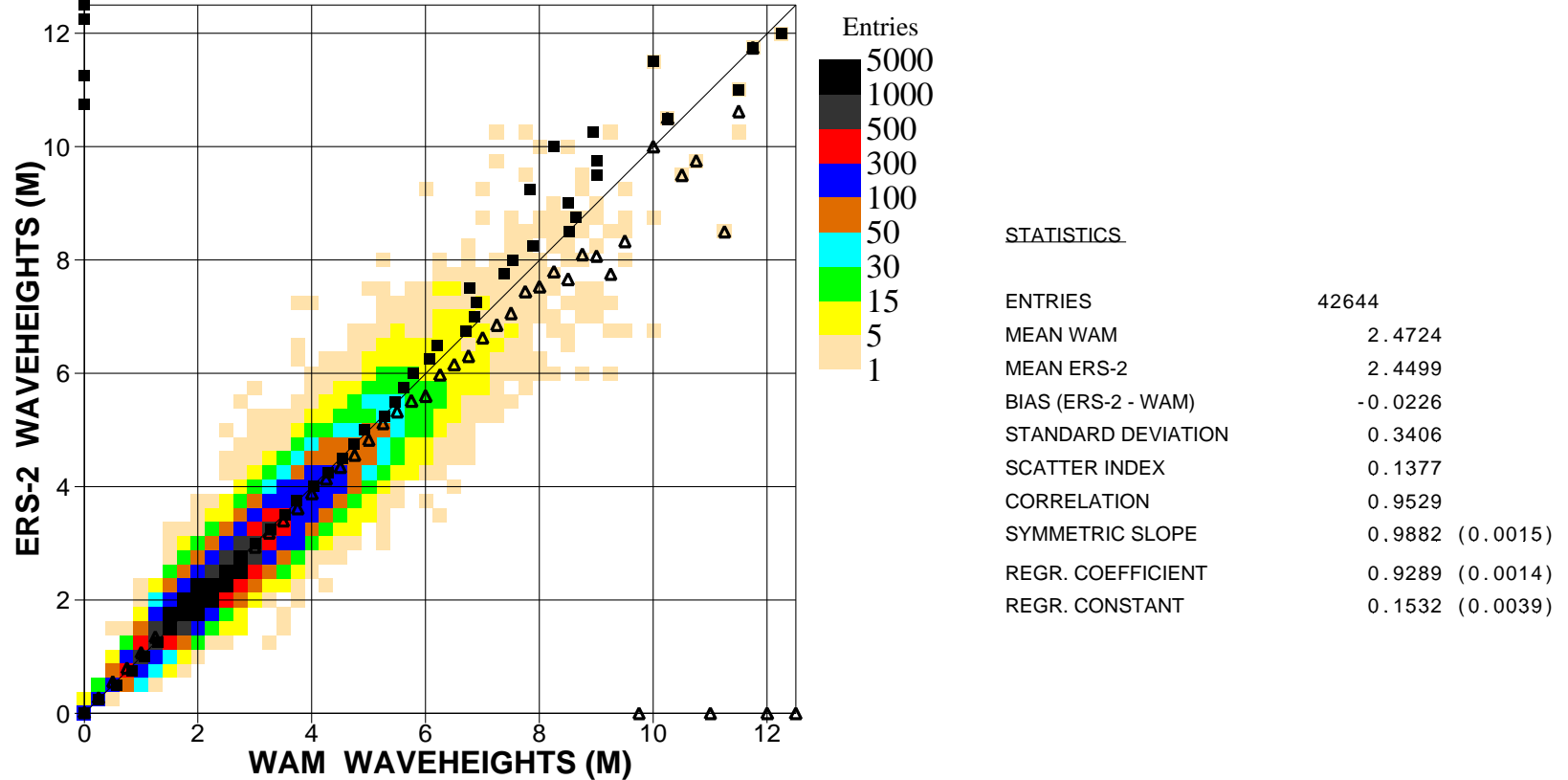


Figure 2: Comparison of ECMWF wave height results with ERS2 SAR wave height data for December 2002 (global)

Saleh Abdalla

European Centre for Medium Range Weather Forecasts
 Shinfield Park, Reading, Berkshire RG2 9AX, England
 Telephone: U.K. (0118) 949 9703, International (+44 118) 949 9703
 Telex 984 7908 ECMWF G, Telefax (0118) 986 9450, e-mail: abdalla@ecmwf.int

ECMWF Report on ERS-2 SAR for December 2002

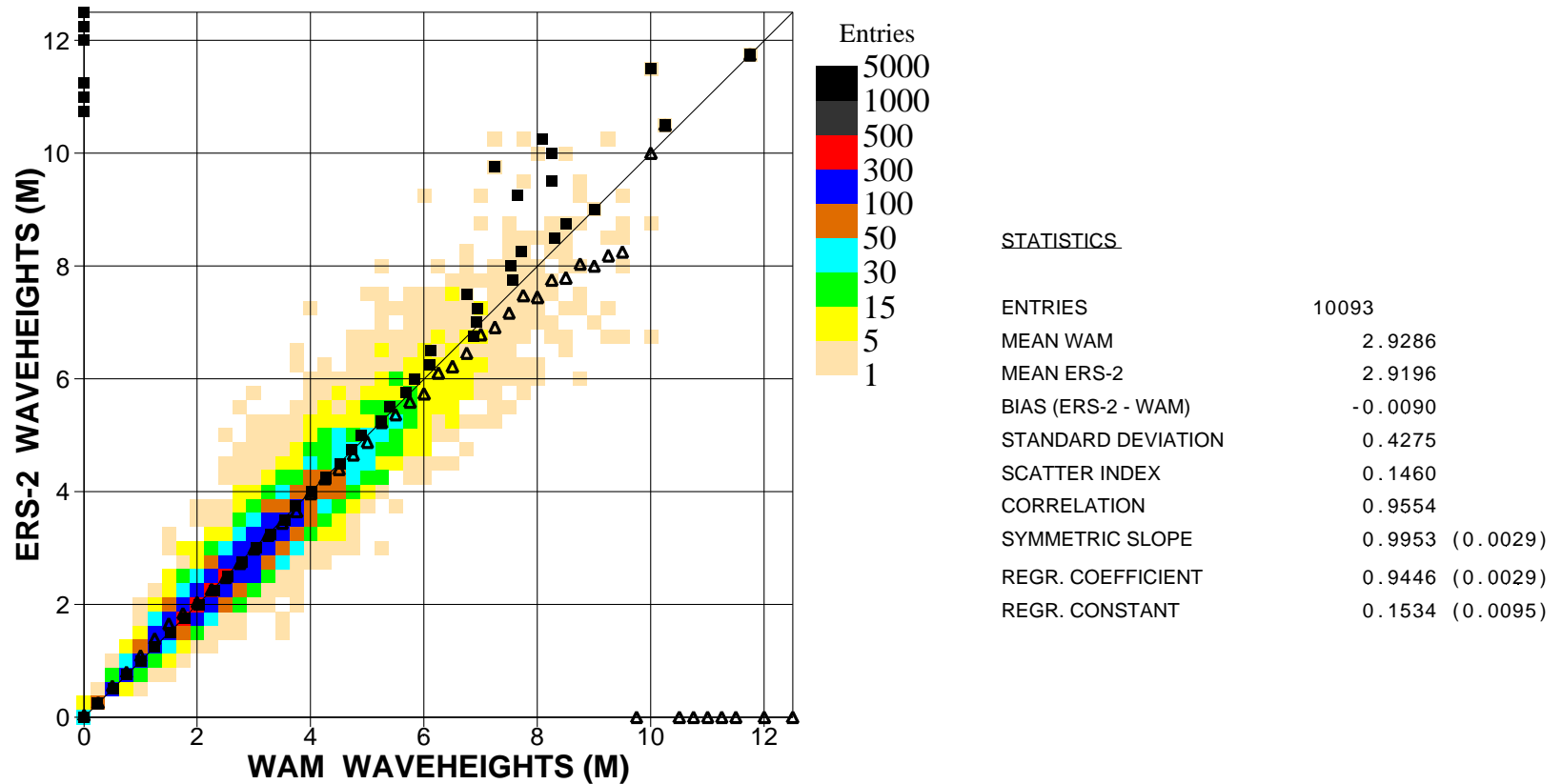


Figure 3: Comparison of ECMWF wave height results with ERS2 SAR wave height data for December 2002 (n.hem.)

Saleh Abdalla

European Centre for Medium Range Weather Forecasts
 Shinfield Park, Reading, Berkshire RG2 9AX, England
 Telephone: U.K. (0118) 949 9703, International (+44 118) 949 9703
 Telex 984 7908 ECMWF G, Telefax (0118) 986 9450, e-mail: abdalla@ecmwf.int

■ ECMWF Report on ERS-2 SAR for December 2002 ■

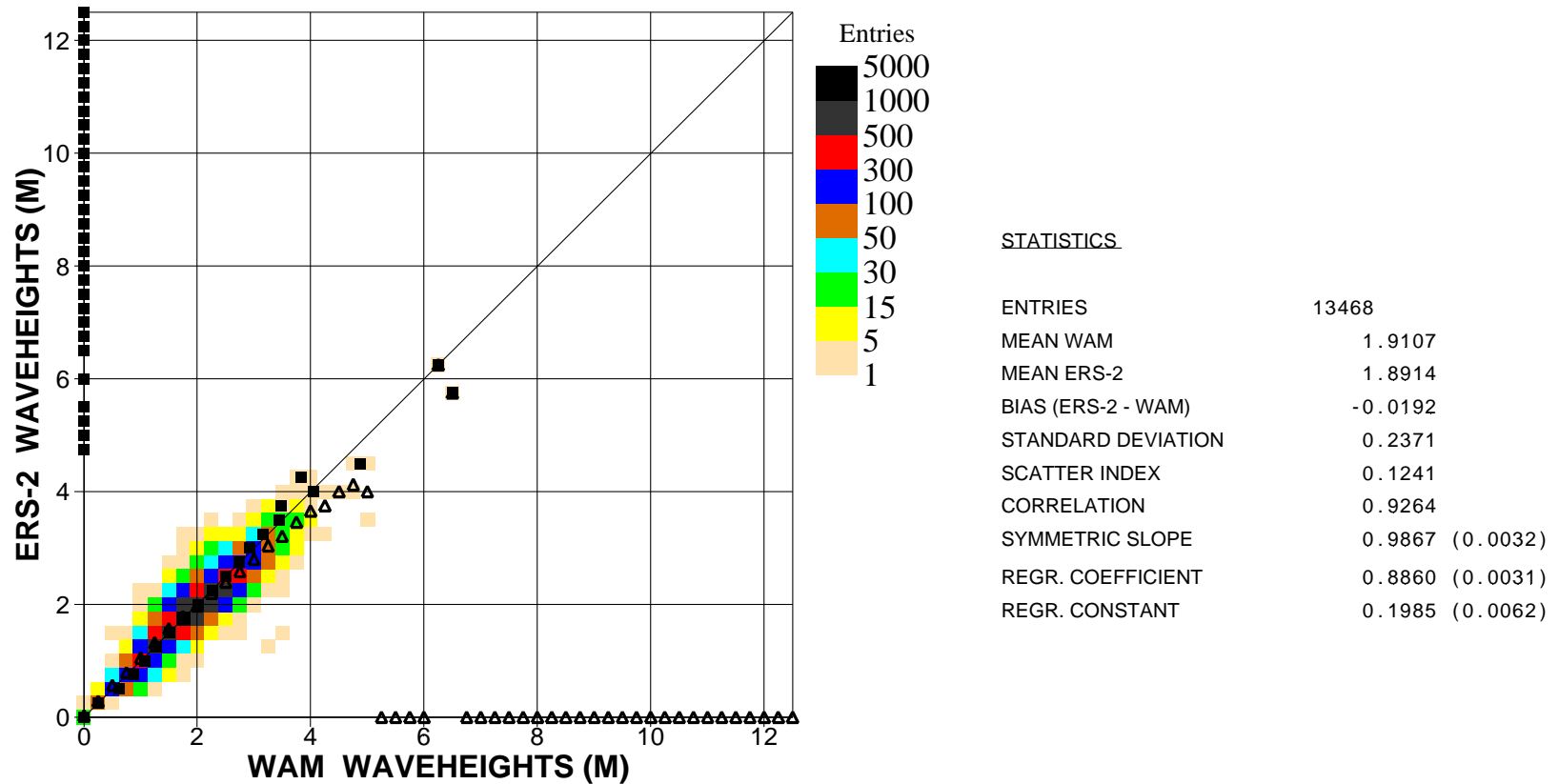


Figure 4: Comparison of ECMWF wave height results with ERS2 SAR wave height data for December 2002 (tropics)

■
Saleh Abdalla

European Centre for Medium Range Weather Forecasts
 Shinfield Park, Reading, Berkshire RG2 9AX, England
 Telephone: U.K. (0118) 949 9703, International (+44 118) 949 9703
 Telex 984 7908 ECMWF G, Telefax (0118) 986 9450, e-mail: abdalla@ecmwf.int

ECMWF Report on ERS-2 SAR for December 2002

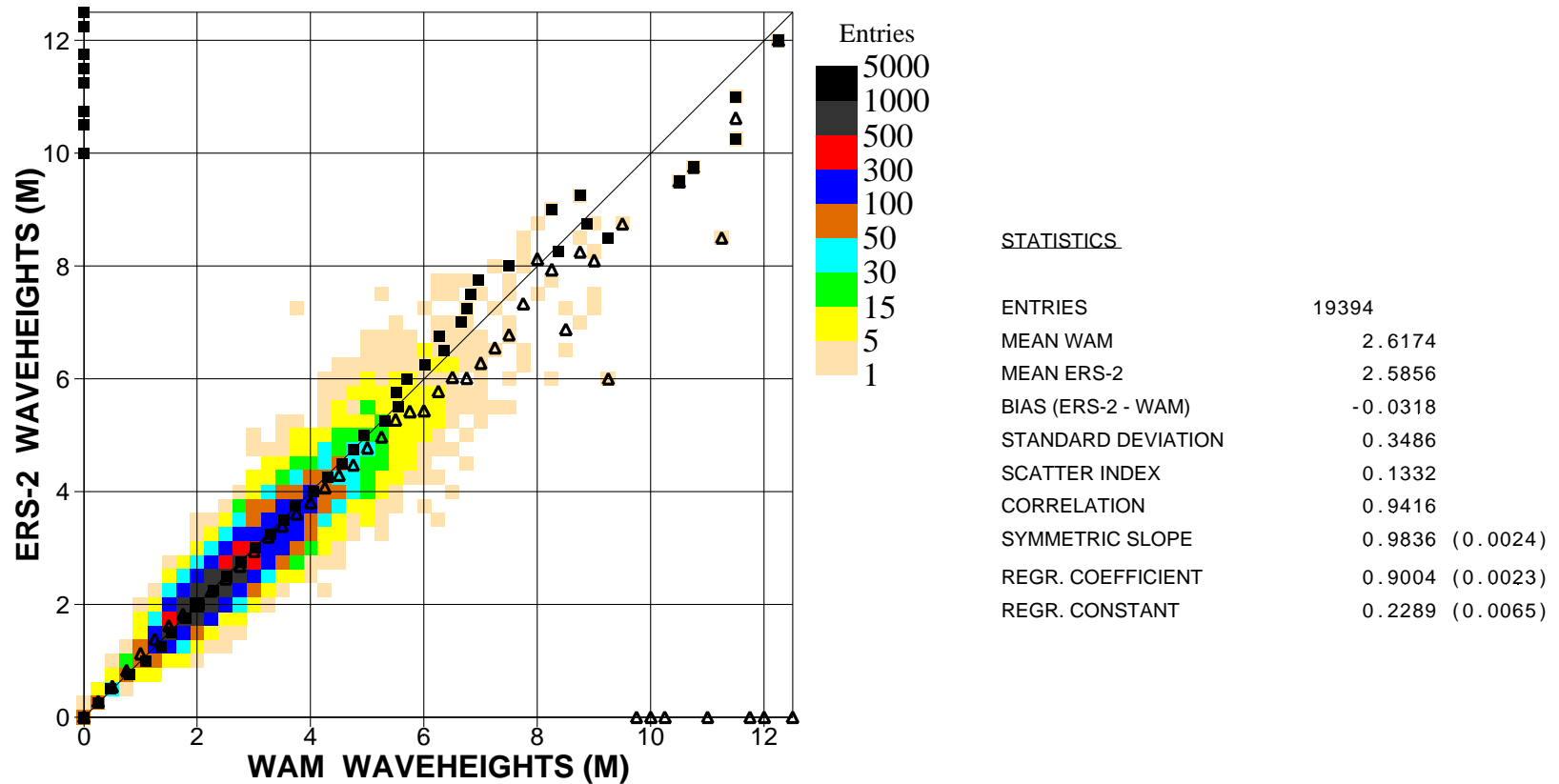


Figure 5: Comparison of ECMWF wave height results with ERS2 SAR wave height data for December 2002 (s.hem.)

Saleh Abdalla

European Centre for Medium Range Weather Forecasts
 Shinfield Park, Reading, Berkshire RG2 9AX, England
 Telephone: U.K. (0118) 949 9703, International (+44 118) 949 9703
 Telex 984 7908 ECMWF G, Telefax (0118) 986 9450, e-mail: abdalla@ecmwf.int

ECMWF Report on ERS-2 SAR for December 2002

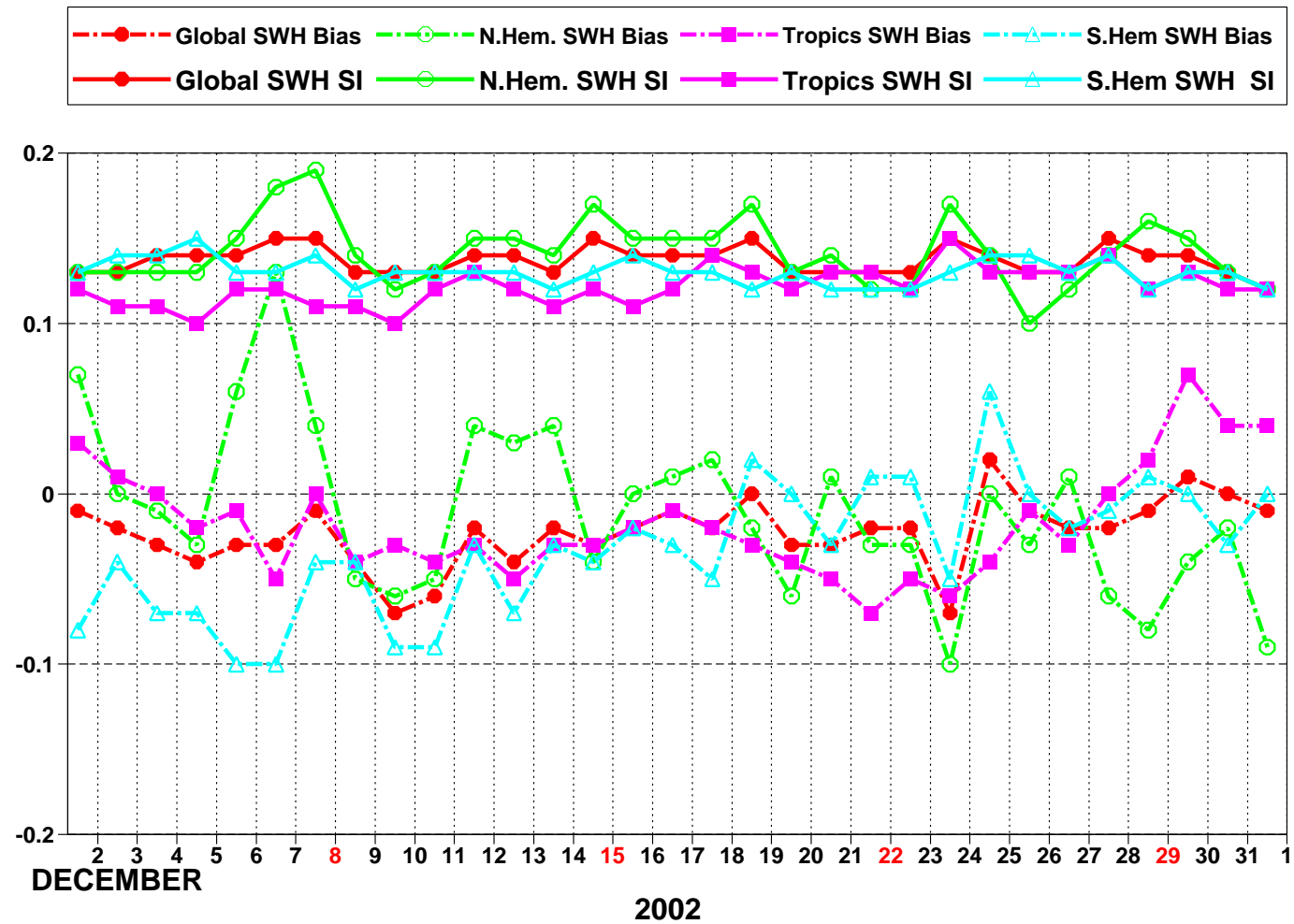


Figure 6: ERS-2 SAR wave heights: Timeseries of bias (ERS-2 - model) and scatter index (SI)



■ ECMWF Report on ERS-2 SAR for December 2002 ■

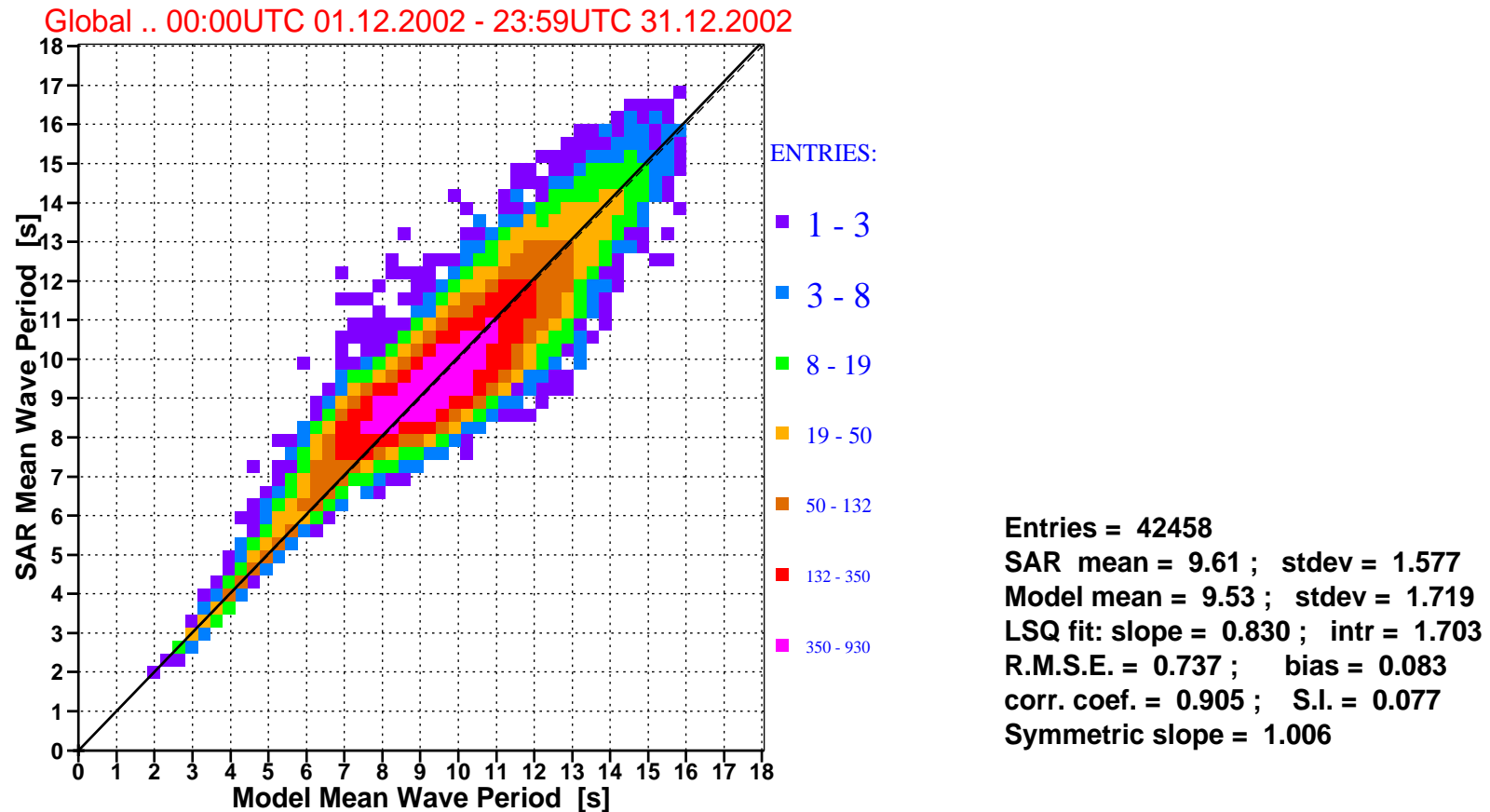


Figure 7: Comparison of ECMWF mean wave periods with ERS-2 SAR mean wave periods for decemeber 2002 (global).

■
Saleh Abdalla

European Centre for Medium Range Weather Forecasts
Shinfield Park, Reading, Berkshire RG2 9AX, England
Telephone: U.K. (0118) 949 9703, International (+44 118) 949 9703
Telex 984 7908 ECMWF G, Telefax (0118) 986 9450, e-mail: abdalla@ecmwf.int

■ ECMWF Report on ERS-2 SAR for December 2002 ■

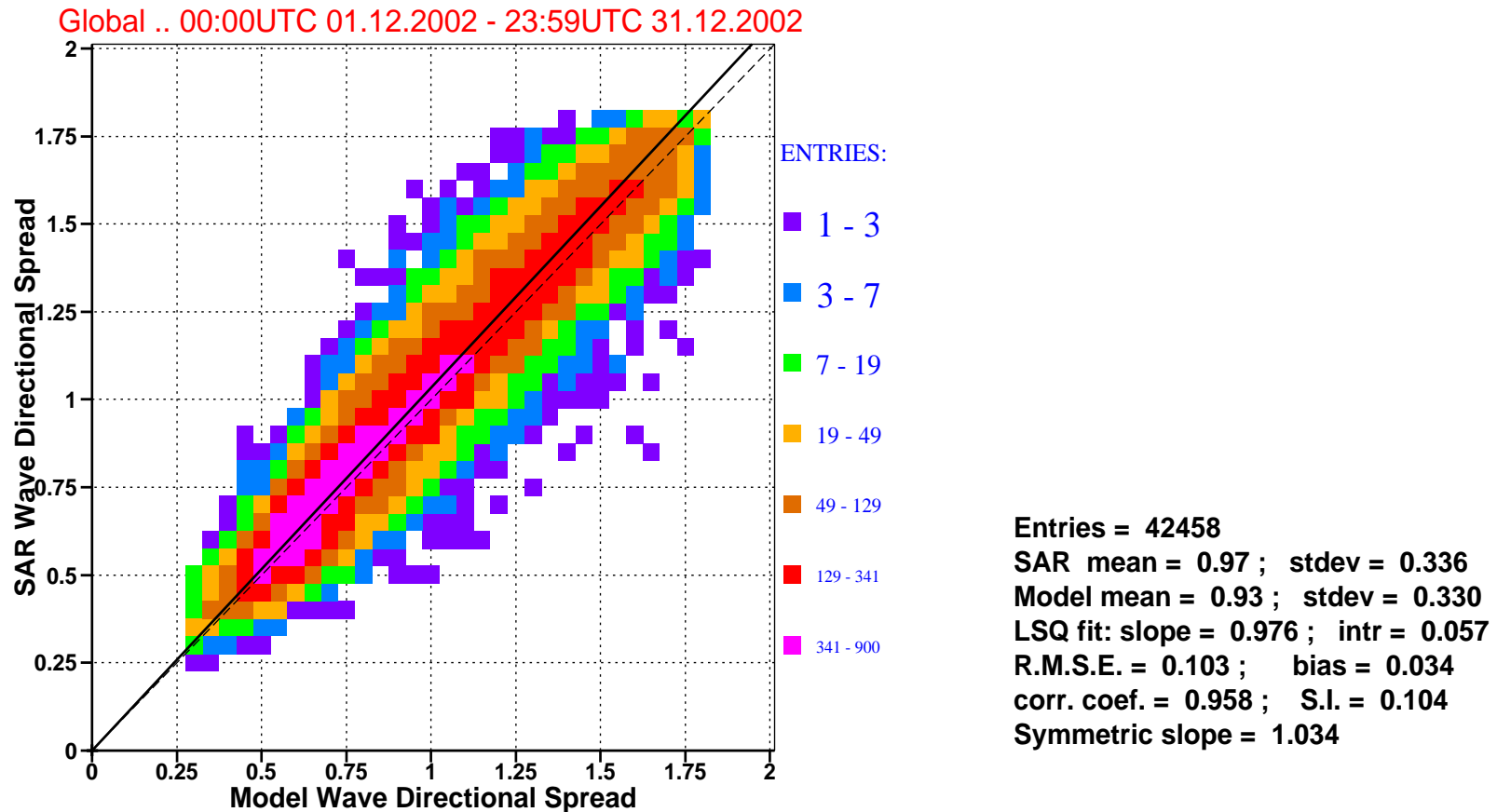


Figure 8: Comparison of ECMWF wave directional spread with that of ERS-2 SAR for decemeber 2002 (global).

■
 Saleh Abdalla

European Centre for Medium Range Weather Forecasts
 Shinfield Park, Reading, Berkshire RG2 9AX, England
 Telephone: U.K. (0118) 949 9703, International (+44 118) 949 9703
 Telex 984 7908 ECMWF G, Telefax (0118) 986 9450, e-mail: abdalla@ecmwf.int

■ ECMWF Report on ERS-2 SAR for December 2002 ■

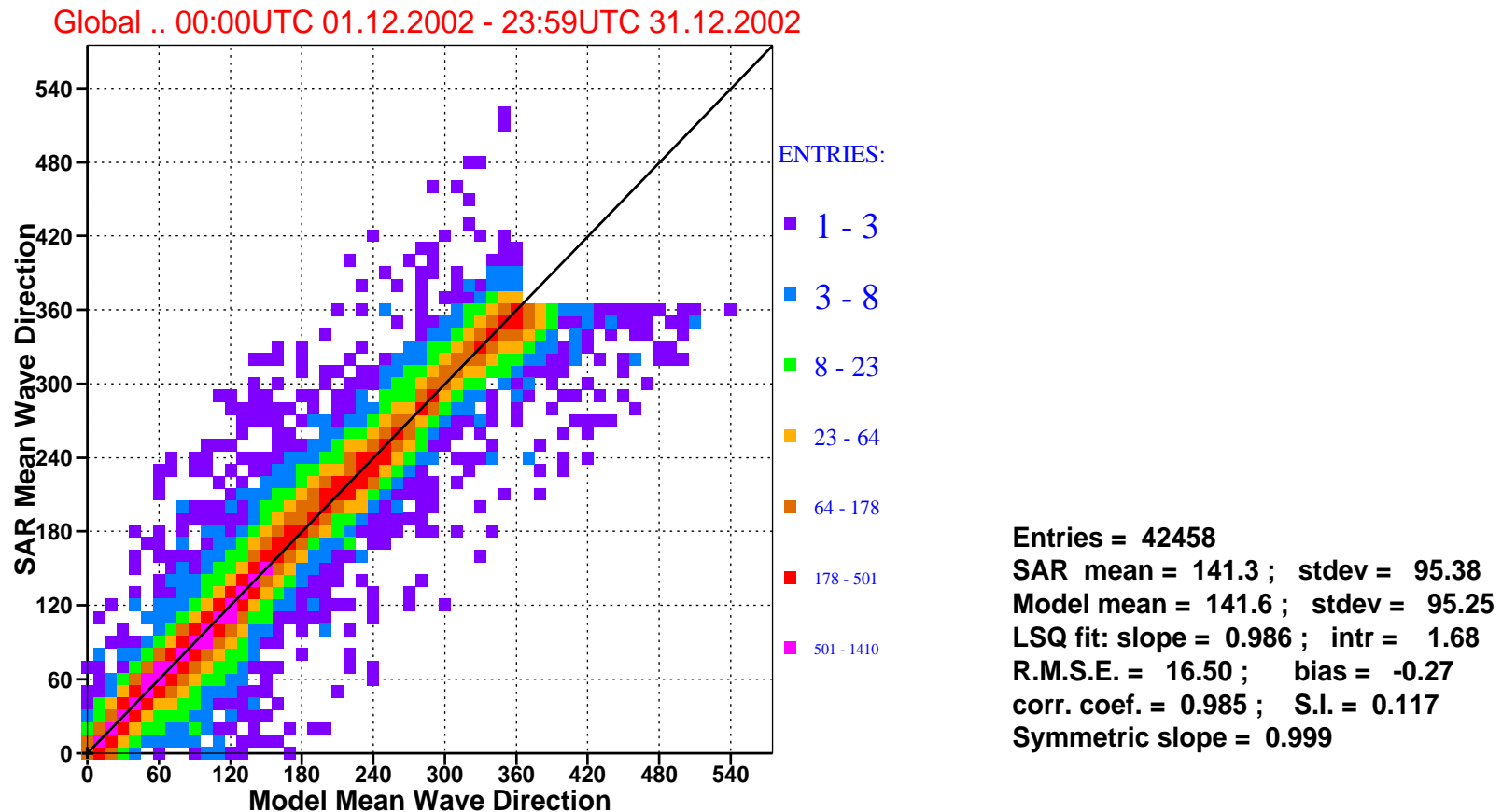


Figure 9: Comparison of ECMWF mean wave directions with that of ERS-2 SAR for decemeber 2002 (global).

■
 Saleh Abdalla

European Centre for Medium Range Weather Forecasts
 Shinfield Park, Reading, Berkshire RG2 9AX, England
 Telephone: U.K. (0118) 949 9703, International (+44 118) 949 9703
 Telex 984 7908 ECMWF G, Telefax (0118) 986 9450, e-mail: abdalla@ecmwf.int

■ ECMWF Report on ERS-2 SAR for December 2002 ■

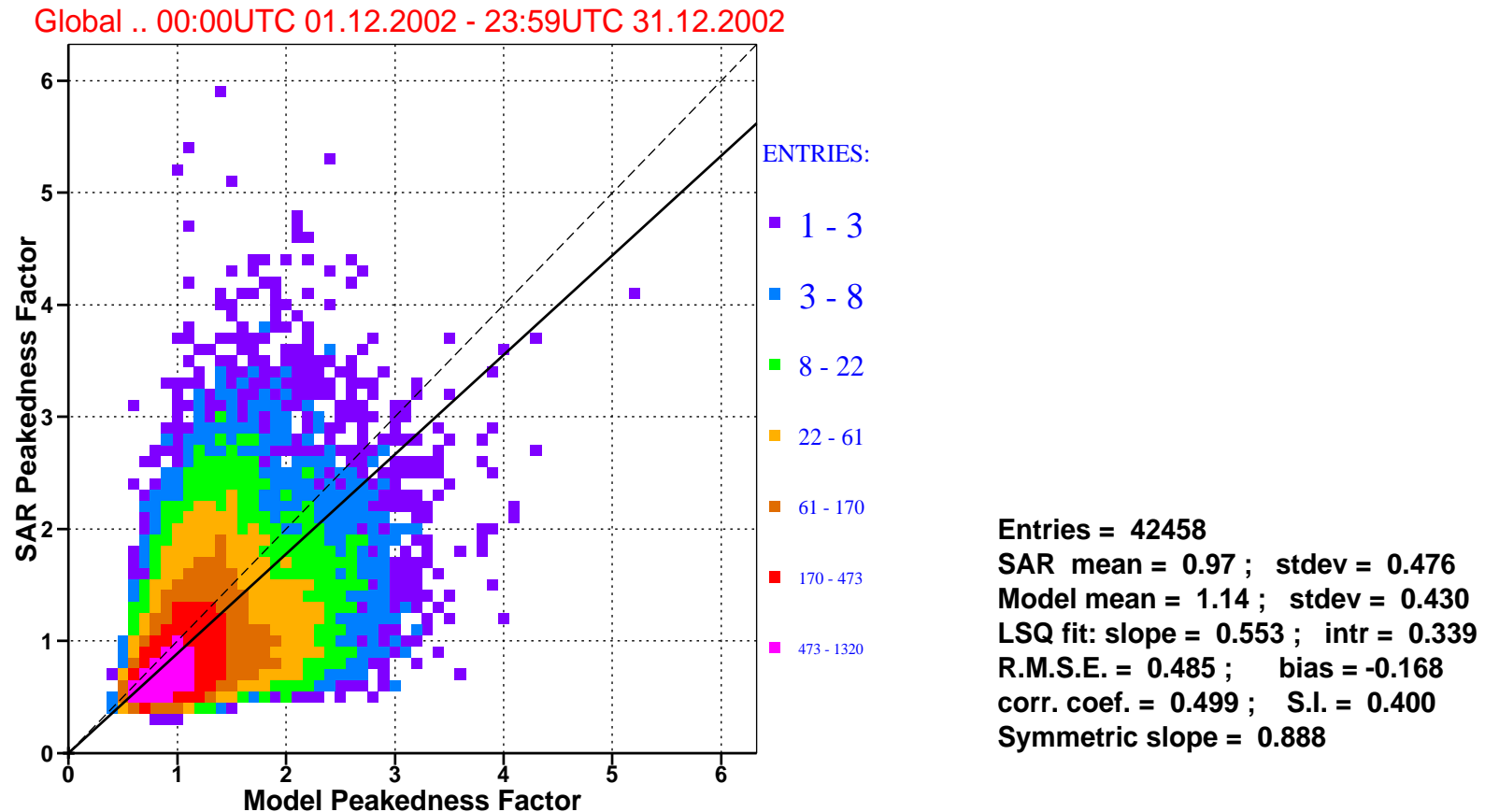


Figure 10: : Comparison of ECMWF wave peakedness factor with that of ERS-2 SAR for decemeber 2002 (global).

■
 Saleh Abdalla

European Centre for Medium Range Weather Forecasts
 Shinfield Park, Reading, Berkshire RG2 9AX, England
 Telephone: U.K. (0118) 949 9703, International (+44 118) 949 9703
 Telex 984 7908 ECMWF G, Telefax (0118) 986 9450, e-mail: abdalla@ecmwf.int

■ ECMWF Report on ERS-2 SAR for December 2002 ■

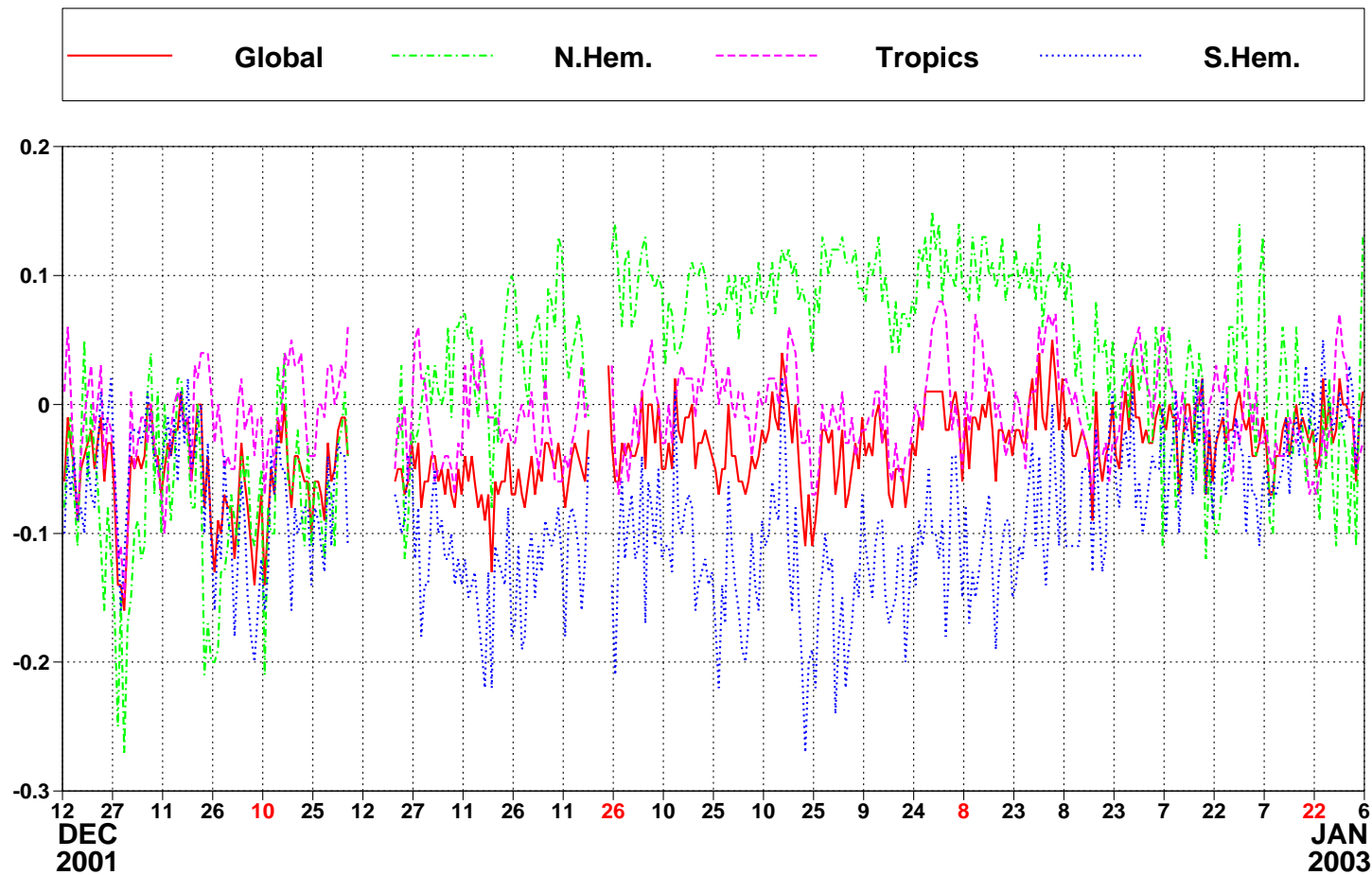


Figure 11: ERS-2 SAR wave heights: Timeseries of daily bias (ERS-2 - model) for the past year.



Saleh Abdalla

European Centre for Medium Range Weather Forecasts
Shinfield Park, Reading, Berkshire RG2 9AX, England

Telephone: U.K. (0118) 949 9703, International (+44 118) 949 9703

Telex 984 7908 ECMWF G, Telefax (0118) 986 9450, e-mail: abdalla@ecmwf.int

■ ECMWF Report on ERS-2 SAR for December 2002 ■

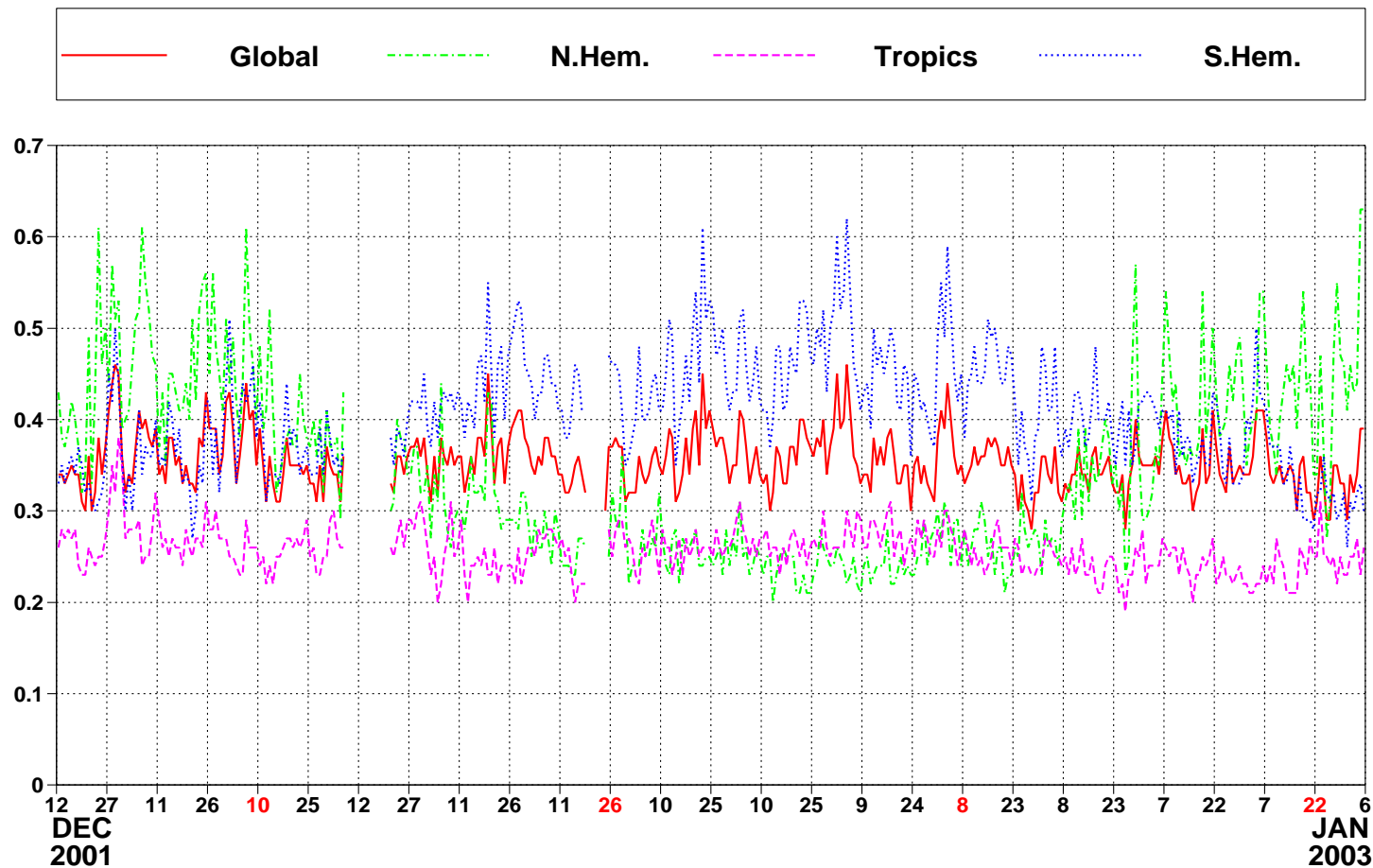


Figure 12: ERS-2 SAR wave heights: Timeseries of daily root mean square difference (RMSE) for the past year.



Saleh Abdalla

European Centre for Medium Range Weather Forecasts
Shinfield Park, Reading, Berkshire RG2 9AX, England

Telephone: U.K. (0118) 949 9703, International (+44 118) 949 9703

Telex 984 7908 ECMWF G, Telefax (0118) 986 9450, e-mail: abdalla@ecmwf.int

■ ECMWF Report on ERS-2 SAR for December 2002 ■

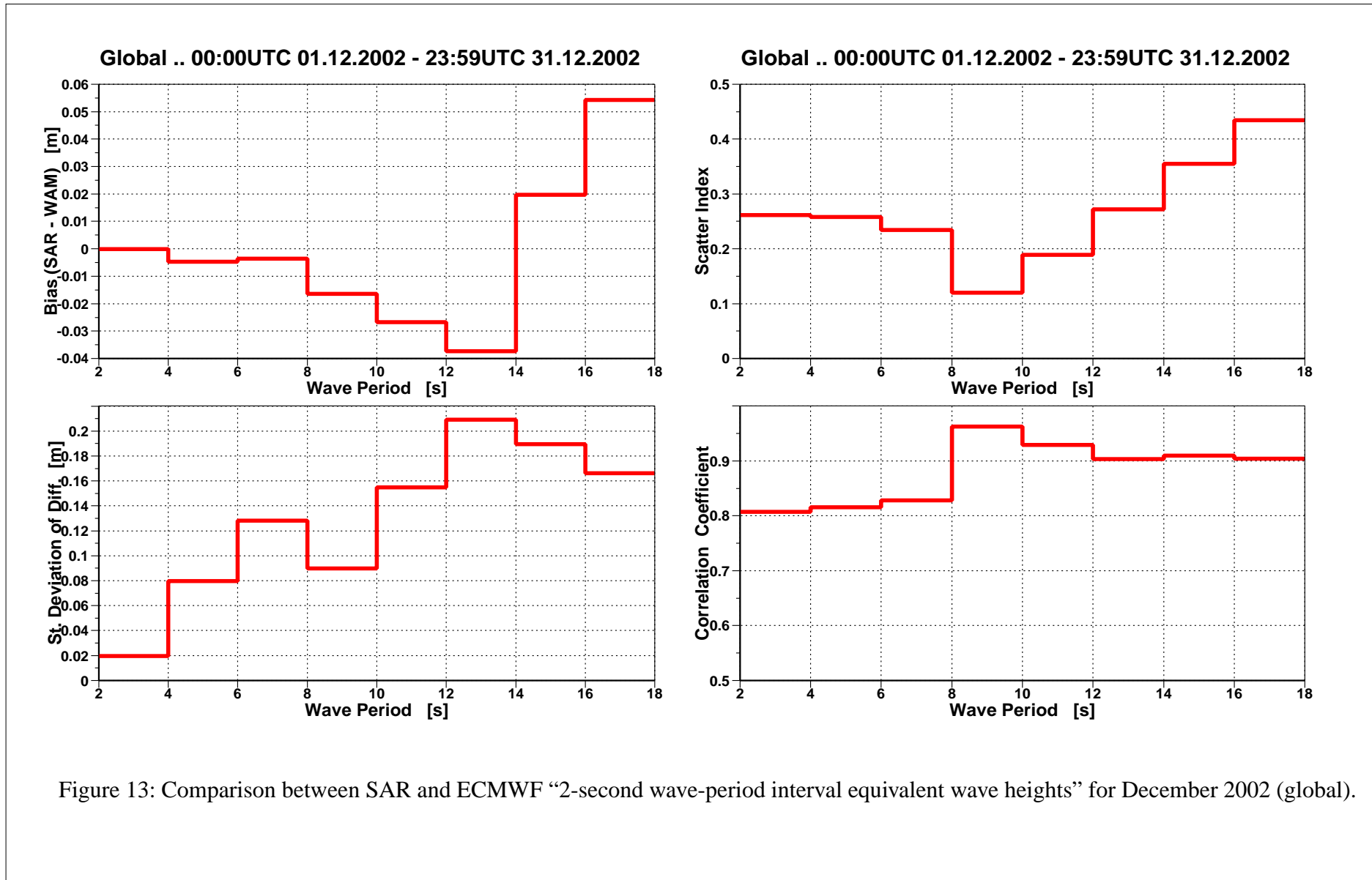


Figure 13: Comparison between SAR and ECMWF "2-second wave-period interval equivalent wave heights" for December 2002 (global).

■ ECMWF Report on ERS-2 SAR for December 2002 ■

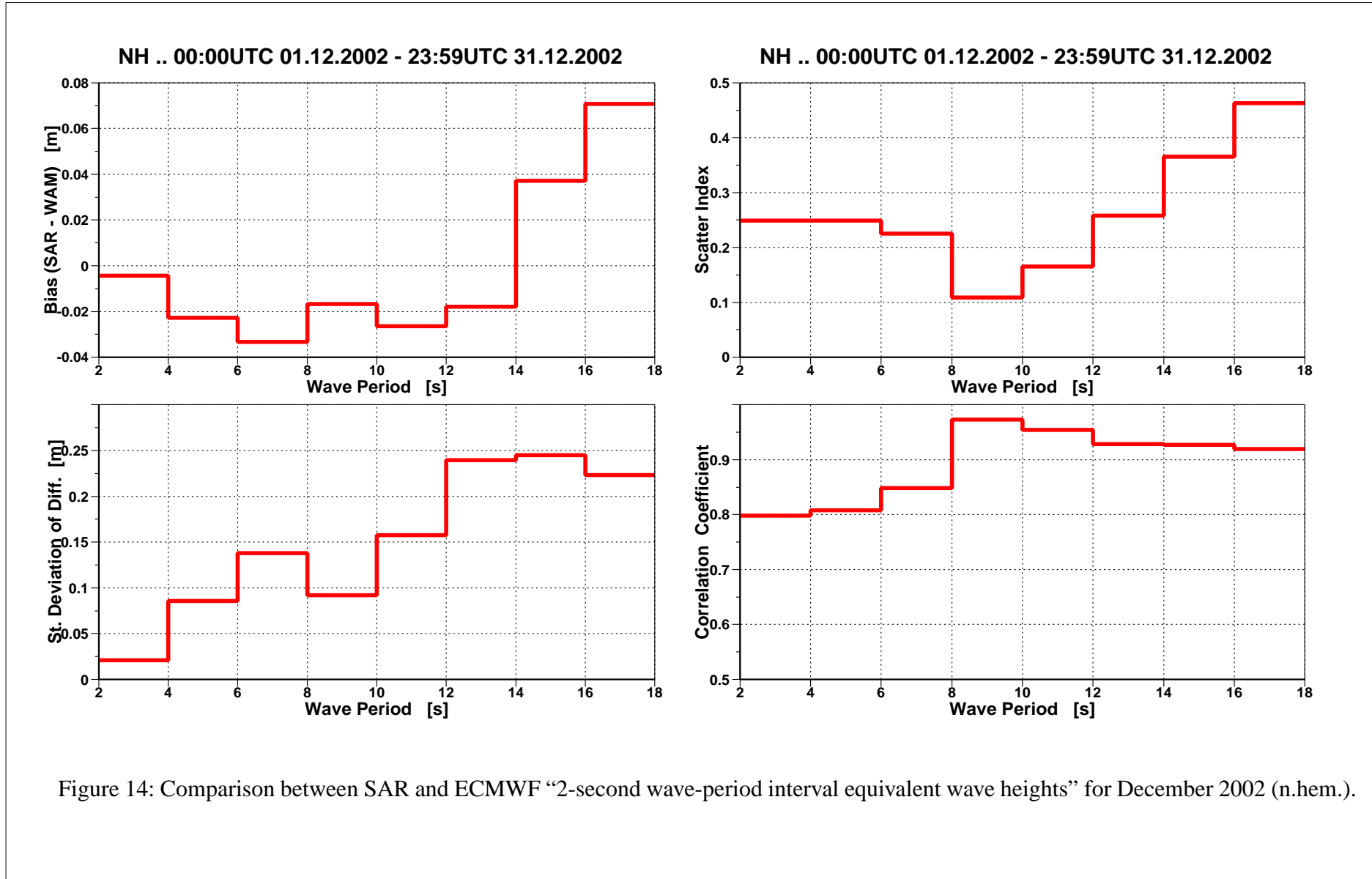


Figure 14: Comparison between SAR and ECMWF “2-second wave-period interval equivalent wave heights” for December 2002 (n.hem.).

■
Saleh Abdalla

European Centre for Medium Range Weather Forecasts
Shinfield Park, Reading, Berkshire RG2 9AX, England
Telephone: U.K. (0118) 949 9703, International (+44 118) 949 9703
Telex 984 7908 ECMWF G, Telefax (0118) 986 9450, e-mail: abdalla@ecmwf.int

■ ECMWF Report on ERS-2 SAR for December 2002 ■

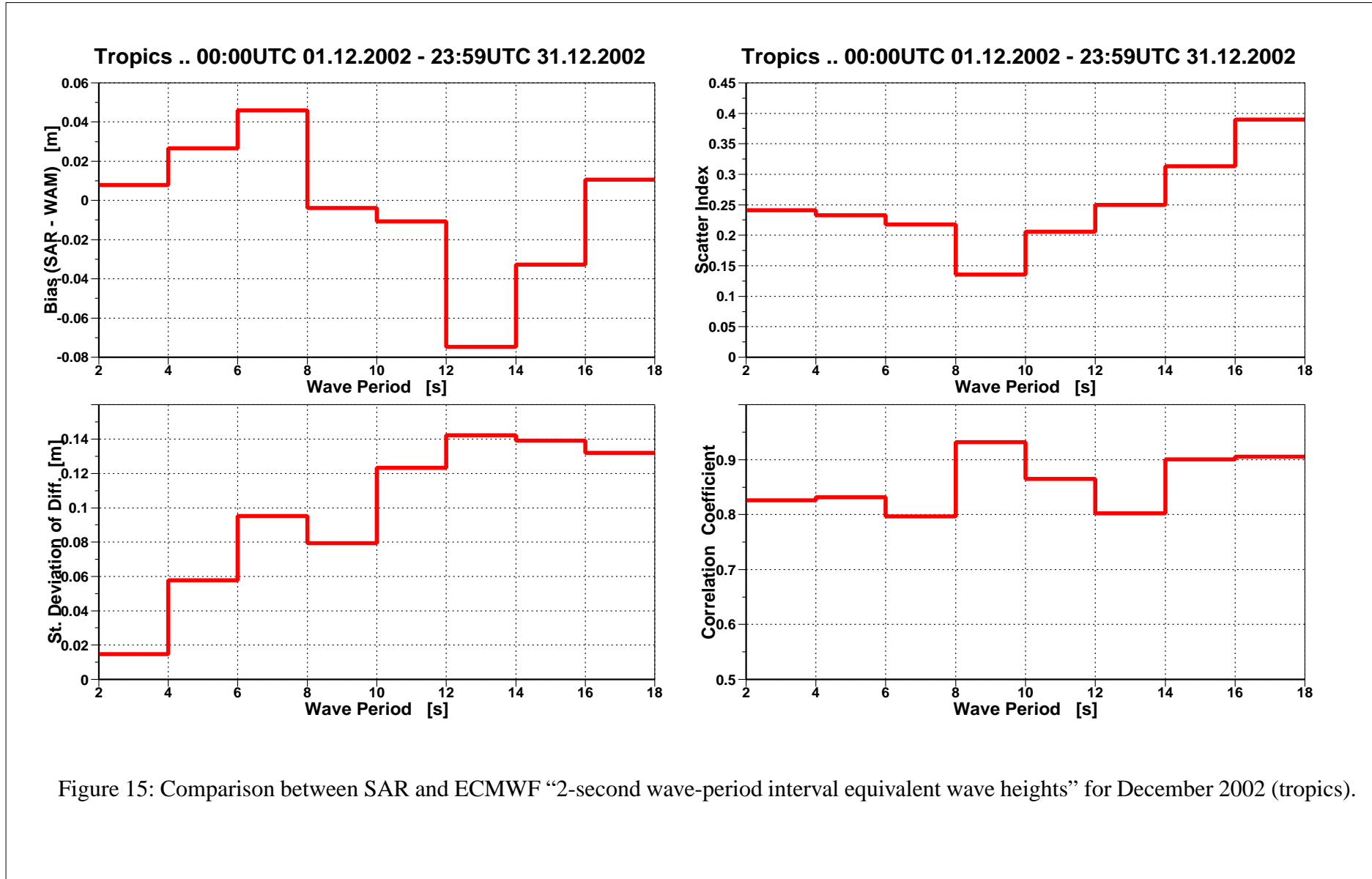


Figure 15: Comparison between SAR and ECMWF “2-second wave-period interval equivalent wave heights” for December 2002 (tropics).

■ ECMWF Report on ERS-2 SAR for December 2002 ■

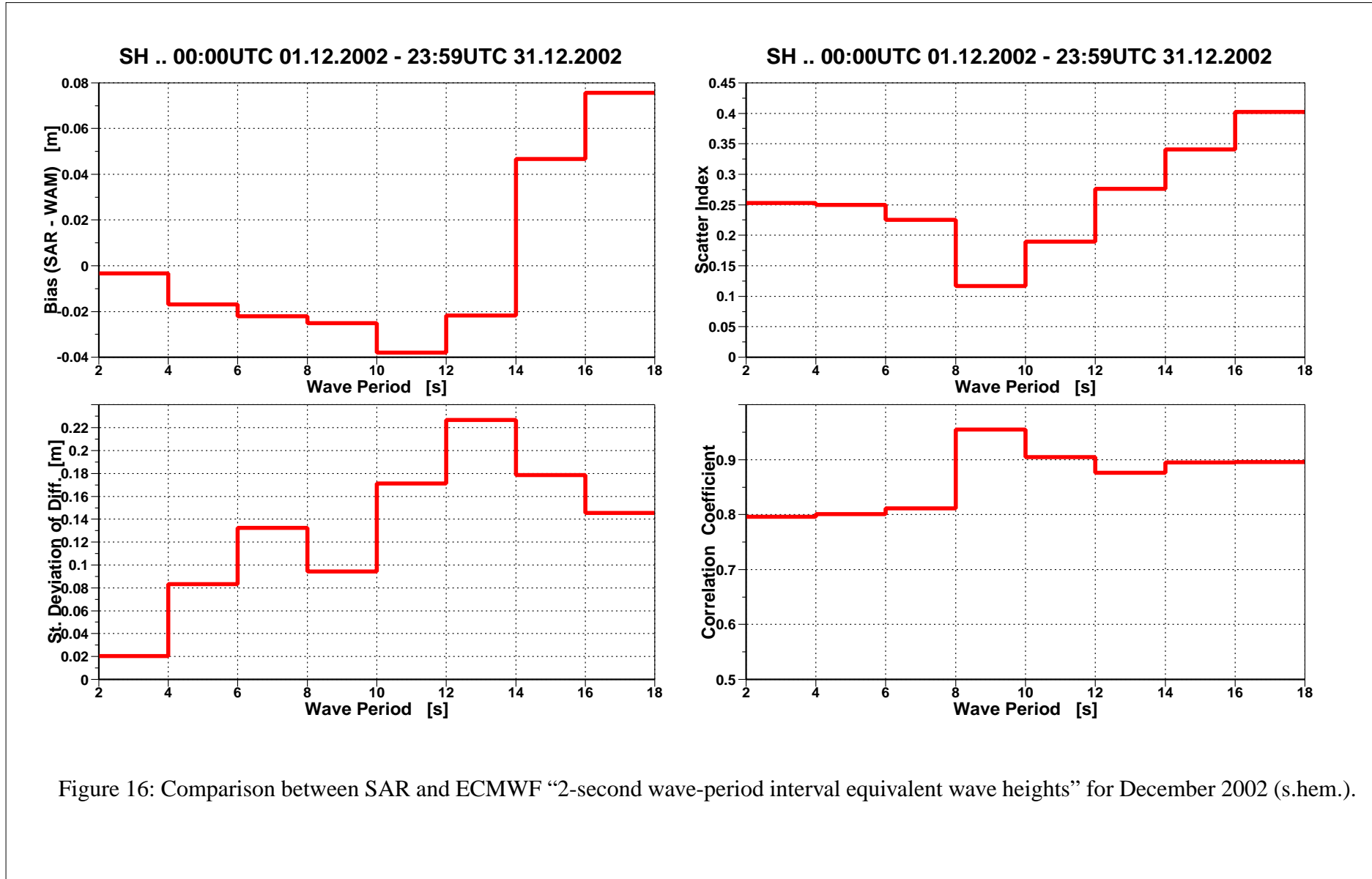


Figure 16: Comparison between SAR and ECMWF “2-second wave-period interval equivalent wave heights” for December 2002 (s.hem.).

■
Saleh Abdalla

European Centre for Medium Range Weather Forecasts
Shinfield Park, Reading, Berkshire RG2 9AX, England
Telephone: U.K. (0118) 949 9703, International (+44 118) 949 9703
Telex 984 7908 ECMWF G, Telefax (0118) 986 9450, e-mail: abdalla@ecmwf.int