

# ■ ECMWF Report on ERS-2 RA for March 2005 ■

## **Title: Report on ERS-2 Radar Altimeter wave height and wind speed data.**

**By:** *Saleh Abdalla*

**Date:** *7 April 2005*

### **Overview:**

Based on the data received during the whole month, on average, 3835 observations arrived at ECMWF every 6 hours of which 63.78% passed the quality control. The data coverage has been significantly reduced to around 15% of the nominal data reception following the failure of the ERS-2 tape recorders. As can be seen in Figure 1, there was only one data gap during the 6-hour time window centred at 06:00 UTC on the 22nd. of the month. Furthermore, there was significant reduction of data at few time windows. Note that we are talking about the raw data which have arrived at ECMWF before they were processed. The quality of the received data, which are now limited to the **North Atlantic and the western coast of North America**, is as good as usual.

### Backscatter:

ERS-2  $\langle \sigma_0 \rangle = 11.05$  dB (with a main peak at  $\sim 10.6$  dB and two secondary peaks at 9.6 dB and  $\sim 11.3$  dB with a tendency for a third secondary peak at  $\sim 8.4$  dB).

### Wind Speed Comparison with ECMWF wind speeds (bias):

ERS-2 global: + 0.102 m/s

ERS-2 northern hemisphere: + 0.150 m/s

ERS-2 tropics: - 0.132 m/s

ERS-2 southern hemisphere: *missing*



Saleh Abdalla

European Centre for Medium Range Weather Forecasts  
Shinfield Park, Reading, Berkshire RG2 9AX, England

Telephone: U.K. (0118) 949 9703, International (+44 118) 949 9703

Telex 984 7908 ECMWF G, Telefax (0118) 986 9450, e-mail: [abdalla@ecmwf.int](mailto:abdalla@ecmwf.int)

# ■ ECMWF Report on ERS-2 RA for March 2005 ■

## Wind Speed Comparison with buoy wind speeds (bias):

ERS-2 global: - 0.183 m/s

ERS-2 northern hemisphere: - 0.174 m/s

ERS-2 tropics: *missing*

## Wave Height Comparison with ECMWF wave heights (bias):

ERS-2 global: - 0.048 m (lowest waves measured: 0.6m)

ERS-2 northern hemisphere: - 0.035 m

ERS-2 tropics: - 0.108 m

ERS-2 southern hemisphere: *missing*

## Wave Height Comparison with buoy wave heights (bias):

ERS-2 global: - 0.072 m

ERS-2 northern hemisphere: -0.073 m

ERS-2 tropics: *missing*

## Remarks:

- The quality of Altimeter data, both wind speed (apart from few outliers) and significant wave height, is as good as it used to be.



Saleh Abdalla

European Centre for Medium Range Weather Forecasts  
Shinfield Park, Reading, Berkshire RG2 9AX, England

Telephone: U.K. (0118) 949 9703, International (+44 118) 949 9703

Telex 984 7908 ECMWF G, Telefax (0118) 986 9450, e-mail: abdalla@ecmwf.int

# ■ ECMWF Report on ERS-2 RA for March 2005 ■

- According to ESA (EOHelp message of 4 July 2003), the recording capabilities of ERS-2 are declared permanently unavailable following the failure of the ERS-2 tape recorder on 22 June 2003. The ERS-2 tape recorders were used to record the ERS-2 Low Rate mission globally for a period of 8 years of continuous acquisition. The global coverage is, therefore, discontinued. The ERS-2 Low Rate mission will be continued within the visibility of ESA ground stations over Europe, North Atlantic, the Arctic and western North America. ESA has the intention to extend the coverage of the Real Time Low Rate acquisition over the North Atlantic in the near future.
- Assimilation of ERS-2 RA wave heights into ECMWF wave model was stopped on 21st. of October and replaced by ENVISAT RA-2 Ku-band wave heights. Both instruments can not be assimilated at the same time as both satellites follow the same track with relatively short time separation (both can be assimilated if they were not so close).
- ENVISAT Ku-Band wave height data and ERS-2 SAR wave data are assimilated in the ECMWF wave model.
- There was no related ECMWF model changes this month (current operational cycle is CY28R4).

## Comparison Method:

The Altimeter wave height and wind speed data, as received by ECMWF from ESA through GTS, are the so-called fast delivery products. At ECMWF these data are subject to a quality control method, the details of which are described by Janssen et al. (1989) and Bauer et al. (1992). Consequently, superobservations are formed by averaging 30 consecutive data in order to match the spatial scales of the operational WAM model. Therefore, the collocation statistics are based on the comparison between these superobservations and operational wavemodel products.

In addition, since also wave observations from buoys are received through the GTS, the Altimeter products are also compared against buoy observations. Again, in order to have matching scales, the buoy observations are averaged over a six hour time window. Apart from this, also a height correction is applied to the wind speed observations, since not all buoys observe the winds at the standard height of 10 m. A default observation height of 5 m is assumed, and when



# ■ ECMWF Report on ERS-2 RA for March 2005 ■

available the actual observation height is used. In order to interpolate from the observation height to the standard height a logarithmic wind profile with a roughness length as given by the Charnock relation is assumed, where the Charnock parameter is given the constant value of 0.018.

## **Figure captions:**

Figure 1: Time series of data reception for ERS-2 Altimeter data for March 2005.

Figure 2: Distribution of the ERS-2 Altimeter Backscatter after QC for March 2005.

Figure 3: Distribution of the ERS-2 Altimeter wind speeds after QC for March 2005.

Figure 4: Distribution of the ERS-2 Altimeter wind speeds after along track averaging for March 2005.

Figure 5: Global distribution of ECMWF ocean surface wind speeds for March 2005.

Figure 6: Comparison of ECMWF wind speed results with ERS-2 Altimeter wind speed data for March 2005 (global).

Figure 7: Comparison of ECMWF wind speed results with ERS-2 Altimeter wind speed data for March 2005 (northern hemisphere)

Figure 8: Comparison of ECMWF wind speed results with ERS-2 Altimeter wind speed data for March 2005 (tropics)

Figure 9: Comparison of ECMWF wind speed results with ERS-2 Altimeter wind speed data for March 2005 (southern hemisphere)

Figure 10: Comparison of buoy wind speed observations with ERS-2 Altimeter wind speed data for March 2005 (global).

Figure 11: Comparison of buoy wind speed observations with ERS-2 Altimeter wind speed data for March 2005 (northern hemisphere).

Figure 12: Comparison of buoy wind speed observations with ERS-2 Altimeter wind speed data for March 2005 (hawaii).

Figure 13: ERS-2 Altimeter wind speeds: Timeseries of bias (ERS-2 - model) and scatter index (SI).

Figure 14: Distribution of the ERS-2 Altimeter wave heights after QC for March 2005.

Figure 15: Distribution of the ERS-2 Altimeter wave heights after along track averaging for March 2005.

Figure 16: Global distribution of ECMWF wave heights for March 2005.

Figure 17: Comparison of ECMWF wave height results with ERS-2 Altimeter wave height data for March 2005 (global).

Figure 18: Comparison of ECMWF wave height results with ERS-2 Altimeter wave height data for March 2005 (northern hemisphere)

Figure 19: Comparison of ECMWF wave height results with ERS-2 Altimeter wave height data for March 2005 (tropics)

■  
Saleh Abdalla

# ■ ECMWF Report on ERS-2 RA for March 2005 ■

Figure 20: Comparison of ECMWF wave height results with ERS-2 Altimeter wave height data for March 2005 (southern hemisphere)

Figure 21: Comparison of buoy wave height observations with ERS-2 Altimeter wave height data for March 2005 (global).

Figure 22: Comparison of buoy wave height observations with ERS-2 Altimeter wave height data for March 2005 (northern hemisphere).

Figure 23: Comparison of buoy wave height observations with ERS-2 Altimeter wave height data for March 2005 (hawaii).

Figure 24: ERS-2 Altimeter wave heights: Timeseries of bias (ERS-2 - model) and scatter index (SI) for March 2005.

Figure 25: ERS-2 Altimeter wave heights: Timeseries of bias (ERS-2 - model) and scatter index (SI) from December 1996 to March 2005

Figure 26: ERS-2 Altimeter wind speeds: Timeseries of bias (ERS-2 - model) and scatter index (SI) from December 1996 to March 2005



Saleh Abdalla

European Centre for Medium Range Weather Forecasts  
Shinfield Park, Reading, Berkshire RG2 9AX, England

Telephone: U.K. (0118) 949 9703, International (+44 118) 949 9703

Telex 984 7908 ECMWF G, Telefax (0118) 986 9450, e-mail: [abdalla@ecmwf.int](mailto:abdalla@ecmwf.int)

# ■ ECMWF Report on ERS-2 RA for March 2005 ■

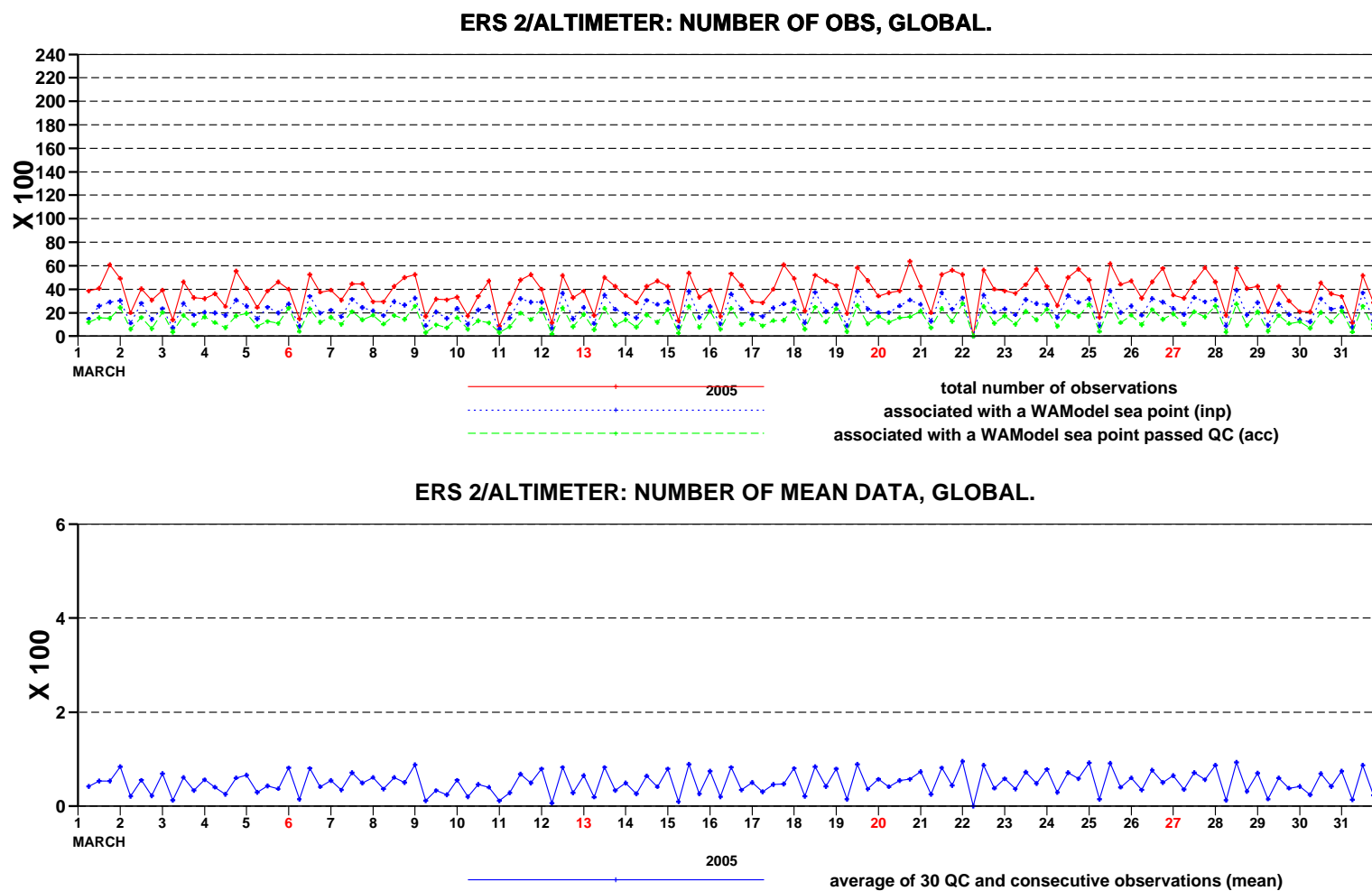
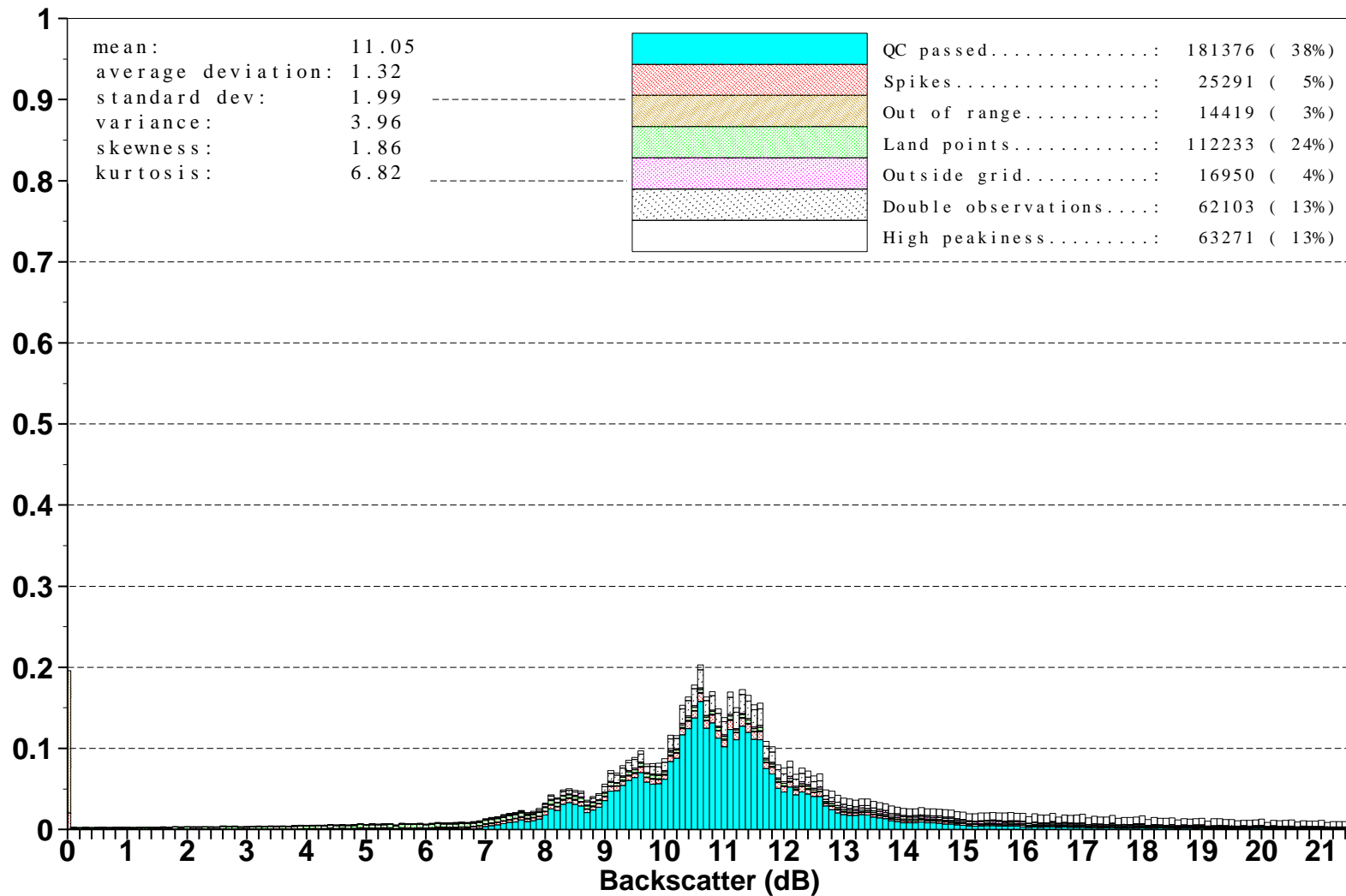


Figure 1: Time series of data reception for ERS-2 Altimeter data for March 2005

# ■ ECMWF Report on ERS-2 RA for March 2005 ■



Saleh Abdalla

European Centre for Medium Range Weather Forecasts  
 Shinfield Park, Reading, Berkshire RG2 9AX, England  
 Telephone: U.K. (0118) 949 9703, International (+44 118) 949 9703  
 Telex 984 7908 ECMWF G, Telefax (0118) 986 9450, e-mail: abdalla@ecmwf.int

# ■ ECMWF Report on ERS-2 RA for March 2005 ■

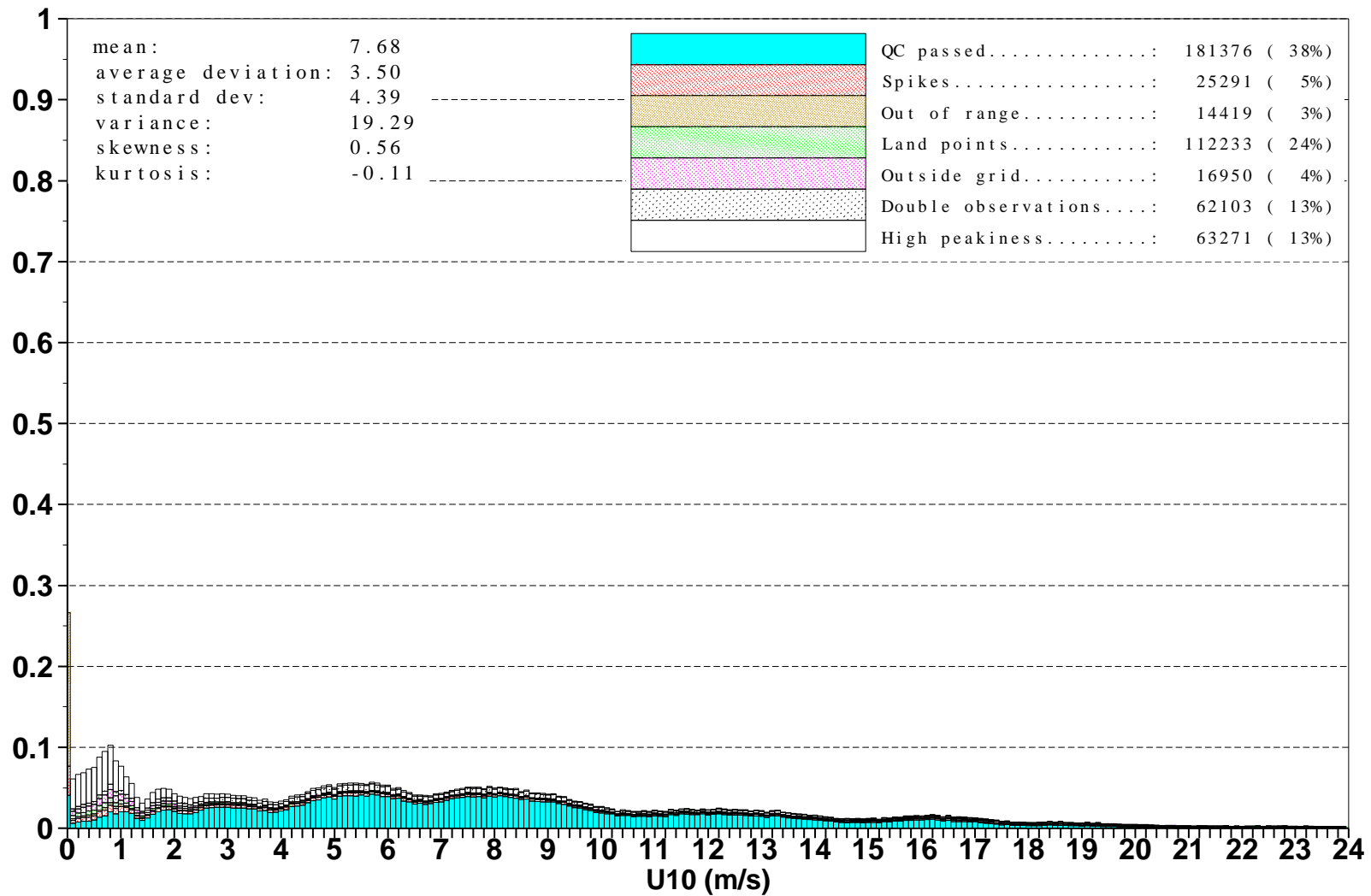


Figure 3: Distribution of the ERS-2 Altimeter wind speeds after QC for March 2005

■  
Saleh Abdalla

European Centre for Medium Range Weather Forecasts  
 Shinfield Park, Reading, Berkshire RG2 9AX, England  
 Telephone: U.K. (0118) 949 9703, International (+44 118) 949 9703  
 Telex 984 7908 ECMWF G, Telefax (0118) 986 9450, e-mail: abdalla@ecmwf.int



# ■ ECMWF Report on ERS-2 RA for March 2005 ■

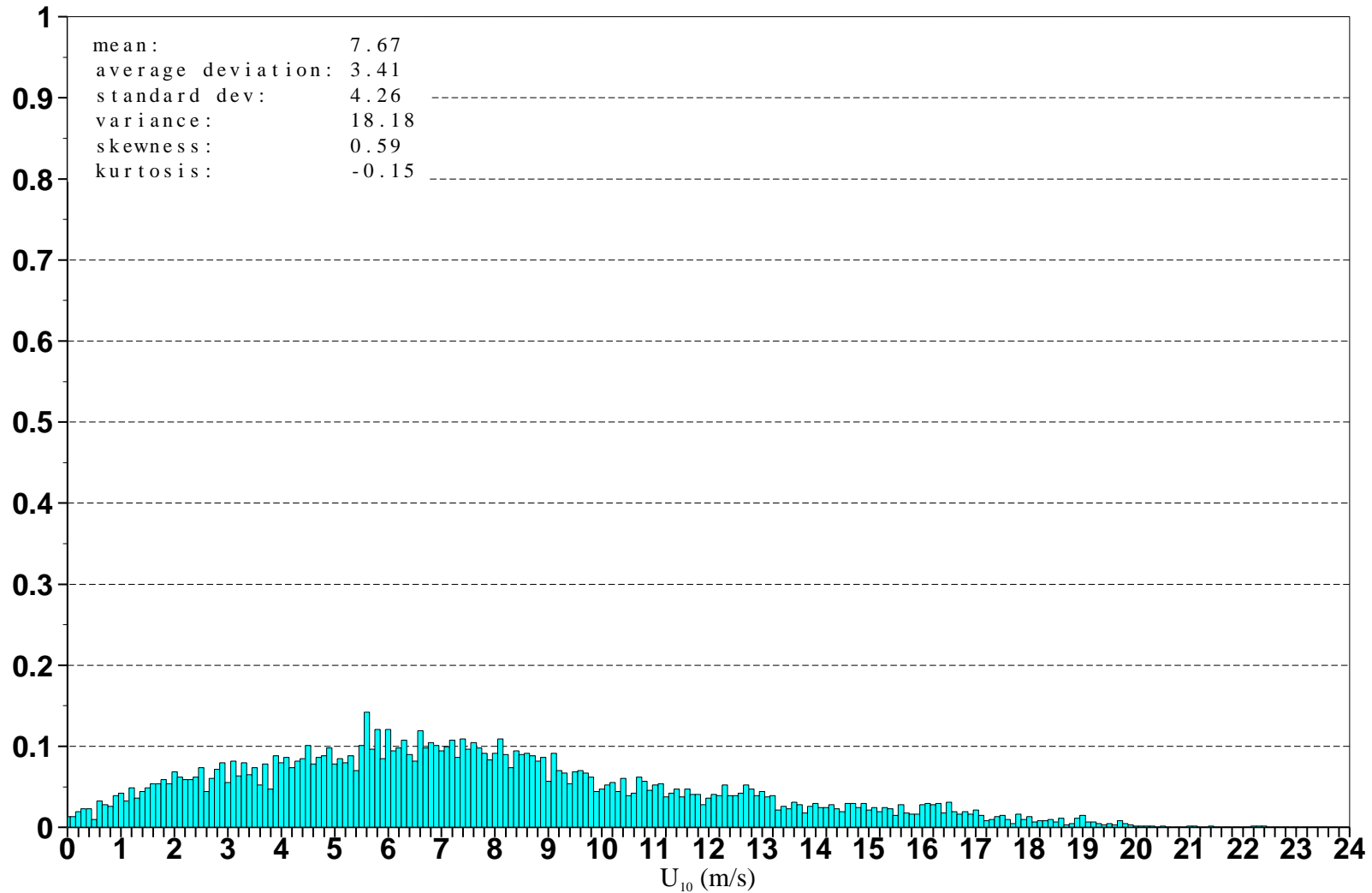


Figure 4: Distribution of ERS-2 Altimeter wind speeds after along track averaging for March 2005



Saleh Abdalla

European Centre for Medium Range Weather Forecasts  
Shinfield Park, Reading, Berkshire RG2 9AX, England

Telephone: U.K. (0118) 949 9703, International (+44 118) 949 9703

Telex 984 7908 ECMWF G, Telefax (0118) 986 9450, e-mail: abdalla@ecmwf.int

# ■ ECMWF Report on ERS-2 RA for March 2005 ■

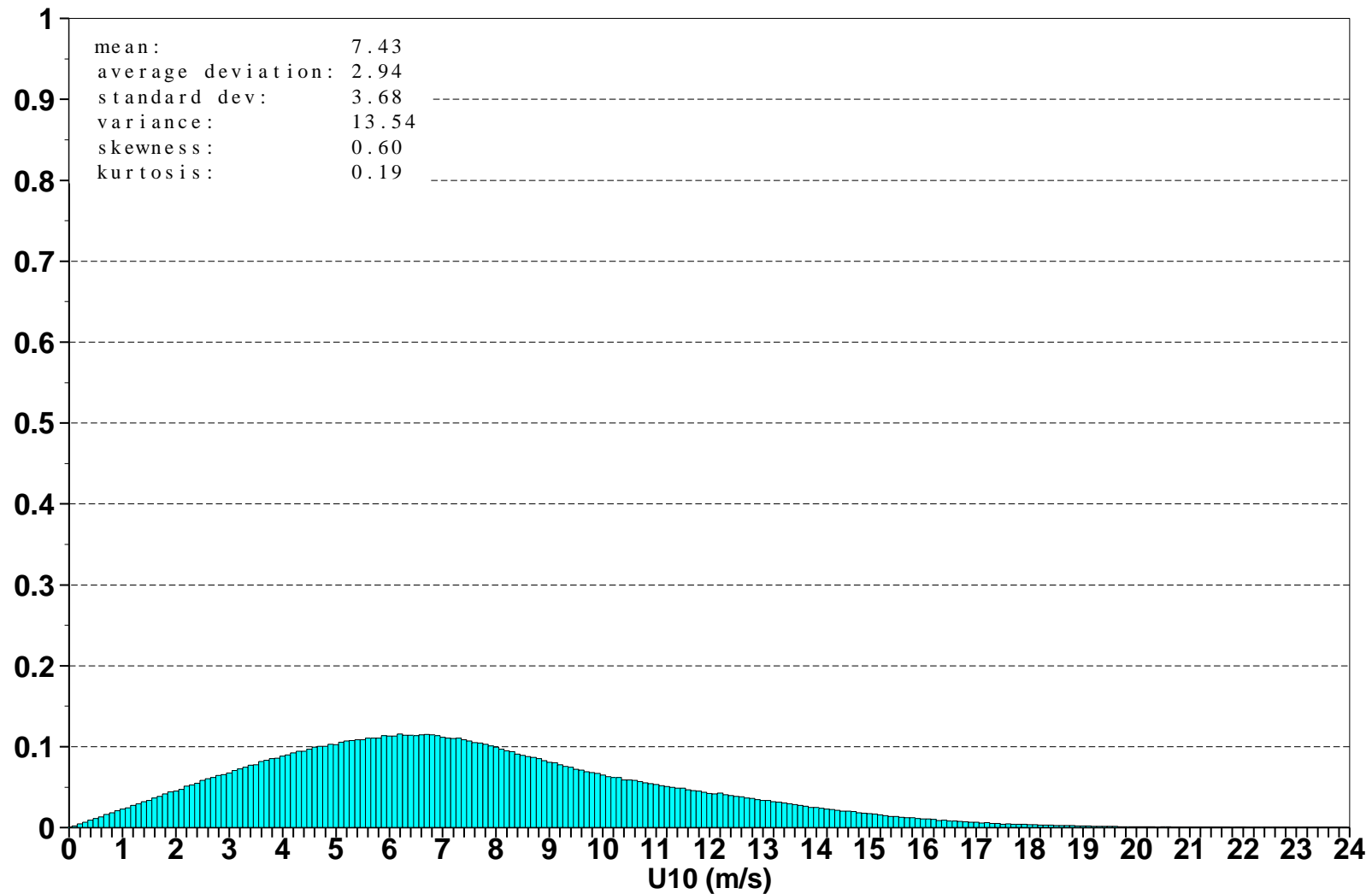


Figure 5: Global distribution of ECMWF ocean surface wind speeds for March 2005



Saleh Abdalla

European Centre for Medium Range Weather Forecasts  
Shinfield Park, Reading, Berkshire RG2 9AX, England

Telephone: U.K. (0118) 949 9703, International (+44 118) 949 9703

Telex 984 7908 ECMWF G, Telefax (0118) 986 9450, e-mail: abdalla@ecmwf.int

# ■ ECMWF Report on ERS-2 RA for March 2005 ■

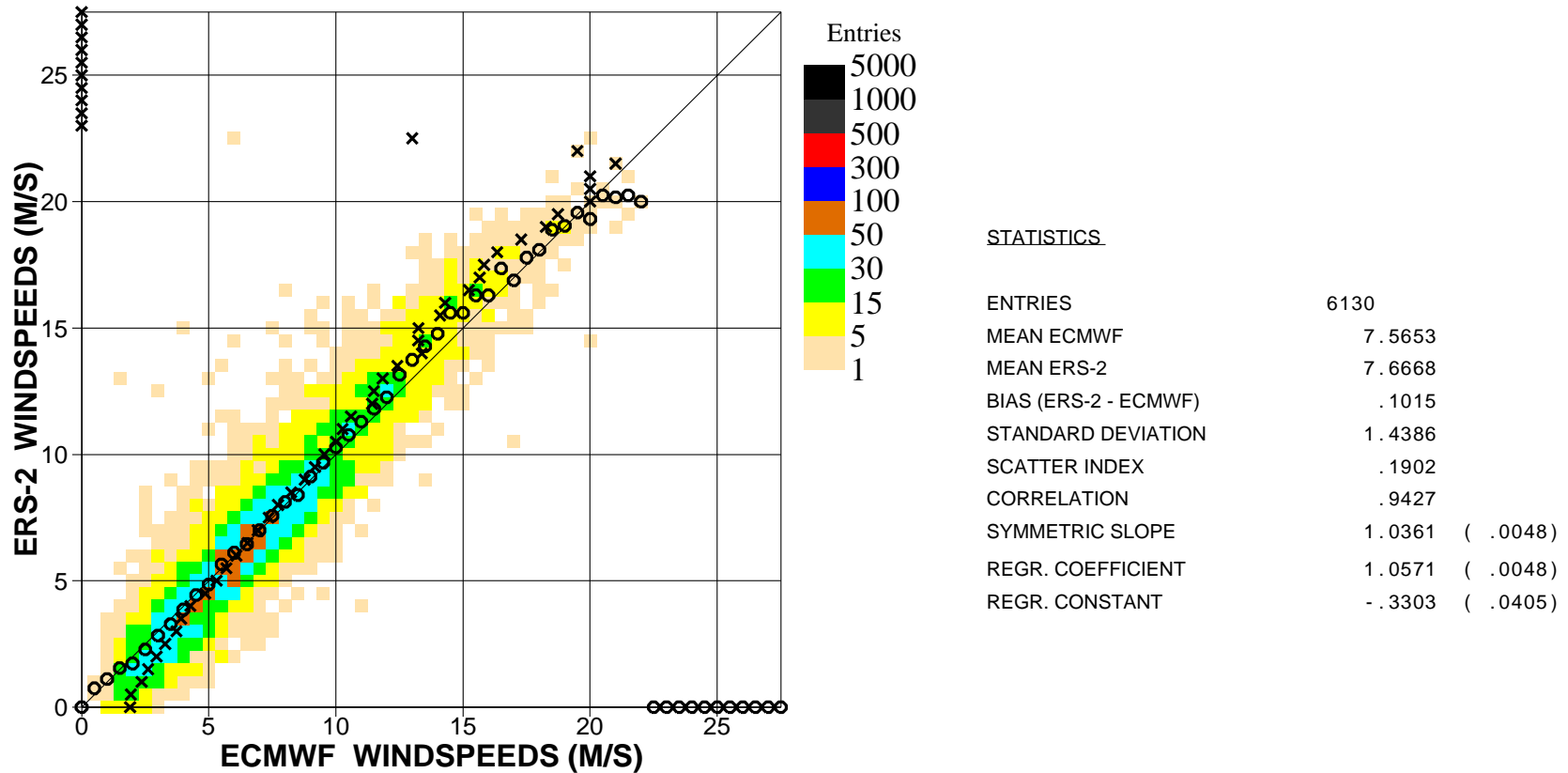


Figure 6. Comparison of ECMWF wind speed results with ERS2 Altimeter wind speed data for March 2005 (global)

■  
Saleh Abdalla

European Centre for Medium Range Weather Forecasts  
 Shinfield Park, Reading, Berkshire RG2 9AX, England  
 Telephone: U.K. (0118) 949 9703, International (+44 118) 949 9703  
 Telex 984 7908 ECMWF G, Telefax (0118) 986 9450, e-mail: abdalla@ecmwf.int

# ■ ECMWF Report on ERS-2 RA for March 2005 ■

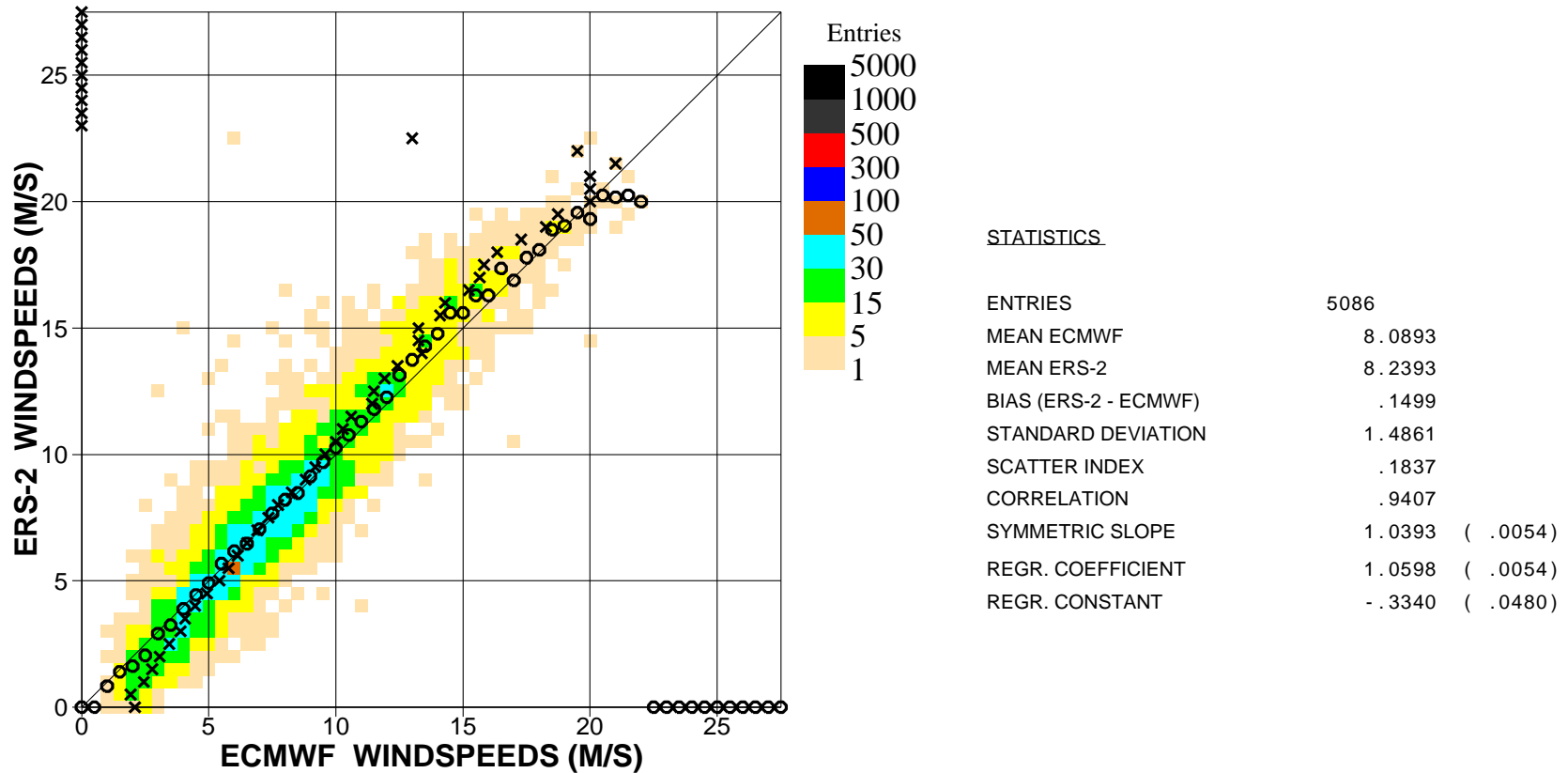


Figure 7. Comparison of ECMWF wind speed results with ERS2 Altimeter wind speed data for March 2005 (n.hem.)

■  
Saleh Abdalla

European Centre for Medium Range Weather Forecasts  
Shinfield Park, Reading, Berkshire RG2 9AX, England  
Telephone: U.K. (0118) 949 9703, International (+44 118) 949 9703  
Telex 984 7908 ECMWF G, Telefax (0118) 986 9450, e-mail: abdalla@ecmwf.int

# ECMWF Report on ERS-2 RA for March 2005

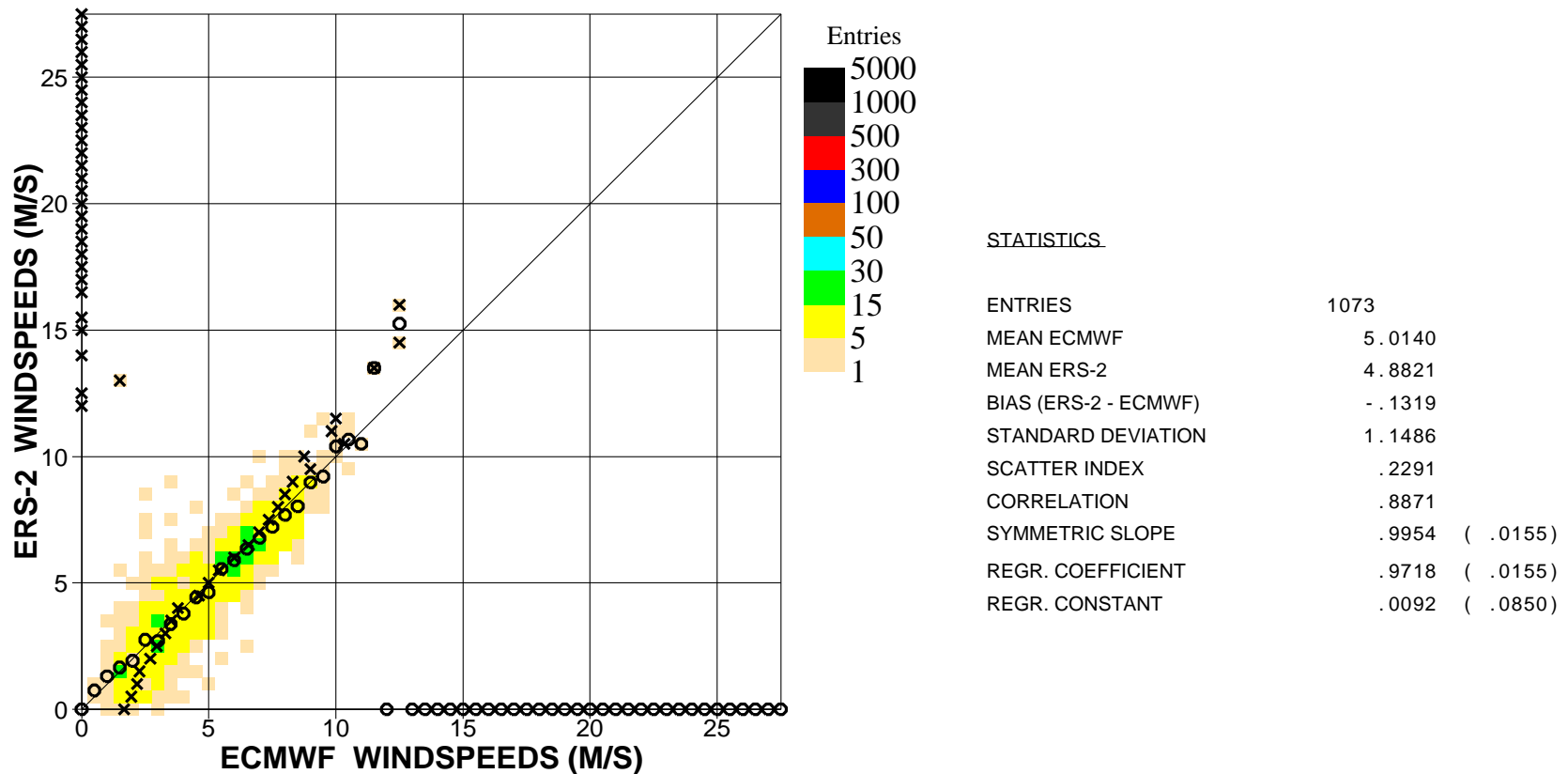


Figure 8. Comparison of ECMWF wind speed results with ERS2 Altimeter wind speed data for March 2005 (tropics)

Saleh Abdalla

European Centre for Medium Range Weather Forecasts  
 Shinfield Park, Reading, Berkshire RG2 9AX, England  
 Telephone: U.K. (0118) 949 9703, International (+44 118) 949 9703  
 Telex 984 7908 ECMWF G, Telefax (0118) 986 9450, e-mail: abdalla@ecmwf.int

# ■ ECMWF Report on ERS-2 RA for March 2005 ■

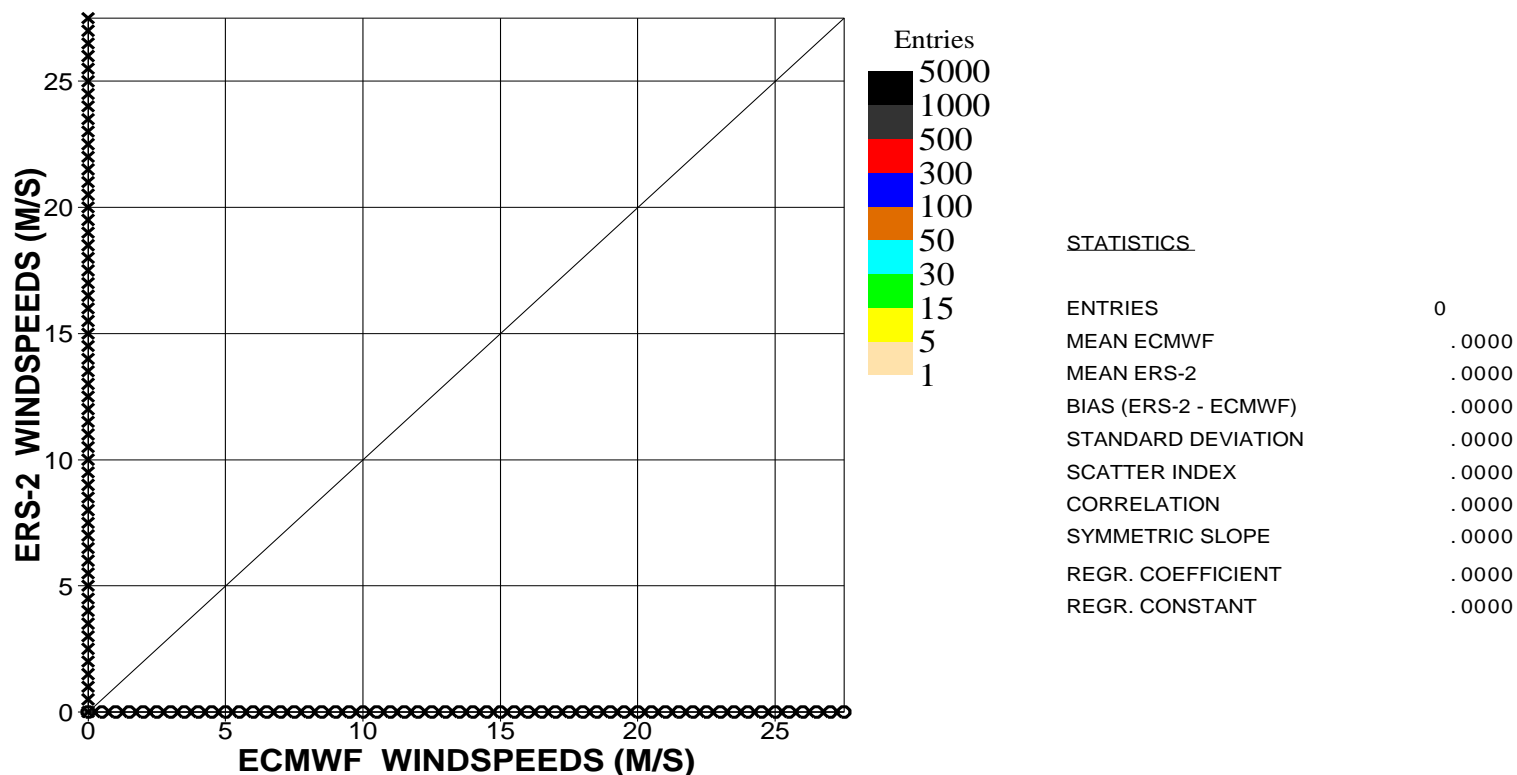


Figure 9. Comparison of ECMWF wind speed results with ERS2 Altimeter wind speed data for March 2005 (s.hem.)

■  
Saleh Abdalla

European Centre for Medium Range Weather Forecasts  
Shinfield Park, Reading, Berkshire RG2 9AX, England  
Telephone: U.K. (0118) 949 9703, International (+44 118) 949 9703  
Telex 984 7908 ECMWF G, Telefax (0118) 986 9450, e-mail: abdalla@ecmwf.int

# ■ ECMWF Report on ERS-2 RA for March 2005 ■

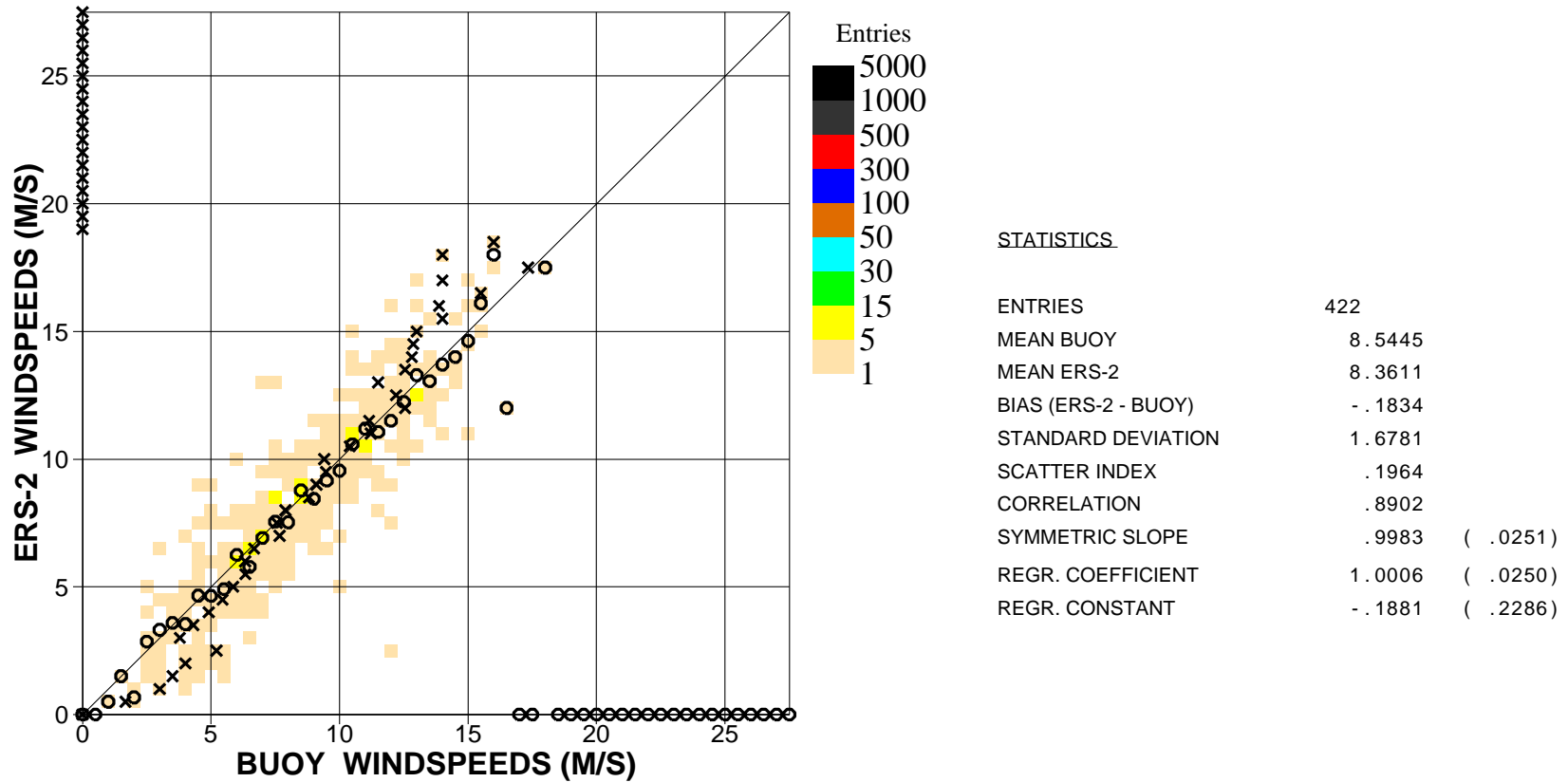


Figure 10. Comparison of buoy wind speed observations with ERS2 Altimeter wind speed data for March 2005 (global)

■  
Saleh Abdalla

European Centre for Medium Range Weather Forecasts  
Shinfield Park, Reading, Berkshire RG2 9AX, England  
Telephone: U.K. (0118) 949 9703, International (+44 118) 949 9703  
Telex 984 7908 ECMWF G, Telefax (0118) 986 9450, e-mail: abdalla@ecmwf.int

# ■ ECMWF Report on ERS-2 RA for March 2005 ■

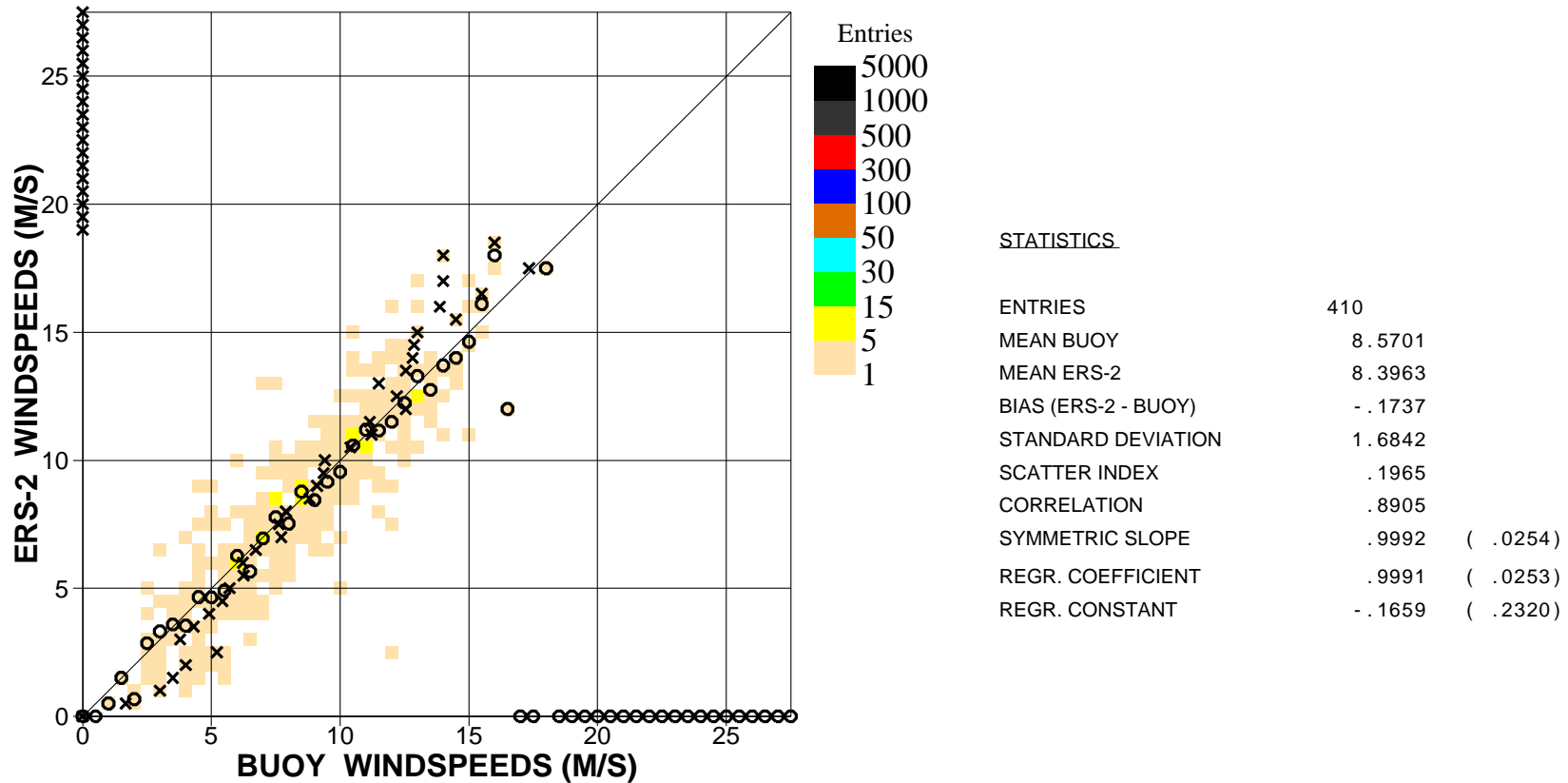


Figure 11. Comparison of buoy wind speed observations with ERS2 Altimeter wind speed data for March 2005 (n.hem.)

■  
Saleh Abdalla

European Centre for Medium Range Weather Forecasts  
Shinfield Park, Reading, Berkshire RG2 9AX, England  
Telephone: U.K. (0118) 949 9703, International (+44 118) 949 9703  
Telex 984 7908 ECMWF G, Telefax (0118) 986 9450, e-mail: abdalla@ecmwf.int



# ECMWF Report on ERS-2 RA for March 2005

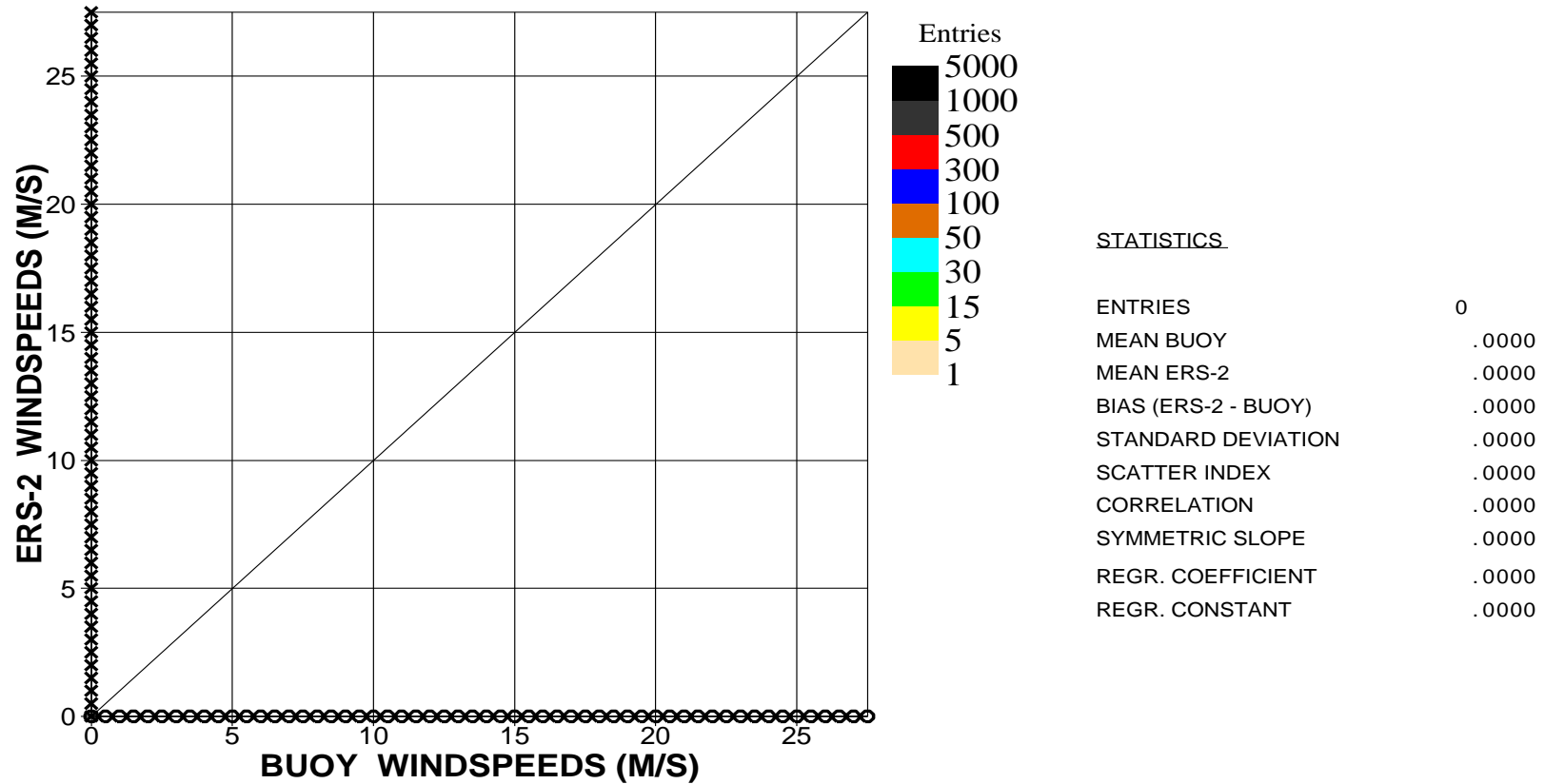


Figure 12. Comparison of buoy wind speed observations with ERS2 Altimeter wind speed data for March 2005 (hawaii)

Saleh Abdalla

European Centre for Medium Range Weather Forecasts  
 Shinfield Park, Reading, Berkshire RG2 9AX, England  
 Telephone: U.K. (0118) 949 9703, International (+44 118) 949 9703  
 Telex 984 7908 ECMWF G, Telefax (0118) 986 9450, e-mail: abdalla@ecmwf.int

# ECMWF Report on ERS-2 RA for March 2005

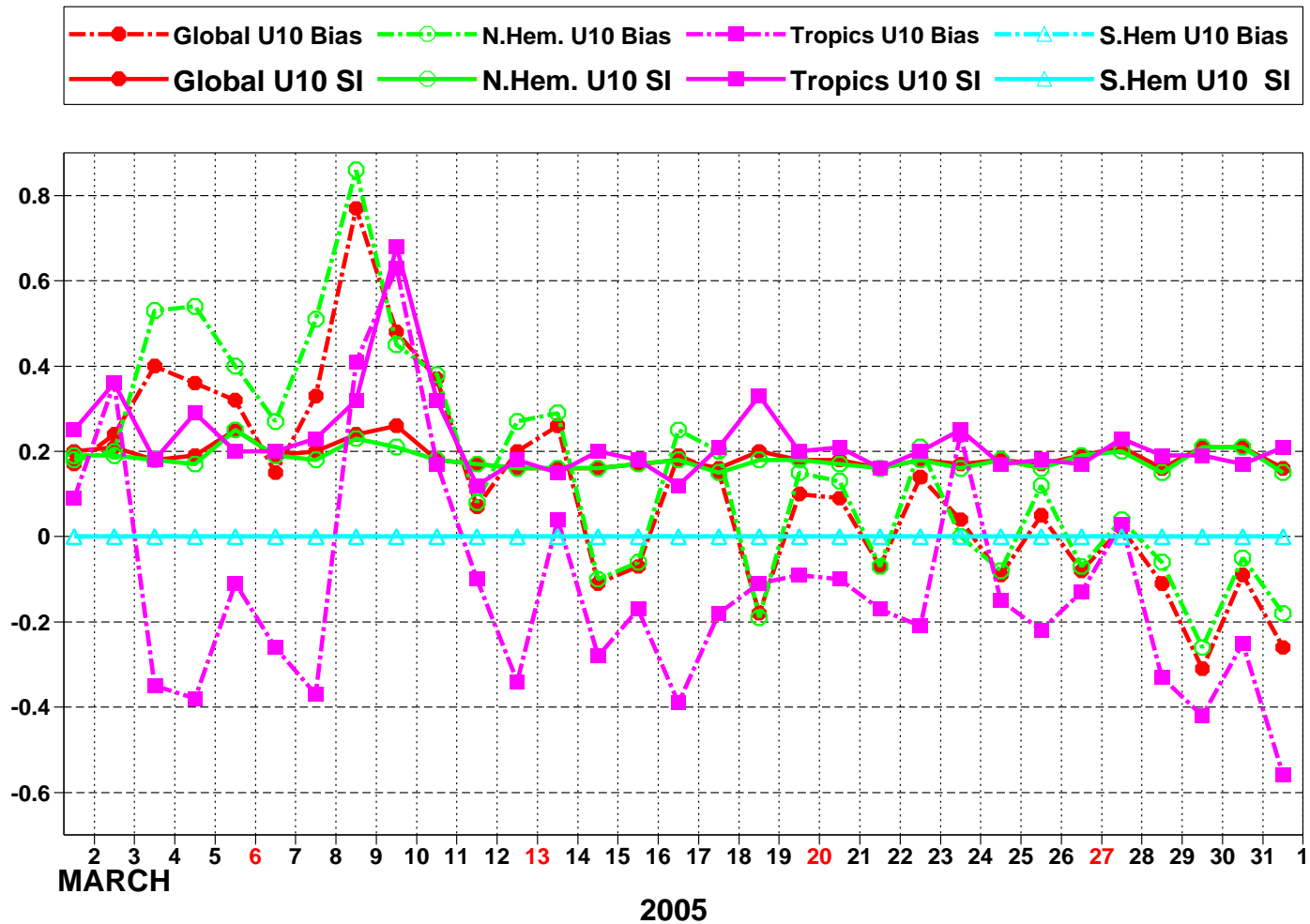


Figure 13: ERS-2 Altimeter wind speeds: Timeseries of bias (ERS-2 - model) and scatter index (SI)

# ■ ECMWF Report on ERS-2 RA for March 2005 ■

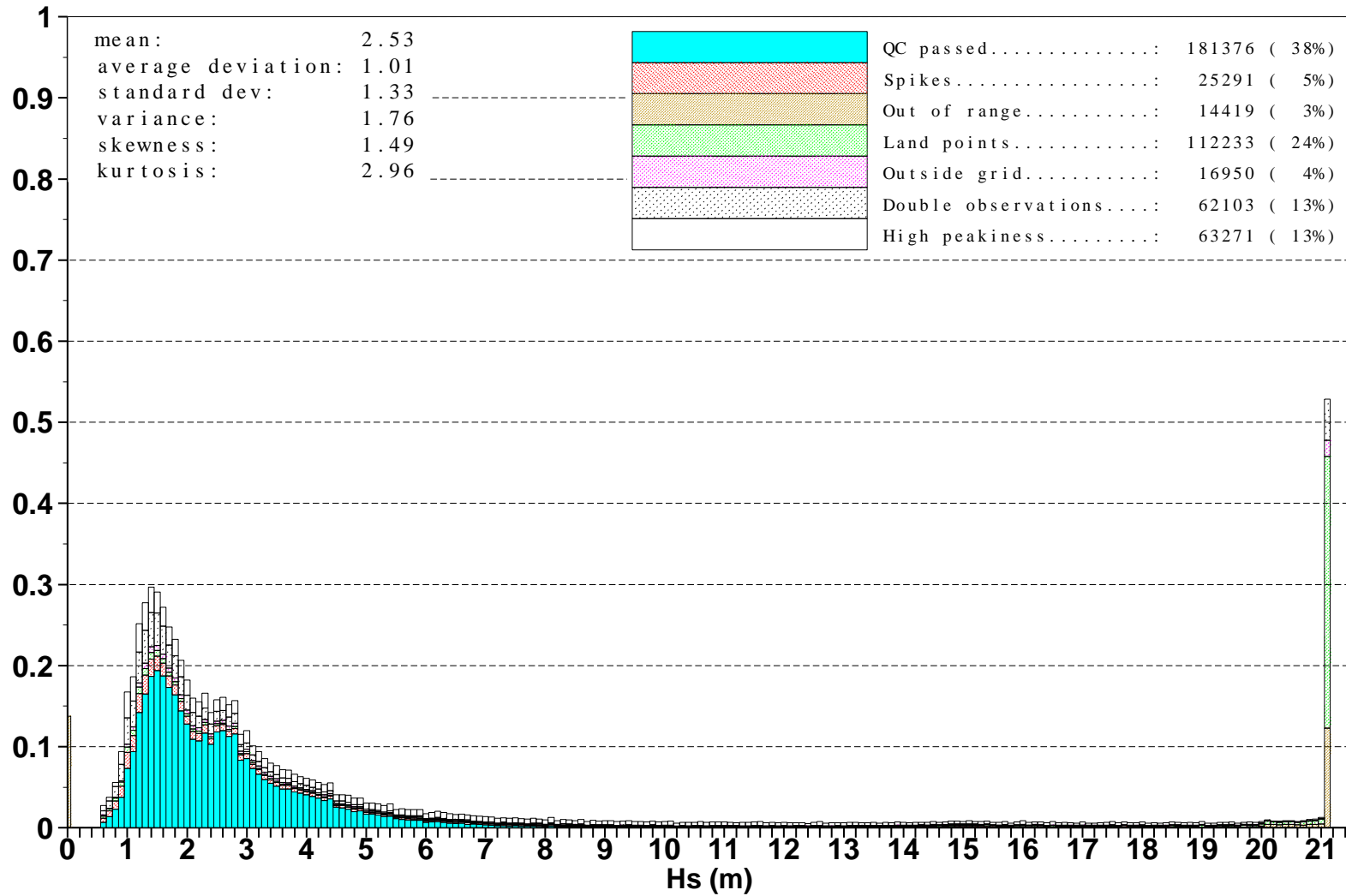


Figure 14: Distribution of the ERS-2 Altimeter wave heights after QC for March 2005



Saleh Abdalla

European Centre for Medium Range Weather Forecasts  
 Shinfield Park, Reading, Berkshire RG2 9AX, England  
 Telephone: U.K. (0118) 949 9703, International (+44 118) 949 9703  
 Telex 984 7908 ECMWF G, Telefax (0118) 986 9450, e-mail: abdalla@ecmwf.int

# ■ ECMWF Report on ERS-2 RA for March 2005 ■

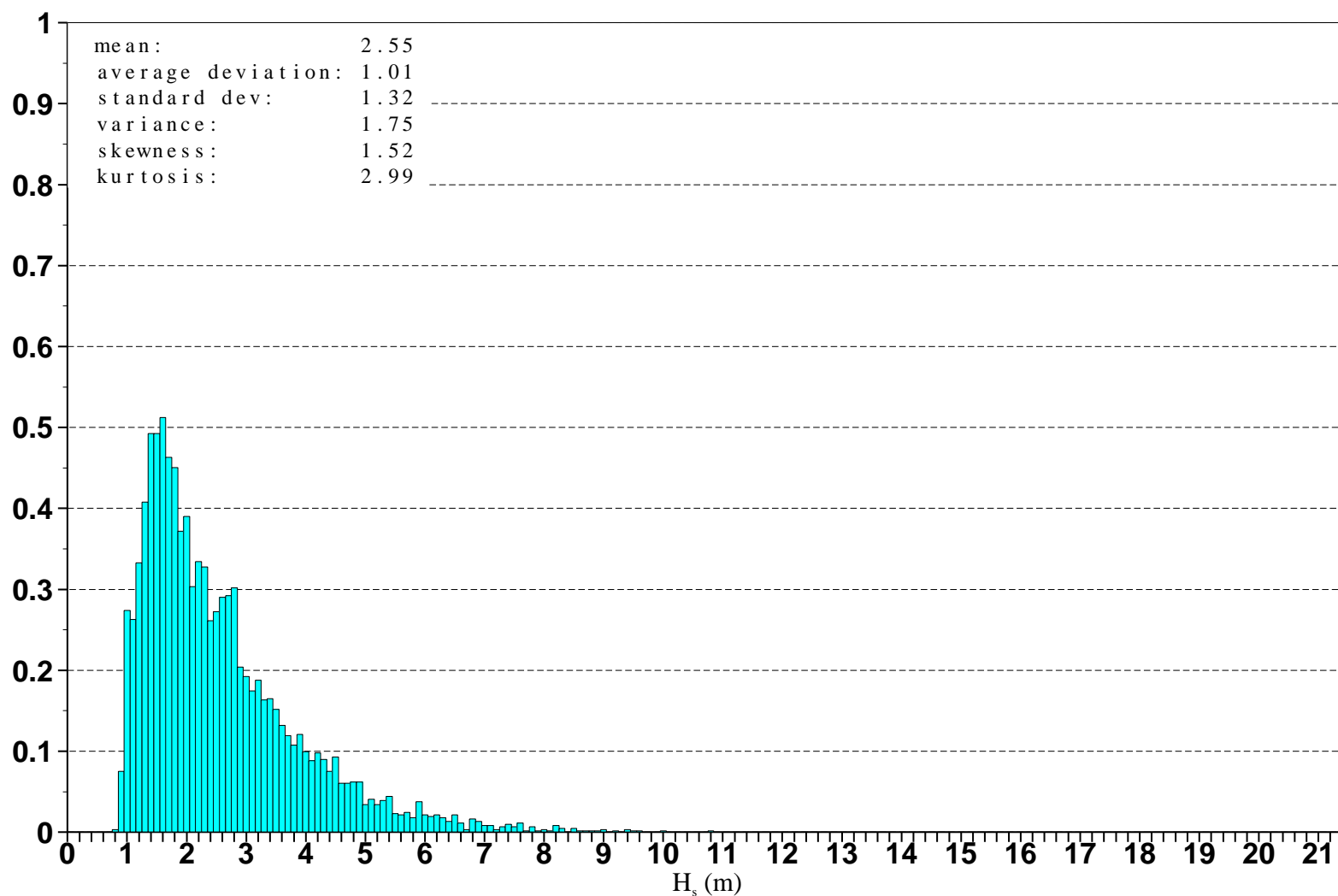


Figure 15: Distribution of ERS-2 Altimeter wave heights after along track averaging for March 2005



Saleh Abdalla

European Centre for Medium Range Weather Forecasts  
Shinfield Park, Reading, Berkshire RG2 9AX, England  
Telephone: U.K. (0118) 949 9703, International (+44 118) 949 9703  
Telex 984 7908 ECMWF G, Telefax (0118) 986 9450, e-mail: abdalla@ecmwf.int

# ■ ECMWF Report on ERS-2 RA for March 2005 ■

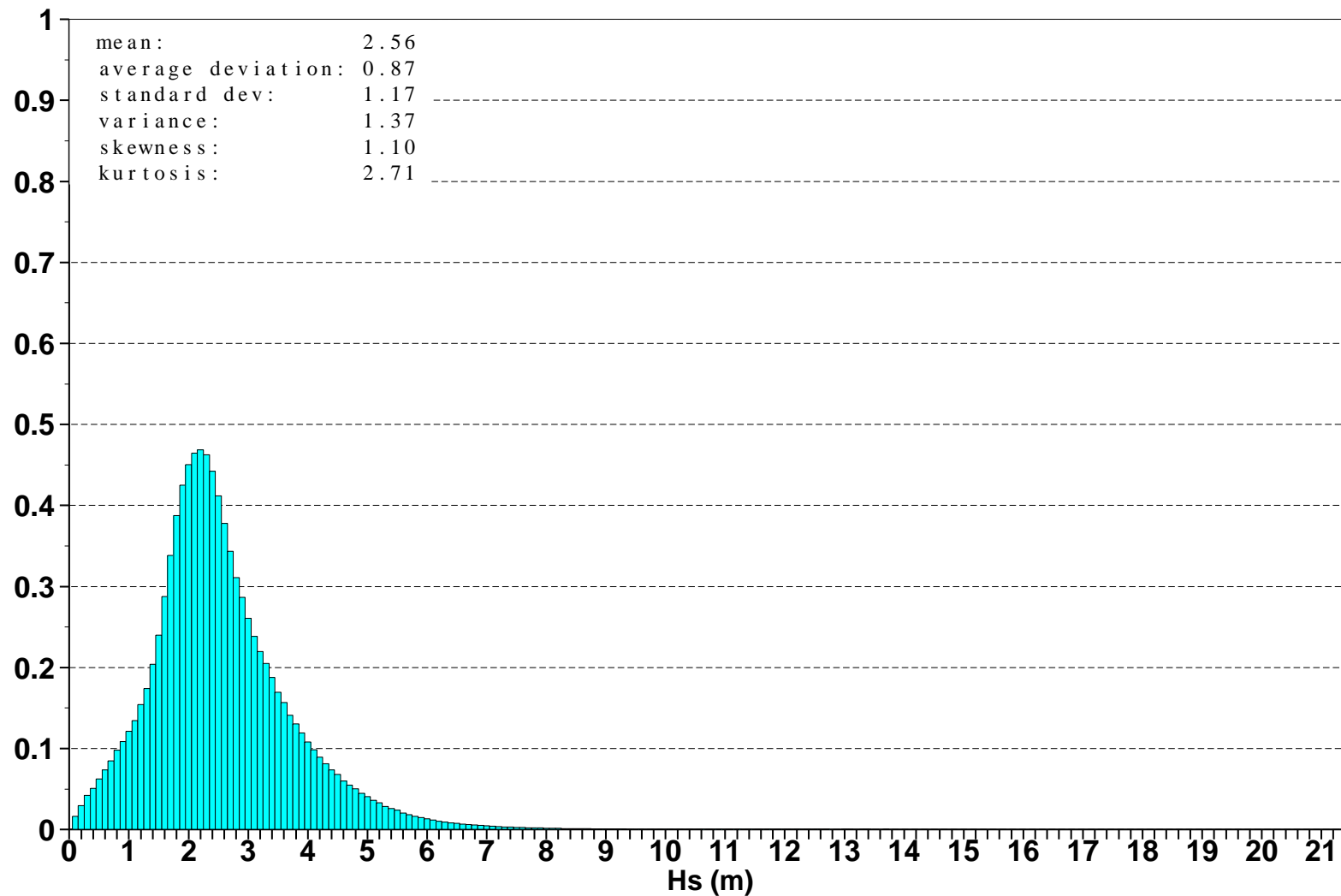


Figure 16: Global distribution of ECMWF wave heights for March 2005



Saleh Abdalla

European Centre for Medium Range Weather Forecasts  
Shinfield Park, Reading, Berkshire RG2 9AX, England  
Telephone: U.K. (0118) 949 9703, International (+44 118) 949 9703  
Telex 984 7908 ECMWF G, Telefax (0118) 986 9450, e-mail: abdalla@ecmwf.int

# ECMWF Report on ERS-2 RA for March 2005

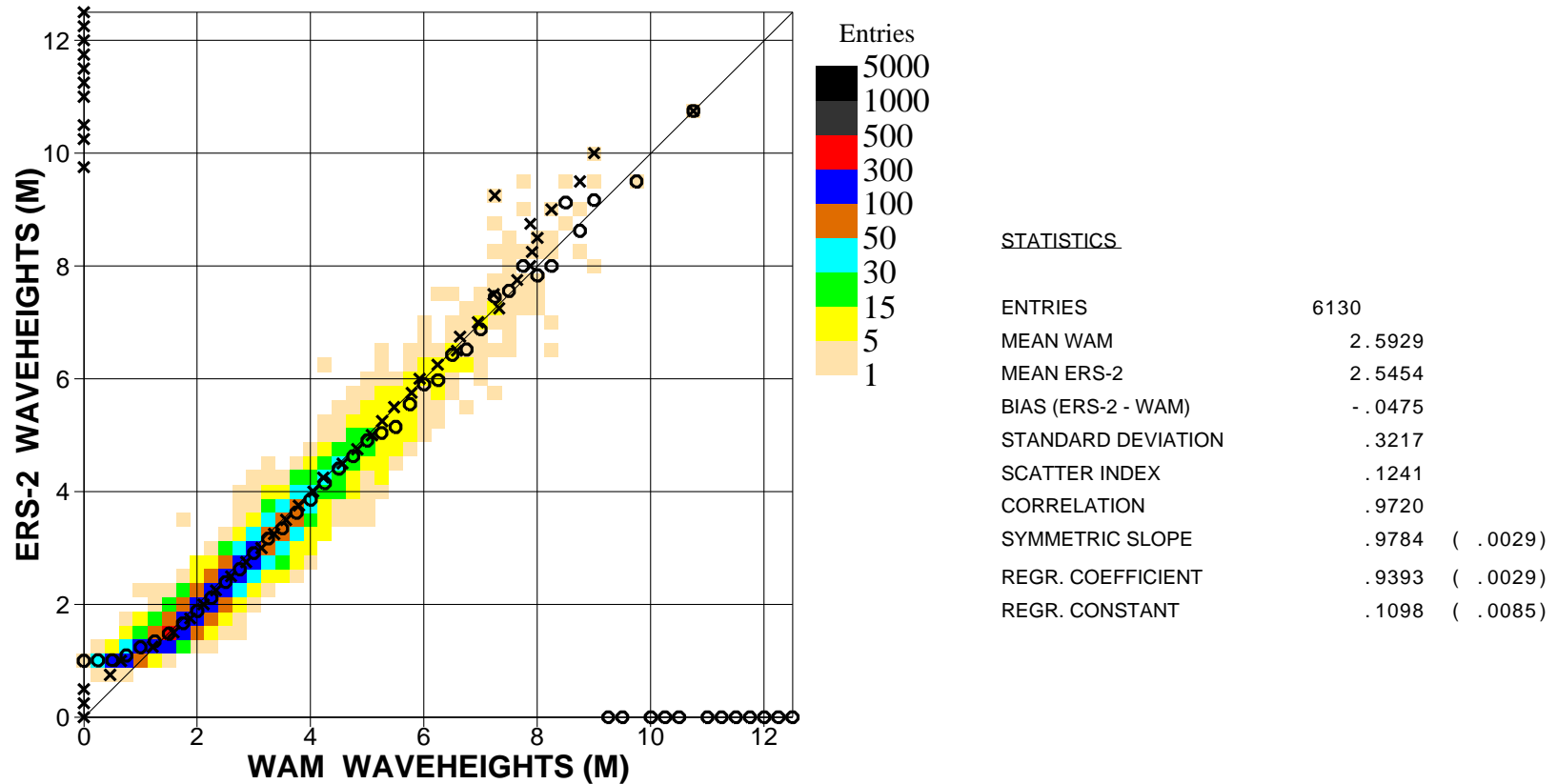


Figure 17. Comparison of ECMWF wave height results with ERS2 Altimeter wave height data for March 2005 (global)

Saleh Abdalla

European Centre for Medium Range Weather Forecasts  
 Shinfield Park, Reading, Berkshire RG2 9AX, England  
 Telephone: U.K. (0118) 949 9703, International (+44 118) 949 9703  
 Telex 984 7908 ECMWF G, Telefax (0118) 986 9450, e-mail: abdalla@ecmwf.int

# ECMWF Report on ERS-2 RA for March 2005

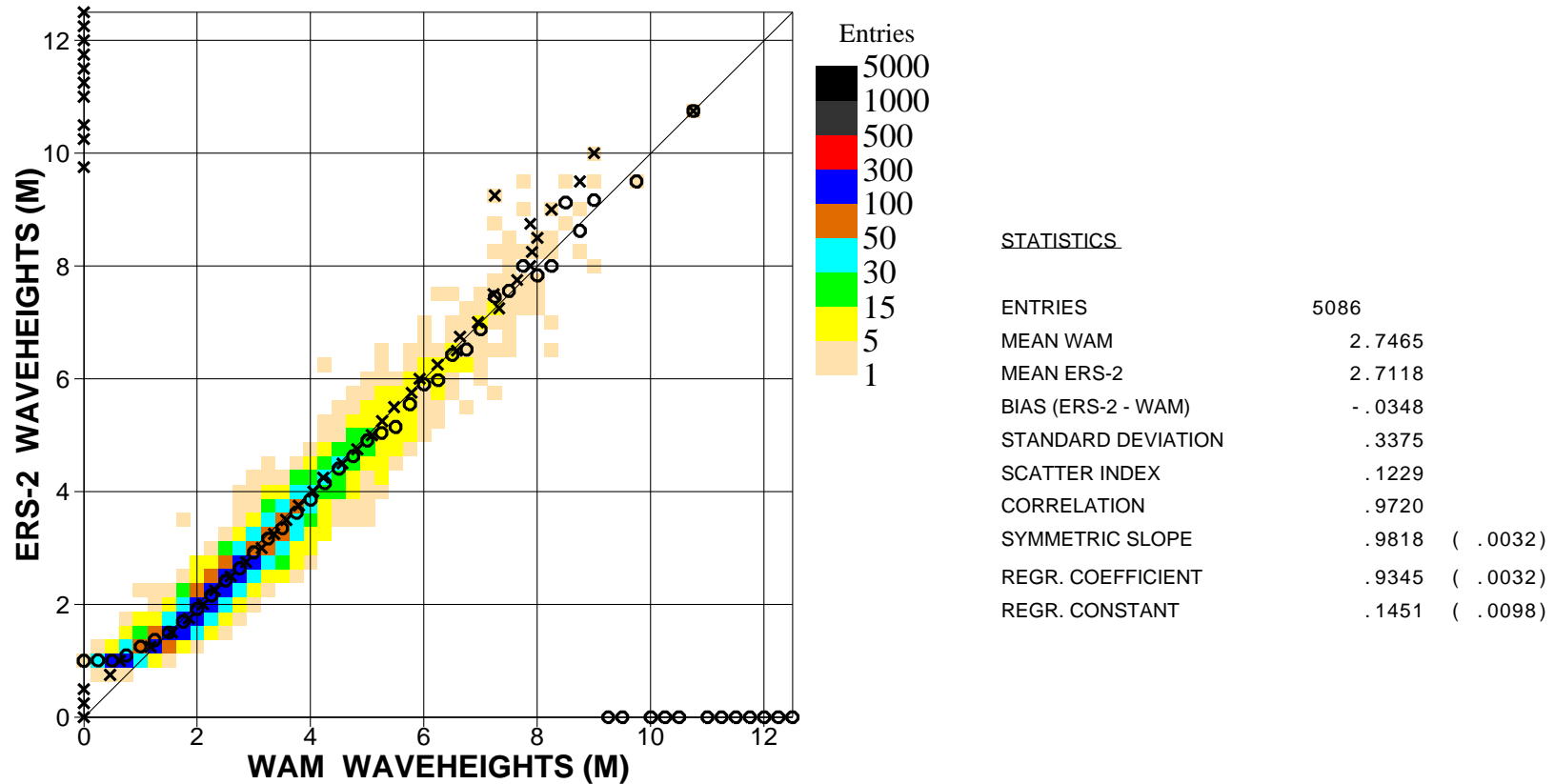


Figure 18. Comparison of ECMWF wave height results with ERS2 Altimeter wave height data for March 2005 (n.hem.)

# ECMWF Report on ERS-2 RA for March 2005

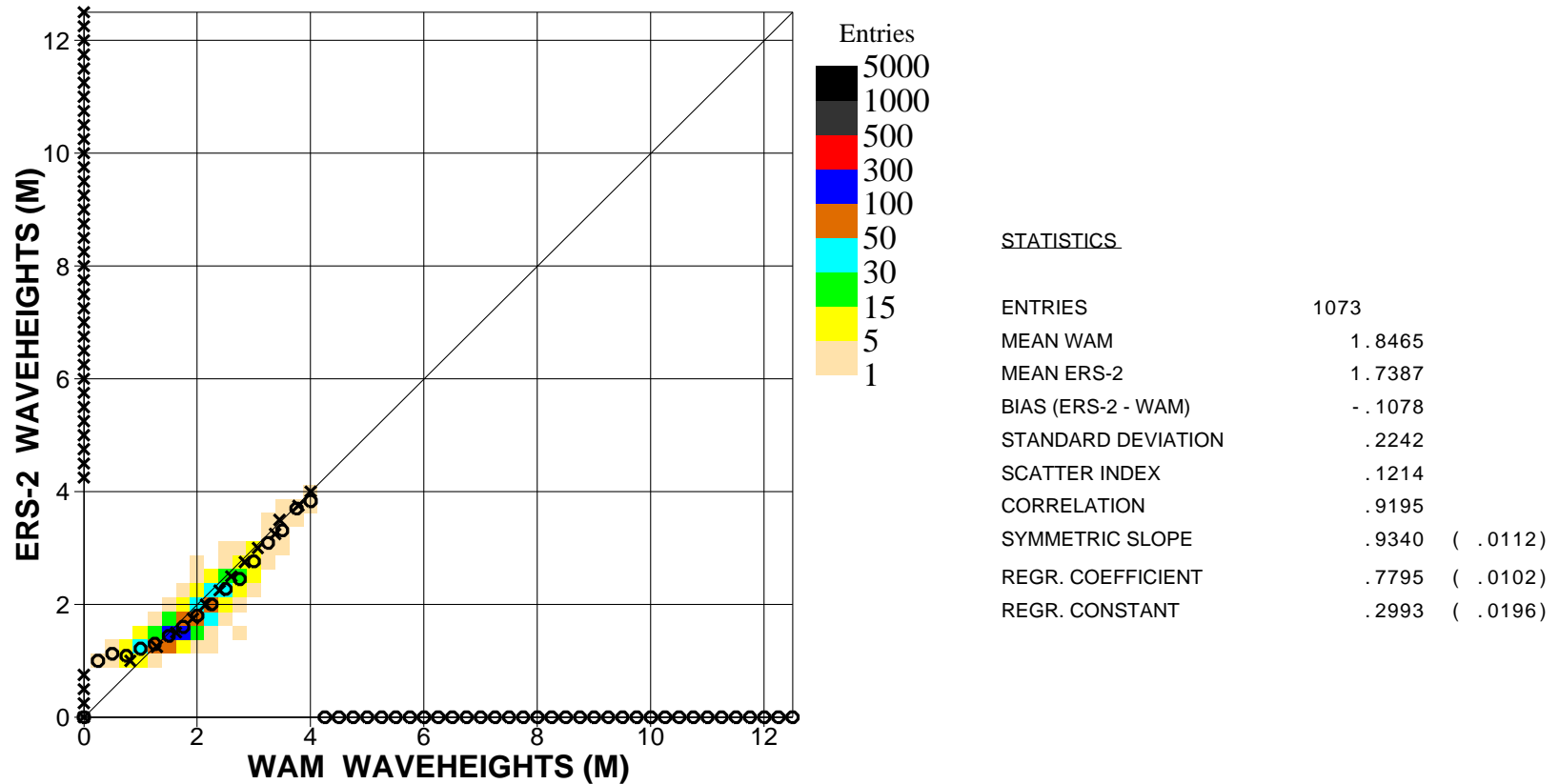


Figure 19. Comparison of ECMWF wave height results with ERS2 Altimeter wave height data for March 2005 (tropics)

Saleh Abdalla

European Centre for Medium Range Weather Forecasts  
 Shinfield Park, Reading, Berkshire RG2 9AX, England  
 Telephone: U.K. (0118) 949 9703, International (+44 118) 949 9703  
 Telex 984 7908 ECMWF G, Telefax (0118) 986 9450, e-mail: abdalla@ecmwf.int



# ■ ECMWF Report on ERS-2 RA for March 2005 ■

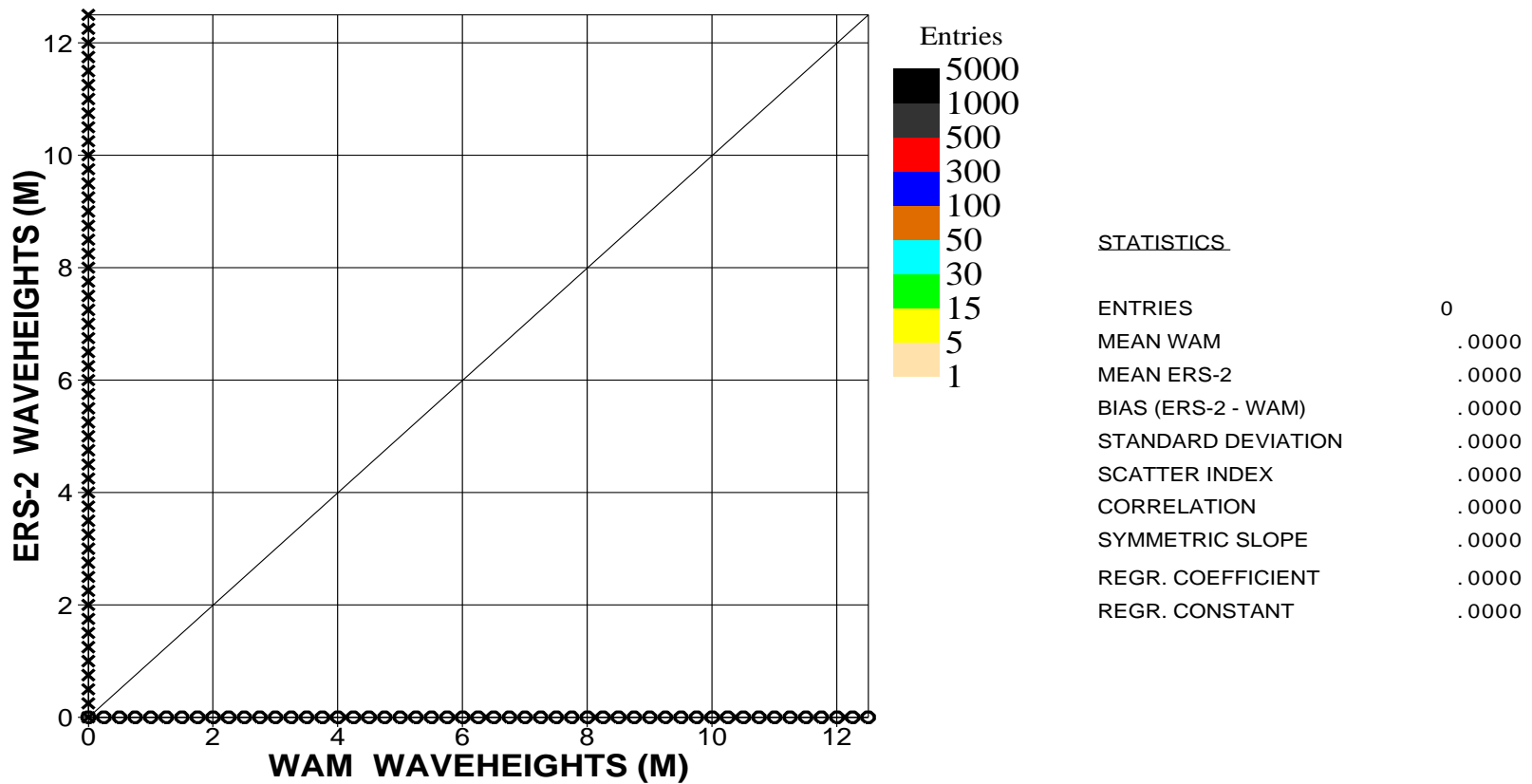


Figure 20. Comparison of ECMWF wave height results with ERS2 Altimeter wave height data for March 2005 (s.hem.)

■  
Saleh Abdalla

European Centre for Medium Range Weather Forecasts  
Shinfield Park, Reading, Berkshire RG2 9AX, England  
Telephone: U.K. (0118) 949 9703, International (+44 118) 949 9703  
Telex 984 7908 ECMWF G, Telefax (0118) 986 9450, e-mail: abdalla@ecmwf.int

# ECMWF Report on ERS-2 RA for March 2005

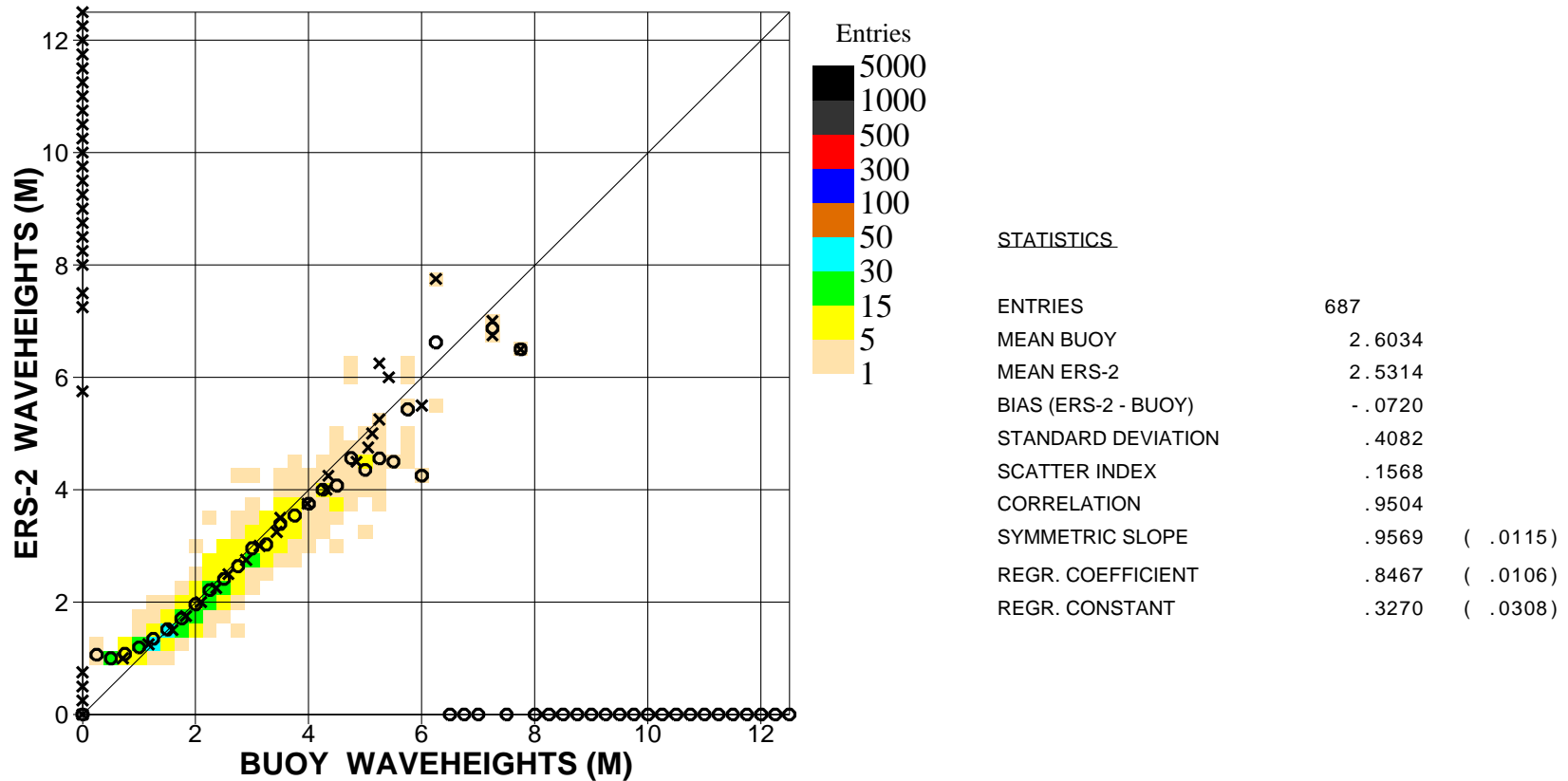


Figure 21. Comparison of buoy wave height observations with ERS2 Altimeter wave height data for March 2005 (global)

Saleh Abdalla

European Centre for Medium Range Weather Forecasts  
 Shinfield Park, Reading, Berkshire RG2 9AX, England  
 Telephone: U.K. (0118) 949 9703, International (+44 118) 949 9703  
 Telex 984 7908 ECMWF G, Telefax (0118) 986 9450, e-mail: abdalla@ecmwf.int

# ECMWF Report on ERS-2 RA for March 2005

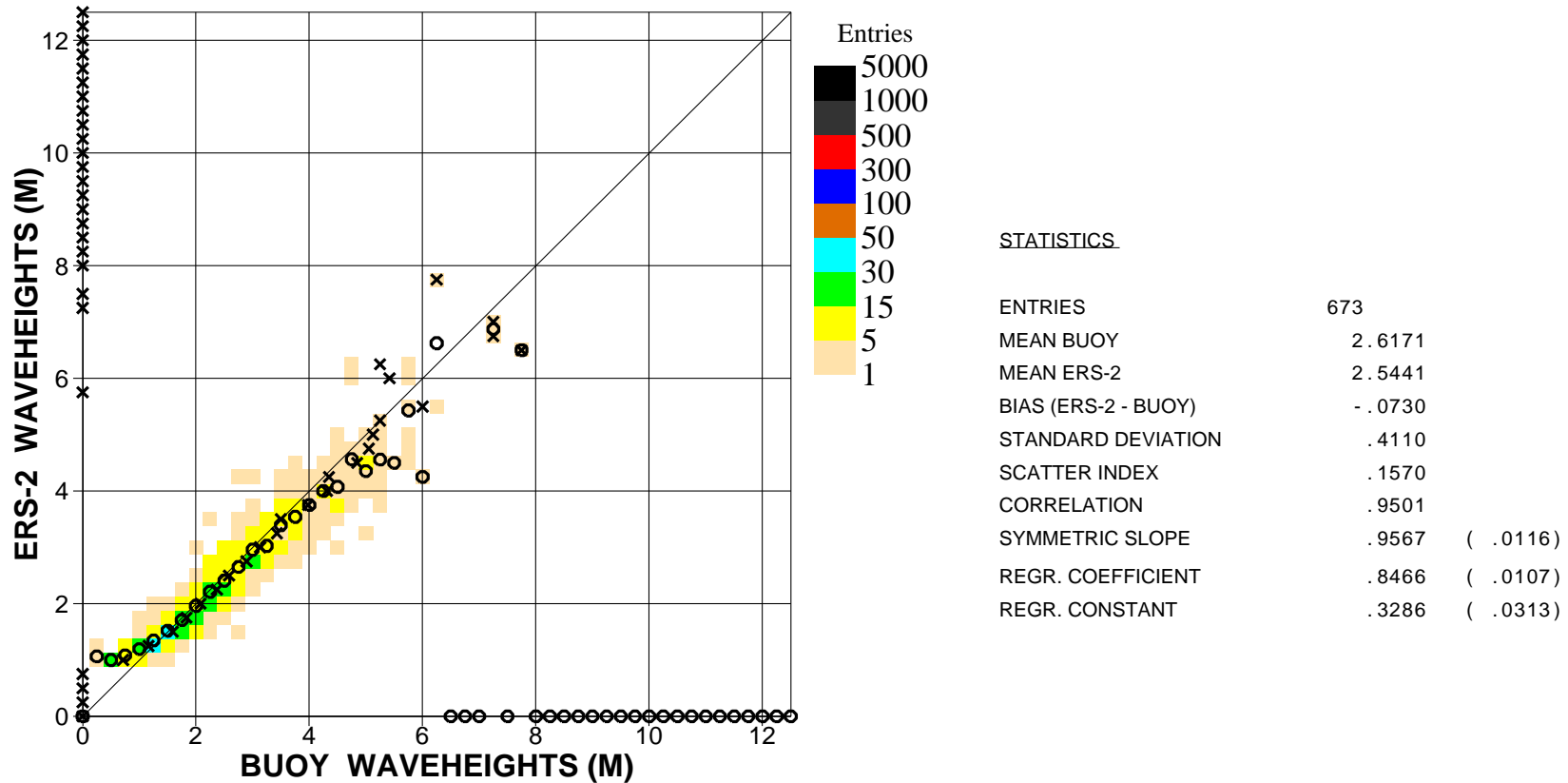


Figure 22. Comparison of buoy wave height observations with ERS2 Altimeter wave height data for March 2005 (n.hem.)

Saleh Abdalla

European Centre for Medium Range Weather Forecasts  
 Shinfield Park, Reading, Berkshire RG2 9AX, England  
 Telephone: U.K. (0118) 949 9703, International (+44 118) 949 9703  
 Telex 984 7908 ECMWF G, Telefax (0118) 986 9450, e-mail: abdalla@ecmwf.int

# ECMWF Report on ERS-2 RA for March 2005

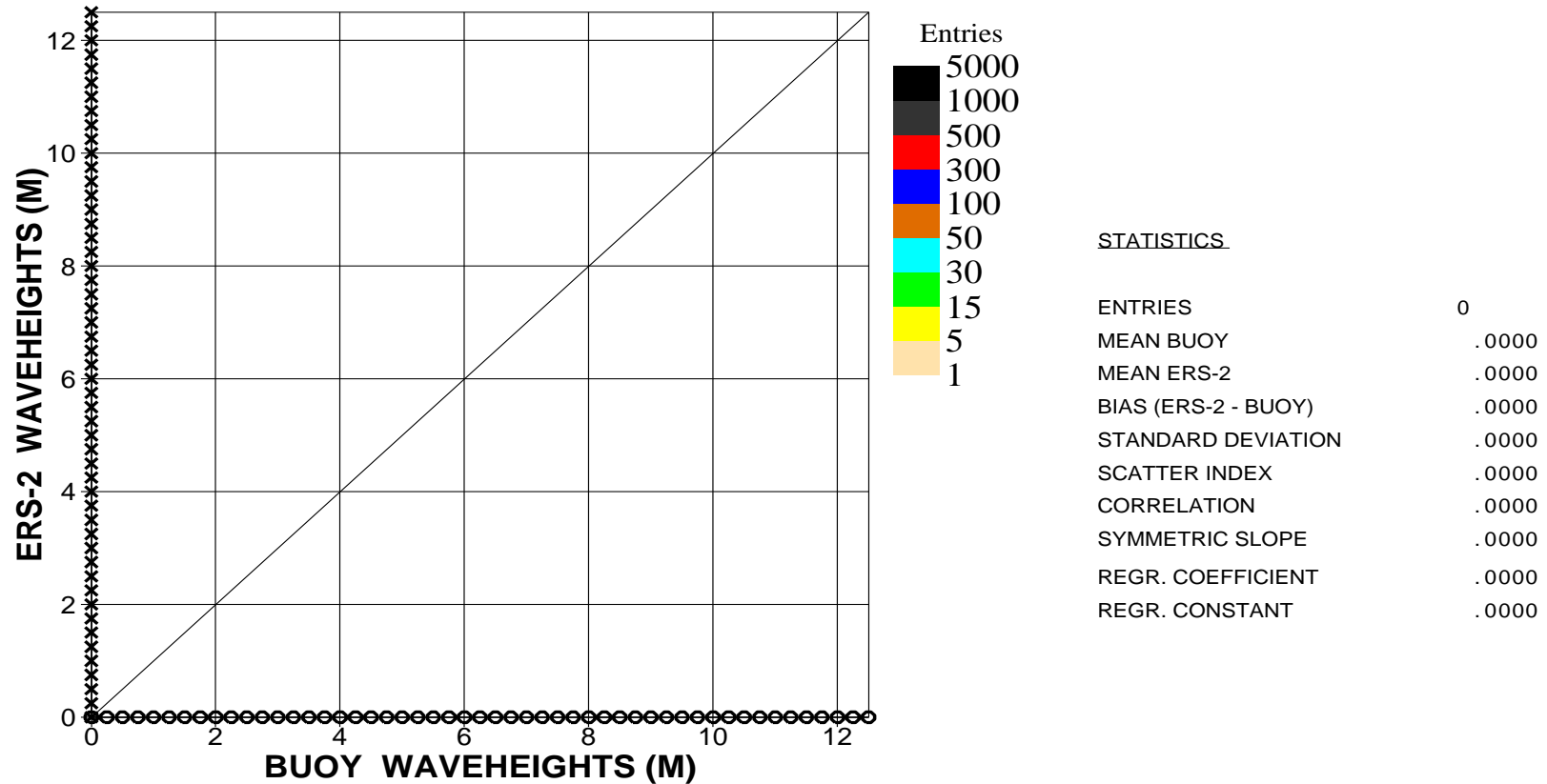


Figure 23. Comparison of buoy wave height observations with ERS2 Altimeter wave height data for March 2005 (hawaii)



# ECMWF Report on ERS-2 RA for March 2005

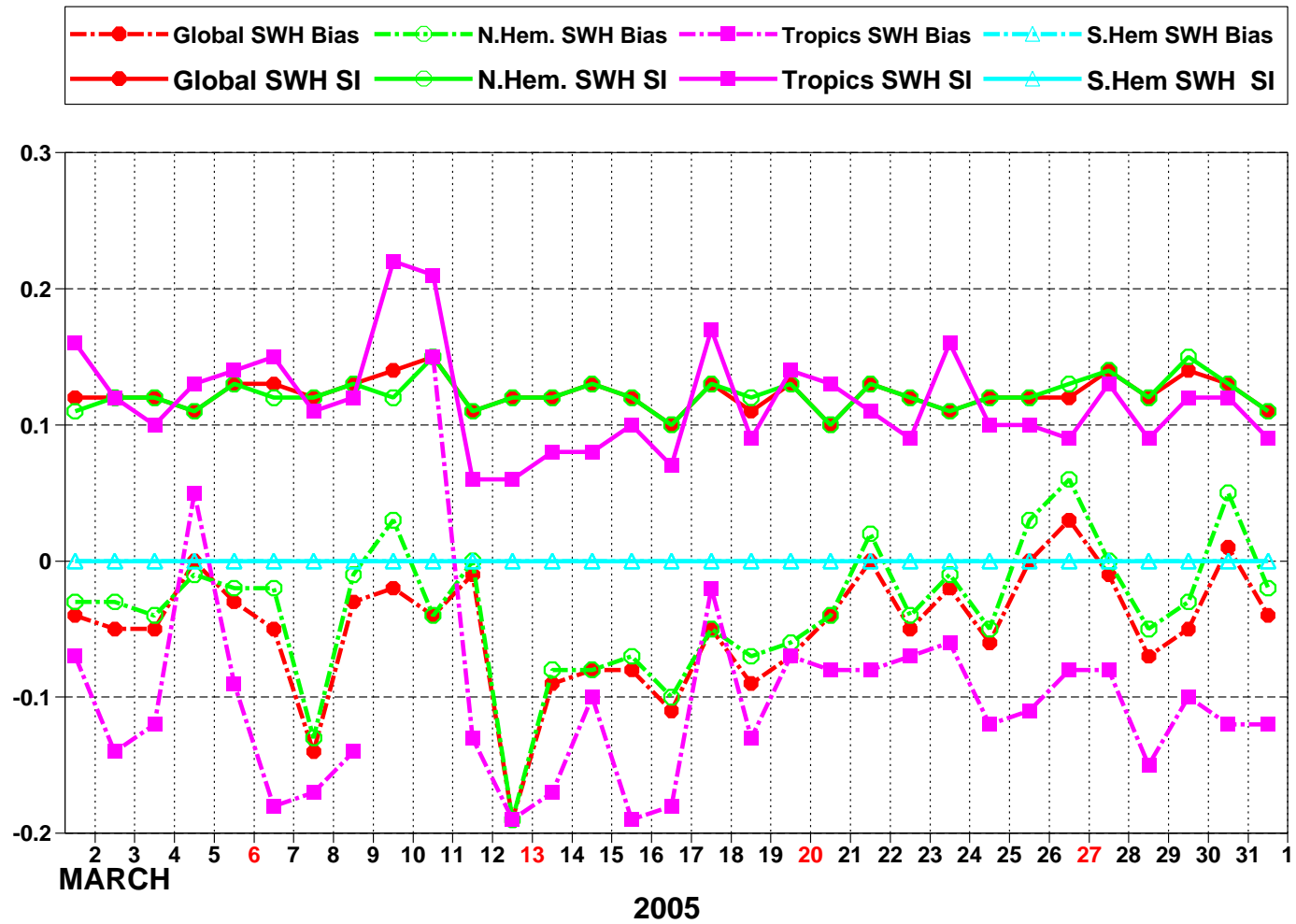


Figure 24: ERS-2 Altimeter wave heights: Timeseries of bias (ERS-2 - model) and scatter index (SI)

# ECMWF Report on ERS-2 RA for March 2005

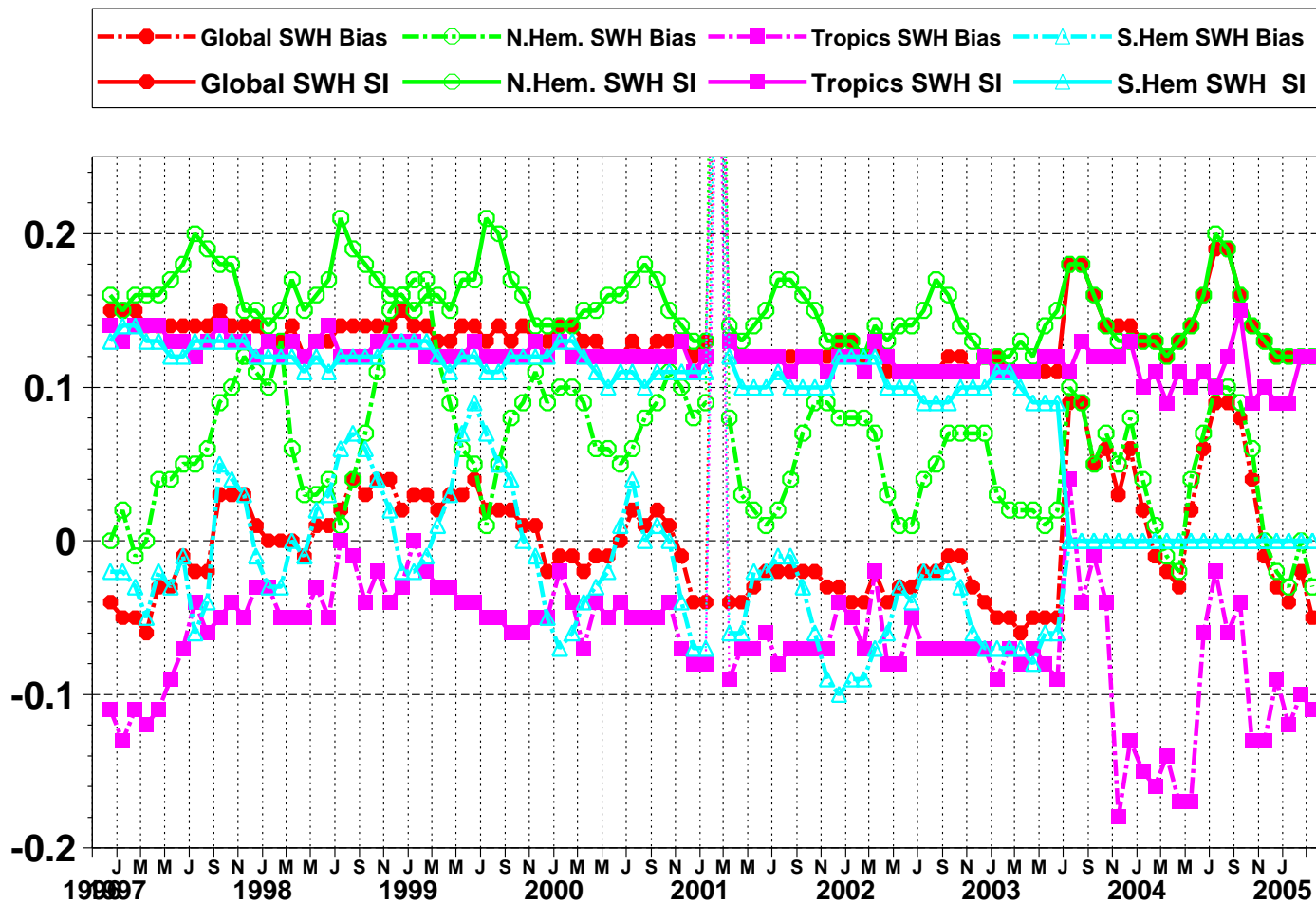


Figure 25: ERS-2 Altimeter wave heights: Timeseries of bias (ERS-2 - model) and scatter index (SI)

# ECMWF Report on ERS-2 RA for March 2005

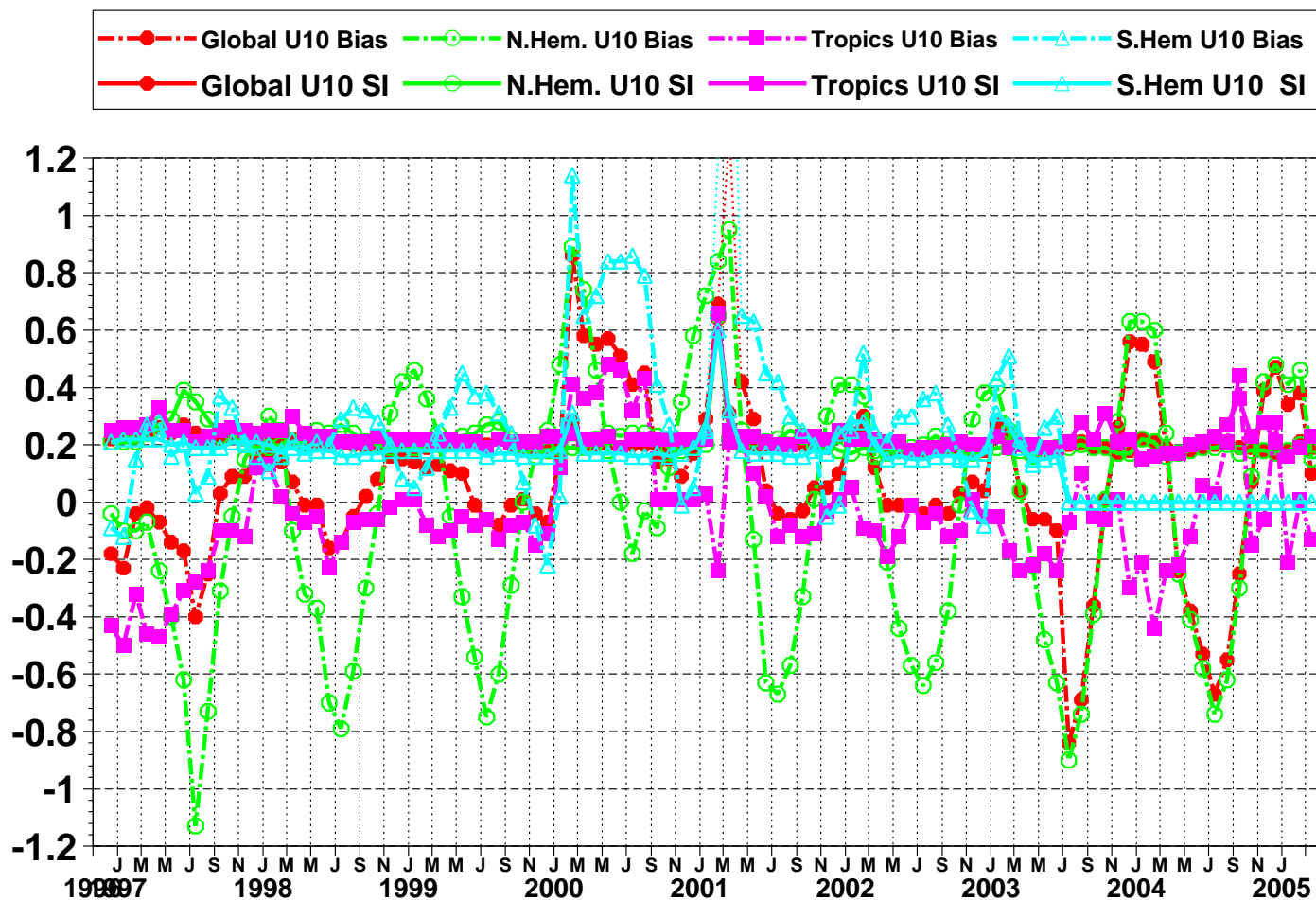


Figure 26: ERS-2 Altimeter wind speeds: Timeseries of bias (ERS-2 - model) and scatter index (SI)

Saleh Abdalla

European Centre for Medium Range Weather Forecasts  
 Shinfield Park, Reading, Berkshire RG2 9AX, England  
 Telephone: U.K. (0118) 949 9703, International (+44 118) 949 9703  
 Telex 984 7908 ECMWF G, Telefax (0118) 986 9450, e-mail: abdalla@ecmwf.int