

■ ECMWF Report on ERS-2 RA for April 2002 ■

Title: Report on ERS-2 Radar Altimeter wave height and wind speed data.

By: *Saleh Abdalla*

Date: *8 May 2002*

Overview:

Based on the data received during the full month, on average 15835 observations arrived at ECMWF every 6 hours of which 81.9% passed the quality control. The data coverage was rather good as can be seen in Figure 1. However, there was no data during the time slots centred at 06:00 on 20th, 18:00 on the 21st, 00:00 and 06:00 on the 26th of the month. Significant reduction of data reception occurred at the time slot of 00:00 UTC on the 20th. Note that we are talking about the raw data which have arrived at ECMWF before they were processed. The quality of the received data is as good as usual (as before 2000).

Backscatter:

ERS-2 $\langle \sigma_0 \rangle = 11.07$ dB (with double peaks at 10.6 dB and at 11.1 dB)

Wind Speed Comparison with ECMWF wind speeds (bias):

ERS-2 global: -0.010 m/s

ERS-2 northern hemisphere: -0.208 m/s

ERS-2 tropics: -0.188 m/s

ERS-2 southern hemisphere: 0.207 m/s



Saleh Abdalla

European Centre for Medium Range Weather Forecasts
Shinfield Park, Reading, Berkshire RG2 9AX, England

Telephone: U.K. (0118) 949 9703, International (+44 118) 949 9703

Telex 984 7908 ECMWF G, Telefax (0118) 986 9450, e-mail: abdalla@ecmwf.int

■ ECMWF Report on ERS-2 RA for April 2002 ■

Wind Speed Comparison with buoy wind speeds (bias):

ERS-2 global: -0.829 m/s

ERS-2 northern hemisphere: -0.863 m/s

ERS-2 tropics: -0.736 m/s

Wave Height Comparison with ECMWF wave heights (bias):

ERS-2 global: -0.044 m (lowest waves measured: 0.6m)

ERS-2 northern hemisphere: 0.027 m

ERS-2 tropics: -0.080 m

ERS-2 southern hemisphere: -0.057 m

Wave Height Comparison with buoy wave heights (bias):

ERS-2 global: -0.07 m

ERS-2 northern hemisphere: -0.06 m

ERS-2 tropics: -0.19 m



Saleh Abdalla

European Centre for Medium Range Weather Forecasts
Shinfield Park, Reading, Berkshire RG2 9AX, England

Telephone: U.K. (0118) 949 9703, International (+44 118) 949 9703

Telex 984 7908 ECMWF G, Telefax (0118) 986 9450, e-mail: abdalla@ecmwf.int

■ ECMWF Report on ERS-2 RA for April 2002 ■

Remarks:

- The quality of Altimeter wave height and wind speed data are as good as they used to be. The wind speed data has experienced an improved quality after March 21, 2002 (after the recovery from the ERS-2 anomaly of March 2002). Apparently, this can be attributed to the yaw control system which makes use of some of the data coming from SAR imagerie processing. This yaw control system was implemented on March 4, 2002. The impact of this system on the wind speed quality was not felt earlier because of the anomaly which lasted about 2 weeks.

Comparison Method:

The Altimeter wave height and wind speed data, as received by ECMWF from ESA through GTS, are the so-called fast delivery products. At ECMWF these data are subject to a quality control method, the details of which are described by Janssen et al. (1989) and Bauer et al. (1992). Consequently, superobservations are formed by averaging 30 consecutive data in order to match the spatial scales of the operational WAM model. Therefore, the collocation statistics are based on the comparison between these superobservations and operational wavemodel products.

In addition, since also wave observations from buoys are received through the GTS, the Altimeter products are also compared against buoy observations. Again, in order to have matching scales, the buoy observations are averaged over a six hour time window. Apart from this, also a height correction is applied to the wind speed observations, since not all buoys observe the winds at the standard height of 10 m. A default observation height of 5 m is assumed, and when available the actual observation height is used. In order to interpolate from the observation height to the standard height a logarithmic wind profile with a roughness length as given by the Charnock relation is assumed, where the Charnock parameter is given the constant value of 0.018.



Saleh Abdalla

European Centre for Medium Range Weather Forecasts
Shinfield Park, Reading, Berkshire RG2 9AX, England

Telephone: U.K. (0118) 949 9703, International (+44 118) 949 9703

Telex 984 7908 ECMWF G, Telefax (0118) 986 9450, e-mail: abdalla@ecmwf.int

■ ECMWF Report on ERS-2 RA for April 2002 ■

Figure captions:

Figure 1: Time series of data reception for ERS-2 Altimeter data for April 2002.

Figure 2: Distribution of the ERS-2 Altimeter Backscatter after QC for April 2002.

Figure 3: Distribution of the ERS-2 Altimeter wind speeds after QC for April 2002.

Figure 4: Distribution of the ERS-2 Altimeter wind speeds after along track averaging for April 2002.

Figure 5: Global distribution of ECMWF ocean surface wind speeds for April 2002.

Figure 6: Comparison of ECMWF wind speed results with ERS-2 Altimeter wind speed data for April 2002 (global).

Figure 7: Comparison of ECMWF wind speed results with ERS-2 Altimeter wind speed data for April 2002 (northern hemisphere)

Figure 8: Comparison of ECMWF wind speed results with ERS-2 Altimeter wind speed data for April 2002 (tropics)

Figure 9: Comparison of ECMWF wind speed results with ERS-2 Altimeter wind speed data for April 2002 (southern hemisphere)

Figure 10: Comparison of buoy wind speed observations with ERS-2 Altimeter wind speed data for April 2002 (global).

Figure 11: Comparison of buoy wind speed observations with ERS-2 Altimeter wind speed data for April 2002 (northern hemisphere).

Figure 12: Comparison of buoy wind speed observations with ERS-2 Altimeter wind speed data for April 2002 (tropics).

Figure 13: ERS-2 Altimeter wind speeds: Timeseries of bias (ERS-2 - model) and scatter index (SI).

Figure 14: Distribution of the ERS-2 Altimeter wave heights after QC for April 2002.

Figure 15: Distribution of the ERS-2 Altimeter wave heights after along track averaging for April 2002.

Figure 16: Global distribution of ECMWF wave heights for April 2002.

Figure 17: Comparison of ECMWF wave height results with ERS-2 Altimeter wave height data for April 2002 (global).

Figure 18: Comparison of ECMWF wave height results with ERS-2 Altimeter wave height data for April 2002 (northern hemisphere)

Figure 19: Comparison of ECMWF wave height results with ERS-2 Altimeter wave height data for April 2002 (tropics)

Figure 20: Comparison of ECMWF wave height results with ERS-2 Altimeter wave height data for April 2002 (southern hemisphere)

Figure 21: Comparison of buoy wave height observations with ERS-2 Altimeter wave height data for April 2002 (global).

Figure 22: Comparison of buoy wave height observations with ERS-2 Altimeter wave height data for April 2002 (northern hemisphere).

■
Saleh Abdalla

European Centre for Medium Range Weather Forecasts
Shinfield Park, Reading, Berkshire RG2 9AX, England
Telephone: U.K. (0118) 949 9703, International (+44 118) 949 9703
Telex 984 7908 ECMWF G, Telefax (0118) 986 9450, e-mail: abdalla@ecmwf.int

■ ECMWF Report on ERS-2 RA for April 2002 ■

Figure 23: Comparison of buoy wave height observations with ERS-2 Altimeter wave height data for April 2002 (tropics).

Figure 24: ERS-2 Altimeter wave heights: Timeseries of bias (ERS-2 - model) and scatter index (SI) for April 2002.

Figure 25: ERS-2 Altimeter wave heights: Timeseries of bias (ERS-2 - model) and scatter index (SI) from December 1996 to April 2002

Figure 26: ERS-2 Altimeter wind speeds: Timeseries of bias (ERS-2 - model) and scatter index (SI) from December 1996 to April 2002



Saleh Abdalla

European Centre for Medium Range Weather Forecasts
Shinfield Park, Reading, Berkshire RG2 9AX, England

Telephone: U.K. (0118) 949 9703, International (+44 118) 949 9703

Telex 984 7908 ECMWF G, Telefax (0118) 986 9450, e-mail: abdalla@ecmwf.int

■ ECMWF Report on ERS-2 RA for April 2002 ■

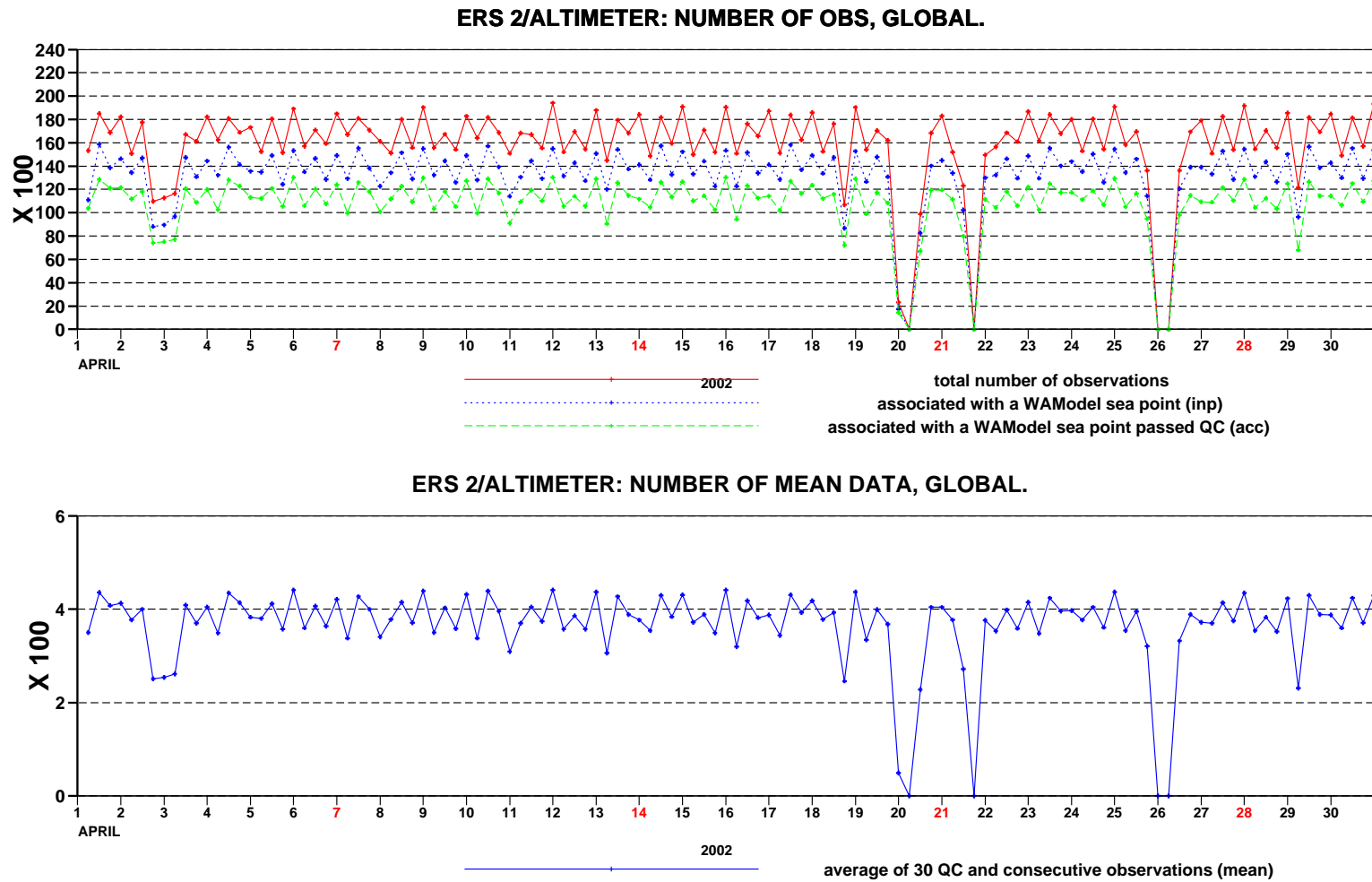


Figure 1: Time series of data reception for ERS-2 Altimeter data for April 2002

■ ECMWF Report on ERS-2 RA for April 2002 ■

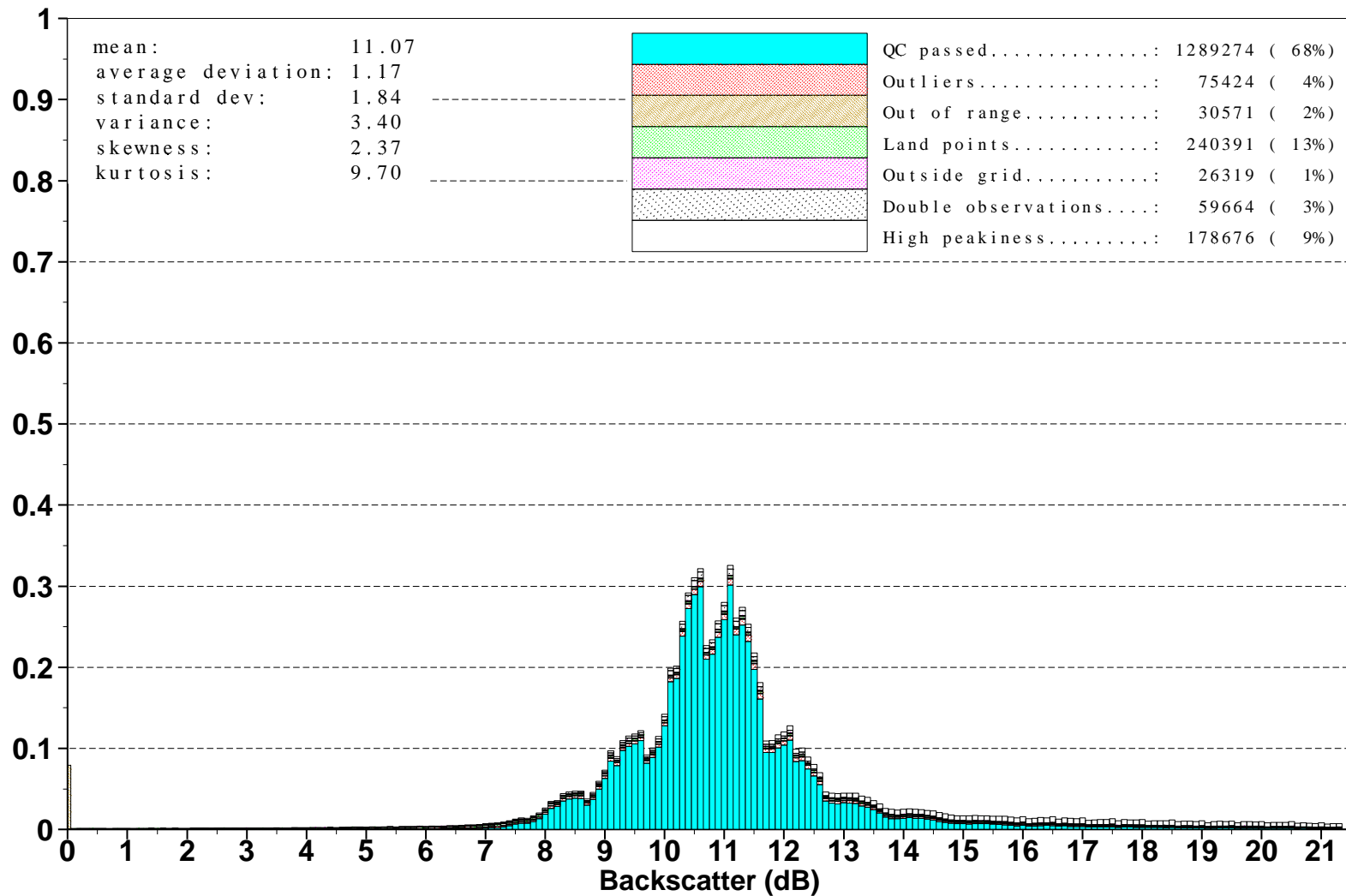


Figure 2: Distribution of the ERS-2 Altimeter backscatter after QC for April 2002



Saleh Abdalla

European Centre for Medium Range Weather Forecasts
Shinfield Park, Reading, Berkshire RG2 9AX, England

Telephone: U.K. (0118) 949 9703, International (+44 118) 949 9703

Telex 984 7908 ECMWF G, Telefax (0118) 986 9450, e-mail: abdalla@ecmwf.int

■ ECMWF Report on ERS-2 RA for April 2002 ■

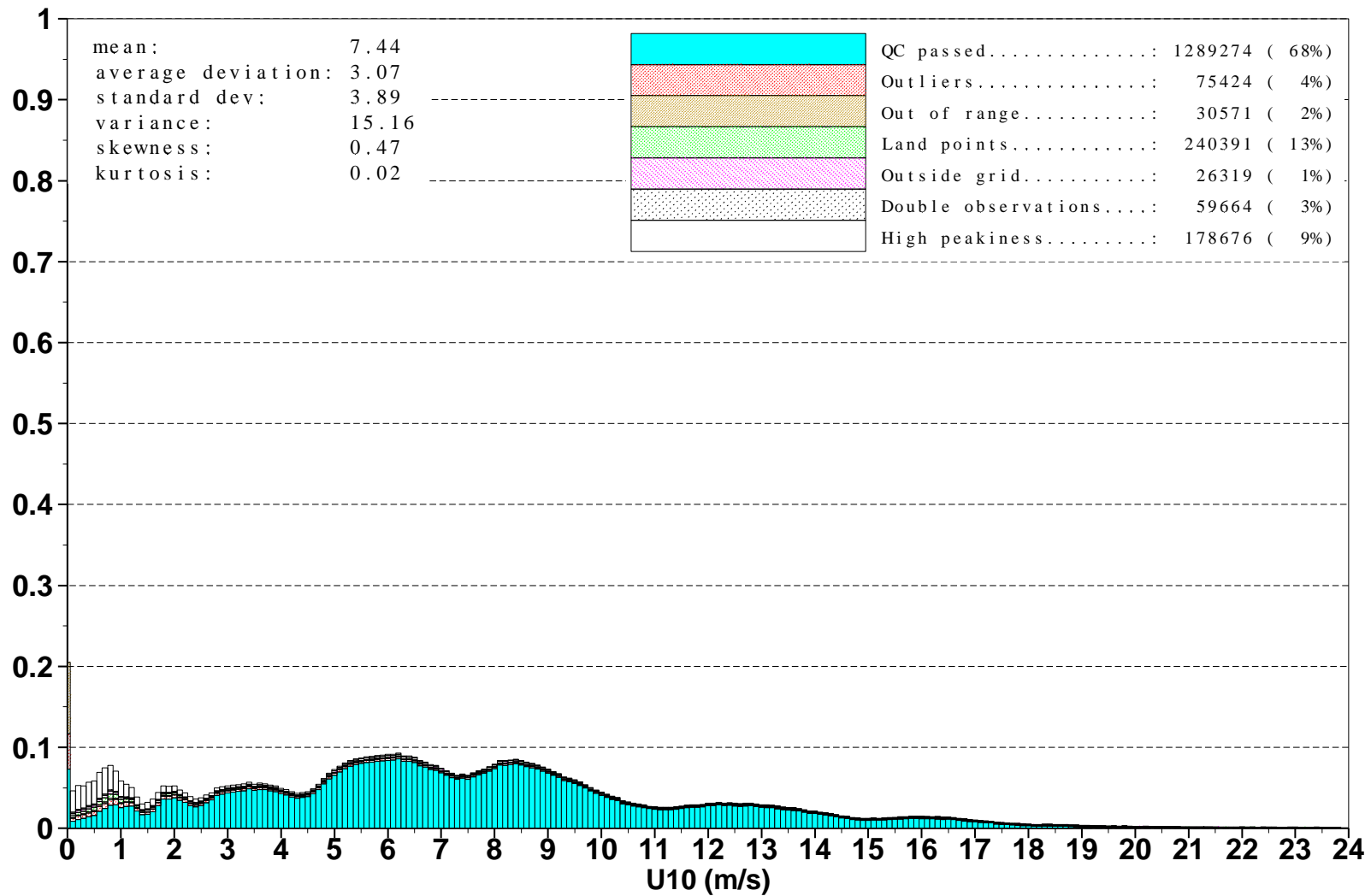


Figure 3: Distribution of the ERS-2 Altimeter wind speeds after QC for April 2002



■ ECMWF Report on ERS-2 RA for April 2002 ■

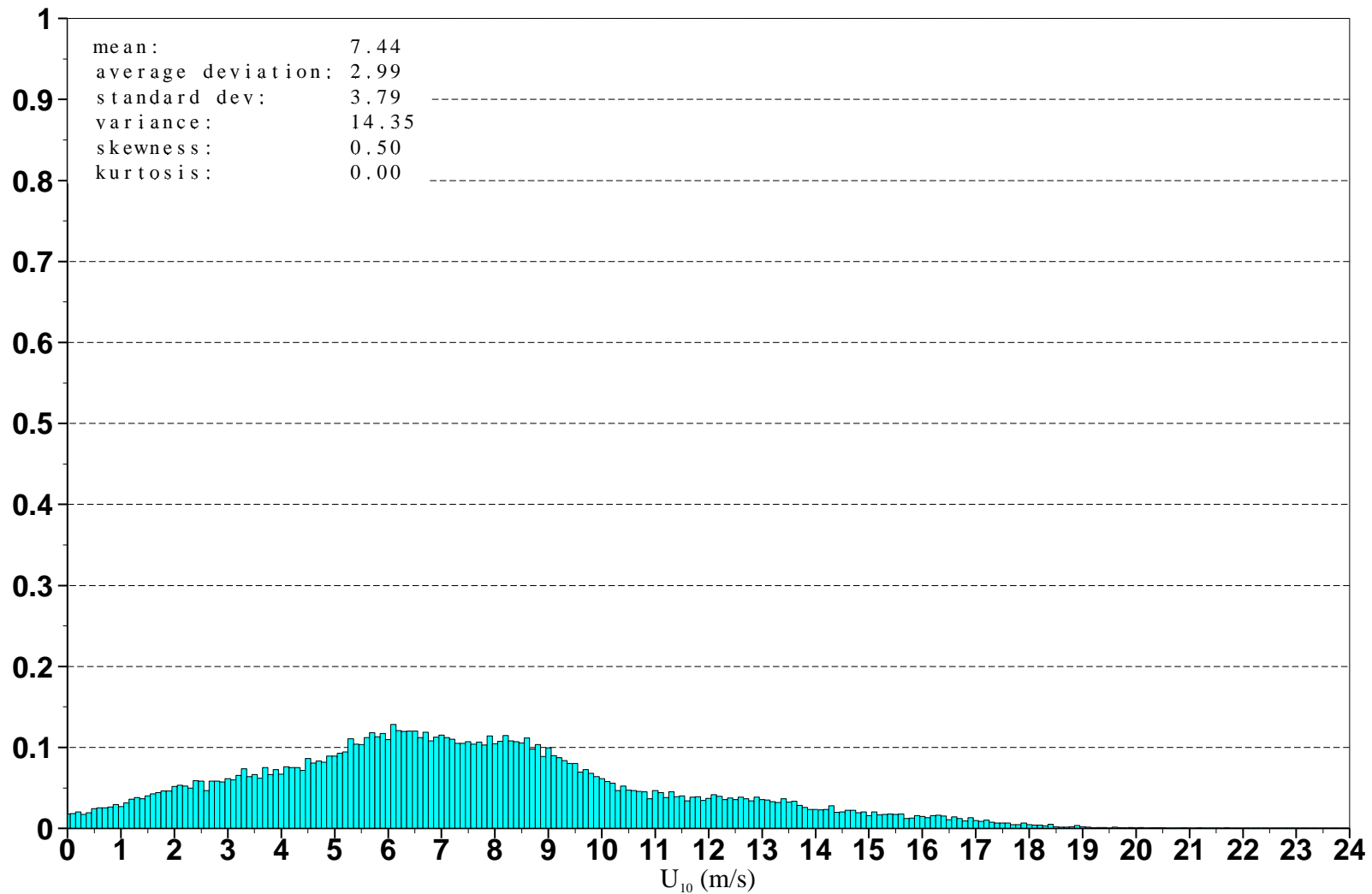
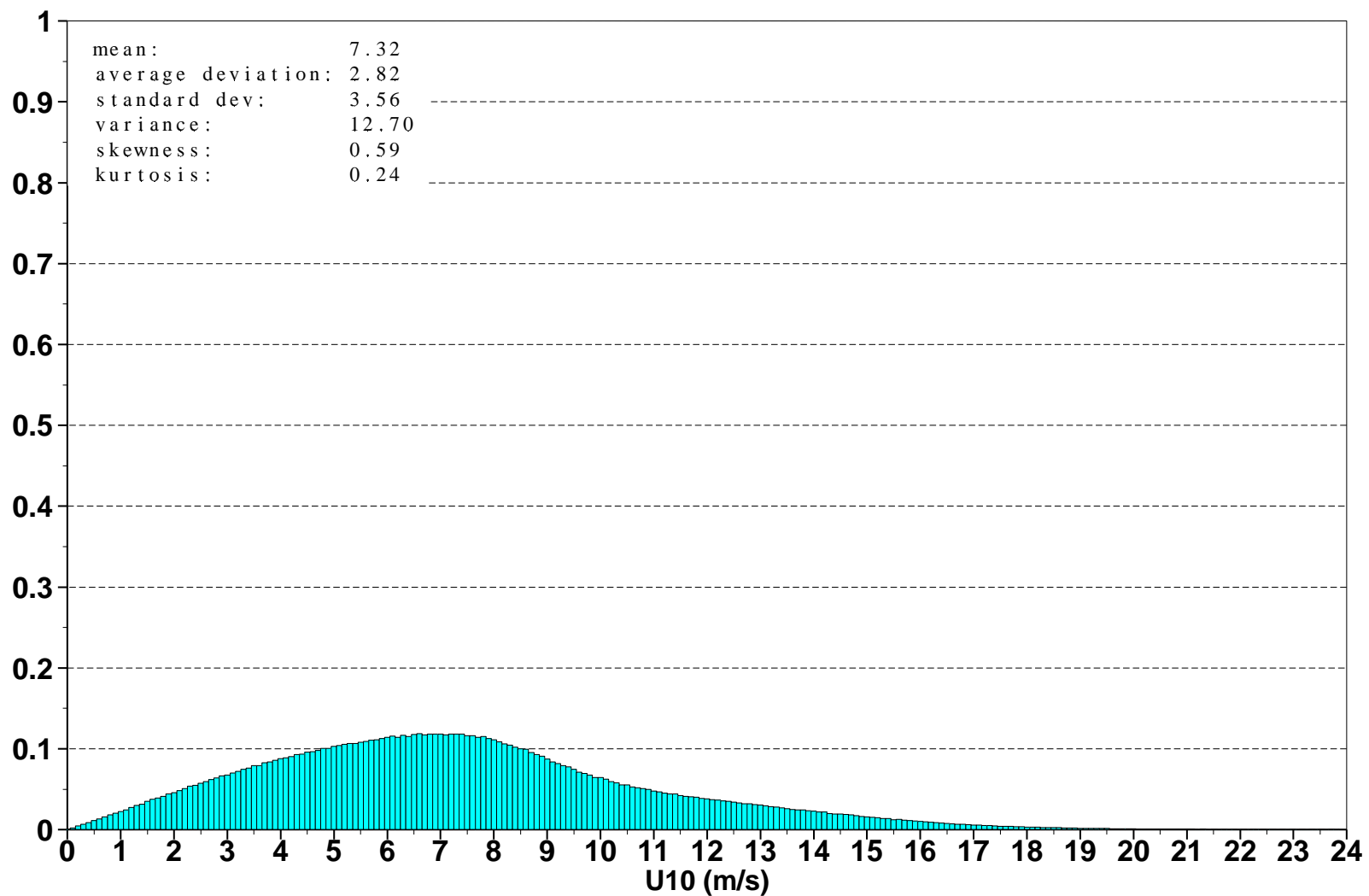


Figure 4: Distribution of ERS-2 Altimeter wind speeds after along track averaging for April 2002

■
Saleh Abdalla

European Centre for Medium Range Weather Forecasts
Shinfield Park, Reading, Berkshire RG2 9AX, England
Telephone: U.K. (0118) 949 9703, International (+44 118) 949 9703
Telex 984 7908 ECMWF G, Telefax (0118) 986 9450, e-mail: abdalla@ecmwf.int

■ ECMWF Report on ERS-2 RA for April 2002 ■



Saleh Abdalla

European Centre for Medium Range Weather Forecasts
Shinfield Park, Reading, Berkshire RG2 9AX, England

Telephone: U.K. (0118) 949 9703, International (+44 118) 949 9703

Telex 984 7908 ECMWF G, Telefax (0118) 986 9450, e-mail: abdalla@ecmwf.int

■ ECMWF Report on ERS-2 RA for April 2002 ■

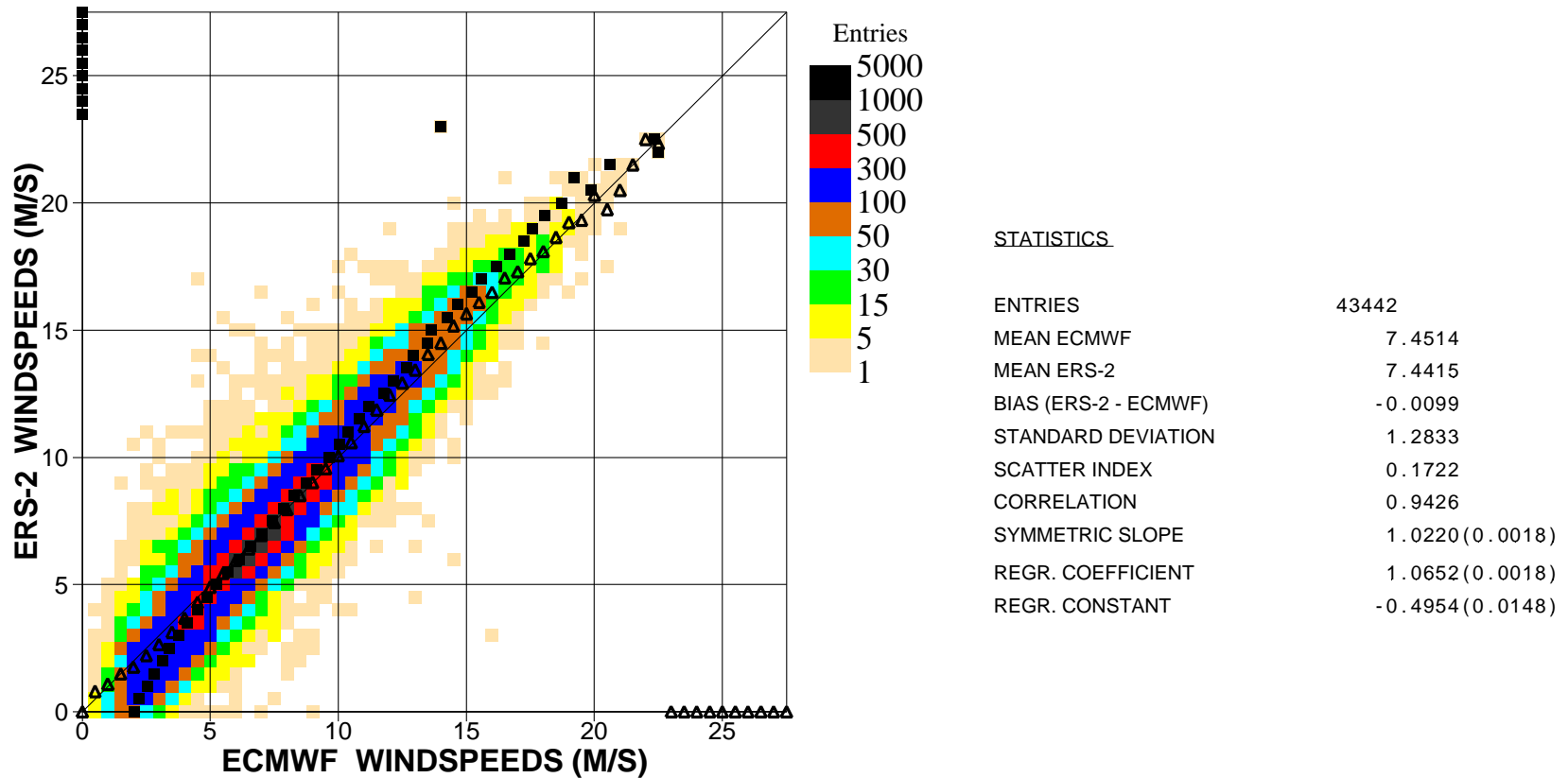


Figure 6. Comparison of ECMWF wind speed results with ERS2 Altimeter wind speed data for April 2002 (global)

■
Saleh Abdalla

European Centre for Medium Range Weather Forecasts
Shinfield Park, Reading, Berkshire RG2 9AX, England
Telephone: U.K. (0118) 949 9703, International (+44 118) 949 9703
Telex 984 7908 ECMWF G, Telefax (0118) 986 9450, e-mail: abdalla@ecmwf.int

■ ECMWF Report on ERS-2 RA for April 2002 ■

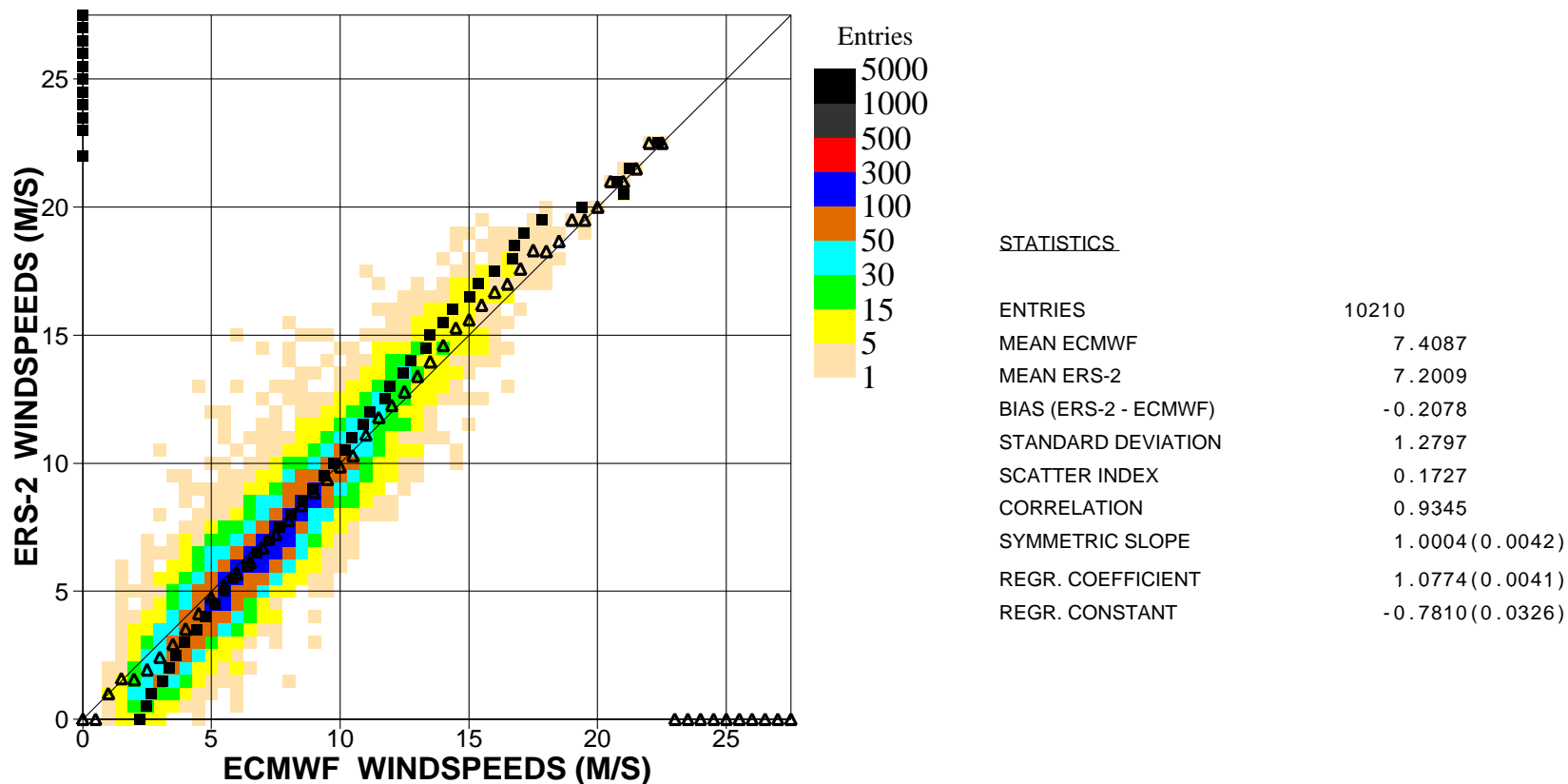


Figure 7. Comparison of ECMWF wind speed results with ERS2 Altimeter wind speed data for April 2002 (n.hem.)

■
Saleh Abdalla

European Centre for Medium Range Weather Forecasts
Shinfield Park, Reading, Berkshire RG2 9AX, England
Telephone: U.K. (0118) 949 9703, International (+44 118) 949 9703
Telex 984 7908 ECMWF G, Telefax (0118) 986 9450, e-mail: abdalla@ecmwf.int

ECMWF Report on ERS-2 RA for April 2002

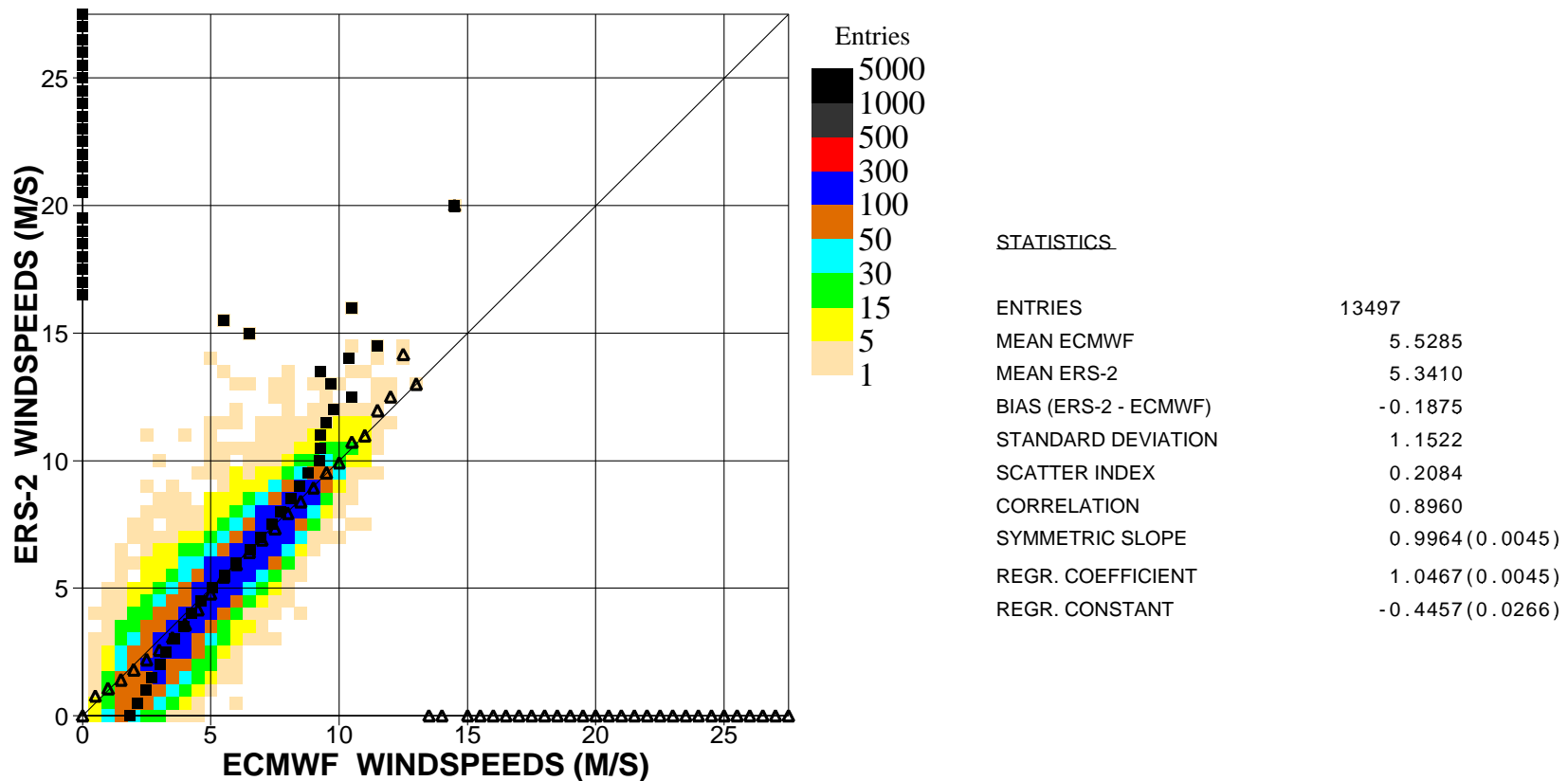


Figure 8. Comparison of ECMWF wind speed results with ERS2 Altimeter wind speed data for April 2002 (tropics)

Saleh Abdalla

European Centre for Medium Range Weather Forecasts
 Shinfield Park, Reading, Berkshire RG2 9AX, England
 Telephone: U.K. (0118) 949 9703, International (+44 118) 949 9703
 Telex 984 7908 ECMWF G, Telefax (0118) 986 9450, e-mail: abdalla@ecmwf.int

ECMWF Report on ERS-2 RA for April 2002

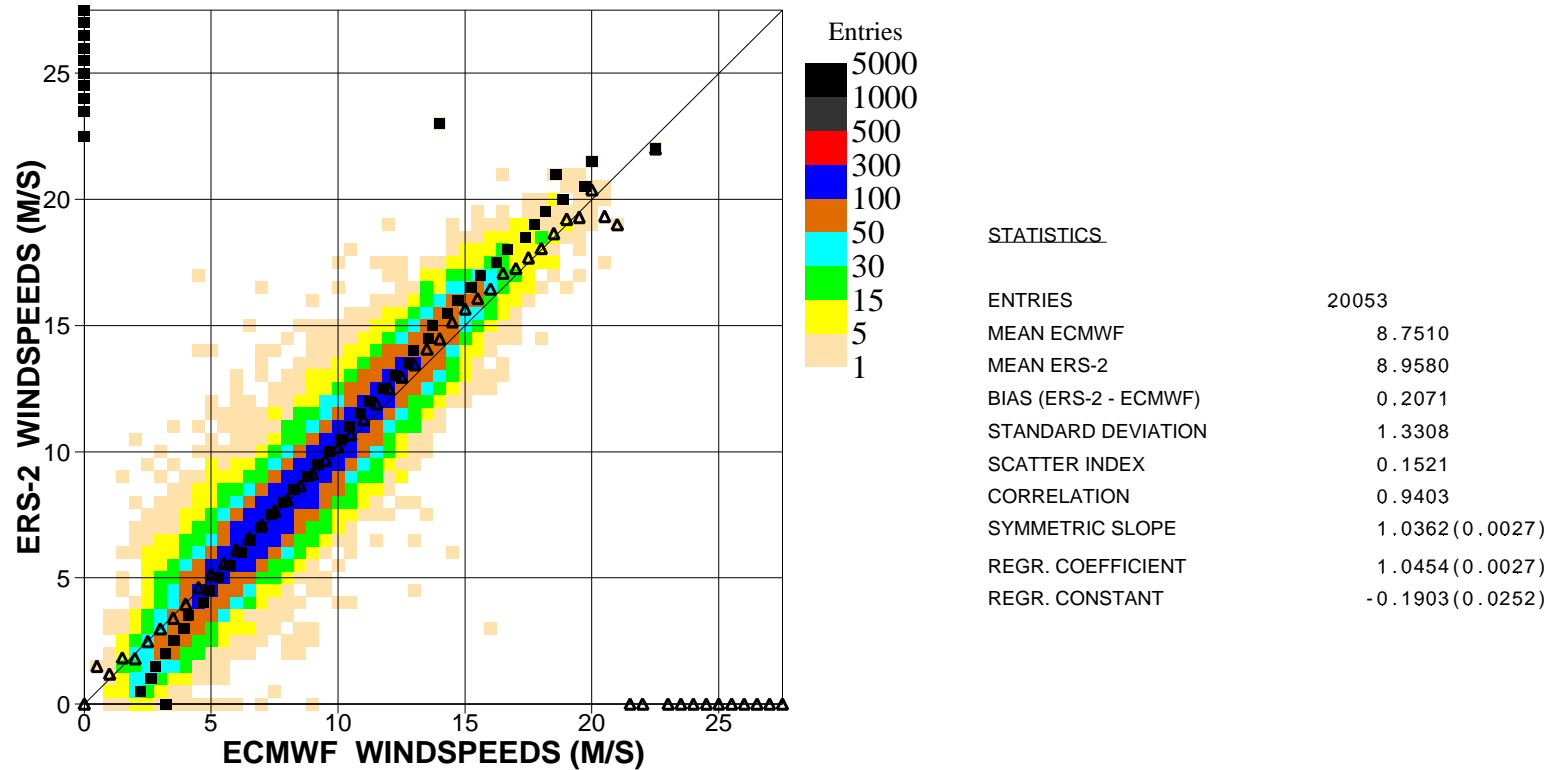


Figure 9. Comparison of ECMWF wind speed results with ERS2 Altimeter wind speed data for April 2002 (s.hem.)

Saleh Abdalla

European Centre for Medium Range Weather Forecasts
 Shinfield Park, Reading, Berkshire RG2 9AX, England
 Telephone: U.K. (0118) 949 9703, International (+44 118) 949 9703
 Telex 984 7908 ECMWF G, Telefax (0118) 986 9450, e-mail: abdalla@ecmwf.int

ECMWF Report on ERS-2 RA for April 2002

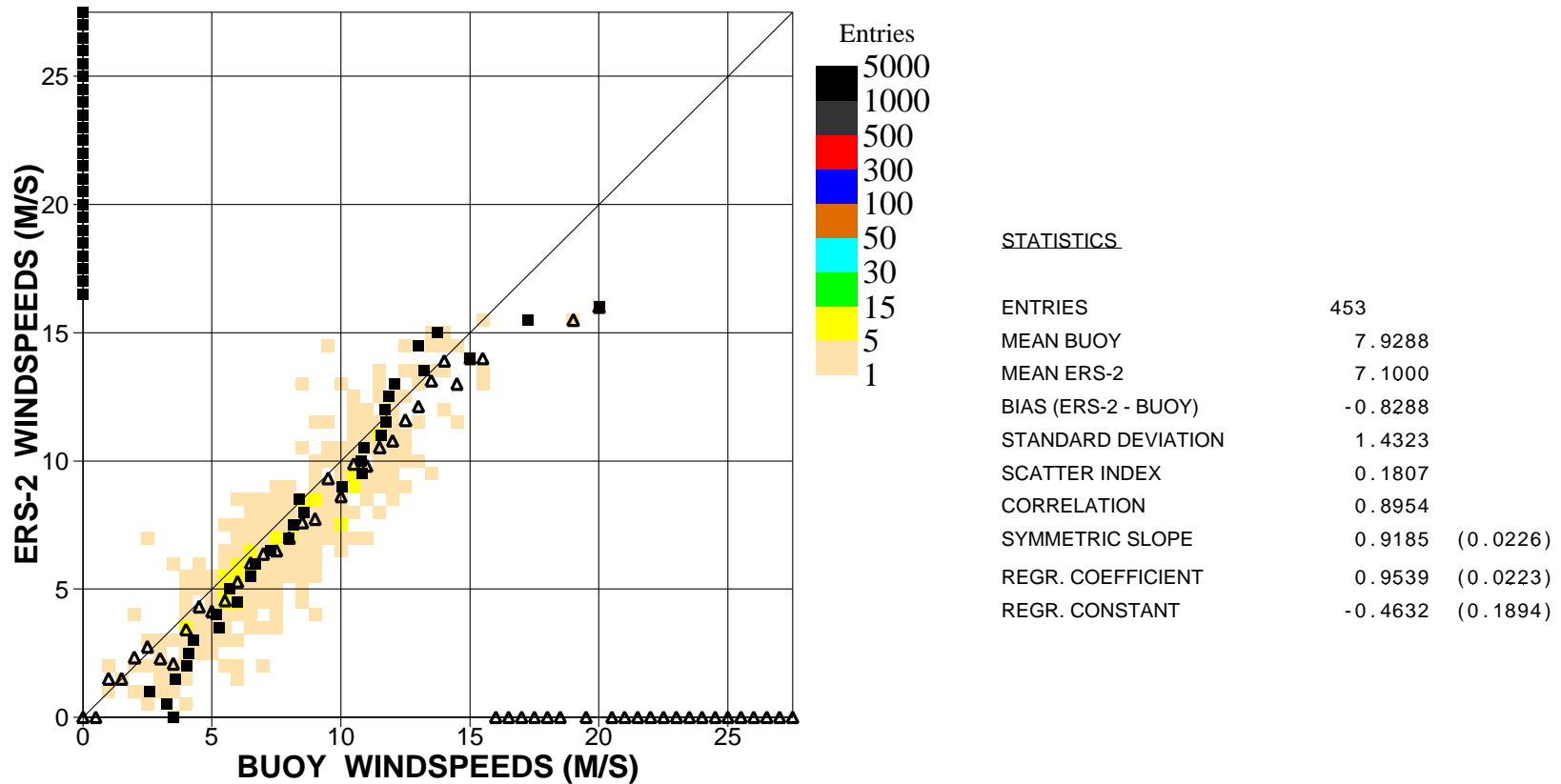


Figure 10. Comparison of buoy wind speed observations with ERS2 Altimeter wind speed data for April 2002 (global)

Saleh Abdalla

European Centre for Medium Range Weather Forecasts
 Shinfield Park, Reading, Berkshire RG2 9AX, England
 Telephone: U.K. (0118) 949 9703, International (+44 118) 949 9703
 Telex 984 7908 ECMWF G, Telefax (0118) 986 9450, e-mail: abdalla@ecmwf.int

ECMWF Report on ERS-2 RA for April 2002

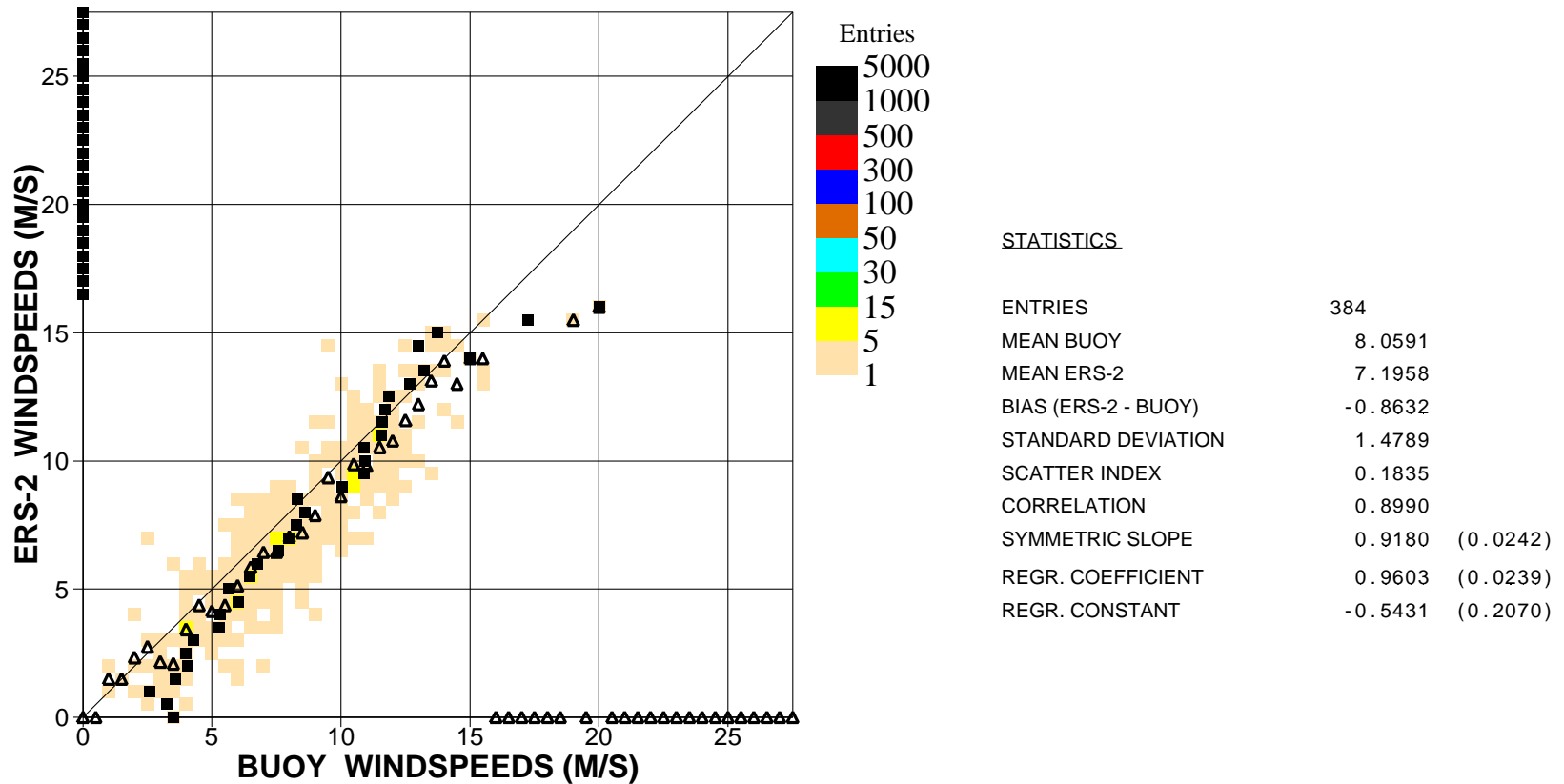


Figure 11. Comparison of buoy wind speed observations with ERS2 Altimeter wind speed data for April 2002 (n.hem.)

Saleh Abdalla

European Centre for Medium Range Weather Forecasts
 Shinfield Park, Reading, Berkshire RG2 9AX, England
 Telephone: U.K. (0118) 949 9703, International (+44 118) 949 9703
 Telex 984 7908 ECMWF G, Telefax (0118) 986 9450, e-mail: abdalla@ecmwf.int

ECMWF Report on ERS-2 RA for April 2002

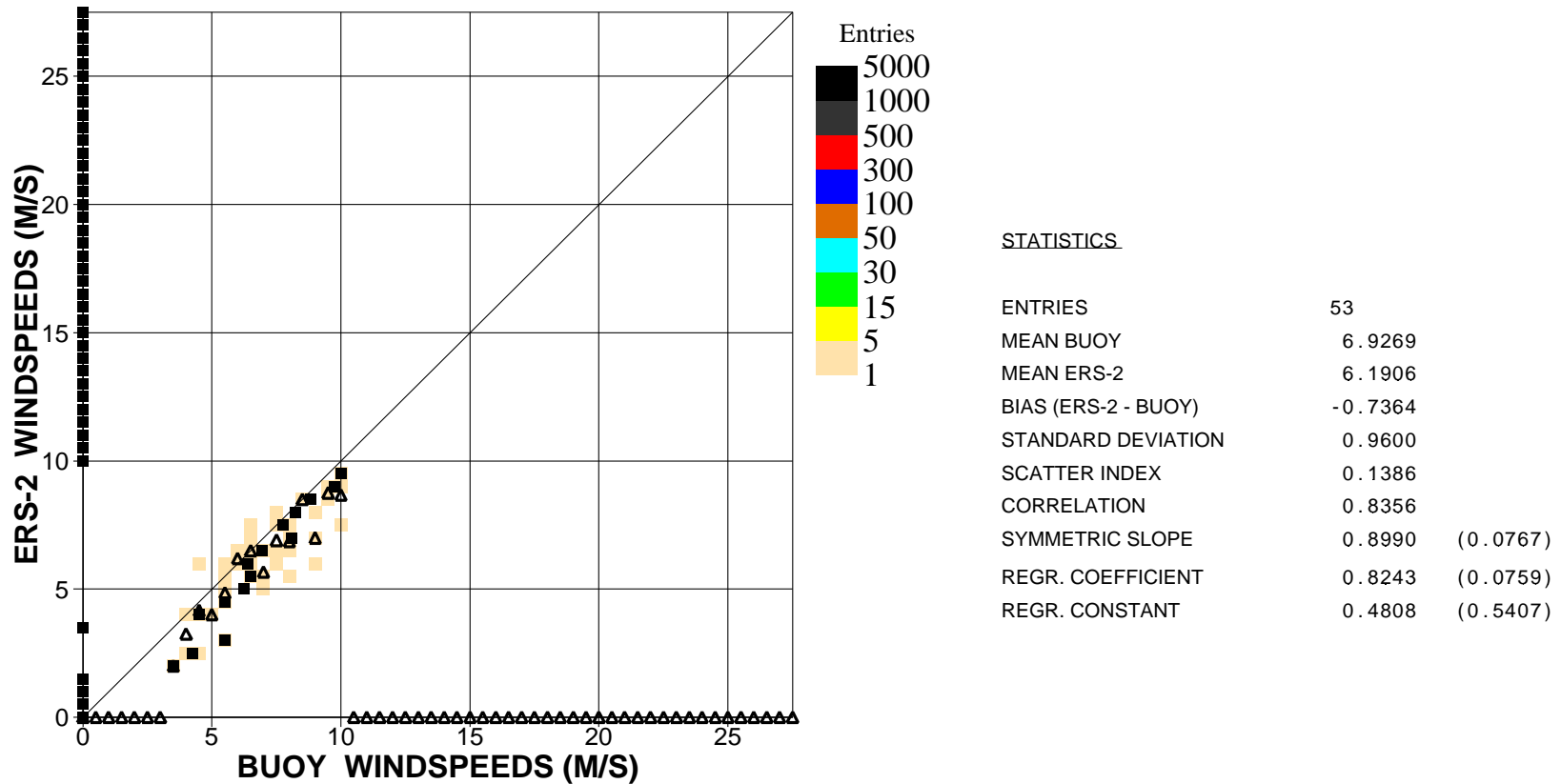


Figure 12. Comparison of buoy wind speed observations with ERS2 Altimeter wind speed data for April 2002 (hawaii)

Saleh Abdalla

European Centre for Medium Range Weather Forecasts
 Shinfield Park, Reading, Berkshire RG2 9AX, England
 Telephone: U.K. (0118) 949 9703, International (+44 118) 949 9703
 Telex 984 7908 ECMWF G, Telefax (0118) 986 9450, e-mail: abdalla@ecmwf.int

ECMWF Report on ERS-2 RA for April 2002

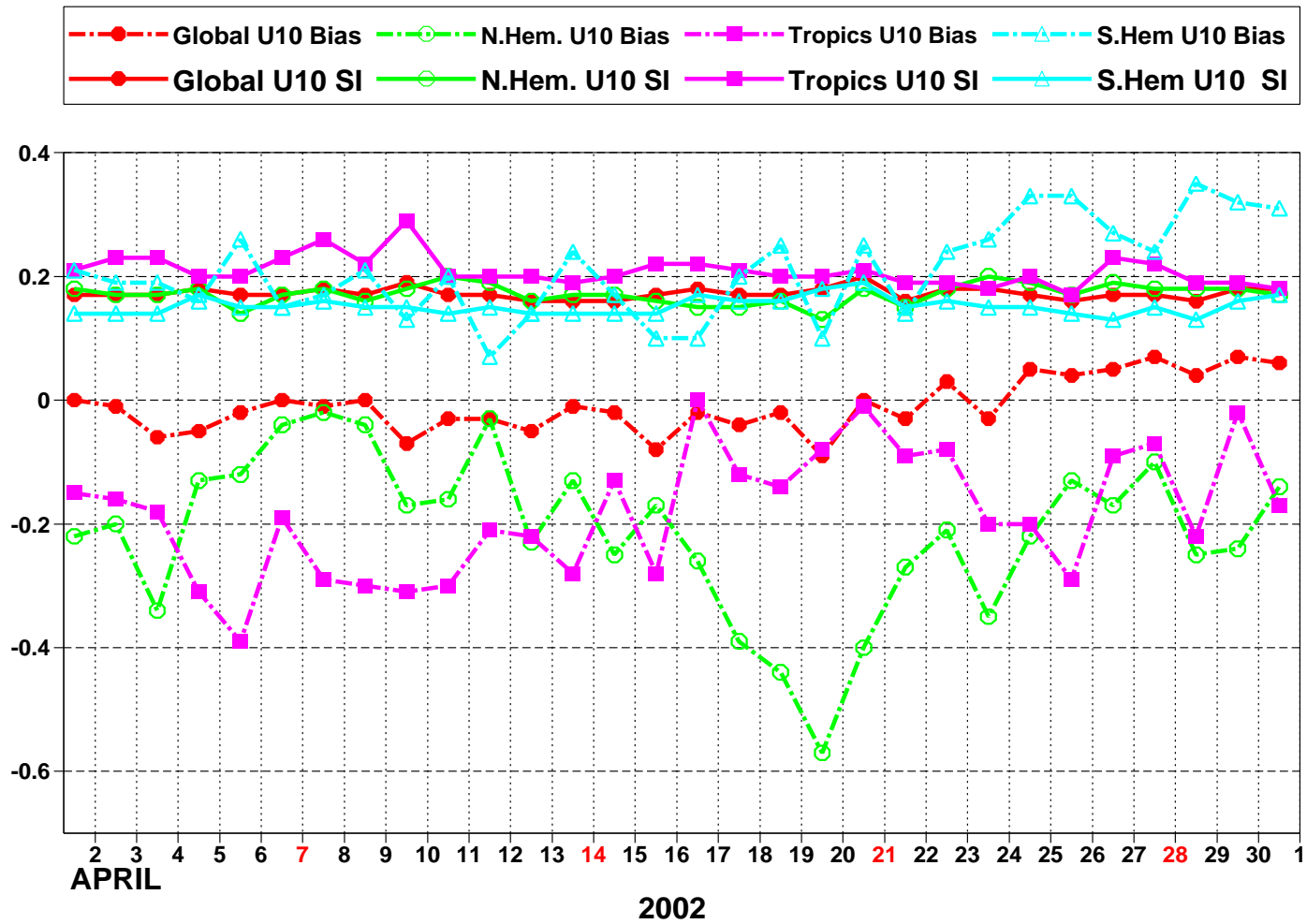


Figure 13: ERS-2 Altimeter wind speeds: Timeseries of bias (ERS-2 - model) and scatter index (SI)

■ ECMWF Report on ERS-2 RA for April 2002 ■

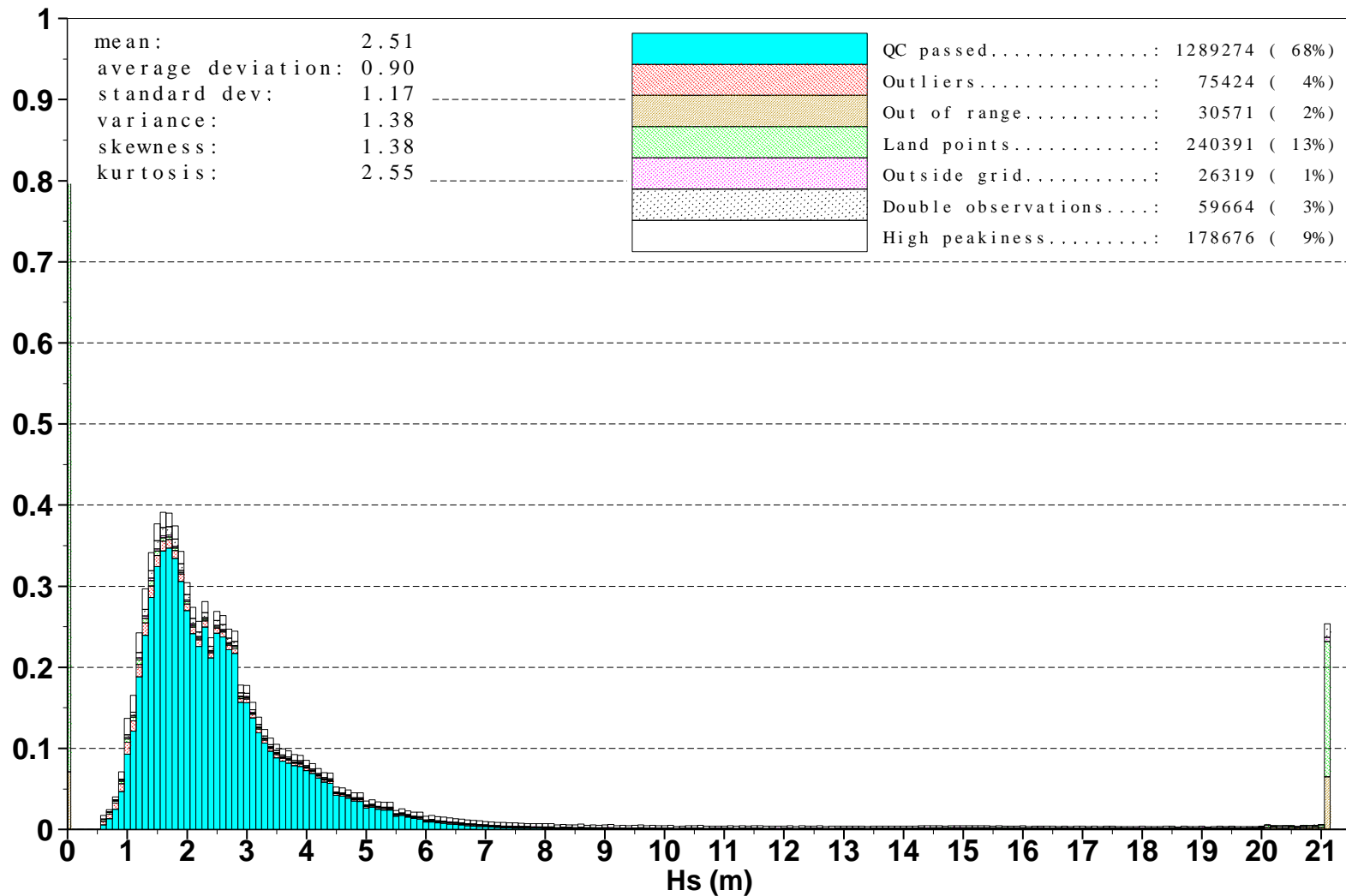


Figure 14: Distribution of the ERS-2 Altimeter wave heights after QC for April 2002

■
Saleh Abdalla

European Centre for Medium Range Weather Forecasts
Shinfield Park, Reading, Berkshire RG2 9AX, England
Telephone: U.K. (0118) 949 9703, International (+44 118) 949 9703
Telex 984 7908 ECMWF G, Telefax (0118) 986 9450, e-mail: abdalla@ecmwf.int

■ ECMWF Report on ERS-2 RA for April 2002 ■

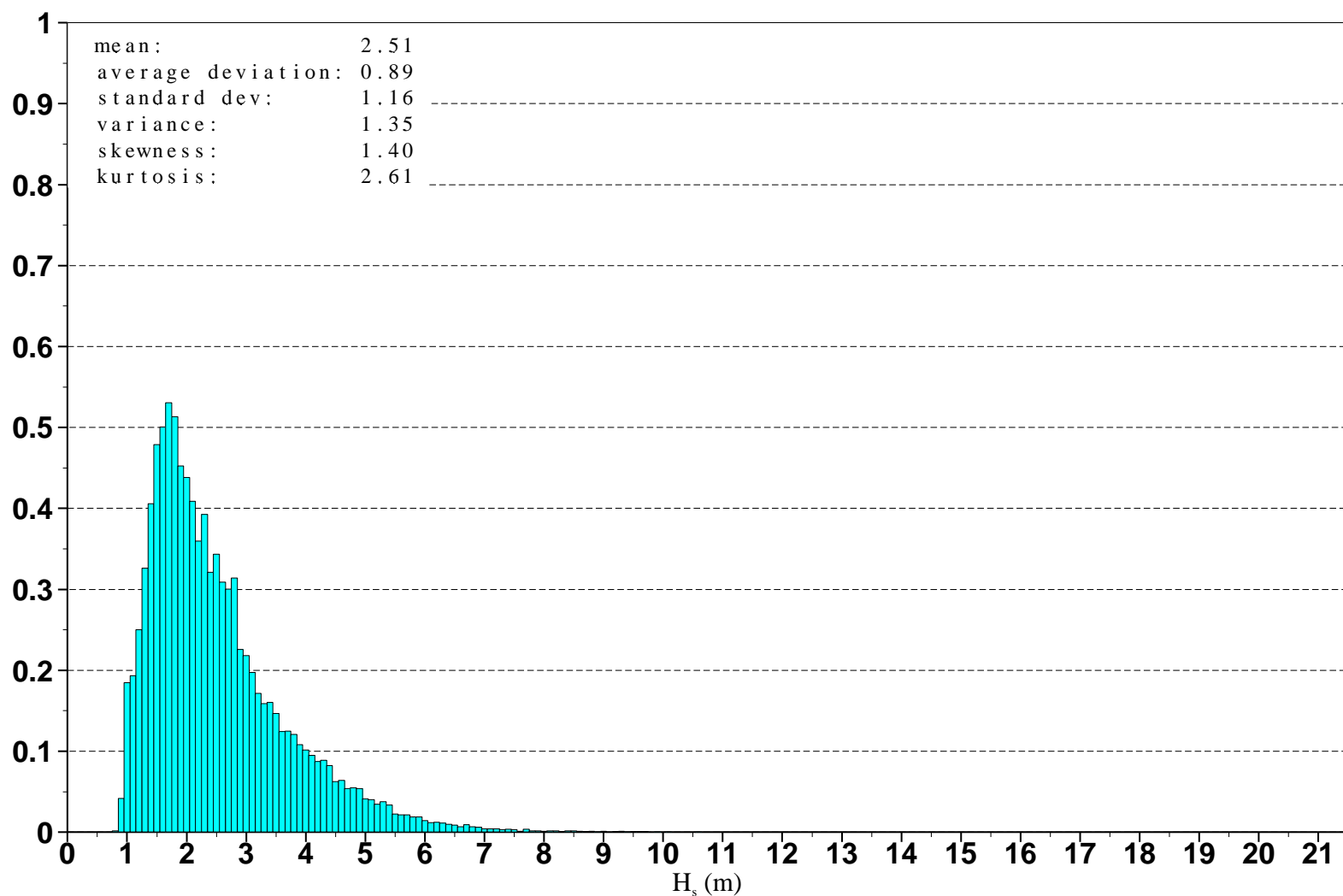


Figure 15: Distribution of ERS-2 Altimeter wave heights after along track averaging for April 2002



Saleh Abdalla

European Centre for Medium Range Weather Forecasts
Shinfield Park, Reading, Berkshire RG2 9AX, England
Telephone: U.K. (0118) 949 9703, International (+44 118) 949 9703
Telex 984 7908 ECMWF G, Telefax (0118) 986 9450, e-mail: abdalla@ecmwf.int

■ ECMWF Report on ERS-2 RA for April 2002 ■

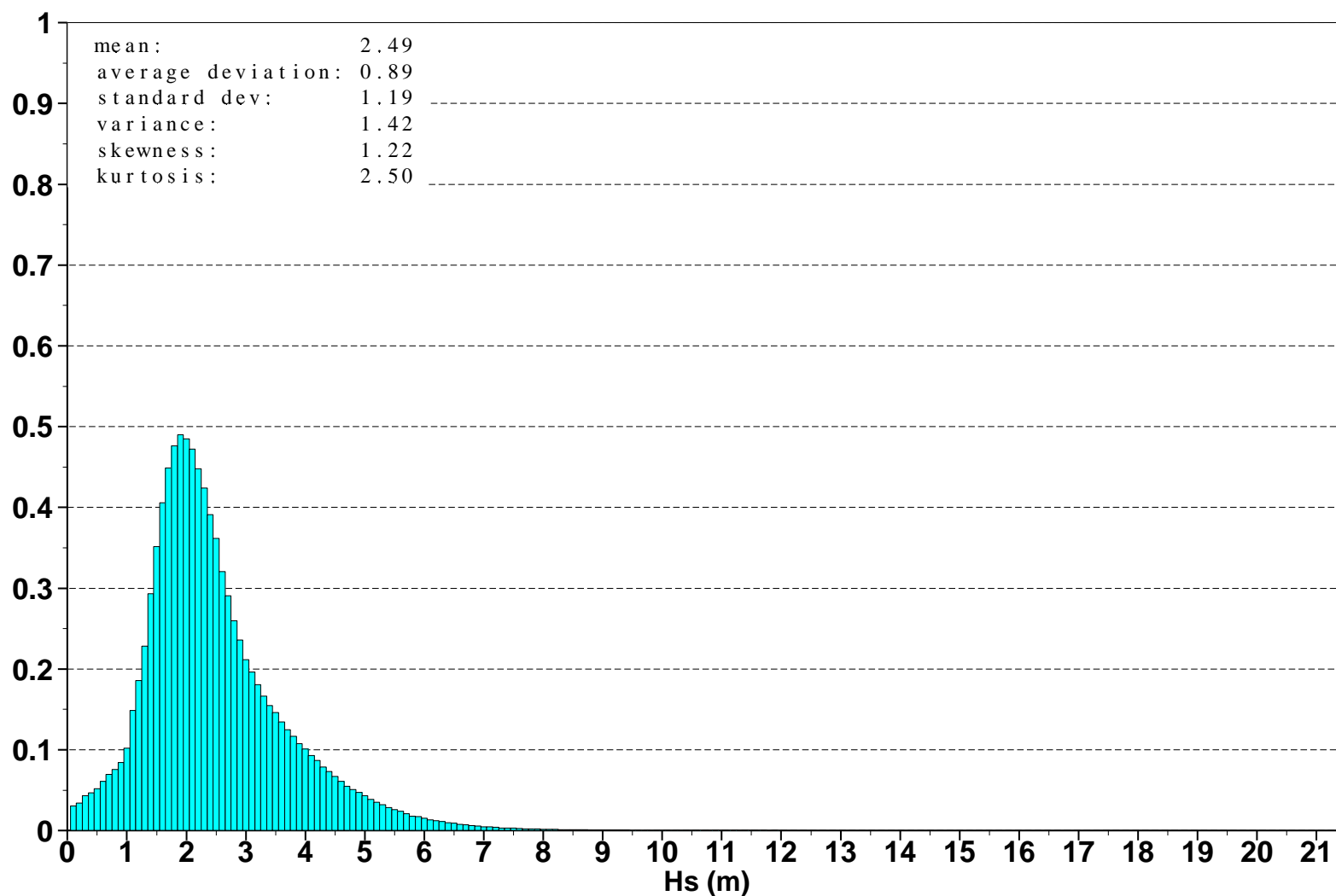


Figure 16: Global distribution of ECMWF wave heights for April 2002



Saleh Abdalla

European Centre for Medium Range Weather Forecasts
Shinfield Park, Reading, Berkshire RG2 9AX, England
Telephone: U.K. (0118) 949 9703, International (+44 118) 949 9703
Telex 984 7908 ECMWF G, Telefax (0118) 986 9450, e-mail: abdalla@ecmwf.int

ECMWF Report on ERS-2 RA for April 2002

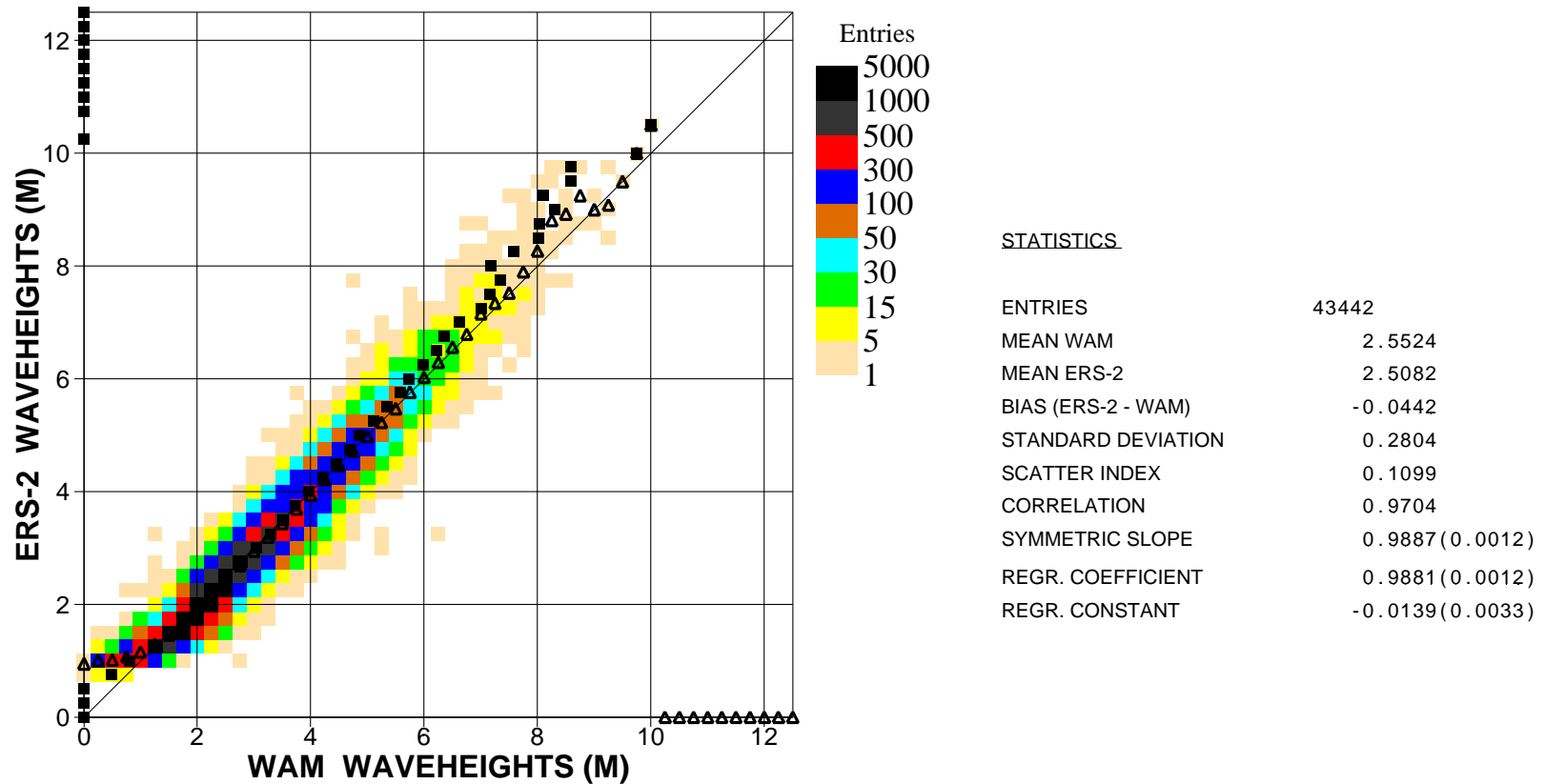


Figure 17. Comparison of ECMWF wave height results with ERS2 Altimeter wave height data for April 2002 (global)

■ ECMWF Report on ERS-2 RA for April 2002 ■

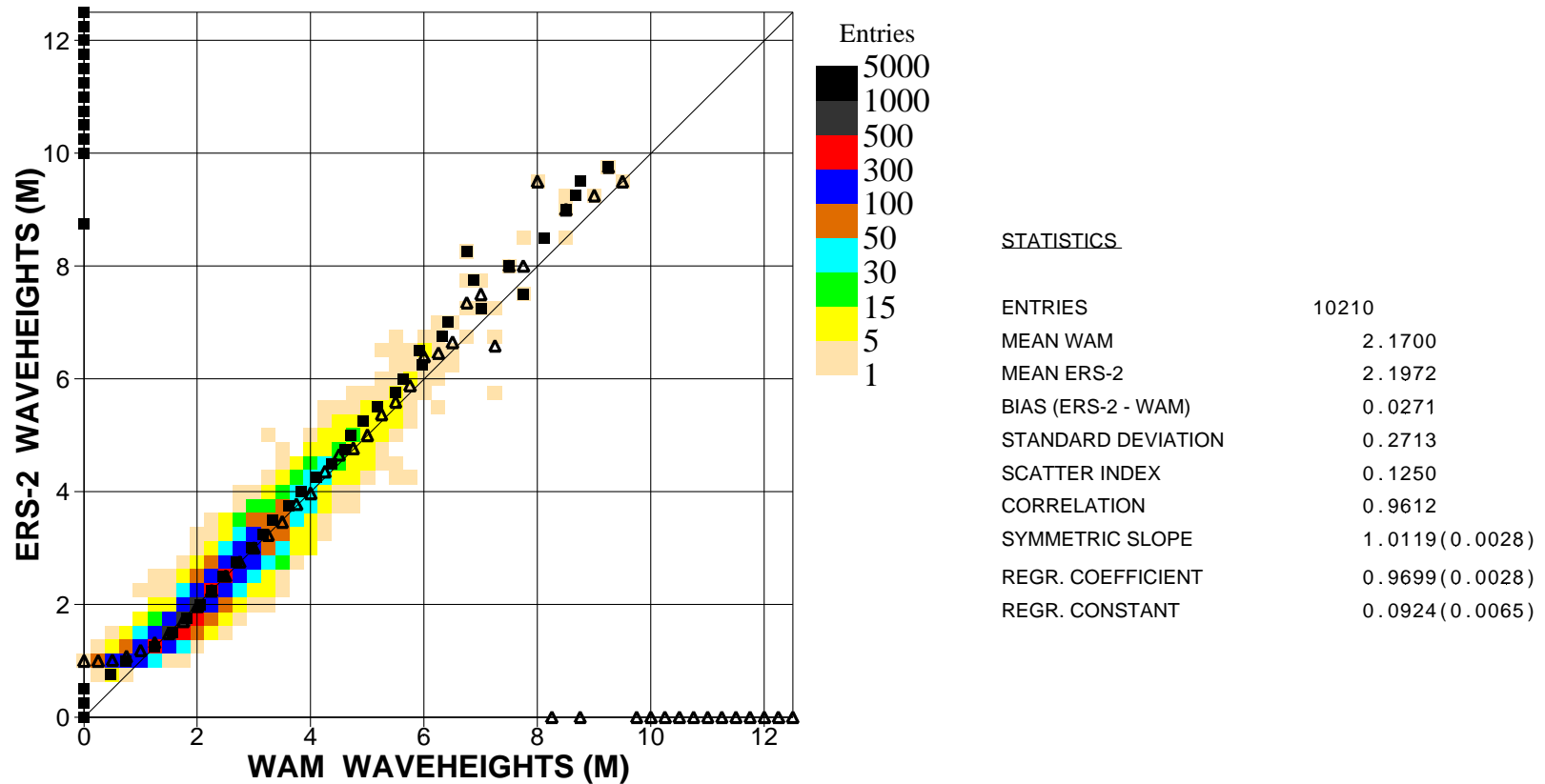


Figure 18. Comparison of ECMWF wave height results with ERS2 Altimeter wave height data for April 2002 (n.hem.)



Saleh Abdalla

European Centre for Medium Range Weather Forecasts
 Shinfield Park, Reading, Berkshire RG2 9AX, England
 Telephone: U.K. (0118) 949 9703, International (+44 118) 949 9703
 Telex 984 7908 ECMWF G, Telefax (0118) 986 9450, e-mail: abdalla@ecmwf.int

ECMWF Report on ERS-2 RA for April 2002

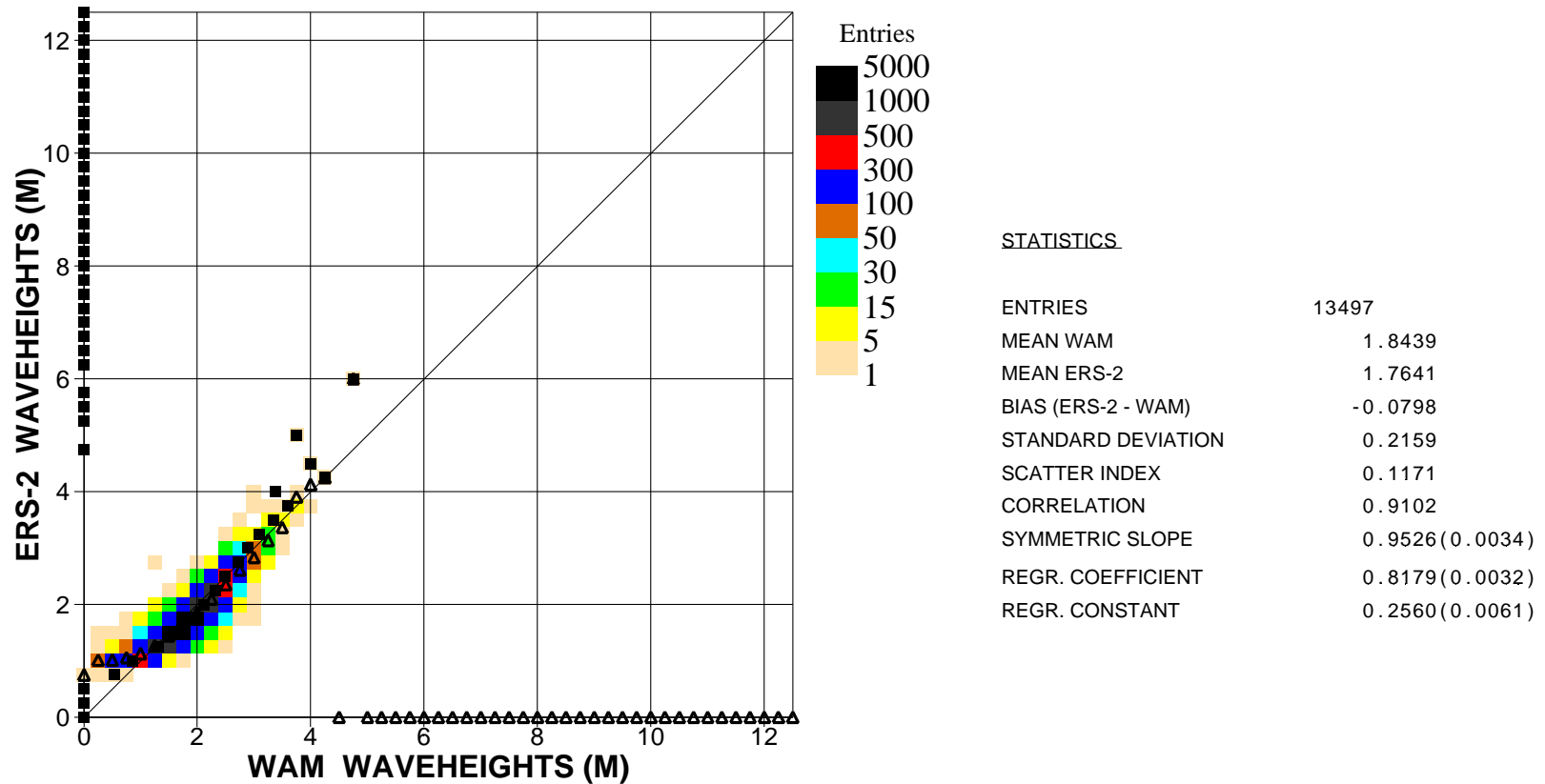


Figure 19. Comparison of ECMWF wave height results with ERS2 Altimeter wave height data for April 2002 (tropics)

Saleh Abdalla

European Centre for Medium Range Weather Forecasts
 Shinfield Park, Reading, Berkshire RG2 9AX, England
 Telephone: U.K. (0118) 949 9703, International (+44 118) 949 9703
 Telex 984 7908 ECMWF G, Telefax (0118) 986 9450, e-mail: abdalla@ecmwf.int

ECMWF Report on ERS-2 RA for April 2002

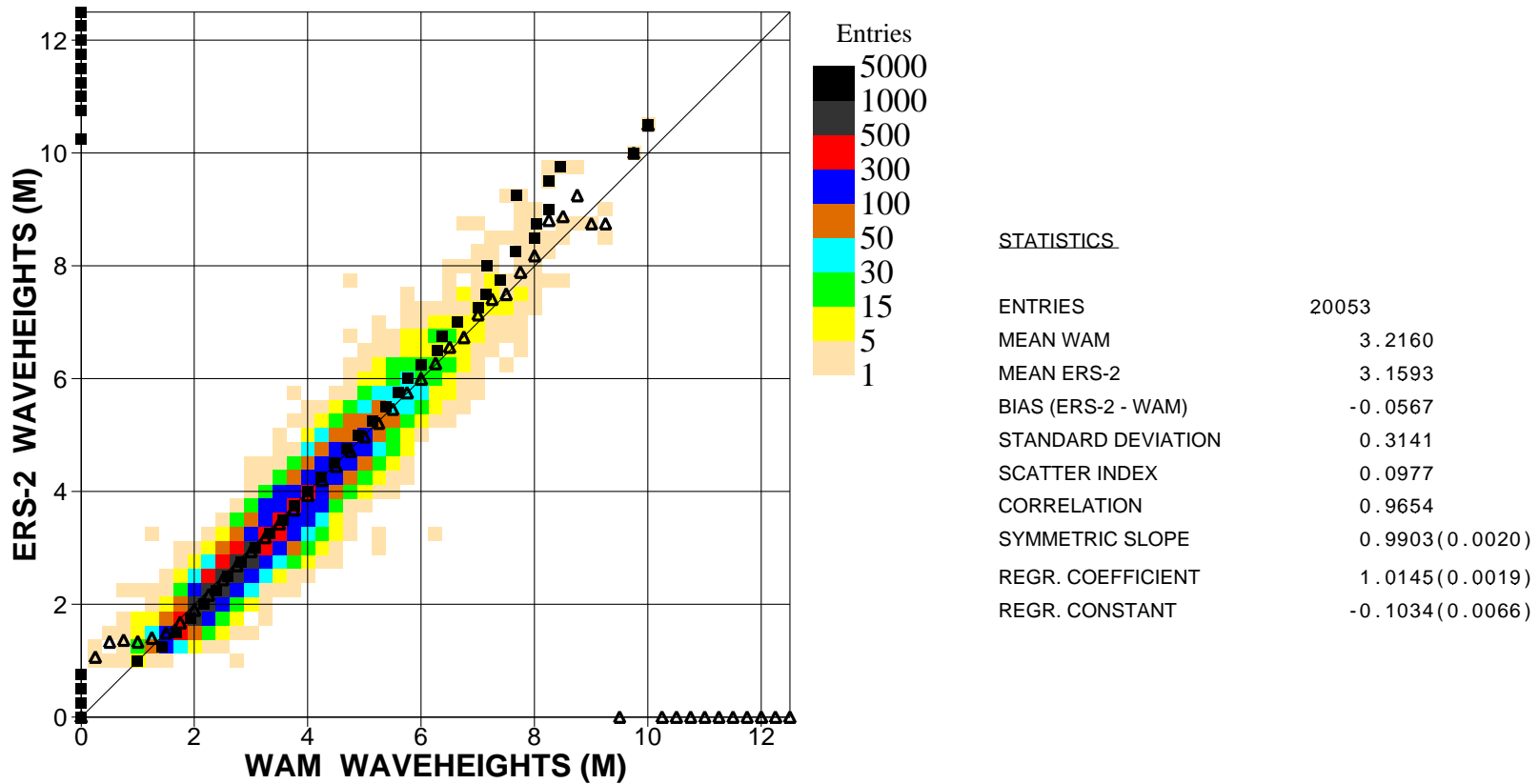


Figure 20. Comparison of ECMWF wave height results with ERS2 Altimeter wave height data for April 2002 (s.hem.)

Saleh Abdalla

European Centre for Medium Range Weather Forecasts
 Shinfield Park, Reading, Berkshire RG2 9AX, England
 Telephone: U.K. (0118) 949 9703, International (+44 118) 949 9703
 Telex 984 7908 ECMWF G, Telefax (0118) 986 9450, e-mail: abdalla@ecmwf.int

ECMWF Report on ERS-2 RA for April 2002

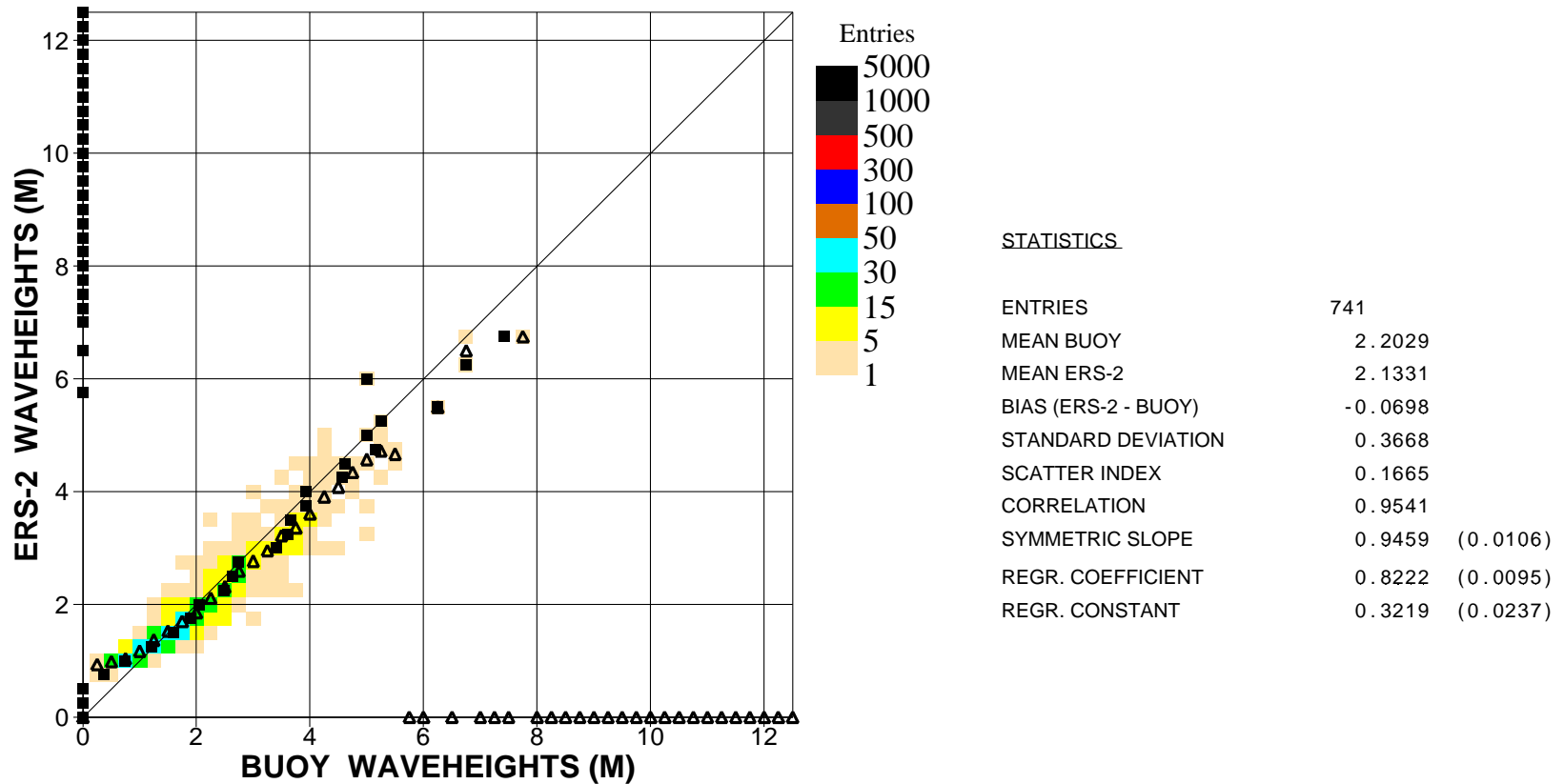


Figure 21. Comparison of buoy wave height observations with ERS2 Altimeter wave height data for April 2002 (global)

Saleh Abdalla

European Centre for Medium Range Weather Forecasts
 Shinfield Park, Reading, Berkshire RG2 9AX, England
 Telephone: U.K. (0118) 949 9703, International (+44 118) 949 9703
 Telex 984 7908 ECMWF G, Telefax (0118) 986 9450, e-mail: abdalla@ecmwf.int

ECMWF Report on ERS-2 RA for April 2002

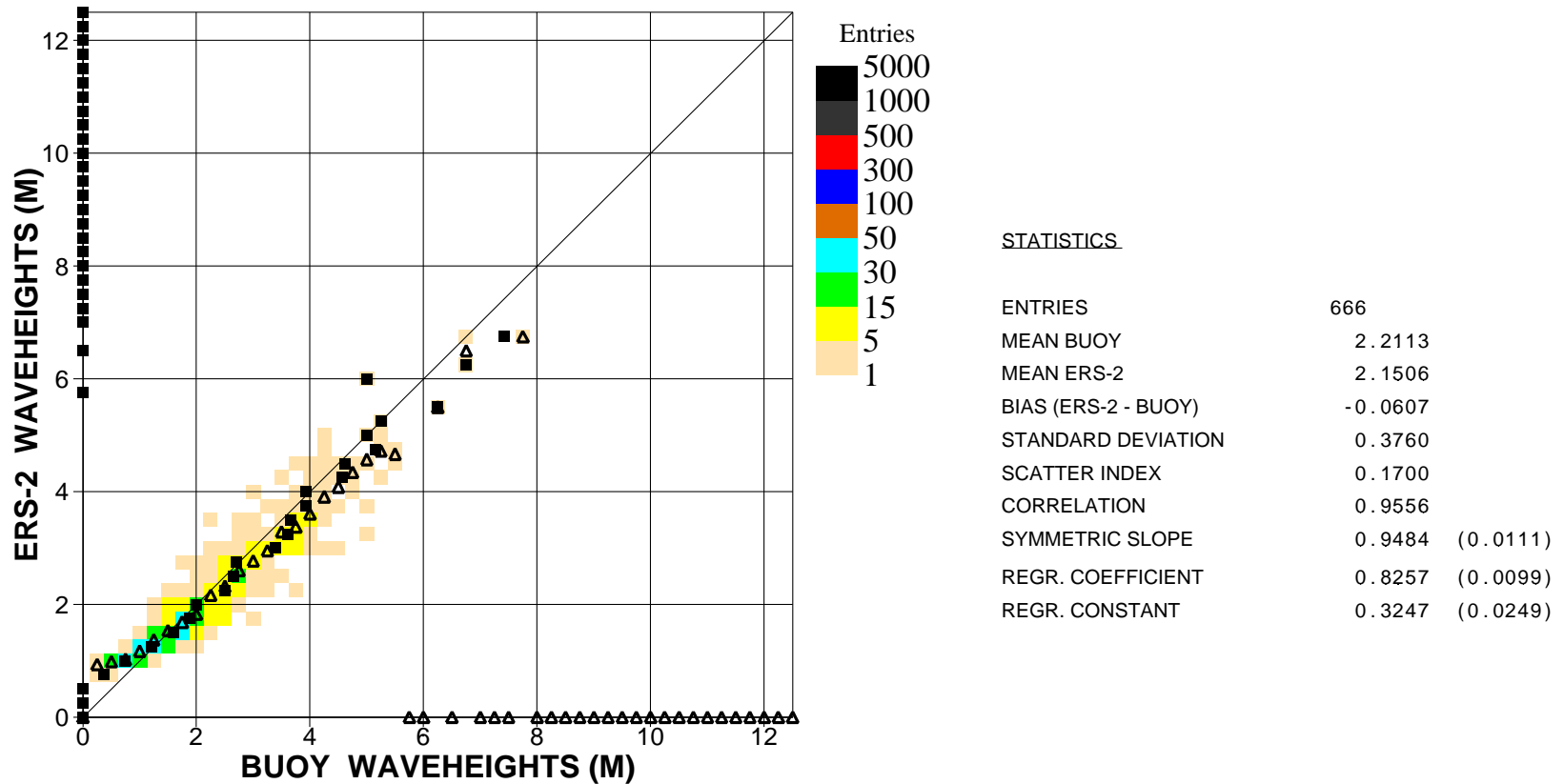


Figure 22. Comparison of buoy wave height observations with ERS2 Altimeter wave height data for April 2002 (n.hem.)

Saleh Abdalla

European Centre for Medium Range Weather Forecasts
 Shinfield Park, Reading, Berkshire RG2 9AX, England
 Telephone: U.K. (0118) 949 9703, International (+44 118) 949 9703
 Telex 984 7908 ECMWF G, Telefax (0118) 986 9450, e-mail: abdalla@ecmwf.int

ECMWF Report on ERS-2 RA for April 2002

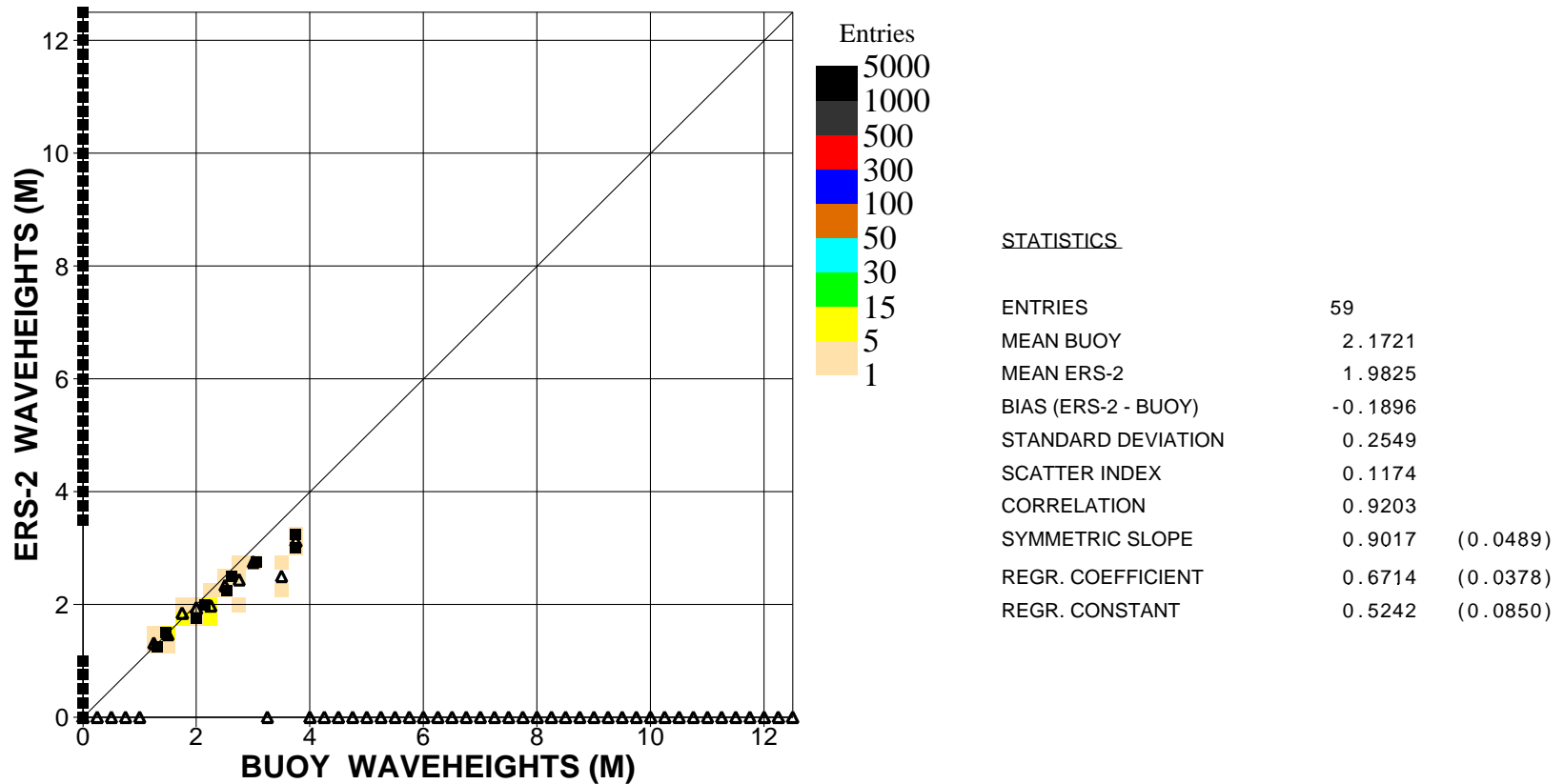


Figure 23. Comparison of buoy wave height observations with ERS2 Altimeter wave height data for April 2002 (hawaii)

Saleh Abdalla

European Centre for Medium Range Weather Forecasts
 Shinfield Park, Reading, Berkshire RG2 9AX, England
 Telephone: U.K. (0118) 949 9703, International (+44 118) 949 9703
 Telex 984 7908 ECMWF G, Telefax (0118) 986 9450, e-mail: abdalla@ecmwf.int

ECMWF Report on ERS-2 RA for April 2002

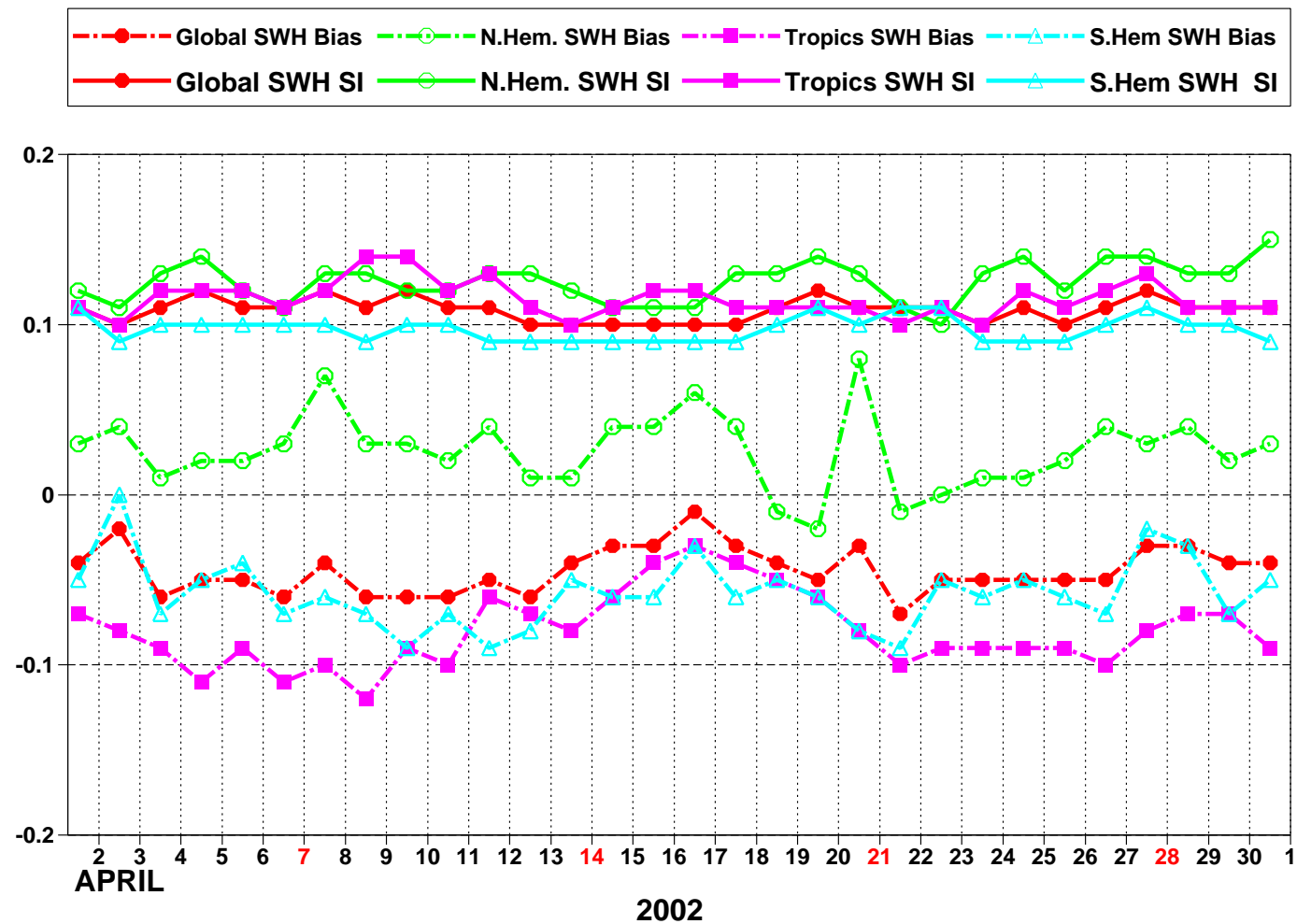


Figure 24: ERS-2 Altimeter wave heights: Timeseries of bias (ERS-2 - model) and scatter index (SI)

ECMWF Report on ERS-2 RA for April 2002

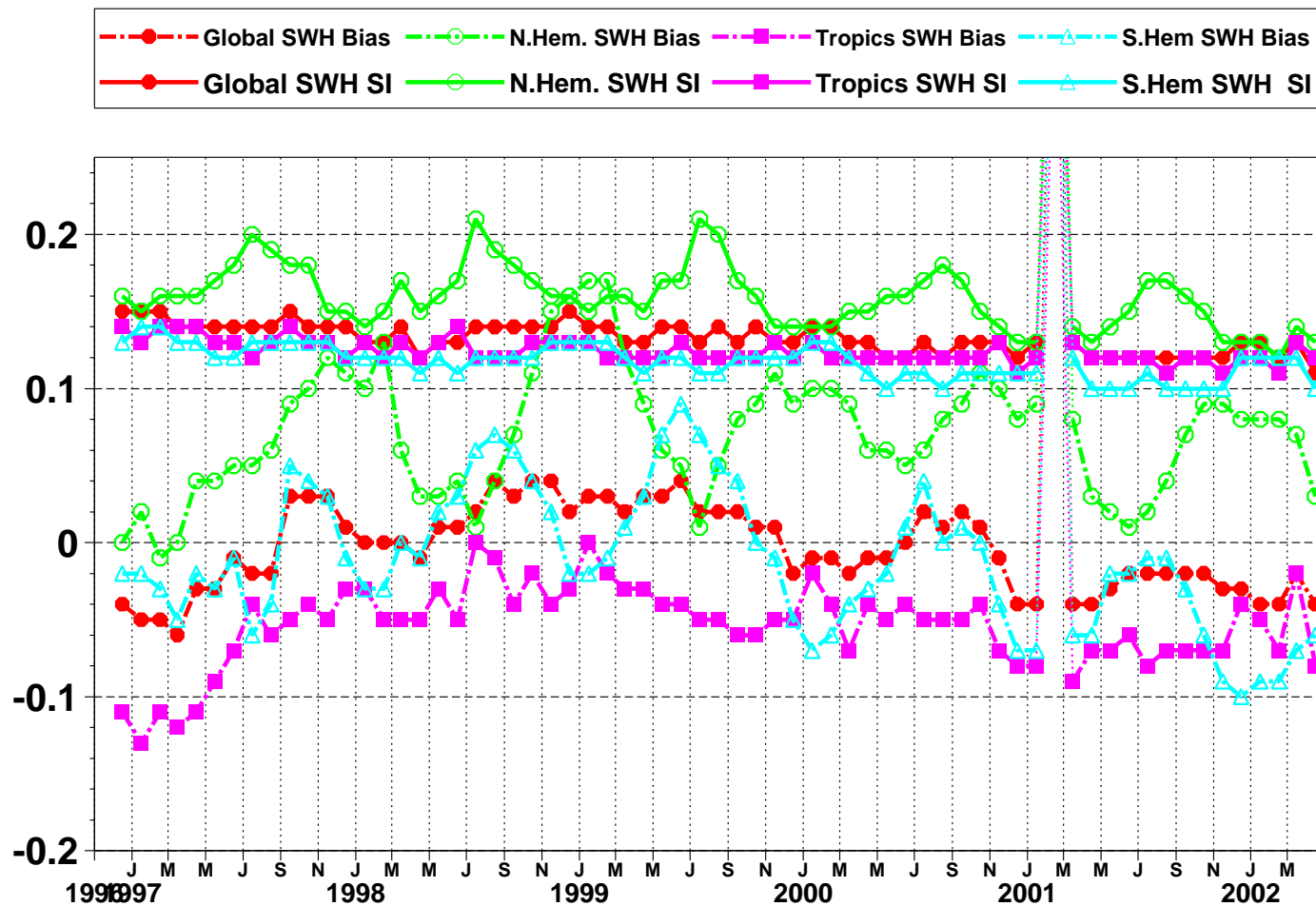


Figure 25: ERS-2 Altimeter wave heights: Timeseries of bias (ERS-2 - model) and scatter index (SI)

Saleh Abdalla

European Centre for Medium Range Weather Forecasts
 Shinfield Park, Reading, Berkshire RG2 9AX, England
 Telephone: U.K. (0118) 949 9703, International (+44 118) 949 9703
 Telex 984 7908 ECMWF G, Telefax (0118) 986 9450, e-mail: abdalla@ecmwf.int

ECMWF Report on ERS-2 RA for April 2002

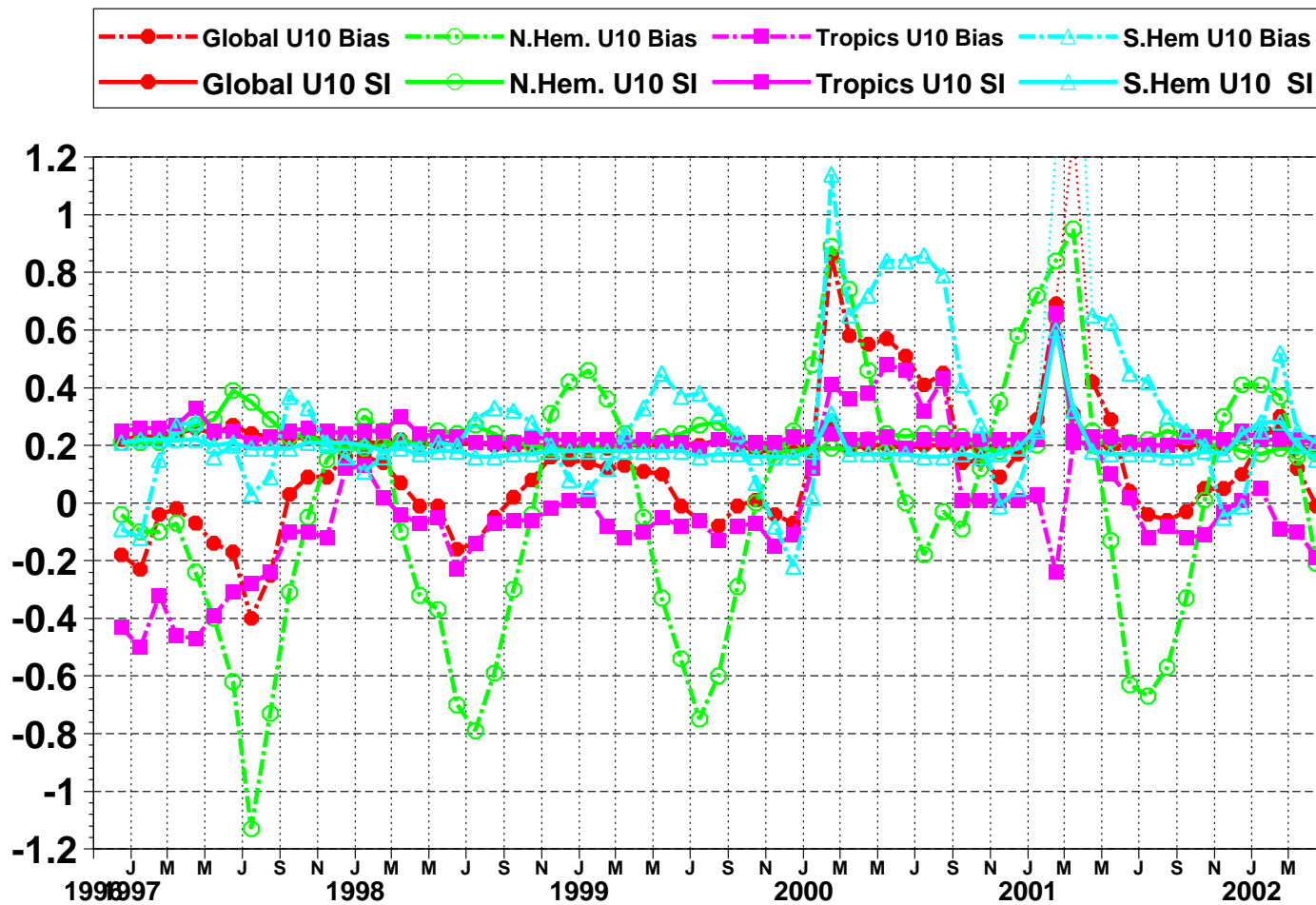


Figure 26: ERS-2 Altimeter wind speeds: Timeseries of bias (ERS-2 - model) and scatter index (SI)

Saleh Abdalla

European Centre for Medium Range Weather Forecasts
 Shinfield Park, Reading, Berkshire RG2 9AX, England
 Telephone: U.K. (0118) 949 9703, International (+44 118) 949 9703
 Telex 984 7908 ECMWF G, Telefax (0118) 986 9450, e-mail: abdalla@ecmwf.int