



MEMORANDUM

From : Pauline Cocevar and Siân O'Hara	Document Ref : IDEAS-VEG-OQC-REP-1331
To : Philippe Goryl, ESA	Date : 04 September 2013
CC : RAL, aatsr@eo-sppa.org	Issue : 1.0
	File ID : IDEAS-VEG-OQC-REP-1331 ATSR-1 and ATSR-2 Reprocessing Systematic QC Investigation v1 0.doc

SUBJECT : ATSR-1 and ATSR-2 Reprocessing Systematic QC Investigation

This document gives an overview of the investigations carried out to follow up on discrepancies reported by the IDEAS systematic QC checks on the ATSR-1 and ATSR-2 Envisat format data from the third reprocessing. IDEAS QC procedures for this reprocessing are outlined in the AATSR Third Reprocessing IDEAS QC Plan (IDEAS-VEG-OQC-PLN-1014).

Scope

ATSR-1 reprocessed data from 01 August 1991 to 17 December 1997 and ATSR-2 reprocessed data from 1 June 1995 to 22 June 2003 were analysed by the IDEAS systematic checks. The checks were performed on all of the Level 1, Level 2 NR and AR, meteo and browse products, and included thorough inspection of the product headers for consistency, correct contents and correct filesizes, processing the meteos to Level 3 using QUASAR as a means of verifying the product contents, and also verifying the completeness of the reprocessed datasets.

Results

The total number of products analysed was 112620 for ATSR-1 and 186059 for ATSR-2. Table 1 summarises the various discrepancies raised for investigation from the systematic QC checks on the headers, and the number of products affected in each case. Table 2 summarises the results of the QC checks on the L3 SST maps, which showed there to be a number of months that required some investigation. Table 6 to Table 12 in the Appendix lists the products affected by these issues.

Table 1. Systematic QC header check results for ATSR-1 and ATSR-2

QC issue description	Number of affected products		List of products
	ATSR-1	ATSR-2	
Invalid last longitudes in SPH	1141 (L1 & L2)	15 (L1 & L2)	Table 6
Invalid last latitudes <u>and</u> longitudes in SPH	15 (L1 & L2)	329 (L1 & L2)	Table 7
Missing MPH stop time	89 (L1 & L2)	55 (L1 & L2)	Table 8
MPH and SPH stop times disagree	14 (L1 & L2)	104 (L1 & L2)	Table 9
Missing SPH start and stop times	1 (L1)	0	Table 10

Table 2. Issues arising from inspection of the L3 SST maps

QC issue
ATSR-1
August 1991 Warm SSTs showing in the Arctic
June 1992 Hot SSTs off the Alaskan coast
Various months during the mission (43) See Table 11 Cold SSTs mainly in regions of persistent marine stratocumulus
ATSR-2
December 1995 Warm SSTs off the Antarctic coast
July 2001 Warm SSTs off north Russian coast
Various months during the mission (9) See Table 12 Cold SSTs off the coast of Vietnam and in coastal regions of the Gulf of Mexico

The investigations into the issues outlined in Table 1 and Table 2 are detailed in the subsections below.

It is to be noted that there were many products spread throughout the missions that contained minimum or maximum detector temperatures for certain channels that were outside the accepted values. When similar observations were made during the AATSR systematic QC, they coincided with times when the instrument was in outgassing mode, therefore it is assumed that this also applies to ATSR-1 and ATSR-2.

Invalid last longitudes in the SPH

Table 6 lists the products affected by invalid last longitudes in the SPH. The values were set to -2147483648, while the last latitude values in the SPH were set to 0. This seemed to affect only short products, and is considered to be a result of the values not being reset correctly for short products. Since the main dataset (MDS) seems unaffected, no action will be taken on these products.

Invalid last latitudes and longitudes in the SPH

Table 7 lists the products affected by invalid last latitudes and longitudes in the SPH. The values were set to -2147483648. This seemed to affect only short products, and is considered to be a result of the values not being reset correctly for short products. Since the MDS seems unaffected, no action will be taken on these products.

Missing MPH stop time

Table 8 lists the products affected by missing stop time in the MPH. This seemed to affect only short products, and is considered to be a result of the values not being reset correctly for short products. Since the MDS seems unaffected, no action will be taken on these products.

MPH and SPH stop times disagree

Table 9 lists the products affected by stop times disagreement of more than 5 seconds. Since the MPH contains details from the UBT products, and the SPH contains the details



of the ANX–ANX L1 product, some disagreement nearly always occurs, usually due to granularity issues when truncating at the ANX. A number of these products showed disagreements of around a minute, whereas others displayed disagreements of more than 1 hour. Investigations into some products displaying very large disagreements have shown them to be empty products and so they are likely to have been generated during outgassings.

Cross-checking of the L1 products in Table 9 against the list of products to be removed from the archive(s) due to outgassing showed some agreement in the orbit numbers involved. Table 3 displays the L1 product names of the relevant products, the difference between the two stop times, and whether the L1 featured in the ATSR-1/2 removal list. A number of the products were found to be on the removal list. The remaining products fell into one of two categories; either:

- 1) A small difference in stop times of around one minute (products in italic in Table 3). Investigations to date show these to have the same disagreement in the v2.0 dataset.
- 2) Products for ATSR-2 from December 1995 (products in bold in Table 3) displayed mostly large differences in time but all the bands seem to be empty. These will be referred to RAL to confirm that they should remain in the archive(s).

Table 3. Level 1 list of products displaying MPH/SPH stop time disagreement

Product	Difference in times (h:m:s)	Removal list
<i>AT1_TOA_1PURAL19920301_034136_000000002022_00032_03268_0000.E1</i>	00:01:07	no
<i>AT1_TOA_1PURAL19921208_081837_000000004008_00149_07308_0000.E1</i>	00:00:53	no
<i>AT1_TOA_1PURAL19950527_135759_000000008003_00181_20209_0000.E1</i>	00:00:45	no
<i>AT2_TOA_1PURAL19951126_101643_000000001006_00279_03139_0000.E2</i>	00:01:15	no
AT2_TOA_1PURAL19951222_220734_000000001007_00157_03518_0000.E2	01:15:49	no
AT2_TOA_1PURAL19951223_010454_000000001007_00159_03520_0000.E2	00:01:12	no
AT2_TOA_1PURAL19951224_224437_000000001007_00186_03547_0000.E2	01:15:49	no
AT2_TOA_1PURAL19951225_020225_000000001007_00188_03549_0000.E2	00:04:59	no
AT2_TOA_1PURAL19951225_221314_000000001007_00200_03561_0000.E2	01:15:46	no
AT2_TOA_1PURAL19951227_004057_000000001007_00216_03577_0000.E2	01:01:55	no
AT2_TOA_1PURAL19951228_033642_000000001007_00232_03593_0000.E2	01:05:40	no
AT2_TOA_1PURAL19951229_013600_000000001007_00245_03606_0000.E2	00:07:35	no
AT2_TOA_1PURAL19951229_214732_000000001007_00257_03618_0000.E2	01:15:48	no
AT2_TOA_1PURAL19951231_001747_000000001007_00273_03634_0000.E2	00:16:26	no
AT2_TOA_1PURAL19980606_221552_000000001032_00472_16358_0000.E2	01:15:50	yes
AT2_TOA_1PURAL19980607_044146_000000001032_00476_16362_0000.E2	00:18:57	yes
AT2_TOA_1PURAL19980607_231513_000000001032_00487_16373_0000.E2	00:02:28	yes
AT2_TOA_1PURAL20000705_173237_000000001054_00326_27234_0000.E2	01:13:15	yes
AT2_TOA_1PURAL20010527_181355_000000001063_00484_31901_0000.E2	00:58:04	yes
AT2_TOA_1PURAL20010528_141917_000000001063_00496_31913_0000.E2	00:45:26	yes
<i>AT2_TOA_1PURAL20021213_170015_000000001080_00054_39988_0000.E2</i>	00:00:10	no
<i>AT2_TOA_1PURAL20030406_003122_000000001083_00173_41610_0000.E2</i>	00:00:52	no
<i>AT2_TOA_1PURAL20030430_075955_000000001084_00020_41958_0000.E2</i>	00:00:42	no



Product	Difference in times (h:m:s)	Removal list
AT2_TOA_1PURAL20030511_053319_000000001084_00176_42114_0000.E2	00:01:03	no

Missing SPH start and stop times

Table 10 shows the one product that was affected by this issue:
AT1_TOA_1PURAL19941225_160307_000000007002_01216_18017_0000.E1

There were no L2 products processed from this L1, the L1 itself is not nominal and referral to the processing logs showed this to be a processing failure. It is recommended that this orbit be reprocessed.

Level 3 anomalies

Table 4 gives the details of the investigation into the L3 anomalies and associated recommended actions.

Table 4. Details of L3 anomaly investigations and recommended actions

QC issue	Investigation details	Recommended action
ATSR-1		
August 1991 Warm SSTs showing in the Arctic	First month of ERS-1 mission (commissioning period); investigation not considered necessary	None
June 1992 Hot SSTs off the Alaskan coast	Month with many instrument disruptions (3.6 micron failure investigations/outgassing/ERS-1 PDU anomaly)	Issue general warning for this month (June 1992)
Various months (43) during the mission Cold SSTs mainly in regions of persistent marine stratocumulus	August 1994 chosen as most extreme example. Anomaly map showed cold anomalies in relevant regions. Investigations into individual orbits confirmed cloud-clearing failures. See below for example figures	Issue general alert for these cold SST anomalies. See Table 11 for the list of affected months
ATSR-2		
December 1995 Warm SSTs off the Antarctic coast	Anomaly maps showed nothing untoward, with SSTs ~271 K in region. Data seems valid	None
July 2001 Warm SSTs off north Russian coast	Anomaly maps showed general warm anomalies in arctic/subarctic for this month but nothing extreme. Data seems valid	None
Various months (9) during the mission Cold SSTs off the coast of Vietnam and in coastal regions of the Gulf of Mexico	January 2002 chosen as representative. Anomaly maps showed cold anomalies in relevant regions. Investigations into individual orbits confirmed cloud-clearing failures. See below for example figures	Issue general alert for these cold SST anomalies. See Table 12 for the list of affected months

ATSR-1: August 1994

The L3 SST values for August 1994 are shown in Figure 1, where many blocks of dark blue pixels can easily be seen, particularly in regions of persistent marine stratocumulus.

(The circled area in Figure 1 is looked at in more detail below.) The L3 SST anomaly map for August 1004 is shown in Figure 2, where the dark blue/black areas show SSTs that are 10 K or more below the GOSTA monthly average. Plots of the number of orbits contributing to the L3 monthly data (not shown here) showed that there was a general lack of data points in these particular regions, therefore the few cases where identification of cloud failed had a disproportionate contribution to the averaged L3 data.

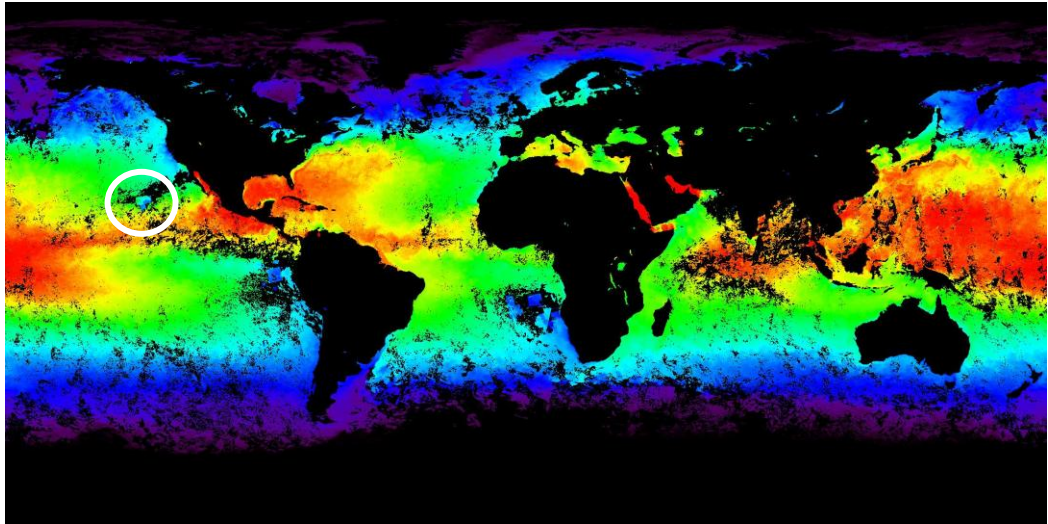


Figure 1. L3 monthly SST for August 1994 (ATSR-1)

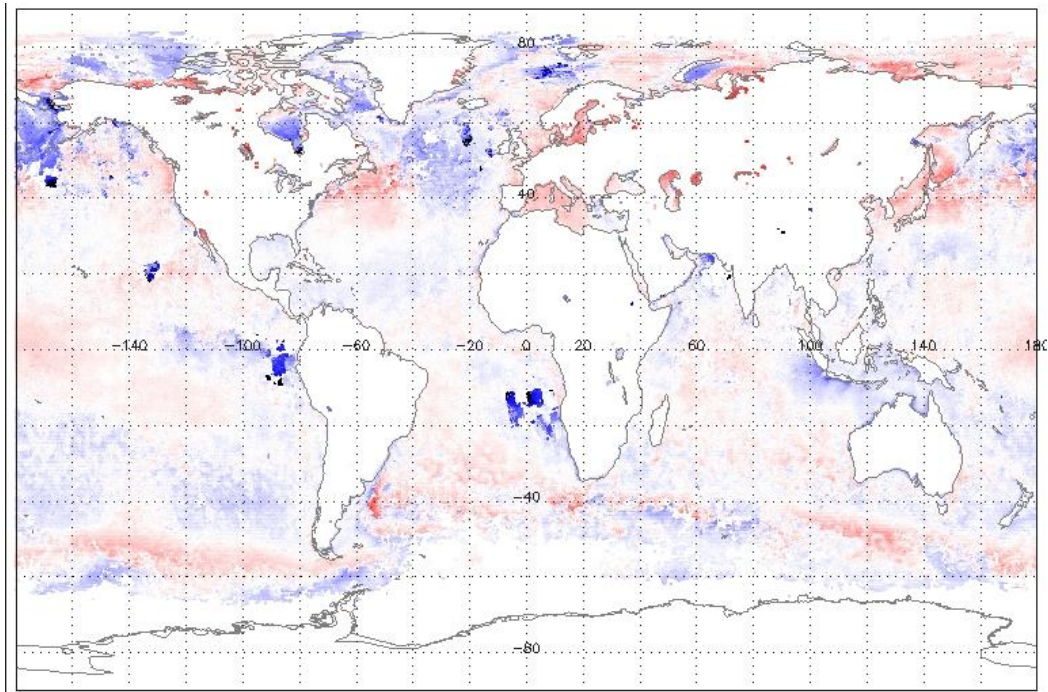


Figure 2. Monthly SST anomaly map for August 1994 (ATSR-1).

Daily anomaly maps (not shown) were also produced in order to pinpoint products that were contributing most to these anomalies. Product AT1_TOA_1PURAL19940803_065820_00000006999_99999_15945_0000.E1 was identified as giving a large contribution to the anomaly in the east Pacific in the northern hemisphere (circled region in Figure 1). Figure 3 displays the NR dual-view SST band (left) and the L1 11 micron band (right) for this product over the affected region. Note that

the dark blue SSTs in the middle of the image are ~286 K, while the sections of SST at the bottom of the figure are ~300 K, and those at the top are ~294 K – this strongly suggests that the mid-section SSTs are actually cloud temperatures. Reference to the 11 micron band to the right shows a featureless expanse in the middle, and obvious structure where the genuine SSTs were derived.

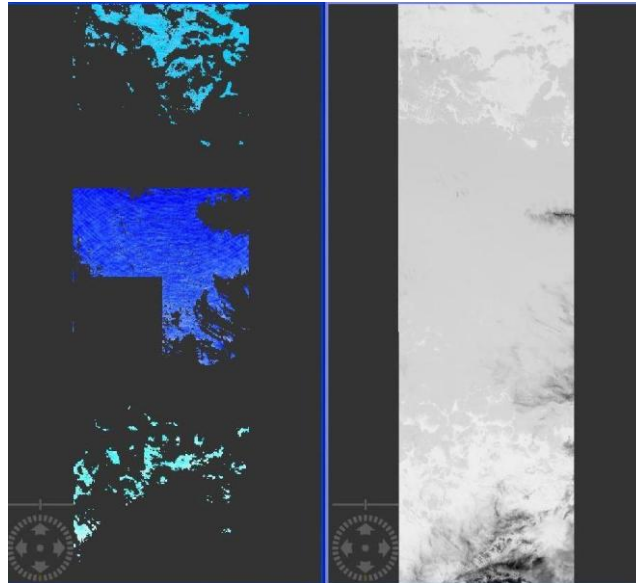


Figure 3. Detail from ATSR-1 orbit 15945: NR dual-view SST (left) and L1 11 micron band (right), showing cloud identification failure in the east Pacific.

ATSR-2: January 2002

Following the same procedure as outlined above for the ATSR-1 data of August 1994, we noted that the following products were contributing to the anomalous cold SSTs in ATSR-2 data from January 2002:

AT2_TOA_1PURAL20020101_163412_000000001070_00111_35035_0000.E2 (Gulf of Mexico) and

AT2_TOA_1PURAL20020127_025210_000000001070_00475_35399_0000.E2 (off the coast of Vietnam). Details from the products are given in Figure 4 and Figure 5, respectively. It can be readily seen that the cold SSTs are due to cloud identification failures.

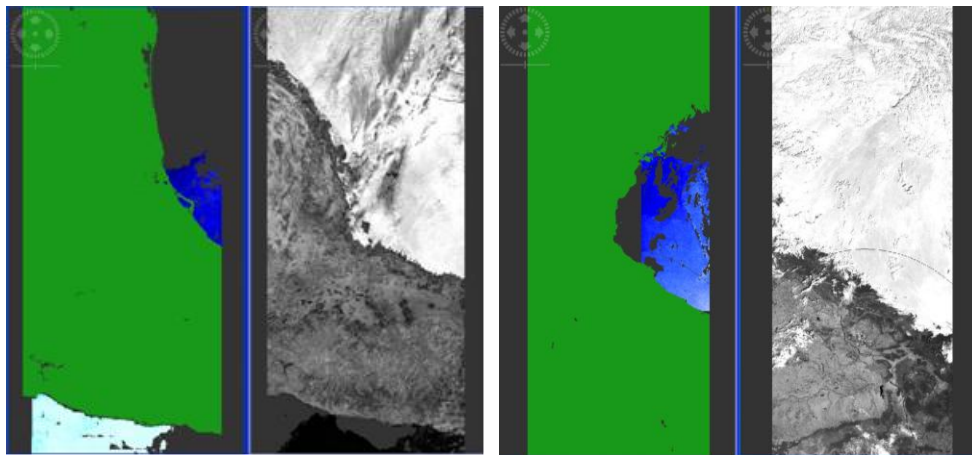


Figure 4. Detail from ATSR-2 orbit 35035: NR dual-view SST (left) and L1 nadir 1.6 micron band (right), showing cloud identification failure in the Gulf of Mexico.

Figure 5. Detail from ATSR-2 orbit 35399: NR dual-view SST (left) and L1 nadir 1.6 micron band (right), showing cloud identification failure near the coast of Vietnam.

Dataset completeness

The completeness checks were conducted by IDEAS and RAL. RAL confirmed that all L1 processing that was expected to take place had done so. Follow-on checks by IDEAS determined whether all L1 products had processed to all other product levels. Table 5 gives the number of missing L2 products per year compared with the L1 processed dataset.

Table 5. Number of missing L2 products

Year	ATSR-1		ATSR-2	
	NR	AR	NR	AR
1991	3	16	-	-
1992	64	101	-	-
1993	2	35	-	-
1994	2	293	-	-
1995	7	200	0	12
1996	9	25	0	10
1997	0	1	0	10
1998	-	-	0	15
1999	-	-	0	13
2000	-	-	0	23
2001	-	-	0	251
2002	-	-	2	56
2003	-	-	0	19
Total	87	671	2	409



Table 5 shows that there were 89 missing NR products and 1080 missing AR products. Most products are expected to be recoverable; an update to the archive will take place to include the recovered data and users will be informed when this has been done.

Note that a number of missing meteo and browse products were also identified, and these too will be incorporated in the archive at a later date.

Conclusions

The L1/L2 products that displayed invalid longitudes and/or latitudes in the SPH and missing stop times in the MPH are short products that have not had these values set correctly. Data within these products appear to be nominal.

The L1/L2 products that have differences in the stop times in the MPH and SPH of around a minute will remain in the archive. Some products that have differences of more than an hour are already listed on the products to be removed from the dataset. ATSR-2 products for December 1995 appear to be empty products; these will be referred to RAL for confirmation of their inclusion, or otherwise, in the archive(s).

The L1 product that had no SPH start or stop time is not nominal and was a processing failure. The original UBT inputs should be reprocessed to L1 and L2, if possible.

Completeness checks showed that many L2 products are missing (compared to the available L1 products); these need to be generated and added to the archive(s).

Level 3 investigations showed general discrepancies during the ATSR-1 commissioning period (to be expected) and also highlighted a month (June 1992) displaying many anomalies but during which ATSR-1 suffered many interruptions. Particular regions for both ATSR-1 and ATSR-2 which were prone to cloud identification failures were identified throughout the missions.

Actions

On the basis of the investigations that followed from the results of the systematic QC on the ATSR-1 and ATSR-2 reprocessed datasets, the following actions are requested:

- 1) From the MPH/SPH stop time disagreement: the ATSR-2 products from December 1995 are referred to RAL in order for them to reach a decision on their inclusion in the archive(s).
- 2) From the missing SPH times investigation: Orbit 18017 needs to be reprocessed and added to the archive(s).
- 3) The missing L2 products need to be generated and added to the archive(s).

In addition to the above actions for NEODC to complete, IDEAS will:

- Confirm that all products with small MPH/SPH stop time disagreements were also affected in v2.0. IDEAS will issue a note to RAL if there are still discrepancies.
- Issue a warning to users about the ATSR-1 commissioning period data and the June 1992 disruptions
- Issue an alert to users about ATSR-1 and ATSR-2 cloud-clearing failure locations and times

The information above will be included in the final report to be compiled from all QWG results.



Appendix

Table 6 to Table 10 list the products affected by the header QC issues given in Table 1.

Table 11 and Table 12 list the months affected by the L3 QC issues given in Table 2.

Table 6. Products affected by invalid last longitude values in the SPH

Products affected by invalid last longitude values
AT1_AST_BPSRAL19910825_073121_000000001011_00034_00561_0000.E1
AT1_NR_2PURAL19910825_073121_000000001011_00034_00561_0000.E1
AT1_TOA_1PURAL19910825_073121_000000001011_00034_00561_0000.E1
AT1_AR_2PURAL19911102_091324_000000001034_00035_01551_0000.E1
AT1_AST_BPSRAL19911102_091324_000000001034_00035_01551_0000.E1
AT1_MET_2PSRAL19911102_091324_000000001034_00035_01551_0000.E1
AT1_NR_2PURAL19911102_091324_000000001034_00035_01551_0000.E1
AT1_TOA_1PURAL19911102_091324_000000001034_00035_01551_0000.E1
AT1_AR_2PURAL19911117_035258_000000001039_00032_01763_0000.E1
AT1_AST_BPSRAL19911117_035258_000000001039_00032_01763_0000.E1
AT1_MET_2PSRAL19911117_035258_000000001039_00032_01763_0000.E1
AT1_NR_2PURAL19911117_035258_000000001039_00032_01763_0000.E1
AT1_TOA_1PURAL19911117_035258_000000001039_00032_01763_0000.E1
AT1_AR_2PURAL19911117_091321_000000001039_00035_01766_0000.E1
AT1_AST_BPSRAL19911117_091321_000000001039_00035_01766_0000.E1
AT1_MET_2PSRAL19911117_091321_000000001039_00035_01766_0000.E1
AT1_NR_2PURAL19911117_091321_000000001039_00035_01766_0000.E1
AT1_TOA_1PURAL19911117_091321_000000001039_00035_01766_0000.E1
AT1_AR_2PURAL19911126_154714_000000001042_00039_01899_0000.E1
AT1_AST_BPSRAL19911126_154714_000000001042_00039_01899_0000.E1
AT1_MET_2PSRAL19911126_154714_000000001042_00039_01899_0000.E1
AT1_NR_2PURAL19911126_154714_000000001042_00039_01899_0000.E1
AT1_TOA_1PURAL19911126_154714_000000001042_00039_01899_0000.E1
AT1_NR_2PURAL19920114_152142_000000002007_00010_02601_0000.E1
AT1_TOA_1PURAL19920114_152142_000000002007_00010_02601_0000.E1
AT1_AR_2PURAL19920119_040011_000000002008_00032_02666_0000.E1
AT1_MET_2PSRAL19920119_040011_000000002008_00032_02666_0000.E1
AT1_NR_2PURAL19920119_040011_000000002008_00032_02666_0000.E1
AT1_TOA_1PURAL19920119_040011_000000002008_00032_02666_0000.E1
AT1_AR_2PURAL19920121_095416_000000002009_00021_02698_0000.E1
AT1_MET_2PSRAL19920121_095416_000000002009_00021_02698_0000.E1
AT1_NR_2PURAL19920121_095416_000000002009_00021_02698_0000.E1
AT1_TOA_1PURAL19920121_095416_000000002009_00021_02698_0000.E1
AT1_AR_2PURAL19920121_224014_000000002009_00029_02706_0000.E1
AT1_MET_2PSRAL19920121_224014_000000002009_00029_02706_0000.E1
AT1_NR_2PURAL19920121_224014_000000002009_00029_02706_0000.E1
AT1_TOA_1PURAL19920121_224014_000000002009_00029_02706_0000.E1
AT1_AR_2PURAL19920225_145123_000000002021_00010_03203_0000.E1
AT1_MET_2PSRAL19920225_145123_000000002021_00010_03203_0000.E1
AT1_NR_2PURAL19920225_145123_000000002021_00010_03203_0000.E1
AT1_TOA_1PURAL19920225_145123_000000002021_00010_03203_0000.E1
AT1_AR_2PURAL19920226_095415_000000002021_00021_03214_0000.E1
AT1_MET_2PSRAL19920226_095415_000000002021_00021_03214_0000.E1



Products affected by invalid last longitude values
AT1_NR_2PURAL19920226_095415_000000002021_00021_03214_0000.E1
AT1_TOA_1PURAL19920226_095415_000000002021_00021_03214_0000.E1
AT1_AR_2PURAL19920226_224012_000000002021_00029_03222_0000.E1
AT1_MET_2PSRAL19920226_224012_000000002021_00029_03222_0000.E1
AT1_NR_2PURAL19920226_224012_000000002021_00029_03222_0000.E1
AT1_TOA_1PURAL19920226_224012_000000002021_00029_03222_0000.E1
AT1_AR_2PURAL19920229_095414_000000002022_00021_03257_0000.E1
AT1_MET_2PSRAL19920229_095414_000000002022_00021_03257_0000.E1
AT1_NR_2PURAL19920229_095414_000000002022_00021_03257_0000.E1
AT1_TOA_1PURAL19920229_095414_000000002022_00021_03257_0000.E1
AT1_AR_2PURAL19920301_022057_000000002022_00031_03267_0000.E1
AT1_MET_2PSRAL19920301_022057_000000002022_00031_03267_0000.E1
AT1_NR_2PURAL19920301_022057_000000002022_00031_03267_0000.E1
AT1_TOA_1PURAL19920301_022057_000000002022_00031_03267_0000.E1
AT1_AR_2PURAL19920301_054306_000000002022_00033_03269_0000.E1
AT1_MET_2PSRAL19920301_054306_000000002022_00033_03269_0000.E1
AT1_NR_2PURAL19920301_054306_000000002022_00033_03269_0000.E1
AT1_TOA_1PURAL19920301_054306_000000002022_00033_03269_0000.E1
AT1_AR_2PURAL19920309_105700_000000002025_00022_03387_0000.E1
AT1_MET_2PSRAL19920309_105700_000000002025_00022_03387_0000.E1
AT1_NR_2PURAL19920309_105700_000000002025_00022_03387_0000.E1
AT1_TOA_1PURAL19920309_105700_000000002025_00022_03387_0000.E1
AT1_AR_2PURAL19920309_162712_000000002025_00025_03390_0000.E1
AT1_MET_2PSRAL19920309_162712_000000002025_00025_03390_0000.E1
AT1_NR_2PURAL19920309_162712_000000002025_00025_03390_0000.E1
AT1_TOA_1PURAL19920309_162712_000000002025_00025_03390_0000.E1
AT1_AR_2PURAL19920316_022058_000000002027_00031_03482_0000.E1
AT1_MET_2PSRAL19920316_022058_000000002027_00031_03482_0000.E1
AT1_NR_2PURAL19920316_022058_000000002027_00031_03482_0000.E1
AT1_TOA_1PURAL19920316_022058_000000002027_00031_03482_0000.E1
AT1_AR_2PURAL19920317_145123_000000002028_00010_03504_0000.E1
AT1_MET_2PSRAL19920317_145123_000000002028_00010_03504_0000.E1
AT1_NR_2PURAL19920317_145123_000000002028_00010_03504_0000.E1
AT1_TOA_1PURAL19920317_145123_000000002028_00010_03504_0000.E1
AT1_NR_2PURAL19920319_002039_000000002028_00030_03524_0000.E1
AT1_TOA_1PURAL19920319_002039_000000002028_00030_03524_0000.E1
AT1_AR_2PURAL19920319_022056_000000002028_00031_03525_0000.E1
AT1_MET_2PSRAL19920319_022056_000000002028_00031_03525_0000.E1
AT1_NR_2PURAL19920319_022056_000000002028_00031_03525_0000.E1
AT1_TOA_1PURAL19920319_022056_000000002028_00031_03525_0000.E1
AT1_AR_2PURAL19920319_092045_000000002028_00035_03529_0000.E1
AT1_MET_2PSRAL19920319_092045_000000002028_00035_03529_0000.E1
AT1_NR_2PURAL19920319_092045_000000002028_00035_03529_0000.E1
AT1_TOA_1PURAL19920319_092045_000000002028_00035_03529_0000.E1
AT1_AR_2PURAL19920324_095414_000000002030_00021_03601_0000.E1
AT1_MET_2PSRAL19920324_095414_000000002030_00021_03601_0000.E1
AT1_NR_2PURAL19920324_095414_000000002030_00021_03601_0000.E1
AT1_TOA_1PURAL19920324_095414_000000002030_00021_03601_0000.E1
AT1_AR_2PURAL19920324_162710_000000002030_00025_03605_0000.E1
AT1_MET_2PSRAL19920324_162710_000000002030_00025_03605_0000.E1
AT1_NR_2PURAL19920324_162710_000000002030_00025_03605_0000.E1



Products affected by invalid last longitude values
AT1_TOA_1PURAL19920324_162710_000000002030_00025_03605_0000.E1
AT1_AR_2PURAL19920330_224011_000000002032_00029_03695_0000.E1
AT1_MET_2PSRAL19920330_224011_000000002032_00029_03695_0000.E1
AT1_NR_2PURAL19920330_224011_000000002032_00029_03695_0000.E1
AT1_TOA_1PURAL19920330_224011_000000002032_00029_03695_0000.E1
AT1_AR_2PURAL19920331_040009_000000002032_00032_03698_0000.E1
AT1_MET_2PSRAL19920331_040009_000000002032_00032_03698_0000.E1
AT1_NR_2PURAL19920331_040009_000000002032_00032_03698_0000.E1
AT1_TOA_1PURAL19920331_040009_000000002032_00032_03698_0000.E1
AT1_AR_2PURAL19920405_131655_000000003001_00123_03775_0000.E1
AT1_MET_2PSRAL19920405_131655_000000003001_00123_03775_0000.E1
AT1_NR_2PURAL19920405_131655_000000003001_00123_03775_0000.E1
AT1_TOA_1PURAL19920405_131655_000000003001_00123_03775_0000.E1
AT1_AR_2PURAL19920408_012426_000000003001_00159_03811_0000.E1
AT1_MET_2PSRAL19920408_012426_000000003001_00159_03811_0000.E1
AT1_NR_2PURAL19920408_012426_000000003001_00159_03811_0000.E1
AT1_TOA_1PURAL19920408_012426_000000003001_00159_03811_0000.E1
AT1_AST_BPSRAL19920427_081522_000000004001_00435_04087_0000.E1
AT1_NR_2PURAL19920427_081522_000000004001_00435_04087_0000.E1
AT1_TOA_1PURAL19920427_081522_000000004001_00435_04087_0000.E1
AT1_AR_2PURAL19920513_012434_000000004002_00159_04312_0000.E1
AT1_AST_BPSRAL19920513_012434_000000004002_00159_04312_0000.E1
AT1_MET_2PSRAL19920513_012434_000000004002_00159_04312_0000.E1
AT1_NR_2PURAL19920513_012434_000000004002_00159_04312_0000.E1
AT1_TOA_1PURAL19920513_012434_000000004002_00159_04312_0000.E1
AT1_AR_2PURAL19920513_100529_000000004002_00164_04317_0000.E1
AT1_AST_BPSRAL19920513_100529_000000004002_00164_04317_0000.E1
AT1_MET_2PSRAL19920513_100529_000000004002_00164_04317_0000.E1
AT1_NR_2PURAL19920513_100529_000000004002_00164_04317_0000.E1
AT1_TOA_1PURAL19920513_100529_000000004002_00164_04317_0000.E1
AT1_AR_2PURAL19920603_020454_000000004002_00460_04613_0000.E1
AT1_AST_BPSRAL19920603_020454_000000004002_00460_04613_0000.E1
AT1_MET_2PSRAL19920603_020454_000000004002_00460_04613_0000.E1
AT1_NR_2PURAL19920603_020454_000000004002_00460_04613_0000.E1
AT1_TOA_1PURAL19920603_020454_000000004002_00460_04613_0000.E1
AT1_AR_2PURAL19920606_053307_000000004003_00004_04658_0000.E1
AT1_AST_BPSRAL19920606_053307_000000004003_00004_04658_0000.E1
AT1_MET_2PSRAL19920606_053307_000000004003_00004_04658_0000.E1
AT1_NR_2PURAL19920606_053307_000000004003_00004_04658_0000.E1
AT1_TOA_1PURAL19920606_053307_000000004003_00004_04658_0000.E1
AT1_AR_2PURAL19920826_231627_000000004005_00172_05828_0000.E1
AT1_AST_BPSRAL19920826_231627_000000004005_00172_05828_0000.E1
AT1_MET_2PSRAL19920826_231627_000000004005_00172_05828_0000.E1
AT1_NR_2PURAL19920826_231627_000000004005_00172_05828_0000.E1
AT1_TOA_1PURAL19920826_231627_000000004005_00172_05828_0000.E1
AT1_AR_2PURAL19920908_055803_000000004005_00348_06004_0000.E1
AT1_AST_BPSRAL19920908_055803_000000004005_00348_06004_0000.E1
AT1_MET_2PSRAL19920908_055803_000000004005_00348_06004_0000.E1
AT1_NR_2PURAL19920908_055803_000000004005_00348_06004_0000.E1
AT1_TOA_1PURAL19920908_055803_000000004005_00348_06004_0000.E1



Products affected by invalid last longitude values
AT1_AR_2PURAL19920925_022215_000000004006_00088_06245_0000.E1
AT1_AST_BPSRAL19920925_022215_000000004006_00088_06245_0000.E1
AT1_MET_2PSRAL19920925_022215_000000004006_00088_06245_0000.E1
AT1_NR_2PURAL19920925_022215_000000004006_00088_06245_0000.E1
AT1_TOA_1PURAL19920925_022215_000000004006_00088_06245_0000.E1
AT1_AR_2PURAL19920928_103103_000000004006_00136_06293_0000.E1
AT1_AST_BPSRAL19920928_103103_000000004006_00136_06293_0000.E1
AT1_MET_2PSRAL19920928_103103_000000004006_00136_06293_0000.E1
AT1_NR_2PURAL19920928_103103_000000004006_00136_06293_0000.E1
AT1_TOA_1PURAL19920928_103103_000000004006_00136_06293_0000.E1
AT1_AST_BPSRAL19921010_230238_000000004006_00315_06472_0000.E1
AT1_NR_2PURAL19921010_230238_000000004006_00315_06472_0000.E1
AT1_TOA_1PURAL19921010_230238_000000004006_00315_06472_0000.E1
AT1_AR_2PURAL19921013_230753_000000004006_00358_06515_0000.E1
AT1_AST_BPSRAL19921013_230753_000000004006_00358_06515_0000.E1
AT1_MET_2PSRAL19921013_230753_000000004006_00358_06515_0000.E1
AT1_NR_2PURAL19921013_230753_000000004006_00358_06515_0000.E1
AT1_TOA_1PURAL19921013_230753_000000004006_00358_06515_0000.E1
AT1_AR_2PURAL19921014_003535_000000004006_00359_06516_0000.E1
AT1_AST_BPSRAL19921014_003535_000000004006_00359_06516_0000.E1
AT1_MET_2PSRAL19921014_003535_000000004006_00359_06516_0000.E1
AT1_NR_2PURAL19921014_003535_000000004006_00359_06516_0000.E1
AT1_TOA_1PURAL19921014_003535_000000004006_00359_06516_0000.E1
AT1_AR_2PURAL19921014_191730_000000004006_00370_06527_0000.E1
AT1_AST_BPSRAL19921014_191730_000000004006_00370_06527_0000.E1
AT1_MET_2PSRAL19921014_191730_000000004006_00370_06527_0000.E1
AT1_NR_2PURAL19921014_191730_000000004006_00370_06527_0000.E1
AT1_TOA_1PURAL19921014_191730_000000004006_00370_06527_0000.E1
AT1_AR_2PURAL19921016_231331_000000004006_00401_06558_0000.E1
AT1_AST_BPSRAL19921016_231331_000000004006_00401_06558_0000.E1
AT1_MET_2PSRAL19921016_231331_000000004006_00401_06558_0000.E1
AT1_NR_2PURAL19921016_231331_000000004006_00401_06558_0000.E1
AT1_TOA_1PURAL19921016_231331_000000004006_00401_06558_0000.E1
AT1_AR_2PURAL19921111_144056_000000004007_00267_06925_0000.E1
AT1_AST_BPSRAL19921111_144056_000000004007_00267_06925_0000.E1
AT1_MET_2PSRAL19921111_144056_000000004007_00267_06925_0000.E1
AT1_NR_2PURAL19921111_144056_000000004007_00267_06925_0000.E1
AT1_TOA_1PURAL19921111_144056_000000004007_00267_06925_0000.E1
AT1_AST_BPSRAL19921111_161903_000000004007_00268_06926_0000.E1
AT1_NR_2PURAL19921111_161903_000000004007_00268_06926_0000.E1
AT1_TOA_1PURAL19921111_161903_000000004007_00268_06926_0000.E1
AT1_AR_2PURAL19921111_175757_000000004007_00269_06927_0000.E1
AT1_AST_BPSRAL19921111_175757_000000004007_00269_06927_0000.E1
AT1_MET_2PSRAL19921111_175757_000000004007_00269_06927_0000.E1
AT1_NR_2PURAL19921111_175757_000000004007_00269_06927_0000.E1
AT1_TOA_1PURAL19921111_175757_000000004007_00269_06927_0000.E1
AT1_AR_2PURAL19921111_211657_000000004007_00271_06929_0000.E1
AT1_AST_BPSRAL19921111_211657_000000004007_00271_06929_0000.E1
AT1_MET_2PSRAL19921111_211657_000000004007_00271_06929_0000.E1
AT1_NR_2PURAL19921111_211657_000000004007_00271_06929_0000.E1
AT1_TOA_1PURAL19921111_211657_000000004007_00271_06929_0000.E1



Products affected by invalid last longitude values
AT1_AR_2PURAL19921112_035257_000000004007_00275_06933_0000.E1
AT1_AST_BPSRAL19921112_035257_000000004007_00275_06933_0000.E1
AT1_MET_2PSRAL19921112_035257_000000004007_00275_06933_0000.E1
AT1_NR_2PURAL19921112_035257_000000004007_00275_06933_0000.E1
AT1_TOA_1PURAL19921112_035257_000000004007_00275_06933_0000.E1
AT1_AR_2PURAL19921112_053601_000000004007_00276_06934_0000.E1
AT1_AST_BPSRAL19921112_053601_000000004007_00276_06934_0000.E1
AT1_MET_2PSRAL19921112_053601_000000004007_00276_06934_0000.E1
AT1_NR_2PURAL19921112_053601_000000004007_00276_06934_0000.E1
AT1_TOA_1PURAL19921112_053601_000000004007_00276_06934_0000.E1
AT1_AST_BPSRAL19921113_151716_000000004007_00296_06954_0000.E1
AT1_NR_2PURAL19921113_151716_000000004007_00296_06954_0000.E1
AT1_TOA_1PURAL19921113_151716_000000004007_00296_06954_0000.E1
AT1_AR_2PURAL19921114_113043_000000004007_00308_06966_0000.E1
AT1_AST_BPSRAL19921114_113043_000000004007_00308_06966_0000.E1
AT1_MET_2PSRAL19921114_113043_000000004007_00308_06966_0000.E1
AT1_NR_2PURAL19921114_113043_000000004007_00308_06966_0000.E1
AT1_TOA_1PURAL19921114_113043_000000004007_00308_06966_0000.E1
AT1_AR_2PURAL19921114_144629_000000004007_00310_06968_0000.E1
AT1_AST_BPSRAL19921114_144629_000000004007_00310_06968_0000.E1
AT1_MET_2PSRAL19921114_144629_000000004007_00310_06968_0000.E1
AT1_NR_2PURAL19921114_144629_000000004007_00310_06968_0000.E1
AT1_TOA_1PURAL19921114_144629_000000004007_00310_06968_0000.E1
AT1_AST_BPSRAL19921115_021911_000000004007_00317_06975_0000.E1
AT1_NR_2PURAL19921115_021911_000000004007_00317_06975_0000.E1
AT1_TOA_1PURAL19921115_021911_000000004007_00317_06975_0000.E1
AT1_AR_2PURAL19921115_123802_000000004007_00323_06981_0000.E1
AT1_AST_BPSRAL19921115_123802_000000004007_00323_06981_0000.E1
AT1_MET_2PSRAL19921115_123802_000000004007_00323_06981_0000.E1
AT1_NR_2PURAL19921115_123802_000000004007_00323_06981_0000.E1
AT1_TOA_1PURAL19921115_123802_000000004007_00323_06981_0000.E1
AT1_AR_2PURAL19921115_155337_000000004007_00325_06983_0000.E1
AT1_AST_BPSRAL19921115_155337_000000004007_00325_06983_0000.E1
AT1_MET_2PSRAL19921115_155337_000000004007_00325_06983_0000.E1
AT1_NR_2PURAL19921115_155337_000000004007_00325_06983_0000.E1
AT1_TOA_1PURAL19921115_155337_000000004007_00325_06983_0000.E1
AT1_AR_2PURAL19921116_134502_000000004007_00338_06996_0000.E1
AT1_AST_BPSRAL19921116_134502_000000004007_00338_06996_0000.E1
AT1_MET_2PSRAL19921116_134502_000000004007_00338_06996_0000.E1
AT1_NR_2PURAL19921116_134502_000000004007_00338_06996_0000.E1
AT1_TOA_1PURAL19921116_134502_000000004007_00338_06996_0000.E1
AT1_AR_2PURAL19921121_221759_000000004007_00415_07073_0000.E1
AT1_AST_BPSRAL19921121_221759_000000004007_00415_07073_0000.E1
AT1_MET_2PSRAL19921121_221759_000000004007_00415_07073_0000.E1
AT1_NR_2PURAL19921121_221759_000000004007_00415_07073_0000.E1
AT1_TOA_1PURAL19921121_221759_000000004007_00415_07073_0000.E1
AT1_AR_2PURAL19921122_052149_000000004007_00419_07077_0000.E1
AT1_AST_BPSRAL19921122_052149_000000004007_00419_07077_0000.E1
AT1_MET_2PSRAL19921122_052149_000000004007_00419_07077_0000.E1
AT1_NR_2PURAL19921122_052149_000000004007_00419_07077_0000.E1
AT1_TOA_1PURAL19921122_052149_000000004007_00419_07077_0000.E1



Products affected by invalid last longitude values
AT1_AR_2PURAL19921122_153406_00000004007_00425_07083_0000.E1
AT1_AST_BPSRAL19921122_153406_00000004007_00425_07083_0000.E1
AT1_MET_2PSRAL19921122_153406_00000004007_00425_07083_0000.E1
AT1_NR_2PURAL19921122_153406_00000004007_00425_07083_0000.E1
AT1_TOA_1PURAL19921122_153406_00000004007_00425_07083_0000.E1
AT1_AR_2PURAL19921123_062930_00000004007_00434_07092_0000.E1
AT1_AST_BPSRAL19921123_062930_00000004007_00434_07092_0000.E1
AT1_MET_2PSRAL19921123_062930_00000004007_00434_07092_0000.E1
AT1_NR_2PURAL19921123_062930_00000004007_00434_07092_0000.E1
AT1_TOA_1PURAL19921123_062930_00000004007_00434_07092_0000.E1
AT1_AR_2PURAL19921124_055831_00000004007_00448_07106_0000.E1
AT1_AST_BPSRAL19921124_055831_00000004007_00448_07106_0000.E1
AT1_MET_2PSRAL19921124_055831_00000004007_00448_07106_0000.E1
AT1_NR_2PURAL19921124_055831_00000004007_00448_07106_0000.E1
AT1_TOA_1PURAL19921124_055831_00000004007_00448_07106_0000.E1
AT1_AR_2PURAL19921124_093647_00000004007_00450_07108_0000.E1
AT1_AST_BPSRAL19921124_093647_00000004007_00450_07108_0000.E1
AT1_MET_2PSRAL19921124_093647_00000004007_00450_07108_0000.E1
AT1_NR_2PURAL19921124_093647_00000004007_00450_07108_0000.E1
AT1_TOA_1PURAL19921124_093647_00000004007_00450_07108_0000.E1
AT1_AR_2PURAL19921124_111630_00000004007_00451_07109_0000.E1
AT1_AST_BPSRAL19921124_111630_00000004007_00451_07109_0000.E1
AT1_MET_2PSRAL19921124_111630_00000004007_00451_07109_0000.E1
AT1_NR_2PURAL19921124_111630_00000004007_00451_07109_0000.E1
AT1_TOA_1PURAL19921124_111630_00000004007_00451_07109_0000.E1
AT1_AR_2PURAL19921125_034430_00000004007_00461_07119_0000.E1
AT1_AST_BPSRAL19921125_034430_00000004007_00461_07119_0000.E1
AT1_MET_2PSRAL19921125_034430_00000004007_00461_07119_0000.E1
AT1_NR_2PURAL19921125_034430_00000004007_00461_07119_0000.E1
AT1_TOA_1PURAL19921125_034430_00000004007_00461_07119_0000.E1
AT1_AR_2PURAL19921125_052728_00000004007_00462_07120_0000.E1
AT1_AST_BPSRAL19921125_052728_00000004007_00462_07120_0000.E1
AT1_MET_2PSRAL19921125_052728_00000004007_00462_07120_0000.E1
AT1_NR_2PURAL19921125_052728_00000004007_00462_07120_0000.E1
AT1_TOA_1PURAL19921125_052728_00000004007_00462_07120_0000.E1
AT1_AR_2PURAL19921125_185730_00000004007_00470_07128_0000.E1
AT1_AST_BPSRAL19921125_185730_00000004007_00470_07128_0000.E1
AT1_MET_2PSRAL19921125_185730_00000004007_00470_07128_0000.E1
AT1_NR_2PURAL19921125_185730_00000004007_00470_07128_0000.E1
AT1_TOA_1PURAL19921125_185730_00000004007_00470_07128_0000.E1
AT1_AR_2PURAL19921125_221639_00000004007_00472_07130_0000.E1
AT1_AST_BPSRAL19921125_221639_00000004007_00472_07130_0000.E1
AT1_MET_2PSRAL19921125_221639_00000004007_00472_07130_0000.E1
AT1_NR_2PURAL19921125_221639_00000004007_00472_07130_0000.E1
AT1_TOA_1PURAL19921125_221639_00000004007_00472_07130_0000.E1
AT1_AST_BPSRAL19921126_133102_00000004007_00481_07139_0000.E1
AT1_NR_2PURAL19921126_133102_00000004007_00481_07139_0000.E1
AT1_TOA_1PURAL19921126_133102_00000004007_00481_07139_0000.E1
AT1_AR_2PURAL19921127_143805_00000004007_00496_07154_0000.E1
AT1_AST_BPSRAL19921127_143805_00000004007_00496_07154_0000.E1
AT1_MET_2PSRAL19921127_143805_00000004007_00496_07154_0000.E1



Products affected by invalid last longitude values
AT1_NR_2PURAL19921127_143805_000000004007_00496_07154_0000.E1
AT1_TOA_1PURAL19921127_143805_000000004007_00496_07154_0000.E1
AT1_AR_2PURAL19921127_211357_000000004007_00500_07158_0000.E1
AT1_AST_BPSRAL19921127_211357_000000004007_00500_07158_0000.E1
AT1_MET_2PSRAL19921127_211357_000000004007_00500_07158_0000.E1
AT1_NR_2PURAL19921127_211357_000000004007_00500_07158_0000.E1
AT1_TOA_1PURAL19921127_211357_000000004007_00500_07158_0000.E1
AT1_AR_2PURAL19921129_064046_000000004008_00019_07178_0000.E1
AT1_AST_BPSRAL19921129_064046_000000004008_00019_07178_0000.E1
AT1_MET_2PSRAL19921129_064046_000000004008_00019_07178_0000.E1
AT1_NR_2PURAL19921129_064046_000000004008_00019_07178_0000.E1
AT1_TOA_1PURAL19921129_064046_000000004008_00019_07178_0000.E1
AT1_AR_2PURAL19921129_101938_000000004008_00021_07180_0000.E1
AT1_AST_BPSRAL19921129_101938_000000004008_00021_07180_0000.E1
AT1_MET_2PSRAL19921129_101938_000000004008_00021_07180_0000.E1
AT1_NR_2PURAL19921129_101938_000000004008_00021_07180_0000.E1
AT1_TOA_1PURAL19921129_101938_000000004008_00021_07180_0000.E1
AT1_AR_2PURAL19921129_201128_000000004008_00027_07186_0000.E1
AT1_AST_BPSRAL19921129_201128_000000004008_00027_07186_0000.E1
AT1_MET_2PSRAL19921129_201128_000000004008_00027_07186_0000.E1
AT1_NR_2PURAL19921129_201128_000000004008_00027_07186_0000.E1
AT1_TOA_1PURAL19921129_201128_000000004008_00027_07186_0000.E1
AT1_AR_2PURAL19921130_010714_000000004008_00030_07189_0000.E1
AT1_AST_BPSRAL19921130_010714_000000004008_00030_07189_0000.E1
AT1_MET_2PSRAL19921130_010714_000000004008_00030_07189_0000.E1
AT1_NR_2PURAL19921130_010714_000000004008_00030_07189_0000.E1
AT1_TOA_1PURAL19921130_010714_000000004008_00030_07189_0000.E1
AT1_AR_2PURAL19921130_024745_000000004008_00031_07190_0000.E1
AT1_AST_BPSRAL19921130_024745_000000004008_00031_07190_0000.E1
AT1_MET_2PSRAL19921130_024745_000000004008_00031_07190_0000.E1
AT1_NR_2PURAL19921130_024745_000000004008_00031_07190_0000.E1
AT1_TOA_1PURAL19921130_024745_000000004008_00031_07190_0000.E1
AT1_AR_2PURAL19921130_060947_000000004008_00033_07192_0000.E1
AT1_AST_BPSRAL19921130_060947_000000004008_00033_07192_0000.E1
AT1_MET_2PSRAL19921130_060947_000000004008_00033_07192_0000.E1
AT1_NR_2PURAL19921130_060947_000000004008_00033_07192_0000.E1
AT1_TOA_1PURAL19921130_060947_000000004008_00033_07192_0000.E1
AT1_AR_2PURAL19921208_081837_000000004008_00149_07308_0000.E1
AT1_AST_BPSRAL19921208_081837_000000004008_00149_07308_0000.E1
AT1_MET_2PSRAL19921208_081837_000000004008_00149_07308_0000.E1
AT1_NR_2PURAL19921208_081837_000000004008_00149_07308_0000.E1
AT1_TOA_1PURAL19921208_081837_000000004008_00149_07308_0000.E1
AT1_AR_2PURAL19921220_035829_000000004008_00318_07477_0000.E1
AT1_AST_BPSRAL19921220_035829_000000004008_00318_07477_0000.E1
AT1_MET_2PSRAL19921220_035829_000000004008_00318_07477_0000.E1
AT1_NR_2PURAL19921220_035829_000000004008_00318_07477_0000.E1
AT1_TOA_1PURAL19921220_035829_000000004008_00318_07477_0000.E1
AT1_AR_2PURAL19921231_013315_000000004008_00474_07633_0000.E1
AT1_AST_BPSRAL19921231_013315_000000004008_00474_07633_0000.E1
AT1_MET_2PSRAL19921231_013315_000000004008_00474_07633_0000.E1
AT1_NR_2PURAL19921231_013315_000000004008_00474_07633_0000.E1



Products affected by invalid last longitude values
AT1_TOA_1PURAL19921231_013315_000000004008_00474_07633_0000.E1
AT1_AR_2PURAL19930113_231617_000000004009_00172_07832_0000.E1
AT1_AST_BPSRAL19930113_231617_000000004009_00172_07832_0000.E1
AT1_MET_2PSRAL19930113_231617_000000004009_00172_07832_0000.E1
AT1_NR_2PURAL19930113_231617_000000004009_00172_07832_0000.E1
AT1_TOA_1PURAL19930113_231617_000000004009_00172_07832_0000.E1
AT1_AR_2PURAL19930118_064938_000000004009_00234_07894_0000.E1
AT1_AST_BPSRAL19930118_064938_000000004009_00234_07894_0000.E1
AT1_MET_2PSRAL19930118_064938_000000004009_00234_07894_0000.E1
AT1_NR_2PURAL19930118_064938_000000004009_00234_07894_0000.E1
AT1_TOA_1PURAL19930118_064938_000000004009_00234_07894_0000.E1
AT1_AR_2PURAL19930216_015623_000000004010_00145_08306_0000.E1
AT1_AST_BPSRAL19930216_015623_000000004010_00145_08306_0000.E1
AT1_MET_2PSRAL19930216_015623_000000004010_00145_08306_0000.E1
AT1_NR_2PURAL19930216_015623_000000004010_00145_08306_0000.E1
AT1_TOA_1PURAL19930216_015623_000000004010_00145_08306_0000.E1
AT1_AR_2PURAL19930216_153121_000000004010_00153_08314_0000.E1
AT1_AST_BPSRAL19930216_153121_000000004010_00153_08314_0000.E1
AT1_MET_2PSRAL19930216_153121_000000004010_00153_08314_0000.E1
AT1_NR_2PURAL19930216_153121_000000004010_00153_08314_0000.E1
AT1_TOA_1PURAL19930216_153121_000000004010_00153_08314_0000.E1
AT1_AST_BPSRAL19930216_184903_000000004010_00155_08316_0000.E1
AT1_NR_2PURAL19930216_184903_000000004010_00155_08316_0000.E1
AT1_TOA_1PURAL19930216_184903_000000004010_00155_08316_0000.E1
AT1_AR_2PURAL19930303_092521_000000004010_00364_08525_0000.E1
AT1_AST_BPSRAL19930303_092521_000000004010_00364_08525_0000.E1
AT1_MET_2PSRAL19930303_092521_000000004010_00364_08525_0000.E1
AT1_NR_2PURAL19930303_092521_000000004010_00364_08525_0000.E1
AT1_TOA_1PURAL19930303_092521_000000004010_00364_08525_0000.E1
AT1_AR_2PURAL19930320_170408_000000004011_00111_08773_0000.E1
AT1_AST_BPSRAL19930320_170408_000000004011_00111_08773_0000.E1
AT1_MET_2PSRAL19930320_170408_000000004011_00111_08773_0000.E1
AT1_NR_2PURAL19930320_170408_000000004011_00111_08773_0000.E1
AT1_TOA_1PURAL19930320_170408_000000004011_00111_08773_0000.E1
AT1_AR_2PURAL19930418_013856_000000004012_00016_09179_0000.E1
AT1_AST_BPSRAL19930418_013856_000000004012_00016_09179_0000.E1
AT1_MET_2PSRAL19930418_013856_000000004012_00016_09179_0000.E1
AT1_NR_2PURAL19930418_013856_000000004012_00016_09179_0000.E1
AT1_TOA_1PURAL19930418_013856_000000004012_00016_09179_0000.E1
AT1_AR_2PURAL19930418_180457_000000004012_00026_09189_0000.E1
AT1_AST_BPSRAL19930418_180457_000000004012_00026_09189_0000.E1
AT1_MET_2PSRAL19930418_180457_000000004012_00026_09189_0000.E1
AT1_NR_2PURAL19930418_180457_000000004012_00026_09189_0000.E1
AT1_TOA_1PURAL19930418_180457_000000004012_00026_09189_0000.E1
AT1_AR_2PURAL19930507_130557_000000004012_00295_09458_0000.E1
AT1_AST_BPSRAL19930507_130557_000000004012_00295_09458_0000.E1
AT1_MET_2PSRAL19930507_130557_000000004012_00295_09458_0000.E1
AT1_NR_2PURAL19930507_130557_000000004012_00295_09458_0000.E1
AT1_TOA_1PURAL19930507_130557_000000004012_00295_09458_0000.E1
AT1_AR_2PURAL19930508_162428_000000004012_00311_09474_0000.E1
AT1_AST_BPSRAL19930508_162428_000000004012_00311_09474_0000.E1



Products affected by invalid last longitude values
AT1_MET_2PSRAL19930508_162428_000000004012_00311_09474_0000.E1
AT1_NR_2PURAL19930508_162428_000000004012_00311_09474_0000.E1
AT1_TOA_1PURAL19930508_162428_000000004012_00311_09474_0000.E1
AT1_AR_2PURAL19930514_044017_000000004012_00390_09553_0000.E1
AT1_AST_BPSRAL19930514_044017_000000004012_00390_09553_0000.E1
AT1_MET_2PSRAL19930514_044017_000000004012_00390_09553_0000.E1
AT1_NR_2PURAL19930514_044017_000000004012_00390_09553_0000.E1
AT1_TOA_1PURAL19930514_044017_000000004012_00390_09553_0000.E1
AT1_AST_BPSRAL19930521_094231_000000004012_00493_09656_0000.E1
AT1_NR_2PURAL19930521_094231_000000004012_00493_09656_0000.E1
AT1_TOA_1PURAL19930521_094231_000000004012_00493_09656_0000.E1
AT1_AR_2PURAL19930525_053846_000000004013_00047_09711_0000.E1
AT1_AST_BPSRAL19930525_053846_000000004013_00047_09711_0000.E1
AT1_MET_2PSRAL19930525_053846_000000004013_00047_09711_0000.E1
AT1_NR_2PURAL19930525_053846_000000004013_00047_09711_0000.E1
AT1_TOA_1PURAL19930525_053846_000000004013_00047_09711_0000.E1
AT1_AR_2PURAL19930525_091634_000000004013_00049_09713_0000.E1
AT1_AST_BPSRAL19930525_091634_000000004013_00049_09713_0000.E1
AT1_MET_2PSRAL19930525_091634_000000004013_00049_09713_0000.E1
AT1_NR_2PURAL19930525_091634_000000004013_00049_09713_0000.E1
AT1_TOA_1PURAL19930525_091634_000000004013_00049_09713_0000.E1
AT1_AR_2PURAL19930526_084445_000000004013_00063_09727_0000.E1
AT1_AST_BPSRAL19930526_084445_000000004013_00063_09727_0000.E1
AT1_MET_2PSRAL19930526_084445_000000004013_00063_09727_0000.E1
AT1_NR_2PURAL19930526_084445_000000004013_00063_09727_0000.E1
AT1_TOA_1PURAL19930526_084445_000000004013_00063_09727_0000.E1
AT1_AR_2PURAL19930531_192013_000000004013_00141_09805_0000.E1
AT1_AST_BPSRAL19930531_192013_000000004013_00141_09805_0000.E1
AT1_MET_2PSRAL19930531_192013_000000004013_00141_09805_0000.E1
AT1_NR_2PURAL19930531_192013_000000004013_00141_09805_0000.E1
AT1_TOA_1PURAL19930531_192013_000000004013_00141_09805_0000.E1
AT1_AR_2PURAL19930531_222940_000000004013_00143_09807_0000.E1
AT1_AST_BPSRAL19930531_222940_000000004013_00143_09807_0000.E1
AT1_MET_2PSRAL19930531_222940_000000004013_00143_09807_0000.E1
AT1_NR_2PURAL19930531_222940_000000004013_00143_09807_0000.E1
AT1_TOA_1PURAL19930531_222940_000000004013_00143_09807_0000.E1
AT1_AR_2PURAL19930603_174631_000000004013_00183_09847_0000.E1
AT1_AST_BPSRAL19930603_174631_000000004013_00183_09847_0000.E1
AT1_MET_2PSRAL19930603_174631_000000004013_00183_09847_0000.E1
AT1_NR_2PURAL19930603_174631_000000004013_00183_09847_0000.E1
AT1_TOA_1PURAL19930603_174631_000000004013_00183_09847_0000.E1
AT1_AR_2PURAL19930604_034134_000000004013_00189_09853_0000.E1
AT1_AST_BPSRAL19930604_034134_000000004013_00189_09853_0000.E1
AT1_MET_2PSRAL19930604_034134_000000004013_00189_09853_0000.E1
AT1_NR_2PURAL19930604_034134_000000004013_00189_09853_0000.E1
AT1_TOA_1PURAL19930604_034134_000000004013_00189_09853_0000.E1
AT1_AR_2PURAL19930606_143515_000000004013_00224_09888_0000.E1
AT1_AST_BPSRAL19930606_143515_000000004013_00224_09888_0000.E1
AT1_MET_2PSRAL19930606_143515_000000004013_00224_09888_0000.E1
AT1_NR_2PURAL19930606_143515_000000004013_00224_09888_0000.E1
AT1_TOA_1PURAL19930606_143515_000000004013_00224_09888_0000.E1



Products affected by invalid last longitude values
AT1_AR_2PURAL19930606_211111_000000004013_00228_09892_0000.E1
AT1_AST_BPSRAL19930606_211111_000000004013_00228_09892_0000.E1
AT1_MET_2PSRAL19930606_211111_000000004013_00228_09892_0000.E1
AT1_NR_2PURAL19930606_211111_000000004013_00228_09892_0000.E1
AT1_TOA_1PURAL19930606_211111_000000004013_00228_09892_0000.E1
AT1_AST_BPSRAL19930607_002003_000000004013_00230_09894_0000.E1
AT1_NR_2PURAL19930607_002003_000000004013_00230_09894_0000.E1
AT1_TOA_1PURAL19930607_002003_000000004013_00230_09894_0000.E1
AT1_AR_2PURAL19930607_190020_000000004013_00241_09905_0000.E1
AT1_AST_BPSRAL19930607_190020_000000004013_00241_09905_0000.E1
AT1_MET_2PSRAL19930607_190020_000000004013_00241_09905_0000.E1
AT1_NR_2PURAL19930607_190020_000000004013_00241_09905_0000.E1
AT1_TOA_1PURAL19930607_190020_000000004013_00241_09905_0000.E1
AT1_AR_2PURAL19930609_080355_000000004013_00263_09927_0000.E1
AT1_AST_BPSRAL19930609_080355_000000004013_00263_09927_0000.E1
AT1_MET_2PSRAL19930609_080355_000000004013_00263_09927_0000.E1
AT1_NR_2PURAL19930609_080355_000000004013_00263_09927_0000.E1
AT1_TOA_1PURAL19930609_080355_000000004013_00263_09927_0000.E1
AT1_AR_2PURAL19930609_094525_000000004013_00264_09928_0000.E1
AT1_AST_BPSRAL19930609_094525_000000004013_00264_09928_0000.E1
AT1_MET_2PSRAL19930609_094525_000000004013_00264_09928_0000.E1
AT1_NR_2PURAL19930609_094525_000000004013_00264_09928_0000.E1
AT1_TOA_1PURAL19930609_094525_000000004013_00264_09928_0000.E1
AT1_AR_2PURAL19930609_161859_000000004013_00268_09932_0000.E1
AT1_AST_BPSRAL19930609_161859_000000004013_00268_09932_0000.E1
AT1_MET_2PSRAL19930609_161859_000000004013_00268_09932_0000.E1
AT1_NR_2PURAL19930609_161859_000000004013_00268_09932_0000.E1
AT1_TOA_1PURAL19930609_161859_000000004013_00268_09932_0000.E1
AT1_AR_2PURAL19930629_053846_000000004014_00047_10212_0000.E1
AT1_AST_BPSRAL19930629_053846_000000004014_00047_10212_0000.E1
AT1_MET_2PSRAL19930629_053846_000000004014_00047_10212_0000.E1
AT1_NR_2PURAL19930629_053846_000000004014_00047_10212_0000.E1
AT1_TOA_1PURAL19930629_053846_000000004014_00047_10212_0000.E1
AT1_AST_BPSRAL19930629_073430_000000004014_00048_10213_0000.E1
AT1_NR_2PURAL19930629_073430_000000004014_00048_10213_0000.E1
AT1_TOA_1PURAL19930629_073430_000000004014_00048_10213_0000.E1
AT1_AR_2PURAL19930707_012440_000000004014_00159_10324_0000.E1
AT1_AST_BPSRAL19930707_012440_000000004014_00159_10324_0000.E1
AT1_MET_2PSRAL19930707_012440_000000004014_00159_10324_0000.E1
AT1_NR_2PURAL19930707_012440_000000004014_00159_10324_0000.E1
AT1_TOA_1PURAL19930707_012440_000000004014_00159_10324_0000.E1
AT1_AR_2PURAL19930715_053601_000000004014_00276_10441_0000.E1
AT1_AST_BPSRAL19930715_053601_000000004014_00276_10441_0000.E1
AT1_MET_2PSRAL19930715_053601_000000004014_00276_10441_0000.E1
AT1_NR_2PURAL19930715_053601_000000004014_00276_10441_0000.E1
AT1_TOA_1PURAL19930715_053601_000000004014_00276_10441_0000.E1
AT1_AR_2PURAL19930820_130614_000000004015_00295_10961_0000.E1
AT1_AST_BPSRAL19930820_130614_000000004015_00295_10961_0000.E1
AT1_MET_2PSRAL19930820_130614_000000004015_00295_10961_0000.E1
AT1_NR_2PURAL19930820_130614_000000004015_00295_10961_0000.E1
AT1_TOA_1PURAL19930820_130614_000000004015_00295_10961_0000.E1



Products affected by invalid last longitude values
AT1_AR_2PURAL19930905_180510_00000004016_00026_11193_0000.E1
AT1_AST_BPSRAL19930905_180510_00000004016_00026_11193_0000.E1
AT1_MET_2PSRAL19930905_180510_00000004016_00026_11193_0000.E1
AT1_NR_2PURAL19930905_180510_00000004016_00026_11193_0000.E1
AT1_TOA_1PURAL19930905_180510_00000004016_00026_11193_0000.E1
AT1_AR_2PURAL19930908_014451_00000004016_00059_11226_0000.E1
AT1_AST_BPSRAL19930908_014451_00000004016_00059_11226_0000.E1
AT1_MET_2PSRAL19930908_014451_00000004016_00059_11226_0000.E1
AT1_NR_2PURAL19930908_014451_00000004016_00059_11226_0000.E1
AT1_TOA_1PURAL19930908_014451_00000004016_00059_11226_0000.E1
AT1_AR_2PURAL19930909_011315_00000004016_00073_11240_0000.E1
AT1_AST_BPSRAL19930909_011315_00000004016_00073_11240_0000.E1
AT1_MET_2PSRAL19930909_011315_00000004016_00073_11240_0000.E1
AT1_NR_2PURAL19930909_011315_00000004016_00073_11240_0000.E1
AT1_TOA_1PURAL19930909_011315_00000004016_00073_11240_0000.E1
AT1_AR_2PURAL19930909_061533_00000004016_00076_11243_0000.E1
AT1_AST_BPSRAL19930909_061533_00000004016_00076_11243_0000.E1
AT1_MET_2PSRAL19930909_061533_00000004016_00076_11243_0000.E1
AT1_NR_2PURAL19930909_061533_00000004016_00076_11243_0000.E1
AT1_TOA_1PURAL19930909_061533_00000004016_00076_11243_0000.E1
AT1_AR_2PURAL19930909_095413_00000004016_00078_11245_0000.E1
AT1_AST_BPSRAL19930909_095413_00000004016_00078_11245_0000.E1
AT1_MET_2PSRAL19930909_095413_00000004016_00078_11245_0000.E1
AT1_NR_2PURAL19930909_095413_00000004016_00078_11245_0000.E1
AT1_TOA_1PURAL19930909_095413_00000004016_00078_11245_0000.E1
AT1_AR_2PURAL19931010_044018_00000004017_00018_11686_0000.E1
AT1_AST_BPSRAL19931010_044018_00000004017_00018_11686_0000.E1
AT1_MET_2PSRAL19931010_044018_00000004017_00018_11686_0000.E1
AT1_NR_2PURAL19931010_044018_00000004017_00018_11686_0000.E1
AT1_TOA_1PURAL19931010_044018_00000004017_00018_11686_0000.E1
AT1_AR_2PURAL19931010_064043_00000004017_00019_11687_0000.E1
AT1_AST_BPSRAL19931010_064043_00000004017_00019_11687_0000.E1
AT1_MET_2PSRAL19931010_064043_00000004017_00019_11687_0000.E1
AT1_NR_2PURAL19931010_064043_00000004017_00019_11687_0000.E1
AT1_TOA_1PURAL19931010_064043_00000004017_00019_11687_0000.E1
AT1_AR_2PURAL19931012_021626_00000004017_00045_11713_0000.E1
AT1_AST_BPSRAL19931012_021626_00000004017_00045_11713_0000.E1
AT1_MET_2PSRAL19931012_021626_00000004017_00045_11713_0000.E1
AT1_NR_2PURAL19931012_021626_00000004017_00045_11713_0000.E1
AT1_TOA_1PURAL19931012_021626_00000004017_00045_11713_0000.E1
AT1_AR_2PURAL19931012_123519_00000004017_00051_11719_0000.E1
AT1_AST_BPSRAL19931012_123519_00000004017_00051_11719_0000.E1
AT1_MET_2PSRAL19931012_123519_00000004017_00051_11719_0000.E1
AT1_NR_2PURAL19931012_123519_00000004017_00051_11719_0000.E1
AT1_TOA_1PURAL19931012_123519_00000004017_00051_11719_0000.E1
AT1_AR_2PURAL19931012_235740_00000004017_00058_11726_0000.E1
AT1_AST_BPSRAL19931012_235740_00000004017_00058_11726_0000.E1
AT1_MET_2PSRAL19931012_235740_00000004017_00058_11726_0000.E1
AT1_NR_2PURAL19931012_235740_00000004017_00058_11726_0000.E1
AT1_TOA_1PURAL19931012_235740_00000004017_00058_11726_0000.E1
AT1_AR_2PURAL19931013_084451_00000004017_00063_11731_0000.E1



Products affected by invalid last longitude values
AT1_AST_BPSRAL19931013_084451_000000004017_00063_11731_0000.E1
AT1_MET_2PSRAL19931013_084451_000000004017_00063_11731_0000.E1
AT1_NR_2PURAL19931013_084451_000000004017_00063_11731_0000.E1
AT1_TOA_1PURAL19931013_084451_000000004017_00063_11731_0000.E1
AT1_AR_2PURAL19931118_162728_000000004018_00082_12251_0000.E1
AT1_AST_BPSRAL19931118_162728_000000004018_00082_12251_0000.E1
AT1_MET_2PSRAL19931118_162728_000000004018_00082_12251_0000.E1
AT1_NR_2PURAL19931118_162728_000000004018_00082_12251_0000.E1
AT1_TOA_1PURAL19931118_162728_000000004018_00082_12251_0000.E1
AT1_AR_2PURAL19940312_022103_000000005027_00031_13876_0000.E1
AT1_AST_BPSRAL19940312_022103_000000005027_00031_13876_0000.E1
AT1_MET_2PSRAL19940312_022103_000000005027_00031_13876_0000.E1
AT1_NR_2PURAL19940312_022103_000000005027_00031_13876_0000.E1
AT1_TOA_1PURAL19940312_022103_000000005027_00031_13876_0000.E1
AT1_AR_2PURAL19940317_011402_000000005029_00016_13947_0000.E1
AT1_AST_BPSRAL19940317_011402_000000005029_00016_13947_0000.E1
AT1_MET_2PSRAL19940317_011402_000000005029_00016_13947_0000.E1
AT1_NR_2PURAL19940317_011402_000000005029_00016_13947_0000.E1
AT1_TOA_1PURAL19940317_011402_000000005029_00016_13947_0000.E1
AT1_AR_2PURAL19940324_191213_000000005031_00041_14058_0000.E1
AT1_AST_BPSRAL19940324_191213_000000005031_00041_14058_0000.E1
AT1_MET_2PSRAL19940324_191213_000000005031_00041_14058_0000.E1
AT1_NR_2PURAL19940324_191213_000000005031_00041_14058_0000.E1
AT1_TOA_1PURAL19940324_191213_000000005031_00041_14058_0000.E1
AT1_AR_2PURAL19940330_040017_000000005033_00032_14135_0000.E1
AT1_AST_BPSRAL19940330_040017_000000005033_00032_14135_0000.E1
AT1_MET_2PSRAL19940330_040017_000000005033_00032_14135_0000.E1
AT1_NR_2PURAL19940330_040017_000000005033_00032_14135_0000.E1
AT1_TOA_1PURAL19940330_040017_000000005033_00032_14135_0000.E1
AT1_AR_2PURAL19940408_092051_000000005036_00035_14267_0000.E1
AT1_AST_BPSRAL19940408_092051_000000005036_00035_14267_0000.E1
AT1_MET_2PSRAL19940408_092051_000000005036_00035_14267_0000.E1
AT1_NR_2PURAL19940408_092051_000000005036_00035_14267_0000.E1
AT1_TOA_1PURAL19940408_092051_000000005036_00035_14267_0000.E1
AT1_AR_2PURAL19940410_011402_000000005037_00016_14291_0000.E1
AT1_AST_BPSRAL19940410_011402_000000005037_00016_14291_0000.E1
AT1_MET_2PSRAL19940410_011402_000000005037_00016_14291_0000.E1
AT1_NR_2PURAL19940410_011402_000000005037_00016_14291_0000.E1
AT1_TOA_1PURAL19940410_011402_000000005037_00016_14291_0000.E1
AT1_AR_2PURAL19940627_003055_000000006999_99999_15410_0000.E1
AT1_AST_BPSRAL19940627_003055_000000006999_99999_15410_0000.E1
AT1_MET_2PSRAL19940627_003055_000000006999_99999_15410_0000.E1
AT1_NR_2PURAL19940627_003055_000000006999_99999_15410_0000.E1
AT1_TOA_1PURAL19940627_003055_000000006999_99999_15410_0000.E1
AT1_AR_2PURAL19940705_221950_000000006999_99999_15538_0000.E1
AT1_AST_BPSRAL19940705_221950_000000006999_99999_15538_0000.E1
AT1_MET_2PSRAL19940705_221950_000000006999_99999_15538_0000.E1
AT1_NR_2PURAL19940705_221950_000000006999_99999_15538_0000.E1
AT1_TOA_1PURAL19940705_221950_000000006999_99999_15538_0000.E1
AT1_AST_BPSRAL19940713_131248_000000006999_99999_15647_0000.E1
AT1_NR_2PURAL19940713_131248_000000006999_99999_15647_0000.E1



Products affected by invalid last longitude values
AT1_TOA_1PURAL19940713_131248_00000006999_99999_15647_0000.E1
AT1_AR_2PURAL19940714_223008_00000006999_99999_15667_0000.E1
AT1_AST_BPSRAL19940714_223008_00000006999_99999_15667_0000.E1
AT1_MET_2PSRAL19940714_223008_00000006999_99999_15667_0000.E1
AT1_NR_2PURAL19940714_223008_00000006999_99999_15667_0000.E1
AT1_TOA_1PURAL19940714_223008_00000006999_99999_15667_0000.E1
AT1_AR_2PURAL19940819_212920_00000006999_99999_16183_0000.E1
AT1_AST_BPSRAL19940819_212920_00000006999_99999_16183_0000.E1
AT1_MET_2PSRAL19940819_212920_00000006999_99999_16183_0000.E1
AT1_NR_2PURAL19940819_212920_00000006999_99999_16183_0000.E1
AT1_TOA_1PURAL19940819_212920_00000006999_99999_16183_0000.E1
AT1_AR_2PURAL19940819_225710_00000006999_99999_16184_0000.E1
AT1_AST_BPSRAL19940819_225710_00000006999_99999_16184_0000.E1
AT1_MET_2PSRAL19940819_225710_00000006999_99999_16184_0000.E1
AT1_NR_2PURAL19940819_225710_00000006999_99999_16184_0000.E1
AT1_TOA_1PURAL19940819_225710_00000006999_99999_16184_0000.E1
AT1_AST_BPSRAL19940828_174954_00000006999_99999_16310_0000.E1
AT1_NR_2PURAL19940828_174954_00000006999_99999_16310_0000.E1
AT1_TOA_1PURAL19940828_174954_00000006999_99999_16310_0000.E1
AT1_AR_2PURAL19940928_123302_00000007001_02362_16752_0000.E1
AT1_AST_BPSRAL19940928_123302_00000007001_02362_16752_0000.E1
AT1_MET_2PSRAL19940928_123302_00000007001_02362_16752_0000.E1
AT1_NR_2PURAL19940928_123302_00000007001_02362_16752_0000.E1
AT1_TOA_1PURAL19940928_123302_00000007001_02362_16752_0000.E1
AT1_AR_2PURAL19940929_035821_00000007001_02371_16761_0000.E1
AT1_AST_BPSRAL19940929_035821_00000007001_02371_16761_0000.E1
AT1_MET_2PSRAL19940929_035821_00000007001_02371_16761_0000.E1
AT1_NR_2PURAL19940929_035821_00000007001_02371_16761_0000.E1
AT1_TOA_1PURAL19940929_035821_00000007001_02371_16761_0000.E1
AT1_AST_BPSRAL19941202_044530_00000007002_00879_17680_0000.E1
AT1_NR_2PURAL19941202_044530_00000007002_00879_17680_0000.E1
AT1_TOA_1PURAL19941202_044530_00000007002_00879_17680_0000.E1
AT1_AR_2PURAL19950121_021151_00000007002_01595_18396_0000.E1
AT1_AST_BPSRAL19950121_021151_00000007002_01595_18396_0000.E1
AT1_MET_2PSRAL19950121_021151_00000007002_01595_18396_0000.E1
AT1_NR_2PURAL19950121_021151_00000007002_01595_18396_0000.E1
AT1_TOA_1PURAL19950121_021151_00000007002_01595_18396_0000.E1
AT1_AR_2PURAL19950128_114424_00000007002_01701_18502_0000.E1
AT1_AST_BPSRAL19950128_114424_00000007002_01701_18502_0000.E1
AT1_MET_2PSRAL19950128_114424_00000007002_01701_18502_0000.E1
AT1_NR_2PURAL19950128_114424_00000007002_01701_18502_0000.E1
AT1_TOA_1PURAL19950128_114424_00000007002_01701_18502_0000.E1
AT1_AR_2PURAL19950128_132212_00000007002_01702_18503_0000.E1
AT1_AST_BPSRAL19950128_132212_00000007002_01702_18503_0000.E1
AT1_MET_2PSRAL19950128_132212_00000007002_01702_18503_0000.E1
AT1_NR_2PURAL19950128_132212_00000007002_01702_18503_0000.E1
AT1_TOA_1PURAL19950128_132212_00000007002_01702_18503_0000.E1
AT1_AR_2PURAL19950128_163742_00000007002_01704_18505_0000.E1
AT1_AST_BPSRAL19950128_163742_00000007002_01704_18505_0000.E1
AT1_MET_2PSRAL19950128_163742_00000007002_01704_18505_0000.E1
AT1_NR_2PURAL19950128_163742_00000007002_01704_18505_0000.E1



Products affected by invalid last longitude values
AT1_TOA_1PURAL19950128_163742_000000007002_01704_18505_0000.E1
AT1_AR_2PURAL19950128_195538_000000007002_01706_18507_0000.E1
AT1_AST_BPSRAL19950128_195538_000000007002_01706_18507_0000.E1
AT1_MET_2PSRAL19950128_195538_000000007002_01706_18507_0000.E1
AT1_NR_2PURAL19950128_195538_000000007002_01706_18507_0000.E1
AT1_TOA_1PURAL19950128_195538_000000007002_01706_18507_0000.E1
AT1_AR_2PURAL19950128_213505_000000007002_01707_18508_0000.E1
AT1_AST_BPSRAL19950128_213505_000000007002_01707_18508_0000.E1
AT1_MET_2PSRAL19950128_213505_000000007002_01707_18508_0000.E1
AT1_NR_2PURAL19950128_213505_000000007002_01707_18508_0000.E1
AT1_TOA_1PURAL19950128_213505_000000007002_01707_18508_0000.E1
AT1_AR_2PURAL19950129_003049_000000007002_01709_18510_0000.E1
AT1_AST_BPSRAL19950129_003049_000000007002_01709_18510_0000.E1
AT1_MET_2PSRAL19950129_003049_000000007002_01709_18510_0000.E1
AT1_NR_2PURAL19950129_003049_000000007002_01709_18510_0000.E1
AT1_TOA_1PURAL19950129_003049_000000007002_01709_18510_0000.E1
AT1_AR_2PURAL19950228_151042_000000007002_02148_18949_0000.E1
AT1_AST_BPSRAL19950228_151042_000000007002_02148_18949_0000.E1
AT1_MET_2PSRAL19950228_151042_000000007002_02148_18949_0000.E1
AT1_NR_2PURAL19950228_151042_000000007002_02148_18949_0000.E1
AT1_TOA_1PURAL19950228_151042_000000007002_02148_18949_0000.E1
AT1_AR_2PURAL19950228_164852_000000007002_02149_18950_0000.E1
AT1_AST_BPSRAL19950228_164852_000000007002_02149_18950_0000.E1
AT1_MET_2PSRAL19950228_164852_000000007002_02149_18950_0000.E1
AT1_NR_2PURAL19950228_164852_000000007002_02149_18950_0000.E1
AT1_TOA_1PURAL19950228_164852_000000007002_02149_18950_0000.E1
AT1_AR_2PURAL19950301_112058_000000007002_02160_18961_0000.E1
AT1_AST_BPSRAL19950301_112058_000000007002_02160_18961_0000.E1
AT1_MET_2PSRAL19950301_112058_000000007002_02160_18961_0000.E1
AT1_NR_2PURAL19950301_112058_000000007002_02160_18961_0000.E1
AT1_TOA_1PURAL19950301_112058_000000007002_02160_18961_0000.E1
AT1_AR_2PURAL19950302_221633_000000007002_02181_18982_0000.E1
AT1_AST_BPSRAL19950302_221633_000000007002_02181_18982_0000.E1
AT1_MET_2PSRAL19950302_221633_000000007002_02181_18982_0000.E1
AT1_NR_2PURAL19950302_221633_000000007002_02181_18982_0000.E1
AT1_TOA_1PURAL19950302_221633_000000007002_02181_18982_0000.E1
AT1_AR_2PURAL19950304_192638_000000007002_02208_19009_0000.E1
AT1_AST_BPSRAL19950304_192638_000000007002_02208_19009_0000.E1
AT1_MET_2PSRAL19950304_192638_000000007002_02208_19009_0000.E1
AT1_NR_2PURAL19950304_192638_000000007002_02208_19009_0000.E1
AT1_TOA_1PURAL19950304_192638_000000007002_02208_19009_0000.E1
AT1_AR_2PURAL19950305_000131_000000007002_02211_19012_0000.E1
AT1_AST_BPSRAL19950305_000131_000000007002_02211_19012_0000.E1
AT1_MET_2PSRAL19950305_000131_000000007002_02211_19012_0000.E1
AT1_NR_2PURAL19950305_000131_000000007002_02211_19012_0000.E1
AT1_TOA_1PURAL19950305_000131_000000007002_02211_19012_0000.E1
AT1_AR_2PURAL19950305_100333_000000007002_02217_19018_0000.E1
AT1_AST_BPSRAL19950305_100333_000000007002_02217_19018_0000.E1
AT1_MET_2PSRAL19950305_100333_000000007002_02217_19018_0000.E1
AT1_NR_2PURAL19950305_100333_000000007002_02217_19018_0000.E1
AT1_TOA_1PURAL19950305_100333_000000007002_02217_19018_0000.E1



Products affected by invalid last longitude values
AT1_AR_2PURAL19950306_195612_00000007002_02237_19038_0000.E1
AT1_AST_BPSRAL19950306_195612_00000007002_02237_19038_0000.E1
AT1_MET_2PSRAL19950306_195612_00000007002_02237_19038_0000.E1
AT1_NR_2PURAL19950306_195612_00000007002_02237_19038_0000.E1
AT1_TOA_1PURAL19950306_195612_00000007002_02237_19038_0000.E1
AT1_AR_2PURAL19950306_230507_00000007002_02239_19040_0000.E1
AT1_AST_BPSRAL19950306_230507_00000007002_02239_19040_0000.E1
AT1_MET_2PSRAL19950306_230507_00000007002_02239_19040_0000.E1
AT1_NR_2PURAL19950306_230507_00000007002_02239_19040_0000.E1
AT1_TOA_1PURAL19950306_230507_00000007002_02239_19040_0000.E1
AT1_AR_2PURAL19950307_041018_00000007002_02242_19043_0000.E1
AT1_AST_BPSRAL19950307_041018_00000007002_02242_19043_0000.E1
AT1_MET_2PSRAL19950307_041018_00000007002_02242_19043_0000.E1
AT1_NR_2PURAL19950307_041018_00000007002_02242_19043_0000.E1
AT1_TOA_1PURAL19950307_041018_00000007002_02242_19043_0000.E1
AT1_AR_2PURAL19950308_121410_00000007002_02261_19062_0000.E1
AT1_AST_BPSRAL19950308_121410_00000007002_02261_19062_0000.E1
AT1_MET_2PSRAL19950308_121410_00000007002_02261_19062_0000.E1
AT1_NR_2PURAL19950308_121410_00000007002_02261_19062_0000.E1
AT1_TOA_1PURAL19950308_121410_00000007002_02261_19062_0000.E1
AT1_AR_2PURAL19950309_012103_00000007002_02269_19070_0000.E1
AT1_AST_BPSRAL19950309_012103_00000007002_02269_19070_0000.E1
AT1_MET_2PSRAL19950309_012103_00000007002_02269_19070_0000.E1
AT1_NR_2PURAL19950309_012103_00000007002_02269_19070_0000.E1
AT1_TOA_1PURAL19950309_012103_00000007002_02269_19070_0000.E1
AT1_AR_2PURAL19950309_043916_00000007002_02271_19072_0000.E1
AT1_AST_BPSRAL19950309_043916_00000007002_02271_19072_0000.E1
AT1_MET_2PSRAL19950309_043916_00000007002_02271_19072_0000.E1
AT1_NR_2PURAL19950309_043916_00000007002_02271_19072_0000.E1
AT1_TOA_1PURAL19950309_043916_00000007002_02271_19072_0000.E1
AT1_AR_2PURAL19950422_023421_00000008002_00174_19701_0000.E1
AT1_AST_BPSRAL19950422_023421_00000008002_00174_19701_0000.E1
AT1_MET_2PSRAL19950422_023421_00000008002_00174_19701_0000.E1
AT1_NR_2PURAL19950422_023421_00000008002_00174_19701_0000.E1
AT1_TOA_1PURAL19950422_023421_00000008002_00174_19701_0000.E1
AT1_AR_2PURAL19950422_125240_00000008002_00180_19707_0000.E1
AT1_AST_BPSRAL19950422_125240_00000008002_00180_19707_0000.E1
AT1_MET_2PSRAL19950422_125240_00000008002_00180_19707_0000.E1
AT1_NR_2PURAL19950422_125240_00000008002_00180_19707_0000.E1
AT1_TOA_1PURAL19950422_125240_00000008002_00180_19707_0000.E1
AT1_AR_2PURAL19950423_122204_00000008002_00194_19721_0000.E1
AT1_AST_BPSRAL19950423_122204_00000008002_00194_19721_0000.E1
AT1_MET_2PSRAL19950423_122204_00000008002_00194_19721_0000.E1
AT1_NR_2PURAL19950423_122204_00000008002_00194_19721_0000.E1
AT1_TOA_1PURAL19950423_122204_00000008002_00194_19721_0000.E1
AT1_AR_2PURAL19950424_045018_00000008002_00204_19731_0000.E1
AT1_AST_BPSRAL19950424_045018_00000008002_00204_19731_0000.E1
AT1_MET_2PSRAL19950424_045018_00000008002_00204_19731_0000.E1
AT1_NR_2PURAL19950424_045018_00000008002_00204_19731_0000.E1
AT1_TOA_1PURAL19950424_045018_00000008002_00204_19731_0000.E1
AT1_AR_2PURAL19950429_021423_00000008002_00274_19801_0000.E1



Products affected by invalid last longitude values
AT1_AST_BPSRAL19950429_021423_000000008002_00274_19801_0000.E1
AT1_MET_2PSRAL19950429_021423_000000008002_00274_19801_0000.E1
AT1_NR_2PURAL19950429_021423_000000008002_00274_19801_0000.E1
AT1_TOA_1PURAL19950429_021423_000000008002_00274_19801_0000.E1
AT1_AR_2PURAL19950430_201441_000000008002_00299_19826_0000.E1
AT1_AST_BPSRAL19950430_201441_000000008002_00299_19826_0000.E1
AT1_MET_2PSRAL19950430_201441_000000008002_00299_19826_0000.E1
AT1_NR_2PURAL19950430_201441_000000008002_00299_19826_0000.E1
AT1_TOA_1PURAL19950430_201441_000000008002_00299_19826_0000.E1
AT1_AR_2PURAL19950506_015332_000000008002_00374_19901_0000.E1
AT1_AST_BPSRAL19950506_015332_000000008002_00374_19901_0000.E1
AT1_MET_2PSRAL19950506_015332_000000008002_00374_19901_0000.E1
AT1_NR_2PURAL19950506_015332_000000008002_00374_19901_0000.E1
AT1_TOA_1PURAL19950506_015332_000000008002_00374_19901_0000.E1
AT1_AR_2PURAL19950506_033312_000000008002_00375_19902_0000.E1
AT1_AST_BPSRAL19950506_033312_000000008002_00375_19902_0000.E1
AT1_MET_2PSRAL19950506_033312_000000008002_00375_19902_0000.E1
AT1_NR_2PURAL19950506_033312_000000008002_00375_19902_0000.E1
AT1_TOA_1PURAL19950506_033312_000000008002_00375_19902_0000.E1
AT1_AST_BPSRAL19950516_032202_000000008003_00017_20045_0000.E1
AT1_NR_2PURAL19950516_032202_000000008003_00017_20045_0000.E1
AT1_TOA_1PURAL19950516_032202_000000008003_00017_20045_0000.E1
AT1_AR_2PURAL19950516_045941_000000008003_00018_20046_0000.E1
AT1_AST_BPSRAL19950516_045941_000000008003_00018_20046_0000.E1
AT1_MET_2PSRAL19950516_045941_000000008003_00018_20046_0000.E1
AT1_NR_2PURAL19950516_045941_000000008003_00018_20046_0000.E1
AT1_TOA_1PURAL19950516_045941_000000008003_00018_20046_0000.E1
AT1_AR_2PURAL19950613_171329_000000008003_00426_20454_0000.E1
AT1_AST_BPSRAL19950613_171329_000000008003_00426_20454_0000.E1
AT1_MET_2PSRAL19950613_171329_000000008003_00426_20454_0000.E1
AT1_NR_2PURAL19950613_171329_000000008003_00426_20454_0000.E1
AT1_TOA_1PURAL19950613_171329_000000008003_00426_20454_0000.E1
AT1_AR_2PURAL19950619_222323_000000008004_00014_20543_0000.E1
AT1_AST_BPSRAL19950619_222323_000000008004_00014_20543_0000.E1
AT1_MET_2PSRAL19950619_222323_000000008004_00014_20543_0000.E1
AT1_NR_2PURAL19950619_222323_000000008004_00014_20543_0000.E1
AT1_TOA_1PURAL19950619_222323_000000008004_00014_20543_0000.E1
AT1_AR_2PURAL19950622_155135_000000008004_00053_20582_0000.E1
AT1_AST_BPSRAL19950622_155135_000000008004_00053_20582_0000.E1
AT1_MET_2PSRAL19950622_155135_000000008004_00053_20582_0000.E1
AT1_NR_2PURAL19950622_155135_000000008004_00053_20582_0000.E1
AT1_TOA_1PURAL19950622_155135_000000008004_00053_20582_0000.E1
AT1_AR_2PURAL19950707_223231_000000008004_00272_20801_0000.E1
AT1_AST_BPSRAL19950707_223231_000000008004_00272_20801_0000.E1
AT1_MET_2PSRAL19950707_223231_000000008004_00272_20801_0000.E1
AT1_NR_2PURAL19950707_223231_000000008004_00272_20801_0000.E1
AT1_TOA_1PURAL19950707_223231_000000008004_00272_20801_0000.E1
AT1_AR_2PURAL19950708_002621_000000008004_00273_20802_0000.E1
AT1_AST_BPSRAL19950708_002621_000000008004_00273_20802_0000.E1
AT1_MET_2PSRAL19950708_002621_000000008004_00273_20802_0000.E1
AT1_NR_2PURAL19950708_002621_000000008004_00273_20802_0000.E1



Products affected by invalid last longitude values
AT1_TOA_1PURAL19950708_002621_000000008004_00273_20802_0000.E1
AT1_AR_2PURAL19950710_173628_000000008004_00312_20841_0000.E1
AT1_AST_BPSRAL19950710_173628_000000008004_00312_20841_0000.E1
AT1_MET_2PSRAL19950710_173628_000000008004_00312_20841_0000.E1
AT1_NR_2PURAL19950710_173628_000000008004_00312_20841_0000.E1
AT1_TOA_1PURAL19950710_173628_000000008004_00312_20841_0000.E1
AT1_AR_2PURAL19950717_004202_000000008004_00402_20931_0000.E1
AT1_AST_BPSRAL19950717_004202_000000008004_00402_20931_0000.E1
AT1_MET_2PSRAL19950717_004202_000000008004_00402_20931_0000.E1
AT1_NR_2PURAL19950717_004202_000000008004_00402_20931_0000.E1
AT1_TOA_1PURAL19950717_004202_000000008004_00402_20931_0000.E1
AT1_AR_2PURAL19950718_104023_000000008004_00422_20951_0000.E1
AT1_AST_BPSRAL19950718_104023_000000008004_00422_20951_0000.E1
AT1_MET_2PSRAL19950718_104023_000000008004_00422_20951_0000.E1
AT1_NR_2PURAL19950718_104023_000000008004_00422_20951_0000.E1
AT1_TOA_1PURAL19950718_104023_000000008004_00422_20951_0000.E1
AT1_AR_2PURAL19950722_115341_000000008004_00480_21009_0000.E1
AT1_AST_BPSRAL19950722_115341_000000008004_00480_21009_0000.E1
AT1_MET_2PSRAL19950722_115341_000000008004_00480_21009_0000.E1
AT1_NR_2PURAL19950722_115341_000000008004_00480_21009_0000.E1
AT1_TOA_1PURAL19950722_115341_000000008004_00480_21009_0000.E1
AT1_AR_2PURAL19950723_042149_000000008004_00490_21019_0000.E1
AT1_AST_BPSRAL19950723_042149_000000008004_00490_21019_0000.E1
AT1_MET_2PSRAL19950723_042149_000000008004_00490_21019_0000.E1
AT1_NR_2PURAL19950723_042149_000000008004_00490_21019_0000.E1
AT1_TOA_1PURAL19950723_042149_000000008004_00490_21019_0000.E1
AT1_AR_2PURAL19950723_143910_000000008004_00496_21025_0000.E1
AT1_AST_BPSRAL19950723_143910_000000008004_00496_21025_0000.E1
AT1_MET_2PSRAL19950723_143910_000000008004_00496_21025_0000.E1
AT1_NR_2PURAL19950723_143910_000000008004_00496_21025_0000.E1
AT1_TOA_1PURAL19950723_143910_000000008004_00496_21025_0000.E1
AT1_AR_2PURAL19950724_035054_000000008005_00003_21033_0000.E1
AT1_AST_BPSRAL19950724_035054_000000008005_00003_21033_0000.E1
AT1_MET_2PSRAL19950724_035054_000000008005_00003_21033_0000.E1
AT1_NR_2PURAL19950724_035054_000000008005_00003_21033_0000.E1
AT1_TOA_1PURAL19950724_035054_000000008005_00003_21033_0000.E1
AT1_AR_2PURAL19950725_133745_000000008005_00023_21053_0000.E1
AT1_AST_BPSRAL19950725_133745_000000008005_00023_21053_0000.E1
AT1_MET_2PSRAL19950725_133745_000000008005_00023_21053_0000.E1
AT1_NR_2PURAL19950725_133745_000000008005_00023_21053_0000.E1
AT1_TOA_1PURAL19950725_133745_000000008005_00023_21053_0000.E1
AT1_AR_2PURAL19950730_205518_000000008005_00099_21129_0000.E1
AT1_AST_BPSRAL19950730_205518_000000008005_00099_21129_0000.E1
AT1_MET_2PSRAL19950730_205518_000000008005_00099_21129_0000.E1
AT1_NR_2PURAL19950730_205518_000000008005_00099_21129_0000.E1
AT1_TOA_1PURAL19950730_205518_000000008005_00099_21129_0000.E1
AT1_AR_2PURAL19950731_000319_000000008005_00101_21131_0000.E1
AT1_AST_BPSRAL19950731_000319_000000008005_00101_21131_0000.E1
AT1_MET_2PSRAL19950731_000319_000000008005_00101_21131_0000.E1
AT1_NR_2PURAL19950731_000319_000000008005_00101_21131_0000.E1
AT1_TOA_1PURAL19950731_000319_000000008005_00101_21131_0000.E1



Products affected by invalid last longitude values
AT1_AST_BPSRAL19950818_022507_000000008005_00360_21390_0000.E1
AT1_NR_2PURAL19950818_022507_000000008005_00360_21390_0000.E1
AT1_TOA_1PURAL19950818_022507_000000008005_00360_21390_0000.E1
AT1_AR_2PURAL19950821_210325_000000008005_00414_21444_0000.E1
AT1_AST_BPSRAL19950821_210325_000000008005_00414_21444_0000.E1
AT1_MET_2PSRAL19950821_210325_000000008005_00414_21444_0000.E1
AT1_NR_2PURAL19950821_210325_000000008005_00414_21444_0000.E1
AT1_TOA_1PURAL19950821_210325_000000008005_00414_21444_0000.E1
AT1_AR_2PURAL19950828_021044_000000008006_00002_21533_0000.E1
AT1_AST_BPSRAL19950828_021044_000000008006_00002_21533_0000.E1
AT1_MET_2PSRAL19950828_021044_000000008006_00002_21533_0000.E1
AT1_NR_2PURAL19950828_021044_000000008006_00002_21533_0000.E1
AT1_TOA_1PURAL19950828_021044_000000008006_00002_21533_0000.E1
AT1_AR_2PURAL19950913_064945_000000008006_00234_21765_0000.E1
AT1_AST_BPSRAL19950913_064945_000000008006_00234_21765_0000.E1
AT1_MET_2PSRAL19950913_064945_000000008006_00234_21765_0000.E1
AT1_NR_2PURAL19950913_064945_000000008006_00234_21765_0000.E1
AT1_TOA_1PURAL19950913_064945_000000008006_00234_21765_0000.E1
AT1_AR_2PURAL19951012_153124_000000008007_00153_22185_0000.E1
AT1_AST_BPSRAL19951012_153124_000000008007_00153_22185_0000.E1
AT1_MET_2PSRAL19951012_153124_000000008007_00153_22185_0000.E1
AT1_NR_2PURAL19951012_153124_000000008007_00153_22185_0000.E1
AT1_TOA_1PURAL19951012_153124_000000008007_00153_22185_0000.E1
AT1_AR_2PURAL19951024_035846_000000008007_00318_22350_0000.E1
AT1_AST_BPSRAL19951024_035846_000000008007_00318_22350_0000.E1
AT1_MET_2PSRAL19951024_035846_000000008007_00318_22350_0000.E1
AT1_NR_2PURAL19951024_035846_000000008007_00318_22350_0000.E1
AT1_TOA_1PURAL19951024_035846_000000008007_00318_22350_0000.E1
AT1_AR_2PURAL19951024_234717_000000008007_00330_22362_0000.E1
AT1_AST_BPSRAL19951024_234717_000000008007_00330_22362_0000.E1
AT1_MET_2PSRAL19951024_234717_000000008007_00330_22362_0000.E1
AT1_NR_2PURAL19951024_234717_000000008007_00330_22362_0000.E1
AT1_TOA_1PURAL19951024_234717_000000008007_00330_22362_0000.E1
AT1_AR_2PURAL19951028_031412_000000008007_00375_22407_0000.E1
AT1_AST_BPSRAL19951028_031412_000000008007_00375_22407_0000.E1
AT1_MET_2PSRAL19951028_031412_000000008007_00375_22407_0000.E1
AT1_NR_2PURAL19951028_031412_000000008007_00375_22407_0000.E1
AT1_TOA_1PURAL19951028_031412_000000008007_00375_22407_0000.E1
AT1_AR_2PURAL19951111_043213_000000008008_00075_22608_0000.E1
AT1_AST_BPSRAL19951111_043213_000000008008_00075_22608_0000.E1
AT1_MET_2PSRAL19951111_043213_000000008008_00075_22608_0000.E1
AT1_NR_2PURAL19951111_043213_000000008008_00075_22608_0000.E1
AT1_TOA_1PURAL19951111_043213_000000008008_00075_22608_0000.E1
AT1_AR_2PURAL19951111_113332_000000008008_00079_22612_0000.E1
AT1_AST_BPSRAL19951111_113332_000000008008_00079_22612_0000.E1
AT1_MET_2PSRAL19951111_113332_000000008008_00079_22612_0000.E1
AT1_NR_2PURAL19951111_113332_000000008008_00079_22612_0000.E1
AT1_TOA_1PURAL19951111_113332_000000008008_00079_22612_0000.E1
AT1_AR_2PURAL19951113_152543_000000008008_00110_22643_0000.E1
AT1_AST_BPSRAL19951113_152543_000000008008_00110_22643_0000.E1
AT1_MET_2PSRAL19951113_152543_000000008008_00110_22643_0000.E1



Products affected by invalid last longitude values
AT1_NR_2PURAL19951113_152543_000000008008_00110_22643_0000.E1
AT1_TOA_1PURAL19951113_152543_000000008008_00110_22643_0000.E1
AT1_AR_2PURAL19951116_015620_000000008008_00145_22678_0000.E1
AT1_AST_BPSRAL19951116_015620_000000008008_00145_22678_0000.E1
AT1_MET_2PSRAL19951116_015620_000000008008_00145_22678_0000.E1
AT1_NR_2PURAL19951116_015620_000000008008_00145_22678_0000.E1
AT1_TOA_1PURAL19951116_015620_000000008008_00145_22678_0000.E1
AT1_AR_2PURAL19951116_170951_000000008008_00154_22687_0000.E1
AT1_AST_BPSRAL19951116_170951_000000008008_00154_22687_0000.E1
AT1_MET_2PSRAL19951116_170951_000000008008_00154_22687_0000.E1
AT1_NR_2PURAL19951116_170951_000000008008_00154_22687_0000.E1
AT1_TOA_1PURAL19951116_170951_000000008008_00154_22687_0000.E1
AT1_AR_2PURAL19951116_184905_000000008008_00155_22688_0000.E1
AT1_AST_BPSRAL19951116_184905_000000008008_00155_22688_0000.E1
AT1_MET_2PSRAL19951116_184905_000000008008_00155_22688_0000.E1
AT1_NR_2PURAL19951116_184905_000000008008_00155_22688_0000.E1
AT1_TOA_1PURAL19951116_184905_000000008008_00155_22688_0000.E1
AT1_AR_2PURAL19951118_160750_000000008008_00182_22715_0000.E1
AT1_AST_BPSRAL19951118_160750_000000008008_00182_22715_0000.E1
AT1_MET_2PSRAL19951118_160750_000000008008_00182_22715_0000.E1
AT1_NR_2PURAL19951118_160750_000000008008_00182_22715_0000.E1
AT1_TOA_1PURAL19951118_160750_000000008008_00182_22715_0000.E1
AT1_AR_2PURAL19951121_041820_000000008008_00218_22751_0000.E1
AT1_AST_BPSRAL19951121_041820_000000008008_00218_22751_0000.E1
AT1_MET_2PSRAL19951121_041820_000000008008_00218_22751_0000.E1
AT1_NR_2PURAL19951121_041820_000000008008_00218_22751_0000.E1
AT1_TOA_1PURAL19951121_041820_000000008008_00218_22751_0000.E1
AT1_AR_2PURAL19951121_060127_000000008008_00219_22752_0000.E1
AT1_AST_BPSRAL19951121_060127_000000008008_00219_22752_0000.E1
AT1_MET_2PSRAL19951121_060127_000000008008_00219_22752_0000.E1
AT1_NR_2PURAL19951121_060127_000000008008_00219_22752_0000.E1
AT1_TOA_1PURAL19951121_060127_000000008008_00219_22752_0000.E1
AT1_AR_2PURAL19951123_043729_000000008008_00247_22780_0000.E1
AT1_AST_BPSRAL19951123_043729_000000008008_00247_22780_0000.E1
AT1_MET_2PSRAL19951123_043729_000000008008_00247_22780_0000.E1
AT1_NR_2PURAL19951123_043729_000000008008_00247_22780_0000.E1
AT1_TOA_1PURAL19951123_043729_000000008008_00247_22780_0000.E1
AT1_AR_2PURAL19951123_063801_000000008008_00248_22781_0000.E1
AT1_AST_BPSRAL19951123_063801_000000008008_00248_22781_0000.E1
AT1_MET_2PSRAL19951123_063801_000000008008_00248_22781_0000.E1
AT1_NR_2PURAL19951123_063801_000000008008_00248_22781_0000.E1
AT1_TOA_1PURAL19951123_063801_000000008008_00248_22781_0000.E1
AT1_AR_2PURAL19951124_094533_000000008008_00264_22797_0000.E1
AT1_AST_BPSRAL19951124_094533_000000008008_00264_22797_0000.E1
AT1_MET_2PSRAL19951124_094533_000000008008_00264_22797_0000.E1
AT1_NR_2PURAL19951124_094533_000000008008_00264_22797_0000.E1
AT1_TOA_1PURAL19951124_094533_000000008008_00264_22797_0000.E1
AT1_AR_2PURAL19951126_130615_000000008008_00295_22828_0000.E1
AT1_AST_BPSRAL19951126_130615_000000008008_00295_22828_0000.E1
AT1_MET_2PSRAL19951126_130615_000000008008_00295_22828_0000.E1
AT1_NR_2PURAL19951126_130615_000000008008_00295_22828_0000.E1



Products affected by invalid last longitude values
AT1_TOA_1PURAL19951126_130615_00000008008_00295_22828_0000.E1
AT1_AR_2PURAL19951126_183456_00000008008_00298_22831_0000.E1
AT1_AST_BPSRAL19951126_183456_00000008008_00298_22831_0000.E1
AT1_MET_2PSRAL19951126_183456_00000008008_00298_22831_0000.E1
AT1_NR_2PURAL19951126_183456_00000008008_00298_22831_0000.E1
AT1_TOA_1PURAL19951126_183456_00000008008_00298_22831_0000.E1
AT1_AR_2PURAL19951212_101955_00000008009_00021_23055_0000.E1
AT1_AST_BPSRAL19951212_101955_00000008009_00021_23055_0000.E1
AT1_MET_2PSRAL19951212_101955_00000008009_00021_23055_0000.E1
AT1_NR_2PURAL19951212_101955_00000008009_00021_23055_0000.E1
AT1_TOA_1PURAL19951212_101955_00000008009_00021_23055_0000.E1
AT1_AR_2PURAL19951212_115900_00000008009_00022_23056_0000.E1
AT1_AST_BPSRAL19951212_115900_00000008009_00022_23056_0000.E1
AT1_MET_2PSRAL19951212_115900_00000008009_00022_23056_0000.E1
AT1_NR_2PURAL19951212_115900_00000008009_00022_23056_0000.E1
AT1_TOA_1PURAL19951212_115900_00000008009_00022_23056_0000.E1
AT1_AR_2PURAL19951213_010727_00000008009_00030_23064_0000.E1
AT1_AST_BPSRAL19951213_010727_00000008009_00030_23064_0000.E1
AT1_MET_2PSRAL19951213_010727_00000008009_00030_23064_0000.E1
AT1_NR_2PURAL19951213_010727_00000008009_00030_23064_0000.E1
AT1_TOA_1PURAL19951213_010727_00000008009_00030_23064_0000.E1
AT1_AR_2PURAL19951213_080705_00000008009_00034_23068_0000.E1
AT1_AST_BPSRAL19951213_080705_00000008009_00034_23068_0000.E1
AT1_MET_2PSRAL19951213_080705_00000008009_00034_23068_0000.E1
AT1_NR_2PURAL19951213_080705_00000008009_00034_23068_0000.E1
AT1_TOA_1PURAL19951213_080705_00000008009_00034_23068_0000.E1
AT1_AR_2PURAL19951214_141309_00000008009_00052_23086_0000.E1
AT1_AST_BPSRAL19951214_141309_00000008009_00052_23086_0000.E1
AT1_MET_2PSRAL19951214_141309_00000008009_00052_23086_0000.E1
AT1_NR_2PURAL19951214_141309_00000008009_00052_23086_0000.E1
AT1_TOA_1PURAL19951214_141309_00000008009_00052_23086_0000.E1
AT1_AR_2PURAL19951215_014455_00000008009_00059_23093_0000.E1
AT1_AST_BPSRAL19951215_014455_00000008009_00059_23093_0000.E1
AT1_MET_2PSRAL19951215_014455_00000008009_00059_23093_0000.E1
AT1_NR_2PURAL19951215_014455_00000008009_00059_23093_0000.E1
AT1_TOA_1PURAL19951215_014455_00000008009_00059_23093_0000.E1
AT1_AR_2PURAL19951224_050326_00000008009_00190_23224_0000.E1
AT1_AST_BPSRAL19951224_050326_00000008009_00190_23224_0000.E1
AT1_MET_2PSRAL19951224_050326_00000008009_00190_23224_0000.E1
AT1_NR_2PURAL19951224_050326_00000008009_00190_23224_0000.E1
AT1_TOA_1PURAL19951224_050326_00000008009_00190_23224_0000.E1
AT1_AR_2PURAL19951226_041819_00000008009_00218_23252_0000.E1
AT1_AST_BPSRAL19951226_041819_00000008009_00218_23252_0000.E1
AT1_MET_2PSRAL19951226_041819_00000008009_00218_23252_0000.E1
AT1_NR_2PURAL19951226_041819_00000008009_00218_23252_0000.E1
AT1_TOA_1PURAL19951226_041819_00000008009_00218_23252_0000.E1
AT1_AR_2PURAL19951226_060136_00000008009_00219_23253_0000.E1
AT1_AST_BPSRAL19951226_060136_00000008009_00219_23253_0000.E1
AT1_MET_2PSRAL19951226_060136_00000008009_00219_23253_0000.E1
AT1_NR_2PURAL19951226_060136_00000008009_00219_23253_0000.E1
AT1_TOA_1PURAL19951226_060136_00000008009_00219_23253_0000.E1



Products affected by invalid last longitude values
AT1_AR_2PURAL19951231_130616_00000008009_00295_23329_0000.E1
AT1_AST_BPSRAL19951231_130616_00000008009_00295_23329_0000.E1
AT1_MET_2PSRAL19951231_130616_00000008009_00295_23329_0000.E1
AT1_NR_2PURAL19951231_130616_00000008009_00295_23329_0000.E1
AT1_TOA_1PURAL19951231_130616_00000008009_00295_23329_0000.E1
AT1_AR_2PURAL19951231_180804_00000008009_00298_23332_0000.E1
AT1_AST_BPSRAL19951231_180804_00000008009_00298_23332_0000.E1
AT1_MET_2PSRAL19951231_180804_00000008009_00298_23332_0000.E1
AT1_NR_2PURAL19951231_180804_00000008009_00298_23332_0000.E1
AT1_TOA_1PURAL19951231_180804_00000008009_00298_23332_0000.E1
AT1_AR_2PURAL19960216_234627_00000008010_00473_24008_0000.E1
AT1_AST_BPSRAL19960216_234627_00000008010_00473_24008_0000.E1
AT1_MET_2PSRAL19960216_234627_00000008010_00473_24008_0000.E1
AT1_NR_2PURAL19960216_234627_00000008010_00473_24008_0000.E1
AT1_TOA_1PURAL19960216_234627_00000008010_00473_24008_0000.E1
AT1_AR_2PURAL19960305_004957_00000008011_00216_24252_0000.E1
AT1_AST_BPSRAL19960305_004957_00000008011_00216_24252_0000.E1
AT1_MET_2PSRAL19960305_004957_00000008011_00216_24252_0000.E1
AT1_NR_2PURAL19960305_004957_00000008011_00216_24252_0000.E1
AT1_TOA_1PURAL19960305_004957_00000008011_00216_24252_0000.E1
AT1_AR_2PURAL19960314_194852_00000008011_00356_24392_0000.E1
AT1_AST_BPSRAL19960314_194852_00000008011_00356_24392_0000.E1
AT1_MET_2PSRAL19960314_194852_00000008011_00356_24392_0000.E1
AT1_NR_2PURAL19960314_194852_00000008011_00356_24392_0000.E1
AT1_TOA_1PURAL19960314_194852_00000008011_00356_24392_0000.E1
AT1_AR_2PURAL19960314_212828_00000008011_00357_24393_0000.E1
AT1_AST_BPSRAL19960314_212828_00000008011_00357_24393_0000.E1
AT1_MET_2PSRAL19960314_212828_00000008011_00357_24393_0000.E1
AT1_NR_2PURAL19960314_212828_00000008011_00357_24393_0000.E1
AT1_TOA_1PURAL19960314_212828_00000008011_00357_24393_0000.E1
AT1_AR_2PURAL19960316_071028_00000008011_00377_24413_0000.E1
AT1_AST_BPSRAL19960316_071028_00000008011_00377_24413_0000.E1
AT1_MET_2PSRAL19960316_071028_00000008011_00377_24413_0000.E1
AT1_NR_2PURAL19960316_071028_00000008011_00377_24413_0000.E1
AT1_TOA_1PURAL19960316_071028_00000008011_00377_24413_0000.E1
AT1_AR_2PURAL19960317_044033_00000008011_00390_24426_0000.E1
AT1_AST_BPSRAL19960317_044033_00000008011_00390_24426_0000.E1
AT1_MET_2PSRAL19960317_044033_00000008011_00390_24426_0000.E1
AT1_NR_2PURAL19960317_044033_00000008011_00390_24426_0000.E1
AT1_TOA_1PURAL19960317_044033_00000008011_00390_24426_0000.E1
AT1_AR_2PURAL19960402_131719_00000008012_00123_24660_0000.E1
AT1_AST_BPSRAL19960402_131719_00000008012_00123_24660_0000.E1
AT1_MET_2PSRAL19960402_131719_00000008012_00123_24660_0000.E1
AT1_NR_2PURAL19960402_131719_00000008012_00123_24660_0000.E1
AT1_TOA_1PURAL19960402_131719_00000008012_00123_24660_0000.E1
AT1_AR_2PURAL19960430_215116_00000008013_00028_25066_0000.E1
AT1_AST_BPSRAL19960430_215116_00000008013_00028_25066_0000.E1
AT1_MET_2PSRAL19960430_215116_00000008013_00028_25066_0000.E1
AT1_NR_2PURAL19960430_215116_00000008013_00028_25066_0000.E1
AT1_TOA_1PURAL19960430_215116_00000008013_00028_25066_0000.E1
AT1_AR_2PURAL19960504_011320_00000008013_00073_25111_0000.E1



Products affected by invalid last longitude values
AT1_AST_BPSRAL19960504_011320_000000008013_00073_25111_0000.E1
AT1_MET_2PSRAL19960504_011320_000000008013_00073_25111_0000.E1
AT1_NR_2PURAL19960504_011320_000000008013_00073_25111_0000.E1
AT1_TOA_1PURAL19960504_011320_000000008013_00073_25111_0000.E1
AT1_AR_2PURAL19960504_225601_000000008013_00086_25124_0000.E1
AT1_AST_BPSRAL19960504_225601_000000008013_00086_25124_0000.E1
AT1_MET_2PSRAL19960504_225601_000000008013_00086_25124_0000.E1
AT1_NR_2PURAL19960504_225601_000000008013_00086_25124_0000.E1
AT1_TOA_1PURAL19960504_225601_000000008013_00086_25124_0000.E1
AT1_AR_2PURAL19960506_220238_000000008013_00114_25152_0000.E1
AT1_AST_BPSRAL19960506_220238_000000008013_00114_25152_0000.E1
AT1_MET_2PSRAL19960506_220238_000000008013_00114_25152_0000.E1
AT1_NR_2PURAL19960506_220238_000000008013_00114_25152_0000.E1
AT1_TOA_1PURAL19960506_220238_000000008013_00114_25152_0000.E1
AT1_AR_2PURAL19960518_204552_000000008013_00285_25323_0000.E1
AT1_AST_BPSRAL19960518_204552_000000008013_00285_25323_0000.E1
AT1_MET_2PSRAL19960518_204552_000000008013_00285_25323_0000.E1
AT1_NR_2PURAL19960518_204552_000000008013_00285_25323_0000.E1
AT1_TOA_1PURAL19960518_204552_000000008013_00285_25323_0000.E1
AT1_AR_2PURAL19960518_235455_000000008013_00287_25325_0000.E1
AT1_AST_BPSRAL19960518_235455_000000008013_00287_25325_0000.E1
AT1_MET_2PSRAL19960518_235455_000000008013_00287_25325_0000.E1
AT1_NR_2PURAL19960518_235455_000000008013_00287_25325_0000.E1
AT1_TOA_1PURAL19960518_235455_000000008013_00287_25325_0000.E1
AT1_AR_2PURAL19960519_014204_000000008013_00288_25326_0000.E1
AT1_AST_BPSRAL19960519_014204_000000008013_00288_25326_0000.E1
AT1_MET_2PSRAL19960519_014204_000000008013_00288_25326_0000.E1
AT1_NR_2PURAL19960519_014204_000000008013_00288_25326_0000.E1
AT1_TOA_1PURAL19960519_014204_000000008013_00288_25326_0000.E1
AT1_AR_2PURAL19960520_042929_000000008013_00304_25342_0000.E1
AT1_AST_BPSRAL19960520_042929_000000008013_00304_25342_0000.E1
AT1_MET_2PSRAL19960520_042929_000000008013_00304_25342_0000.E1
AT1_NR_2PURAL19960520_042929_000000008013_00304_25342_0000.E1
AT1_TOA_1PURAL19960520_042929_000000008013_00304_25342_0000.E1
AT1_AR_2PURAL19960520_061257_000000008013_00305_25343_0000.E1
AT1_AST_BPSRAL19960520_061257_000000008013_00305_25343_0000.E1
AT1_MET_2PSRAL19960520_061257_000000008013_00305_25343_0000.E1
AT1_NR_2PURAL19960520_061257_000000008013_00305_25343_0000.E1
AT1_TOA_1PURAL19960520_061257_000000008013_00305_25343_0000.E1
AT1_AR_2PURAL19960521_054148_000000008013_00319_25357_0000.E1
AT1_AST_BPSRAL19960521_054148_000000008013_00319_25357_0000.E1
AT1_MET_2PSRAL19960521_054148_000000008013_00319_25357_0000.E1
AT1_NR_2PURAL19960521_054148_000000008013_00319_25357_0000.E1
AT1_TOA_1PURAL19960521_054148_000000008013_00319_25357_0000.E1
AT1_AR_2PURAL19960602_130034_000000008013_00495_25533_0000.E1
AT1_AST_BPSRAL19960602_130034_000000008013_00495_25533_0000.E1
AT1_MET_2PSRAL19960602_130034_000000008013_00495_25533_0000.E1
AT1_NR_2PURAL19960602_130034_000000008013_00495_25533_0000.E1
AT1_TOA_1PURAL19960602_130034_000000008013_00495_25533_0000.E1
AT1_AR_2PURAL19961022_115916_000000008018_00022_27565_0000.E1
AT1_AST_BPSRAL19961022_115916_000000008018_00022_27565_0000.E1



Products affected by invalid last longitude values
AT1_MET_2PSRAL19961022_115916_000000008018_00022_27565_0000.E1
AT1_NR_2PURAL19961022_115916_000000008018_00022_27565_0000.E1
AT1_TOA_1PURAL19961022_115916_000000008018_00022_27565_0000.E1
AT1_AR_2PURAL19961022_201150_000000008018_00027_27570_0000.E1
AT1_AST_BPSRAL19961022_201150_000000008018_00027_27570_0000.E1
AT1_MET_2PSRAL19961022_201150_000000008018_00027_27570_0000.E1
AT1_NR_2PURAL19961022_201150_000000008018_00027_27570_0000.E1
AT1_TOA_1PURAL19961022_201150_000000008018_00027_27570_0000.E1
AT1_AR_2PURAL19961231_083913_000000008020_00020_28565_0000.E1
AT1_AST_BPSRAL19961231_083913_000000008020_00020_28565_0000.E1
AT1_MET_2PSRAL19961231_083913_000000008020_00020_28565_0000.E1
AT1_NR_2PURAL19961231_083913_000000008020_00020_28565_0000.E1
AT1_TOA_1PURAL19961231_083913_000000008020_00020_28565_0000.E1
AT1_AR_2PURAL19961231_101959_000000008020_00021_28566_0000.E1
AT1_AST_BPSRAL19961231_101959_000000008020_00021_28566_0000.E1
AT1_MET_2PSRAL19961231_101959_000000008020_00021_28566_0000.E1
AT1_NR_2PURAL19961231_101959_000000008020_00021_28566_0000.E1
AT1_TOA_1PURAL19961231_101959_000000008020_00021_28566_0000.E1
AT1_AR_2PURAL19970102_053901_000000008020_00047_28592_0000.E1
AT1_AST_BPSRAL19970102_053901_000000008020_00047_28592_0000.E1
AT1_MET_2PSRAL19970102_053901_000000008020_00047_28592_0000.E1
AT1_NR_2PURAL19970102_053901_000000008020_00047_28592_0000.E1
AT1_TOA_1PURAL19970102_053901_000000008020_00047_28592_0000.E1
AT1_AR_2PURAL19970312_010722_000000008022_00030_29577_0000.E1
AT1_AST_BPSRAL19970312_010722_000000008022_00030_29577_0000.E1
AT1_MET_2PSRAL19970312_010722_000000008022_00030_29577_0000.E1
AT1_NR_2PURAL19970312_010722_000000008022_00030_29577_0000.E1
AT1_TOA_1PURAL19970312_010722_000000008022_00030_29577_0000.E1
AT2_AR_2PURAL19950708_223233_000000001002_00272_01128_0000.E2
AT2_AST_BPSRAL19950708_223233_000000001002_00272_01128_0000.E2
AT2_MET_2PSRAL19950708_223233_000000001002_00272_01128_0000.E2
AT2_NR_2PURAL19950708_223233_000000001002_00272_01128_0000.E2
AT2_TOA_1PURAL19950708_223233_000000001002_00272_01128_0000.E2
AT2_AR_2PURAL19950826_050619_000000001003_00462_01819_0000.E2
AT2_AST_BPSRAL19950826_050619_000000001003_00462_01819_0000.E2
AT2_MET_2PSRAL19950826_050619_000000001003_00462_01819_0000.E2
AT2_NR_2PURAL19950826_050619_000000001003_00462_01819_0000.E2
AT2_TOA_1PURAL19950826_050619_000000001003_00462_01819_0000.E2
AT2_AR_2PURAL19990315_204852_000000001040_00500_20394_0000.E2
AT2_AST_BPSRAL19990315_204852_000000001040_00500_20394_0000.E2
AT2_MET_2PSRAL19990315_204852_000000001040_00500_20394_0000.E2
AT2_NR_2PURAL19990315_204852_000000001040_00500_20394_0000.E2
AT2_TOA_1PURAL19990315_204852_000000001040_00500_20394_0000.E2



Table 7. Products affected by invalid last latitudes and longitudes in SPH

Products affected by invalid last latitudes <u>and</u> longitudes
AT1_AR_2PURAL19910824_004659_000000001011_00016_00543_0000.E1
AT1_AST_BPSRAL19910824_004659_000000001011_00016_00543_0000.E1
AT1_MET_2PSRAL19910824_004659_000000001011_00016_00543_0000.E1
AT1_NR_2PURAL19910824_004659_000000001011_00016_00543_0000.E1
AT1_TOA_1PURAL19910824_004659_000000001011_00016_00543_0000.E1
AT1_AR_2PURAL19920615_074620_000000004003_00134_04788_0000.E1
AT1_AST_BPSRAL19920615_074620_000000004003_00134_04788_0000.E1
AT1_MET_2PSRAL19920615_074620_000000004003_00134_04788_0000.E1
AT1_NR_2PURAL19920615_074620_000000004003_00134_04788_0000.E1
AT1_TOA_1PURAL19920615_074620_000000004003_00134_04788_0000.E1
AT1_AR_2PURAL19921129_112021_000000004008_00022_07181_0000.E1
AT1_AST_BPSRAL19921129_112021_000000004008_00022_07181_0000.E1
AT1_MET_2PSRAL19921129_112021_000000004008_00022_07181_0000.E1
AT1_NR_2PURAL19921129_112021_000000004008_00022_07181_0000.E1
AT1_TOA_1PURAL19921129_112021_000000004008_00022_07181_0000.E1
AT2_AR_2PURAL19950810_001141_000000001003_00230_01587_0000.E2
AT2_AST_BPSRAL19950810_001141_000000001003_00230_01587_0000.E2
AT2_MET_2PSRAL19950810_001141_000000001003_00230_01587_0000.E2
AT2_NR_2PURAL19950810_001141_000000001003_00230_01587_0000.E2
AT2_TOA_1PURAL19950810_001141_000000001003_00230_01587_0000.E2
AT2_AR_2PURAL19951008_224113_000000001005_00086_02445_0000.E2
AT2_AST_BPSRAL19951008_224113_000000001005_00086_02445_0000.E2
AT2_MET_2PSRAL19951008_224113_000000001005_00086_02445_0000.E2
AT2_NR_2PURAL19951008_224113_000000001005_00086_02445_0000.E2
AT2_TOA_1PURAL19951008_224113_000000001005_00086_02445_0000.E2
AT2_AR_2PURAL19951223_100555_000000001007_00164_03525_0000.E2
AT2_AST_BPSRAL19951223_100555_000000001007_00164_03525_0000.E2
AT2_MET_2PSRAL19951223_100555_000000001007_00164_03525_0000.E2
AT2_NR_2PURAL19951223_100555_000000001007_00164_03525_0000.E2
AT2_TOA_1PURAL19951223_100555_000000001007_00164_03525_0000.E2
AT2_AR_2PURAL19951224_073204_000000001007_00177_03538_0000.E2
AT2_AST_BPSRAL19951224_073204_000000001007_00177_03538_0000.E2
AT2_MET_2PSRAL19951224_073204_000000001007_00177_03538_0000.E2
AT2_NR_2PURAL19951224_073204_000000001007_00177_03538_0000.E2
AT2_TOA_1PURAL19951224_073204_000000001007_00177_03538_0000.E2
AT2_AR_2PURAL19951224_111404_000000001007_00179_03540_0000.E2
AT2_AST_BPSRAL19951224_111404_000000001007_00179_03540_0000.E2
AT2_MET_2PSRAL19951224_111404_000000001007_00179_03540_0000.E2
AT2_NR_2PURAL19951224_111404_000000001007_00179_03540_0000.E2
AT2_TOA_1PURAL19951224_111404_000000001007_00179_03540_0000.E2
AT2_AR_2PURAL19951228_002014_000000001007_00230_03591_0000.E2
AT2_AST_BPSRAL19951228_002014_000000001007_00230_03591_0000.E2
AT2_MET_2PSRAL19951228_002014_000000001007_00230_03591_0000.E2
AT2_NR_2PURAL19951228_002014_000000001007_00230_03591_0000.E2
AT2_TOA_1PURAL19951228_002014_000000001007_00230_03591_0000.E2
AT2_AR_2PURAL19951231_172708_000000001007_00283_03644_0000.E2
AT2_AST_BPSRAL19951231_172708_000000001007_00283_03644_0000.E2
AT2_MET_2PSRAL19951231_172708_000000001007_00283_03644_0000.E2



Products affected by invalid last latitudes <u>and</u> longitudes
AT2_NR_2PURAL19951231_172708_000000001007_00283_03644_0000.E2
AT2_TOA_1PURAL19951231_172708_000000001007_00283_03644_0000.E2
AT2_AR_2PURAL19961011_041723_000000001015_00347_07716_0000.E2
AT2_AST_BPSRAL19961011_041723_000000001015_00347_07716_0000.E2
AT2_MET_2PSRAL19961011_041723_000000001015_00347_07716_0000.E2
AT2_NR_2PURAL19961011_041723_000000001015_00347_07716_0000.E2
AT2_TOA_1PURAL19961011_041723_000000001015_00347_07716_0000.E2
AT2_AR_2PURAL19961102_114500_000000001016_00165_08035_0000.E2
AT2_AST_BPSRAL19961102_114500_000000001016_00165_08035_0000.E2
AT2_MET_2PSRAL19961102_114500_000000001016_00165_08035_0000.E2
AT2_NR_2PURAL19961102_114500_000000001016_00165_08035_0000.E2
AT2_TOA_1PURAL19961102_114500_000000001016_00165_08035_0000.E2
AT2_AST_BPSRAL19970113_214918_000000001018_00200_09072_0000.E2
AT2_NR_2PURAL19970113_214918_000000001018_00200_09072_0000.E2
AT2_TOA_1PURAL19970113_214918_000000001018_00200_09072_0000.E2
AT2_AR_2PURAL19971031_041717_000000001026_00347_13227_0000.E2
AT2_AST_BPSRAL19971031_041717_000000001026_00347_13227_0000.E2
AT2_MET_2PSRAL19971031_041717_000000001026_00347_13227_0000.E2
AT2_NR_2PURAL19971031_041717_000000001026_00347_13227_0000.E2
AT2_TOA_1PURAL19971031_041717_000000001026_00347_13227_0000.E2
AT2_AR_2PURAL19971126_101530_000000001027_00221_13602_0000.E2
AT2_AST_BPSRAL19971126_101530_000000001027_00221_13602_0000.E2
AT2_MET_2PSRAL19971126_101530_000000001027_00221_13602_0000.E2
AT2_NR_2PURAL19971126_101530_000000001027_00221_13602_0000.E2
AT2_TOA_1PURAL19971126_101530_000000001027_00221_13602_0000.E2
AT2_AR_2PURAL19980309_221404_000000001030_00200_15084_0000.E2
AT2_AST_BPSRAL19980309_221404_000000001030_00200_15084_0000.E2
AT2_MET_2PSRAL19980309_221404_000000001030_00200_15084_0000.E2
AT2_NR_2PURAL19980309_221404_000000001030_00200_15084_0000.E2
AT2_TOA_1PURAL19980309_221404_000000001030_00200_15084_0000.E2
AT2_AST_BPSRAL19980315_001300_000000001030_00273_15157_0000.E2
AT2_NR_2PURAL19980315_001300_000000001030_00273_15157_0000.E2
AT2_TOA_1PURAL19980315_001300_000000001030_00273_15157_0000.E2
AT2_AR_2PURAL19981118_173231_000000001037_00326_18717_0000.E2
AT2_AST_BPSRAL19981118_173231_000000001037_00326_18717_0000.E2
AT2_MET_2PSRAL19981118_173231_000000001037_00326_18717_0000.E2
AT2_NR_2PURAL19981118_173231_000000001037_00326_18717_0000.E2
AT2_TOA_1PURAL19981118_173231_000000001037_00326_18717_0000.E2
AT2_AR_2PURAL19981119_000030_000000001037_00330_18721_0000.E2
AT2_AST_BPSRAL19981119_000030_000000001037_00330_18721_0000.E2
AT2_MET_2PSRAL19981119_000030_000000001037_00330_18721_0000.E2
AT2_NR_2PURAL19981119_000030_000000001037_00330_18721_0000.E2
AT2_TOA_1PURAL19981119_000030_000000001037_00330_18721_0000.E2
AT2_AR_2PURAL19981119_032735_000000001037_00332_18723_0000.E2
AT2_AST_BPSRAL19981119_032735_000000001037_00332_18723_0000.E2
AT2_MET_2PSRAL19981119_032735_000000001037_00332_18723_0000.E2
AT2_NR_2PURAL19981119_032735_000000001037_00332_18723_0000.E2
AT2_TOA_1PURAL19981119_032735_000000001037_00332_18723_0000.E2
AT2_AR_2PURAL19981119_084749_000000001037_00335_18726_0000.E2
AT2_AST_BPSRAL19981119_084749_000000001037_00335_18726_0000.E2
AT2_MET_2PSRAL19981119_084749_000000001037_00335_18726_0000.E2



Products affected by invalid last latitudes <u>and</u> longitudes
AT2_NR_2PURAL19981119_084749_000000001037_00335_18726_0000.E2
AT2_TOA_1PURAL19981119_084749_000000001037_00335_18726_0000.E2
AT2_AR_2PURAL19990624_074959_000000001043_00435_21832_0000.E2
AT2_AST_BPSRAL19990624_074959_000000001043_00435_21832_0000.E2
AT2_MET_2PSRAL19990624_074959_000000001043_00435_21832_0000.E2
AT2_NR_2PURAL19990624_074959_000000001043_00435_21832_0000.E2
AT2_TOA_1PURAL19990624_074959_000000001043_00435_21832_0000.E2
AT2_AR_2PURAL19990812_040711_000000001045_00132_22531_0000.E2
AT2_AST_BPSRAL19990812_040711_000000001045_00132_22531_0000.E2
AT2_MET_2PSRAL19990812_040711_000000001045_00132_22531_0000.E2
AT2_NR_2PURAL19990812_040711_000000001045_00132_22531_0000.E2
AT2_TOA_1PURAL19990812_040711_000000001045_00132_22531_0000.E2
AT2_AR_2PURAL19990926_001257_000000001046_00273_23173_0000.E2
AT2_AST_BPSRAL19990926_001257_000000001046_00273_23173_0000.E2
AT2_MET_2PSRAL19990926_001257_000000001046_00273_23173_0000.E2
AT2_NR_2PURAL19990926_001257_000000001046_00273_23173_0000.E2
AT2_TOA_1PURAL19990926_001257_000000001046_00273_23173_0000.E2
AT2_AR_2PURAL19991106_054727_000000001047_00362_23763_0000.E2
AT2_AST_BPSRAL19991106_054727_000000001047_00362_23763_0000.E2
AT2_MET_2PSRAL19991106_054727_000000001047_00362_23763_0000.E2
AT2_NR_2PURAL19991106_054727_000000001047_00362_23763_0000.E2
AT2_TOA_1PURAL19991106_054727_000000001047_00362_23763_0000.E2
AT2_AR_2PURAL20000117_132002_000000001049_00395_24798_0000.E2
AT2_AST_BPSRAL20000117_132002_000000001049_00395_24798_0000.E2
AT2_MET_2PSRAL20000117_132002_000000001049_00395_24798_0000.E2
AT2_NR_2PURAL20000117_132002_000000001049_00395_24798_0000.E2
AT2_TOA_1PURAL20000117_132002_000000001049_00395_24798_0000.E2
AT2_AST_BPSRAL20000210_141537_000000001050_00238_25142_0000.E2
AT2_NR_2PURAL20000210_141537_000000001050_00238_25142_0000.E2
AT2_TOA_1PURAL20000210_141537_000000001050_00238_25142_0000.E2
AT2_AR_2PURAL20000320_205827_000000001051_00299_25704_0000.E2
AT2_AST_BPSRAL20000320_205827_000000001051_00299_25704_0000.E2
AT2_MET_2PSRAL20000320_205827_000000001051_00299_25704_0000.E2
AT2_NR_2PURAL20000320_205827_000000001051_00299_25704_0000.E2
AT2_TOA_1PURAL20000320_205827_000000001051_00299_25704_0000.E2
AT2_AR_2PURAL20000320_215416_000000001051_00300_25705_0000.E2
AT2_AST_BPSRAL20000320_215416_000000001051_00300_25705_0000.E2
AT2_MET_2PSRAL20000320_215416_000000001051_00300_25705_0000.E2
AT2_NR_2PURAL20000320_215416_000000001051_00300_25705_0000.E2
AT2_TOA_1PURAL20000320_215416_000000001051_00300_25705_0000.E2
AT2_AR_2PURAL20000321_023101_000000001051_00303_25708_0000.E2
AT2_AST_BPSRAL20000321_023101_000000001051_00303_25708_0000.E2
AT2_MET_2PSRAL20000321_023101_000000001051_00303_25708_0000.E2
AT2_NR_2PURAL20000321_023101_000000001051_00303_25708_0000.E2
AT2_TOA_1PURAL20000321_023101_000000001051_00303_25708_0000.E2
AT2_AR_2PURAL20000321_042938_000000001051_00304_25709_0000.E2
AT2_AST_BPSRAL20000321_042938_000000001051_00304_25709_0000.E2
AT2_MET_2PSRAL20000321_042938_000000001051_00304_25709_0000.E2
AT2_NR_2PURAL20000321_042938_000000001051_00304_25709_0000.E2
AT2_TOA_1PURAL20000321_042938_000000001051_00304_25709_0000.E2
AT2_AR_2PURAL20000410_003355_000000001052_00087_25993_0000.E2



Products affected by invalid last latitudes <u>and</u> longitudes
AT2_AST_BPSRAL20000410_003355_000000001052_00087_25993_0000.E2
AT2_MET_2PSRAL20000410_003355_000000001052_00087_25993_0000.E2
AT2_NR_2PURAL20000410_003355_000000001052_00087_25993_0000.E2
AT2_TOA_1PURAL20000410_003355_000000001052_00087_25993_0000.E2
AT2_AR_2PURAL20000705_205136_000000001054_00328_27236_0000.E2
AT2_AST_BPURAL20000705_205136_000000001054_00328_27236_0000.E2
AT2_MET_2PURAL20000705_205136_000000001054_00328_27236_0000.E2
AT2_NR_2PURAL20000705_205136_000000001054_00328_27236_0000.E2
AT2_TOA_1PURAL20000705_205136_000000001054_00328_27236_0000.E2
AT2_AR_2PURAL20000706_032745_000000001054_00332_27240_0000.E2
AT2_AST_BPURAL20000706_032745_000000001054_00332_27240_0000.E2
AT2_MET_2PURAL20000706_032745_000000001054_00332_27240_0000.E2
AT2_NR_2PURAL20000706_032745_000000001054_00332_27240_0000.E2
AT2_TOA_1PURAL20000706_032745_000000001054_00332_27240_0000.E2
AT2_AR_2PURAL20000810_120740_000000001055_00337_27746_0000.E2
AT2_AST_BPSRAL20000810_120740_000000001055_00337_27746_0000.E2
AT2_MET_2PSRAL20000810_120740_000000001055_00337_27746_0000.E2
AT2_NR_2PURAL20000810_120740_000000001055_00337_27746_0000.E2
AT2_TOA_1PURAL20000810_120740_000000001055_00337_27746_0000.E2
AT2_AR_2PURAL20001207_105104_000000001059_00036_29449_0000.E2
AT2_AST_BPSRAL20001207_105104_000000001059_00036_29449_0000.E2
AT2_MET_2PSRAL20001207_105104_000000001059_00036_29449_0000.E2
AT2_NR_2PURAL20001207_105104_000000001059_00036_29449_0000.E2
AT2_TOA_1PURAL20001207_105104_000000001059_00036_29449_0000.E2
AT2_AR_2PURAL20001212_085057_000000001059_00106_29519_0000.E2
AT2_AST_BPSRAL20001212_085057_000000001059_00106_29519_0000.E2
AT2_MET_2PSRAL20001212_085057_000000001059_00106_29519_0000.E2
AT2_NR_2PURAL20001212_085057_000000001059_00106_29519_0000.E2
AT2_TOA_1PURAL20001212_085057_000000001059_00106_29519_0000.E2
AT2_AR_2PURAL20001216_114500_000000001059_00165_29578_0000.E2
AT2_AST_BPSRAL20001216_114500_000000001059_00165_29578_0000.E2
AT2_MET_2PSRAL20001216_114500_000000001059_00165_29578_0000.E2
AT2_NR_2PURAL20001216_114500_000000001059_00165_29578_0000.E2
AT2_TOA_1PURAL20001216_114500_000000001059_00165_29578_0000.E2
AT2_AR_2PURAL20001222_101711_000000001059_00250_29663_0000.E2
AT2_AST_BPSRAL20001222_101711_000000001059_00250_29663_0000.E2
AT2_MET_2PSRAL20001222_101711_000000001059_00250_29663_0000.E2
AT2_NR_2PURAL20001222_101711_000000001059_00250_29663_0000.E2
AT2_TOA_1PURAL20001222_101711_000000001059_00250_29663_0000.E2
AT2_AR_2PURAL20010113_102551_000000001060_00064_29978_0000.E2
AT2_AST_BPSRAL20010113_102551_000000001060_00064_29978_0000.E2
AT2_MET_2PSRAL20010113_102551_000000001060_00064_29978_0000.E2
AT2_NR_2PURAL20010113_102551_000000001060_00064_29978_0000.E2
AT2_TOA_1PURAL20010113_102551_000000001060_00064_29978_0000.E2
AT2_AR_2PURAL20010207_185202_000000001060_00427_30341_0000.E2
AT2_AST_BPURAL20010207_185202_000000001060_00427_30341_0000.E2
AT2_MET_2PURAL20010207_185202_000000001060_00427_30341_0000.E2
AT2_NR_2PURAL20010207_185202_000000001060_00427_30341_0000.E2
AT2_TOA_1PURAL20010207_185202_000000001060_00427_30341_0000.E2
AT2_AR_2PURAL20010219_054448_000000001061_00090_30505_0000.E2
AT2_AST_BPURAL20010219_054448_000000001061_00090_30505_0000.E2



Products affected by invalid last latitudes <u>and</u> longitudes
AT2_MET_2PURAL20010219_054448_000000001061_00090_30505_0000.E2
AT2_NR_2PURAL20010219_054448_000000001061_00090_30505_0000.E2
AT2_TOA_1PURAL20010219_054448_000000001061_00090_30505_0000.E2
AT2_AR_2PURAL20010222_055035_000000001061_00133_30548_0000.E2
AT2_AST_BPURAL20010222_055035_000000001061_00133_30548_0000.E2
AT2_MET_2PURAL20010222_055035_000000001061_00133_30548_0000.E2
AT2_NR_2PURAL20010222_055035_000000001061_00133_30548_0000.E2
AT2_TOA_1PURAL20010222_055035_000000001061_00133_30548_0000.E2
AT2_AR_2PURAL20010310_054750_000000001061_00362_30777_0000.E2
AT2_AST_BPSRAL20010310_054750_000000001061_00362_30777_0000.E2
AT2_MET_2PSRAL20010310_054750_000000001061_00362_30777_0000.E2
AT2_NR_2PURAL20010310_054750_000000001061_00362_30777_0000.E2
AT2_TOA_1PURAL20010310_054750_000000001061_00362_30777_0000.E2
AT2_AR_2PURAL20010411_123806_000000001062_00323_31239_0000.E2
AT2_AST_BPSRAL20010411_123806_000000001062_00323_31239_0000.E2
AT2_MET_2PSRAL20010411_123806_000000001062_00323_31239_0000.E2
AT2_NR_2PURAL20010411_123806_000000001062_00323_31239_0000.E2
AT2_TOA_1PURAL20010411_123806_000000001062_00323_31239_0000.E2
AT2_AR_2PURAL20010517_102818_000000001063_00336_31753_0000.E2
AT2_AST_BPURAL20010517_102818_000000001063_00336_31753_0000.E2
AT2_MET_2PURAL20010517_102818_000000001063_00336_31753_0000.E2
AT2_NR_2PURAL20010517_102818_000000001063_00336_31753_0000.E2
AT2_TOA_1PURAL20010517_102818_000000001063_00336_31753_0000.E2
AT2_AR_2PURAL20010524_100818_000000001063_00436_31853_0000.E2
AT2_AST_BPURAL20010524_100818_000000001063_00436_31853_0000.E2
AT2_MET_2PURAL20010524_100818_000000001063_00436_31853_0000.E2
AT2_NR_2PURAL20010524_100818_000000001063_00436_31853_0000.E2
AT2_TOA_1PURAL20010524_100818_000000001063_00436_31853_0000.E2
AT2_AR_2PURAL20010524_200004_000000001063_00442_31859_0000.E2
AT2_AST_BPURAL20010524_200004_000000001063_00442_31859_0000.E2
AT2_MET_2PURAL20010524_200004_000000001063_00442_31859_0000.E2
AT2_NR_2PURAL20010524_200004_000000001063_00442_31859_0000.E2
AT2_TOA_1PURAL20010524_200004_000000001063_00442_31859_0000.E2
AT2_AR_2PURAL20010525_060750_000000001063_00448_31865_0000.E2
AT2_AST_BPURAL20010525_060750_000000001063_00448_31865_0000.E2
AT2_MET_2PURAL20010525_060750_000000001063_00448_31865_0000.E2
AT2_NR_2PURAL20010525_060750_000000001063_00448_31865_0000.E2
AT2_TOA_1PURAL20010525_060750_000000001063_00448_31865_0000.E2
AT2_AR_2PURAL20010526_090503_000000001063_00464_31881_0000.E2
AT2_AST_BPURAL20010526_090503_000000001063_00464_31881_0000.E2
AT2_MET_2PURAL20010526_090503_000000001063_00464_31881_0000.E2
AT2_NR_2PURAL20010526_090503_000000001063_00464_31881_0000.E2
AT2_TOA_1PURAL20010526_090503_000000001063_00464_31881_0000.E2
AT2_AR_2PURAL20010526_134423_000000001063_00467_31884_0000.E2
AT2_AST_BPURAL20010526_134423_000000001063_00467_31884_0000.E2
AT2_MET_2PURAL20010526_134423_000000001063_00467_31884_0000.E2
AT2_NR_2PURAL20010526_134423_000000001063_00467_31884_0000.E2
AT2_TOA_1PURAL20010526_134423_000000001063_00467_31884_0000.E2
AT2_AR_2PURAL20010526_185730_000000001063_00470_31887_0000.E2
AT2_AST_BPURAL20010526_185730_000000001063_00470_31887_0000.E2
AT2_MET_2PURAL20010526_185730_000000001063_00470_31887_0000.E2



Products affected by invalid last latitudes <u>and</u> longitudes
AT2_NR_2PURAL20010526_185730_000000001063_00470_31887_0000.E2
AT2_TOA_1PURAL20010526_185730_000000001063_00470_31887_0000.E2
AT2_AR_2PURAL20010527_083304_000000001063_00478_31895_0000.E2
AT2_AST_BPURAL20010527_083304_000000001063_00478_31895_0000.E2
AT2_MET_2PURAL20010527_083304_000000001063_00478_31895_0000.E2
AT2_NR_2PURAL20010527_083304_000000001063_00478_31895_0000.E2
AT2_TOA_1PURAL20010527_083304_000000001063_00478_31895_0000.E2
AT2_AR_2PURAL20010527_115305_000000001063_00480_31897_0000.E2
AT2_AST_BPURAL20010527_115305_000000001063_00480_31897_0000.E2
AT2_MET_2PURAL20010527_115305_000000001063_00480_31897_0000.E2
AT2_NR_2PURAL20010527_115305_000000001063_00480_31897_0000.E2
AT2_TOA_1PURAL20010527_115305_000000001063_00480_31897_0000.E2
AT2_AR_2PURAL20010528_155033_000000001063_00497_31914_0000.E2
AT2_AST_BPURAL20010528_155033_000000001063_00497_31914_0000.E2
AT2_MET_2PURAL20010528_155033_000000001063_00497_31914_0000.E2
AT2_NR_2PURAL20010528_155033_000000001063_00497_31914_0000.E2
AT2_TOA_1PURAL20010528_155033_000000001063_00497_31914_0000.E2
AT2_AR_2PURAL20010529_165548_000000001064_00011_31929_0000.E2
AT2_AST_BPURAL20010529_165548_000000001064_00011_31929_0000.E2
AT2_MET_2PURAL20010529_165548_000000001064_00011_31929_0000.E2
AT2_NR_2PURAL20010529_165548_000000001064_00011_31929_0000.E2
AT2_TOA_1PURAL20010529_165548_000000001064_00011_31929_0000.E2
AT2_AR_2PURAL20010903_114527_000000001066_00394_33314_0000.E2
AT2_AST_BPSRAL20010903_114527_000000001066_00394_33314_0000.E2
AT2_MET_2PSRAL20010903_114527_000000001066_00394_33314_0000.E2
AT2_NR_2PURAL20010903_114527_000000001066_00394_33314_0000.E2
AT2_TOA_1PURAL20010903_114527_000000001066_00394_33314_0000.E2
AT2_AR_2PURAL20010903_130830_000000001066_00395_33315_0000.E2
AT2_AST_BPSRAL20010903_130830_000000001066_00395_33315_0000.E2
AT2_MET_2PSRAL20010903_130830_000000001066_00395_33315_0000.E2
AT2_NR_2PURAL20010903_130830_000000001066_00395_33315_0000.E2
AT2_TOA_1PURAL20010903_130830_000000001066_00395_33315_0000.E2
AT2_AR_2PURAL20010904_004105_000000001066_00402_33322_0000.E2
AT2_AST_BPSRAL20010904_004105_000000001066_00402_33322_0000.E2
AT2_MET_2PSRAL20010904_004105_000000001066_00402_33322_0000.E2
AT2_NR_2PURAL20010904_004105_000000001066_00402_33322_0000.E2
AT2_TOA_1PURAL20010904_004105_000000001066_00402_33322_0000.E2
AT2_AR_2PURAL20011121_214929_000000001069_00028_34451_0000.E2
AT2_AST_BPSRAL20011121_214929_000000001069_00028_34451_0000.E2
AT2_MET_2PSRAL20011121_214929_000000001069_00028_34451_0000.E2
AT2_NR_2PURAL20011121_214929_000000001069_00028_34451_0000.E2
AT2_TOA_1PURAL20011121_214929_000000001069_00028_34451_0000.E2
AT2_AR_2PURAL20020123_232516_000000001070_00430_35354_0000.E2
AT2_AST_BPSRAL20020123_232516_000000001070_00430_35354_0000.E2
AT2_MET_2PSRAL20020123_232516_000000001070_00430_35354_0000.E2
AT2_NR_2PURAL20020123_232516_000000001070_00430_35354_0000.E2
AT2_TOA_1PURAL20020123_232516_000000001070_00430_35354_0000.E2
AT2_AR_2PURAL20020131_004544_000000001071_00030_35455_0000.E2
AT2_AST_BPSRAL20020131_004544_000000001071_00030_35455_0000.E2
AT2_MET_2PSRAL20020131_004544_000000001071_00030_35455_0000.E2
AT2_NR_2PURAL20020131_004544_000000001071_00030_35455_0000.E2



Products affected by invalid last latitudes <u>and</u> longitudes
AT2_TOA_1PURAL20020131_004544_000000001071_00030_35455_0000.E2
AT2_AR_2PURAL20020320_224904_000000001072_00229_36155_0000.E2
AT2_AST_BPSRAL20020320_224904_000000001072_00229_36155_0000.E2
AT2_MET_2PSRAL20020320_224904_000000001072_00229_36155_0000.E2
AT2_NR_2PURAL20020320_224904_000000001072_00229_36155_0000.E2
AT2_TOA_1PURAL20020320_224904_000000001072_00229_36155_0000.E2
AT2_AR_2PURAL20020411_004549_000000001073_00030_36457_0000.E2
AT2_AST_BPURAL20020411_004549_000000001073_00030_36457_0000.E2
AT2_MET_2PURAL20020411_004549_000000001073_00030_36457_0000.E2
AT2_NR_2PURAL20020411_004549_000000001073_00030_36457_0000.E2
AT2_TOA_1PURAL20020411_004549_000000001073_00030_36457_0000.E2
AT2_AR_2PURAL20020411_112624_000000001073_00036_36463_0000.E2
AT2_AST_BPURAL20020411_112624_000000001073_00036_36463_0000.E2
AT2_MET_2PURAL20020411_112624_000000001073_00036_36463_0000.E2
AT2_NR_2PURAL20020411_112624_000000001073_00036_36463_0000.E2
AT2_TOA_1PURAL20020411_112624_000000001073_00036_36463_0000.E2
AT2_AR_2PURAL20020602_001126_000000001074_00273_37201_0000.E2
AT2_AST_BPSRAL20020602_001126_000000001074_00273_37201_0000.E2
AT2_MET_2PSRAL20020602_001126_000000001074_00273_37201_0000.E2
AT2_NR_2PURAL20020602_001126_000000001074_00273_37201_0000.E2
AT2_TOA_1PURAL20020602_001126_000000001074_00273_37201_0000.E2
AT2_AR_2PURAL20021209_204716_000000001079_00500_39933_0000.E2
AT2_AST_BPSRAL20021209_204716_000000001079_00500_39933_0000.E2
AT2_MET_2PSRAL20021209_204716_000000001079_00500_39933_0000.E2
AT2_NR_2PURAL20021209_204716_000000001079_00500_39933_0000.E2
AT2_TOA_1PURAL20021209_204716_000000001079_00500_39933_0000.E2
AT2_AR_2PURAL20021229_001121_000000001080_00273_40207_0000.E2
AT2_AST_BPSRAL20021229_001121_000000001080_00273_40207_0000.E2
AT2_MET_2PSRAL20021229_001121_000000001080_00273_40207_0000.E2
AT2_NR_2PURAL20021229_001121_000000001080_00273_40207_0000.E2
AT2_TOA_1PURAL20021229_001121_000000001080_00273_40207_0000.E2
AT2_AR_2PURAL20030528_232529_000000001084_00430_42368_0000.E2
AT2_AST_BPSRAL20030528_232529_000000001084_00430_42368_0000.E2
AT2_MET_2PSRAL20030528_232529_000000001084_00430_42368_0000.E2
AT2_NR_2PURAL20030528_232529_000000001084_00430_42368_0000.E2
AT2_TOA_1PURAL20030528_232529_000000001084_00430_42368_0000.E2
AT2_AR_2PURAL20030614_114325_000000001085_00165_42604_0000.E2
AT2_AST_BPSRAL20030614_114325_000000001085_00165_42604_0000.E2
AT2_MET_2PSRAL20030614_114325_000000001085_00165_42604_0000.E2
AT2_NR_2PURAL20030614_114325_000000001085_00165_42604_0000.E2
AT2_TOA_1PURAL20030614_114325_000000001085_00165_42604_0000.E2

Table 8. Products affected by missing MPH stop time

Products affected by missing MPH stop time
AT1_AR_2PURAL19910822_215932_000000001010_00043_00527_0000.E1
AT1_AST_BPSRAL19910822_215932_000000001010_00043_00527_0000.E1
AT1_MET_2PSRAL19910822_215932_000000001010_00043_00527_0000.E1
AT1_NR_2PURAL19910822_215932_000000001010_00043_00527_0000.E1
AT1_TOA_1PURAL19910822_215932_000000001010_00043_00527_0000.E1



Products affected by missing MPH stop time
AT1_AR_2PURAL19920106_224009_000000002004_00029_02491_0000.E1
AT1_AST_BPSRAL19920106_224009_000000002004_00029_02491_0000.E1
AT1_MET_2PSRAL19920106_224009_000000002004_00029_02491_0000.E1
AT1_NR_2PURAL19920106_224009_000000002004_00029_02491_0000.E1
AT1_TOA_1PURAL19920106_224009_000000002004_00029_02491_0000.E1
AT1_AR_2PURAL19920308_181221_000000002025_00012_03377_0000.E1
AT1_MET_2PSRAL19920308_181221_000000002025_00012_03377_0000.E1
AT1_NR_2PURAL19920308_181221_000000002025_00012_03377_0000.E1
AT1_TOA_1PURAL19920308_181221_000000002025_00012_03377_0000.E1
AT1_AR_2PURAL19920317_145123_000000002028_00010_03504_0000.E1
AT1_MET_2PSRAL19920317_145123_000000002028_00010_03504_0000.E1
AT1_NR_2PURAL19920317_145123_000000002028_00010_03504_0000.E1
AT1_TOA_1PURAL19920317_145123_000000002028_00010_03504_0000.E1
AT1_AR_2PURAL19920318_205943_000000002028_00028_03522_0000.E1
AT1_MET_2PSRAL19920318_205943_000000002028_00028_03522_0000.E1
AT1_NR_2PURAL19920318_205943_000000002028_00028_03522_0000.E1
AT1_TOA_1PURAL19920318_205943_000000002028_00028_03522_0000.E1
AT1_AR_2PURAL19920322_084259_000000002029_00035_03572_0000.E1
AT1_MET_2PSRAL19920322_084259_000000002029_00035_03572_0000.E1
AT1_NR_2PURAL19920322_084259_000000002029_00035_03572_0000.E1
AT1_TOA_1PURAL19920322_084259_000000002029_00035_03572_0000.E1
AT1_AR_2PURAL19920323_030807_000000002030_00003_03583_0000.E1
AT1_MET_2PSRAL19920323_030807_000000002030_00003_03583_0000.E1
AT1_NR_2PURAL19920323_030807_000000002030_00003_03583_0000.E1
AT1_TOA_1PURAL19920323_030807_000000002030_00003_03583_0000.E1
AT1_AR_2PURAL19920324_105658_000000002030_00022_03602_0000.E1
AT1_MET_2PSRAL19920324_105658_000000002030_00022_03602_0000.E1
AT1_NR_2PURAL19920324_105658_000000002030_00022_03602_0000.E1
AT1_TOA_1PURAL19920324_105658_000000002030_00022_03602_0000.E1
AT1_AR_2PURAL19920518_215453_000000004002_00243_04396_0000.E1
AT1_AST_BPSRAL19920518_215453_000000004002_00243_04396_0000.E1
AT1_MET_2PSRAL19920518_215453_000000004002_00243_04396_0000.E1
AT1_NR_2PURAL19920518_215453_000000004002_00243_04396_0000.E1
AT1_TOA_1PURAL19920518_215453_000000004002_00243_04396_0000.E1
AT1_AR_2PURAL19921112_222516_000000004007_00286_06944_0000.E1
AT1_AST_BPSRAL19921112_222516_000000004007_00286_06944_0000.E1
AT1_MET_2PSRAL19921112_222516_000000004007_00286_06944_0000.E1
AT1_NR_2PURAL19921112_222516_000000004007_00286_06944_0000.E1
AT1_TOA_1PURAL19921112_222516_000000004007_00286_06944_0000.E1
AT1_AR_2PURAL19921119_214037_000000004007_00386_07044_0000.E1
AT1_AST_BPSRAL19921119_214037_000000004007_00386_07044_0000.E1
AT1_MET_2PSRAL19921119_214037_000000004007_00386_07044_0000.E1
AT1_NR_2PURAL19921119_214037_000000004007_00386_07044_0000.E1
AT1_TOA_1PURAL19921119_214037_000000004007_00386_07044_0000.E1
AT1_AR_2PURAL19930525_220332_000000004013_00057_09721_0000.E1
AT1_AST_BPSRAL19930525_220332_000000004013_00057_09721_0000.E1
AT1_MET_2PSRAL19930525_220332_000000004013_00057_09721_0000.E1
AT1_NR_2PURAL19930525_220332_000000004013_00057_09721_0000.E1
AT1_TOA_1PURAL19930525_220332_000000004013_00057_09721_0000.E1
AT1_AR_2PURAL19940514_160437_000000006999_99999_14788_0000.E1
AT1_AST_BPSRAL19940514_160437_000000006999_99999_14788_0000.E1



Products affected by missing MPH stop time
AT1_MET_2PSRAL19940514_160437_000000006999_99999_14788_0000.E1
AT1_NR_2PURAL19940514_160437_000000006999_99999_14788_0000.E1
AT1_TOA_1PURAL19940514_160437_000000006999_99999_14788_0000.E1
AT1_AR_2PURAL19950103_190741_000000007002_01347_18148_0000.E1
AT1_AST_BPSRAL19950103_190741_000000007002_01347_18148_0000.E1
AT1_MET_2PSRAL19950103_190741_000000007002_01347_18148_0000.E1
AT1_NR_2PURAL19950103_190741_000000007002_01347_18148_0000.E1
AT1_TOA_1PURAL19950103_190741_000000007002_01347_18148_0000.E1
AT1_AR_2PURAL19950305_000131_000000007002_02211_19012_0000.E1
AT1_AST_BPSRAL19950305_000131_000000007002_02211_19012_0000.E1
AT1_MET_2PSRAL19950305_000131_000000007002_02211_19012_0000.E1
AT1_NR_2PURAL19950305_000131_000000007002_02211_19012_0000.E1
AT1_TOA_1PURAL19950305_000131_000000007002_02211_19012_0000.E1
AT1_AR_2PURAL19950419_203434_000000008002_00142_19669_0000.E1
AT1_AST_BPSRAL19950419_203434_000000008002_00142_19669_0000.E1
AT1_MET_2PSRAL19950419_203434_000000008002_00142_19669_0000.E1
AT1_NR_2PURAL19950419_203434_000000008002_00142_19669_0000.E1
AT1_TOA_1PURAL19950419_203434_000000008002_00142_19669_0000.E1
AT1_AR_2PURAL19960118_083856_000000008010_00049_23584_0000.E1
AT1_AST_BPSRAL19960118_083856_000000008010_00049_23584_0000.E1
AT1_MET_2PSRAL19960118_083856_000000008010_00049_23584_0000.E1
AT1_NR_2PURAL19960118_083856_000000008010_00049_23584_0000.E1
AT1_TOA_1PURAL19960118_083856_000000008010_00049_23584_0000.E1
AT1_AR_2PURAL19960314_073834_000000008011_00349_24385_0000.E1
AT1_AST_BPSRAL19960314_073834_000000008011_00349_24385_0000.E1
AT1_MET_2PSRAL19960314_073834_000000008011_00349_24385_0000.E1
AT1_NR_2PURAL19960314_073834_000000008011_00349_24385_0000.E1
AT1_TOA_1PURAL19960314_073834_000000008011_00349_24385_0000.E1
AT1_AR_2PURAL19960317_060343_000000008011_00391_24427_0000.E1
AT1_AST_BPSRAL19960317_060343_000000008011_00391_24427_0000.E1
AT1_MET_2PSRAL19960317_060343_000000008011_00391_24427_0000.E1
AT1_NR_2PURAL19960317_060343_000000008011_00391_24427_0000.E1
AT1_TOA_1PURAL19960317_060343_000000008011_00391_24427_0000.E1
AT2_AR_2PURAL19951223_100555_000000001007_00164_03525_0000.E2
AT2_AST_BPSRAL19951223_100555_000000001007_00164_03525_0000.E2
AT2_MET_2PSRAL19951223_100555_000000001007_00164_03525_0000.E2
AT2_NR_2PURAL19951223_100555_000000001007_00164_03525_0000.E2
AT2_TOA_1PURAL19951223_100555_000000001007_00164_03525_0000.E2
AT2_AR_2PURAL19951224_111404_000000001007_00179_03540_0000.E2
AT2_AST_BPSRAL19951224_111404_000000001007_00179_03540_0000.E2
AT2_MET_2PSRAL19951224_111404_000000001007_00179_03540_0000.E2
AT2_NR_2PURAL19951224_111404_000000001007_00179_03540_0000.E2
AT2_TOA_1PURAL19951224_111404_000000001007_00179_03540_0000.E2
AT2_AR_2PURAL19970215_113830_000000001019_00165_09538_0000.E2
AT2_AST_BPSRAL19970215_113830_000000001019_00165_09538_0000.E2
AT2_MET_2PSRAL19970215_113830_000000001019_00165_09538_0000.E2
AT2_NR_2PURAL19970215_113830_000000001019_00165_09538_0000.E2
AT2_TOA_1PURAL19970215_113830_000000001019_00165_09538_0000.E2
AT2_AR_2PURAL19981118_173231_000000001037_00326_18717_0000.E2
AT2_AST_BPSRAL19981118_173231_000000001037_00326_18717_0000.E2
AT2_MET_2PSRAL19981118_173231_000000001037_00326_18717_0000.E2



Products affected by missing MPH stop time
AT2_NR_2PURAL19981118_173231_000000001037_00326_18717_0000.E2
AT2_TOA_1PURAL19981118_173231_000000001037_00326_18717_0000.E2
AT2_AR_2PURAL19981119_032735_000000001037_00332_18723_0000.E2
AT2_AST_BPSRAL19981119_032735_000000001037_00332_18723_0000.E2
AT2_MET_2PSRAL19981119_032735_000000001037_00332_18723_0000.E2
AT2_NR_2PURAL19981119_032735_000000001037_00332_18723_0000.E2
AT2_TOA_1PURAL19981119_032735_000000001037_00332_18723_0000.E2
AT2_AR_2PURAL19990503_014205_000000001042_00188_21084_0000.E2
AT2_AST_BPSRAL19990503_014205_000000001042_00188_21084_0000.E2
AT2_MET_2PSRAL19990503_014205_000000001042_00188_21084_0000.E2
AT2_NR_2PURAL19990503_014205_000000001042_00188_21084_0000.E2
AT2_TOA_1PURAL19990503_014205_000000001042_00188_21084_0000.E2
AT2_AR_2PURAL20000705_205136_000000001054_00328_27236_0000.E2
AT2_AST_BPURAL20000705_205136_000000001054_00328_27236_0000.E2
AT2_MET_2PURAL20000705_205136_000000001054_00328_27236_0000.E2
AT2_NR_2PURAL20000705_205136_000000001054_00328_27236_0000.E2
AT2_TOA_1PURAL20000705_205136_000000001054_00328_27236_0000.E2
AT2_AR_2PURAL20000706_032745_000000001054_00332_27240_0000.E2
AT2_AST_BPURAL20000706_032745_000000001054_00332_27240_0000.E2
AT2_MET_2PURAL20000706_032745_000000001054_00332_27240_0000.E2
AT2_NR_2PURAL20000706_032745_000000001054_00332_27240_0000.E2
AT2_TOA_1PURAL20000706_032745_000000001054_00332_27240_0000.E2
AT2_AR_2PURAL20000711_092343_000000001054_00407_27315_0000.E2
AT2_AST_BPURAL20000711_092343_000000001054_00407_27315_0000.E2
AT2_MET_2PURAL20000711_092343_000000001054_00407_27315_0000.E2
AT2_NR_2PURAL20000711_092343_000000001054_00407_27315_0000.E2
AT2_TOA_1PURAL20000711_092343_000000001054_00407_27315_0000.E2
AT2_AR_2PURAL20010520_145757_000000001063_00382_31799_0000.E2
AT2_AST_BPURAL20010520_145757_000000001063_00382_31799_0000.E2
AT2_MET_2PURAL20010520_145757_000000001063_00382_31799_0000.E2
AT2_NR_2PURAL20010520_145757_000000001063_00382_31799_0000.E2
AT2_TOA_1PURAL20010520_145757_000000001063_00382_31799_0000.E2
AT2_AR_2PURAL20010904_004105_000000001066_00402_33322_0000.E2
AT2_AST_BPSRAL20010904_004105_000000001066_00402_33322_0000.E2
AT2_MET_2PSRAL20010904_004105_000000001066_00402_33322_0000.E2
AT2_NR_2PURAL20010904_004105_000000001066_00402_33322_0000.E2
AT2_TOA_1PURAL20010904_004105_000000001066_00402_33322_0000.E2

Table 9. Products affected by MPH/SPH stop time disagreement

Products affected by MPH/SPH stop time disagreement
AT1_AR_2PURAL19920301_034136_000000002022_00032_03268_0000.E1
AT1_MET_2PSRAL19920301_034136_000000002022_00032_03268_0000.E1
AT1_NR_2PURAL19920301_034136_000000002022_00032_03268_0000.E1
AT1_TOA_1PURAL19920301_034136_000000002022_00032_03268_0000.E1
AT1_AR_2PURAL19921208_081837_000000004008_00149_07308_0000.E1
AT1_AST_BPSRAL19921208_081837_000000004008_00149_07308_0000.E1
AT1_MET_2PSRAL19921208_081837_000000004008_00149_07308_0000.E1
AT1_NR_2PURAL19921208_081837_000000004008_00149_07308_0000.E1
AT1_TOA_1PURAL19921208_081837_000000004008_00149_07308_0000.E1



Products affected by MPH/SPH stop time disagreement
AT1_AR_2PURAL19950527_135759_000000008003_00181_20209_0000.E1
AT1_AST_BPSRAL19950527_135759_000000008003_00181_20209_0000.E1
AT1_MET_2PSRAL19950527_135759_000000008003_00181_20209_0000.E1
AT1_NR_2PURAL19950527_135759_000000008003_00181_20209_0000.E1
AT1_TOA_1PURAL19950527_135759_000000008003_00181_20209_0000.E1
AT2_AR_2PURAL19951126_101643_00000001006_00279_03139_0000.E2
AT2_AST_BPSRAL19951126_101643_00000001006_00279_03139_0000.E2
AT2_MET_2PSRAL19951126_101643_00000001006_00279_03139_0000.E2
AT2_NR_2PURAL19951126_101643_00000001006_00279_03139_0000.E2
AT2_TOA_1PURAL19951126_101643_00000001006_00279_03139_0000.E2
AT2_AR_2PURAL19951222_220734_00000001007_00157_03518_0000.E2
AT2_AST_BPSRAL19951222_220734_00000001007_00157_03518_0000.E2
AT2_MET_2PSRAL19951222_220734_00000001007_00157_03518_0000.E2
AT2_NR_2PURAL19951222_220734_00000001007_00157_03518_0000.E2
AT2_TOA_1PURAL19951222_220734_00000001007_00157_03518_0000.E2
AT2_AR_2PURAL19951223_010454_00000001007_00159_03520_0000.E2
AT2_AST_BPSRAL19951223_010454_00000001007_00159_03520_0000.E2
AT2_MET_2PSRAL19951223_010454_00000001007_00159_03520_0000.E2
AT2_NR_2PURAL19951223_010454_00000001007_00159_03520_0000.E2
AT2_TOA_1PURAL19951223_010454_00000001007_00159_03520_0000.E2
AT2_AR_2PURAL19951224_224437_00000001007_00186_03547_0000.E2
AT2_AST_BPSRAL19951224_224437_00000001007_00186_03547_0000.E2
AT2_MET_2PSRAL19951224_224437_00000001007_00186_03547_0000.E2
AT2_NR_2PURAL19951224_224437_00000001007_00186_03547_0000.E2
AT2_TOA_1PURAL19951224_224437_00000001007_00186_03547_0000.E2
AT2_AR_2PURAL19951225_020225_00000001007_00188_03549_0000.E2
AT2_AST_BPSRAL19951225_020225_00000001007_00188_03549_0000.E2
AT2_MET_2PSRAL19951225_020225_00000001007_00188_03549_0000.E2
AT2_NR_2PURAL19951225_020225_00000001007_00188_03549_0000.E2
AT2_TOA_1PURAL19951225_020225_00000001007_00188_03549_0000.E2
AT2_AR_2PURAL19951225_221314_00000001007_00200_03561_0000.E2
AT2_AST_BPSRAL19951225_221314_00000001007_00200_03561_0000.E2
AT2_MET_2PSRAL19951225_221314_00000001007_00200_03561_0000.E2
AT2_NR_2PURAL19951225_221314_00000001007_00200_03561_0000.E2
AT2_TOA_1PURAL19951225_221314_00000001007_00200_03561_0000.E2
AT2_AR_2PURAL19951227_004057_00000001007_00216_03577_0000.E2
AT2_AST_BPSRAL19951227_004057_00000001007_00216_03577_0000.E2
AT2_MET_2PSRAL19951227_004057_00000001007_00216_03577_0000.E2
AT2_NR_2PURAL19951227_004057_00000001007_00216_03577_0000.E2
AT2_TOA_1PURAL19951227_004057_00000001007_00216_03577_0000.E2
AT2_AR_2PURAL19951228_033642_00000001007_00232_03593_0000.E2
AT2_AST_BPSRAL19951228_033642_00000001007_00232_03593_0000.E2
AT2_MET_2PSRAL19951228_033642_00000001007_00232_03593_0000.E2
AT2_NR_2PURAL19951228_033642_00000001007_00232_03593_0000.E2
AT2_TOA_1PURAL19951228_033642_00000001007_00232_03593_0000.E2
AT2_AR_2PURAL19951229_013600_00000001007_00245_03606_0000.E2
AT2_AST_BPSRAL19951229_013600_00000001007_00245_03606_0000.E2
AT2_MET_2PSRAL19951229_013600_00000001007_00245_03606_0000.E2
AT2_NR_2PURAL19951229_013600_00000001007_00245_03606_0000.E2
AT2_TOA_1PURAL19951229_013600_00000001007_00245_03606_0000.E2
AT2_AR_2PURAL19951229_214732_00000001007_00257_03618_0000.E2



Products affected by MPH/SPH stop time disagreement
AT2_AST_BPSRAL19951229_214732_000000001007_00257_03618_0000.E2
AT2_MET_2PSRAL19951229_214732_000000001007_00257_03618_0000.E2
AT2_NR_2PURAL19951229_214732_000000001007_00257_03618_0000.E2
AT2_TOA_1PURAL19951229_214732_000000001007_00257_03618_0000.E2
AT2_AR_2PURAL19951231_001747_000000001007_00273_03634_0000.E2
AT2_AST_BPSRAL19951231_001747_000000001007_00273_03634_0000.E2
AT2_MET_2PSRAL19951231_001747_000000001007_00273_03634_0000.E2
AT2_NR_2PURAL19951231_001747_000000001007_00273_03634_0000.E2
AT2_TOA_1PURAL19951231_001747_000000001007_00273_03634_0000.E2
AT2_AR_2PURAL19980606_221552_000000001032_00472_16358_0000.E2
AT2_AST_BPSRAL19980606_221552_000000001032_00472_16358_0000.E2
AT2_MET_2PSRAL19980606_221552_000000001032_00472_16358_0000.E2
AT2_NR_2PURAL19980606_221552_000000001032_00472_16358_0000.E2
AT2_TOA_1PURAL19980606_221552_000000001032_00472_16358_0000.E2
AT2_AR_2PURAL19980607_044146_000000001032_00476_16362_0000.E2
AT2_AST_BPSRAL19980607_044146_000000001032_00476_16362_0000.E2
AT2_MET_2PSRAL19980607_044146_000000001032_00476_16362_0000.E2
AT2_NR_2PURAL19980607_044146_000000001032_00476_16362_0000.E2
AT2_TOA_1PURAL19980607_044146_000000001032_00476_16362_0000.E2
AT2_AR_2PURAL19980607_231513_000000001032_00487_16373_0000.E2
AT2_AST_BPSRAL19980607_231513_000000001032_00487_16373_0000.E2
AT2_NR_2PURAL19980607_231513_000000001032_00487_16373_0000.E2
AT2_TOA_1PURAL19980607_231513_000000001032_00487_16373_0000.E2
AT2_AR_2PURAL20000705_173237_000000001054_00326_27234_0000.E2
AT2_AST_BPURAL20000705_173237_000000001054_00326_27234_0000.E2
AT2_MET_2PURAL20000705_173237_000000001054_00326_27234_0000.E2
AT2_NR_2PURAL20000705_173237_000000001054_00326_27234_0000.E2
AT2_TOA_1PURAL20000705_173237_000000001054_00326_27234_0000.E2
AT2_AR_2PURAL20010527_181355_000000001063_00484_31901_0000.E2
AT2_AST_BPURAL20010527_181355_000000001063_00484_31901_0000.E2
AT2_MET_2PURAL20010527_181355_000000001063_00484_31901_0000.E2
AT2_NR_2PURAL20010527_181355_000000001063_00484_31901_0000.E2
AT2_TOA_1PURAL20010527_181355_000000001063_00484_31901_0000.E2
AT2_AR_2PURAL20010528_141917_000000001063_00496_31913_0000.E2
AT2_AST_BPURAL20010528_141917_000000001063_00496_31913_0000.E2
AT2_MET_2PURAL20010528_141917_000000001063_00496_31913_0000.E2
AT2_NR_2PURAL20010528_141917_000000001063_00496_31913_0000.E2
AT2_TOA_1PURAL20010528_141917_000000001063_00496_31913_0000.E2
AT2_AR_2PURAL20021213_170015_000000001080_00054_39988_0000.E2
AT2_AST_BPSRAL20021213_170015_000000001080_00054_39988_0000.E2
AT2_MET_2PSRAL20021213_170015_000000001080_00054_39988_0000.E2
AT2_NR_2PURAL20021213_170015_000000001080_00054_39988_0000.E2
AT2_TOA_1PURAL20021213_170015_000000001080_00054_39988_0000.E2
AT2_AR_2PURAL20030406_003122_000000001083_00173_41610_0000.E2
AT2_AST_BPSRAL20030406_003122_000000001083_00173_41610_0000.E2
AT2_MET_2PSRAL20030406_003122_000000001083_00173_41610_0000.E2
AT2_NR_2PURAL20030406_003122_000000001083_00173_41610_0000.E2
AT2_TOA_1PURAL20030406_003122_000000001083_00173_41610_0000.E2
AT2_AR_2PURAL20030430_075955_000000001084_00020_41958_0000.E2
AT2_AST_BPSRAL20030430_075955_000000001084_00020_41958_0000.E2
AT2_MET_2PSRAL20030430_075955_000000001084_00020_41958_0000.E2

Products affected by MPH/SPH stop time disagreement
AT2_NR_2PURAL20030430_075955_000000001084_00020_41958_0000.E2
AT2_TOA_1PURAL20030430_075955_000000001084_00020_41958_0000.E2
AT2_AR_2PURAL20030511_053319_000000001084_00176_42114_0000.E2
AT2_AST_BPSRAL20030511_053319_000000001084_00176_42114_0000.E2
AT2_MET_2PSRAL20030511_053319_000000001084_00176_42114_0000.E2
AT2_NR_2PURAL20030511_053319_000000001084_00176_42114_0000.E2
AT2_TOA_1PURAL20030511_053319_000000001084_00176_42114_0000.E2

Table 10. Product affected by missing SPH start and stop times

Product affected by missing SPH start and stop times
AT1_TOA_1PURAL19941225_160307_000000007002_01216_18017_0000.E1

Table 11. Months affected by cold SSTs (ATSR-1)

Months affected by cold SSTs mainly in regions of persistent marine stratocumulus (ATSR-1)											
									Oct-91	Nov-91	Dec-91
						Jul-92	Aug-92	Sep-92	Oct-92	Nov-92	
	Feb-93		Apr-93		Jun-93	Jul-93	Aug-93		Oct-93		Dec-93
Jan-94	Feb-94	Mar-94	Apr-94	May-94	Jun-94	Jul-94	Aug-94	Sep-94	Oct-94	Nov-94	Dec-94
	Feb-95	Mar-95	Apr-95	May-95	Jun-95	Jul-95	Aug-95	Sep-95	Oct-95	Nov-95	Dec-95
	Feb-96	Mar-96	Apr-96								
						Jul-97			Oct-97		

Table 12. Months affected by cold SSTs off the coast of Vietnam and in coastal regions of the Gulf of Mexico (ATSR-2)

Months affected by cold SSTs off the coast of Vietnam and in coastal regions of the Gulf of Mexico (ATSR-2)									
Nov-95	Feb-97	Feb-98	Jan-99	Feb-00	Feb-01	Jan-02	Mar-02	Nov-02	