



Status of SYN L2 Products

PROBA-V QWG
28 October 2020

C. Henocq, ACRI-ST

Disclaimer

The work performed in the frame of this contract is carried out with funding by the European Union. The views expressed herein can in no way be taken to reflect the official opinion of either the European Union or the European Space Agency.





Current status of SYN L2 and VGT-like products

1. Status and modifications since last QWG
2. Planned evolutions / SPR corrections on VGT-like branch
3. Status of the SYN AOD product



Current status of SYN/VGT-like products

Last QWG (June 2020), delivery of SYN L2 IPF 2.66 /1.38 including :

- Correction of minor issues : rectangular patterns in T550, negative AOD, ..



Current status of SYN/VGT-like products

Last QWG (June 2020), delivery of SYN L2 IPF 2.66 /1.38 including :

- Correction of minor issues : rectangular patterns in T550, negative AOD, ..

Modification at PDGS level:

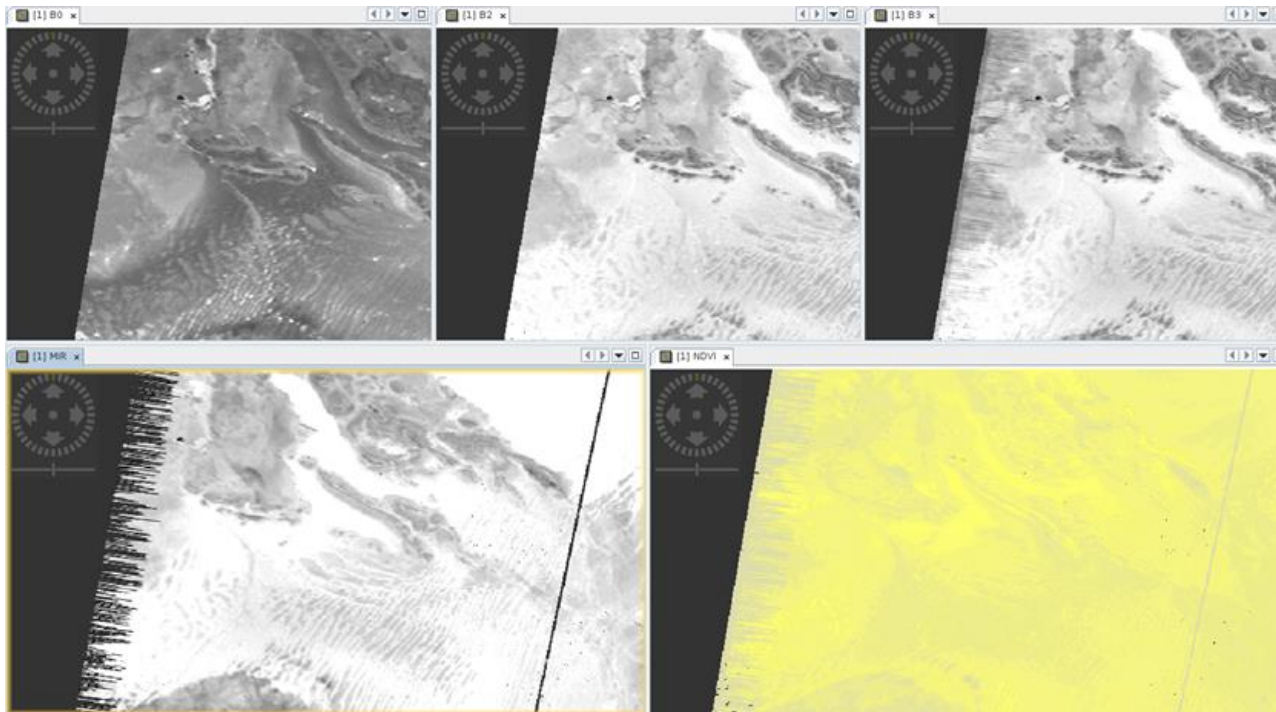
- Modification of the VGT-S10 10-days period to define 3 “fixed” products per month (since 21/05/2020)
 - From 1 to 10 of the month
 - From 11 to 20 of the month
 - From 21 to the end of the month
- Modification of the VGT-S like time period
 - For VGT-S10 : S3A_SY_2_V10____20200911T000000_20200920T235959 (since 21/07/2020)
 - For VGT-S1 : S3A_SY_2_VG1____20200924T000000_20200924T235959 (since 24/09/2020 for S3A and S3B)



Planned evolution and correction

Checking different issues raised previously :

- ❖ Edge artefact on VGT-like products
- ❖ Along-track stripping on VGT-like products



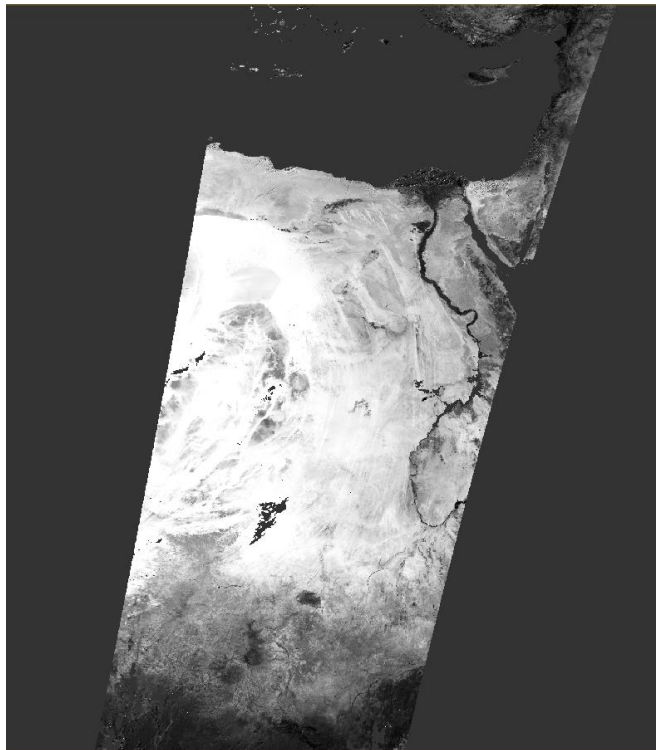


Planned evolution and correction

Checking different issues raised previously :

- ❖ Edge artefact on VGT-like products
- ❖ Along-track stripping on VGT-like products
 - » Issue not spotted in current operational issues

S3A_SY_2_VGK___20201021T080027_20201021T084444_[..]

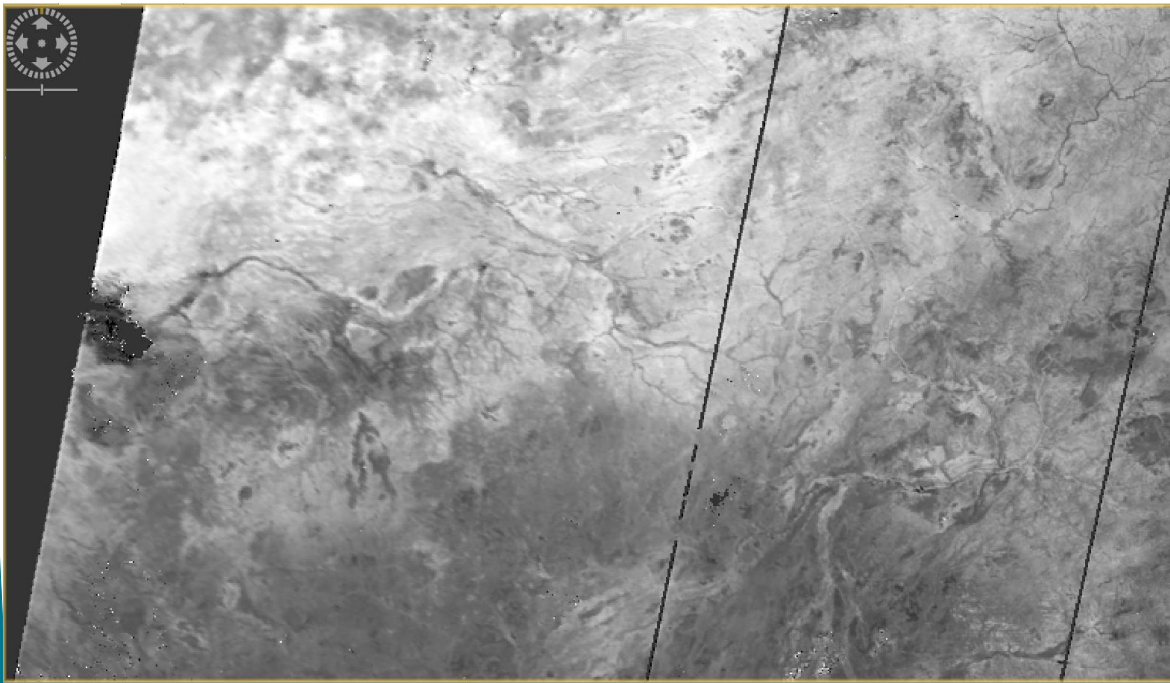




Planned evolution and correction

Checking different issues raised previously :

- ❖ Edge artefact on VGT-like products
- ❖ Along-track stripping on VGT-like products
 - » Issue not spotted in current operational issues
 - » Reprocessing with latest IPF version → edge artefacts no longer visible
 - camera interfaces still visible and due to one missing column in projected SLSTR dataset (SYN L1 issue – border misregistration effect)





Planned evolution and correction

Evolutions and corrections :

1. Computation and handling of the NDVI
2. Including a specific land/sea classification module in VGT-Like product
3. Including cloud shadows detection (IDEPIX V7)
4. Applying SLSTR Calibration factors



Validation activities on SYN L2 products

Evaluation of SYN AOD :

- Validation activity on S3MPC (4 months of reprocessing over 2019)
- Start of the validation phase on the LAW project



THANK YOU FOR YOUR ATTENTION