

### Cloud-free collections key for land monitoring

14 September 2023

Satellite imagery is a crucially important tool for monitoring the land, but cloud cover can often block parts of Earth's surface from view, limiting subsequent analyses. To address this challenge, ESA disseminates collections composed of images from different time points to deliver a mostly unobstructed view of the planet.

In this summary article, Earth Online highlights key cloud-free collections and how to access them.

[READ MORE](#)



### ESA Earth observation archives preserved in Arctic vault

13 September 2023

ESA has added to its store of Earth observation records housed in a secure vault in the Norwegian Arctic, ensuring that knowledge from a crucial chapter in European remote sensing history is safeguarded for future generations.

[READ MORE](#)



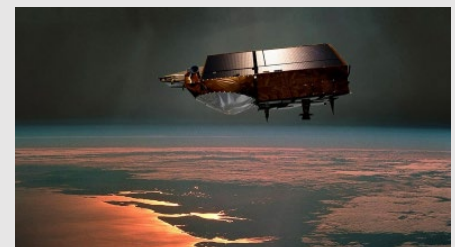
## LATEST DATA NEWS

### Global glacier mass change data now available from CryoSat

20 September 2023

Measuring glacier mass changes from space is more accurate and comprehensive thanks to the CryoTEMPO-EOLIS CryoSat swath data products, which now cover glaciers worldwide.

[READ MORE](#)



### New release of TII Raw and Corrected Imagery Spectra dataset

14 September 2023

An updated version of the TII Raw and Corrected Imagery / Spectra dataset (TRACIS version 0201) at low resolution (TISL1B) and high resolution (TISH1B) is available for the three Swarm spacecraft.

[READ MORE](#)

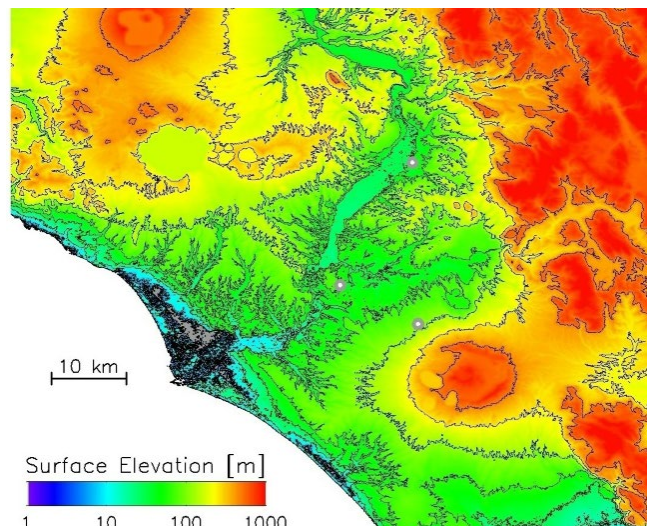


### Highlight on:

## Rome supersite helps validate atmospheric space data

21 September 2023

In the sprawling, urban area of Rome, where atmospheric composition is impacted by complex coastal weather and pollution, ESA supports a powerful observatory spread across several locations. Multiple ground based active and passive instruments operate in synergy to create validated satellite atmospheric products, ranging from aerosol and wind measurements, to trace gas concentrations.



As the world's population continues to grow, the number of urban inhabitants is expected to reach almost 70 percent of our population by 2050, according to the United Nations.

Tracking atmospheric composition in urban areas is challenging as urban infrastructure, such as high-rise buildings and roads, add complexity to atmospheric processes by limiting ventilation and pollution dispersion in the atmosphere closest to the ground - the so-called urban boundary layer.

The Boundary-layer Air Quality-analysis Using Network of INstruments (BAQUNIN) supersite aims to support the validation and calibration of satellite data products in urban areas, as well as providing long-term, high-resolution datasets on the urban environment.

[READ MORE](#)

## UPCOMING EVENTS



13/11/2023

**EarthCARE pre-launch Science and Validation Workshop**  
Registration deadline on 15 October

[READ MORE](#)



27/11/2023

**VH-RODA Workshop**  
Abstract submission deadline on 16 October

[READ MORE](#)



27/11/2023

**The 5th Space for Hydrology Workshop**  
Registration deadline on 29 October

[READ MORE](#)



### Focus on: Data access

## How to access ResourceSat-1 data

ResourceSat-1 (also known as IRS-P6) is part of ISRO's Indian Remote-Sensing Satellite (IRS) series. The satellite provided data continuity for the IRS-1C and 1D missions, but with more advanced versions of the instruments.

Launched in October 2003, ResourceSat-1 acquired data that supported land and water resource management for almost 10 years, ending in September 2013.

The satellite carried three instruments: the Linear Imaging Self-Scanner (LISS-IV), which acquired high resolution imagery; the Linear Imaging Self-Scanner (LISS-III), which acquired medium resolution imagery; and the Advanced Wide Field Sensor (AWiFS), which acquired 740 km swath width imagery.

ResourceSat-1 is part of ESA's Third Party Missions programme, in which ESA has an agreement to promote the availability of data products from the mission.

Products from the 10 year mission archive are available for all three instruments. Access must be requested via a Project Proposal, which describes the intended scientific use of the data.

In addition to the archive, ESA also offer another data collection that contains ResourceSat-1 imagery from 2005 to 2007. The Image 2006 European Coverage collection contains cloud-free images over 38 European countries, using data from SPOT-4, 5, and LISS-III on ResourceSat-1.



*ResourceSat-1 image of Cyprus. Copyright: ISRO*

[Learn more about the ResourceSat-1 collections](#)

### In this Issue

Cloud-free collections key for land monitoring

[READ MORE](#)

Global glacier mass change data now available from CryoSat

[READ MORE](#)

ESA Earth observation archives preserved in Arctic vault

[READ MORE](#)

Rome supersite helps validate atmospheric space data

[READ MORE](#)

### Discover more

[Data Access](#)  
[Missions](#)  
[News](#)  
[Events](#)  
[Tools](#)

