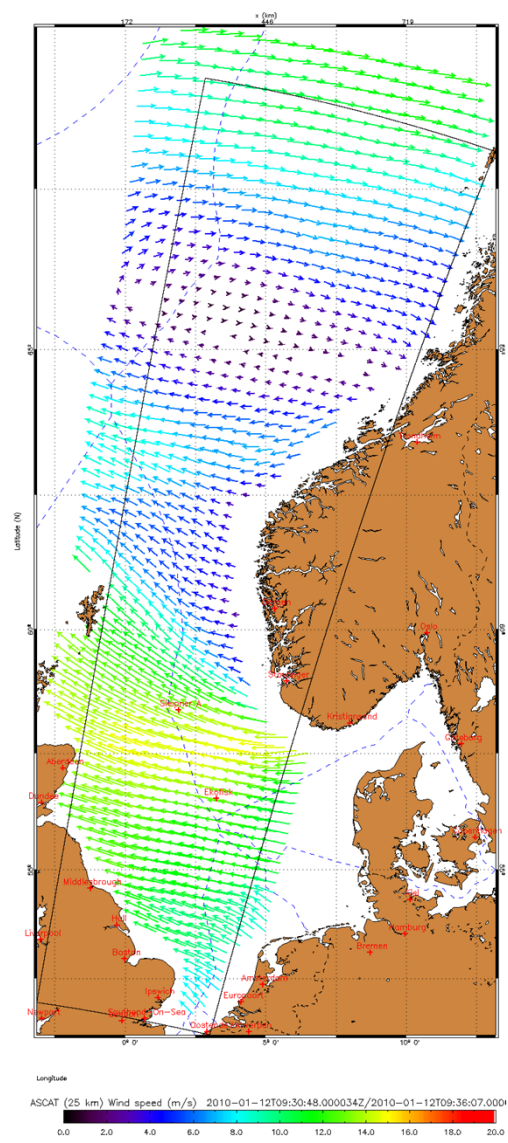
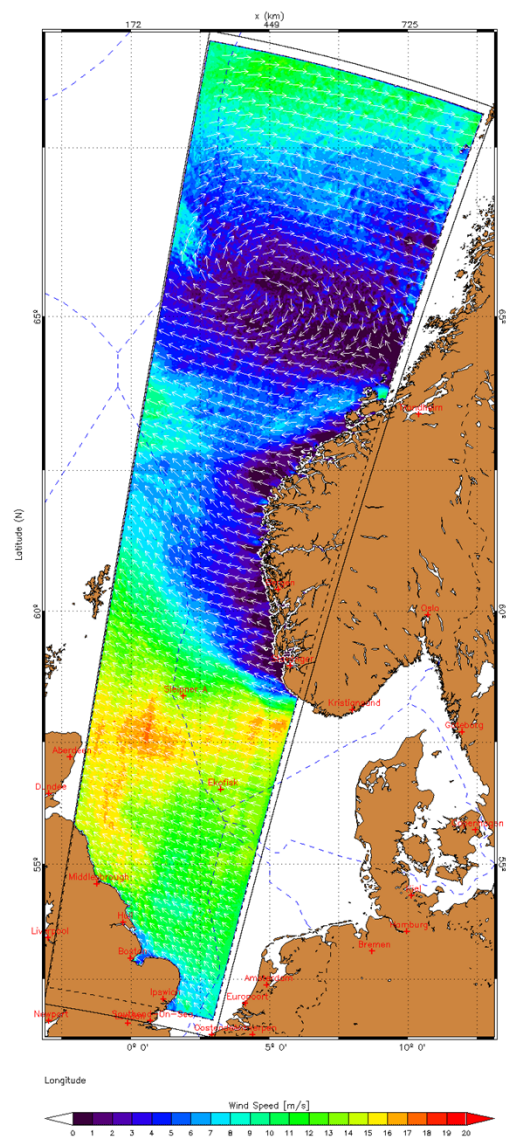
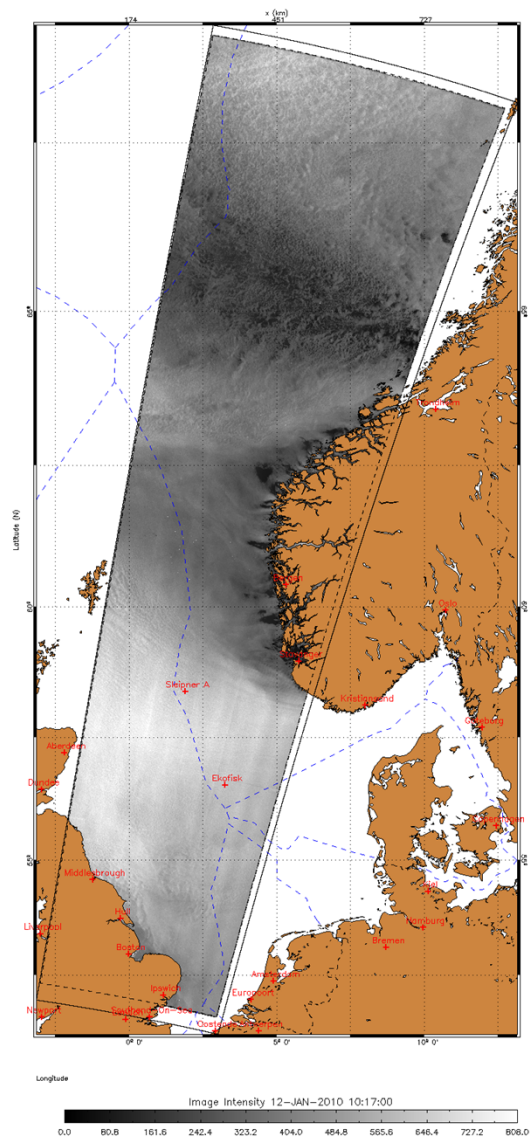


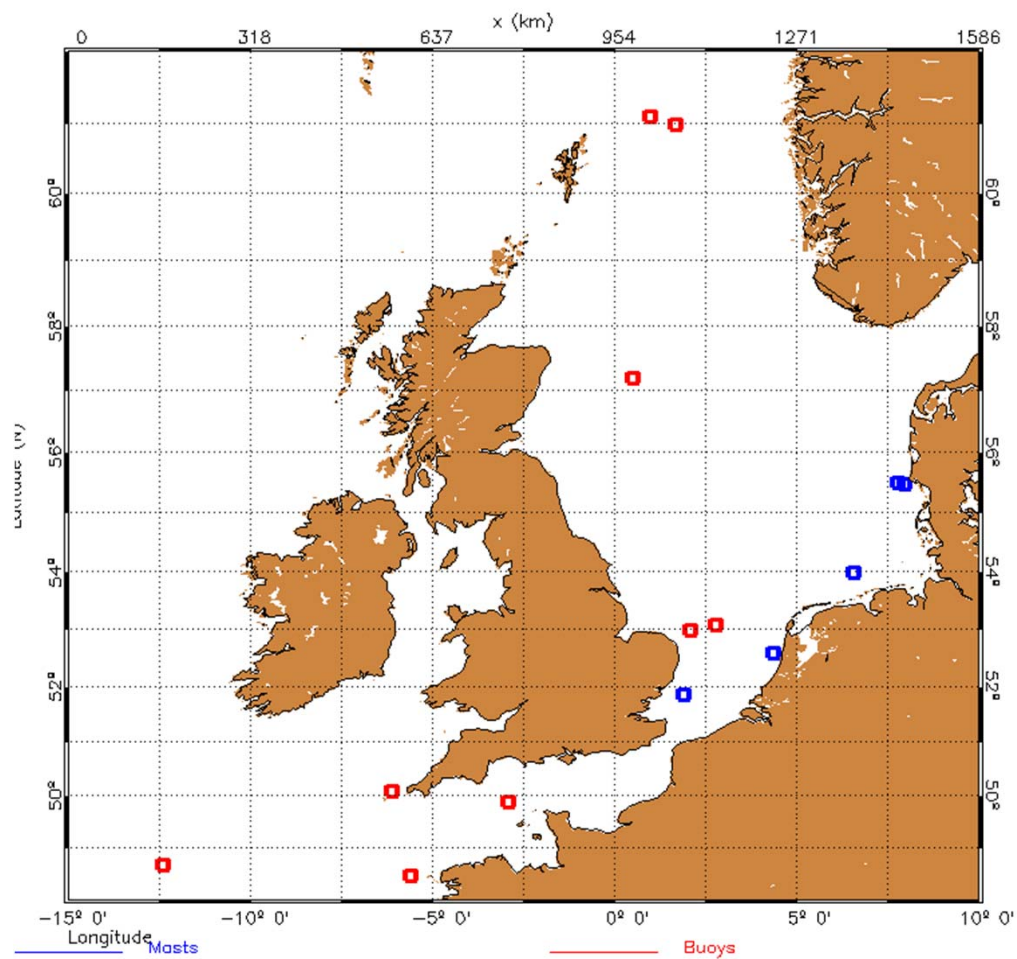


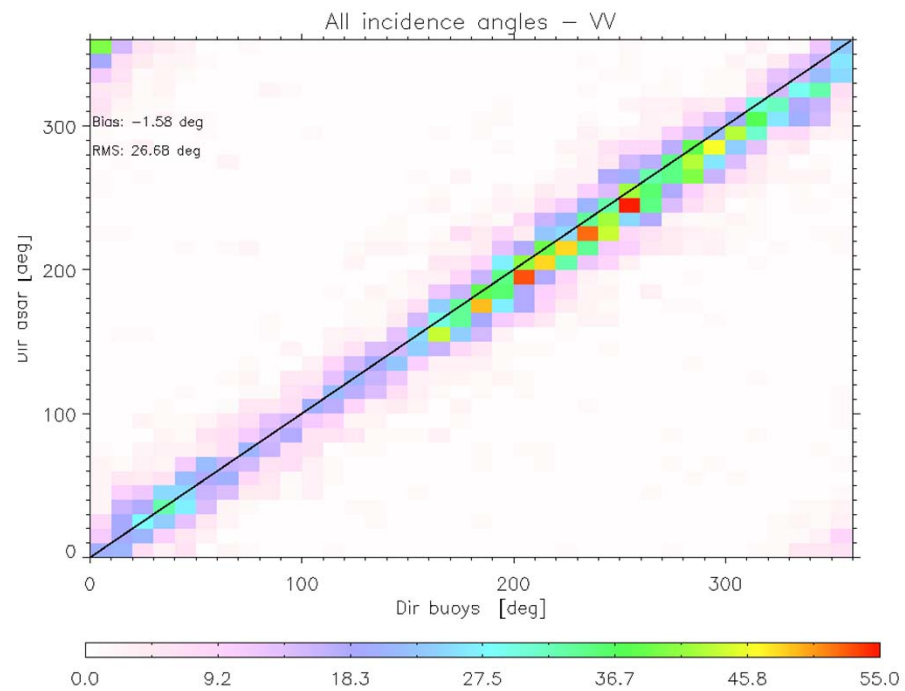
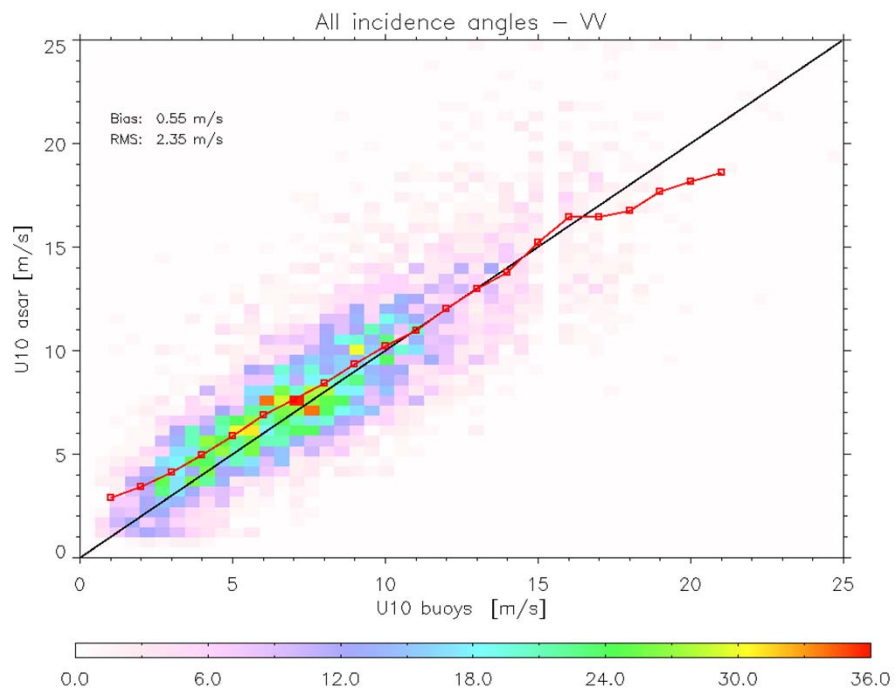
title

Alexis Mouche, Fabrice Collard, CLS

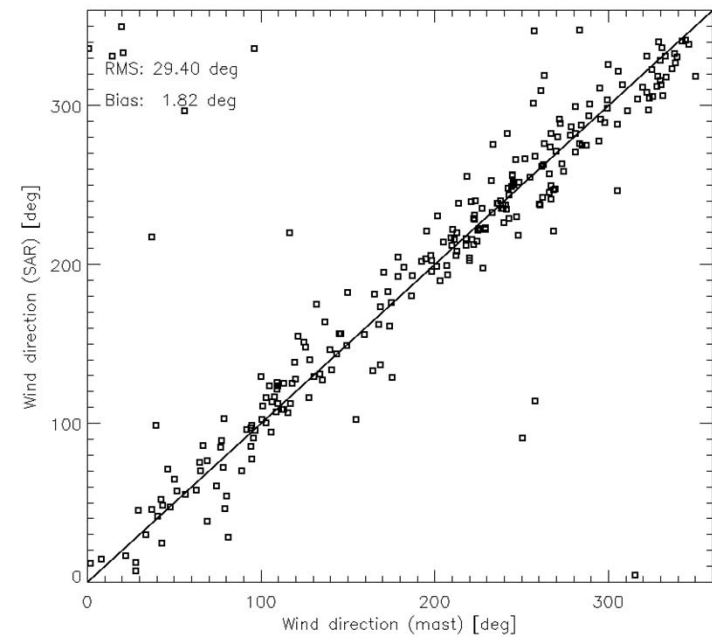
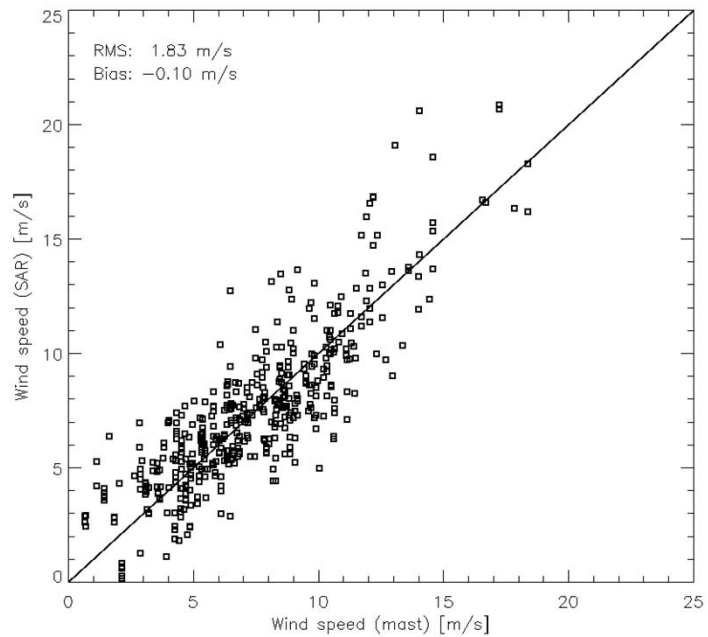
Bertrand Chapron, IFREMER



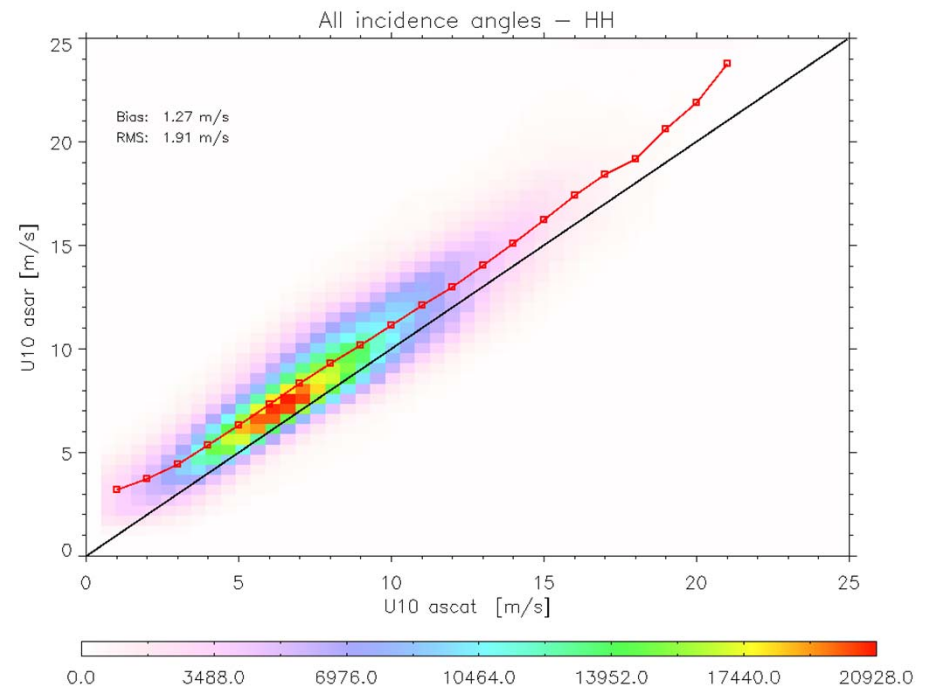
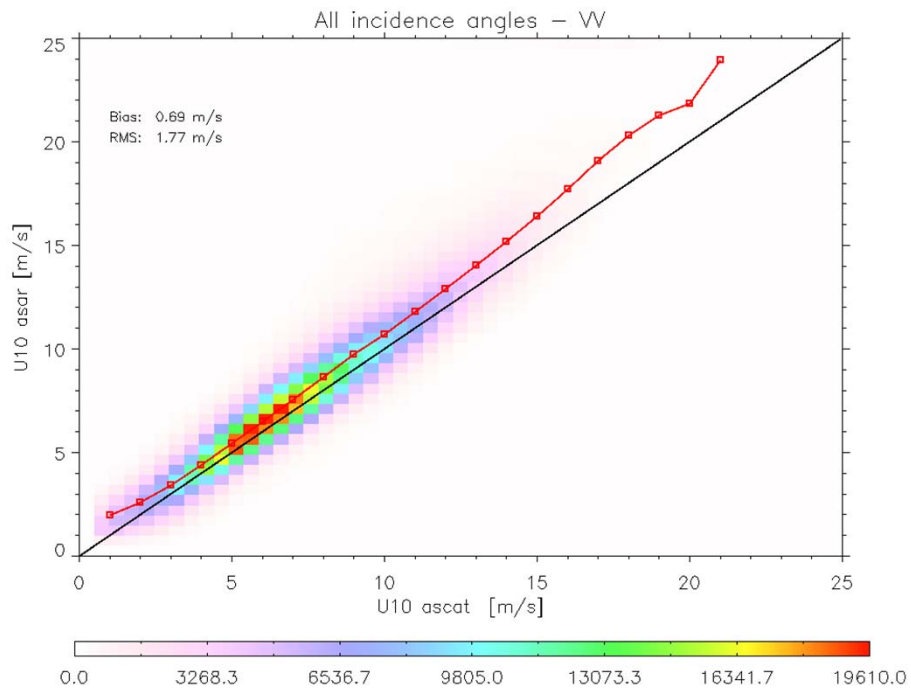




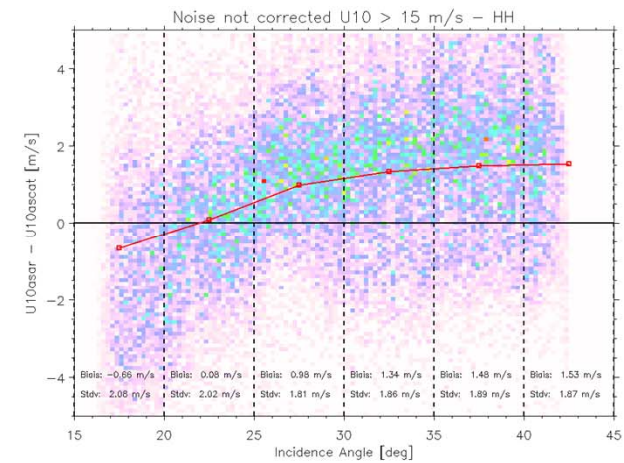
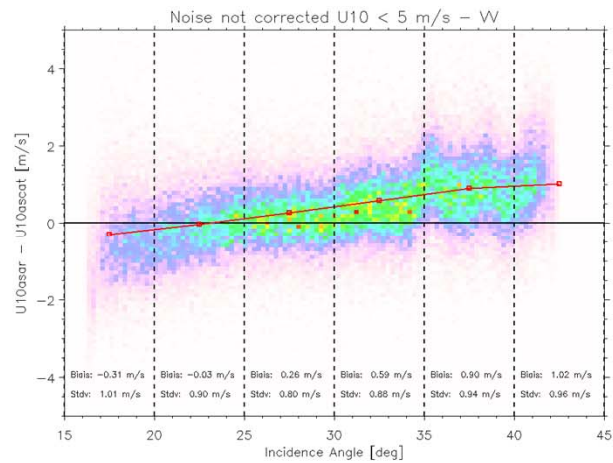
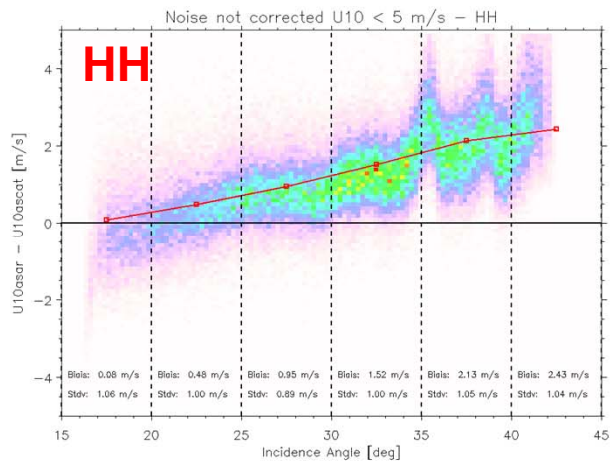
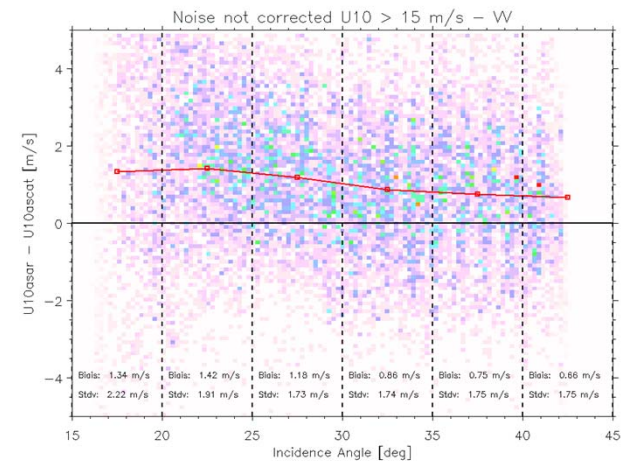
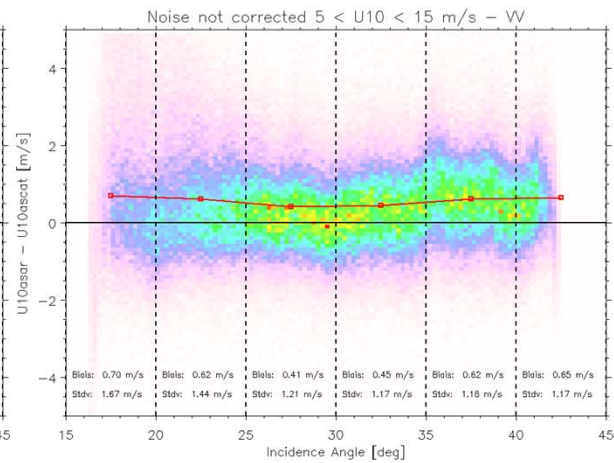
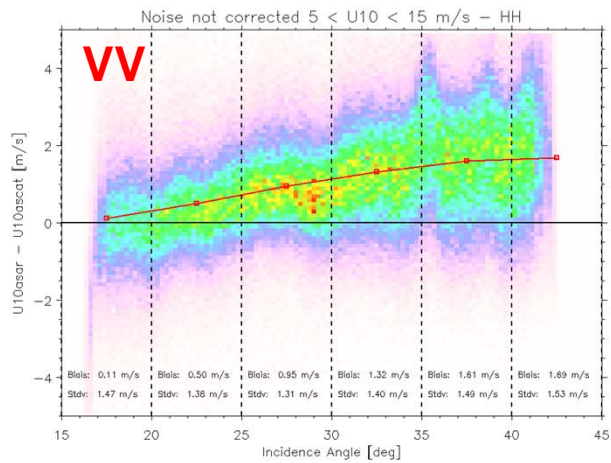
Speed	Direction
0.55 m/s	-1.58 deg
2.35 m/s	26.68 deg

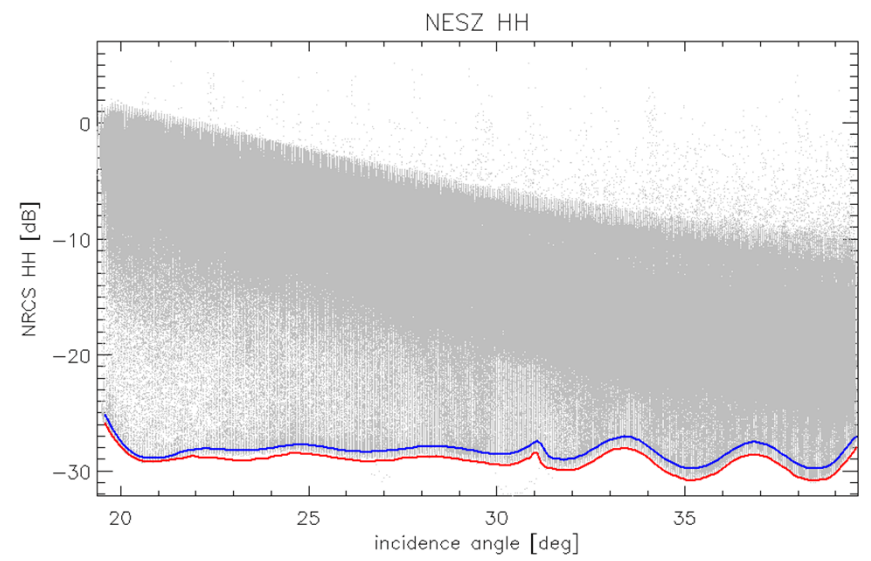
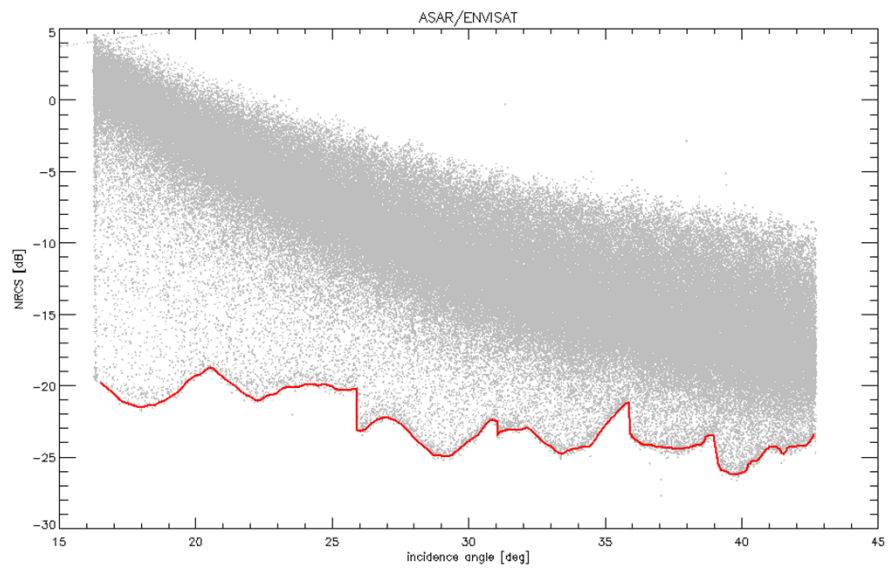


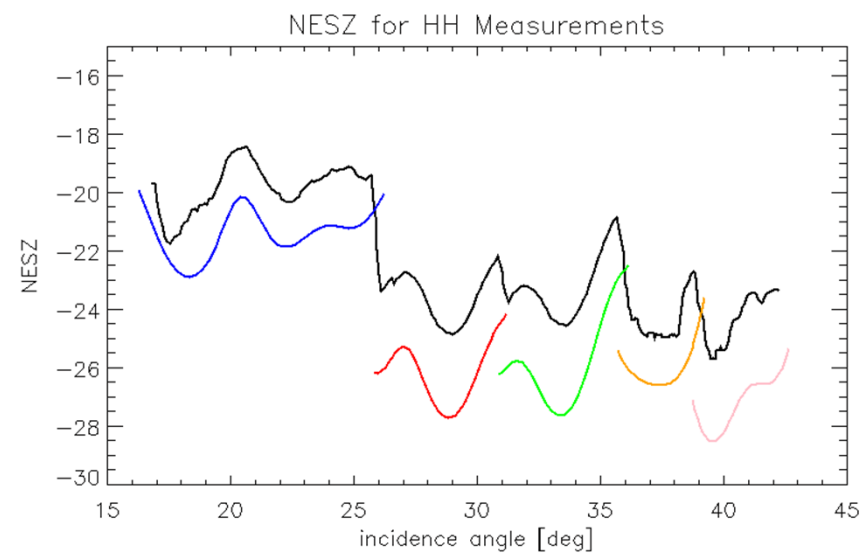
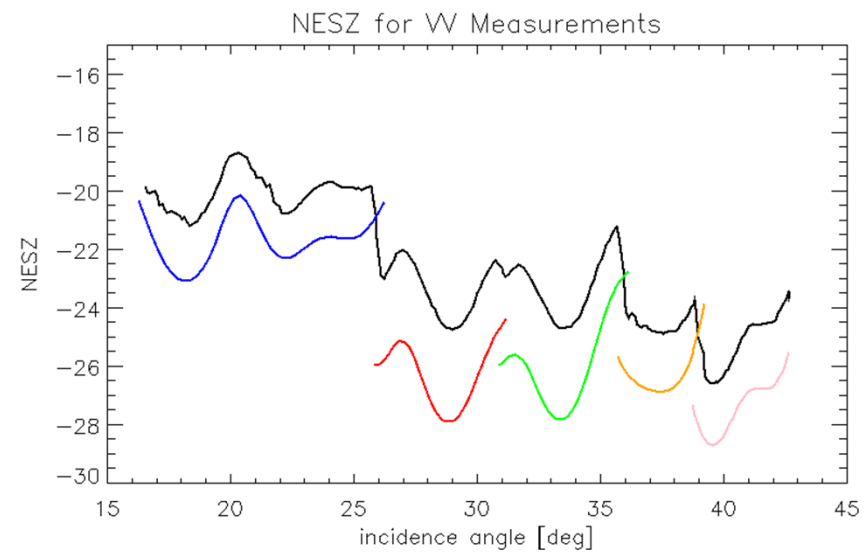
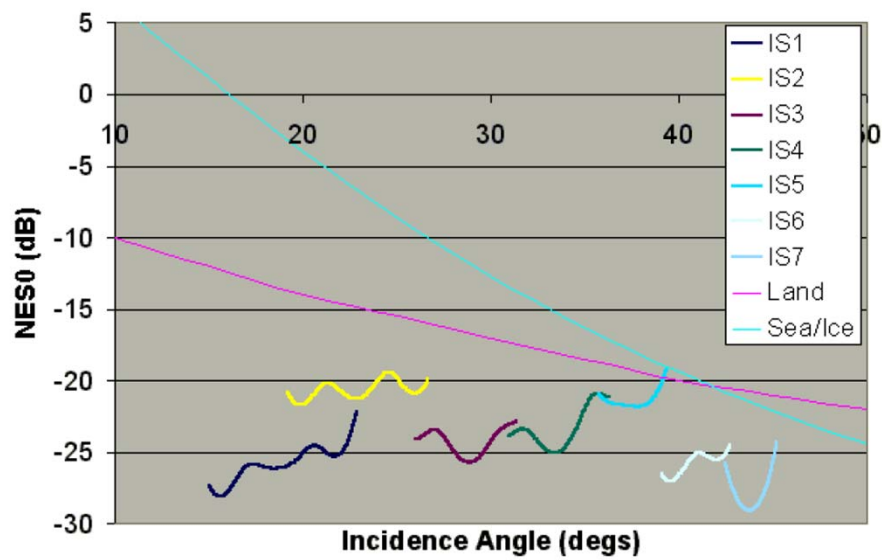
Speed	Direction
-0.1 m/s	1.82 deg
1.83 m/s	29.40 deg



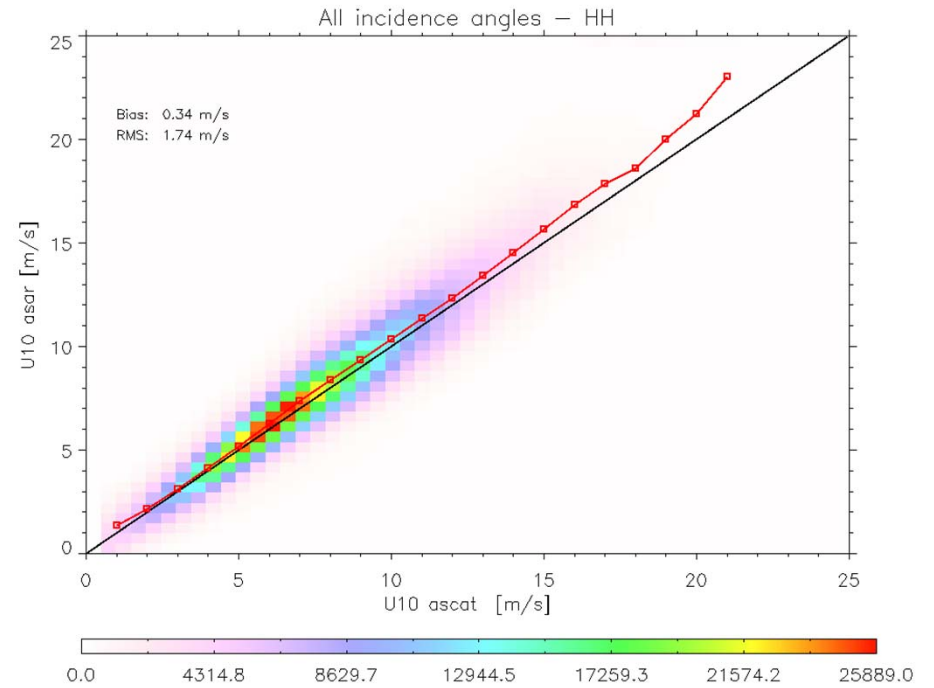
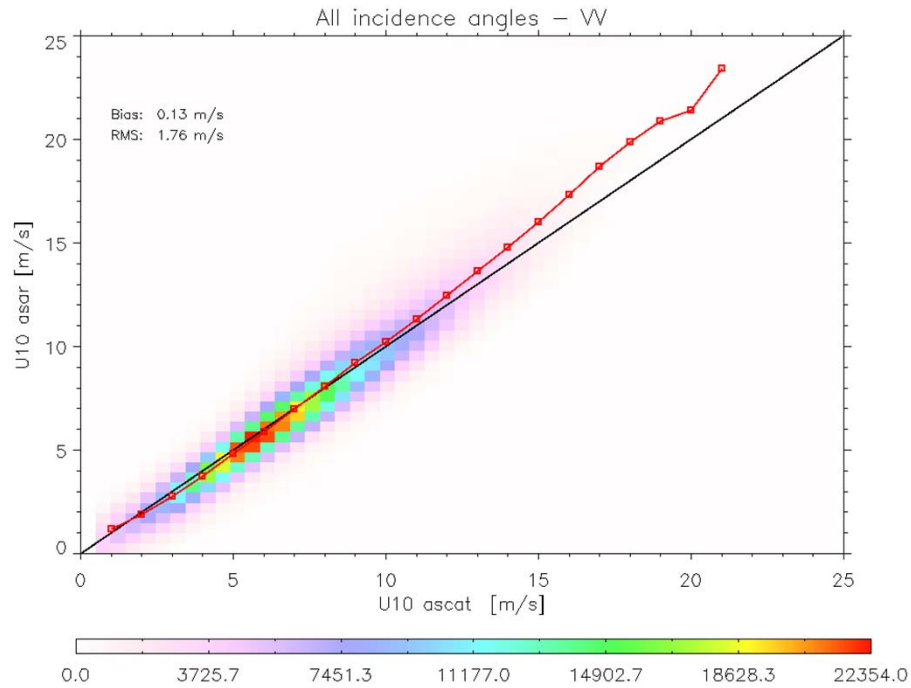
VV (speed)	HH (speed)
0.69 m/s	1.27 m/s
1.77 m/s	1.91 m/s





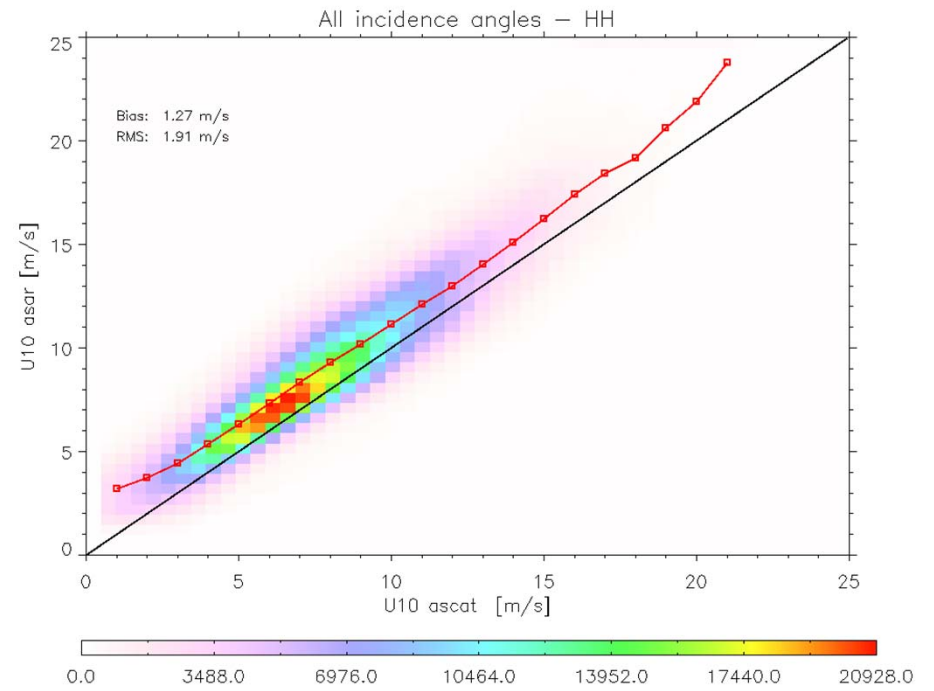
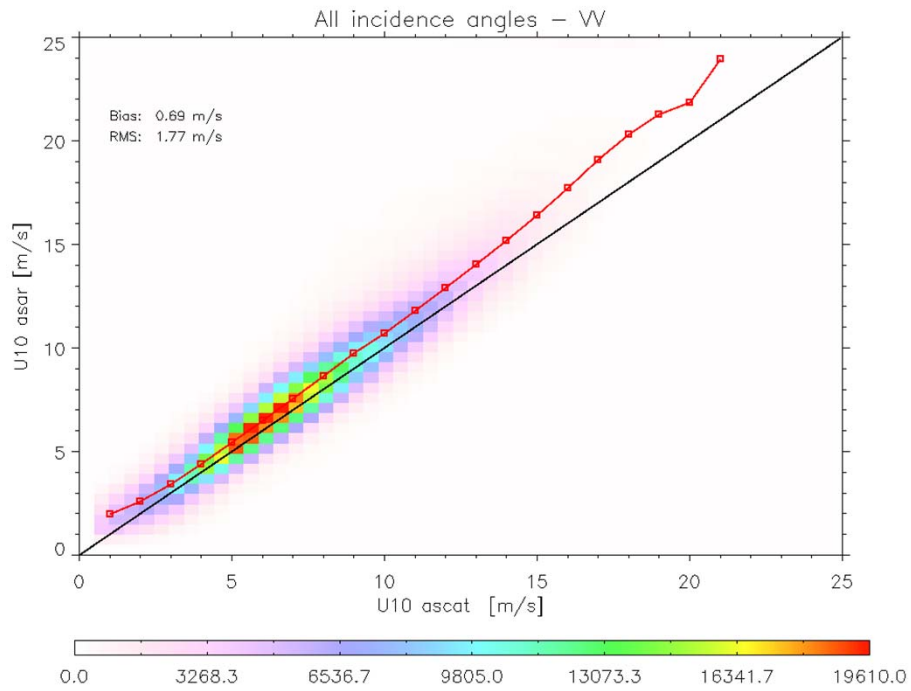


Corrected from Noise



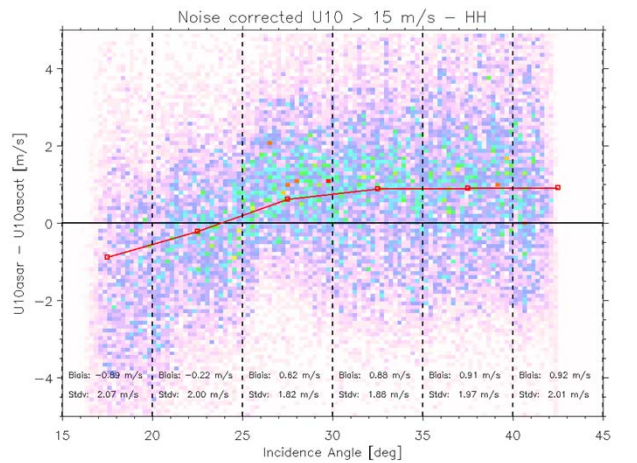
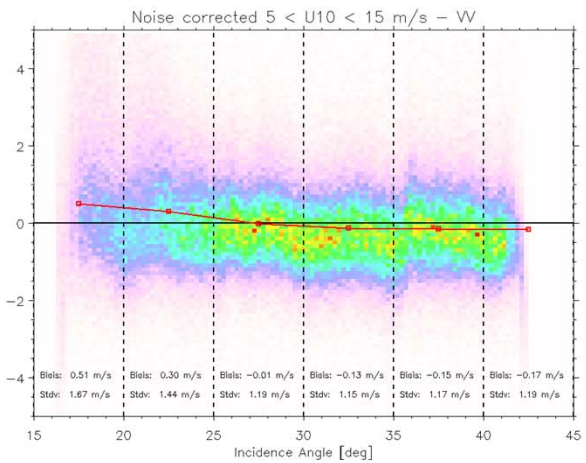
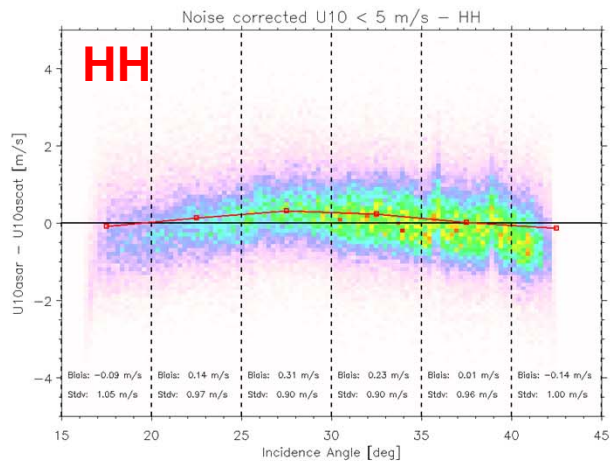
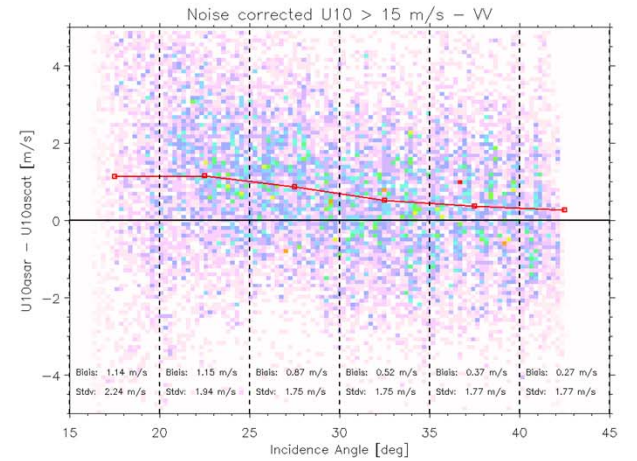
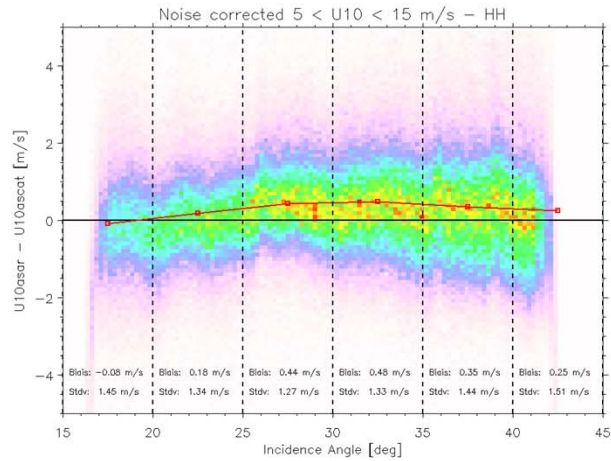
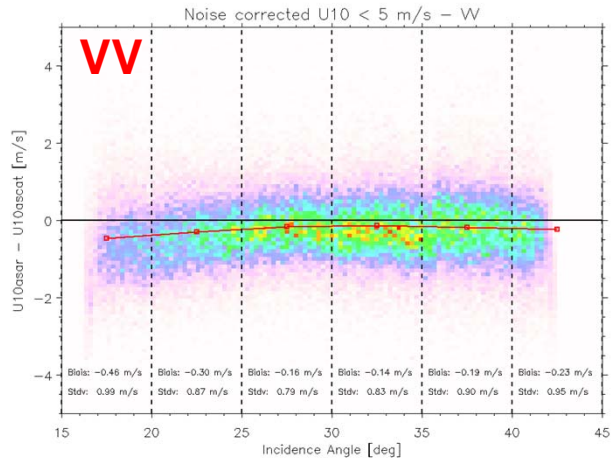
VV (speed)	HH (speed)
0.13 m/s	0.34 m/s
1.76 m/s	1.74 m/s

Not Corrected from Noise

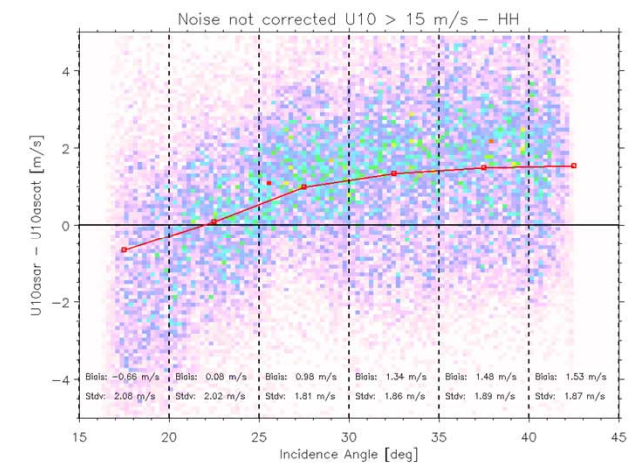
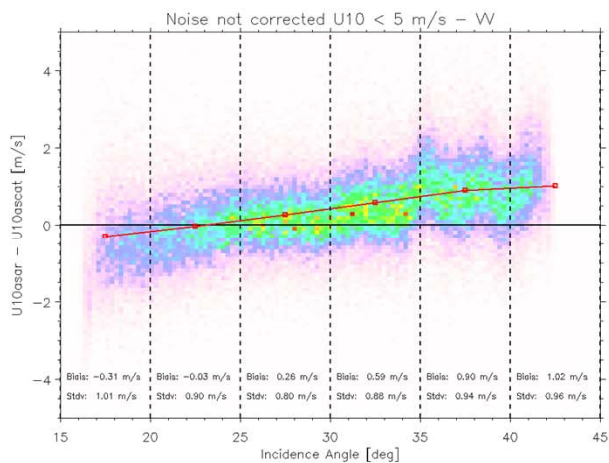
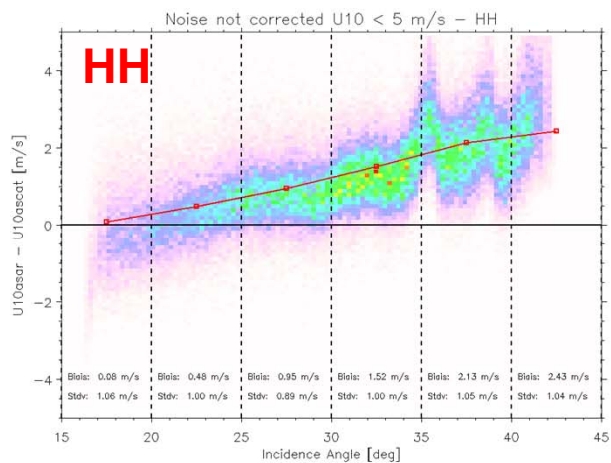
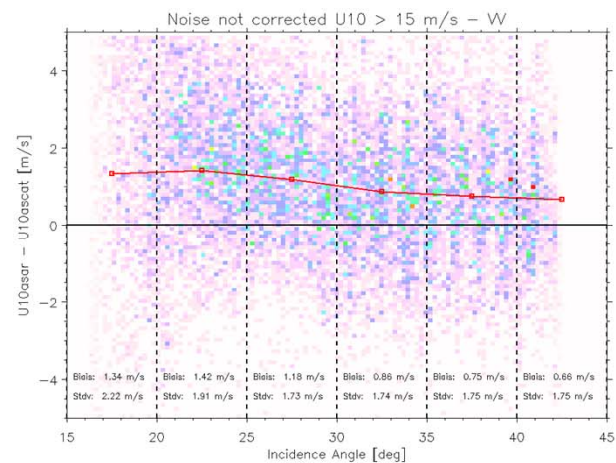
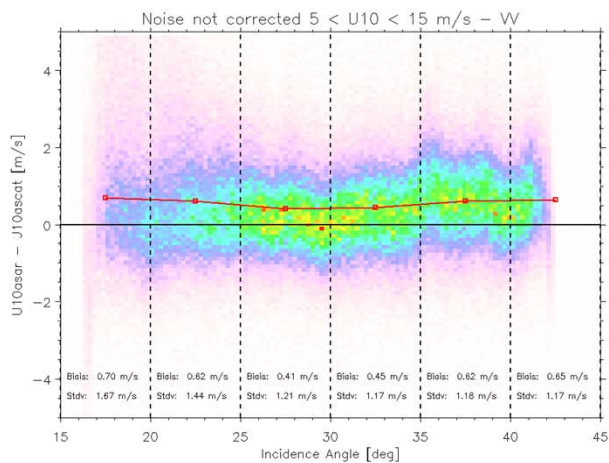
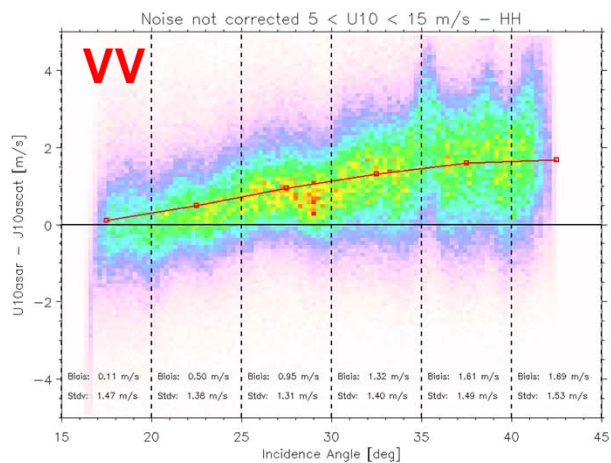


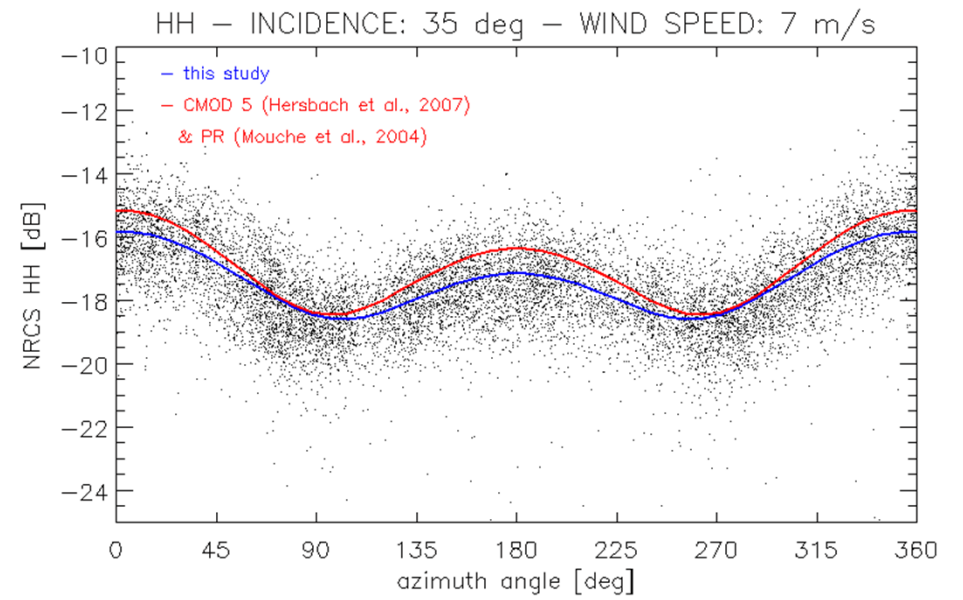
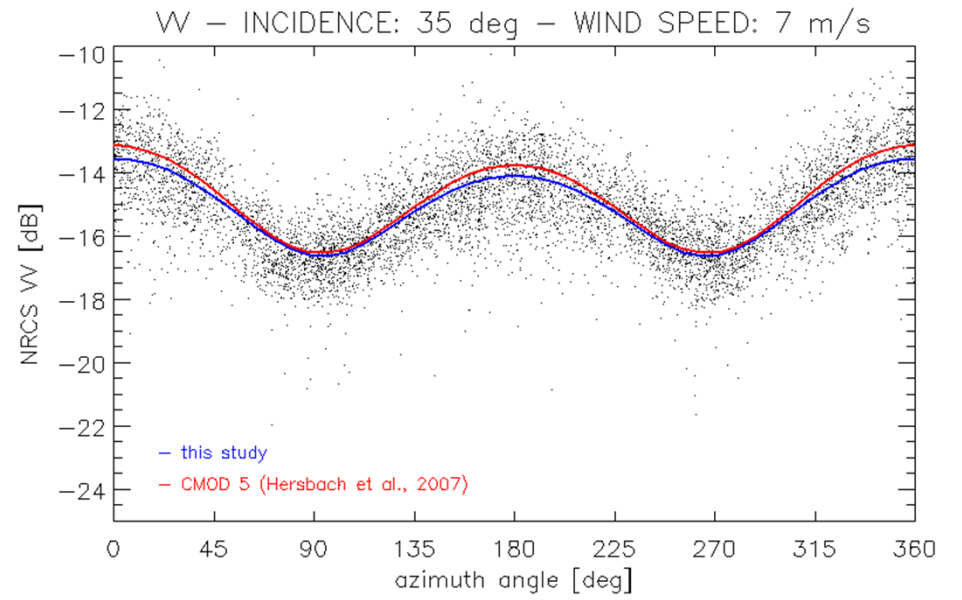
VV (speed)	HH (speed)
0.69 m/s	1.27 m/s
1.77 m/s	1.91 m/s

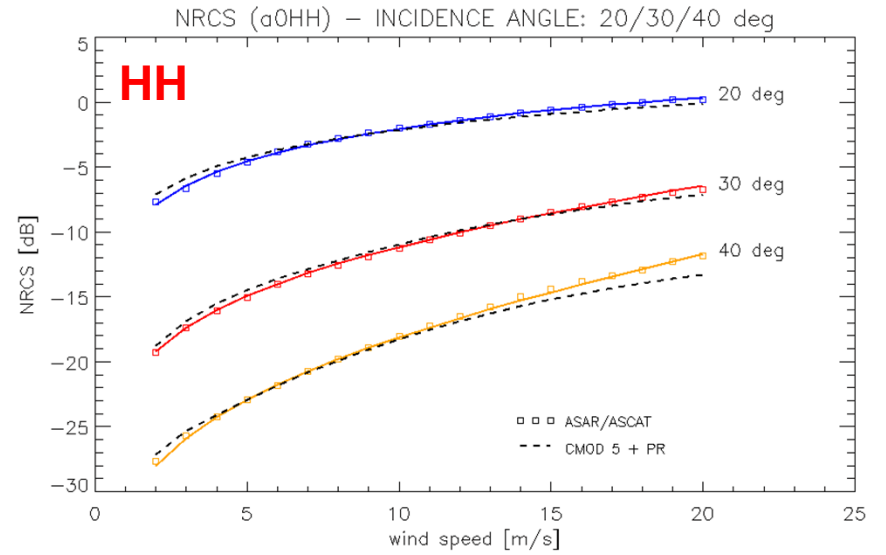
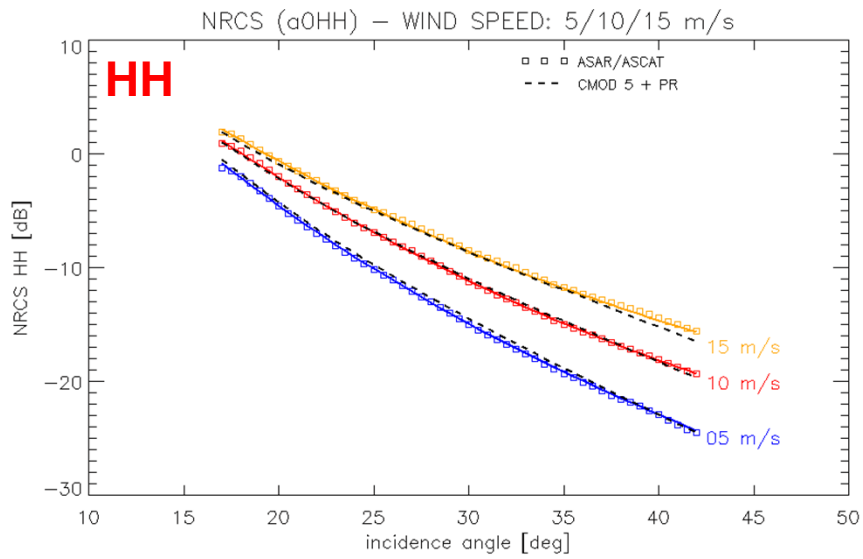
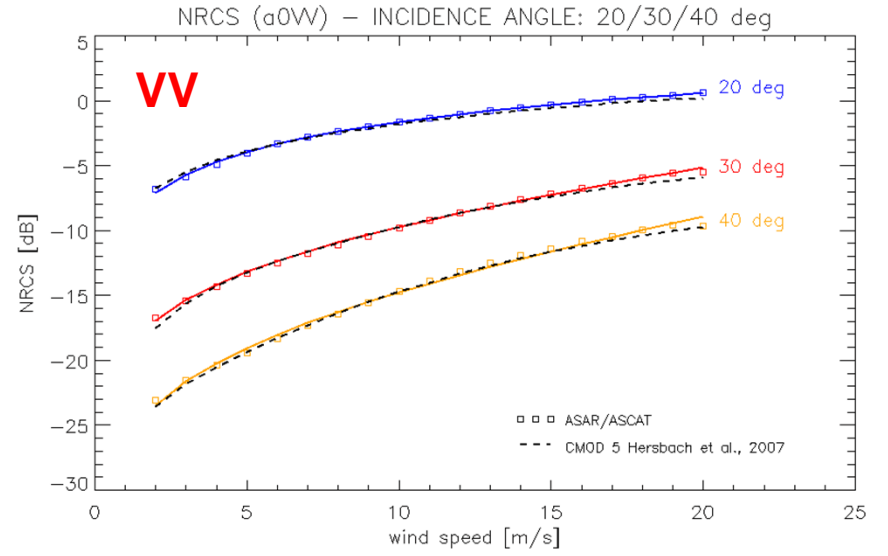
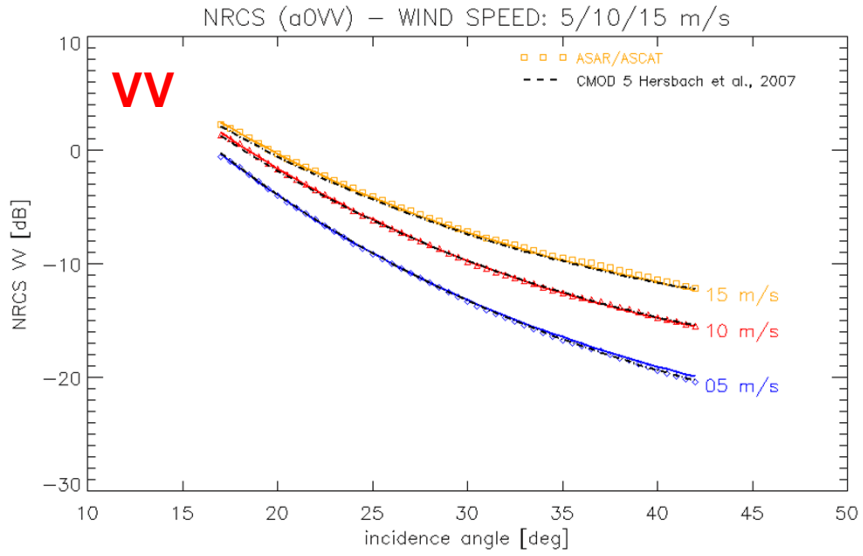
Corrected from Noise

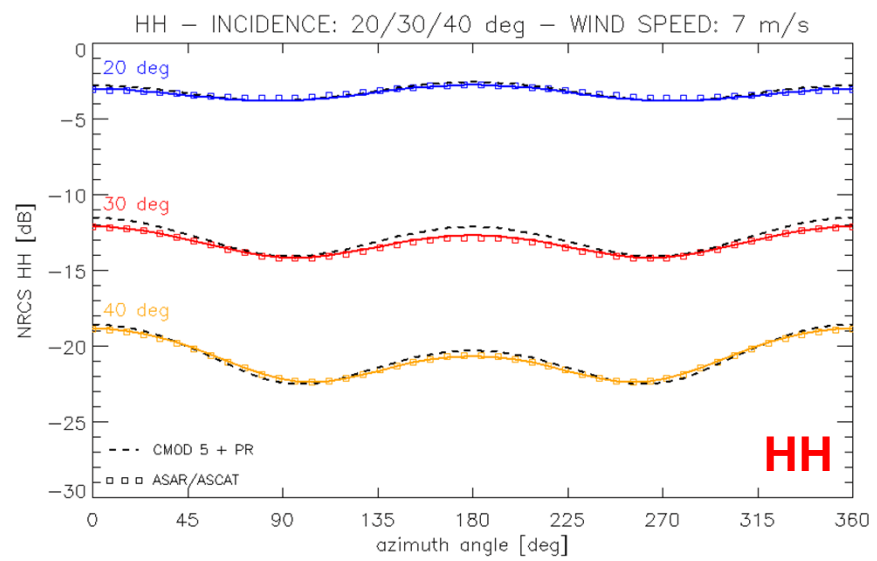
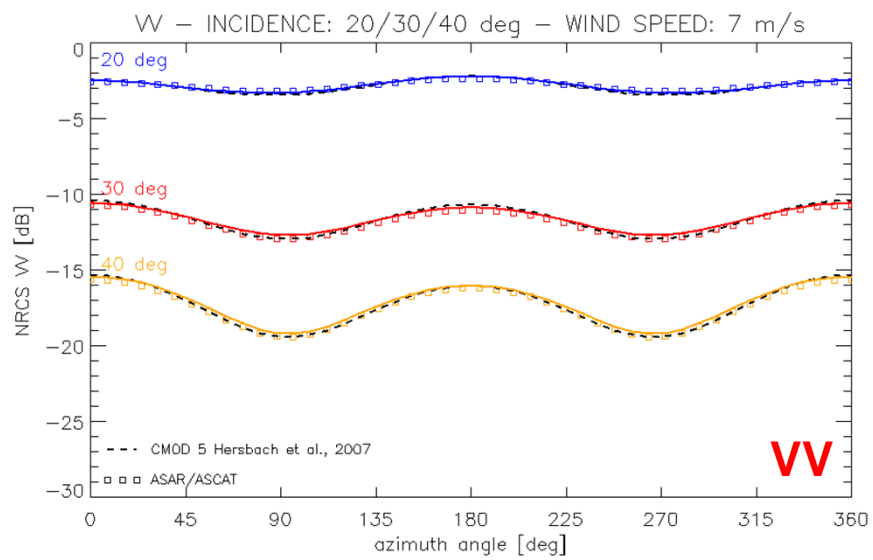


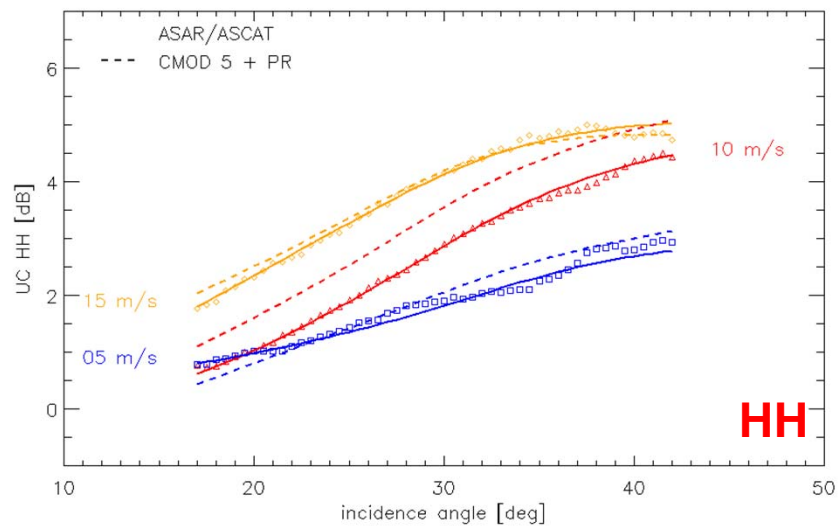
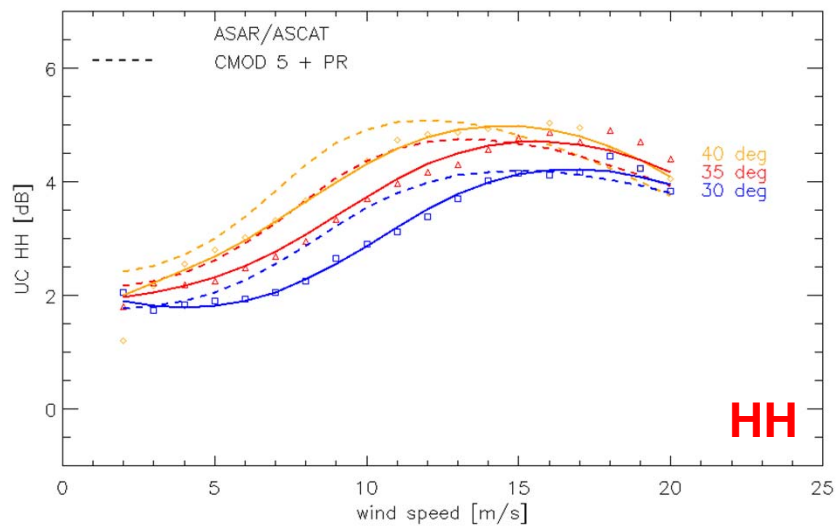
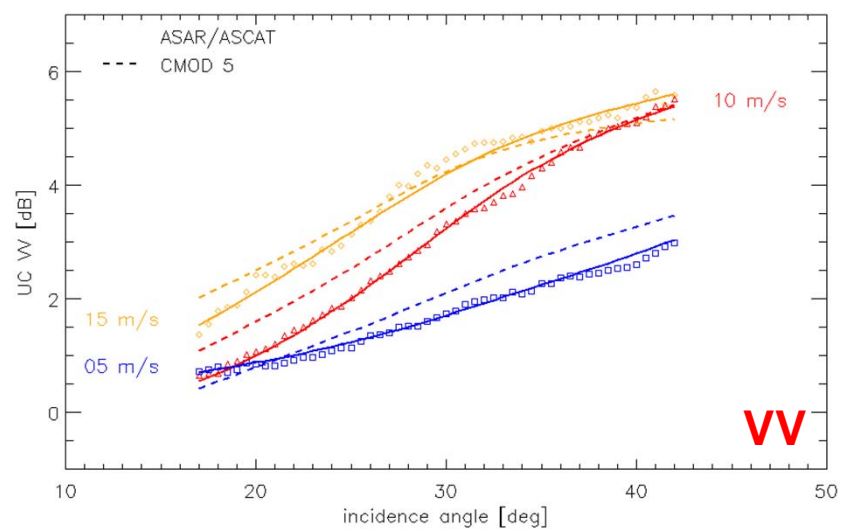
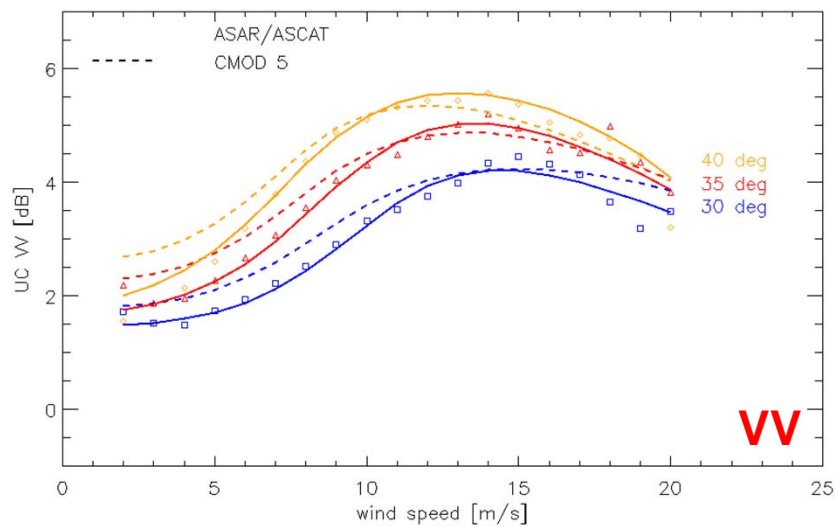
Not Corrected from Noise

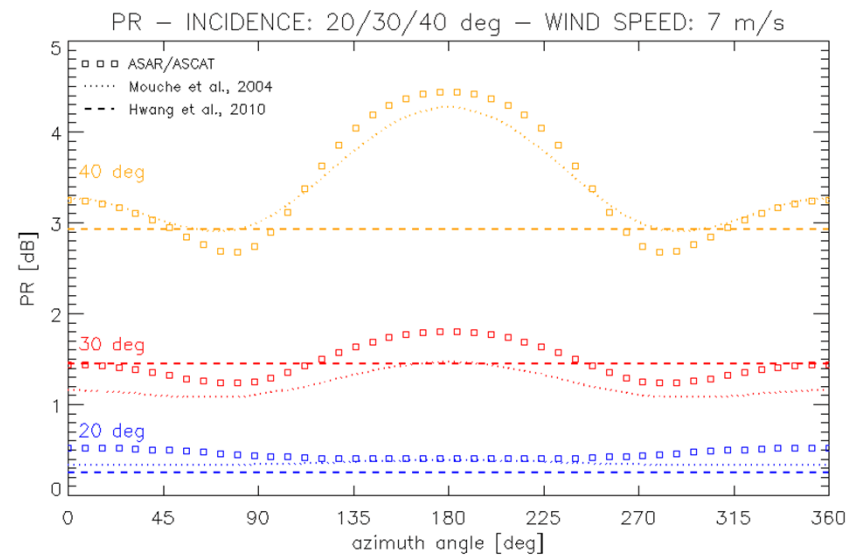
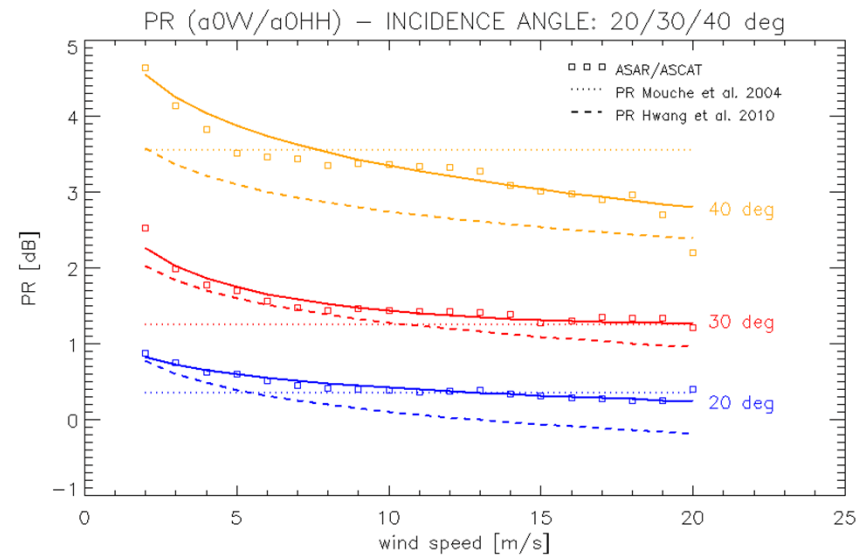
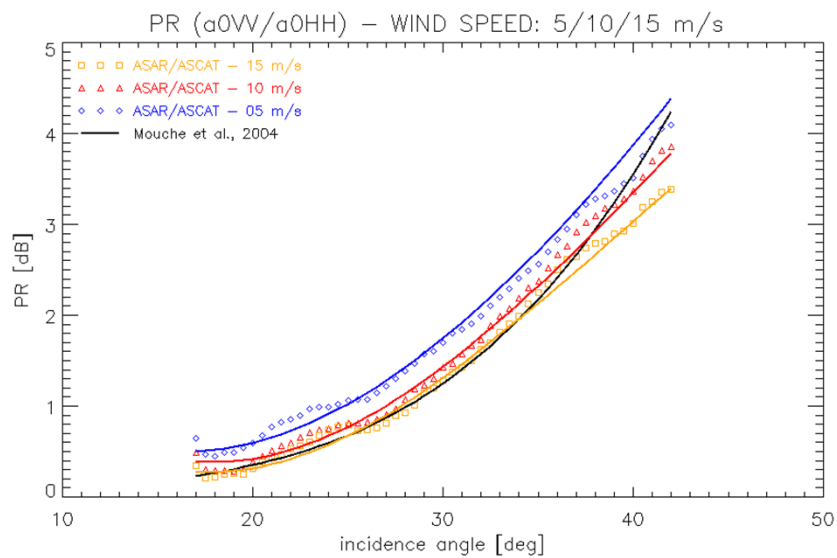




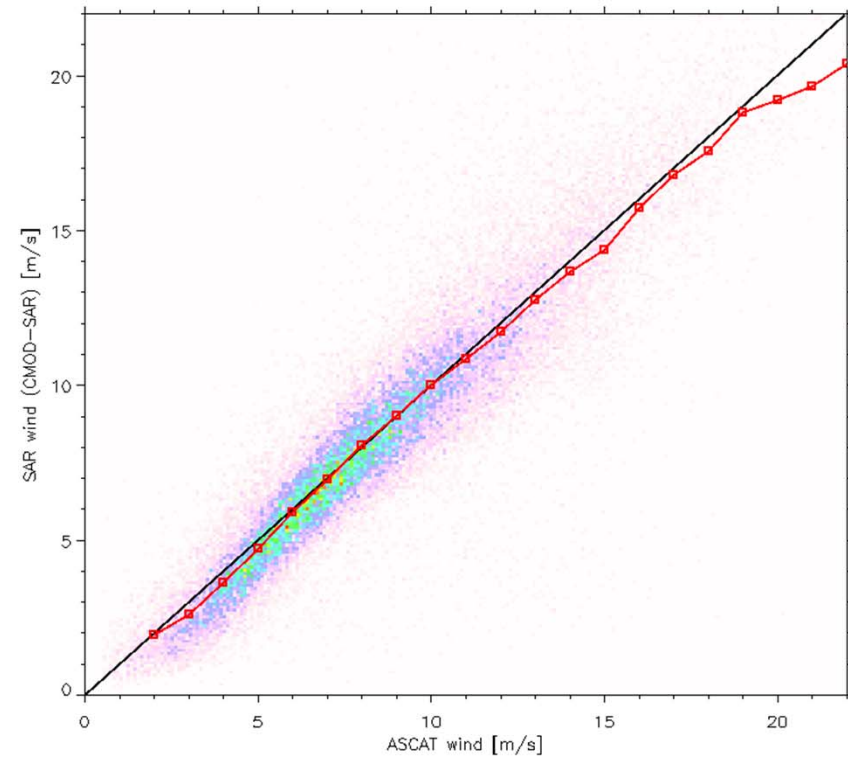
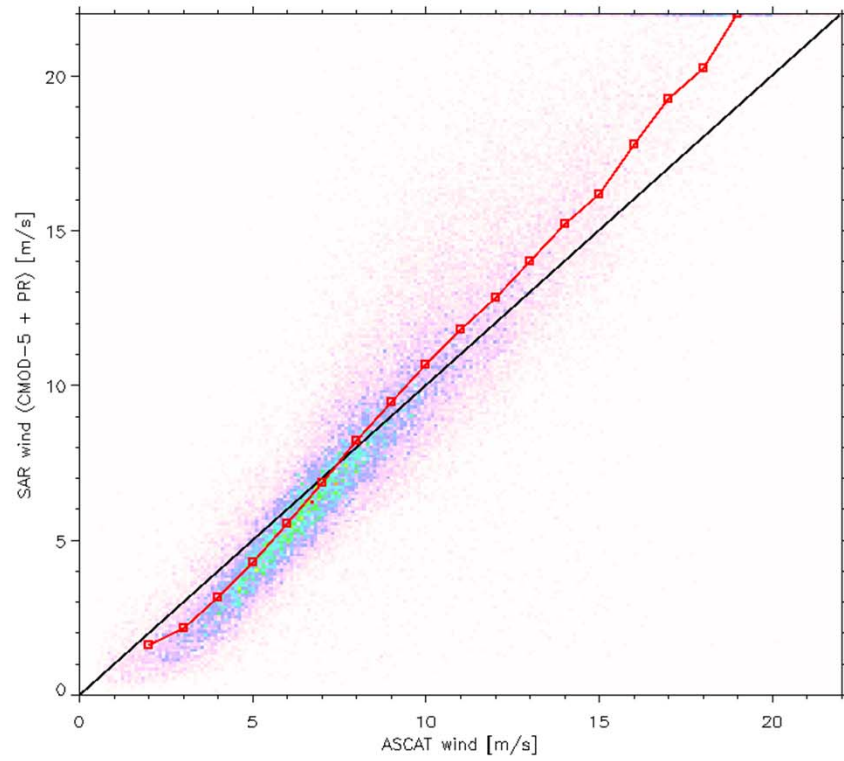




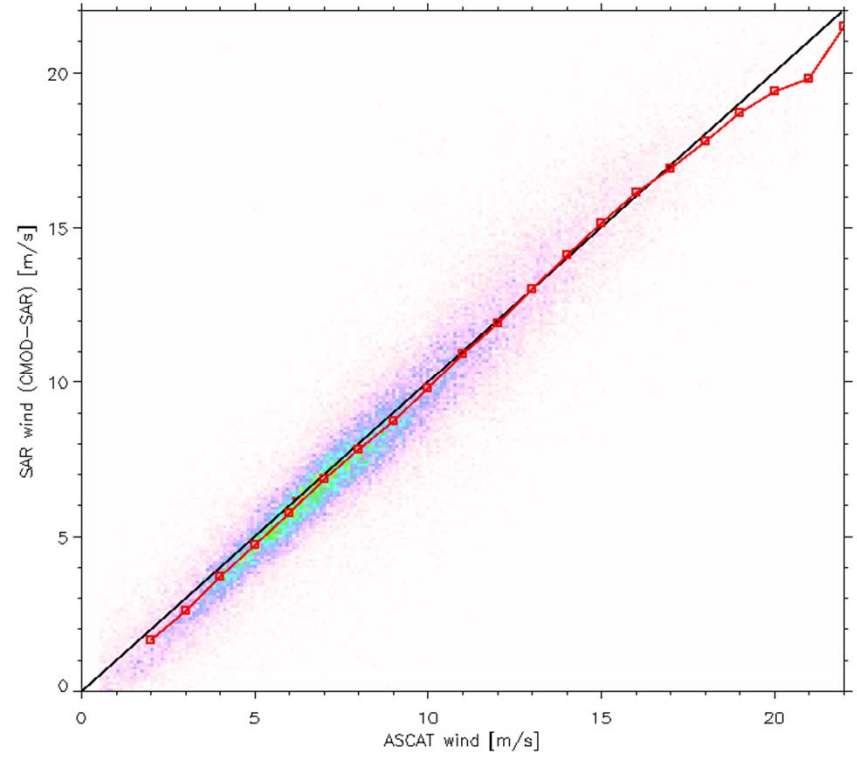
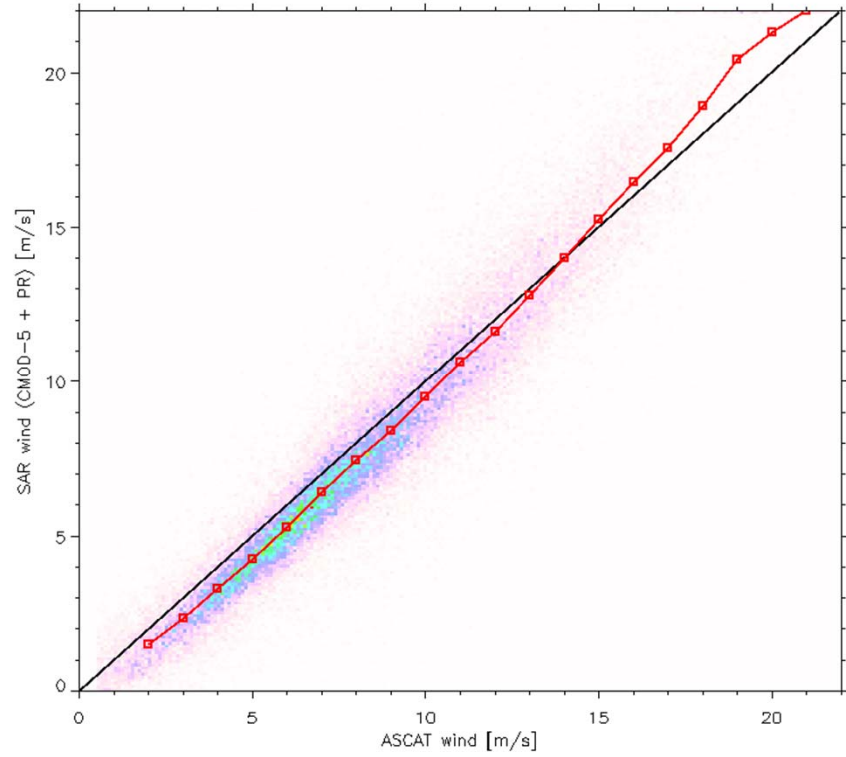




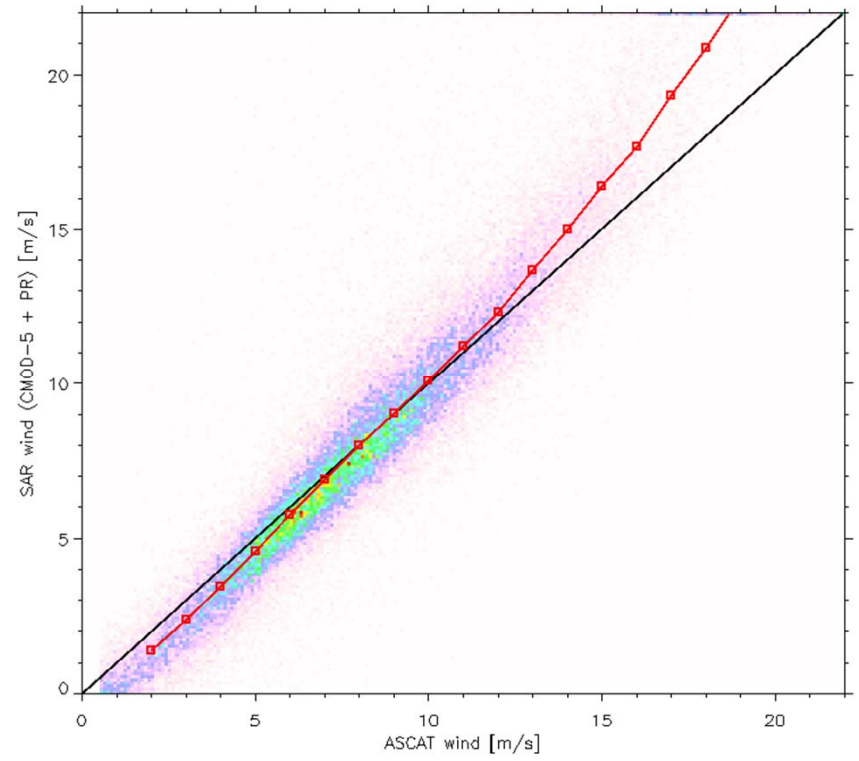
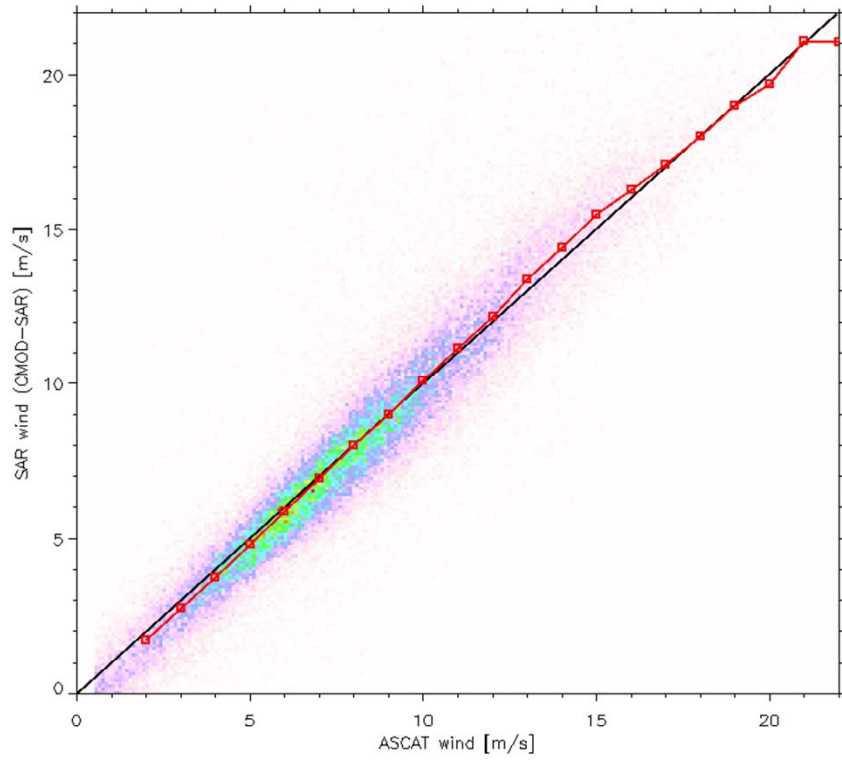
20



30



40



Suggestions

Need

for a complete reprocessing

- to get a cleaner data set to depict basic behavior of NRCS and Dop with respect to sea state due to wind waves
- to work on SAR CMOD-like functions

Attention must be paid to the acquisition plan during S1 commissioning phase (to get both VV/VH and H/HV).