

S-1 MPC

S1-A N-Cyclic Performance Report - 2018-02 Cycles 133 to 136 (22-Feb-2018 to 11-Apr-2018)

Reference: MPC-0100
Nomenclature: DI-MPC-NPR
Issue: 2018-02. 1
Date: 2018,May.04

CLS (siège)
8-10 rue Hermès
Parc technologique du Canal
31520 Ramonville Saint-Agne
FRANCE

Tél. : +33 (0)5 61 39 47 00
Fax : +33 (0)5 61 75 10 14
Mél. : info@cls.fr
Web : www.cls.fr

CLS Brest Le Ponant
Avenue La Pérouse
29280 Plouzané
FRANCE

Tél. : +33 (0)2 98 05 76 80
Fax : +33 (0)2 98 05 76 90





Chronology Issues:

Issue:	Date:	Reason for change:
2017-08.2	04.05.18	First Issue : reporting period 22-Feb-2018 to 11-Apr-2018

People involved in this issue:

Written by (*):	Peter Meadows	Date + Initials:(visa or ref)
Checked by (*):	K.Cordier	Date + Initial:(visa ou ref) K.Cordier
Approved by (*):	G.Hajduch	Date + Initial:(visa ou ref) G.Hajduch
Application authorized by (*):		Date + Initial:(visa ou ref)

**In the opposite box: Last and First name of the person + company if different from CLS*

Index Sheet:

Context:	Sentinel-1 Mission Performance Centre
Keywords:	Sentinel-1, Mission Performance Centre, N-Cyclic Report
Hyperlink:	

Distribution:

Company	Means of distribution	Names
ESA	Notification	N.Miranda

Applicable documents

Nomenclature	Title	Edition Number	Revision Number
[S1-AD-14]	S1 RS-MDA-52-7441 Sentinel-1 Product Specification	3	4
[S1-AD-15]	S1-RS-MDA-57-7440 Sentinel-1 Product Definition	2	7

Reference documents

None



List of Contents

1. Introduction	1
1.1. Purpose of the document	1
1.2. Structure of the document	1
2. Executive Summary	2
3. Instrument Status	3
3.1. Antenna Status	3
3.2. Instrument Unavailability	3
4. IPF and Auxiliary Data File Status	4
4.1. Level 1 Processor Issues	4
4.2. Auxiliary Data File Updates	4
5. Manoeuvres	7
6. Products Status	8
6.1. Level 0 Products	8
6.2. Level 1 Products	10
6.2.1. Image Quality	10
6.2.2. Radiometric Calibration	11
6.2.3. Geometric Calibration	12
6.2.4. Polarimetric Calibration	13
6.2.5. Elevation Antenna Patterns	14
6.2.6. Azimuth Antenna Patterns	14
6.2.7. Noise Equivalent Radar Cross-section	14
6.2.8. Antenna Pointing	15
6.2.9. Summary of Anomalies	18
6.2.10. Quality Disclaimers	18
Appendix A - List of Acronyms	19
Appendix B - S1-A Transmit Receive Module Failures	20
Appendix C - S1-A Instrument Unavailability	22
Appendix D - S1-A Auxiliary Data Files	26
Appendix E - S-1A Quality Disclaimers	29



1. Introduction

1.1. Purpose of the document

The purpose of this document is to provide a status on the S1-A sensor and product performance for orbit repeat cycle 133 from 22nd February to 6th March 2018, cycle 134 from 6th March to 18th March 2018, cycle 135 from 18th March to 30th March 2017 and cycle 136 from 30th March to 11th April 2018.

1.2. Structure of the document

- Chapter 1 : This introduction
- Chapter 2 : Executive Summary
- Chapter 3 : Instrument Status
- Chapter 4 : IPF and Auxiliary Data File Status
- Chapter 5 : Manoeuvres
- Chapter 6 : Products Status

The following appendices are also provided:

- Appendix A : List of Acronyms
- Appendix B : S1-A Transmit Receive Module Failures
- Appendix C : S1-A Instrument Unavailability
- Appendix D : S1-A Auxiliary Data Files



2. Executive Summary

The main change for S1-A during cycles 133 to 136 (22nd February to 11th April 2018) was the deployment of IPF v2.90 (see Section 4.1 for further details).

A summary of the instrument and product status is provided in following sections of the document.

The list of Quality Disclaimers on the Sentinel-1A products performances and the list of the IPF Auxiliary Data Files can be accessed on the QC Web Server at following address:

<https://qc.sentinel1.eo.esa.int/>



3. Instrument Status

Here the status of the S1-A instrument during the reporting period is provided.

3.1. Antenna Status

There were no new S1-A antenna transmit/receive module failures during the reporting period.

TRM	Description	Date of Failure

Table 1 S1-A Antenna Transmit/Receive Module Failures

A full list of all TRM failures since S1-A launch is given in Appendix B.

3.2. Instrument Unavailability

Table 2 gives when the S1-A instrument was unavailable during the reporting period:

Start Date/Time	End Date/Time	MPC Reference	Summary
15/03/2018 20:06	16/03/2018 10:25	SOB-888	Sentinel-1A Unavailability between 15/03/2018 and 16/03/2018

Table 2 S1-A Instrument Unavailabilities

A full list of all instrument unavailabilities since the S1-A launch is given in Appendix C.



4. IPF and Auxiliary Data File Status

4.1. Level 1 Processor Issues

On 13th March 2018 IPF 2.90 was deployed. The processor update was mainly aimed at introducing full Stripmap radiometric normalization and changes regarding noise data processing. The new de-noising approach includes:

- Support to new LON product format, including noise-equivalent echoes
- Update of noise vectors annotations to include azimuth contributions

In addition the Sentinel-1 Product Specification, S1-RS-MDA-52-7441, became applicable following the IPF v2.90 update.

4.2. Auxiliary Data File Updates

There were updates to S1-A Auxiliary Data Files (ADFs) during the reporting period as indicated below. A full list of currently applicable ADF files is given in Appendix D.

Instrument ADF (AUX_INS)

ADF	Update Reason
S1A_AUX_INS_V20171017T080000_G20180313T104658.SAFE	Update for usage with IPF V290: - schemaVersion updated to 3.3 - new fields (correctBistaticDelay Method, estimateNoiseEquivalent PowerFlag) added. Related to RDB#6.
S1A_AUX_INS_V20160627T000000_G20180313T103836.SAFE	As above but related to RDB#5.
S1A_AUX_INS_V20150722T120000_G20180313T102353.SAFE	As above but related to RDB#5.
S1A_AUX_INS_V20150519T120000_G20180313T101559.SAFE	As above but related to RDB#4.
S1A_AUX_INS_V20140908T000000_G20180313T100906.SAFE	As above but related to RDB#3.
S1A_AUX_INS_V20140616T133500_G20180313T100039.SAFE	As above but related to RDB#2.
S1A_AUX_INS_V20140406T133000_G20180313T095009.SAFE	As above but related to RDB#1.

Table 3 AUX_INS Updates

Calibration ADF (AUX_CAL)

ADF	Update Reason
S1A_AUX_CAL_V20171017T080000_G20180313T104820.SAFE	Revised SM, IW and EW noise calibration factors applicable for IPF V290. Related to RDB#6.
S1A_AUX_CAL_V20160627T000000_G20180313T103934.SAFE	As above but related to RDB#5.
S1A_AUX_CAL_V20150722T120000_G20180313T102457.SAFE	As above but related to RDB#5.



S1A_AUX_CAL_V20150519T120000_G20180313T101709.SAFE	As above but related to RDB#4.
S1A_AUX_CAL_V20140908T000000_G20180313T101017.SAFE	As above but related to RDB#3.
S1A_AUX_CAL_V20140616T133500_G20180313T100218.SAFE	As above but related to RDB#2.
S1A_AUX_CAL_V20140406T133000_G20180313T095442.SAFE	As above but related to RDB#1.

Table 4 AUX_CAL Updates

L1 Processor Parameters ADF (AUX_PP1)

ADF	Update Reason
S1A_AUX_PP1_V20171017T080000_G20180315T153822.SAFE	Fixing of an issue on the noise vector annotation of S-1A products generated from LON with updated content. Related to RDB#6.
S1A_AUX_PP1_V20171017T080000_G20180313T104548.SAFE	Update for usage with IPF V290: <ul style="list-style-type: none"> - schemaVersion updated to 3.3 - new fields (correctBistaticDelay Method, estimateNoiseEquivalent PowerFlag) added - processing gains for SM and WV modes, L1 and L2 products, updated according to corresponding re-calibration activities - azimuth processing bandwidths for S1, S3 and S5 modes, SLC products, updated - azimuth hamming windows for SM modes, SLC and GRD products, updated. Related to RDB#6.
S1A_AUX_PP1_V20150722T120000_G20180313T102236.SAFE	As above but related to RDB#5.
S1A_AUX_PP1_V20150519T120000_G20180313T101449.SAFE	As above but related to RDB#4.
S1A_AUX_PP1_V20140908T000000_G20180313T100753.SAFE	As above but related to RDB#3.
S1A_AUX_PP1_V20140616T133500_G20180313T095922.SAFE	As above but related to RDB#2.
S1A_AUX_PP1_V20140406T133000_G20180313T094731.SAFE	As above but related to RDB#1.

Table 5 AUX_PP1 Updates

L2 Processor Parameters ADF (AUX_PP2)

ADF	Update Reason

Table 6 AUX_PP2 Updates



Simulated Cross Spectra ADF (AUX_SCS)

ADF	Update Reason

Table 7 AUX_SCS Updates



5. Manoeuvres

Table 8 gives a list of the S1-A orbit manoeuvres that occurred during the reporting period¹:

Start Date	Start Time	Stop Date	Stop Time	Comment
07/03/2018	21:58:07.334	07/03/2018	21:59:38.709	
21/03/2018	21:41:24.463	21/03/2018	21:41:33.713	
04/04/2018	21:31:28.261	04/04/2018	21:31:35.761	
11/04/2018	21:20:44.781	11/04/2018	21:21:10.406	
11/04/2018	23:43:46.350	11/04/2018	23:47:46.850	

Table 8 S1-A Orbit Manoeuvres

¹ This table is extracted from the DBL file of the SAFE product containing the list of thruster event by applying : `awk 'NR>1 {if ($3=1) start=$1 ; getline; print start";"$1}'`



6. Products Status

6.1. Level 0 Products

Figure 1 show missing lines, data gaps, and timeline failures derived from L1 annotation products (purple for IW, blue for EW and green for WV):-

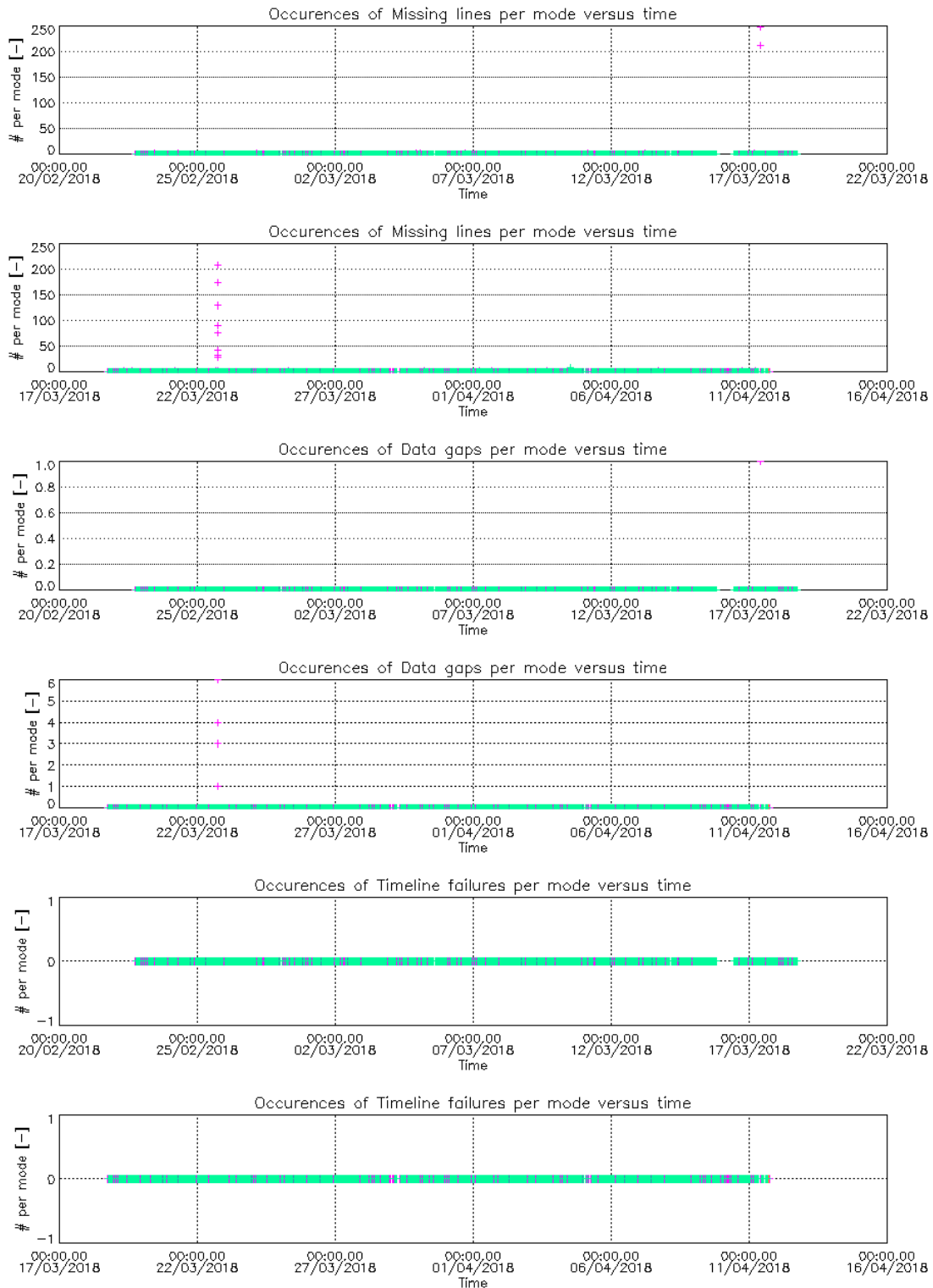


Figure 1 Missing Lines, Data Gaps and Timeline Failures.

Proprietary information: no part of this document may be reproduced divulged or used in any form without prior permission from CLS.



The above plots indicate no problems with missing lines and data gaps plus a small number of timeline failures.

Figure 2 and Figure 3 show I and Q trends and imbalance for IW and WV modes:

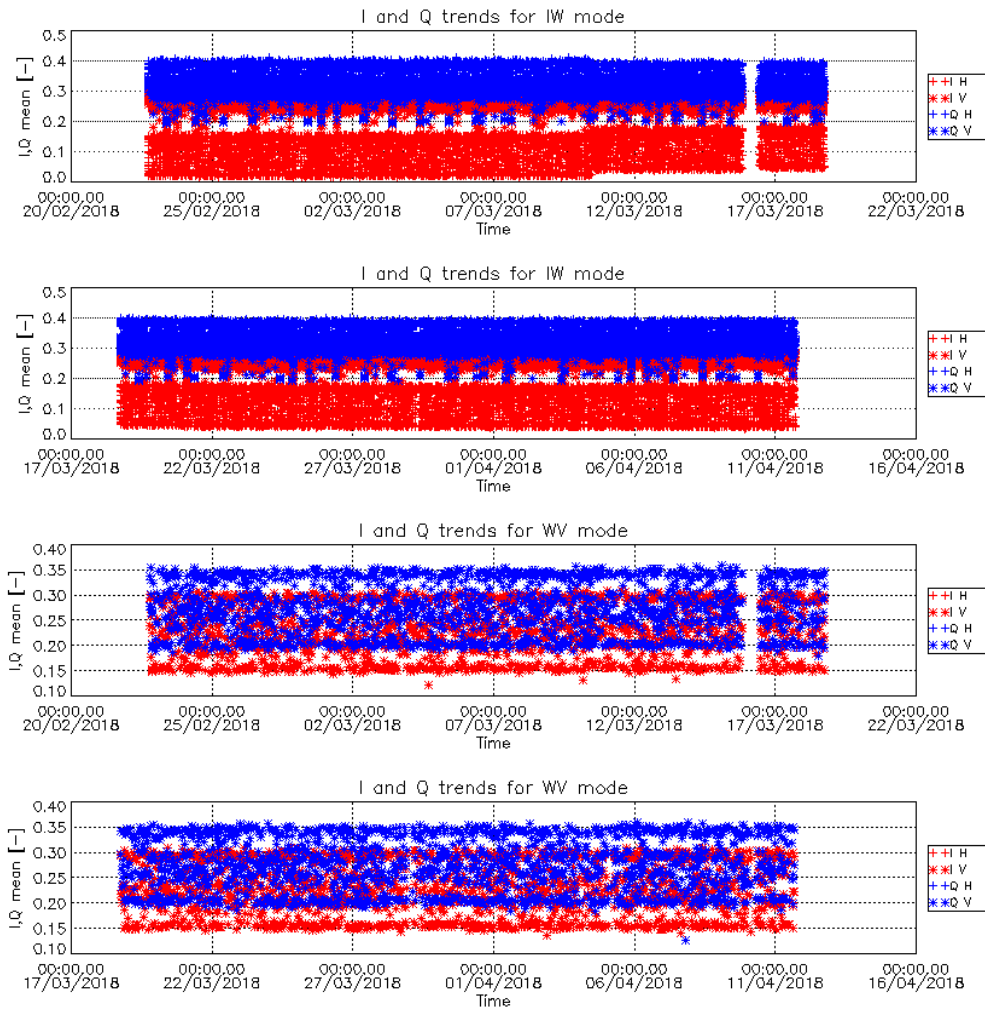
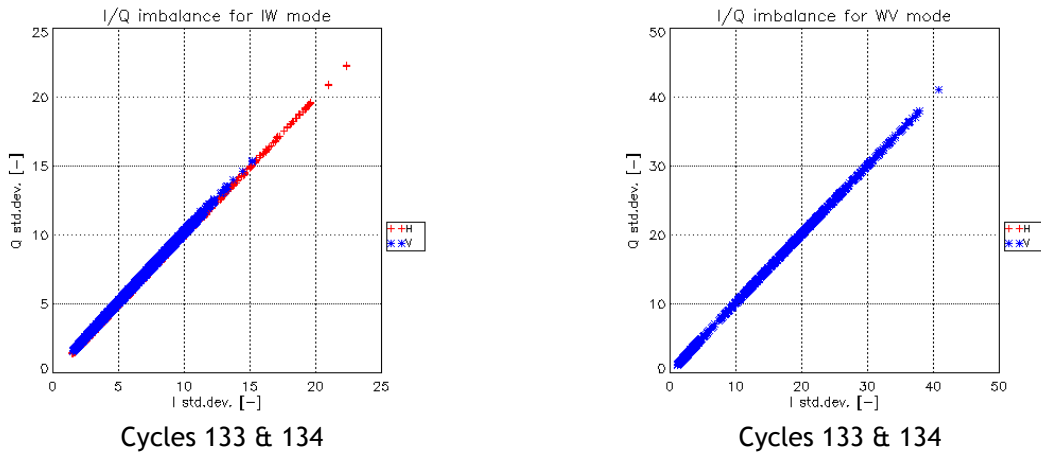


Figure 2 I&Q Channels

The jumps that may be noticed on the above time-series are related to instrument switch on/off, and correspond to a normal behaviour, that is compensated at processing level. It therefore has no impact on data quality.



Cycles 133 & 134

Cycles 133 & 134

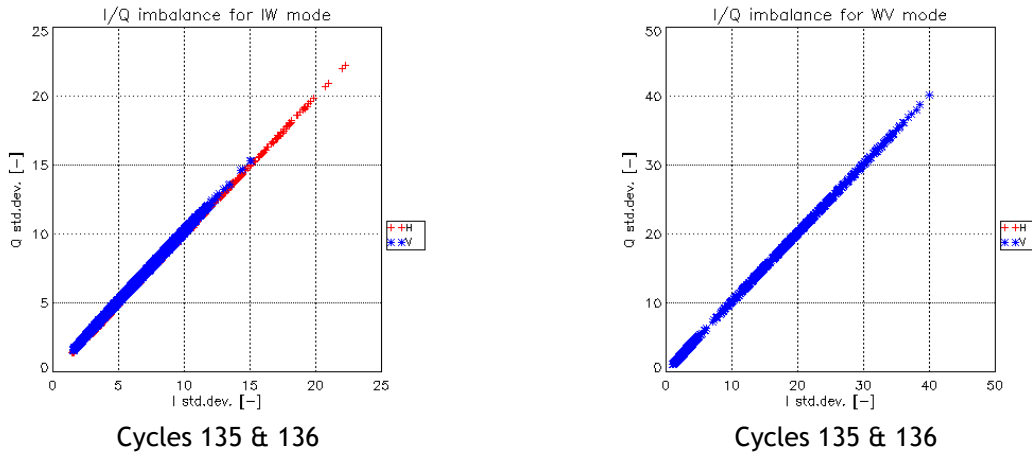


Figure 3 WV I&Q Channel Imbalance

The I & Q imbalance plots in the figure above (*left: IW mode, right: WV mode*) indicate that the Rx I and Q channels are perfectly balanced.

6.2. Level 1 Products

6.2.1. Image Quality

Figure 4 and Table 9 give the azimuth and range spatial resolution using the Australian corner reflector array, the BAE corner reflector and the DLR transponders & corner reflectors derived from IW imagery acquired during the reporting period. The spatial resolution has been derived from SLC data. Table 10 gives the impulse response function (IRF) sidelobe ratios. These indicate a nominal IRF performance.

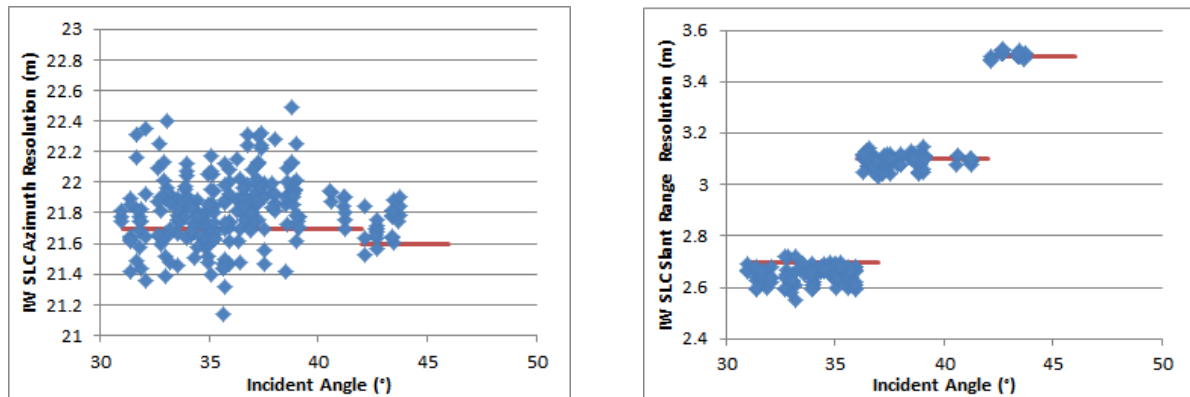


Figure 4 IW Azimuth and Slant Range Spatial Resolutions

Mode/Swath	Azimuth Spatial Resolution (m)	Slant Range Spatial Resolution (m)
IW1	21.77±0.21	2.65±0.03
IW2	21.90±0.20	3.09±0.02
IW3	21.72±0.10	3.51±0.01

Table 9 IW Azimuth and Slant Range Spatial Resolutions



Mode/Swath	Integrated Sidelobe Ratio (dB)	Peak Sidelobe Ratio (dB)	Spurious Sidelobe Ratio (dB)
IW	-10.50±3.68	-19.31±1.35	-22.33±3.64

Table 10 IW Sidelobe Ratios

No Equivalent Number of Looks/Radiometric Resolution and Ambiguity measurements were made during the reporting period.

6.2.2. Radiometric Calibration

Figure 5 and Figure 6 give the relative radar cross-section using the DLR transponders & corner reflectors, Australian corner reflector array and the BAE corner reflector derived from IW imagery acquired during the reporting period. The relative radar cross-section has been derived from SLC data. These indicate a nominal radiometric calibration performance (where there is sufficient number of measurements per sub-swath).

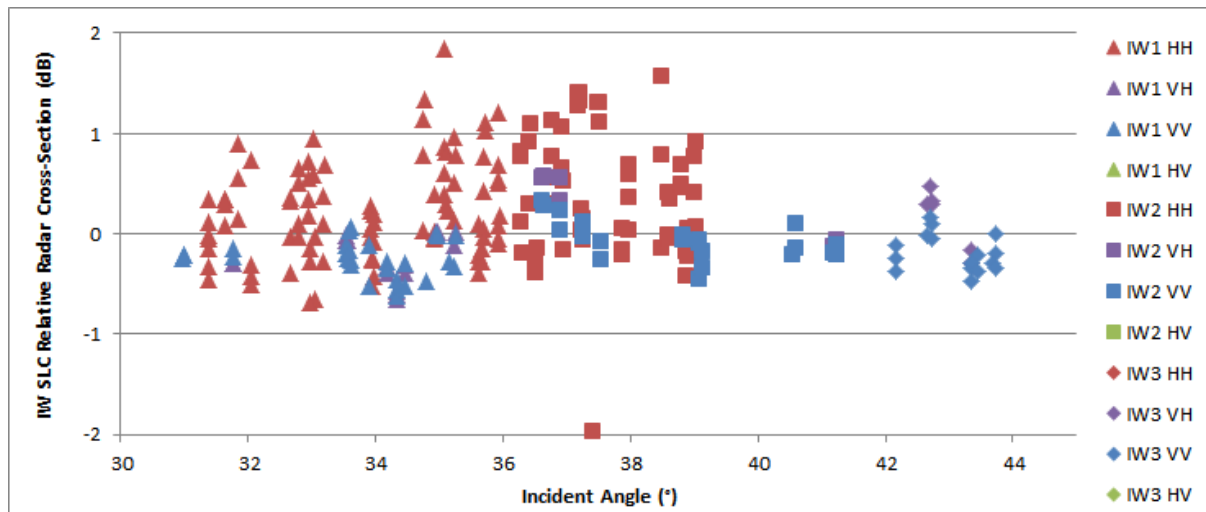


Figure 5 IW Relative Radar Cross-Section

Mode/Swath	Relative Radar Cross-Section (dB)				
	All	HH	VH	VV	HV
IW1	0.08±0.47	0.24±0.48	-0.25±0.18	-0.25±0.18	
IW2	0.15±0.81	0.22±0.95	0.23±0.35	-0.07±0.20	
IW3	-0.11±0.27		0.09±0.33	-0.19±0.18	

Table 11 IW Relative Radar Cross-Section

Figure 6 shows the IW long-term relative radar cross-section of the BAE corner reflector since the start of the Sentinel-1A routine phase (October 2014). The mean relative radar cross-section is -0.17±0.21 dB (the majority of the measurements are for VV polarisation).

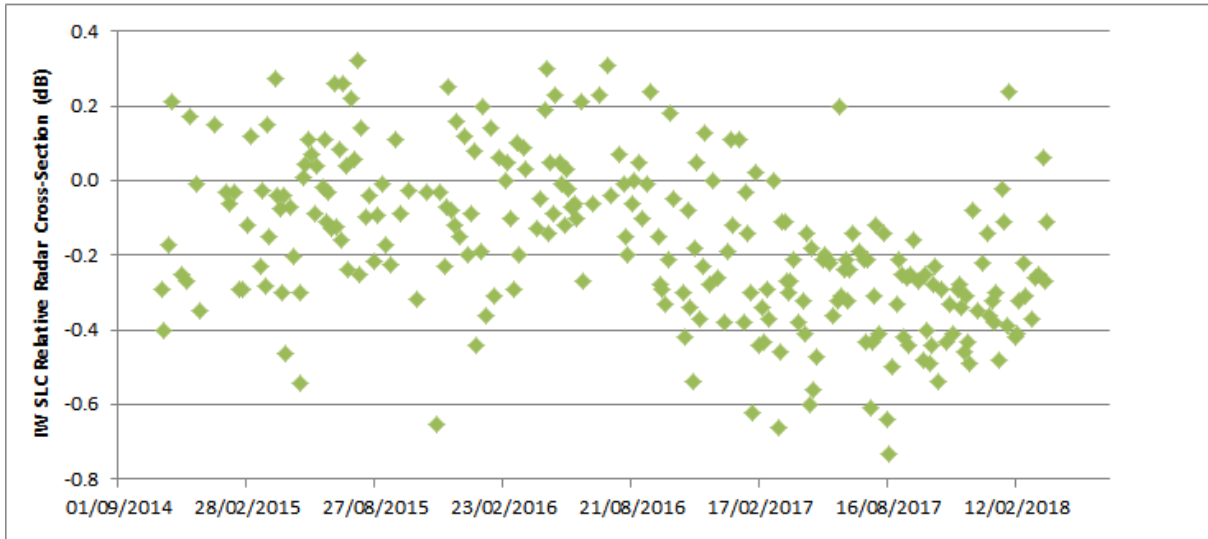


Figure 6 IW Long-Term Relative Radar Cross-Section

Figure 7 shows a recent IW VV Permanent Scatter Calibration series over Paris. The series covers almost 2 years from January 2016 to November 2017. The PSCAL results are consistent with the time series from the BAE corner reflector (Figure 6). In particular it can be noticed a small radiometric jump around March 2017 which could be related to the IPF 2.8.2 release.

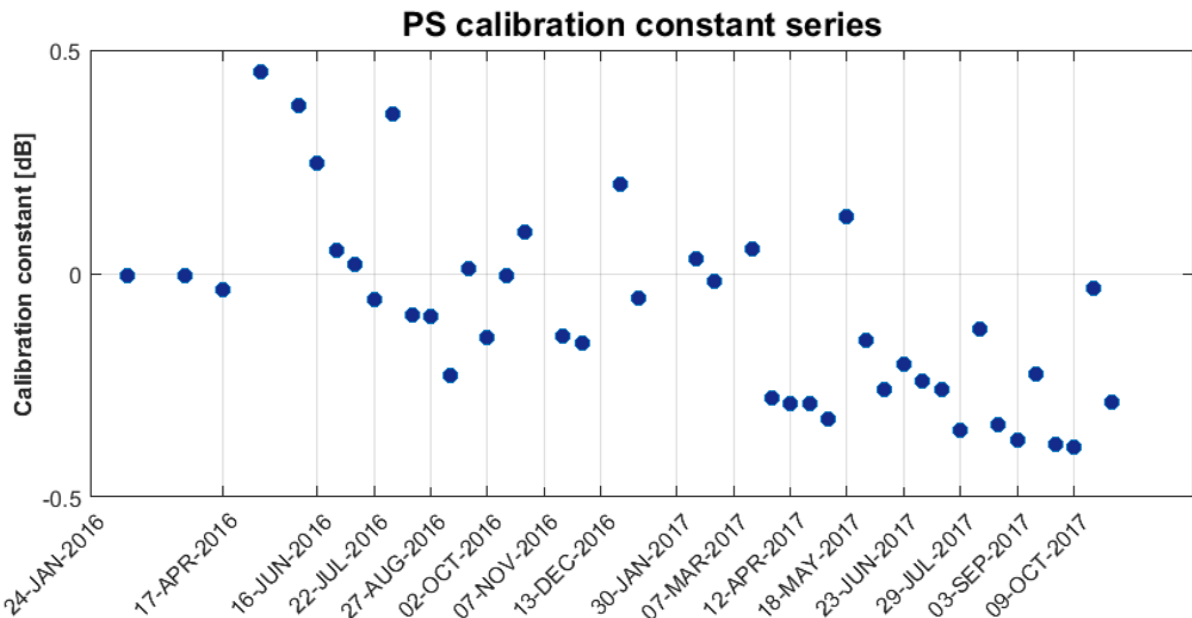


Figure 7 Permanent Scatter Calibration time series for TopSAR IW V/V over Paris.

6.2.3. Geometric Calibration

Figure 8 shows the absolute location error (ALE) based on eight S1-A SLC products from the IW acquisition mode acquired during the current reporting period (eight azimuth-adjacent product pairs, acquired on four separate dates). The points have been colour-coded and labelled to reflect the numerical labels assigned to them by Geoscience Australia. The products were analysed using both precise and near-real-time restituted orbit files, depending on their availability at the time of reporting. Corrections described in previous reports were made, including the atmospheric path delay (PD), the “intra-burst-dependent” range correction, the “bulk bistatic correction” (described previously) and a residual azimuth timing offset (the “bistatic residual” correction). Note that PD



correction depends on the local incident angle, which is considered here for the individual corner reflectors spanning the over-100km wide array.

Figure 8 shows the ALE scatter after the effects listed above have been corrected during post-processing. While a residual offset between the subswaths is still visible, this may be the result of even more subtle biases which are also currently under investigation.

The IW mode ALE plots indicate a nominal localisation performance; the range and azimuth ALE mean and standard deviations are annotated in the upper left corner of the figure subplot. The standard deviations are well within the specified 1-sigma ALE for IW mode products (3.33m, i.e. 10m at 3 sigma; see section 5.5.2.2 of the "GMES Sentinel-1 System Requirements Document," Ref. S1-RS-ESA-SY-0001, Iss. 3, Rev. 3).

Asc. IW SLC ALE over Surat array
(cycles 133-136, # products = 8, # dates = 4)

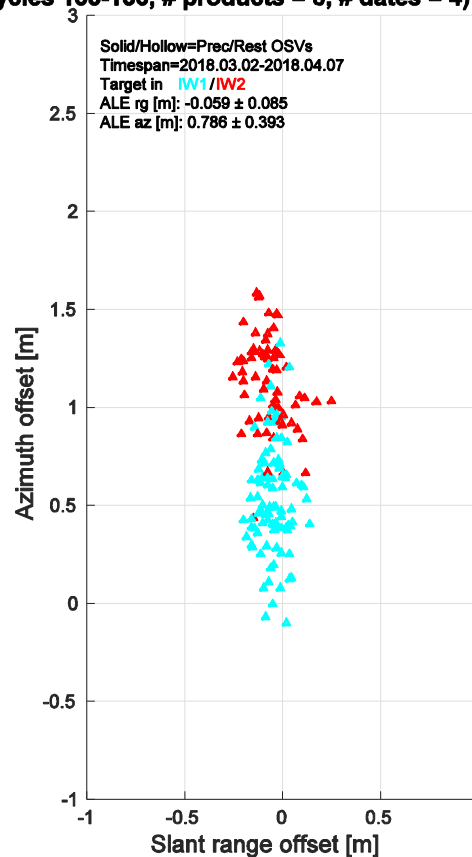


Figure 8 S1-A absolute localisation error based on four pairs of azimuth-adjacent S-1A IW SLC products acquired over the test site during the current reporting period. Path delay, intra-burst-dependent range delay and the most important azimuth timing corrections have been made. The small separation between the IW1 and IW2 groups may be the result of subtle processing effects which are currently under investigation.

6.2.4. Polarimetric Calibration

Table 12 gives the co-registration between the two polarisations of dual-polarisation products acquired during the reporting period (based in DLR transponder measurements). No channel distortion measurements were made during the reporting period.



Mode/Swath	Range Co-registration Accuracy (m)	Azimuth Co-registration Accuracy (m)	Channel Distortion (dB)
IW	0.03±0.09	0.00±0.00	

Table 12 Polarimetric Calibration Measurements

6.2.5. Elevation Antenna Patterns

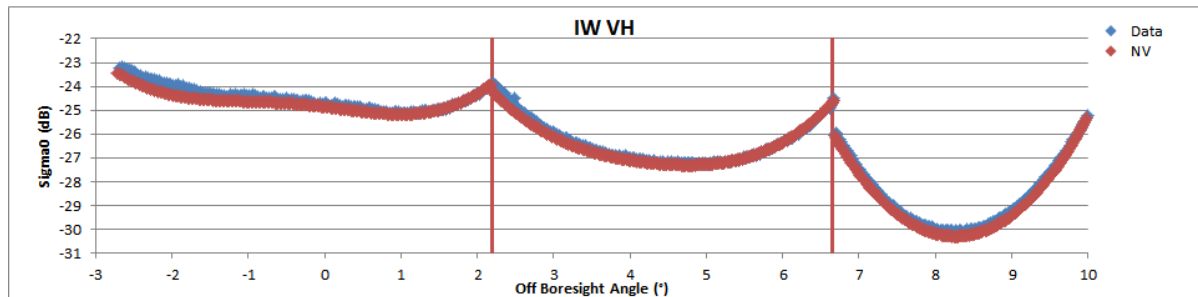
No S1-A Elevation Antenna Patterns (EAPs) were updated during the reporting period.

6.2.6. Azimuth Antenna Patterns

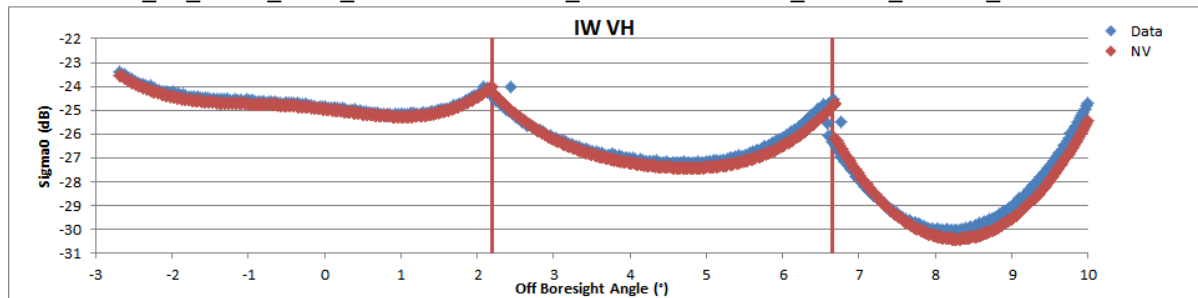
No Azimuth Antenna Patterns (AAPs) were updated during the reporting period.

6.2.7. Noise Equivalent Radar Cross-section

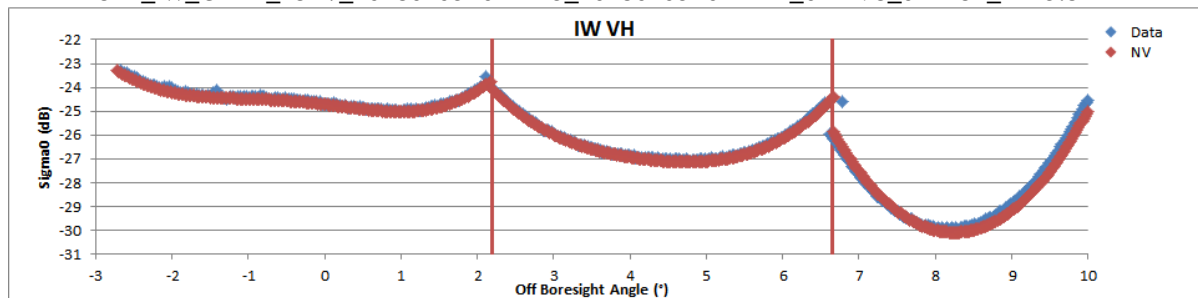
The following NESZ measurements were made during the reporting period following the IPF v2.90 installation. The blue curves are NESZ measurements while the red curves are noise vectors annotated within the product (used for de-noising). Given the close correspondence between the measurements and the noise vectors, good de-noising would be expected for these scenes.



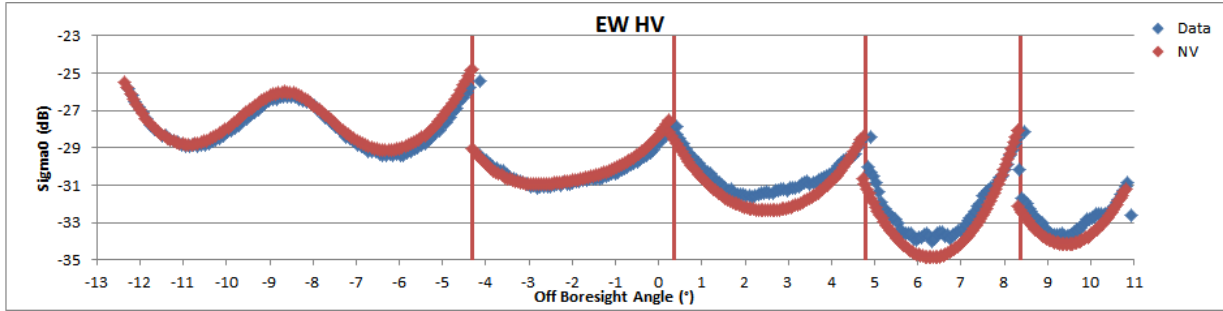
S1A_IW_GRDH_1SDV_20180327T042958_20180327T043027_021196_024722_5182.SAFE



S1A_IW_GRDH_1SDV_20180403T042143_20180403T042212_021298_024A51_11E3.SAFE



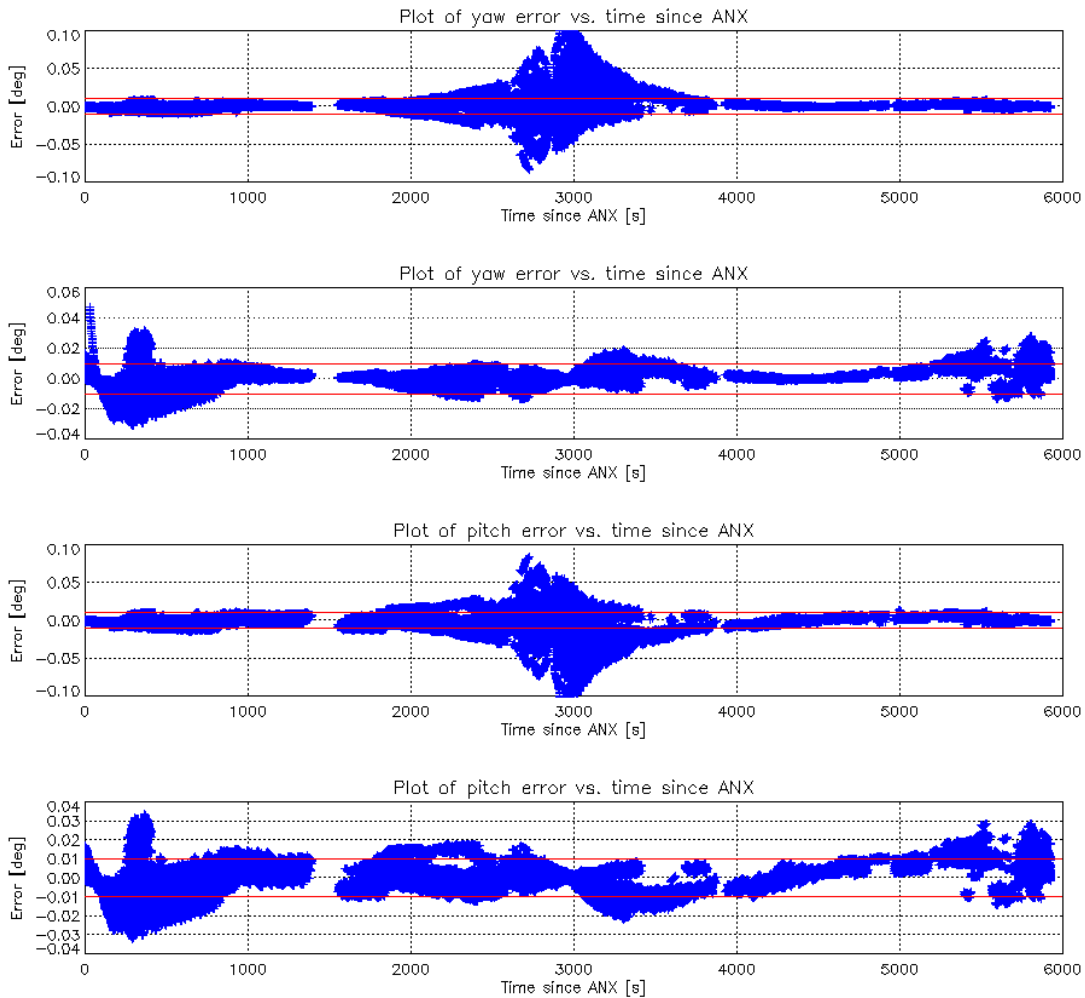
S1A_IW_GRDH_1SDV_20180403T163301_20180403T163326_021305_024A92_ABF9.SAFE



S1A_EW_GRDH_1SDH_20180401T082248_20180401T082330_021271_024968_3425.SAFE

6.2.8. Antenna Pointing

Figure 9 shows yaw, pitch and roll errors calculated for the reporting period against ascending node crossing time (ANX). The red horizontal lines show the nominal $\pm 0.01^\circ$ bounds for these attitude errors - points outside these bounds are normally due to orbit manoeuvres.



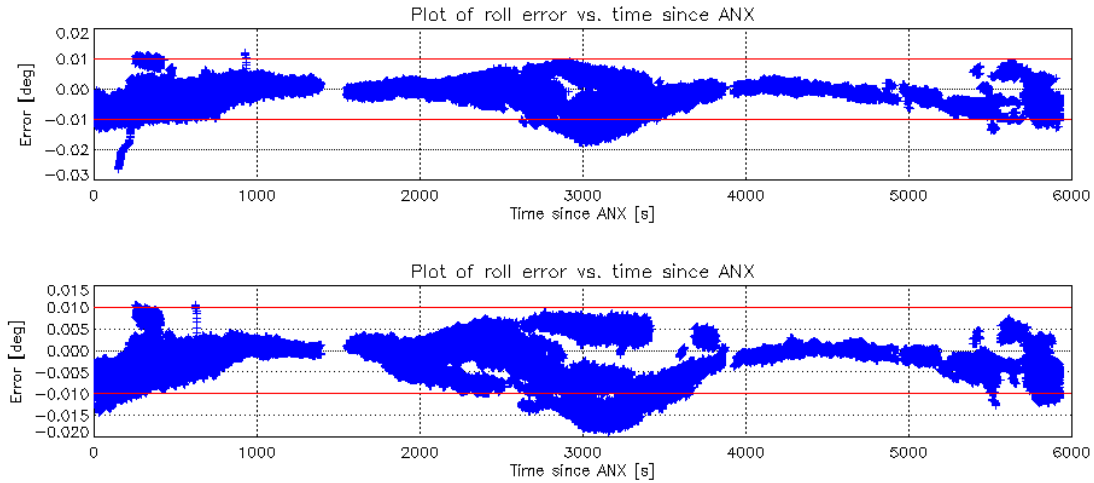
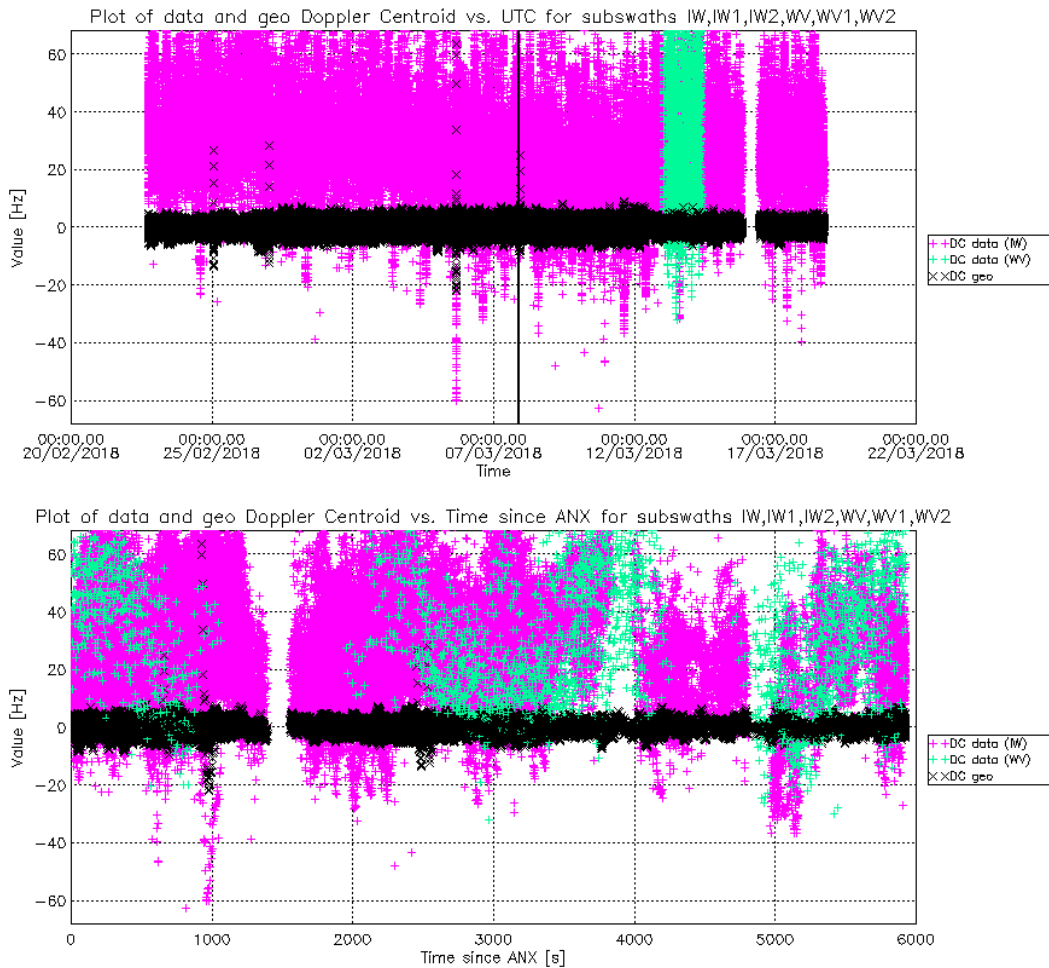


Figure 9 S1-A Yaw, Pitch and Roll Errors

Figure 10 shows the Doppler Centroid frequency as a function of date and ANX. The data has been derived from IW & WV data and from geometry. Note that it is expected that the Doppler estimation from WV mode data will have a higher standard deviation than from IW mode due to the Doppler estimation over the ocean will be noisier than over land. Table 13 gives the statistics based on Doppler Centroid derived from IW and WV data. A more detailed plot of Doppler Centroid frequency derived over land from SM, IW and EW products is shown in Figure 11.



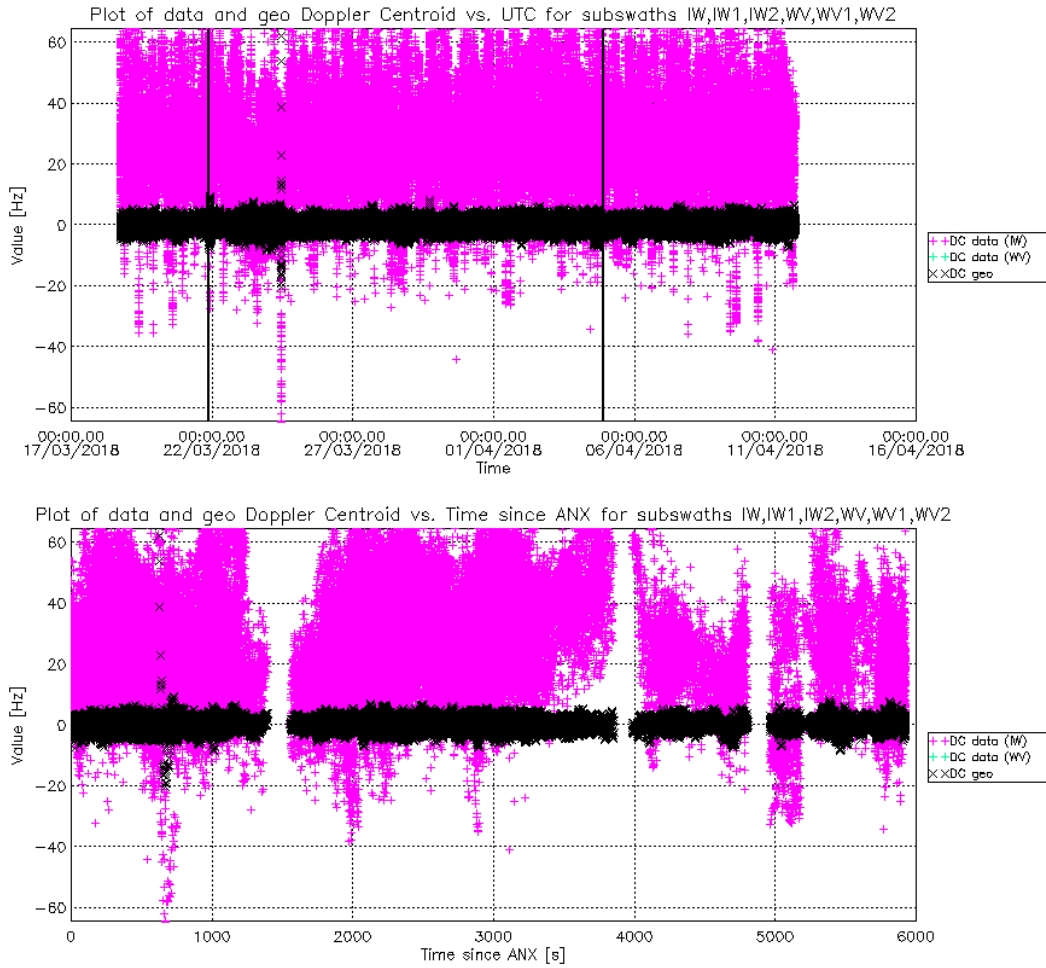


Figure 10 S1-A Doppler Centroid

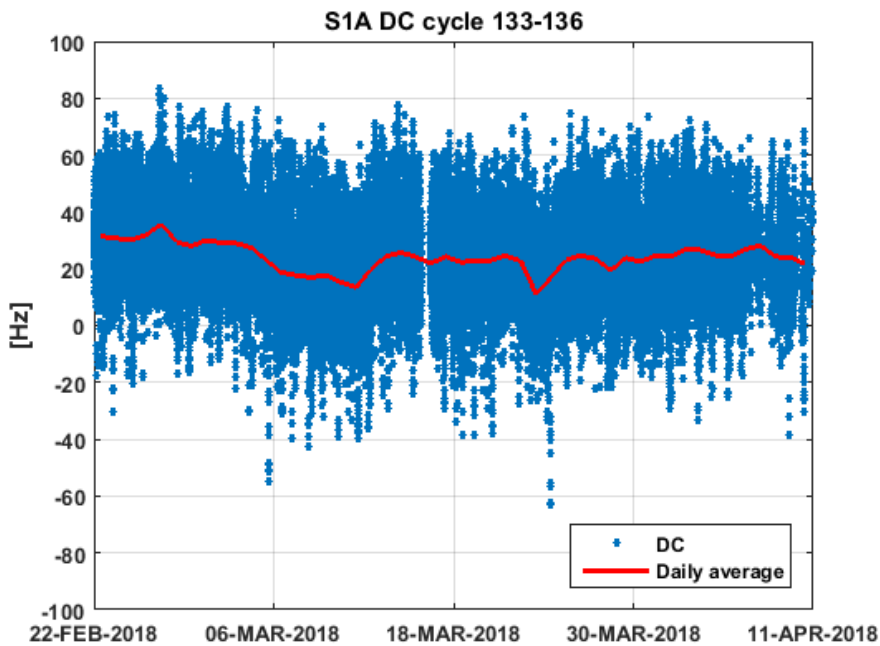


Figure 11 S1-A Doppler Centroid



	Min (Hz)	Mean (Hz)	Max (Hz)
Cycles 133 & 134	-108.83	28.46±14.78	165.97
Cycles 135 & 136	-72.01	26.91±14.02	144.66

Table 13 Doppler Centroid Statistics

6.2.9. Summary of Anomalies

There were no anomalies during the reporting period.

6.2.10. Quality Disclaimers

No L1 product quality disclaimers were issued during the reporting period (see Appendix E for a list of issued and prepared quality disclaimers). A full list of issued quality disclaimers can also be found on the [QC Web site](#).



Appendix A - List of Acronyms

AAP	Azimuth Antenna Pattern
AD	Applicable Document
ADF	Auxiliary Data File
ALE	Absolute Localisation Accuracy Error
ANX	Ascending Node Crossing Time
EAP	Elevation Antenna Pattern
EW	Extra Wide Swath
IPF	Instrument Processing Facility
IRF	Impulse Response Function
IW	Interferometric Wide Swath
NESZ	Noise Equivalent Sigma0 Zero
PD	Path Delay
PSCAL	Permanent Scatter Calibration
RD	Reference Document
RDB	Radar Data Base
Rx	Receive
SM	Stripmap
TBC	To be confirmed
TBD	To be defined
TRM	Transmit Receive Module
Tx	Transmit
WV	Wave Mode



Appendix B - S1-A Transmit Receive Module Failures

The following S1-A antenna TRM have failed since the S1-A launch:

TRM	Description	Date of Failure
Tile 4, Row 11	Tx, H & V	05-May-2014
Tile 4, Row 12	Tx, H & V	05-May-2014
Tile 4, Row 11	Rx, V	05-May-2014
Tile 4, Row 12	Rx, V	05-May-2014
Tile 4, Row 12	Rx, H	09-June-2014
Tile 5, all TRM failures (intermittent)	Rx, H & V	Between 18-Oct-2014, 15:29:30 UT and 20-Jan-2015, 19:04:54 UT
Tile 5, all TRM failures (intermittent)	Rx, H & V	Between 18-Mar-2015, 04:09:00 UT and 20-Mar-2015, 11:46:30 UT
Tile 5, all TRM failures (intermittent)	Rx, H & V	Between 26-Mar-2015, 16:20:00 UT and 28-Mar-2015, 02:50:30 UT
Tile 12, Row 16 (intermittent)	Tx V & Rx V	Between 16-Apr-2015 and 18-Apr-2015
Tile 5, all TRM failures (intermittent)	Rx, H & V	Between 18-Apr-2015, 17:40:21 UT and 24-Apr-2015, 17:48:08 UT
Tile 12, Row 16 (intermittent)	Tx V & Rx V	Between 20-Apr-2015 and 28-Apr-2015
Tile 5, all TRM failures (intermittent)	Rx, H & V	Between 25-Apr-2015 17:37:37 UT and 30-Apr-2015, 23:01:11 UT
Tile 4, Row 11	Rx H	29-Apr-2015, 21:57:30 UT
Tile 12, Row 16 (intermittent)	Tx V & Rx V	Between 01-May-2015 and 04-May-2015
Tile 5, all TRM failures (intermittent)	Rx, H & V	Between 05-May-2015, 05:12:51 UT and 06-May-2015, 00:44:43 UT
Tile 12, Row 16	Tx V & Rx V	18-May-2015, 22:33:36 UT
Tile 5, all TRM failures	Rx, H & V	Between 26-May-2015, 19:06:00 UT and 27-May-2015, 06:07:00 UT
Tile 5, all TRM failures	Rx, H & V	Between 06-Jun-2015, 06:35:00 UT and 14-July-2015, 10:43:00 UT
Tile 5, all TRM failures	Rx, H & V	Between 17-July-2015, 19:07:00 UT and 21-July-2015, 11:58:00 UT
Tile 11, Rows 1 to 10	Tx H, Tx V	16 June -27 June 2016
Tile 11	See below	

On the 16th October 2017 the S-1A antenna was reconfigured to optimize the electronic operation after the tile 11 issue on June 2016. The new antenna configuration, only related to the tile 11, was



captured in RDB#6. From the SAR data point of view, the new antenna status is not much different from the previous one and the only observed effects are a slight increase of the PG (less than 0.1 dB) and a modification of the EAP from the S-1 AM (lower then ± 0.1 dB).



Appendix C - S1-A Instrument Unavailability

The S1-A instrument has been unavailable during the following periods since S-1A launch:

Start Date/Time	End Date/Time	MPC Reference	Summary
26/04/2014 11:56	29/04/2014 12:13	SOB-23	Sentinel-1A Unavailability - Instrument Anomaly
29/05/2014 14:00	02/06/2014 17:00	SOB-27	Sentinel-1A Unavailability - Spacecraft Anomaly
06/07/2014 05:04	08/07/2014 15:22	SOB-39	Sentinel-1A Unavailability - Spacecraft Anomaly
21/07/2014 03:30	23/07/2014 08:35	SOB-40	Sentinel-1A Unavailability - Instrument Switch OFF for test
12/08/2014 09:37	12/08/2014 15:31	SOB-47	Sentinel-1A Unavailability - Onboard planned operation
21/08/2014 07:59	21/08/2014 15:29	SOB-49	Sentinel-1A Unavailability - Instrument Anomaly
25/08/2014 09:49	25/08/2014 17:50	SOB-50	Sentinel-1A Unavailability - SAR Instrument
03/09/2014 08:30	04/09/2014 15:11	SOB-53	Sentinel-1A Unavailability - SAR Instrument
20/09/2014 22:30	21/09/2014 12:06	SOB-62	SAR anomaly from 20/09 at 22:30 UTC to 21/09 12:06 UTC
23/09/2014 08:00	23/09/2014 20:00	SOB-60	S1PDGS - SAR & X-Band downlink unavailability on Tuesday 23rd from 08:00 CET to 20:00 CET
26/09/2014 21:40	27/09/2014 09:42	SOB-63	SAR instrument unavailable between 26/09/2014 21.40.48 UTC and 27/09/2014 09.42.38 UTC
29/09/2014 14:56	30/09/2014 15:17	SOB-64	SAR instrument unavailability from 29/09/2014 16.54 UTC to 30/09/2014 at 15.17 UTC.
06/10/2014 10:51	06/10/2014 14:05	SOB-70	Sentinel-1A Unavailability - SAR Anomaly
07/10/2014 06:30	07/10/2014 21:30	SOB-69	Sentinel-1A Unavailability - planned maintenance
10/10/2014 21:52	11/10/2014 11:03	SOB-73	Sentinel-1A Unavailability - SAR anomaly
13/10/2014 08:00	13/10/2014 12:48	SOB-71	Sentinel-1A Unavailability - Planned maintenance
19/11/2014 10:20	19/11/2014 14:50	SOB-91	Sentinel 1A unavailability
29/12/2014 20:45	30/12/2014 11:33	SOB-99	Sentinel-1A Unavailability
20/01/2015 07:30	20/01/2015 18:00	SOB-112	Sentinel-1A Unavailability - Planned maintenance



Start Date/Time	End Date/Time	MPC Reference	Summary
01/02/2015 07:50	02/02/2015 16:26	SOB-116	Sentinel-1A unavailability from 01/02/2015 7h50 to 02/02/2015 16h27
17/02/2015 19:56	18/02/2015 16:02	SOB-118	Sentinel-1A Unavailability - since 17/02/15 evening to 18/02/15 afternoon
19/02/2015 13:29	20/02/2015 10:15	SOB-121	Sentinel-1A unavailability from 19/02/2015 13h29 to 20/02/2015 10h15
14/04/2015 08:30	14/04/2015 17:00	SOB-147	Sentinel-1A unavailability planned on 14/04/2015 for maintenance
09/05/2015 23:19	10/05/2015 15:39	SOB-159	Sentinel-1A unavailability on 10/05/2015
19/05/2015 05:00	19/05/2015 12:00	SOB-168	Sentinel-1A planned unavailability on 19/05/2015 (RDB#4 uplink onboard)
28/05/2015 04:00	28/05/2015 14:30	SOB-170	Planned Sentinel-1A unavailability on 28/05/2015 for maintenance purpose
20/06/2015 15:30	21/06/2015 13:00	SOB-176	Sentinel-1A unavailability on 20 and 21/06/2015
22/07/2015 06:35	22/07/2015 08:21	SOB-206	Sentinel-1A Planned Unavailability (RDB#5)
03/08/2015 02:37	03/08/2015 18:33	SOB-207	Sentinel-1A Unavailability from orbit 7093 to 7101
04/08/2015 04:52	04/08/2015 13:47	SOB-208	Sentinel-1A Unavailability from orbit 7103 to 7114
04/08/2015 23:44	05/08/2015 11:20	SOB-209	Sentinel-1A Unavailability from orbit 7120 to 7128
09/08/2015 21:22	10/08/2015 16:14	SOB-210	Sentinel-1A Unavailability from orbit 7192 to 7204
04/09/2015 16:54	05/09/2015 11:08	SOB-214	Sentinel-1A Unavailability from 04/09 to 05/09/2015
23/09/2015 07:20	23/09/2015 11:56	SOB-222	Sentinel-1A Unavailability from orbit 7840 to 7842
19/10/2015 16:28	20/10/2015 07:27	SOB-226	Sentinel-1A Unavailability from 19/10 to 20/10/2015
21/10/2015 14:54	22/10/2015 07:12	SOB-227	Sentinel-1A Unavailability from 21/10 to 22/10/2015
05/11/2015 16:50	06/11/2015 12:20	SOB-229	Sentinel-1A Unavailability from 05/11 to 06/11/2015
07/11/2015 17:53	08/11/2015 12:10	SOB-230	Sentinel-1A Unavailability from 07/11 to 08/11/2015
18/11/2015 07:40	18/11/2015 12:28	SOB-233	Sentinel-1A Unavailability on 18/11/2015
29/11/2015 22:54	30/11/2015 11:10	SOB-251	Sentinel-1A Unavailability from 29/11 to 30/11/2015
10/12/2015 07:30	10/12/2015 13:00	SOB-252	Sentinel-1A Planned unavailability on 10/12/2015



Start Date/Time	End Date/Time	MPC Reference	Summary
11/12/2015 02:30	11/12/2015 16:00	SOB-253	Sentinel-1A Unavailability on 11/12/2015
02/01/2016 04:45	02/01/2016 15:14	SOB-255	Sentinel-1A Unavailability on 02/01/2016
16/01/2016 14:59	16/01/2016 19:57	SOB-257	Sentinel-1A Unavailability on 16/01/2016
21/02/2016 18:17	22/02/2016 10:51	SOB-310	Sentinel-1A Unavailability from 21/02/2016 to 22/02/2016
13/03/2016 08:23	13/03/2016 16:14	SOB-332	Sentinel-1A Unavailability on 13/03/2016
15/03/2016 07:46	15/03/2016 09:36	SOB-340	Sentinel-1A Planned Maintenance on 15/03/2016
06/05/2016 21:17	07/05/2016 14:27	SOB-389	Sentinel-1A Unavailability from 06/05/2016 to 07/05/2016
22/05/2016 14:51	22/05/2016 18:11	SOB-411	Sentinel-1A Unavailability on 22/05/2016
16/06/2016 05:59	16/06/2016 13:57	SOB-447	Sentinel-1A Unavailability on 16/06/2016
16/06/2016 16:45	17/06/2016 11:26	SOB-448	Sentinel-1A Unavailability between 16/06/2016 and 17/06/2016
17/06/2016 11:45	27/06/2016 16:32	SOB-467	Sentinel-1A Unavailability between 17/06/2016 and 27/06/2016
02/07/2016 04:52	02/07/2016 13:23	SOB-476	Sentinel-1A Unavailability on 02/07/2016
10/07/2016 06:39	10/07/2016 17:51	SOB-483	Sentinel-1A Unavailability on 10/07/2016
11/07/2016 21:32	12/07/2016 12:05	SOB-507	Sentinel-1A Unavailability on 11/07/2016
27/07/2016 07:49	27/07/2016 15:42	SOB-508	Sentinel-1A Unavailability on 27/07/2016
27/08/2016 23:58	28/08/2016 09:45	SOB-533	Sentinel-1A Unavailability from 27/08/2016 to 28/08/2016
24/11/2016 20:38	25/11/2016 11:34	SOB-614	Sentinel-1A Unavailability from 24/11/2016 to 25/11/2016
04/12/2016 06:52	04/12/2016 11:07	SOB-624	Sentinel-1A Unavailability on 04/12/2016
16/06/2017 09:09	16/06/2017 12:31	SOB-751	Sentinel-1A Unavailability on 16/06/2017
17/06/2017 11:43	17/06/2017 14:43	SOB-752	Sentinel-1A Unavailability on 17/06/2017
21/06/2017 14:09	21/06/2017 17:35	SOB-753	Sentinel-1A Unavailability on 21/06/2017



Start Date/Time	End Date/Time	MPC Reference	Summary
07/07/2017 02:20	07/07/2017 10:29	SOB-758	Sentinel-1A Unavailability on 07/07/2017
03/08/2017 13:30	03/08/2017 14:07	SOB-776	Sentinel-1A Unavailability on 03/08/2017
01/10/2017 12:06	01/10/2017 20:01	SOB-796	Sentinel-1A Unavailability on 01/10/2017
25/10/2017 08:25	25/10/2017 10:15	SOB-817	Sentinel-1A planned Unavailability on 25/10/2017
02/02/2018 14:27	02/02/2018 16:13	SOB-854	Sentinel-1A Unavailability on 02/02/2018
15/03/2018 20:06	16/03/2018 10:25	SOB-888	Sentinel-1A Unavailability between 15/03/2018 and 16/03/2018



Appendix D - S1-A Auxiliary Data Files

The following is a full list of currently applicable ADF updates:

Instrument ADF (AUX_INS)

ADF	Update Reason
S1A_AUX_INS_V20140406T133000_G20180313T095009.SAFE	Update for usage with IPF V290: - schemaVersion updated to 3.3 - new fields (correctBistaticDelay Method, estimateNoiseEquivalent PowerFlag) added. Related to RDB#1.
S1A_AUX_INS_V20140616T133500_G20180313T100039.SAFE	As above but related to RDB#2.
S1A_AUX_INS_V20140908T000000_G20180313T100906.SAFE	As above but related to RDB#3.
S1A_AUX_INS_V20150519T120000_G20180313T101559.SAFE	As above but related to RDB#4.
S1A_AUX_INS_V20150722T120000_G20180313T102353.SAFE	As above but related to RDB#5.
S1A_AUX_INS_V20160627T000000_G20180313T103836.SAFE	As above but related to RDB#5.
S1A_AUX_INS_V20171017T080000_G20180313T104658.SAFE	As above but related to RDB#6.

Calibration ADF (AUX_CAL)

ADF	Update Reason
S1A_AUX_CAL_V20140406T133000_G20180313T095442.SAFE	Revised SM, IW and EW noise calibration factors applicable for IPF V290. Related to RDB#1.
S1A_AUX_CAL_V20140616T133500_G20180313T100218.SAFE	As above but related to RDB#2.
S1A_AUX_CAL_V20140908T000000_G20180313T101017.SAFE	As above but related to RDB#3.
S1A_AUX_CAL_V20150519T120000_G20180313T101709.SAFE	As above but related to RDB#4.
S1A_AUX_CAL_V20150722T120000_G20180313T102457.SAFE	As above but related to RDB#5.
S1A_AUX_CAL_V20160627T000000_G20180313T103934.SAFE	As above but related to RDB#5.
S1A_AUX_CAL_V20171017T080000_G20180313T104820.SAFE	As above but related to RDB#6.

L1 Processor Parameters ADF (AUX_PP1)

ADF	Update Reason
S1A_AUX_PP1_V20140406T133000_G20180313T094731.SAFE	Update for usage with IPF V290: - schemaVersion updated to 3.3 - new fields (correctBistaticDelay Method, estimateNoiseEquivalent PowerFlag) added - processing gains for SM and WV modes, L1 and L2 products, updated according to corresponding



	<p>re-calibration activities</p> <ul style="list-style-type: none"> - azimuth processing bandwidths for S1, S3 and S5 modes, SLC products, updated - azimuth hamming windows for SM modes, SLC and GRD products, updated. <p>Related to RDB#1.</p>
S1A_AUX_PP1_V20140616T133500_G20180313T095922.SAFE	As above but related to RDB#2.
S1A_AUX_PP1_V20140908T000000_G20180313T100753.SAFE	As above but related to RDB#3.
S1A_AUX_PP1_V20150519T120000_G20180313T101449.SAFE	As above but related to RDB#4.
S1A_AUX_PP1_V20150722T120000_G20180313T102236.SAFE	As above but related to RDB#5.
S1A_AUX_PP1_V20171017T080000_G20180315T153822.SAFE	Fixing of an issue on the noise vector annotation of S-1A products generated from LON with updated content. Related to RDB#6.

L2 Processor Parameters ADF (AUX_PP2)

ADF	Update Reason
S1A_AUX_PP2_V20140406T133000_G20151124T084156.SAFE	Update to handle long swell from WV (better resolution of long swell in OSW products). Related to RDB#1.
S1A_AUX_PP2_V20140616T135500_G20151124T084238.SAFE	Update to handle long swell from WV (better resolution of long swell in OSW products). Related to RDB#2.
S1A_AUX_PP2_V20140915T100000_G20151124T084308.SAFE	Update to handle long swell from WV (better resolution of long swell in OSW products). Related to RDB#3.
S1A_AUX_PP2_V20150519T120000_G20151124T084337.SAFE	Update to handle long swell from WV (better resolution of long swell in OSW products). Related to RDB#4.
S1A_AUX_PP2_V20150722T120000_G20151124T084401.SAFE	Update to handle long swell from WV (better resolution of long swell in OSW products). Related to RDB#5.
S1A_AUX_PP2_V20171017T080000_G20171013T101254.SAFE	Update of ADF to be compliant with RDB#6.

Simulated Cross Spectra ADF (AUX_SCS)

ADF	Update Reason
S1__AUX_SCS_V20140402T000000_G20160413T103855.SAFE	Introduction of AUX_SCS. Related to RDB#1.
S1__AUX_SCS_V20140616T133700_G20160413T104849.SAFE	Introduction of AUX_SCS. Related to



	RDB#2.
S1__AUX_SCS_V20140908T000000_G20160413T105124.SAFE	Introduction of AUX_SCS. Related to RDB#3.
S1__AUX_SCS_V20150519T120000_G20160413T105253.SAFE	Introduction of AUX_SCS. Related to RDB#4.
S1__AUX_SCS_V20150722T120000_G20160413T105410.SAFE	Introduction of AUX_SCS. Related to RDB#5.
S1__AUX_SCS_V20171017T080000_G20171016T150910.SAFE	Update of ADF to be compliant with RDB#6.



Appendix E - S-1A Quality Disclaimers

The following Quality Disclaimers have been prepared since the S1-A launch:

Number	Description	Start Validity Date	End Validity Date	Issue Status
1	S1A_WV_SLC_1S products filled with zero (black products)	2014-09-30 15:17:26 UT	2014-10-03 03:34:01 UT	Issued
2	Failure on tile amplifier #5 of the receiving antenna	2014-10-18 15:29:30 UT	2015-01-20 19:04:54 UT	Issued
3	Level 1 products processed with incorrect gains	2014-09-30 15:17:26 UT	2014-10-03 04:07:54 UT	Issued
4	Incorrect Cycle Number and Relative orbit number in products processed in PAC2/DPA	2014-12-09 11:45:25 UT	2015-01-21 03:53:00 UT	Issued
5	Failure on Tile amplifier #5 of the receiving antenna from 18/03/2015 and 20/03/2015	2015-03-18 04:09:00 UT	2015-03-20 11:46:30 UT	Issued
6	Failure on Tile amplifier #5 of the receiving antenna from 26/03/2015 to 28/03/2015	2015-03-26 16:20:00 UT	2015-03-28 02:50:30 UT	Issued
7	Failure on Tile amplifier #5 of the receiving antenna from 18/04/2015 to 24/04/2015	2015-04-18 17:40:21 UT	2015-04-24 17:48:08 UT	Issued
8	Failure on Tile amplifier #5 of the receiving antenna from 25/04/2015 to 30/04/2015	2015-04-25 17:37:37 UT	2015-04-30 23:01:11 UT	Issued
9	Failure on Tile amplifier #5 of the receiving antenna from 05/05/2015 to 06/05/2015	2015-05-05 05:12:51 UT	2015-05-06 00:44:43 UT	Issued
10	Denosing vectors not qualified	2014-10-03 00:00:00 UT	2015-07-03 06:33:15 UT	Issued
11	S-1 L2 OCN product preliminary qualified	2015-07-02 00:31:03 UT	2030-01-01 00:00:00 UT	Issued
12	Failure of TRM #5 between 2015-05-26 and 2015-05-27.	2015-05-26 21:10:28 UT	2015-05-27 05:53:00 UT	Issued
13	Failure of TRM #5 between 2015-06-06 and 2015-07-14	2015-06-06 06:44:28 UT	2015-07-14 07:50:55 UT	Issued
14	Invalid radiometric calibration of WV L1 and L2 products	2015-03-19 02:29:22 UT	2015-07-03 08:09:02 UT	Issued
15	Failure of TRM #5 from 2015-07-17 to 2015-07-21	2015-07-17 18:58:56 UT	2015-07-21 12:04:57 UT	Issued
16	Invalid Orbit Number at UPA - before 2014-10-10	2014-10-03 00:00:00 UT	2014-10-10 06:28:50 UT	Issued
17	Incorrect Cycle Number in S1-A Products acquired between 26/01/2016 and 04/02/2016.	2016-01-26 21:17:42 UT	2016-02-04 16:29:59 UT	Issued
18	Invalid annotation of NSSDC identifier of Sentinel-1A between April 2014 and July 5th 2016	2014-09-30 15:17:26 UT	2016-07-05 10:16:00 UT	Issued
21	Issue on geolocation of Sentinel-1A SM SLC products with IPF v2.71	2016-05-11 21:02:59 UT	2016-08-22 21:35:50 UT	Issued



22	Invalid annotation of SSPPDU in the manifest of S-1A products	2014-09-30 15:17:26 UT	ongoing	Issued
24	Incorrect Cycle Number in S1-A Products acquired between 12/01/2017 and 24/01/2017	2017-01-12 00:18:59 UT	2017-01-24 06:52:28 UT	Issued
26	S-1A products processed with invalid Restituted Orbit Files (AUX_RESORB) between 2017-09-06 and 2017-09-07	2017-09-06 18:57:47 UT	2017-09-07 08:07:45 UT	Issued
28	S-1A L2 OCN products provide reverse OSW wind direction respect to the specification	2015-11-24 12:03:51 UT	ongoing	Issued
30	Issue on the noise vector annotation of S-1A products generated from LON with updated content	2018-03-13 01:00:42 UT	2018-03-15 14:01:26 UT	Issued
32	S-1A mis synchronisation with impact on azimuth bandwidth synchronisation for InSAR applications	2015-05-17 00:03:40 UT	2015-05-18 23:14:45 UT	Issued
	Phase artefacts for products acquired over region with strong variations of terrain height in range direction			In preparation