



GOME Data Processor

Extraction Software User's Manual

Doc.No.: ER-SUM-DLR-GO-0045

Issue: 4

Date: 17 March 2009



	<i>Name, Function, Affiliation</i>	<i>Signature, Date</i>
prepared	S. Slijkhuis, Project Scientist, DLR-IMF	
released	D. Loyola, GOME Project Manager, DLR-IMF	

Additional Distribution List

<i>Function</i>	<i>Copies</i>	<i>Name</i>	<i>Affiliation</i>
Internal Development Team	4	B. Aberle N. Hao P. Valks W. Zimmer	DLR-IMF
Various		Available to the public via the internet	

Document Change Log

<i>Issue</i>	<i>Rev</i>	<i>Date</i>	<i>Sheet</i>	<i>Description of Change</i>
Draft		16.04.99	all	completely new, level 0>1b only
1		08.07.99	all	included comments from N. Schutgens (KNMI); updated level 0>1b to version 2.00; level 1>2 completely new
2		05.08.02	1-42	updated level 0>1b to version 2.20, changes mainly in spectral calibration
2	A	08.08.02	15,41	included comments from C. Zehner (ESRIN)
3		14.12.04	7,8 17,18,46,47 23,39 47 41,50	references, document history location of products and documents new BSDF correction algorithm note on level 2 format change release notes
3	A	24.03.06 (DRAFT)	11 17 19, 23, 24 30 40, 41 43	references installation directions for use FPA noise algorithm new reflectivity correction algorithm release notes
3	A	21.11.06	11 43 all	references release notes version numbering update to 3.00
3	B	02.02.07	8,11 23 43 all	document history, references degradation correction release notes version numbering update to 3.02
4		17.03.09	8,9,12 all 18 18 24 42 44 all	updated document history, abbreviations, references removed Level 2 part note: no downwards compatibility of version 4.00 installation instructions degradation correction file uses LUT update 'limitations' of degradation/BSDF correction release notes version numbering update to 4.00



1	Introduction	7
1.1	Purpose and Scope	7
1.2	Document Status and History	8
1.3	Document Overview	8
1.4	Abbreviations and Acronyms	9
1.5	Glossary	11
1.6	Reference Documents	12
2	Overview of Extraction Algorithms	14
2.1	Program Concept	14
2.2	Algorithms Overview	15
3	Instructions for use	18
3.1	Installation	18
3.2	Standard Level 1 Extraction	19
3.2.1	Earth-shine Radiance	19
3.2.2	Sun, Moon Observations	19
3.3	Special Options	20
3.3.1	Options to obtain product information	20
3.3.2	Options to steer the output	21
3.3.3	Options to select a subset of data	22
3.3.4	Options for scientific post-processing	23
3.3.5	Options to perform/omit calibration steps	25
4	Background Information on Algorithms	28
4.1	Overview of Calibration Procedures	28
4.1.1	Onground Calibration	28
4.1.2	Level 0 to 1 Processing of Calibration Constants	28
4.1.3	Correction for degradation	29
4.2	Apply Dark Signal	30
4.3	Correction for FPA noise	31
4.4	Apply PPG	32
4.5	Apply Spectral Calibration Parameters	33
4.6	Apply Straylight Correction	35
4.7	Apply BSDF	36
4.8	Apply Radiance Response	37
4.9	Apply polarisation correction	38
4.10	Apply Degradation Parameters or azimuth asymmetry of the BSDF	41
4.11	Calculation of Errors	43
5	Appendix: Version history	44



1 Introduction

1.1 Purpose and Scope

The Global Ozone Monitoring Experiment (GOME) was originally conceived as a scaled-down version of the scanning spectrometer SCIAMACHY. It was given fast-track development status by ESA [G1], and was launched on 21 April 1995 on board the second European Remote Sensing Satellite (ERS-2).

GOME is a nadir-viewing spectrometer covering the range 240-790 nm in 4 spectral channels. In its normal, Earth observation mode it scans across-track in three steps. The field of view of each step may be varied in size from 40 km x 40 km to 320 km x 40 km. The mode with the largest footprint (three steps with a total swath width of 960 km x 40 km) provides global coverage at the equator within 3 days - this is the default mode of operation.

In addition to the on-line components at the ground stations, the GOME Data Processor (GDP) system [R6] is the operational off-line ground segment for GOME. The GDP was developed and implemented at DFD with the help of several scientific institutions [G2], and became operational in July 1996. It incorporates a Level 0 to 1 processing chain, the complete GOME data archive, a DOAS O₃ total column retrieval process (Level 1 to 2), and an image processing chain for the generation of higher-level products. The Level 1 and Level 2 data products are generated by DFD on behalf of ESA.

The Level 1 products (calibrated spectra) are generated in a sort of compressed form. The end-user has to apply an "extraction" software tool to obtain the final Level 1 data.

The purpose of this document is to provide an extended operation manual for these "extraction" software tools. This follows a request from several users who found the instructions for use as delivered on the GOME product FTP-site too concise.

This document does not contain a product format description. For that, the user is referred to the Product Specification Document [G4], which is also present on the product FTP-site.

1.2 Document Status and History

This fourth version of the document describes the status of the Level 0 to 1 Extraction software for version 4.00; the Level 1 to 2 Extraction software is obsolete now that the Level 2 products are distributed in HDF-5, the corresponding parts of the document have been removed. Please note, that Level 0 to 1 processing software, extraction software, and degradation file are **not downwards compatible** to older versions. This is related to several changes in Level 0 to 1 data processing, including a format change of the version 4.00 Level 1b data product.

The third version of the document describes the status of the Level 0 to 1 Extraction software up to version 3.02; and the status of the Level 1 to 2 Extraction software up to version 4.10

The second version of the document describes the status of the Level 0 to 1 Extraction software up to version 2.20; the Level 1 to 2 Extraction software remains unchanged.

The first version of the document describes the status of the Level 0 to 1 Extraction software up to version 2.00 .

In addition a description is added of the Level 1 to 2 Extraction software, version 2.70 .

The draft version of this document has been prepared in April 1999 following user requests for more extended information on the Level 0 to 1 Extraction software. The document is based on the instructions for use on the product CD-ROM, on the on-line help of the software itself, and on the algorithm description [G3]. This draft version of the document describes the status of the extraction software up to version 1.50 .

1.3 Document Overview

Section 2 gives a overview of the program concept, and of the calibration steps used in Level 0 to 1 processing and extracting.

Section 3 is the main body of this document, describing the use of the Extraction software.

Installation and version control is described in Section 3.1; the standard use of the software is described in Section 3.2.

A large number of options exists to configure the output or execution of the extractor. These options are described in detail in Section 3.3 .

Background information on the instrument calibration used in the Level 0 to 1 processing is provided in Section 4. Although this information may be of interest to the normal user of GOME Level 1 data, it is not necessary for the normal operation of the software.

General calibration considerations are presented in Section 4.1. Subsequent sections provide detailed background information on the various calibration procedures.

A short overview of the software version history is given in the appendix.

1.4 Abbreviations and Acronyms

ADC	Analogue to Digital Converter
ADD	Architectural Design Document
BSDF	Bi-directional Scattering Distribution Function
BU	Binary Unit
DFD	Deutsches Fernerkundungsdatenzentrum
DLR	Deutsches Zentrum für Luft- und Raumfahrt e.V.
DOAS	Differential Optical Absorption Spectroscopy
D-PAC	German Processing and Archiving Centre
ERS	European Remote Sensing Satellite
ESTEC	European Space Centre of Technology
FCD	Fixed Calibration Data structure (Level 1 product)
FOV	Field of View
FPA	Focal Plane Assembly
FPN	Fixed Pattern Noise
FWHM	Full Width Half Maximum
GDF	General Distribution Function
GDP	GOME Data Processor
GOME	Global Ozone Monitoring Experiment
GPPR	Ground Processing Performance Requirement
GSAG	GOME Scientific Advisory Group
ICU	Instrument Control Unit
IFE	Institut für Fernerkundung der Universität Bremen
IFOV	Instantaneous Field of View
ILOS	Instantaneous Line of Sight
IMF	Institut für Methodik der Fernerkundung / Remote Sensing Technology Institute
I/O DD	Input/Output Data Definition
IT	Integration Time
KNMI	Koninklijk Nederlands Meteorologisch Instituut
LED	Light Emitting Diode
NRT	Near Real Time
OCRA	Optical Cloud Recognition Algorithm
PCA	Polarisation Correction Algorithm
PCD	Pixel-specific Calibration Data structure (Level 1 product)
PMD	Polarisation Measurement Device
PSD	Product Specification Document (contains Level 1, 2 data formats)
PPG	Pixel-to-Pixel Gain
ROCINN	Retrieval Of Cloud Information using Neural Networks
SAA	Southern Atlantic Anomaly
SAO	Smithsonian Astrophysical Observatory
SBT	Satellite Binary Time
SCIAMACHY	Scanning Imaging Absorption Spectrometer for Atmospheric Chartography
SLS	Spectral Light Source
SMR	Sun Mean Reference
SRD	Software Requirements Document
SRON	Space Research Organisation of The Netherlands
SVD	Singular Value Decomposition
SZA	Sun Zenith Angle
TOA	Top of Atmosphere

TPD	Technisch Physische Dienst
UV	ultra-violet
VIS	Visible

1.5 Glossary

Band (spectral-)

one of 6 (or 10) spectral bands referring to parts of an array detector:

band 1a and 1b cover the short-wavelength and long-wavelength part of channel 1 respectively,

band 2a and 2b cover the short-wavelength and long-wavelength part of channel 2,

band 3 and 4 are identical to channel 3 and 4.

In addition there are 4 'straylight' bands: two shortwave of band 1a, one longwave of band 1b, and one shortwave of band 2a. These 'straylight' bands are not part of the standard level 1 extracted data, but they are available on the level 1 product.

Channel

one of the 4 spectral channels containing an array detector, sometimes an expression like 'channel 1a' is used for 'band 1a' etc.

Extractor

a software tool (described in this manual) to inflate a Level 1 Product into Level 1 Data.

FPA crosstalk

a phenomenon which may cause a variation in detector signal related to the switching of coolers for the Focal Plane Assembly (detector housing).

Ground pixel

the footprint on the Earth's surface during one integration time.

Integration time pattern

specifies the integration time of each of the 6 bands

Level 1 Data

a data set (usually 1 orbit or a subset thereof) which contains the fully calibrated GOME (ir)radiance spectra.

Level 1 Product

the GOME data product from the ERS-2 ground segment; it contains the raw detector signals plus all information needed to convert these to calibrated (ir)radiance - this conversion is performed using the extraction software described in this manual.

Pixel

usually one pixel (spectral element) on the detector is meant; depending on the context this may also be shorthand for 'ground pixel'.

Pixel (sub-)type

denotes a certain geometry in the scan pattern; pixel type 0,1,2,3 refer to the East, Nadir, West and Backscan ground pixel, respectively.

Virtual pixel

a wavelength interval on the PMD detector which corresponds to the wavelength interval of the corresponding channel array detector pixel.

Virtual channel boundary

the pixel or wavelength which separates band 1a from 1b (or 2a from 2b); this can be set by macro-command from the ground operator.

1.6 Reference Documents

- [R1] Hiroshi Akima, "A new method of interpolation and smooth curve fitting based on local procedures", J. ACM, Vol. 17(4), 1970, 589-602
- [R2] Data Reduction from Experimental Histograms, W.R. Falk (University of Manitoba, Winnipeg, Canada), Nuclear Instruments and Methods in Physics Research 220 (1984) 473-478
- [R3] William H. Press et al., "Numerical Recipes in C", Cambridge University Press, 1994
- [R4] Jochen Stutz and Ulrich Platt, "Problems in using diode arrays for open path DOAS measurements of atmospheric species", Institut für Umweltphysik, Universität Heidelberg
- [R5] P. Stammes, "The seventh point polarisation algorithm, Internal Report" (GOME and SCIAMACHY), KNMI De Bilt, 1994
- [R6] D.Loyola, W.Balzer, B.Aberle, M.Bittner, K.Kretschel, E.Mikusch, H.Muehle, T.Ruppert, C.Schmid, S.Slijkhuis, R.Spurr, W.Thomas, T.Wieland, M.Wolfmueller, "Ground segment for ERS-2 GOME sensor at the German D-PAF", Proceedings of the Third ERS Symposium on "Space at the Service of our Environment", ESA SP-414, Vol. II, 591-596, Florence 1997
- [R7] P. Stammes, I. Aben, R.B.A. Koelemeijer, S. Slijkhuis, D.M. Stam, "GOME polarisation validation study", Proceedings of the Third ERS Symposium on "Space at the Service of our Environment", ESA SP-414, Vol. II, 669-674, Florence 1997
- [R8] K. Bramsted, M. Weber, J. Burrows (IFE/IUP univ. Bremen), "Radiance Jumps and PMDs in GOME", GOME workshop 24.06.1996
- [R9] C. Caspar, "GOME Dark Signal Characterisation", ER-TN-ESA-GO-0473, draft issue 1.0, 06.11.1995
- [R10] Hegels E., "ERS-2/GOME - Support, Progress Report", ER-TN-DLR-GO-0044, Issue 1, 29.1.1999.
- [R11] Aben I., C. Tanzi, E. Hegels and M. Eisinger, "GDAQI - GOME Data Quality Improvement", TN-GDAQI-001SR/99, Midterm report, Draft, April 1999.
- [R12] HDF5, Release 1, The National Center of Supercomputing Applications at the University of Illinois, Urbana-Champaign, IL, 1998
- [R13] Slijkhuis, S., "CHEOPS-GOME Study on seasonal effects on the ERS-2/GOME Diffuser BSDF", DLR report CH-TN-DLR-GO-0001, Issue 1, May 2004
- [R14] Krijger, J.M., Aben, I., Landgraf, J.,: CHEOPS-GOME: WP2.1: Study of Instrument Degradation, ESA SRON-EOS/RP/05-018 Tech. rep., 2005
- [R15] M. Coldewey-Egbers, S.Slijkhuis, B.Aberle, D.Loyola: Long-term analysis of GOME in-flight calibration parameters and instrument degradation, Applied Optics 47, p.4749, 2008

GOME project documentation and study reports

- [G1] GOME Interim Science Report, edited by T. D. Guyenne and C. J. Readings, SP-1151, ESA publications Division, ESTEC, Noordwijk NL, ISBN 92-9092-041-6 (1993)
- [G2] GOME Users Manual, ESA SP-1182, ESA/ESTEC, Noordwijk, The Netherlands (1996)
- [G3] GOME Level 0 to 1b Algorithm Description, ER-TN-DLR-GO-0022, Issue 5/B, 07.2002.
- [G4] Product Specification Document of the GOME data processor, ER-TN-DLR-GO-0016, Iss./Rev. 5/A, March 2009 (the latest version is included on the product FTP-site)
- [G5] CHEOPS-GOME ATBD Level 0 to 1 Processing Update, CH-TN-DLR-GO-0003, Issue

1/B, 05.06.2006

2 Overview of Extraction Algorithms

2.1 Program Concept

There are four basic calibration steps needed to convert the instrument binary data into calibrated physical quantities.

1. Signal processing: correction for dark signal, FPA crosstalk, pixel-to-pixel gain, and straylight
2. Wavelength calibration: assigning to each detector pixel its associated wavelength
3. Radiance calibration: conversion of the corrected detector signals of the earth-shine spectra to radiance units; this includes polarisation correction
4. Irradiance calibration: conversion of the corrected detector signals of the solar spectra to irradiance units; this includes correction for the BSDF of the diffuser plate.

Furthermore the measurements have to be geolocated, i.e. the geographical position of the footprint on the Earth's surface has to be determined from the instrument's scan mirror angle and from the spacecraft data.

Performing these calibration steps is the task of level 0 to 1 processing. In order to keep the data product as small as possible, the GOME processing is done in two steps. All necessary calibration constants are processed from the calibration measurements in the operational processing from level 0 to 1. The Level 1 Product contains the raw detector signals (binary ADC units) of the science measurements plus calibration constants.

The end-user has to run an Extraction program which applies the calibration constants to the data; this inflates the Level 1 Product to a much larger Level 1 data set containing fully calibrated data (the difference is that the Product contains calibration data plus raw signals as 2-byte integers; the extracted data contain calibrated signals as 4-byte floats plus three 4-byte floats for wavelength, accuracy error and precision error).

Apart from product size considerations, an additional advantage of this procedure is that the user can optionally omit certain calibrations to investigate their influence (or perform the calibration himself), and that by optionally filtering out only a subset of the data (i.e. geographical coverage or wavelength range) the final level 1 data may be kept as small as possible.

The Extraction program with its different calibration options is the subject of this documentation.

2.2 Algorithms Overview

In this and the following section, summaries of algorithms are given without references (these will be given in the detailed background sections). For the sake of completeness, the summaries given include both the Level 0 to 1b operational processing (i.e. generation of the Level 0 to 1b product) and the Extraction algorithms; the latter are described further in detail in this document, see Section 4.

Noted in italics is if the algorithm belongs to the operational Level 0 to 1b processing (*OP*) or to the Extraction program (*E*).

The sequence below also reflects the sequence of signal processing for the Extraction software. This is illustrated by the data flow diagram of the Extraction software in Figure 1.

Conversion to Engineering units and time correlation (OP)

Calculate orbit and timing information and convert raw housekeeping data into physical quantities (e.g. optical bench temperatures).

Calculate Geolocation (OP)

In the geolocation processing, the instrument scan angle and time information is converted to geographical coordinates, and the solar illumination condition is determined. This relies heavily on the use of ESA's Orbit Propagator, whose routines will not be explained in detail here.

Calculate Dark Signal (OP)

The algorithms describe how to use the Dark Measurements to derive calibration constants for FPN and Leakage Current correction. Output to the calibration database is a set of dark signal spectra for different integration times.

Apply Dark Signal (OP, E)

Subtract the correct dark signal spectrum from the measured spectrum.

Correction for FPA noise (OP, E)

Applies a correction factor for interference from the Peltier coolers on the Focal Plane Assembly.

Calculate PPG (OP)

Calculates from the LED calibration data the PPG (detector pixel-to-pixel gain), as the ratio of the measured LED spectrum and the smoothed spectrum (smoothing using a triangular convolution kernel of 5 pixels basewidth).

Apply PPG (OP, E)

Applies the calibration constants for PPG to the measurement spectrum.

Calculate Spectral Calibration Parameters (OP)

All algorithms listed above are applied to detector signals without need of knowledge of the precise wavelength of each pixel. This changes for the algorithms which follow, which need wavelength information in order to use the correct calibration constants. The algorithms described here provide this wavelength calibration, using information from the internal spectral lamp and from the Fraunhofer line structure in the solar calibration spectra.

Apply Spectral Calibration Parameters (OP, E)

Calculates for each detector pixel its wavelength [nm] from the spectral calibration parameters.

Determine PMD out-of-band Straylight (OP)

From solar calibration measurements, the measured PMD signal is compared to the expected signal calculated from the channel array intensity, and the ratio of the two is stored as so-called “Q-factor” in the calibration database.

Apply Straylight Correction (OP, E)

Uses pre-flight straylight characteristics (uniform straylight fraction and ghost intensities/widths) to calculate the straylight spectrum and subtracts it from the measurements.

Apply BSDF (OP, E)

Uses measurements of the Sun over the diffuser to calculate a (daily) Sun Mean Reference spectrum, where the irradiance is calibrated via the BSDF function of the diffuser (OP). The application of BSDF is also performed in the radiometric calibration of science measurements of the Sun (E).

Apply Radiance Response (E)

Perform the absolute radiometric calibration of the detector signals, including the calculation of the radiometric accuracy. Optionally a Sun-normalised spectrum (the reflectivity) is calculated.

Determine Fractional Polarisation Values (OP)

Calculates the Fractional Polarisation Values at 7 wavelengths over the GOME range from the ratio of PMD to channel signals, from the ratio of 2 overlapping channel signals, or from single-scatter theory (at 300 nm).

Apply Polarisation Correction (E)

The 7 Fractional Polarisation Values are interpolated to wavelength (OP, E). This is partly done using modified spline interpolation (Akima), partly using a parameterisation of the polarisation curve in the UV. From the interpolated polarisation values, a polarisation correction factor is derived for and applied to each channel array detector pixel of the Earth-shine measurements (E).

Quality Flagging (OP)

Several data quality flags are written to the Level 1b product, e.g. for signal detection limit, saturated pixels, sun-glint conditions.

Calculation of errors (OP, E)

Calculates the accuracy errors on Keydata functions and on fractional polarisation, and the accuracy and precision errors on the Sun Mean Reference spectrum (OP). Calculates the precision of the measured spectrum, and its accuracy, using errors on keydata and fractional polarisation from the Level 1 product (E).

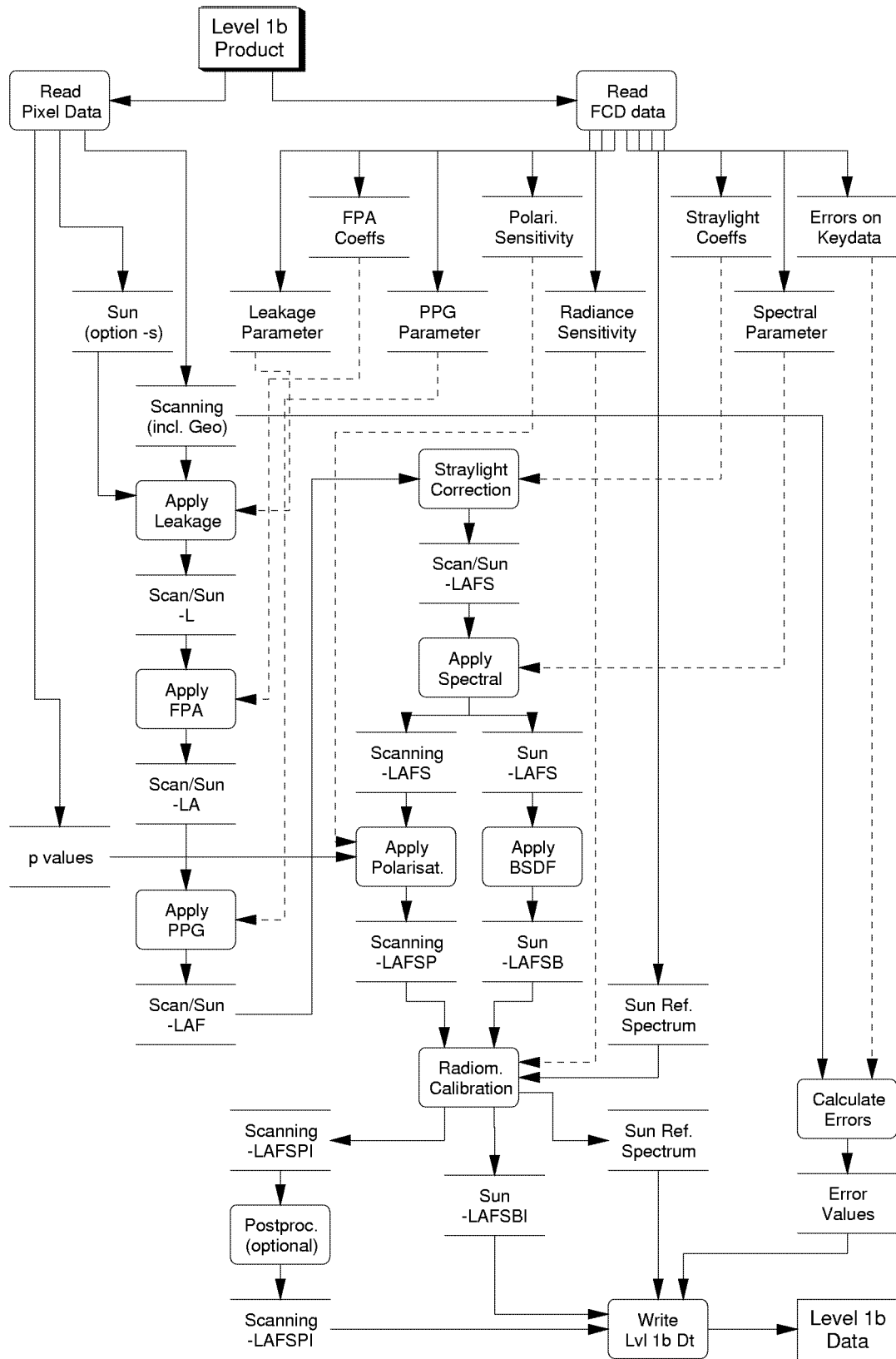


Figure 1: Data flow diagram of the Extraction software. The various calibration steps are indicated by the tags -LAFS etc. which correspond to the filter used in the -c option (see Section 3.3.5). Dotted lines indicate input parameters which remain valid for (parts of) a whole orbit.

3 Instructions for use

3.1 Installation

The extraction software comes on the product FTP-site as a set of C routines in the directory

```
/programs/level_1
```

The extraction programme can be compiled from this directory using the makefile. The software needs the gcc GNU ANSI C compiler, and the 'm' and 'fftw' libraries installed.

For the Linux operating system, type a the command line

```
./userconf
```

to automatically search the 'fftw' path and execute the makefile.

Alternatively, do it yourself by hand: edit the file `makefile-old` and type at the command line:

```
make -f makefile-old
```

For full information, read the ascii file `INSTALL` in the `/programs/level_1` directory of the FTP-site.

The resulting executables is named `gdp01_ex` or `gdp01_ex-linux`; in the remainder of this manual we will use `gdp01_ex` as the [default] name of the extraction program for Level 1 data.

The SUN Solaris operating system is currently no longer supported in Version 4.00

If you have already a version of `gdp01_ex` installed, and want to check if this is the latest version available, then check the file with release history `/programs/docs/release_101.txt` or run the program using the `-i` option (see Section 3.3).

If you are using an older version of the extractor, or if you are using a new version with older Level 1 data, you may get the following warning message on screen when running the software:

```
*****  
** WARNING: The software version used to generate the **  
**           Level 1 product (1.00 ) is different to the **  
**           version of the extraction programme (1.40 ) **  
*****
```

This warning is only important, if the format of the Level 1 product has changed. If there was no format change between the two versions, this warning can be ignored. See the release notes for format changes: between version 1.00 and 3.02 no format change took place. A format change did take place for version 4.00

IMPORTANT: software (and degradation file) for Version 4.00 are not downwards compatible. Data products for versions 3.x and lower cannot be processed with version 4.00 software and vice versa.

3.2 Standard Level 1 Extraction

3.2.1 Earth-shine Radiance

The default command for obtaining extracted Level 1 data in the form of calibrated Earth-shine radiance spectra is

```
gdp01_ex input_file output_file
```

where `input_file` is a Level 1 product file.

The ASCII output with calibrated radiances will be written to file `output_file.e11` where the extension `.e11` denotes Earth-shine Level 1 data. Additionally, a file `gdp01_ex.err` is generated, which describes the errors, if any, which occurred during program execution (this file is appended, not newly created, after each run of the program).

The input Level 1 product files are stored on the ftp server `ftp-ops.de.envisat.esa.int`; see file `readme_1st.txt` for further navigation on this site.

They have as default the extension `.lv1`

The output ASCII file of this default extraction contains header information (which calibrations were applied, the physical units of the data, orbit number, orbit propagation data), the calibrated Sun Reference Spectrum and, for each ground pixel of Earth-shine data, Sun-normalised PMD values and for each spectral Band the spectral radiances and their errors.

The detailed format description can be found in the Product Specification Document (PSD) which is contained on the FTP server as acrobat .pdf file: `\docs\PSD.pdf`

3.2.2 Sun, Moon Observations

Apart from the Earth-shine observations obtained during normal scanning mode, there are at regular intervals also observations made of the Sun and the Moon. These observations can be extracted from the data product using the `-s` or `-m` flags.

Solar observations are extracted using the command

```
gdp01_ex -s input_file output_file
```

where `input_file` is a Level 1 product file.

The ASCII output with calibrated irradiances will be written to file `output_file.sl1` where the extension `.sl1` denotes Sun-shine Level 1 data.

Lunar observations are extracted using the command

```
gdp01_ex -m input_file output_file
```

where `input_file` is a Level 1 product file.

The ASCII output with calibrated radiances will be written to file `output_file.ml1` where the extension `.ml1` denotes Moon-shine Level 1 data. Note that the calibrated radiance in this case is *not corrected* for the slit filling factor which depends on the Moon's phase and the position of the GOME slit over the Lunar surface.

Note that only a small fraction of all Level 1 product files contains Sun or Moon observations. To check whether or not a particular product file contains such observations, the contents of the file can be examined (output to screen) using the command (see Section 3.3.1)

```
gdp01_ex -i input_file
```

3.3 Special Options

A large number of possibilities exists to configure the execution/output of the Extractor. In the following we will separate the options into several classes:

1. options to obtain product information
2. options to steer the output
3. options to select a subset of data
4. options for scientific post-processing
5. options to perform/omit calibration steps

Options from the last 4 classes can be combined with each other.

Following the UNIX syntax, the extraction software can be called with flags `-?` to implement these options. The general syntax is given by

```
gdp01_ex flag1 [param1_1] [param1_2] flag2 [param2_1] [param2_2]
... flagn [paramn_1] [paramn_2] input_file output_file
```

where `input_file` is a Level 1 product file (default extension `.lv1`), and the output file gets an extension `.ell`, `.sl1`, or `.ml1` added depending on the type of observation (see Section 3.2).

In the following subsections we list the various options with program call using their flag, their parameters if any, and we provide a short description of the actions taken.

For more information on the calibration steps, the reader is referred to Section 4.

Important Note:

without the options for scientific post-processing, the Level 1 radiances and irradiances are based on the on-ground calibration, without correction for in-flight instrument degradation. Correction schemes for several instrument parameters have been developed. These are described in Section 4.10 on page 41. That Section ends with a recommendation for the user, which options to use. The recommended option requires the use of an external data file, as described in Section 3.3.4 on page 23.

3.3.1 Options to obtain product information

- *general product information*

```
gdp01_ex -i input_file
```

This provides screen output of data from the Specific Product Header (see [G4]) such as

- GDP Software Version (Operational processor, not Extractor)
- Pre-flight Calibration Key Data Version (see also Section 4.1)
- Time Correlation Information (e.g. orbit number, UTC)

plus a summary of measurements on the file such as

- Time coverage of measurements
- Number of Earthshine Measurement Pixels
- Number of Sun Measurements
- Number of Moon Measurements

the latter two are usually 0 (i.e. no such measurements performed in this orbit)

- *geolocation information*

```
gdp01_ex -g input_file
```

This provides screen output of the geolocation. For each ground pixel in the input file, it writes the 'Subset Counter' from the 'Earthshine Ground Pixel' structure (see [G4] , this counter is 0,1,2,3 for East,Nadir,West,Backscan pixels) and the '4 corner and centre coordinates' (latitude and longitude) from the 'Geolocation Record 1' structure (see [G4]).

- *selected product information*

```
gdp12_ex -q input_file output_file
```

This prints selected data from the product into a file `output_file.qa1` . This data is used by DLR-DFD internally for quality assurance purposes, and is not further discussed here.

- *write additional polarisation data and calibration data*

```
gdp01_ex -w input_file output_file
```

In addition to the regular level 1 data in the file `output_file.el1` [`.sl1`, `.ml1`] this creates two files `output_file.pcd` and `output_file.fcd`

The `.pcd` file contains information from the 'Pixel-specific Calibration Data' structure (see [G4]), in particular it provides for each ground pixel the following (in order of appearance):

- pointer to the spectral parameters and leakage parameters on the `.fcd` file to be used for spectral calibration and dark signal correction of this ground pixel.
- 7 polarisation fractions for PMDs 1,2,3, overlaps 1/2, 2/3, 3/4, p7 (=single scatter value @300nm at centre of ground pixel) for the integration time of bands 1b-4 plus a value of p7 for the ground pixel centre over the last 1.5 second; given as array with effective wavelength, p value, error on p value. In addition the value of the single scatter polarisation angle χ (see Section 4.9) in radian units is given.

Note that the numbering of ground pixels on the `.pcd` file starts at pixel 0, whereas the numbering in the `.el1` file starts at pixel 1; the pixel number on the `.pcd` is thus always 1 less than the number of the same ground pixel on the `.el1` file.

The `.fcd` file is the ASCII output of the 'Fixed Calibration Data' structure (see [G4]) which contains amongst others the following:

- band configuration i.e. start and end pixel of the 6 science bands and the 4 'straylight' bands
- PPG parameters (see Section 4.4)
- dark signal parameters and spectral calibration parameters (both are indexed as function of temperature; the relation of index to temperature is not visible in the Level 1 product, but the index to be used for each measurement is visible in the `.pcd` file)
- Sun Reference spectrum units of BU.sr/s and corresponding PMD values
- radiance response function and polarisation sensitivity η on the wavelength grid of the SMR (indexed as function of channel and as function of scan angle; the relation of index to scan angle is not directly visible in the Level 1 product, but for the Earthshine measurements they can be recovered by comparing the viewing angle of the ground pixel centre to the index in the 'Spectral Band Record' structure (see [G4]); however this structure is not written to any ASCII output by the extractor)

For more detailed information see the Product Specification Document [G4].

3.3.2 Options to steer the output

- *write a separate file for each ground pixel*

```
gdp01_ex -d input_file output_file
```

This splits (divides) the output for each ground pixel in a separate file

`output_file_nnnn.e11`

where `nnnn` is the number of the ground pixel (e.g. 0059 for ground pixel 59 in the level 1 product). Each file has the formatting of the standard ASCII output, in particular each file has its own Solar Reference Spectrum before the start of Earthshine data. Usually this `-d` option is used in connection with the `-p` option (Section 3.3.3) to limit the amount of output files.

- *write a separate file for each ground pixel without Solar Reference Spectrum*

```
gdp01_ex -n input_file output_file
```

This option is similar to the `-d` option, i.e. splits the output for each ground pixel in a separate file `output_file_nnnn.e11` (where `nnnn` is the number of the ground pixel), but the Solar Reference Spectrum is omitted on each file. Instead, the Solar Reference Spectrum is written on a separate file `output_file.sun`

- *write the output in HDF format*

```
gdp01_ex -h input_file output_file
```

This option is to be implemented in a future version of the software.

3.3.3 Options to select a subset of data

- *extract only selected spectral bands*

```
gdp01_ex -b b_filter input_file output_file
```

This provides an option to extract any combination of spectral bands. In addition to the regular 6 bands (1a, 1b, 2a, 2b, 3, 4) also the ‘blind’ band (the first 49 pixels of channel 1) and the ‘straylight’ bands (50 pixels directly before band 1a and 2a, and directly after band 1b) can be extracted. Selection is via a character string `b_filter` which consists of 10 flags which are either ‘y’ to enable selection or ‘n’ to disable selection.

The sequence is for bands 1a, 1b, 2a, 2b, 3, 4, blind 1a, stray 1a, stray 1b, stray 2a respectively. For example: the default value in the extractor (science bands only) is `b_filter = yyyyyynnnn`; extracting channels 1 and 2 completely has `b_filter = yyyynnyyyy`.

If you wish to extract PMD signals only, set `b_filter = ""`.

- *extract only ground pixels selected via pixel number*

```
gdp01_ex -p p_first p_last input_file output_file
```

This selects only the ground pixels from (and including) pixel number `p_first` to (and including) pixel number `p_last`. If only 1 pixel is to be extracted, set `p_first` equal to `p_last`.

- *extract only ground pixels selected via coordinates*

```
gdp01_ex -r lat_ul lon_ul lat_lr lon_lr input_file output_file
```

This extracts all pixels whose centres lie within a rectangle with upper left corner coordinates (`lat_ul`, `lon_ul`) and lower right corner coordinates (`lat_lr`, `lon_lr`). The coordinates are given as (latitude, longitude) in degrees. The range for latitude is from -90 to $+90$ degrees, the range for longitude is from 0 to 360 degrees.

Example: to extract all pixels over the north pole down to 70 degrees latitude use the command ‘`gdp01_ex -r 90. 0. 70. 360. input.lv1 output`’.

- *extract only ground pixels selected via time*

```
gdp01_ex -t t_first t_last input_file output_file
```

This is similar to the `-p` option, except that pixels are not selected according to pixel number, but according to measurement (readout) time. The time tags `t_first`, `t_last` are character strings formatted as `DD-MMM-YYYY_HH:MM:SS.m` where `DD` is day of the month, `MMM` are the first 3 characters of the name of the month, etc.

Example to extract 20 seconds of data near 11 o'clock on April 1st 1996:

```
'gdp01_ex -t 01-APR-1996_11:04:35.3 01-APR-1996_11:04:55.3 input.lv1  
output'
```

This option cannot be used in combination with the `-p` option.

- *extract only ground pixels selected via pixel type (East, centre etc.)*

```
gdp01_ex -x x_filter input_file output_file
```

This allows to extract only ground pixels at one position in the scan pattern: 'East', 'centre', 'West', 'backscan' (note that 'East' and 'West' only give the correct compass directions at the descending [sun-lit] part of the orbit; on the ascending part it is just the other way around).

Selection is via a character string `x_filter` which consists of 4 flags which are either 'y' to enable selection or 'n' to disable selection (like in the `-b` option). The flags are in sequence of 'East', 'centre', 'West', 'backscan', corresponding to the 'pixel types' 0,1,2,3 on the Level 1 product.

For example: the default value in the extractor (all pixel types) is `x_filter = yyyy`; extracting all but the backscan pixels is via `x_filter = yyyn`.

3.3.4 Options for scientific post-processing

- *extract 'albedo's instead of radiances*

```
gdp01_ex -a input_file output_file
```

The Earthshine radiances are divided by the Solar Reference Spectrum, after regridding of the Solar spectrum to the wavelengths of the Earthshine spectra (Akima interpolation in wavelength). Currently, no correction is made for Doppler shift of the solar observation (which is below 1/10th of a detector pixel, but nevertheless neglecting this can introduce high-frequency 'noise' on the few percent level). Therefore, this option shall only be used in applications where no high spectral resolution is required.

- *smooth out radiance jumps*

```
gdp01_ex -j input_file output_file
```

The detector arrays of GOME were designed for serial readout, such that the last pixel of the array is read out 0.09375 seconds later than the first. When GOME is scanning over an inhomogeneous ground scene (e.g. broken clouds) the variation of upwelling radiance with time is reflected in a variation of intensity depending on read-out time; the ground-scene inhomogeneity is aliased in the spectrum (this effect is denoted as 'spatial aliasing'). Such aliasing is often visible as a jump in radiance between two detectors (e.g. the last pixels of channel 3 record the same wavelengths as the first pixels in channel 4, but at an integration time which is shifted by ~0.09 seconds - although they should record the same intensity over a homogeneous scene there may be a radiance 'jump' if intensity varies with time). Using information from the PMDs, which are read out every 0.09375 seconds synchronised with detector pixel 1, a correction can be applied to re-normalise all spectral intensities to the intensity measured at the inte-

gration time of pixel 1 of the arrays [R8] - this is also the time for which the geolocation is defined (note: pixel number 1024 is read 93.75 ms *before* pixel 1).

Note that this option adjusts only the absolute radiance levels; it cannot correct for the spectral changes in absorption line depth or Ring effect with changing ground scene. Also, it can correct only a linear trend. The scientific usefulness of this option is therefore a matter of debate.

- *correct degradation in radiance response*

```
gdp01_ex -e deg_par_file input_file output_file
```

This option is implemented from version 2.00 of the software. A description of this correction, together with the most recent file with degradation parameters `deg_par_file` will be put on the DLR/DFD WWW server under <http://wdc.dlr.de/sensors/gome> (follow the link in the “GOME sensor navigation” panel to “Degradation Correction” and “Degradation files”). It is intended to update the file every 3 months. Note that the latest *file* version 4.00 uses a lookup table for the time dependence, which cannot be handled with versions of the extraction software before 4.00.

- *correct BSDF asymmetry*

```
gdp01_ex -f deg_par_file ch_filter input_file output_file
```

This option has been implemented from version 2.00 of the software. The parameters for correction are on the file with degradation parameters `deg_par_file` (see above under ‘correct degradation in radiance response’). Since version 2.30 of the software, the correction method has been changed, and a different parametrisation is used. Versions of `deg_par_file` lower than 2.0 are not compatible with the new method, but the newer file still contains the old parameters so that older versions of the software still run.

The correction may be applied for each channel separately, via a character string `ch_filter` which consists of 4 flags which are either ‘y’ to enable selection or ‘n’ to disable selection, for channel 1,2,3,4 respectively (for examples of a similar format, see Section 3.3.3).

The `-f` option corrects for a seasonal variation in the Sun spectra due to an asymmetry in the BSDF of the diffuser, using a correction which is smooth in wavelength. This is the default correction to be applied. As experimental option, which is currently not recommended for channels 3, 4, one can instead use the same syntax with `-u` instead of `-f` (since software version 2.30). This will apply a correction which contains spectral features on the BSDF for channels 1, 3, and 4.

- *correct degradation in reflectivity*

```
gdp01_ex -E deg_par_file ch_filter input_file output_file  
gdp01_ex -F deg_par_file ch_filter input_file output_file
```

This option is implemented from version 2.40 of the software. The parameters for correction are on the file with degradation parameters `deg_par_file` (see above under ‘correct degradation in radiance response’), from *file version 3.00* onwards.

The correction may be applied for each channel separately, via a character string `ch_filter` which consists of 4 flags which are either ‘y’ to enable selection or ‘n’ to disable selection, for channel 1,2,3,4 respectively. Currently, reflectivity correction data are only available for channels 1 and 2; the last two flags in `ch_filter` therefore act as dummy values.

The -E option (not yet implemented for version 4.00) provides a degradation correction of the reflectivity (the sun-normalised radiance) for the integrated swath width (i.e. not for a specific scan mirror position). It thus describes the ratio of degradation of the nadir lightpath to the degradation in the solar light path. The correction is applied to Earth-shine radiances.

The -F option provides a degradation correction and recalibration of the reflectivity. It does the same as the -E option, but extends this with a recalibration of the reflectivity at begin-of-life in orbit (implicitly, a recalibration of the BSDF).

- *improve polarisation correction*

```
gdp01_ex input_file output_file
```

(no processing flag available, needs setting flags in source code)

An improved method has been implemented for polarisation correction (see [G5] for algorithm description). This is implemented as hardcoded option, using a number of flags which must be set in the source code; subsequently the code needs to be recompiled. This concerns the following source files and variables:

```
edr.c:          const int do_use_knmi = 1;  
edr.c:          const int do_use_mean_p7_knmi = 1;  
edr.c:          const int do_use_mean_all_p = 1;  
knmionc.c:      static int do_improve_knmi = 1
```

The default is to have the new method activated. By setting `do_use_knmi = 0` (this disables all other flags) the old correction method can be restored.

3.3.5 Options to perform/omit calibration steps

- *omit cross-correlation of solar spectrum*

```
gdp01_ex -k input_file output_file
```

This option is implemented from version 2.20 of the software. As default, the spectral calibration of the SMR is from version 2.20 onwards corrected in the extraction software by cross-correlation to a theoretical solar spectrum (see [G3] for detailed description). This time-consuming step can be switched off using the -k switch, if a high spectral accuracy is not needed.

- *apply only selected calibration steps*

These options shall not be used by the normal user of GOME level 1 data.

Apply the options in this section only if you are an advanced user who wants to study special effects (e.g. check of dark signal and straylight subtraction in the 'straylight bands), or if you have a good reason to omit certain calibrations such as polarisation correction or radiance response calibration.

The generic command for applying calibration is

```
gdp01_ex -c c_filter input_file output_file
```

where `c_filter` is a character string with for each calibration step a single key character: L=Leakage, A=FPA, F=Fixed, S=Straylight, N=Normalize, B=BSDF, P=Polarization, I=Intensity, U=Unit_Conversion (details below).

The order of these calibrations shall not be changed.

The default extraction has `c_filter = LAFSNPIU` for Earthshine data, `c_filter = LAFSNBIU` for Sunshine data, and `c_filter = LAFSNIU` for Moonshine data.

For the 4 ‘blind’ and ‘straylight’ bands, only the calibrations `LAFSN` can be successfully applied. The other calibrations yield zero signals because the corresponding keydata are missing.

The Solar Reference spectrum on the Level 1 product has already the calibrations `LFSNB` applied (the `A` calibration is omitted because of the small integration time which makes the FPA component small). The extractor always adds the calibration `I`. This implies that even when Earthshine data are extracted with e.g. `c_filter = L`, the accompanying Solar Reference spectrum will still have `c_filter = LFSNBI`. Only the `U` calibration has effect on the Solar Reference. The PMD values of the Sun Reference are corrected for Leakage only.

If no calibration is to be applied (i.e. extract level 0 data), use `c_filter = ''`.

For the real hackers amongst you: note that the calibrations are always executed on the Level 1 product. For example, it is not possible to perform certain calibration steps using the extractor, then perform a calibration on your own on the ASCII file, and then run the extractor on the ASCII file to perform more calibration steps. Therefore, if you would wish to change calibrations (e.g. to subtract a different dark signal background), you would have to overwrite the corresponding fields in the ‘Fixed Calibration Data’ structure (see [G4]) on the Level 1 product. For a certain ground pixel, the pointers to the fields actually used (there may be more fields depending on temperature etc.) can be found from examining the `.pcd` file. See option `-w` in Section 3.3.1.

An overview of calibration steps follows below; the calibration steps are performed in the sequence as given. For more information on the background of the calibration, the reader is referred to Section 4.

- Leakage
The measured level 0 spectra are corrected for the dark signal by subtraction of a ‘Dark Spectrum’ (which for each detector pixel is a combination of readout fixed-pattern noise and leakage current). See Section 4.2
- FPA
Correct channel 1 for cross-talk from the Peltier coolers in the Focal Plane Assembly (FPA). See Section 4.3
- Fixed
Correct signals for pixel-to-pixel (fixed pattern) variations in the instrument response. See Section 4.4
- Straylight
Correct signals for straylight (uniform and spectral ghosts components). See Section 4.6
- Normalize
Normalise the signals to 1 second detector integration time (convert from BU to BU/s) by dividing the signal in each band by the integration time of that band. PMD signals are not affected.
- BSDF
Divide signals from Sun measurements by the BSDF of the diffuser to convert the radiance measured by the spectrometer into irradiance (in this step the irradiance is not yet absolutely calibrated; that occurs in the ‘Intensity’ calibration below). See Section 4.7
- Polarization
Interpolate the polarisation fractions p (up to 7 points; from theory and from the measured polarisation points of PMDs and overlap regions if available) to the wavelength of each detec-

tor pixel. Multiply the signal of each pixel with the polarisation correction factor derived from this interpolated p -value and calibration key data for the instrument's polarisation sensitivity. See Section 4.9. This applies to Earthshine data only.

- Intensity

Perform the absolute radiance calibration. For earthshine and moonshine signals the conversion is from BU/s to Watt/(s.cm².sr.nm), for sunshine from BU.sr/s to Watt/(s.cm².nm). For earthshine, the PMDs are normalised to the PMD signal of the Solar Reference spectrum and divided by the polarisation fraction, to obtain an 'unpolarised' reflectivity. See Section 4.8

- Unit_Conversion

Convert units of Watt/... to photons/...

4 Background Information on Algorithms

4.1 Overview of Calibration Procedures

Calibration of the instrument is performed on 3 different levels:

1. Onground Calibration:
determines the instrument response to calibrated radiance and irradiance sources as function of wavelength and scan mirror angles; determines the straylight properties of the instrument; provides preliminary calibration of wavelength and dark signal.
2. Level 0 to 1b Processing of Calibration Constants:
Calibration constants which can be directly derived from measurements using on-board calibration sources are determined during the operational Level 0 to 1 processing. This comprises dark signal measurements on the night side of each orbit, and at regular intervals wavelength calibration using the SLS measurements and PPG calibration using the LED measurements.
3. Correction of degradation:
due to degradation (mostly damaging by UV light) in optical components or detectors, the calibration constants for radiance and irradiance will change in time. This degradation cannot be derived from on-board calibration sources and has to be modelled externally from the data processor, by scientific analysis of time sequences of solar, lunar or earth-shine observations.

4.1.1 Onground Calibration

The onground calibration has been performed by TPD/TNO. The output of the on-ground calibration relevant to the operational Level 0 to 1 processing, is a data set containing the so-called '*Calibration Key Data*'.

For various reasons the original Key Data set had to be adjusted from the on-ground situation to the in-flight situation; mostly due to air-vacuum wavelength shifts and outgassing of optical coatings. This has resulted in several updates of the Key Data set by TPD - their most recent work resulting in Version 8 of the Key Data.

At the moment of writing a contract has been given out to SRON and DLR-DFD to improve on this Key Data set, using the time sequence of science measurements now available, and to characterise the time-dependence of calibration constants in-flight.

4.1.2 Level 0 to 1 Processing of Calibration Constants

Dark signal from the channel array detectors and from the PMDs is measured at each dark side of the orbit. Dark signal has a fixed component, the so-called fixed-pattern noise (FPN), as well as a component due to charge leaking which increases linearly with detector exposure time. Therefore, a series of dark spectra is taken at each night side of the orbit. All integration time patterns (i.e. combinations of IT for the different detectors) which may occur in the science measurement are covered. The dark spectra are included in a Calibration Database as function of integration time pattern. For processing, the most recent applicable dark spectrum from the database is used.

Spectral calibration is performed at regular intervals (typically monthly) using the sharp emission lines of an internal Pt/Cr-Ne hollow cathode lamp (the SLS). For each channel, a 3rd order (in channels 1,2) or 4th order (in channels 3,4) polynomial is fitted to the spectral line positions to obtain wavelength as a function of pixel number.

Since the SLS shows signs of degradation (with possible failure), an option is being implemented to obtain a wavelength calibration from Solar observations, using the Fraunhofer lines in the Sun.

The wavelength calibration depends on the temperature of the optical bench. Therefore the polynomial calibration constants are stored in the Calibration Database as function of temperature, in 0.1 K intervals of temperature. For processing, the most recent applicable coefficients from the database are used. The typical temperature variation over one orbit is ~ 1 K; the instrument starts heating up as soon as it enters sunlight and it starts to cool down when entering the dark part of the orbit.

Calibration measurements from Light Emitting Diodes (LEDs), which are placed close to the detectors, are used for flat-fielding the spectra of each detector array. This comprises the calculation of pixel-to-pixel gain (PPG). The PPG calibration is also done only at regular (typically monthly) intervals.

Daily observations of the Sun over a diffuser plate provides a solar reference which is used in the calculation of the Earth-shine reflectivity spectra. The calibrated solar irradiance spectrum is output as measurement data on the product of the orbit containing the solar measurement; for subsequent orbits it is used as calibration data for reflectivity, until a new Sun is observed. This calibration data is referred to as the *Sun Reference spectrum* or Sun Mean Reference (SMR).

4.1.3 Correction for degradation

The degradation of the instrument can be monitored by combining measurements from several sources over a longer period in time. This is an off-line activity. The results have to be fed into the data processor as additional calibration constants.

At the time of writing this research is still an on-going activity. Preliminary results have been obtained for the Radiance Response function in combination with the BSDF [R10][R11]. Correction factors for these calibration constants can at present be applied in the Extraction Software only (see Section 4.10).

At present no attempts are being made to correct for the etalon effect - a low-frequency spatial (i.e. as function of pixel number) oscillation in detector response caused by a changing thickness of ice deposits on the detector (see e.g. [R4]). For level 1 to 2 processing using the DOAS spectral analysis method this effect is not significant, since it divides out of the ratio of earth-shine to solar spectra.

4.2 Apply Dark Signal

The measured spectra are corrected for the dark signal by subtraction of a 'Dark Spectrum' which for each detector pixel is a combination of readout fixed-pattern noise (FPN) and leakage current (LC - this component increases linearly with detector integration time). In the present calibration approach these two components are not separated (they used to be in the prototype version of the processor; the 'Dark Current & Noise Factor' on the .pcd file still refers to this - these data are obsolete).

The dark spectra (measured at each night side of the orbit) are stored in the calibration database as function of temperature. The Level 0 to 1b processing takes the most recent values from the database for the temperatures encountered in the orbit, and writes these in the FCD record on the Level 0 to 1b product. Each measurement on the product has an index which points to the applicable temperature. The temperatures themselves are not visible in the product - see also option -w in Section 3.3.1

For the PMDs, the PMD zero offset is subtracted. These offsets are written on the FCD record just above the channel detector data.

Directions for use

This calibration should always be applied in the Extractor.

Limitations

It is known that in orbit regions affected by cosmic particle bombardments (the South Atlantic Anomaly), the real background signal will be higher than the usual dark signal. This has the effect that within the SAA the dark signal is underestimated, whereas it is overestimated on orbits which directly follow an orbit where the SAA was measured at the night side. It is also known that, due to interference effects from the Peltier coolers, the real background signal may differ a little (plus or minus) from the calibrated one: this effect is addressed in the next section on FPA correction.

4.3 Correction for FPA noise

Time series of the dark signal show a “noise” on the dark signal level which seems to be correlated to the voltage controlling the Peltier coolers on the Focal Plane Assembly [R9].

The correction is calculated as the Peltier output multiplied by a scaling factor. This scaling factor is in fact dependent on the history of cooler switches, and thus should ideally be calculated anew for each orbit, using all measurements in that orbit. However, this conflicts with the GDP architectural requirement that each ground pixel shall be independently processable. Therefore the scaling factor from one ‘typical’ orbit is used - the variation with orbit is expected to be ~10%.

The value of the Peltier output is for each readout calculated as a weighted average of the last 61 Peltier voltage readings. This weighting is equivalent to a filtering of the signal. The filter coefficients and the scaling factor are present in the FCD record on the Level 1b product.

The magnitude of the effect scales with integration time. Since it was regarded negligible for the 1.5 second integration times, the correction is only applied to band 1a.

From software version 2.40 onwards, an additional correction in band 1a is applied, which subtracts the remaining signal offset, as judged from the signal in the “straylight 1a” band.

Directions for use

This calibration should always be applied in the Extractor.

Limitations

Before software version 2.40, the typical reduction in FPA noise was a factor of ~5 but dark signal errors up to ± 7 BU remained (for 12 seconds integration time; the typical uncertainty was ~3 BU).

4.4 Apply PPG

The PPG describes the differences in quantum efficiency between neighbouring detector pixels. It is in principle contained in the instrument response function, but it is artificially separated from the instrument response function during calibration for the following reason. If the wavelength calibration of the instrument changes due to whatever mechanism, the radiometric response function of the instrument seen by a single detector pixel changes with it (this depends on wavelength-dependent transmission of lenses etc.). We have to re-interpolate the radiometric response to the wavelength of the detector pixel to be calibrated, but if pixel-to-pixel variations in quantum efficiency are present, the quantum efficiency of one pixel would be transferred to that of another pixel if the radiance response function were not corrected for PPG.

The radiance response function in the GOME calibration Keydata is corrected for PPG, and so must be the detector signals before applying that function.

The PPG calibration data are stored in the form of (calibration) spectra in the calibration database. The PPG spectrum from the calibration database is updated in regular (baseline: monthly) intervals, following a LED calibration measurement. The Level 0 to 1b processing takes the most recent PPG values from the database and stores these in the FCD record on the Level 0 to 1b product.

The application of this calibration parameter consist of dividing each measured detector pixel by the corresponding pixel in the PPG calibration spectrum from the Level 1 product.

The error on PPG correction is neglected in the calculation of the precision error.

Directions for use

This calibration should always be applied in the Extractor.

Limitations

None.

4.5 Apply Spectral Calibration Parameters

The main objective of the spectral calibration is to assign a wavelength value to each individual GOME detector pixel.

In each channel, a polynomial has been determined which gives wavelength [nm] as function of pixel number. The calibration parameters for spectral calibration are the coefficients of this polynomial. The order of the polynomial is not larger than 4.

Calibration polynomial coefficients are derived for different optical bench temperatures, for intervals of 0.1 K.

The polynomial coefficients are stored in the calibration database. The data are updated in regular (baseline: monthly) intervals, following a spectral line lamp calibration measurement. The Level 0 to 1b processing takes the most recent values from the database for the temperatures encountered in the orbit, and stores these in the FCD record on the Level 0 to 1b product. Each measurement on the product has an index which points to the applicable temperature. The temperatures themselves are not visible in the product.

In software version 2.00 a fixed correction is added to the polynomial coefficients. This correction term (a constant for channels 1, 2 and a 4th order polynomial for channels 3,4) describes the wavelength shift (averaged over the first 4 years in-orbit) between the GOME solar spectrum (calibrated with the lamp and corrected for Doppler shift) and the high-resolution solar spectrum of Kurucz. This correction is applied in the operational processing to the spectral coefficients on the Level 1b product and does not influence the Extractor.

In software version 2.20 a similar correction is now calculated in the Extractor, for the solar spectrum. However, this correction is not based on an average shift, but is calculated on the measured spectrum using on-line cross-correlation with the Kurucz spectrum. This correction is applied as default, but can be switched-off using the `-k` option in the Extractor.

Doppler shifts

The solar spectra will be doppler shifted due to the motion of the spacecraft in the direction of the light source. These shifts vary from maximally 0.06 detector pixel in channels 1, 3 to maximally 0.1 detector pixel in channels 2, 4.

This does not in any way influence the wavelength calibration of the instrument as such; the wavelength of each pixel for calibration parameters is given in the instrument reference frame, not in the moving solar reference frame. Therefore, the wavelength calibration on the level 1b product is in the instrument rest frame only.

The user must be aware of this and if necessary account for solar doppler shift himself.

The velocity of the spacecraft is around 7.6 km/s, the exact value is provided on the Level 1 product. The observation angle to the Sun is around 21 degree from the forward position, depending on the time of the year. The exact solar azimuth angle w.r.t. spacecraft is provided with the Sun measurements (not the Sun Reference spectrum) on the Level 1 product (as far as it contains Sun measurements).

Directions for use

The calibration is always applied automatically. The time-consuming cross-correlation on the solar spectrum may be switched off using the `-k` switch, if a high spectral accuracy is not needed.

Limitations

Wavelength calibration errors are typically 0.05 of a detector pixel. At the short wavelength side of channel 3 the error may be larger, due to the scarcity of lamp lines there. Mind the solar doppler shift mentioned above.

4.6 Apply Straylight Correction

This comprises subtracting the calculated amount of straylight per pixel from the measurement.

The calibration keydata contain for each channel uniform straylight factors (straylight scales with total intensity in the channel) and spectral ghost characteristics. The latter consist of the symmetry/asymmetry pixel, the ghost intensity, and the ghost spectral width. These data are present in the FCD record on the Level 1b product as direct copy of the calibration keydata.

The straylight is calculated on a per channel basis. In the bands where at a certain readout not the whole channel is available, the straylight correction is only performed using the signals from the available datapoints: missing data are set to 0 (no attempt is made to estimate the intensity in the missing part of the channel). This can currently only happen for band 1b when band 1a is still integrating. It is not considered a problem since the total intensity in band 1a is small compared to that in band 1b.

The error on the signal due to errors in straylight subtraction is mainly a precision error. This error is neglected in the precision error on the Level 1b data (see Section 4.11).

The so-called 'PMD straylight' (the factor Q in Eq.45 in [G3]) is not corrected, neither for earthshine PMDs nor for the PMDs of the Sun Reference spectrum. This is a multiplicative term which falls out of the equation for the earthshine PMD reflectivities - the only quantity used in level 1 to 2 processing. PMD straylight has been taken into account for the calculation of polarisation fraction in the operational Level 0 to 1 processing, but is nowhere explicitly visible on the Level 1 product.

Directions for use

It is recommended to apply this calibration in the Extractor.

Limitations

The Calibration Keydata for straylight are probably not more accurate than ~10%; this uncertainty is not well characterised.

4.7 Apply BSDF

GOME takes at regular intervals (typically once per day) solar calibration spectra, in the sunrise part of the orbit. An on-board diffuser can be switched into the lightpath during sun calibration, to scatter the collimated solar light (irradiance) into a diffuse (radiance) beam. Obviously, the solar spectrum thus recorded must be corrected for the characteristics of this diffuser. That correction is made by dividing the detector signals of the measured solar spectrum by the BSDF function of the diffuser (more precisely, what we calculate as 'BSDF' is actually the reflectivity of the calibration unit, which corresponds to one viewing direction out of the BSDF's 2-dim 'reflectivity space').

The BSDF is characterised by 11 coefficients $c_0 \dots c_{10}$ which are present in the FCD structure of the Level 1 product. It is calculated from these coefficients as a 7th degree polynomial in wavelength with correction terms for the Azimuth and Elevation angles (Az , Ele) of the Sun beam onto the diffuser:

$$BSDF = c_0 \cdot (1 + c_1 \cdot Az^2) \cdot (1 + c_2 \cdot Ele) \cdot \sum_{k=0}^7 c_{(k+3)} \cdot \left(\frac{\lambda}{500}\right)^k$$

where the angles are given in degree and the wavelength λ in nm. The angles are for each solar measurement given in the Sun/Moon Specific Calibration Data structure on the Level 1 product (see [G4]).

The PMDs are corrected for BSDF by dividing the PMD signals by the BSDF evaluated at the effective PMD wavelength (specified on the product together with the signals).

Sun Reference spectrum

The Sun Reference spectrum, which is included in the FCD structure of the Level 1 product, is calculated as the average of all spectra in a solar calibration measurement sequence which are fully inside the field-of-view of the instrument's irradiance port (+/- 1.5 degree in elevation), corrected for the instrument's irradiance response - a combination of the radiance response function and BSDF (the various spectra of this sequence differ from each other because they are measured with slightly different elevation and azimuth angles) - see also Section 3.3.5 . The Sun Reference spectrum on the Level 1 product is always obtained from the measurements on a previous orbit, not from the solar measurements on the product itself.

Directions for use

This calibration shall be used in the Extractor whenever a conversion from radiance to irradiance is required.

Limitations

The calibration can only be performed on Sun measurements, i.e. in combination with the -s option in the Extractor. It is already applied to the Sun Reference spectrum on the Level 1 product; this cannot be undone.

The BSDF calibration does not take into account the azimuth asymmetry of the BSDF which was found after analysing 4 years of data. The correction for azimuth asymmetry is possible from software version 2.00 in the Extractor, using option -f (see Sections 3.3.4, 4.10).

4.8 Apply Radiance Response

The application of the radiance response is simply a division of the observational signals (after dark current, PPG, and straylight correction) by the radiance response function. This function is provided in the FCD structure of the Level 1 product; per detector pixel one value is specified for each scan mirror angle and for each channel - characterised by the same index as for the polarisation sensitivity η , see Section 3.3.1 under option -w.

Before the division by the radiance response function is made, it is interpolated from the wavelength grid of the SMR to the wavelength grid of the Earth-shine spectrum.

The radiance response function on the FCD file is in fact composed of 3 calibration Keydata functions: the radiance response for nadir ('RadResp'), the scan mirror dependence w.r.t. nadir ('SM_DEP') and a function ('f2') which was meant to describe the temperature dependence in the overlap region (for the latter now always the function for 6,5° C is used).

Optionally (see Section 3.3.4 under option -a) the Sun-normalised radiance or Reflectivity can be calculated from the calibrated radiance (S_{cal}) as:

$$R_{\lambda} = S_{cal_{\lambda}} / SMR_{\lambda}$$

Before the division by the Sun Reference spectrum (SMR) is made, the SMR is interpolated to the wavelength grid of the Earth-shine spectrum.

Directions for use

This calibration should always be applied in the Extractor if absolutely calibrated radiances are required. If a relative calibration is sufficient, this calibration is not required. However, note that in wavelength regions where the radiance response function has sharp features, not correcting for radiance response implies that the uncalibrated spectrum has sharp features as well (which may disturb e.g. a DOAS fit).

Limitations

It is known that especially in channel 3 the on-ground calibration determination is not very accurate due to outgassing problems with a dichroic. This problem is still present for Keydata version 8; work for improvement is in progress.

Errors due to the etalon effect [R4] are not corrected. This should not be a problem for sun-normalised spectra, but an etalon structure with amplitudes of up to a few percent may be visible in radiance (Earth, Moon) or irradiance (Sun) spectra.

In Keydata version 8, noise can be seen on the calibration parameter for radiance response. This noise will be aliased into the calibrated radiance, and could adversely influence the pixel-to-pixel precision of the measurements.

4.9 Apply polarisation correction

GOME is a polarisation sensitive instrument. The radiance response function described in the previous section calibrates the instrument assuming unpolarised input light. Therefore, a correction factor must be applied which describes the ratio
 (instrument throughput for the actual input polarisation) / (throughput for unpolarised light).

This correction needs the polarisation sensitivity of the instrument and a characterisation of the atmospheric polarisation.

The polarisation sensitivity of the instrument (η , called Eta_Omega on the .fcd file) is provided in the FCD structure of the Level 1 product; per detector pixel one value is specified for each scan mirror angle - characterised by the same index as for the Radiance Response, see Section 3.3.1 under option -w.

The atmospheric polarisation has been retrieved during the operational Level 0 to 1 processing. The Level 1 product contains for each ground pixel in the 'Pixel-specific Calibration Data' structure (PCD, see Section 3.3.1 or [G4]) a small array of fractional polarisation values at certain well-spaced wavelengths across the GOME spectral range. Up to 7 points can be specified.

Three points come from the comparison of channel array signals with broad-band PMD signals (in Figure 2 these are the filled circles at points P with index 1, 2, 3; the corresponding wavelengths $\lambda_1, \lambda_2, \lambda_3$ are approximately 360 nm, 500 nm and 700 nm depending on the exact spectral shape of the input spectrum). Three more points come from the channel overlap regions (in Figure 2 these are the open circles at points P with index 4, 5, 6 for overlaps between channels 1/2, 2/3, 3/4; the corresponding wavelengths $\lambda_4, \lambda_5, \lambda_6$ are at 312.5, 400, 600 nm approximately) though these appear to be largely unuseable for various reasons (in which case they are set to a number >99 at wavelength -1 in the PCD). The last ("theoretical") point (labelled $[\lambda_7, P_7]$ in the figure) comes from the Rayleigh single-scatter model simulation of polarisation in the Ultra Violet.

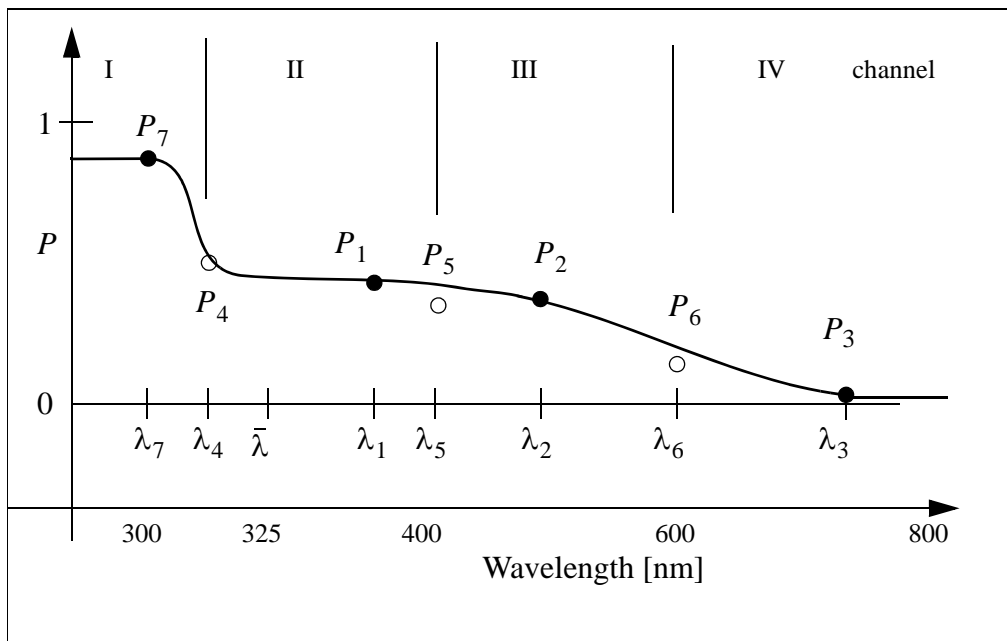


Figure 2: Wavelength interpolation of polarisation values

The fractional polarisation values, p , give the fraction of light polarised along the direction of the instrument slit; this is the quantity relevant to GOME calibration. The relation between p and more widely used atmospheric parameters such as the Degree of Polarisation, P , and the polarisation angle, χ (defined w.r.t the plane through Nadir, instrument, and viewing direction), is given by:

$$p = 0,5 \cdot (1 - P \cdot \cos 2\chi)$$

Before these polarisation values can be used for polarisation correction of the measured intensity, they must be interpolated to the wavelengths of all detector pixels. The interpolation scheme is based on simulations of the Degree of Polarisation, P , as function of wavelength. But since the algorithm assumes a constant value for the polarisation angle χ as function of wavelength, the same interpolation may be made on p as well.

Radiative transfer model calculations, including polarisation, have been performed by P. Stammes (KNMI) to study the polarisation behaviour in the UV for application to the GOME instrument [R5], [R7]. These simulations show that up to wavelength λ_7 (300 nm), the degree of polarisation $P(\lambda)$ is virtually a constant, so there we set fractional polarisation equal to the theoretical single-scatter value at λ_7 . $P(\lambda)$ then changes rapidly between λ_7 and a value $\bar{\lambda}$ (≈ 325 nm), then shows smooth behaviour into the visible (ca. 325-400 nm). Thereafter, $P(\lambda)$ is a smooth slowly-varying function of wavelength.

The interpolation of polarisation goes roughly as follows (for details see [G3]):

- constant shortward of wavelength λ_7 (≈ 300 nm, pre-defined on the initialisation file)
- a parametrisation (see below) between λ_7 and a pre-defined wavelength $\bar{\lambda}$ (≈ 325 nm)
- power law (continuity in value and in gradient) between $\bar{\lambda}$ and λ_1 (if P_4 present, else see below)
- Akima interpolation between λ_1 and λ_3 (this is basically a spline interpolation, but with constraints to reduce overshoot)
- constant longward of λ_3 .

The critical region is 300-325 nm. An analytic function is required that mirrors the shape of simulated polarisation for all atmospheric scenarios. This function must have a turning point at the theoretical point λ_7 , with parabolic fall-off behaviour near this point. The function must also show exponential tail behaviour as λ tends towards $\bar{\lambda}$. This role is fulfilled by the Generalised Distribution Function (GDF) constructed by R. Spurr for the GOME calibration [G3]:

$$P(\lambda) = \bar{P}(\bar{\lambda}) + \frac{w \cdot \exp(-[\lambda - \lambda_7] \cdot \beta)}{\{1 + \exp(-[\lambda - \lambda_7] \cdot \beta)\}^2}$$

where $\{\bar{P}, w, \beta\}$ are parameters that characterise the GDF; they must be found to fit the given interpolation points. If P_4 is missing, which usually is the case, then there are more parameters than equations. In this case the GDF is connected directly to λ_1 with continuity of the gradient derived from Akima interpolation. However, if that gradient turns out to be positive then the GDF cannot be connected directly and is connected instead with zero gradient to the point halfway between $\bar{\lambda}$ and λ_1 , and a parabolic connection (continuous in value and gradient) is made from the halfway point to λ_1 .

The actually simulated polarisation shows a bit more complex behaviour, e.g. some residual structure of the O₃ Huggins bands is visible in the polarisation (due to different airmasses in- and outside the absorption peaks with different depolarisation by aerosols), but the approximation above was found accurate to better than 3% compared to the simulated polarisation values.

Once the interpolated fractional polarisation values have been calculated, the polarisation correction factor is given by

$$c_i = \frac{1}{2} \cdot \frac{1 + \eta_i}{(1 - \eta_i) \cdot p_i + \eta_i}$$

where subscript i denotes detector pixel.

The errors on the polarisation correction factor are derived from the errors on the seven p values on the Level 1 product, and from the errors on the calibration keydata for η . Errors due to the interpolation of polarisation values is not taken into account.

The errors are added to the error on absolute radiometric response, not to the error on relative radiometric (pixel-to-pixel) response.

Directions for use

This calibration should always be applied in the Extractor if absolutely calibrated radiances are required. If a relative calibration is sufficient, this calibration is not required. However, note that in wavelength regions where η has sharp features, not correcting for polarisation may imply that the uncalibrated spectrum has sharp features as well (which may disturb e.g. a DOAS fit).

Limitations

It is known that especially in channel 3 the on-ground calibration determination of η was not very accurate due to outgassing problems with a dichroic, leading to problems with polarisation correction. This problem is still present for Keydata version 8; work for improvement is in progress.

Errors in the determination of p , or in the wavelength interpolation of p may lead to undercorrected spectral features in the spectrum.

In Keydata version 8, noise can be seen on the calibration parameter η . This noise will be aliased into the calibrated radiance, and could adversely influence the pixel-to-pixel precision of the measurements for high values of the atmospheric polarisation.

No overlap point (at λ_4 , λ_5 , λ_6) is currently being used in the wavelength interpolation, as their reliability was judged to be too low due to the ‘radiance jump’ problem (see Section 3.3.4 under option -j).

4.10 Apply Degradation Parameters or azimuth asymmetry of the BSDF

In software version 2.00 an option `-e` has been added to the Extractor to correct the Radiance Response function of the instrument for degradation of the optical components [R11]. The reason that this is done in the Extractor and not in the operational processing is twofold: no change in product format is needed (at the cost of having an additional file with Degradation Parameters), and users can reprocess (a selection of) their old data themselves which avoids operational reprocessing and the distribution of the whole archived dataset to all users.

For the same reasons (product format/ reprocessing) a separate option `-f` corrects the solar spectra for an azimuth asymmetry of the BSDF, which was found after analysing almost 4 years of data. This asymmetry is not really a degradation, but a seasonal effect which can be seen as a disturbance of the degradation curve [R10]. Since software version 2.30 an improved correction method is used which also corrects the ‘sidelobes’ found on the BSDF [R13]. Like the previous correction, this is a smooth function of wavelength. As discussed in [R13], there is also spectral structure visible on the BSDF which could be described for channels 1, 3 and 4. This has experimentally been implemented in the software (option `-u` instead of `-f`).

The correction for option `-e` has been derived from solar measurements, assuming that the degradation for the solar and for the nadir light path is the same. This is not quite the case; especially in the UV the transmission function of the scan mirror has a significant dependence on scan angle. This causes a degradation of the measured Earth’s (and Moon’s) reflectivity (the ratio of Radiance to Irradiance, also named Sun-normalised Radiance), which in principle is even different for the East and West direction in the swath. For instrument channels 1 and 2, a correction has been derived for the reflectivity integrated over the 960 km swath [R14]. Based on comparison to ground-measured Ozone profiles and desert reflectivity, also a recalibration of the absolute level of measured Earth’s reflectivity was performed. Since software version 2.40 a correction for degradation of reflectivity is implemented in the Extractor software. Option `-E` (not yet implemented) invokes the correction for reflectivity degradation only, whereas option `-F` also provides the re-calibration of absolute level of reflectivity. These options require the additional file with Degradation Parameters, version 2.40 or higher.

The degradation of optical components does not only affect the Radiance Response function, but also the calculation of the fractional polarisation values p (see Section 4.9). For PMDs 2 and 3 this degradation was always more or less equalised by a self-calibration on the Sun which was initially intended to correct straylight only. This self-calibration is from version 2.00 onwards also applied to PMD 1.

Directions for use

It is recommended to apply the `-e` calibration in the Extractor (see Section 3.3.4) if a Radiance Response calibration is also applied (Section 4.8). In addition to `-e`, the `-F` calibration may further improve the Radiance in channels 1 and 2, but note that this is not yet approved by ESA. For solar spectra: if also a BSDF correction is to be applied (Section 4.7) it is recommended to use both the `-e` and the `-f` option.

The use of the experimental `-u` option instead of `-f` is not recommended.

However, as the degradation parameters for the `-F` calibration were derived using the `-u` option, an exception may be made for channel 1 (and channel 2, where `-u` does not take effect) when using the `-F` option as well.

Applications where Sun-normalised Radiance is used: note that the `-e` option does not have an impact on the ratio of Radiance to Irradiance, but it doesn’t harm either to output the corrected

levels. It is recommended to use both the `-e` and the `-f` option, and with the usual scientific caveats also the `-F` option (active only for channels 1 and 2).

Limitations

The degradation is modelled with a polynomial function in wavelength. Shifts in Etalon are not corrected.

An additional file with Degradation Parameters is needed (see Section 3.3.4 under option `-e`).

Software versions from 4.00 need a degradation file version of 4.00 or higher. The use of the `-F` option requires a degradation file version of 3.00 or higher.

For versions *below* 4.00: the use of a single polynomial for the `-e` degradation correction, implies that for measurements early in the mission a degradation file which contains data up to the measurement date may provide a better correction than a degradation file which fits data over a longer time range. Unfortunately, the `-F` option cannot be used with degradation files before version 3.00, but note again that for Sun-normalised radiance (only), the `-e` degradation correction divides out.

For Level 1 products generated before version 2.00 no correction is possible on the fractional polarisation values p from PMD 1.

The PMD reflectances are not corrected. The influence of degradation is relatively small (and zero for unpolarised input) since a normalisation with Sun observations is made.

4.11 Calculation of Errors

A distinction is made between accuracy errors and precision errors:

- The accuracy of a measurement is a measure of how close its result is to the true value.
- The precision of a measurement is a measure of how well its result has been determined, without reference to its agreement with the true value. Precision is therefore a measure of the reproducibility of the result, irrespective of e.g. a systematic deviation.

In the GOME level 1 context, as precision errors are taken the random errors due to shot noise, electronic readout noise, and errors due to digitisation of the signal. As accuracy errors are taken the precision error augmented for each calibration step with errors on the related calibration Key-data.

The precision error is on the Level 1 product expressed in absolute [radiance] units; on the level 1 ASCII output this is the 3rd column with data (the first two columns are wavelength and radiance).

The accuracy error is on the Level 1 product expressed in relative units, as ratio of accuracy errors in absolute [radiance] units with the signal in absolute [radiance] units; on the level 1 ASCII output this is the 4th column with data.

5 Appendix: Version history

The most recent description of the version history can always be found on the distribution CD in the file:

```
| /programs/docs/release_101.txt
```

The majority of software changes reported in that file applies to the operational GDP processor, and not to the extraction software. Changes in extraction software are explicitly mentioned as such.

Changes in extraction software mentioned in the file are (up to the time of writing) are for clarity separately listed below:

```
/*-----*\  
**                                             **  
**          GDP Level 0 to 1 - Release Notes          **  
**                                             **  
** Author: Diego Loyola, DLR/DFD-AP                **  
/*-----*/  
/*-----*\  
** Release 4.00      Tue Jul 22 14:26:43 CEST 2008  
/*-----*/  
    o Format change: Writing also BOA (bottom of atmosphere) angles into level-1  
      product therefore level-1 product version increased to 2  
    o Format change: Calculating OCRA/Rocinn cloud parameters and writing into  
      level-1 product  
    o The extractor gdp01_ex is not downwards compatibel to versions before  
      this one  
    o We have a new degradation routine with Lookup Table instead of polynomial  
      fit in time.  
/*-----*\  
** Release 3.02      Thu Feb 01 15:00:00 MET 2007  
/*-----*/  
    o Fixed: byte swapping float values and back returned small difference  
      in some cases.  
    o Enabled use of high-order polynomials for degradation correction.  
/*-----*\  
** Release 3.00      Tue Nov 14 15:29:00 MET 2006  
/*-----*/  
    o Portability improved: byte swapping to and from big-endian revised.  
    o Functionality from versions 2.30 and 2.40 included; the improved  
      polarisation correction in the Extraction software is now default.  
    o Wrong extrapolation in the Extraction software degradation correction  
      for orbits before July 1995 corrected  
/*-----*\  
** Release 2.40      No public release - Test version for the CHEOPS project  
/*-----*/  
    o New functionality in the Extraction software:  
      A new correction algorithms has been implemented to recalibrate the  
      reflectivity in channels 1 and 2, taking into account differences in
```

degradation for the Nadir and the Sun light path, option '-F'.
The parameters needed are read from the degradation-file.

Band 1a signals have an improved correction algorithm for Peltier
cross-talk.

Experimental option to invoke an algorithm for improved polarisation
correction; recalculates p7 and improves GDF interpolation

```
/*-----*\
** Release 2.30    No public release - Test version for the CHEOPS project
\*-----*/

    o New functionality in the Extraction software:

        Two new BSDF correction algorithms have been implemented: with smoothed
        correction parameters using a polynomial in wavelength, option '-f', and
        with unsmoothed correction parameters, option '-u'.
        The parameters are read from the degradation-file.

/*-----*\
** Release 2.20    Mon Apr 8 15:51:34 MET DST 2002
\*-----*/

    o New functionality in the Extraction software:
        update spectral calibration of the Sun Mean Reference spectrum using
        cross-correlation with a template spectrum; option '-k' disables this
        feature.

    o Optimize the test to reject Sun calibrations with improper illumination.
        (ERS-2 EBM problem starting in 17th January 2001)

/*-----*\
** Release 2.10    Thu Mar 1 12:54:19 MET 2001
\*-----*/

    o Correct geolocation of ground pixels in static view mode
    o Close geolocation gaps. Interpolate centre coordinates of ground pixel
    o Include a test to reject Sun calibrations with improper illumination.
        (ERS-2 EBM problem starting in 17th January 2001)

/*-----*\
** Release 2.00Wed Jul 21 15:56:04 MET DST 1999
\*-----*/

    o New options in the Extraction software:
        - '-e' degradation correction
        - '-f' BSDF asymmetric azimuth dependency correction
    o Include scan mirror correction for albedo computation ('-a' option)
    o Reorganising of the Extraction software to improve performance

/*-----*\
** Release 1.50Fri Jan 23 14:15:44 MET 1998
\*-----*/

    o Put radiance jumps correction as extra option '-j'
```



```
/*-----*\
** Release 1.40 Mon Oct 13 10:22:20 MET DST 1997
\*-----*/
  o New options in the Extraction software:
    - '-r' extract ground pixels between corners upper left and lower right
    - '-n' creating one file without sun spectrum for each ground pixel
    - Extraction software runs also under Linux operating system
/*-----*\
** Release 1.35 Mon Nov 13 15:33:32 MET DST 1997
\*-----*/
  o
/*-----*\
** Release 1.30 Mon Jun 23 14:59:26 MET DST 1997
\*-----*/
  o Changes in the Extraction software:
    - Not apply FPA correction when less than 61 ground pixels are available
    - New calibration option "J", for radiance jump correction
    - Extraction software runs also under ALFA computers
/*-----*\
** Release 1.20 Tue Oct 15 16:47:00 MET DST 1996
\*-----*/
  o
/*-----*\
** Release 1.10 Fri Aug 23 11:52:03 MET DST 1996
\*-----*/
  o Changes in the Extraction software:
    - Saturation check done only when the co-adding mode is not active
    - New option '-a', compute albedos instead of radiances
/*-----*\
** Release 1.00 Thu Jul 18 13:49:06 MET DST 1996
\*-----*/
  ~~~~~
  FIRST OPERATIONAL VERSION
  ~~~~~
/*-----*\
** Release 0.90 Mon Jul 15 17:12:10 MET DST 1996
\*-----*/
  o New option '-x', extract specific ground pixels
```

```
/*-----*\
** Release 0.80Thu Jun 20 10:42:58 MET DST 1996
\*-----*/
    o Support new GOME co-adding mode
/*-----*\
** Release 0.7Fri Apr 11 10:11:49 MET 1996
\*-----*\
    o Level 1 Data product format changed
    o Generation of Sun and Moon products
    o FPA cross-talk correction
    o Polarization correction for pixel with IT > 1.5 seconds
    o Reflectivity jumps flagged
    o Changes on the KeyData error factors
/*-----*\
** Version 0.6Tue Nov 28 14:07:13 MET 1995
\*-----*\
    o
/*-----*\
** Version 0.5Wed Oct 25 13:35:26 MET 1995
\*-----*\
    o KeyData version 7.0
    o Uses only the 6.5 "f2" function
    o Polarization correction of band 1a using an averaged p7
    o Error values calculated using one average KeyData factor per channel
    o Adds the flag '-w' (write the calibration data) to the extracting
      program
/*-----*\
** Alfa ReleaseMon Jul 31 14:00:00 MET 1995
\*-----*\
    o KeyData version 5.0 & 6.0
    o Uses an interpolated "f2" function
    o Wrong polarization correction for band 1a
    o Error values calculated for signal to noise
```