

## CONTACT POINTS

### Workshop Co-Ordination

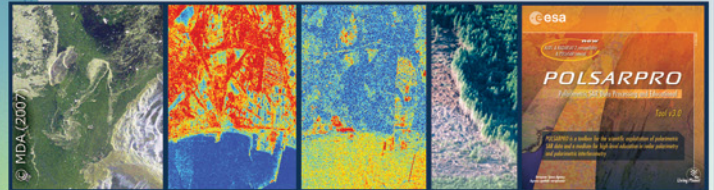
Earth Observation R & D Team  
e-mail: envmail@esa.int

### Hotels and Transportation

ESA Conference Bureau  
e-mail: esa.conference.bureau@esa.int  
Tel. : +39 06 9418 0912  
Fax.: +39 06 9418 0902

## ESA ORGANISING COMMITTEE

**M. Engdahl**  
**Y.-L. Desnos**  
**A. Minchella**  
**M. Davidson**  
**N. Miranda**  
**B. Rosich**



## SCIENTIFIC COMMITTEE

### Prof. Wolfgang-Martin Boerner

University of Illinois, USA

### Dr. Shane R Cloude

AEL Consultants, UK

### Dr. Wolfgang Dierking

Alfred Wegener Institute for Polar and Marine Research, Germany

### Prof. Chen Erxue

The Chinese Academy of Forestry, China

### Prof. Preben Gudmandsen

Technical University of Denmark, Denmark

### Dr. Anthony Freeman

Jet Propulsion Laboratory (JPL), USA

### Dr. Irena Hajnsek

German Aerospace Center (DLR), Germany

### Dr. Thuy Le Toan

Centre d'Etudes Spatiales de la Biosphere (CESBIO), France

### Prof. Pierfrancesco Lombardo

La Sapienza University of Rome, Italy

### Prof. Alberto Moreira

German Aerospace Center (DLR), Germany

### Dr. Konstantinos P. Papathanassiou

German Aerospace Center (DLR), Germany

### Prof. Eric Pottier

University of Rennes 1, France

### Prof. Motoyuki Sato

Tohoku University, Japan

### Prof. Christiana Schmullius

Friedrich Schiller University of Jena, Germany

### Dr. Masanobu Shimada

EORC/JAXA, Japan

### Prof. Henning Skriver

Technical University of Denmark, Denmark

### Dr. Jean-Claude Souyris

Centre National d'Etudes Spatiales (CNES), France

### Dr. Ridha Touzi

Canada Centre for Remote Sensing (CCRS), Canada

### Dr. Dan Weydahl

Norwegian Defence Research Establishment, Norway

### Prof. Wooil M. Moon

University of Manitoba, Canada

### Prof. Dr. Yoshio Yamaguchi

Niigata University, Japan

### Prof. Andrea Monti Guarnieri

POLIMI, Italy

### Prof. Shaun Quegan

University of Sheffield, UK

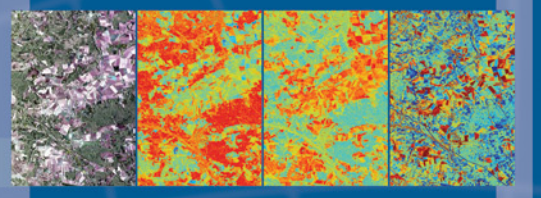


# POLinSAR 2009

The 4<sup>th</sup> International Workshop on Science and Applications of SAR Polarimetry and Polarimetric Interferometry

**ANNOUNCEMENT  
& CALL FOR PAPERS**

ESA-ESRIN Frascati, Rome, Italy • 26-30 January 2009



## BACKGROUND

The European Space Agency is organising POLInSAR 2009, the 4th International Workshop on Science and Applications of SAR Polarimetry and Polarimetric Interferometry, which will be hosted in ESRIN, Frascati, Italy on 26-30 January 2009

## PARTICIPATION

The Workshop is open to ESA Principal Investigators, scientists and students working in the field of SAR Polarimetry and Polarimetric Interferometry (Pol-InSAR), and to representatives from National, European and International space agencies.

## OBJECTIVES

The main objectives of the workshop are to:

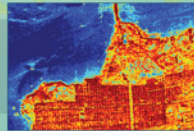
- Provide a forum for scientific exchange and to initiate and encourage close collaboration between individual research groups
- Exploitation of spaceborne missions
- Present new results from the latest studies in the field and to assess the state-of-the-art
- Present polarimetric and interferometric results from ALOS PALSAR, RADARSAT-2 and TerraSAR-X
- Assess the available Pol-InSAR tools and datasets
- Review the bio-geophysical parameters that can be retrieved and their accuracy
- Make recommendations for algorithm development and new products, future missions and applications
- Report on progress/status of recommendations of PolInSAR 2007

**web site:** <http://earth.esa.int/workshops/polinsar2009> • **e-mail:** [envmail@esa.int](mailto:envmail@esa.int)

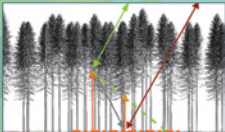
## THEMES

The workshop will focus on theory and methods in the fields of SAR Polarimetry and Polarimetric Interferometry around the following themes:

### 1 SAR Polarimetric Interferometry (Pol-InSAR)



### 2 Theoretical Modelling



### 3 Applications of SAR Polarimetry

*Land: Forest, Agriculture, Environment, Wetlands*

*Ocean: Pollution Monitoring, Ship detection, Ocean Parameters Retrieval, Sea Features*

*Cryosphere: Snow, Land Ice and Sea Ice Monitoring*

*Hazards: Fire Monitoring, Volcanoes, Flooding, Earthquake*

### 4 Polarimetry and Persistent Scatterer Interferometry (PSI)



### 5 ALOS PALSAR, TerraSAR-X, RADARSAT-2, COSMO-SkyMed results



### 6 Future Spaceborne missions for Pol-InSAR

### 7 Airborne Pol-InSAR campaigns



## THE 4<sup>TH</sup> INTERNATIONAL WORKSHOP ON SCIENCE AND APPLICATIONS OF SAR POLARIMETRY AND POLARIMETRIC INTERFEROMETRY

## ORGANISATION

The workshop is organised around:

- Papers and posters selected by the Scientific Committee
- Invited papers (ESA studies)
- Round table discussions seeded with questions prepared by the Scientific Committee and ESA
- Demonstration of software tools
- Workshop proceedings published by ESA

## REGISTRATION and ABSTRACT SUBMISSION

Further information and guidelines regarding the registration and abstract submission can be found on the workshop website at:

<http://earth.esa.int/workshops/polinsar2009>

## DEADLINES

- |  |                          |
|--|--------------------------|
| Submission of Abstracts                        | <b>30 September 2008</b> |
| Notification of Acceptance                     | <b>3 November 2008</b>   |
| Issue of Preliminary Programme on the web site | <b>3 November 2008</b>   |
| Registration                                   | <b>3 November 2008</b>   |
| Release of Final Programme                     | <b>at the workshop</b>   |
| Submission of Full Paper                       | <b>26 January 2009</b>   |

## FEES

The official language of the workshop is English. No participation fees will be charged. Participants are expected to finance their own travel and accommodation expenses.